



© 2010 ZIH Corp.



## Zebra® ZBR-PS300

### Ethernet-to-USB Device Server (P/N P1026763) Developers Setup Guide



Thank you for purchasing the *ZBR-PS300 Ethernet-to-USB Device Server*. This setup guide provides information on how to configure and use this device in a network environment.

The *ZXP Series 8 Printer* needs a properly configured application to print and smart card encode; for the SDK, see the Zebra website: <http://www.zebra.com>

#### Contents:

- Ethernet-to-USB Device Server
- Power Supply     Setup CD     Setup Guide

#### Supported Operating Systems:

- Windows 7 ( 32-bit Edition and 64-bit Edition )
- Windows Vista ( 32-bit Edition and 64-bit Edition )
- Windows XP ( 32-bit Edition )
- Server 2003
- Server 2008 ( 32-bit Edition and 64-bit Edition )

#### Notes:

- Intended to be used with *ZXP Series 8 Printers* with Smart Card Encoder only.
- Up to two printers may be connected to the *Ethernet-to-USB Device Server*.

#### North America and Latin America:

Zebra Technologies  
Card Printer Solutions  
1001 Flynn Road  
Camarillo, CA 93012-8706 USA  
Phone: 800-511-9909 (within the U.S.)  
Phone: +1 805 577-7002, option 1 (from Latin America)  
e-mail: techsupport@zebra.com



#### Europe, Middle East, and Africa:

Zebra Technologies  
Card Printer Solutions  
Dukes Meadow  
Millboard Road, Bourne End  
Buckinghamshire SL8 5XF, England  
Phone: + 44 (0) 1628 556 025 (from outside U.K.)  
Phone: 1628 556 025 (from inside U.K.)  
FAX: + 44 (0) 1628 556 001  
e-mail: cardts@zebra.com

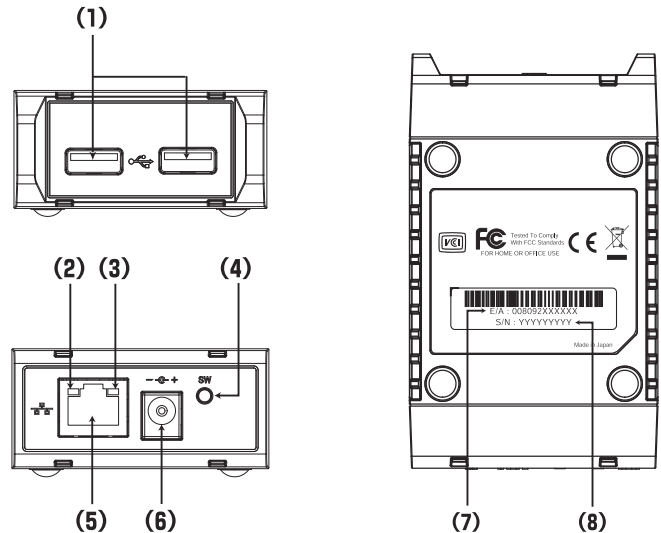


#### Asia Pacific:

Zebra Technologies Asia Pacific, LLC  
120 Robinson Road  
#06-01 Parakou Building  
Singapore 068913  
Phone: + 65 6885 0833  
e-mail: tsasiapacific@zebra.com



#### Name of Parts:



- |   |              |   |                 |
|---|--------------|---|-----------------|
| 1 | USB Port     | 5 | Network Port    |
| 2 | Power LED    | 6 | Power Connector |
| 3 | Link LED     | 7 | MAC Address     |
| 4 | Reset Switch | 8 | Serial Number   |

#### Website

[www.zebra.com](http://www.zebra.com)



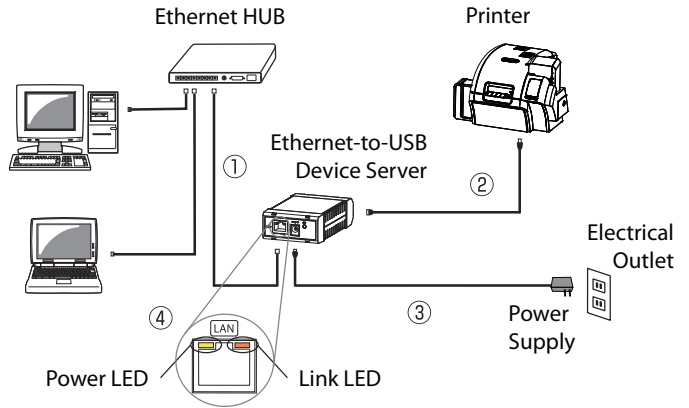
Printed on chlorine-free recycled paper.



P1030560-002

## Step 1: Connect the Device

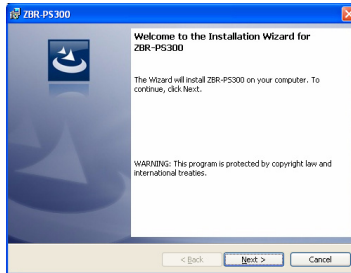
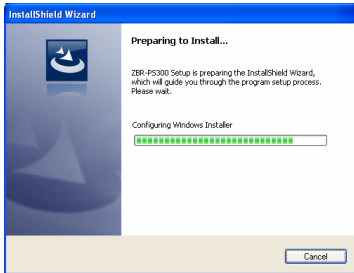
1. Connect the Ethernet cable from the Ethernet Hub to the Ethernet-to-USB Device Server.
2. Connect the USB cable from the Printer to the Ethernet-to-USB Device Server.
3. Connect the Power Supply to the Ethernet-to-USB Device Server, and insert the AC plug into an Electrical Outlet.
4. Ensure that the Power LED and Link LED turn on.



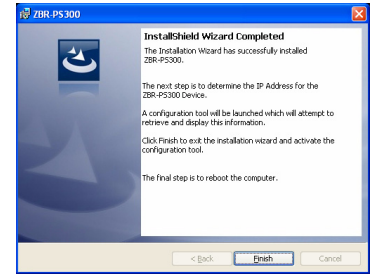
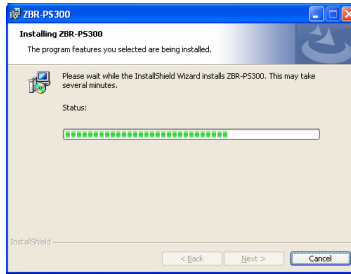
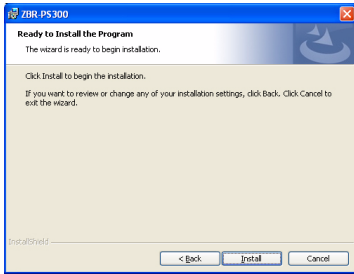
## Step 2: Install the Device Driver

Insert the Setup CD into your computer, and follow the on-screen instructions:

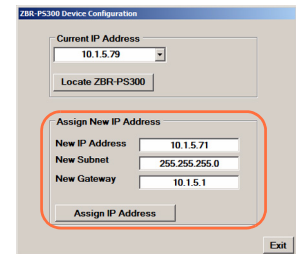
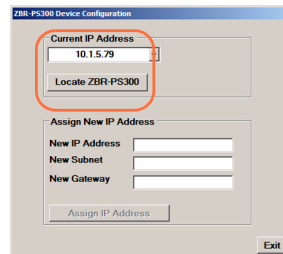
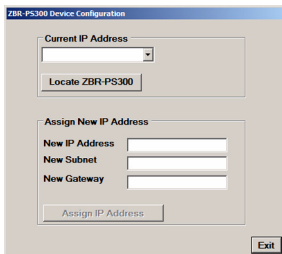
1. Observe the **Preparing to install...** window while the Windows Installer is configured.
2. The **Welcome** window will open. To proceed with the installation, click the **Next** button.
3. Observe the **License Agreement**. To proceed with the installation, select the *I accept the terms of the license agreement* option; and then click the **Next** button.



4. Observe the **Ready to Install the Program** window. To proceed with the installation, click the **Install** button.
5. Observe the **Installing ZBR-PS300** window while the Installation Wizard installs the ZBR-PS300 Driver.
6. When the **InstallShield Wizard Completed** window appears, read the instructions; and click the **Finish** button.



7. Observe the configuration window; and then, depending on your system requirements, do either **7a** or **7b**:
- 7a. Get the Current/Dynamic IP Address: Click on the **Locate ZBR-PS300** button to locate the device's Dynamic IP Address.
- 7b. Set the Static IP Address: Enter the IP Address, Subnet, and Gateway; and then click on the **Assign IP Address** button.



8. Click the **Exit** button. If you are not going to install the ZXP Series 8 Printer Driver, reboot your computer; otherwise go to Step 3.

## Step 3: Install the Printer Driver ( optional )

If using the ZXP Series 8 Driver, select “USB printer” during the installation. After installation, reboot your computer.