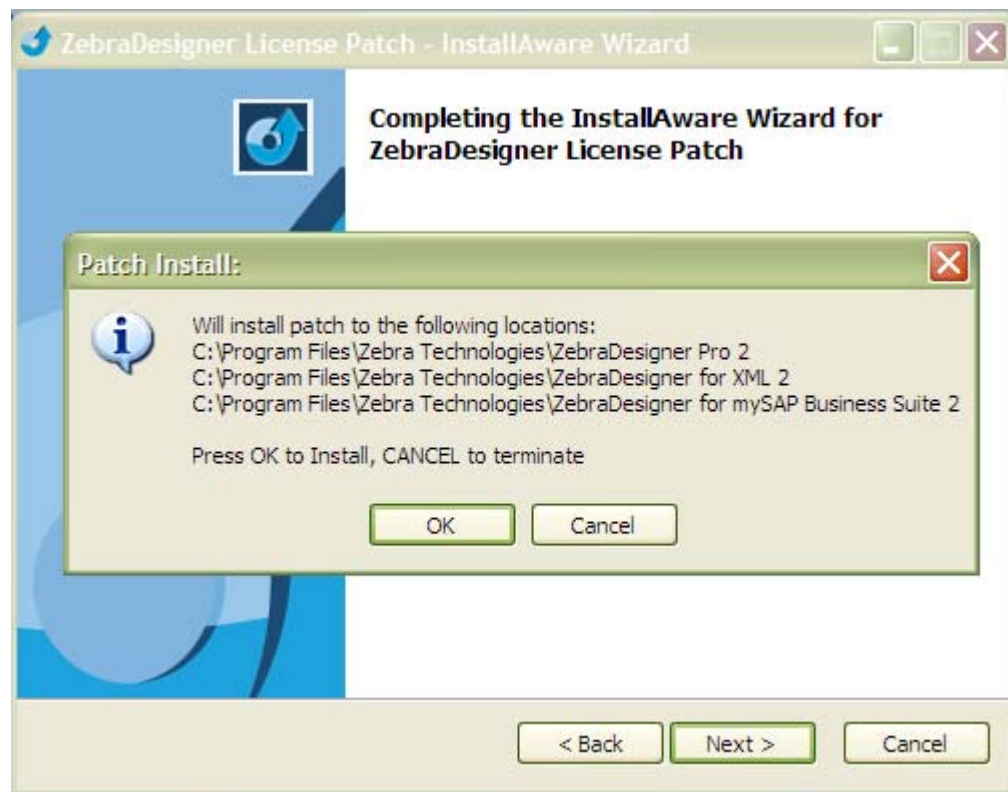


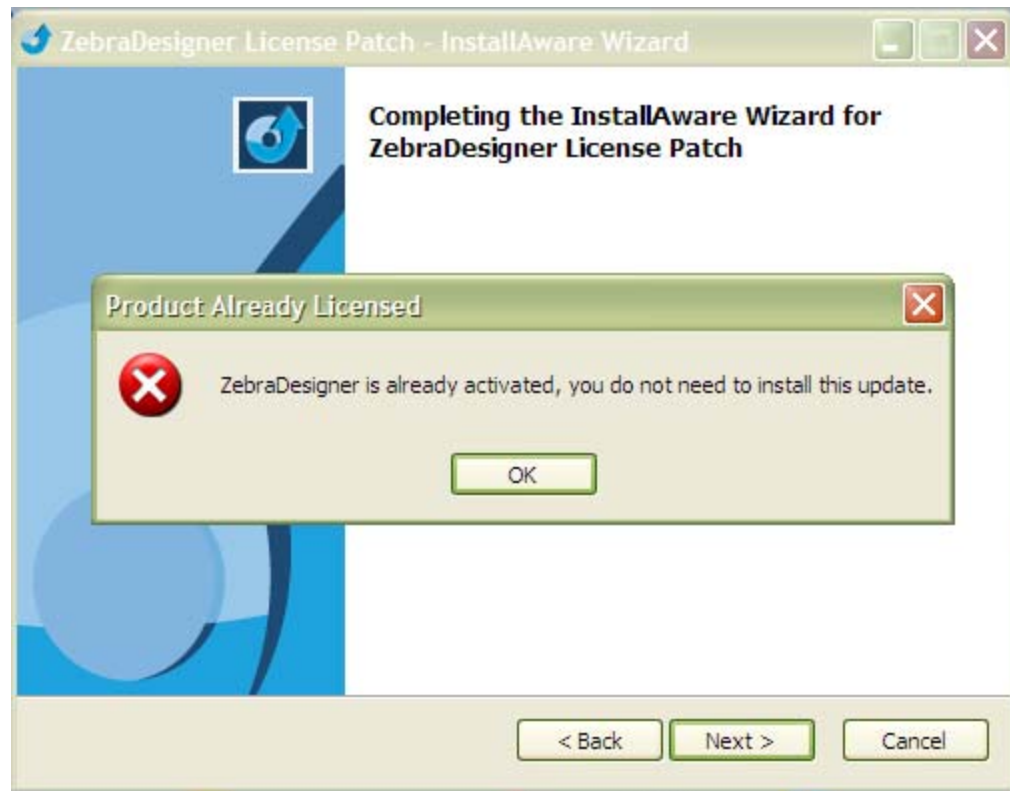
Instructions for updating the ZebraDesigner License Manager files.

1. Running the **zdesignerlicensepatch.exe** program will update files associated with the ZebraDesigner License Manager. It will update one or more of the following software products installed on the computer :-
 - a. ZebraDesigner Pro v2
 - b. ZebraDesigner for XML v2
 - c. ZebraDesigner for mySAP v2
2. If a license for any of the above listed products has successfully been activated on a computer, the update program will not update the files on that computer.
3. Log on to the computer using an account that has administrative privileges and run the **zdesignerlicensepatch.exe** program. Follow the prompts in the wizard.
 - a. If the computer can be updated, a prompt will advise the one or more locations where the updates will occur. See example below.

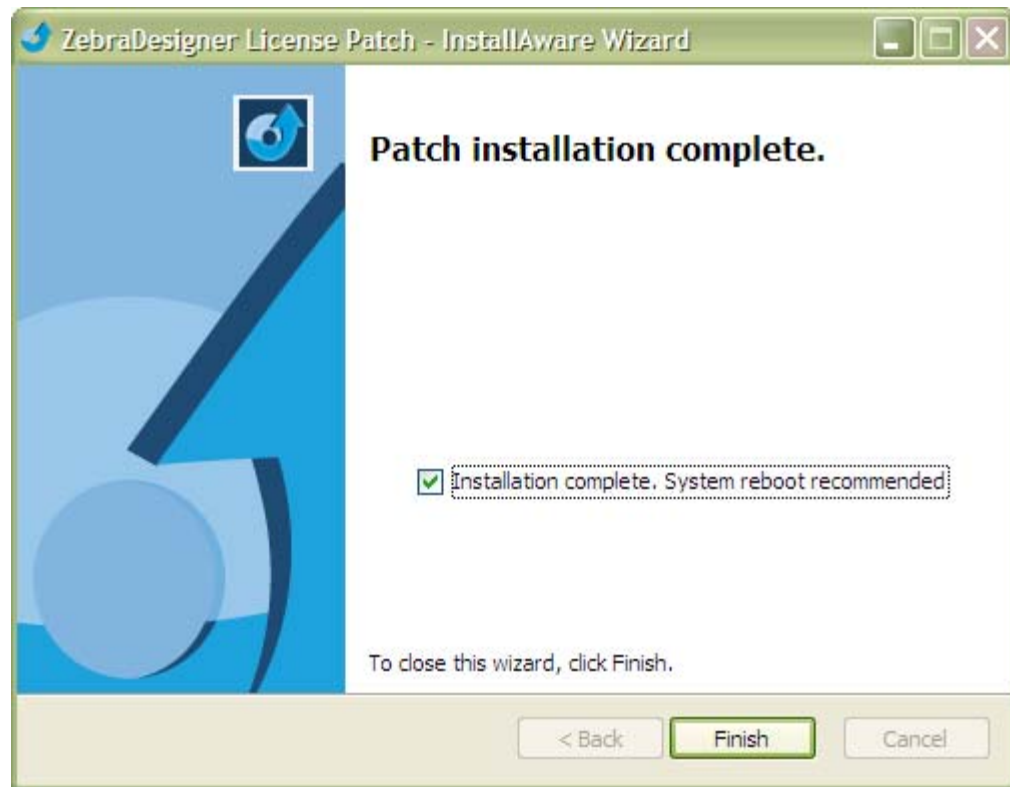


- b. A prompt will be displayed if a license has already been activated on the computer and in this case the updated files will not be applied. See example below.

Instructions for updating the ZebraDesigner License Manager files.

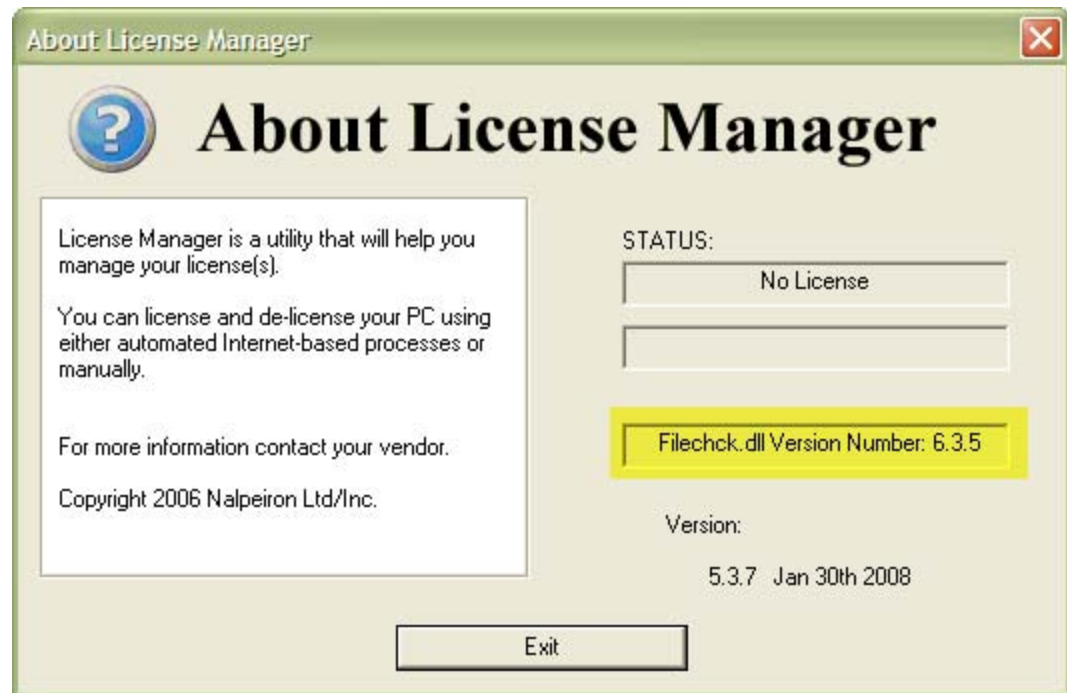


4. The wizard will indicate when the process is complete. It's recommended that the computer is restarted to ensure correct functionality of the licensing components. Check the 'Installation complete' box and click Finish.



5. Run the License Manager from the Start menu. The default location is **Start > Programs > Zebra Technologies > [product]**
where **[product]** is one of the following :-
 - ZebraDesigner Pro 2
 - ZebraDesigner for XML 2
 - ZebraDesigner for mySAP Business Suite 2

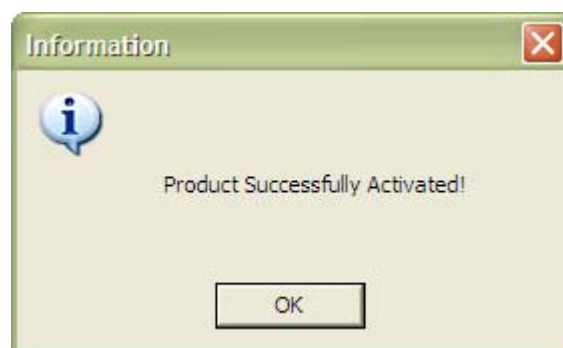
6. On the menu, go to **Help > About License Manager**. Verify the Filechck.dll version is 6.3.5



7. Click Exit to close the about dialog.
8. Click the Internet Activate icon and enter the license number in the box provided. Click the Activate button.



9. A dialog will display indicating a successful activation.



10. If activation is not successful please provide any error messages or codes to Zebra technical support.