

# Zebra® MZ™ Series



## Mini Zebra Printers Take Your Business Where It Needs to Go!

Get the benefits and value associated with Zebra with the MZ series of economical receipt printers. Each tiny MZ printer can be a smart assistant for any mobile receipt printing application where you need quick, simple receipts on demand. Use Bluetooth® 2.0, 802.11b/g, IrDA® or USB to connect to a handheld or smart phone device and produce crisp, clear receipts!

### Sleek, Subtle Sidekicks

These unobtrusive printers can be worn comfortably for a full shift, without interfering with the user's tasks. And because it's a Zebra, there's no compromise in reliability when you choose an MZ series entry-level printer.

These easy-to-operate mobile receipt printers are a great first step for users looking to replace pen and paper documentation, pre-printed receipts, or unreliable mobile printers. Mobile workforces all over the world can benefit from the MZ series' compact convenience in business applications such as:

- Field Repair/Installation
- Deliveries
- Restaurant Tableside Payments
- Mobile Point-of-Sale
- Parking Citations
- Onboard Transportation Ticketing
- Utility Billing/Meter Reading



# Zebra® MZ Series

## Meet the MZ series!

The MZ series: powerful Zebra printing in the palm of your hand. Entry-level mobile receipt printers for simply printing documentation on the go!

### A Sidekick That Won't Weigh You Down

- At 3/4 of a pound or less, these lightweight printers can be worn a full shift, without any burden or bother
- Comfortably wear the printer via belt clip or shoulder strap for unobtrusive and convenient printing

### Simple to Operate

- Single push-button media access for simple re-loading
- Intuitive LEDs indicate on/off, error and connectivity status

### Economical Alternative

- A simple, reliable and affordable printer alternative
- Base model includes AC adapter, IrDA and USB (client)

### Palm-Sized Printing Power

- High-speed processor and extensive memory for printing complex bar codes and fonts
- Secure Bluetooth 2.0, 802.11b/g wireless or USB (client) connectivity
- You may choose between Bluetooth 2.0 or 802.11b/g connectivity; USB and IrDA are in all MZ printers

## MZ 220™



This mini Zebra printer offers compact, 2-inch-wide receipt printing ideal for mobile POS and field sales/service applications.

### Print Characteristics

- Print method: Direct thermal
- Resolution: 203 dpi/8 dots per mm
- Maximum print speed: 3"/76.2 mm per second

### Print Area

- Maximum Width: 1.9"/48.3 mm
- Maximum Length: Continuous

### Memory

8 MB RAM; 4 MB Flash

### Physical Characteristics

- Width: 3.18"/80.8 mm
- Depth: 2.26"/57.4 mm
- Height: 5.34"/135.6 mm
- Weight (with battery): .70 lbs./32 kg

## MZ 320™



For applications that require more content to be printed, opt for this 3-inch print-width MZ series printer.

### Print Characteristics

- Print method: Direct thermal
- Resolution: 203 dpi/8 dots per mm
- Maximum print speed: 3"/76.2 per second

### Print Area

- Maximum Width: 2.9"/73.7 mm
- Maximum Length: Continuous

### Memory

8 MB RAM; 4 MB Flash

### Physical Characteristics

- Width: 4.11"/104.4 mm
- Depth: 2.26"/57.4 mm
- Height: 5.34"/135.6 mm
- Weight (with battery): .75 lbs./34 kg



## What's in the Box?

- A compact MZ series printer, ready to go with USB and IrDA connectivity, and a belt clip
- A cleaning pen and quick-reference guide
- A roll of receipt paper to get started printing right away
- An AC adapter with the appropriate power connector
- A mail-in registration card, so you can keep up to date on news regarding your mobile printer

# Specifications at a Glance\*

## Standard Features

- Battery management (monitors battery for longer life and performance)
- Four-foot drop to concrete (multiple times)
- Resident scalable fonts
- 32-bit high-performance processor
- Sensors:
  - Media door open (mechanical)
  - Optical Sensor (paper out)
- Single-push-button media cover release for easy loading and unloading
- Translucent media cover for media-low/out anticipation
- External power on/off control from keypad, terminal, or printer
- AC adapter included
- IrDA/USB 2.0 support

## Operating Characteristics

### Environment\*\*

- Operating Temp. 14° F/-10° C to 122° F/50° C
- Storage Environ. -4° F/-20° C to 140° F/60° C
- Operating Humidity 10-90% non-condensing
- IP42 rated for resistance to water
- Resists repeated 4' drops to concrete

### Electrical

- 1.5 Ah Li-Ion battery
- Shock-mounted internal components

### Communication Interface

- USB 2.0 port
- Supported Internet Protocols: TCP, UDP, DHCP, FTP, Telnet, Http, LPD, SNMP, SMTP, POP3
- IrDA (standard)
- Bluetooth 2.0 (optional)
- 802.11b/g (optional)
- Windows® compatibility: (CE.NET, Pocket PC, Windows Mobile 2002, Windows Mobile 2003 SE, Windows XP, 2000 and NT via Zebra Windows printer driver and/or our Mobile SDK controls and other applications.)

## Agency Approvals

FCC Part 15 and EN55022 Class B limits; FCC, ICS, and European Standards for Bluetooth and 802.11b/g; CSA and IEC 60950 standard for Safety; NOM, C-tick, VCCI, S-Mark, PSE, CCC, MII

## Media Characteristics

### Max. Roll Size

1.88"/47.8 mm O.D. on a .4"/10.2 mm to .75"/19 mm I.D. core

### Max. Media Width (MZ 220)

2.0" (+/- 0.03")/50.8 mm (+/- 0.76 mm)

### Max. Media Width (MZ 320)

3.0" (+/- 0.03")/76.2 mm (+/- 0.76 mm)

### Thickness

2 mil/.0508 mm to 4 mil/0.1016 mm

### Media Types

Direct thermal receipt paper, or UV coated media

For optimum print quality and printer performance, use genuine Zebra™ supplies.

## Fonts/Graphics/Symbologies

### Fonts and Character Sets

- Standard fonts: 25 bitmapped, 1 smooth, scalable (CG Triumvirate™ Bold Condensed)
- Optional fonts: Downloadable bitmapped and scalable fonts
- International character sets/codepages supported: USA, Germany, France, Sweden, Spain, Norway, Italy, CP850, UK, Latin9, Chinese (Simplified & Traditional), Japanese and Korean supported in 16 x 16 and 24 x 24. Thai (scalable) CP874. Others upon request.

### Graphic Features

Supports user-defined fonts and graphics—including custom logos

## Bar Code Symbologies

- Linear Bar Codes: Code 39, Code 93, UCC/EAN128, Code 128, Codabar (NW-7), Interleaved 2-of-5, UPC-A, UPC-E, 2 & 5 digit add-on, EAN-8, EAN-13, EAN14, 2 & 5 digit add-on
  - 2-Dimensional: Aztec, Maxicode, PDF-417, QR-Code, GS1 DataBar™ (RSS) family
- \*Contains UFST® from Monotype Imaging, Inc.

## Options and Accessories

- Bluetooth 2.0 connectivity
- 802.11b/g connectivity
- Protective silicone skin
- Durability enhancing case
- Shoulder strap
- MZ Series 4-Bay Power Station
- Vehicle adapter

## Print receipts on demand for a variety of applications, including:



**Retail Queue-Busting**—Scan a basket of goods and print a bar coded receipt to reduce the amount of time a customer is at the register, and improve the rate at which lines are processed.



**Citations**—Clear thermal printing on specialty weatherproof material means you collect more fines.



**Hospitality**—Speed lines and capture more sales: Accept mobile payment for concessions in the theme park, in the arena, at tableside, or at other hospitality venues.



**Transportation**—Provide convenience for your passengers: Print tickets or payment receipts in taxis, trains, boats or buses!

# Mobile A to Z

From Accessories, to Supplies, to ZebraCare™ Plans

## AC Adapter



This easy-to-use power adapter comes with each MZ series printer. Simply plug the AC adapter into the printer and charge between uses!

## MZ Series 4-Bay Power Station



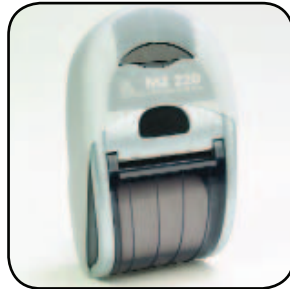
Ideal for users who prefer to "dock and go." At the end of your shift, simply slide the MZ 220 or MZ 320 into this power station to re-charge your printer.

## Vehicle Adapter



This vehicle cigarette lighter adapter allows users to charge your MZ series mobile printer.

## Protective Silicone Skins



These optional silicone skins add a layer of protection and improve handling of your MZ.

## Durability Enhancing Cases



By adding an extra layer of protection with this nylon carrying case, your MZ series printer will be well-prepared for harsh conditions.

## Shoulder Strap



To keep hands free, an optional shoulder strap is available as an alternative to the belt clip.

## ZebraCare™

# ZebraCare™

Reduce the cost of printer downtime due to lost productivity and unbudgeted repair costs by selecting a ZebraCare Depot service agreement. ZebraCare service agreements allow you to:

- Plan and budget annual service needs.
- Reduce the soft costs associated with printers that are down and need repair, and increase uptime.
- Choose the service option right for your organization.

## Genuine Zebra™ Supplies



Ensure high-quality, crisp images and text, and ensure that your receipt and documents remain readable and intact for their entire life, by choosing genuine Zebra supplies.

Zebra offers:

- Both in-stock and custom-made receipt paper.
- Materials that:
  - » Are tested and approved by the Zebra Supplies Research and Development Department.
  - » Meet your application's durability, image quality and archival requirements, as well as your budget.
  - » Can be custom pre-printed with your company logo, instructions, terms and conditions and other information, allowing you to maximize the functionality of your receipts and documents.

For details, contact your authorized reseller, or call Zebra at +1 877 275 9327.

\*Specifications subject to change without notice. \*\*Extremes in temperature and label image density may affect throughput and print image quality. Please contact Zebra for guidance to maximize the performance of your solution. ©2010 ZIH Corp. ZebraCare, and all product names and numbers are Zebra trademarks, and Zebra and the Zebra head graphic are registered trademarks of ZIH Corp. All rights reserved. Bluetooth is a registered trademark of Bluetooth SIG, Inc. IrDA is a registered trademark of Infrared Data Association. Windows is either a registered trademark or trademark of Microsoft Corporation in the United States and/or other countries. CG Triumvirate and UFST are trademarks of Monotype Imaging, Inc. and may be registered in certain jurisdictions. GS1 DataBar is a trademark of GS1 US, Inc. All other trademarks are the property of their respective owners.



www.zebra.com

### Corporate Headquarters

+1 800 423 0442

E-mail: inquiry4@zebra.com

### Asia-Pacific Headquarters

+65 6858 0722

E-mail: apacchannelmarketing@zebra.com

### EMEA Headquarters

+44 (0)1628 556000

E-mail: mseurope@zebra.com

### Latin America Headquarters

+1 847 955 2283

E-mail: inquiry4@zebra.com

### Other Locations

**USA:** California, Georgia, Rhode Island, Texas, Wisconsin **Europe:** France, Germany, Italy, Netherlands, Poland, Spain, Sweden **Asia Pacific:** Australia, China, India, Japan, South Korea **Latin America:** Argentina, Brazil, Florida (USA), Mexico **Africa/Middle East:** Russia, South Africa, United Arab Emirates

GSA#: GS-35F-0268N  
P1023404 Rev. 8 (7/10)