

# Slim Mount

Ring Scanner Hand Mount



**ZEBRA**

## Quick Start Guide

2024/07/02

ZEBRA and the stylized Zebra head are trademarks of Zebra Technologies Corporation, registered in many jurisdictions worldwide. All other trademarks are the property of their respective owners. ©2024 Zebra Technologies Corporation and/or its affiliates. All rights reserved.

Information in this document is subject to change without notice. The software described in this document is furnished under a license agreement or nondisclosure agreement. The software may be used or copied only in accordance with the terms of those agreements.

For further information regarding legal and proprietary statements, please go to:

SOFTWARE: [zebra.com/informationpolicy](https://zebra.com/informationpolicy).

COPYRIGHTS: [zebra.com/copyright](https://zebra.com/copyright).

PATENTS: [ip.zebra.com](https://ip.zebra.com).

WARRANTY: [zebra.com/warranty](https://zebra.com/warranty).

END USER LICENSE AGREEMENT: [zebra.com/eula](https://zebra.com/eula).

## Terms of Use

### Proprietary Statement

This manual contains proprietary information of Zebra Technologies Corporation and its subsidiaries ("Zebra Technologies"). It is intended solely for the information and use of parties operating and maintaining the equipment described herein. Such proprietary information may not be used, reproduced, or disclosed to any other parties for any other purpose without the express, written permission of Zebra Technologies.

### Product Improvements

Continuous improvement of products is a policy of Zebra Technologies. All specifications and designs are subject to change without notice.

### Liability Disclaimer

Zebra Technologies takes steps to ensure that its published Engineering specifications and manuals are correct; however, errors do occur. Zebra Technologies reserves the right to correct any such errors and disclaims liability resulting therefrom.

### Limitation of Liability

In no event shall Zebra Technologies or anyone else involved in the creation, production, or delivery of the accompanying product (including hardware and software) be liable for any damages whatsoever (including, without limitation, consequential damages including loss of business profits, business interruption, or loss of business information) arising out of the use of, the results of use of, or inability to use such product, even if Zebra Technologies has been advised of the possibility of such damages. Some jurisdictions do not allow the exclusion or limitation of incidental or consequential damages, so the above limitation or exclusion may not apply to you.

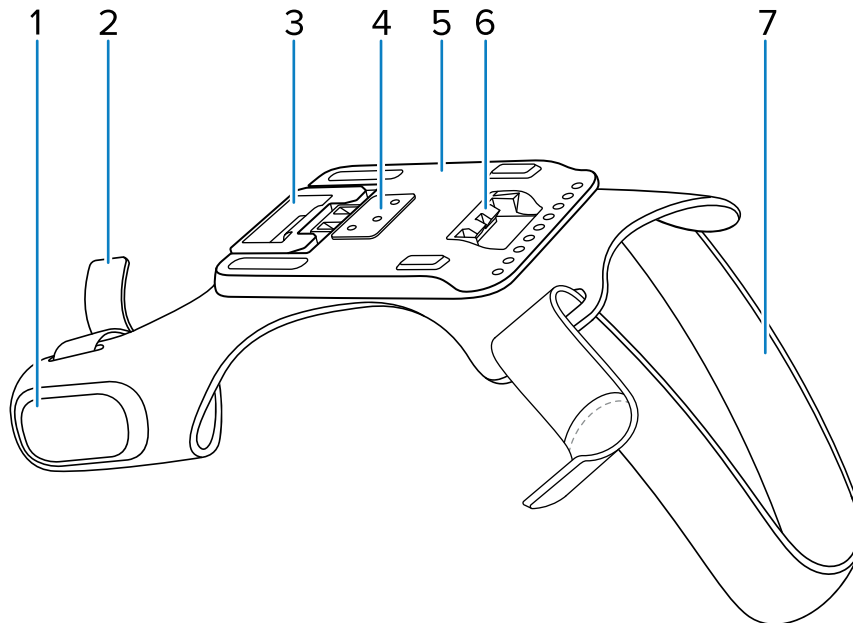
# Slim Mount

The Slim Mount allows you to wear the RS5100/RS6100 on the back of your hand and provides a remote finger trigger.

# Features

This section lists the features of the Slim Mount.

**Figure 1** Side View



Item	Description
1	Trigger
2	Finger strap
3	Scanner latch
4	Trigger contacts
5	Scanner slot
6	Scanner hook
7	Wrist strap

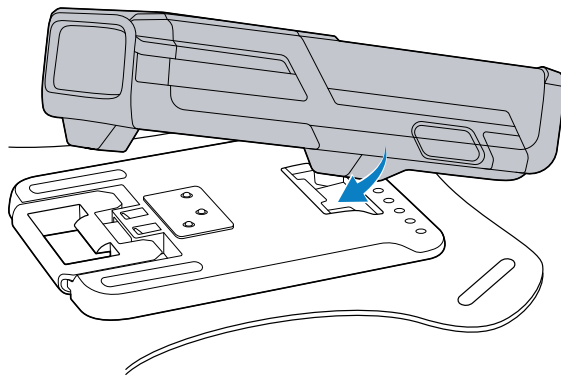


**WARNING:** Do not place a label or sticker on the Slim Mount's hard plastic. It will interfere with the scanner's connection to the mount.

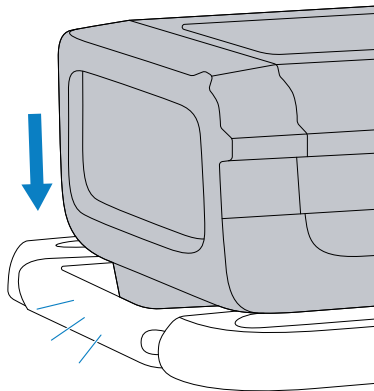
# Mounting the Scanner

Mount the scanner onto the Slim Mount.

1. Push the LED-end of the scanner into the plastic slot.



2. Press the front end of the scanner into the slot. Push firmly until the mount latches close on the scanner.

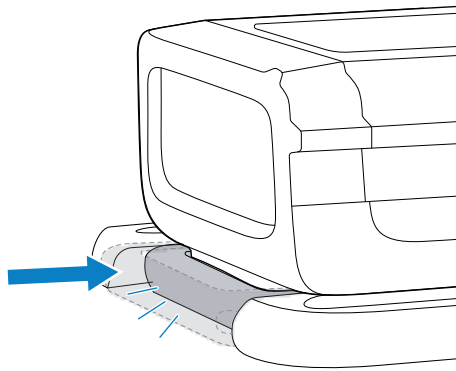


The scanner is ready for use.

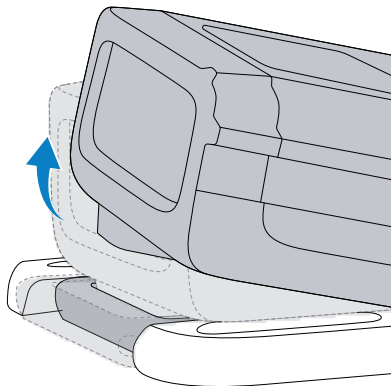
# Removing the Scanner

Remove the RS5100/RS6100 from the Slim Mount to charge the scanner or clean the Slim Mount. To remove the scanner:

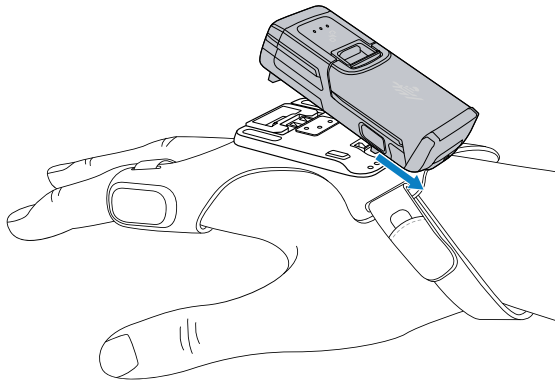
1. Press the Slim Mount mounting latch toward the scanner.



2. The front end of the scanner disengages from the front end of the mount.



3. Pull the scanner back and away from the Slim Mount to disengage the back end from the mount.



# Cleaning Instructions

Use cleaners with approved ingredients to clean the Slim Mount.



**CAUTION:** Always wear eye protection. Read warning labels on compressed air and alcohol products before using. If you have to use any other solution for medical reasons, contact Zebra for more information.



**NOTE:** Avoid exposing this product to contact with hot oil or other flammable liquids. If such exposure occurs, clean the product immediately per these guidelines.

## Approved Cleanser Active Ingredients

100% of the active ingredients in any cleaner must consist of one or some combination of the following:

- Isopropyl alcohol
- Mild dish soap

## Harmful Ingredients

The following chemicals are known to damage the plastics on the device and should not come in contact with it:

- Ammonia solutions
- Compounds of amines or ammonia
- Acetone
- Ketones
- Ethers
- Aromatic and chlorinated hydrocarbons
- Aqueous or alcoholic alkaline solutions
- Ethanolamine
- Toluene
- Trichloroethylene
- Benzene
- Carboic acid
- TB-lysoform
- Bleach products



- Hydrogen peroxide

### Cleaning the Slim Mount

To clean the Slim Mount:

1. Remove the scanner from the Slim Mount.
2. Use an approved cleaning agent or mild detergent on the fabric. Keep the fabric around the trigger dry.
3. Air dry the fabric.
4. Use a soft brush or compressed air to remove debris from the trigger contacts inside the plastic scanner mount.



**CAUTION:** Fabric may damage the trigger contacts.

