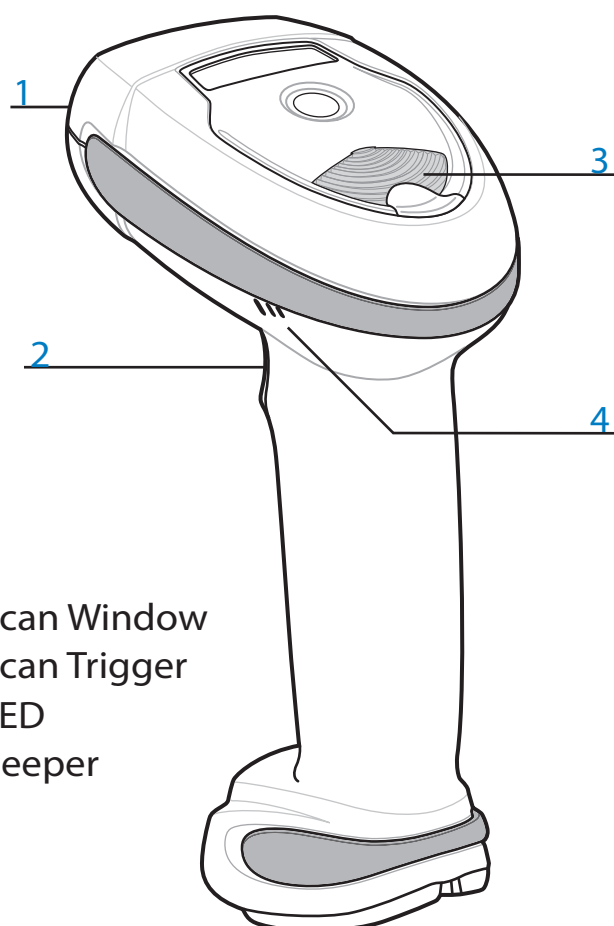
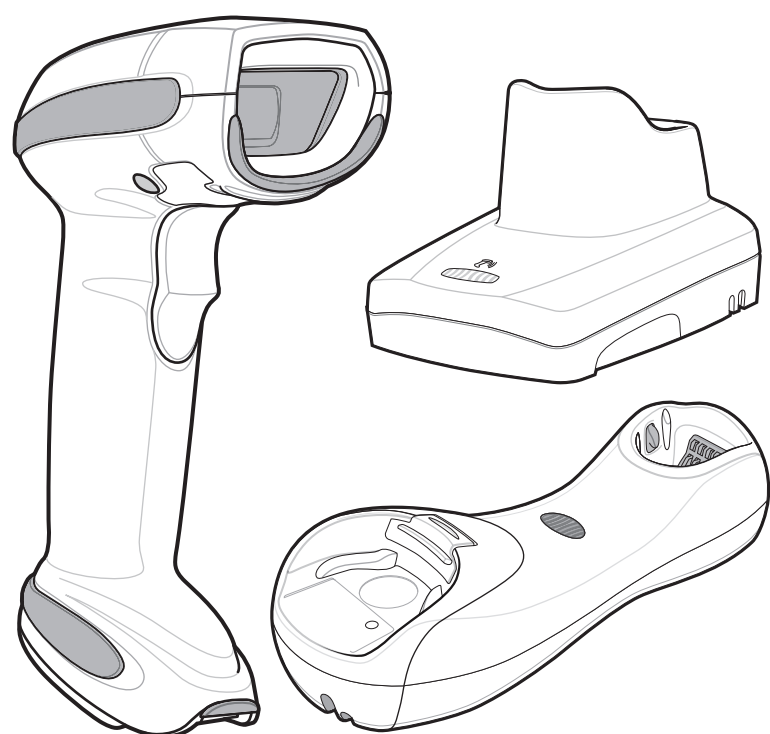


# LI4278 LINEAR IMAGER QUICK START GUIDE

See Product Reference Guide for detailed information

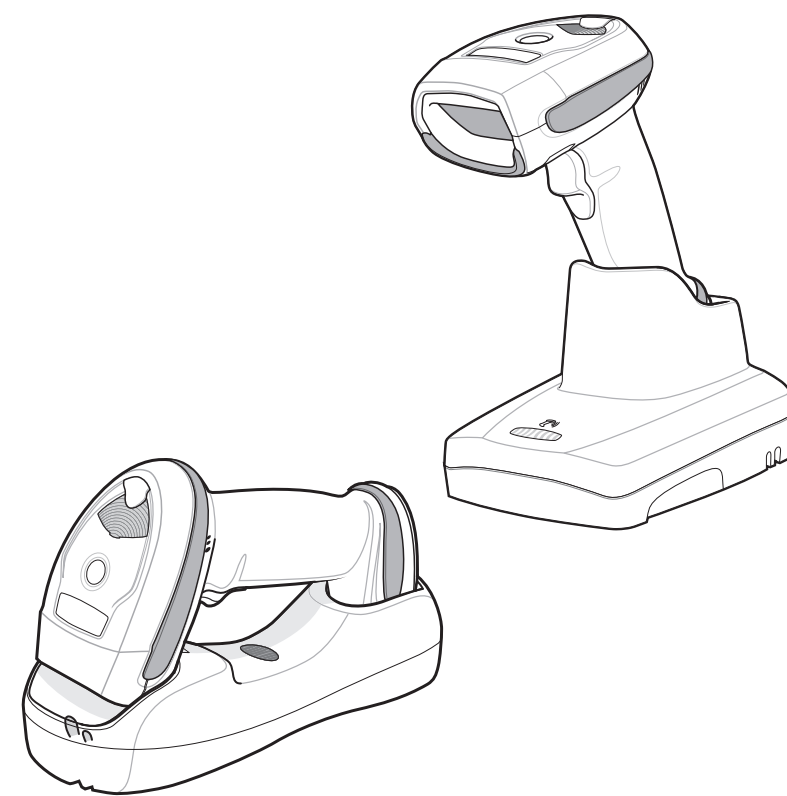
POST IN WORK AREA  
http://www.zebra.com/li4278



- 1 Scan Window
- 2 Scan Trigger
- 3 LED
- 4 Beeper

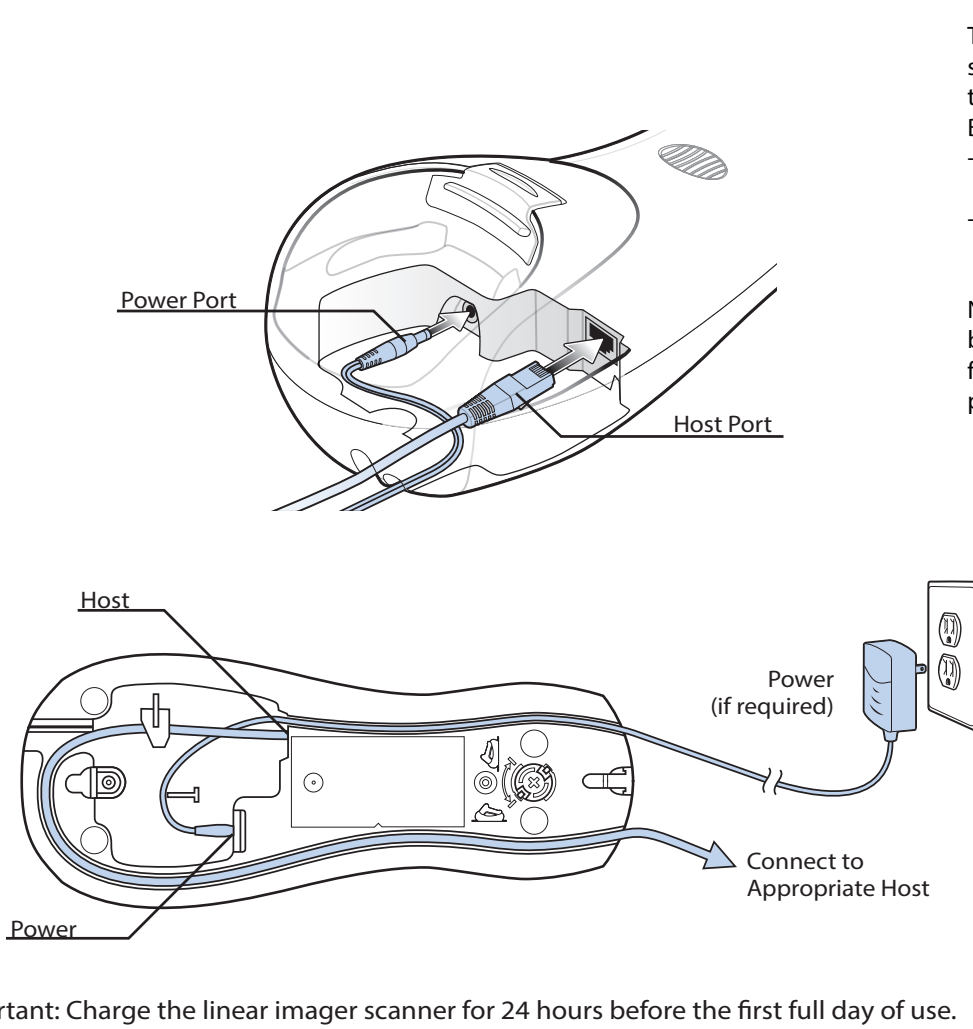
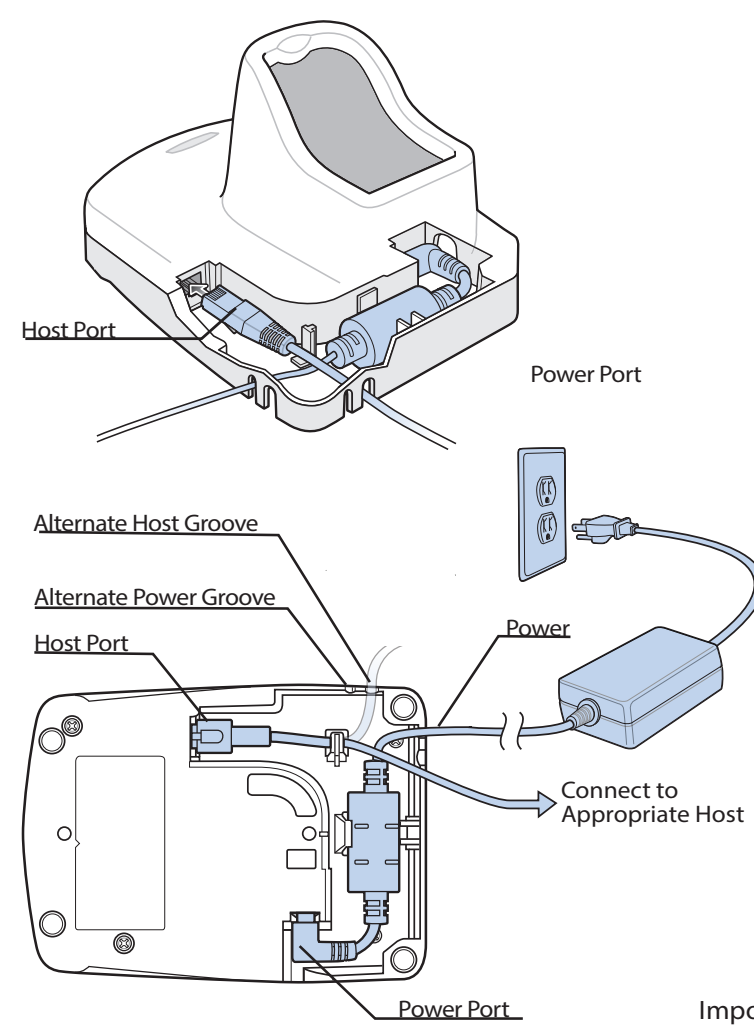
## Cradles

NOTE: The scanner must be paired to the cradle prior to scanning in standard or presentation mode.



Refer to the LI4278 Product Reference Guide, or the cradle Quick Reference Guides for detailed information about cradle setup. When charging, use the cradle power supply for faster charge time.

## STEP 1 - CRADLE CABLE CONNECTIONS



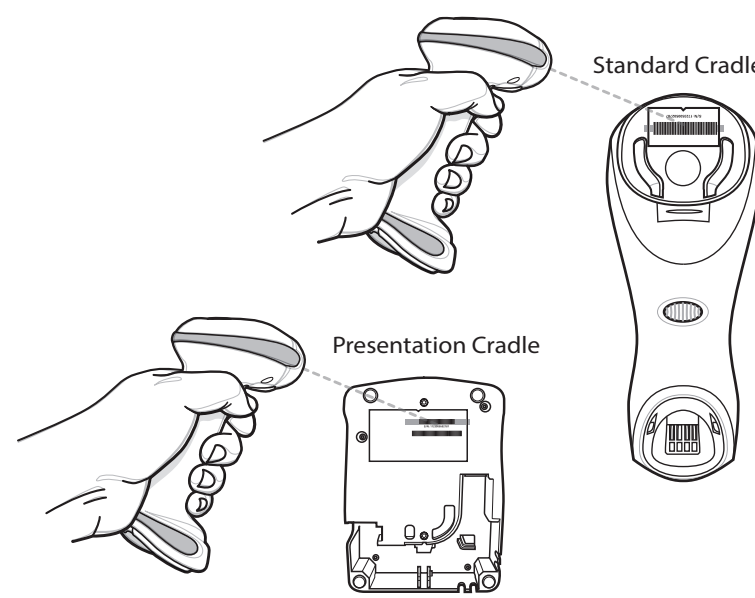
Important: Charge the linear imager scanner for 24 hours before the first full day of use.

## STEP 2 - PAIRING SCANNER TO CRADLE

There are two methods available to pair (marry) the scanner to the cradle: scan the pairing bar code or pair on contacts by inserting the scanner into the cradle. Each cradle type has its own default pairing method. When the Bluetooth connection beep sounds the scanner and cradle are connected.

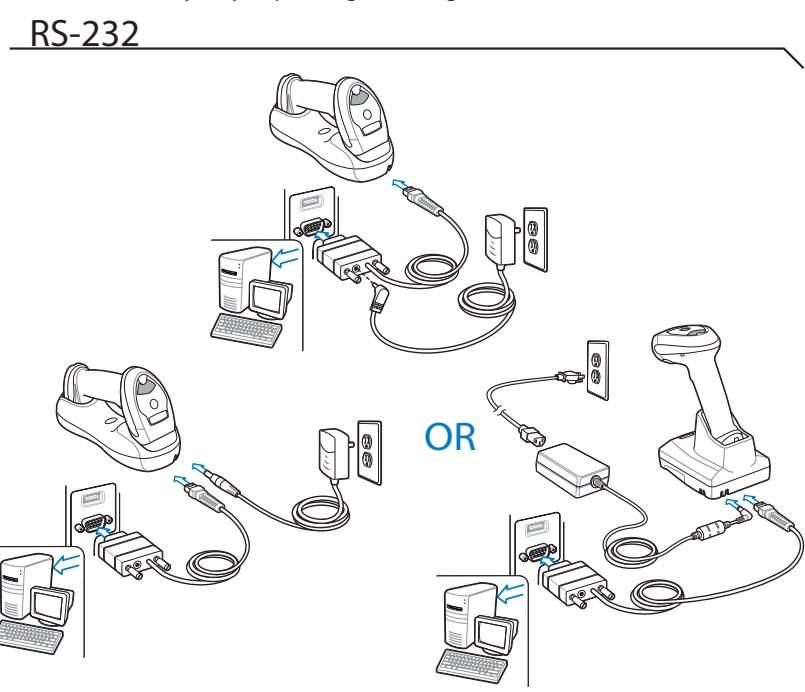
- Presentation cradle default (pair on contacts): cradle and scanner are paired when the scanner is inserted into the cradle.
- Standard cradle default (scan pairing bar code): cradle and scanner are paired when the user scans the pairing bar code on the cradle.

Note: When pair on contacts is enabled you may still use the scan pairing bar code method. You can enable or disable the pair on contacts method for either cradle type by scanning the appropriate pairing method programming bar code from the LI4278 Product Reference Guide.

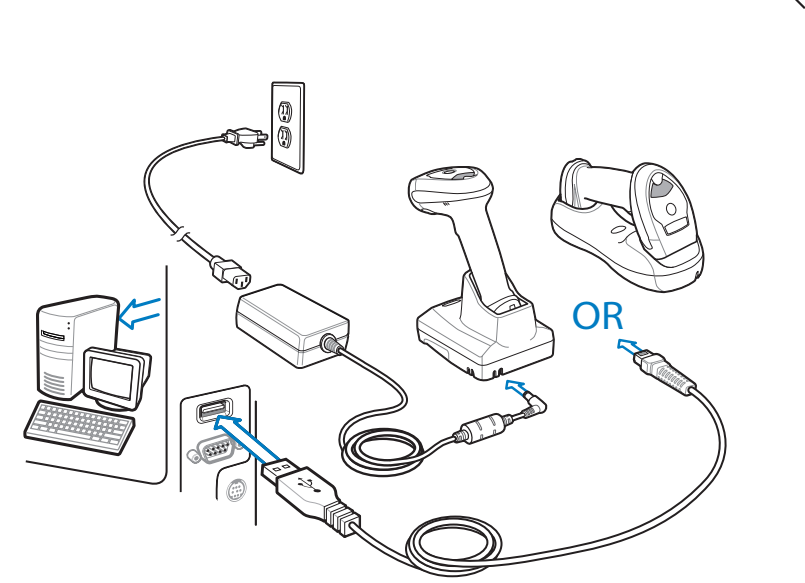


## STEP 3 - CONNECT HOST INTERFACE

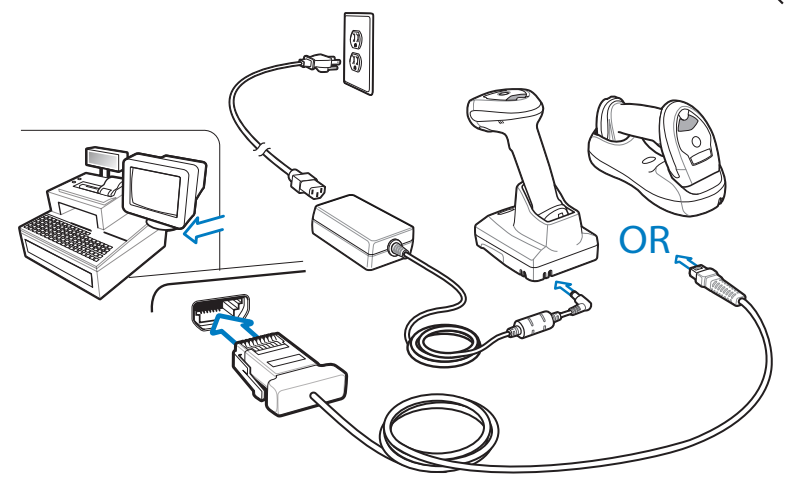
NOTE: Cables may vary depending on configuration



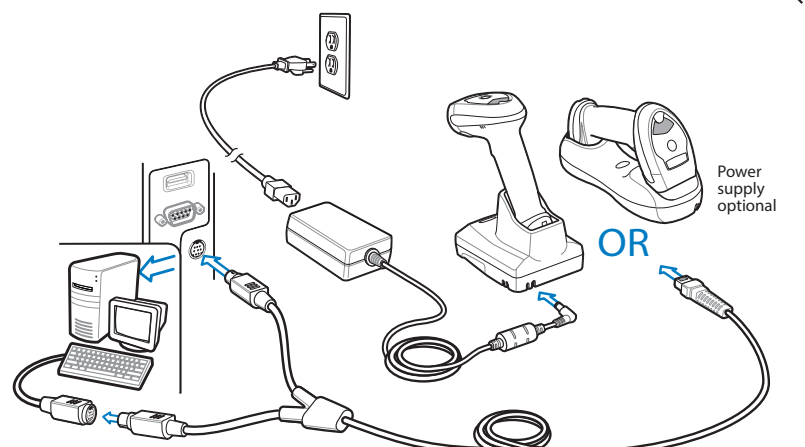
## USB



## IBM 46XX



## Keyboard Wedge



## STEP 4 - SET UP INTERFACE (Scan Host Bar Codes)

### RS-232

Scan **ONE** of the bar codes below



### USB

Scan **ONE** of the bar codes below



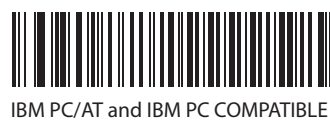
### IBM 46XX

Scan **ONE** of the bar codes below



### Keyboard Wedge

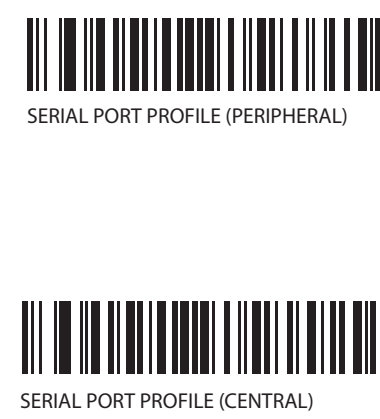
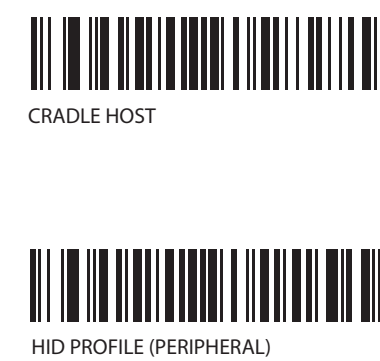
Scan bar code below



## STEP 5 - RADIO COMM HOST TYPES

### Radio Communications Host Types

Scan a bar code below to choose how the scanner connects to a remote device. Scan CRADLE HOST if connecting to the CR0078 cradle. Refer to the Product Reference Guide for detailed information.



### Unpairing/Disconnection



## HELPFUL BAR CODES

### SET DEFAULTS



### BATTERY OFF



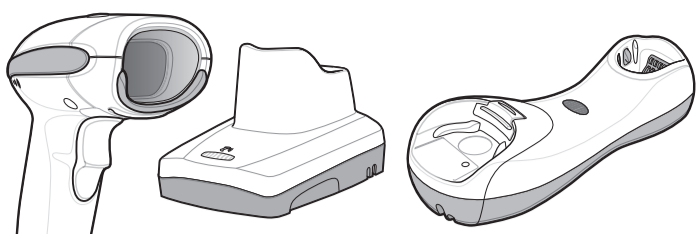
## 123SCAN

123Scan is an easy-to-use, PC-based software tool that enables rapid and easy customized setup via a bar code or USB cable. For more information, visit: <http://www.zebra.com/123Scan>.

# LI4278 LINEAR IMAGER

## SCANNING

POST IN WORK AREA



0 1 2 3 4 5

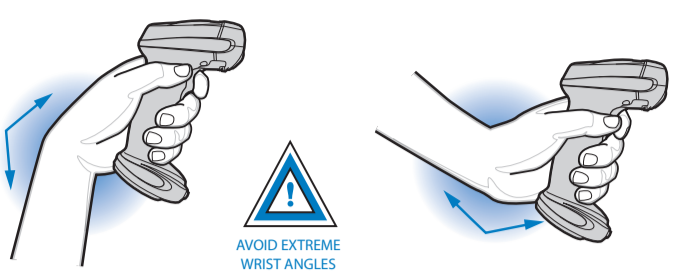
### Aiming



0 1 2 3 4 5

## RECOMMENDED USAGE GUIDE - OPTIMUM BODY POSTURE

### Avoid Extreme Wrist Angles



### Avoid Bending



### Avoid Reaching



### Health and Safety Recommendations

- Ergonomic Recommendations**
- Caution: In order to avoid or minimize the potential risk of ergonomic injury follow the recommendations below. Consult with your local Health & Safety Manager to ensure that you are adhering to your company's safety programs to prevent employee injury.
- Reduce or eliminate repetitive motion.
  - Maintain a natural position.
  - Reduce or eliminate excessive force.
  - Keep objects that are used frequently within easy reach.
  - Perform tasks at correct heights.
  - Reduce or eliminate vibration.
  - Reduce or eliminate direct pressure.
  - Provide adjustable workstations.
  - Provide adequate clearance.
  - Provide a suitable working environment.
  - Improve work procedures.

## BEEPER INDICATIONS

### Standard Use

- Low/medium/high beep: Power up
- Short medium beep: Bar code decoded
- 4 long low beeps: Transmission error detected; data is ignored
- 4 short beeps: Low battery

### Parameter Menu Scanning

- High/low/high/low beep: Successful parameter setting
- High/low beep: Correct programming sequence performed
- Low/high beep: Incorrect programming sequence or "Cancel" bar code scanned

### Wireless Operation

- High/low/high/low beep: Pairing bar code scanned
- High/low beep: Bluetooth disconnection
- Low/high beep: Bluetooth connection established

### Hand-Held Scanning

- Off: Scanner is on and ready to scan, or no power to scanner
- Green: Bar code is successfully decoded
- Red: Transmission error

### Hands-Free (Presentation) Scanning

- Off: No power to scanner
- Green: Scanner is ready to scan
- Off Momentarily: Bar code is successfully decoded
- Red: Transmission error

### Charging

- Off: No power to scanner
- Green - Slow Continuous: Non-critical battery temperature fault
- Green - Fast Continuous: Scanner is charging
- Green - Solid: Scanner is fully charged

Local Contact: \_\_\_\_\_

## LED INDICATIONS

## TROUBLESHOOTING

### Scanner not working

- No power to scanner: Check system power; battery may be discharged; ensure scanner in cradle; check battery door is closed; interface cable is used ensure battery end cap is secured
- Scanner is disabled: Ensure that correct host charge scanner is used; ensure interface cable is used

### Scanner not decoding bar code

- Scanner not programmed for bar code type: Ensure scanner is programmed to read type of bar code being scanned
- Bar code unreadable: Ensure bar code is not defaced; try scanning test bar code of same bar code type
- Distance between scanner and bar code incorrect: Move scanner closer to or further from bar code

### Scanner decoding bar code, but data not transmitting to host

- Scanner not programmed for correct host interface: Scan appropriate host parameter bar codes
- Scanner not paired to correct host interface: Pair the scanner to the cradle
- Interface cable is loose: Ensure all cable connections are secure
- Cradle lost connection to host: In this order: disconnect power supply; disconnect host cable; wait three seconds; reconnect host cable; reconnect power supply; reestablish pairing

### Scanned data incorrectly displayed on host

- Scanner not programmed for correct host interface: Scan appropriate host parameter bar codes

### LED indicates low battery start-up

- Low battery start-up: Wait for red LED to turn green indicating scanner is charging

### Cradle communication error

- Cradle communication error: Inspect contacts; remove and reinsert scanner in cradle

### LED indicates battery temperature

- Battery is above or below normal operating temperature: Do not use scanner; move scanner to location with normal operating temperature; refer to the Product Reference Guide for more information

## HELPFUL BAR CODES

### ADD AN ENTER KEY (Carriage Return/Line Feed)

To add an Enter key after scanned data, scan all **THREE** bar codes in numerical order.

1. SCAN OPTIONS

2. <DATA> <SUFFIX 1>

3. ENTER

### ADD A TAB KEY

To add a Tab key after scanned data, scan all **THREE** Enter key bar codes (left) in numerical order then scan all **FIVE** bar codes below in numerical order.

1. SCAN SUFFIX

2. 7

3. 0

4. 9

5. 9

## REGULATORY INFORMATION

Zebra reserves the right to make changes to any product to improve reliability, function, or design. Zebra does not assume any product liability arising out of, or in connection with, the application or use of any product, circuit, or application described herein. No license is granted, either expressly or by implication, estoppel, or otherwise under any patent right or patent, covering or relating to any combination, system, apparatus, machine, material, method, or process in which Zebra products might be used. An implied license exists only for equipment, circuits, and subsystems contained in Zebra products.

**Power Supply**  
Only approved power supply. The power supply shall be Listed to UL/CULSA 60950-1 and certified to IEC60950-1 and IEC60950-1 with SELV outputs. Use of alternative power supply will invalidate any approval given to this device and may be dangerous.

**Warranty**  
For the complete Zebra hardware product warranty statement, go to: <http://www.zebra.com/warranty>.

**For Australia Only**  
This warranty is given by Zebra Technologies Asia Pacific Pte. Ltd., 71 Robinson Road, #05-02/03, Singapore 068899, Singapore. Our goods come with guarantees that cannot be excluded under the Australian Consumer Law. You are entitled to a replacement or refund for a major failure and compensation for any other reasonably foreseeable loss or damage. You are also entitled to have the goods repaired or replaced if the goods fail to be of acceptable quality and the failure does not amount to a major failure. Zebra Technologies Corporation Australia's limited warranty above is in addition to any rights and remedies you may have under the Australian Consumer Law. If you have any queries, please call Zebra Technologies Corporation at +65 6858 0722. You may also visit our website: <http://www.zebra.com> for the most updated warranty terms.

**Service Information**  
If you have a problem using the equipment, contact your facility's Technical or Systems Support. If there is a problem with the equipment, they will contact the Zebra Global Customer Support Center at: <http://www.zebra.com/support>. For the latest version of this guide go to: <http://www.zebra.com/support>.

**Waste Electrical and Electronic Equipment (WEEE)**

**English:** All products at the end of their life must be returned to Zebra for recycling. For information on how to return product, please go to: <http://www.zebra.com/wee>.

**Spanish:** Para clientes en la Unión Europea, todos los productos deberán entregarse a Zebra al final de su ciclo de vida para que sean reciclados. Si desea más información sobre cómo devolver un producto, visite: <http://www.zebra.com/wee>.

**French:** Clients de l'Union Européenne: Tous les produits en fin de cycle de vie doivent être retournés à Zebra pour recyclage. Pour plus amples informations sur le retour de produits, consultez: <http://www.zebra.com/wee>.

**Italiano:** per i clienti dell'UE: tutti i prodotti che sono giunti al termine del rispettivo ciclo di vita devono essere restituiti a Zebra al fine di consentire il riciclaggio. Per informazioni sulla modalità di restituzione, visitare il seguente sito Web: <http://www.zebra.com/wee>.

**Latvian:** ES klientiem: visi produkti pēc to izstrādāšanas mēža beigām ir jānodod atpakaļ Zebra atbilstoši pārstrādei. Lai iegūtu informāciju par produktu nododāšanu Zebra, lūdzim apmeklēt: <http://www.zebra.com/wee>.

**Hrvatski:** Za kupce u Europi: svi se proizvodi po isteku vijeka trajanja moraju vratiti tvrtki Zebra na reciklažiranje. Informacije o načinu vraćanja proizvoda možete na web-stranici: [www.zebra.com/wee](http://www.zebra.com/wee).

**Lithuanian:** ES vartotojams: visi gaminiai, pasibaigus jų eksploatavimo laikui, turi būti grąžinti užtikrinti kompanijai Zebra. Daugiau informacijos, kaip grąžinti gaminius, rasite: <http://www.zebra.com/wee>.

**Magyar:** Az EU-ban vásárolóknak: Minden törvénytartó termékét a Zebra vállalatához kell eljuttatni újrahasznosítás céljából. A termék visszaváltásának módjairól kapcsolatos információkat látogasson el a <http://www.zebra.com/wee> weboldalra.

**Malay:** Bagi klien di E.U., di-products ketika di jurus waktu faktor terdapat di suatu tempat, anda juga diminta mengah Zebra oleh-oleh. Bagi maklumat lanjut dan/atau hendaklah hubungi Zebra melalui <http://www.zebra.com/wee>.

**Nederlands:** Voor klanten in de EU: alle producten dienen aan het einde van hun levensduur naar Zebra te worden teruggezonden voor recycling. Raadpleeg <http://www.zebra.com/wee> voor meer informatie over het terugzenden van producten.

**Polski:** Klienci z obszaru Unii Europejskiej: Produkty wycofane z eksploatacji należy zwrócić do firmy Zebra w celu ich utylizacji. Informacje na temat zwrócenia produktów prosimy znaleźć na stronie internetowej: <http://www.zebra.com/wee>.

**Portuguese:** Para clientes da UE: todos os produtos no fim de vida devem ser devolvidos à Zebra para reciclagem. Para obter informações sobre como devolver o produto, visite: <http://www.zebra.com/wee>.

**Română:** Pentru clienții din UE: Toate produsele, la sfârșitul duratei lor de funcționare, trebuie returnate la Zebra pentru reciclare. Pentru informații despre returnarea produsului, accesați: <http://www.zebra.com/wee>.

**Slovenčina:** Pre zákazníkov z krajín EÚ: Všetky výrobky musia byť po uplynutí doby ich životnosti vrátené spoločnosti Zebra na recykláciu. Viacšie informácie o vrátení výrobkov nájdete na: <http://www.zebra.com/wee>.

**Slovenski:** Za kupce v E.U. vsi izdelki se morajo po potoku življenja dobe vrati podjetju Zebra za recikliranje. Za informacije o vračilu izdelka obišite: <http://www.zebra.com/wee>.

**Suomi:** Asiakkaiden Euroopan unionin alueelta: Kaikki tuotteet on palautettava huoltokelpoisiksi Zebra-yhtiölle, kun tuoteita ei enää käytetä. Lisätietoja tuotteiden palauttamisesta on osoitteessa <http://www.zebra.com/wee>.

**Svenska:** För kunder inom EU: Alla produkter som uppnått sin livslängds mätte återlämnas till Zebra för återvinning. Information om hur du återlämnar produkten finns på: <http://www.zebra.com/wee>.

**Türkçe:** AB ülkelerinden için: Kullanım süresi dolan tüm ürünler geri dönüştürme için Zebra'ya nakle edilmelidir. Ürünlerin nasıl nakle edileceği hakkında bilgi için lütfen şu adresi ziyaret edin: <http://www.zebra.com/wee>.

**Bluetooth® Wireless Technology**  
This is an approved Bluetooth® product. For more information or to view End Product Listing, please visit <https://www.bluetooth.com/tpg/listings.cfm>.

**Wireless Device Country Approvals**  
Regulatory markings, subject to certification, are applied to the device signifying the device(s) is/are approved for use in the following countries: United States, Canada, Japan, China, S. Korea, Australia, and Europe 1,2.

Please refer to the Declaration of Conformity (DoC) for details of other country markings. This is available at <http://www.zebra.com/doc>.

Note 1: For 2.4GHz or 5GHz Products: Europe includes: Austria, Belgium, Bulgaria, Czech Republic, Cyprus, Denmark, Estonia, Finland, France, Germany, Greece, Hungary, Iceland, Ireland, Italy, Latvia, Liechtenstein, Lithuania, Luxembourg, Malta, Netherlands, Norway, Poland, Portugal, Romania, Slovak Republic, Slovenia, Spain, Sweden, Switzerland and the United Kingdom.

Note 2: The use of RFID Devices have varying restrictions of use; please refer to the Zebra Declaration of Conformity (DoC) for details.

**Operation of the device without regulatory approval is illegal.**  
**Frequency of Operation – FCC and IC**  
2.4 GHz Only  
The available channels for 802.11 b/g operation in the US are Channels 1 to 11. The range of channels is limited by firmware.

**Warnings for Use of Wireless Devices**  
Please observe all warning notices with regard to the usage of wireless devices.  
**Safety in Aircraft**  
Switch off your wireless device whenever you are instructed to do so by airport or airline staff. If your device offers a flight mode or similar feature, consult airline staff as to its use in flight.

**Safety in Hospitals**  
Wireless devices transmit radio frequency energy and may affect medical electrical equipment. Wireless devices should be switched off wherever you are requested to do so in hospitals, clinics or health care facilities. These requests are designed to prevent possible interference with sensitive medical equipment.

**Pacemakers**  
Pacemaker manufacturers recommended that a minimum of 15cm (6 inches) be maintained between a handheld wireless device and a pacemaker to avoid potential interference with the pacemaker. These recommendations are consistent with independent research and recommendations by Wireless Technology Research.

**Persons with Pacemakers:**  
• Should ALWAYS keep the device more than 15cm (6 inches) from your pacemaker when turned ON.  
• Should not carry the device in a breast pocket.  
• Should use the ear furthest from the pacemaker to minimize the potential for interference.  
• If you have any reason to suspect that interference is taking place, turn OFF your device.

**Other Medical Devices**  
Please consult your physician or the manufacturer of the medical device, to determine if the operation of your wireless product may interfere with the medical device.

**RF Exposure Guidelines**  
**Safety Information**  
Reducing RF Exposure – Use Properly  
Only operate the device in accordance with the instructions supplied.

**International**  
The device complies with internationally recognized standards covering human exposure to electromagnetic fields from radio declaration. For information on "International" human exposure to electromagnetic fields refer to the Zebra Declaration of Conformity (DoC) at <http://www.zebra.com/doc>.

**LED Devices**  
Complies with IEC/EN60825-1:2001 & EN 62471: 2008 and IEC62471: 2006 Class 1 LED output.  
**LED Output** – this device contains two LEDs for illumination and aiming.  
**Aim/Illumination**  
Optical Output: 0.87mW  
Pulse Duration: Continuous  
Emitted Wavelength: 590-650nm

Viewing the LED output with certain optical instruments (for example, eye loupes, magnifiers and microscopes) may pose an eye hazard.  
**Caution:** Use of controls or adjustments or performance of procedures other than those specified herein may result in hazardous LED light exposure.

**Statement of Compliance**  
Zebra hereby declares that this radio equipment is in compliance with Directive 2011/65/EU and 1999/5/EC or 2014/53/EU (2014/53/EU supersedes 1999/5/EC from 13th June 2017). The full text of the EU Declaration of Conformity is available at the following internet address: <http://www.zebra.com/doc>.

**Batteries**  
Taiwan - Recycling

EPA (Environmental Protection Administration) requires dry battery producing or importing firms in accordance with Article 15 of the Waste Disposal Act are required to indicate the recycling marks on the batteries used in sales, giveaway or promotion. Contact a qualified Taiwanese recycler for proper battery disposal.

**Battery Information**  
Zebra rechargeable battery packs are designed and constructed to the highest standards within the industry. However, there are limitations to how long a battery can operate or be stored before needing replacement. Many factors affect the actual life cycle of a battery pack, such as heat, cold, harsh environmental conditions and severe drops. When batteries are stored over six (6) months, some irreversible deterioration in overall battery quality may occur. Store batteries at half of full charge in a dry, cool place, removed from the equipment to prevent loss of capacity.  
rusting of metallic parts and electrolyte leakage. When storing batteries for one year or longer, the charge level should be verified at least once a year and charged to half of full charge. Replace the battery when a significant loss of run time is detected. Standard warranty period for batteries is 30 days, regardless if the battery was purchased separately or included as part of the mobile computer or bar code scanner.

**Battery Safety Guidelines**  
• The area in which the units are charged should be clear of debris and combustible materials or chemicals. Particular care should be taken where the device is charged in a non commercial environment.  
• Follow battery usage, storage, and charging guidelines found in the user's guide.  
• Improper battery use may result in a fire, explosion, or other hazard.  
• To charge the mobile device battery, the battery and charger temperatures must be between +32 °F and +104 °F (0 °C and +40 °C)

• Do not use incompatible batteries and chargers. Use of an incompatible battery or charger may present a risk of fire, explosion, leakage, or other hazard. If you have any questions about the compatibility of a battery or a charger, contact Zebra Global Customer Support Center.  
• For devices that utilize a USB port as a charging source, the device shall only be connected to products that bear the USB-IF logo or have completed the USB-IF compliance program.  
• Do not disassemble or open, crush, bend or deform, puncture, or shred.  
• Severe impact from dropping any battery-operated device on a hard surface could cause the battery to overheat.  
• Do not short circuit a battery or allow metallic or conductive objects to contact the battery terminals.  
• Do not modify or remanufacture, attempt to insert foreign objects into the battery, immerse or expose to water or other liquids, or expose to fire, explosion, or other hazard.  
• Do not leave or store the equipment in or near areas that might get very hot, such as in a parked vehicle or near a radiator or other heat source. Do not place battery into a microwave oven or dryer.  
• Battery usage by children should be supervised.  
• Please follow local regulations to promptly dispose of used re-chargeable batteries.  
• Do not dispose of batteries in fire.  
• Seek medical advice immediately if a battery has been swallowed.

**Radio Frequency Interference Requirements – FCC**  
 Tested to comply with FCC Standards FOR HOME OR OFFICE USE  
Note: This equipment has been tested and found to comply with the limits for a Class B digital device, pursuant to Part 15 of the FCC rules. These limits are designed to provide reasonable protection against harmful interference in a residential installation. This equipment generates, uses and can radiate radio frequency energy and, if not installed and used in accordance with the instructions, may cause harmful interference to radio communications. However there is no guarantee that interference will not occur in a particular installation. If this equipment does cause harmful interference to radio or television reception, which can be determined by turning the equipment off and on, the user is encouraged to try to correct the interference by one or more of the following measures:

- Reorient or relocate the receiving antenna
- Increase the separation between the equipment and receiver
- Connect the equipment into an outlet on a circuit different from that to which the receiver is connected
- Consult the dealer or an experienced radio/TV technician for help.

This device complies with Part 15 of the FCC Rules. Operation is subject to the following two conditions:  
(1) this device may not cause harmful interference, and  
(2) this device must accept any interference received, including interference that may cause undesired operation.

**Radio Frequency Interference Requirements – Canada**  
This Class B digital apparatus complies with Canadian ICES-003.  
Cet appareil numérique de la classe B est conforme à la norme NMB-003 du Canada.

**Radio Transmitters**  
This device complies with RSS 210 of Industry Canada. Operation is subject to the following two conditions:  
(1) this device may not cause harmful interference and  
(2) this device must accept any interference received, including interference that may cause undesired operation.  
Ce dispositif est conforme à la norme CNR-210 d'Industrie Canada applicable aux appareils radio exempts de licence. Son fonctionnement est sujet aux deux conditions suivantes:  
(1) le dispositif ne doit pas produire de brouillage préjudiciable, et  
(2) le dispositif doit accepter tout brouillage reçu, y compris un brouillage susceptible de provoquer un fonctionnement indésirable.  
Label Marking: "The Term "IC" before the radio certification only signifies that Industry Canada technical specifications were met.

**CE Marking and European Economic Area (EEA)**  
**Statement of Compliance**  
Zebra hereby declares that this radio equipment is in compliance with Directive 2011/65/EU and 1999/5/EC or 2014/53/EU (2014/53/EU supersedes 1999/5/EC from 13th June 2017).

**Other Countries**  
**Brazil**  
Declarações Regulamentares para LI4278  
NOTA: A marca de certificação se aplica ao Equip. de Radiação Restrita, modelo LI4278. Este equipamento opera em caráter secundário, isto é, não tem direito a proteção contra interferência prejudicial, mesmo de estações do mesmo tipo, e não pode causar interferência a sistemas operando em caráter primário. Para maiores consultas sobre ANATEL consulte o site: [www.anatel.gov.br](http://www.anatel.gov.br).

**Mexico**  
Restrict Frequency Range to: 2.450 - 2.4835 GHz.  
S. Korea  
For a radio equipment using 2400-2483.5MHz or 5725-5825MHz, the following two expressions should be displayed:  
당해 무선설비는 운용 중 전파혼신 가능성이 있음  
당해 무선설비는 전파혼신 가능성이 있으므로 인명안전과 관련된 서비스를 할 수 없습니다.

**Eurasian Customs Union**  
Евразийский Таможенный Союз  
Данный продукт соответствует требованиям знака ЕАС.  
**Ukraine**  
This equipment corresponds to requirements of the Technical Regulation No. 1057, 2008 on restrictions as to the use of some dangerous substances in electric and electronic devices.

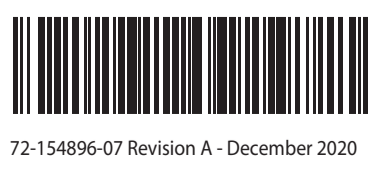
**Taiwan**  
**臺灣**  
第十二條  
經型式認證合格之低功率射頻電機，非經許可，公司、商號或使用者均不得擅自變更頻率、加大功率或變更原設計之特性及功能。  
第十四條  
低功率射頻電機之使用不得影響飛航安全及干擾合法通信；經發現有干擾現象時，應立即停用，並改善至無干擾時方得繼續使用。  
前項合法通信，指依電信規定作業之無線電通信。  
低功率射頻電機須忍受合法通信或工業、科學及醫療用電波輻射性電機設備之干擾。

**Japan (VCCI) - Voluntary Control Council for Interference Class B ITE**  
この装置は、情報処理装置等電波障害自主規制協議会（VCCI）の基準に基づくクラスB情報技術装置です。この装置は、家庭環境で使用することを目的としていますが、この装置がラジオやテレビジョン受信機に近接して使用されることにより、受信障害を引き起こすことがあります。取扱説明書に従って正しい取り扱いをしてください。

**Korea Warning Statement for Class B ITE**

기종명	사용자안내문
B급 기기 (가정용 방송통신기기)	이 기기는 가정용(B급)으로 전자파적합등록을 한 기기로서 주로 가정에서 사용하는 것을 목적으로 하며, 모든 지역에서 사용할 수 있습니다.

# LI4278 LINEAR IMAGER



72-154896-07 Revision A - December 2020



**廢電池請回收**  
EPA (Environmental Protection Administration) requires dry battery producing or importing firms in accordance with Article 15 of the Waste Disposal Act are required to indicate the recycling marks on the batteries used in sales, giveaway or promotion. Contact a qualified Taiwanese recycler for proper battery disposal.

**Battery Information**  
Zebra rechargeable battery packs are designed and constructed to the highest standards within the industry. However, there are limitations to how long a battery can operate or be stored before needing replacement. Many factors affect the actual life cycle of a battery pack, such as heat, cold, harsh environmental conditions and severe drops. When batteries are stored over six (6) months, some irreversible deterioration in overall battery quality may occur. Store batteries at half of full charge in a dry, cool place, removed from the equipment to prevent loss of capacity.  
rusting of metallic parts and electrolyte leakage. When storing batteries for one year or longer, the charge level should be verified at least once a year and charged to half of full charge. Replace the battery when a significant loss of run time is detected. Standard warranty period for batteries is 30 days, regardless if the battery was purchased separately or included as part of the mobile computer or bar code scanner.