

SC-2000

Kiosk Computer Stand



ZEBRA

Installation Guide

2024/09/30

ZEBRA and the stylized Zebra head are trademarks of Zebra Technologies Corporation, registered in many jurisdictions worldwide. All other trademarks are the property of their respective owners. ©2024 Zebra Technologies Corporation and/or its affiliates. All rights reserved.

Information in this document is subject to change without notice. The software described in this document is furnished under a license agreement or nondisclosure agreement. The software may be used or copied only in accordance with the terms of those agreements.

For further information regarding legal and proprietary statements, please go to:

SOFTWARE: zebra.com/informationpolicy.

COPYRIGHTS: zebra.com/copyright.

PATENTS: ip.zebra.com.

WARRANTY: zebra.com/warranty.

END USER LICENSE AGREEMENT: zebra.com/eula.

Terms of Use

Proprietary Statement

This manual contains proprietary information of Zebra Technologies Corporation and its subsidiaries ("Zebra Technologies"). It is intended solely for the information and use of parties operating and maintaining the equipment described herein. Such proprietary information may not be used, reproduced, or disclosed to any other parties for any other purpose without the express, written permission of Zebra Technologies.

Product Improvements

Continuous improvement of products is a policy of Zebra Technologies. All specifications and designs are subject to change without notice.

Liability Disclaimer

Zebra Technologies takes steps to ensure that its published Engineering specifications and manuals are correct; however, errors do occur. Zebra Technologies reserves the right to correct any such errors and disclaims liability resulting therefrom.

Limitation of Liability

In no event shall Zebra Technologies or anyone else involved in the creation, production, or delivery of the accompanying product (including hardware and software) be liable for any damages whatsoever (including, without limitation, consequential damages including loss of business profits, business interruption, or loss of business information) arising out of the use of, the results of use of, or inability to use such product, even if Zebra Technologies has been advised of the possibility of such damages. Some jurisdictions do not allow the exclusion or limitation of incidental or consequential damages, so the above limitation or exclusion may not apply to you.

Overview

The SC-2000 stand is a mounting and point-of-sale solution for the KC50 kiosk computer and touch display secondary monitor.

The stand comes in three height options; counter, tabletop, and floor.

Configurations

This guide refers to all configurations of the SC-2000 stand except where noted otherwise. The following table lists stand configurations.

Table 1 SC-2000 Configurations

Configuration	Kiosk Computers	Height / Application
3PTY-SC-2000-CF2-01	Dual monitor	Counter height
3PTY-SC-2000-CF1-01	Single monitor	Counter height

Dual Monitor Countertop Features

This section lists the features of the dual-monitor countertop stand.

Figure 1 Dual Monitor Countertop Stand Features

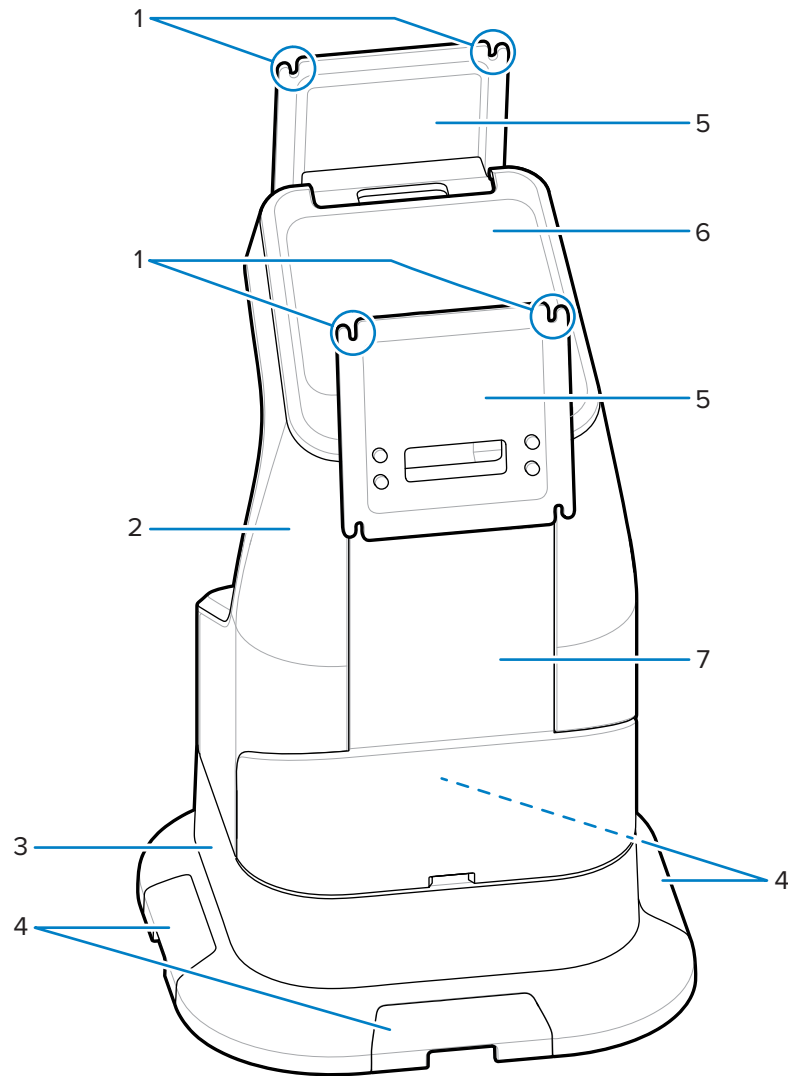


Table 2 Dual Monitor Countertop Stand Features

Item	Description
1	Hanging slots
2	Vertical stand body
3	Base
4	Cable exit covers
5	VESA mounting plate
6	Top stand cover

Table 2 Dual Monitor Countertop Stand Features (Continued)

Item	Description
7	Vertical stand cover

Single Monitor Countertop Features

This section lists the features of the single-monitor countertop stand.

Figure 2 Single Monitor Tabletop Stand Features

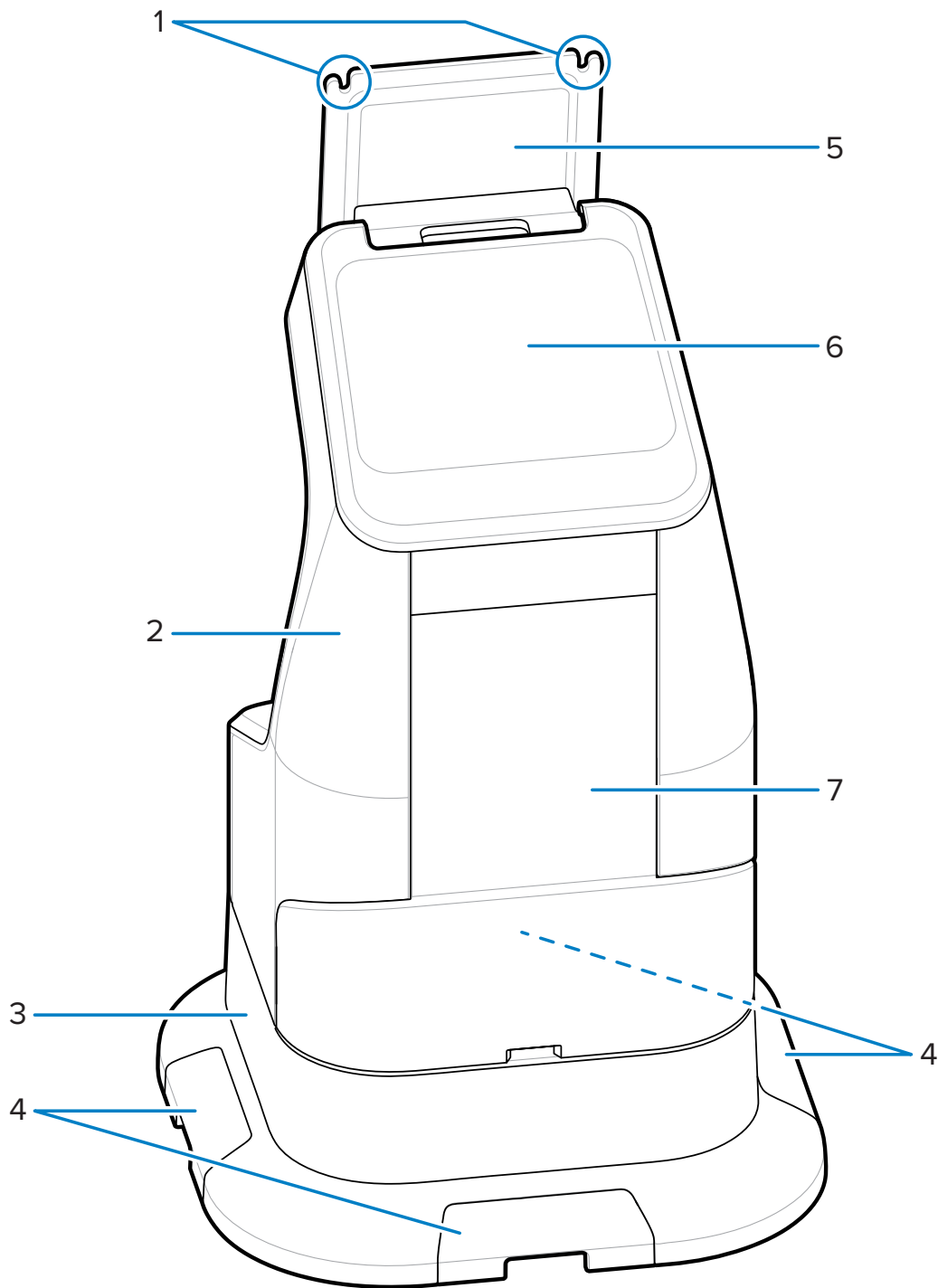


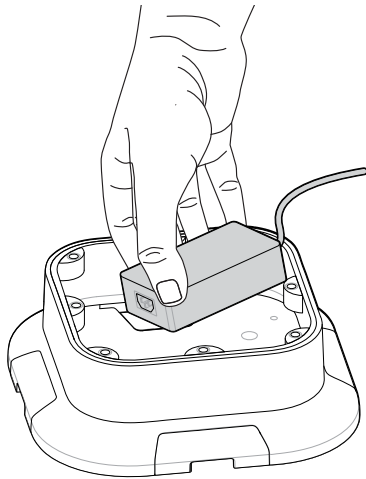
Table 3 Single Monitor Countertop Stand Features

Item	Description
1	Hanging slots
2	Vertical stand body
3	Base
4	Cable exit covers
5	VESA mounting plate
6	Top stand cover
7	Vertical stand cover

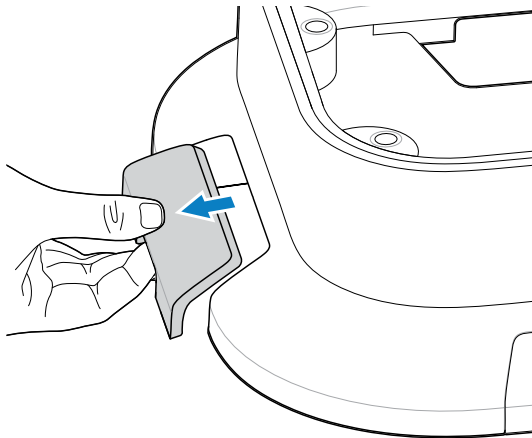
Preparing the base

This section describes the process of placing the cables in the stand base.

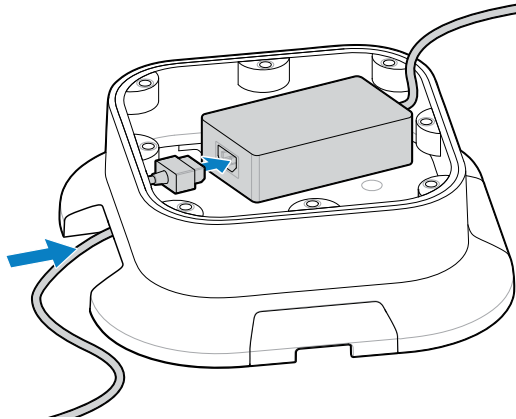
1. Place the AC/DC power adapter in the base.



2. Remove a cable exit cover.



3. Route the AC cable through the base and connect it to the power adapter.



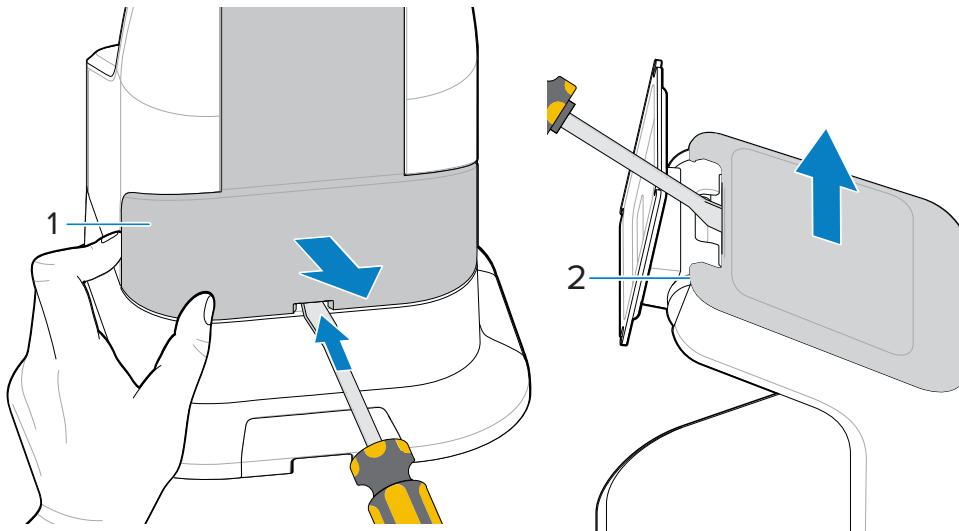
NOTE: If your setup requires any additional cabling (such as an Ethernet or USB-C cable), route them through the base as well.

4. Replace the cable exit cover.

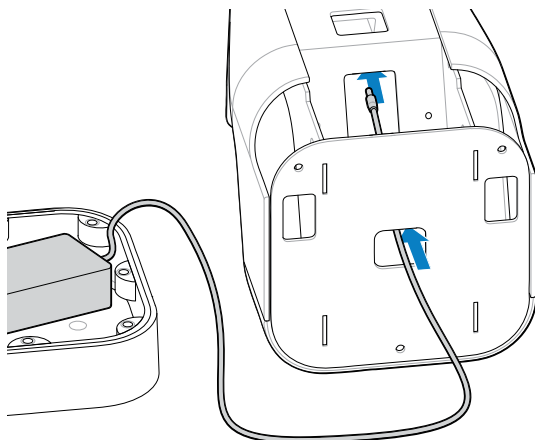
Assembling the Single Monitor Countertop Stand

This section describes the Single Monitor Countertop SC-2000 assembly process.

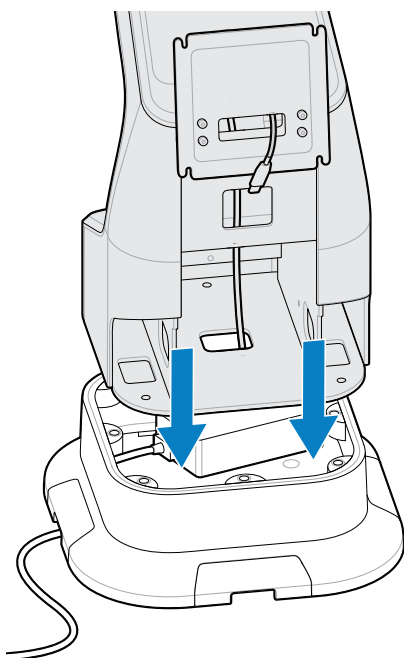
1. Use a flathead screwdriver to remove the vertical stand cover and set it aside.



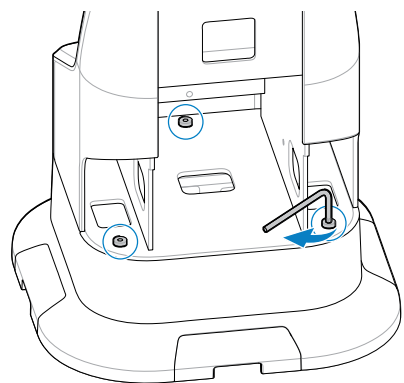
2. Route the DC power cable through the center hole at the bottom of the vertical stand body.



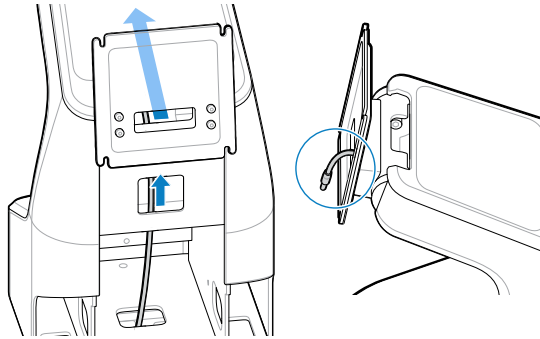
3. Place the vertical stand body on top of the base.



4. Use the provided Allen key to tighten the three bolts to secure the vertical stand body to the base.



5. Pull the cables up through the vertical stand body, and then push it through the slot on the front of the VESA mounting plate.

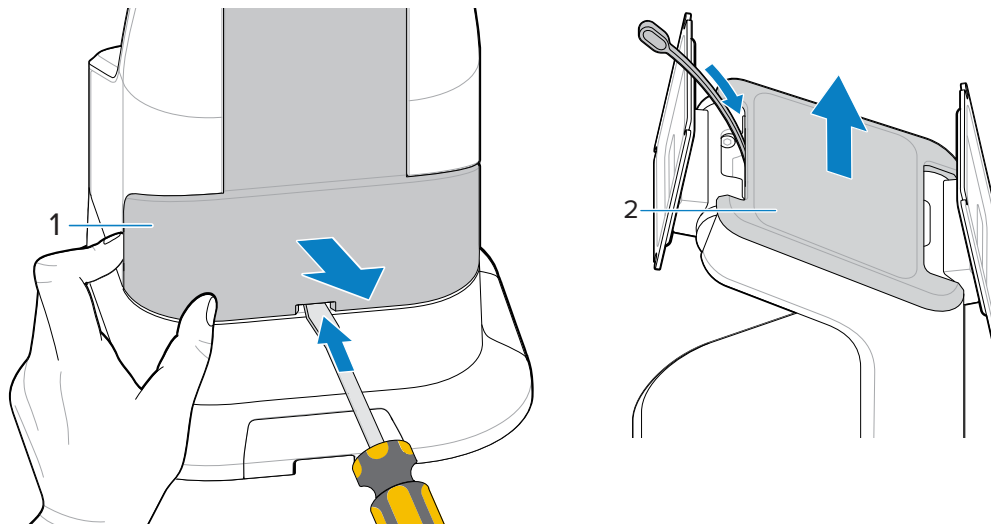


6. Pull enough cable through so that it sits on top of the VESA plate.

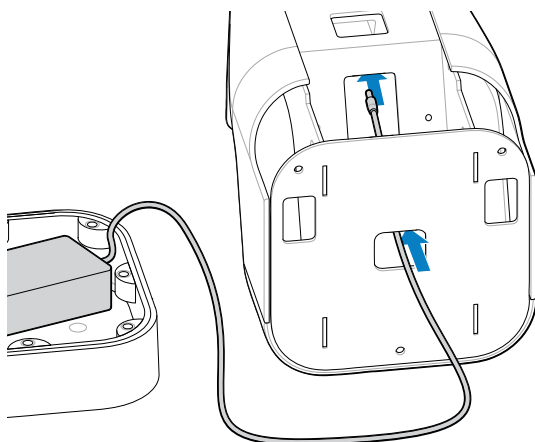
Assembling the Dual Monitor Countertop Stand

This section describes the Dual Monitor Countertop SC-2000 assembly process.

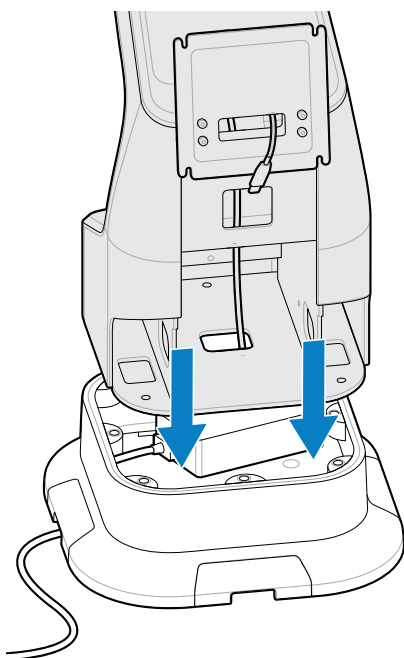
1. Use a flathead screwdriver to remove the vertical stand cover (1) and top cover (2). Set them aside.



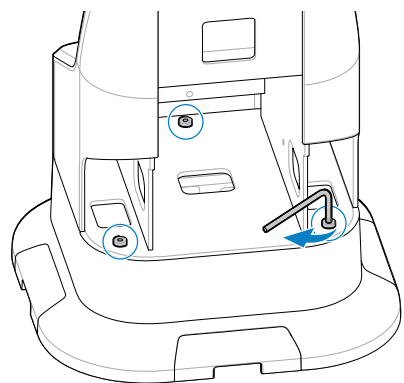
2. Route all cables through the center hole at the bottom of the vertical stand.



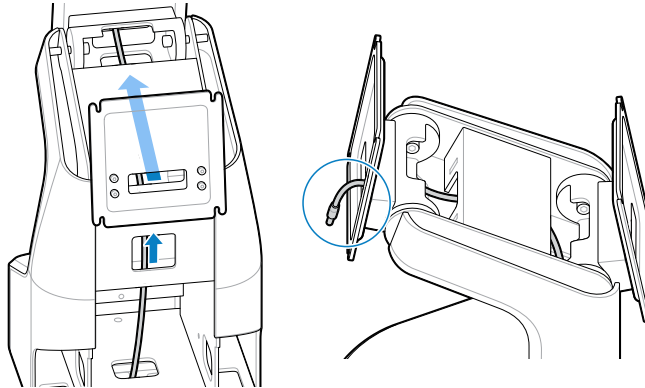
3. Place the vertical stand body on top of the base.



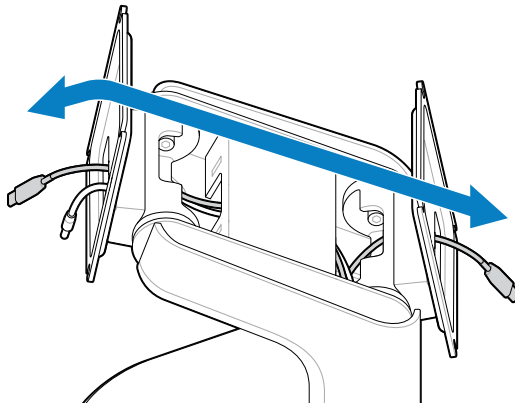
4. Use the provided Allen key to tighten the three bolts to secure the vertical stand body to the base.



5. Pull the cables up through the vertical stand body, and then push them through the slot on the front of the VESA mounting plate.



6. Pull enough cable through so that it sits on top of the VESA plate.
7. Route the USB-C to USB-C Power cable through the front slot of the VESA plate through the top of the stand, and through the second VESA plate slot.



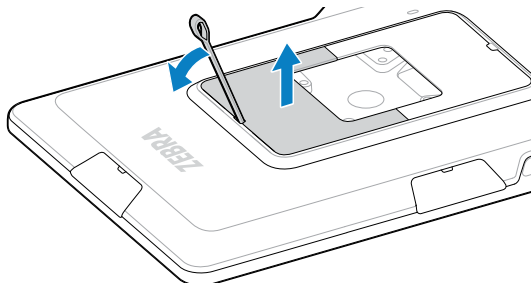
Mounting the KC50

This section describes mounting the KC50 to the stand.

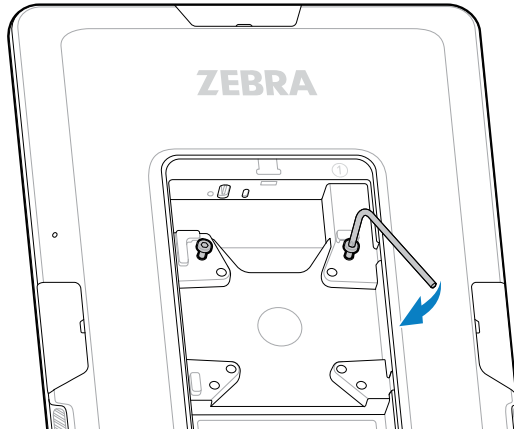


NOTE: These steps assume the KC50 hangs in a portrait orientation. However, the SC-2000 is a modular stand, and you may hang the KC-50 in a landscape orientation as well.

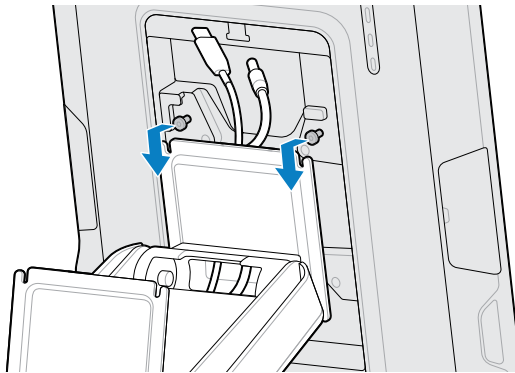
1. Place the KC50 screen side down on a soft cloth.
Leave the protective film on the device (if present) until the device is mounted and ready to use.
2. Use the MC18 removal tool to remove the two covers from the back of the KC50. Set them aside.



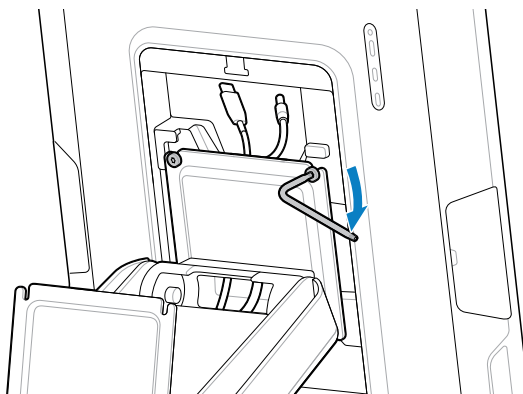
3. Use the Allen key provided with the KC50 to loosely screw the two top screws provided (M4x8 mm) into the 100 mm (3.94 in.) frame on the back of the KC50.



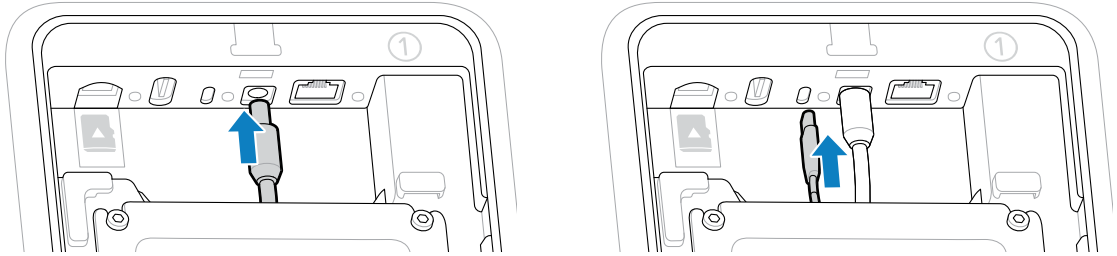
4. Hang the KC50 on the VESA mounting plate by sliding the two screws into the VESA screw slots.



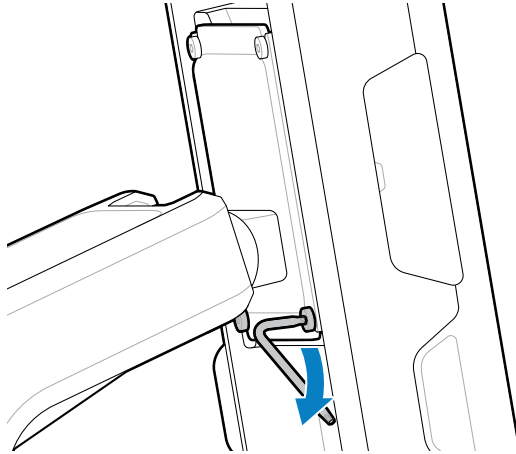
5. Use the Allen key provided with the KC50 to tighten the screws at the top of the KC50 to secure it to the stand.



6. Connect all required cables to the device.

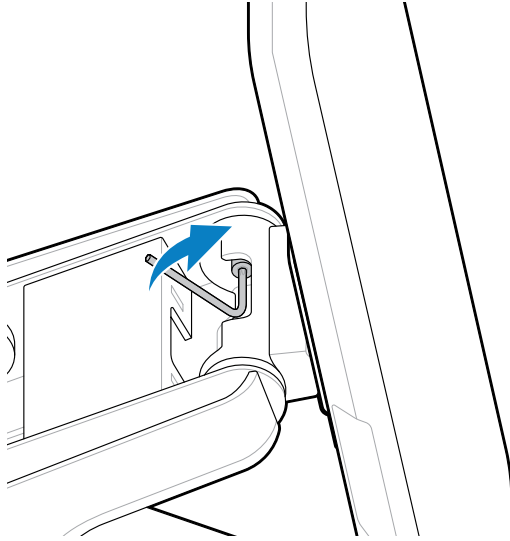


7. Pull the excess cable length down into the stand's vertical body, leaving enough slack so the cables do not pull out of their ports when you adjust the VESA mount angle.
8. Loosely attach the two bottom M4x8 mm screws on the bottom of the VESA plate.
Rotate the VESA plate up to improve access to the bottom of the KC50.



9. Check that the cables are still securely connected.
10. Use the Allen key provided with the KC50 to tighten all four screws to secure it to the stand.
11. Connect the DC power cable to an outlet.

12. (Optional) Use the Allen key provided to adjust the two tension screws to increase or decrease the ease with which the VESA plate rotates.



The KC50 is ready for use.

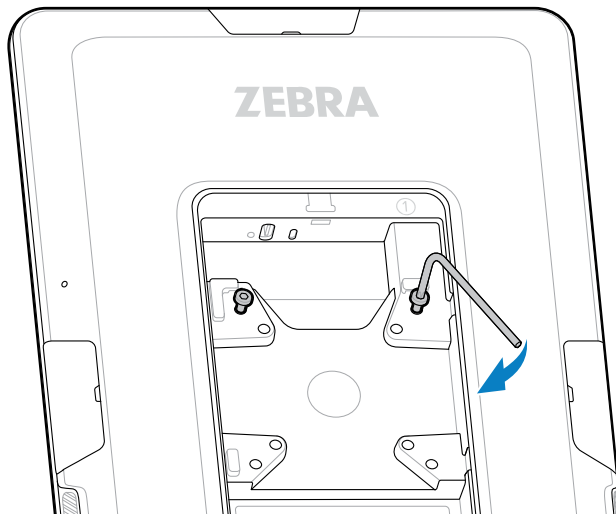
Mounting the TD50


This section describes mounting the TD50 to the stand.

1. Place the TD50 screen side down on a soft cloth.

Leave the protective film on the device (if present) until the device is mounted and ready to use.

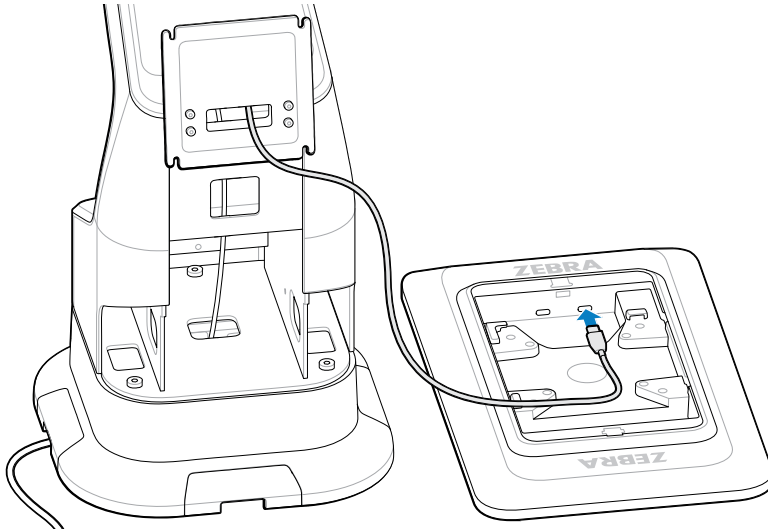
2. Use the Allen key provided with the TD50 to loosely screw the top two screws (M4x8 mm) provided into the 100 mm (3.94 in.) frame on the back of the TD50.



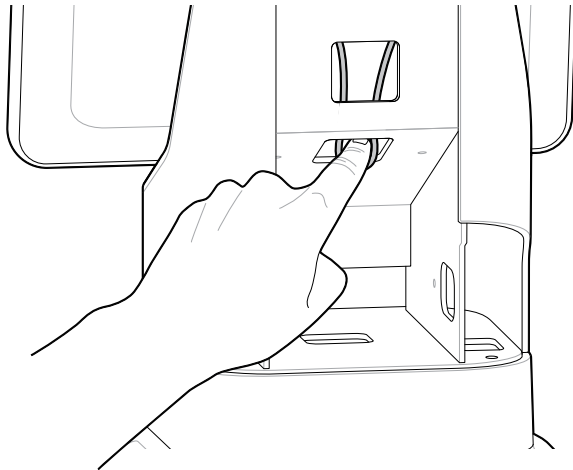
3. Connect the USB-C cable to the  port to power the device.



IMPORTANT: The TD50 screen will not turn on if the USB-C cable is connected to the wrong port. Ensure the cable is connected to the DP port.

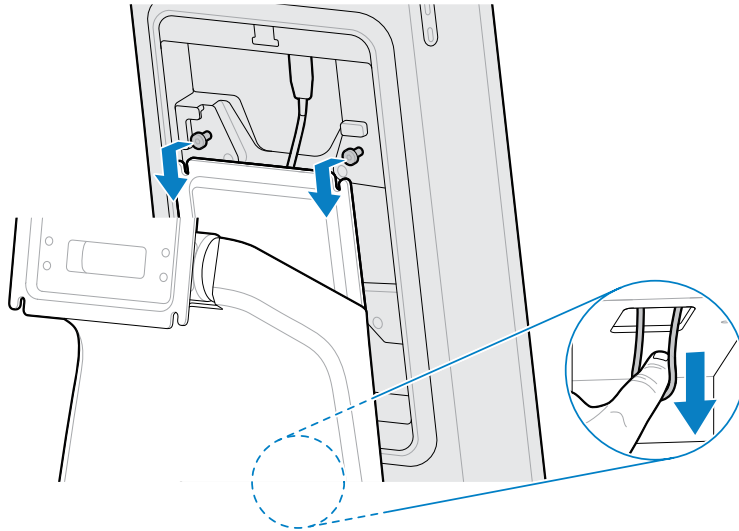


4. Create a loop of the cable and press it down into the vertical body of the stand.

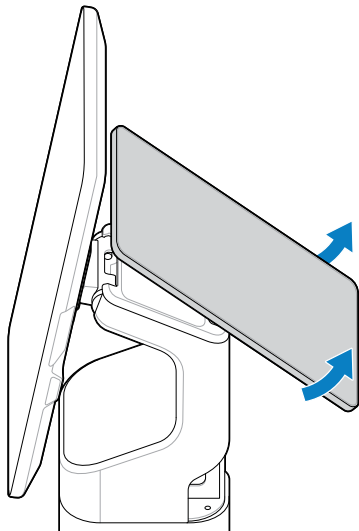


5. Hang the TD50 on the VESA plate by sliding the two screws into the VESA screw slots.

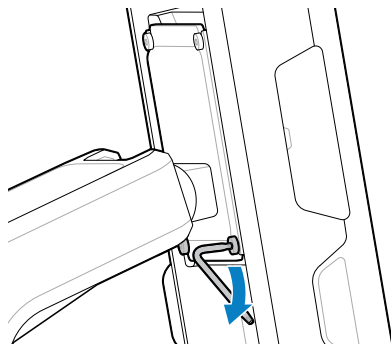
As you bring the TD50 closer to the stand, pull the excess cable down into the vertical stand body by pressing on the loop you created in Step 4.



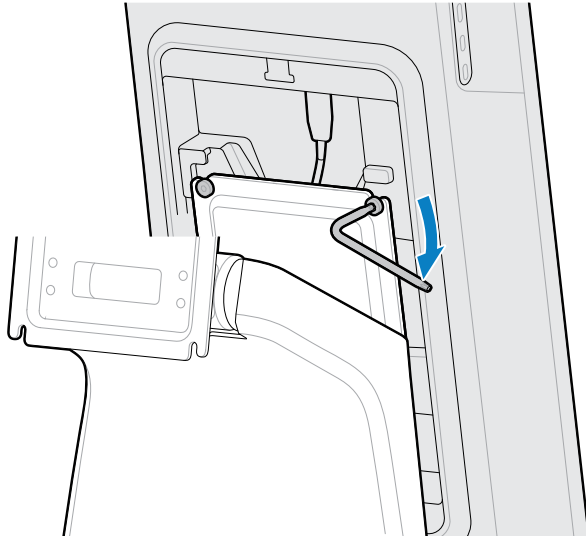
6. Rotate the VESA plate up to improve access to the bottom of the TD50.



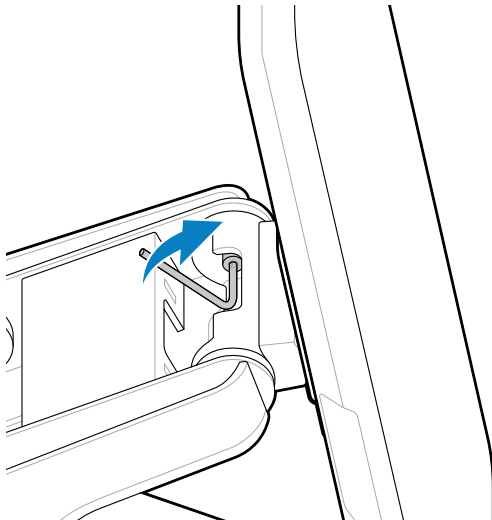
7. Loosely attach the two bottom M4x8 mm screws on the bottom of the VESA plate.



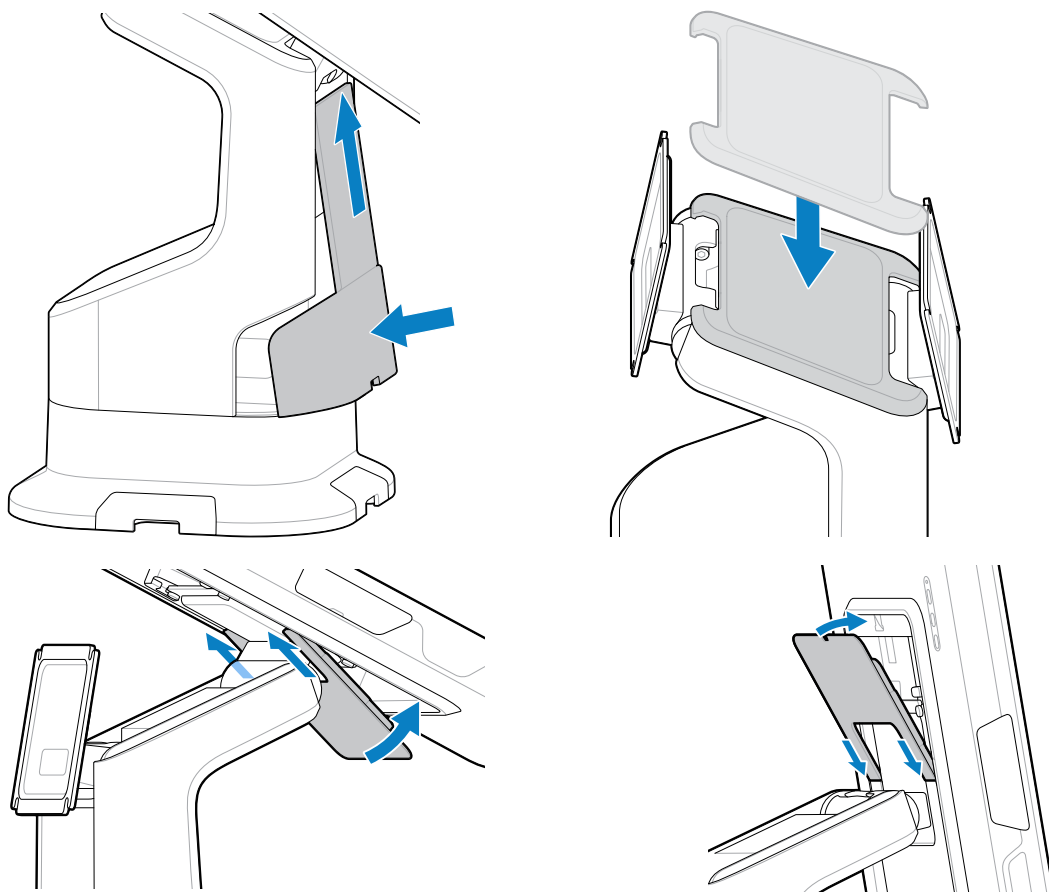
8. Check that the cables are still securely connected.
9. Use the Allen key provided with the TD50 to tighten all four screws to secure it to the stand.



10. (Optional) Use the Allen key to adjust the two tension screws to increase or decrease the ease with which the VESA plate rotates.



11. Replace the KC50 back covers and stand covers to complete the assembly process.



The TD50 is ready for use.

