



Application Note: ZSN065081-V2

Date: June 4, 2012

Product affected: G-Series Printers

Tasks:

- 1 **Obtaining the EPL Asian Fonts from www.zebra.com**
- 2 **Determining which EPL Asian Font Files to use on the G-Series Printers**
- 3 **Installing the ZDownloader Utility and discovering printers.**
- 4 **Downloading Asian fonts to the G-Series Printers.**

Purpose of this document: When purchasing a G-series printer that is to be used with an Asian font, it is necessary for the font to be downloaded to the printer. This is done via the ZDownloader utility, which is available from www.zebra.com

NOTE: Legacy EPL printers could be ordered from the factory with an Asian font pre-loaded. G-Series printers cannot be ordered from the factory with Asian fonts pre-loaded. This software note explains how to configure your G-Series printer with an EPL Asian font which is compatible with your legacy EPL printer.

Obtaining the EPL Asian Fonts for G-Series Printers from www.zebra.com

The EPL Asian Fonts for G-Series Printers are available to download as a self-extracting zip file from the utilities downloads page on www.zebra.com/utilities. After saving the downloaded file, run the self-extracting executable file.

NOTE: By default, font files will be located in the C:\EPL_ASIAN_FONTS directory, when extracted from the downloadable executable file. Please make a note of the location if you change this default directory.

Applicable Printers

To determine which file to load onto your G-Series Printer, see the chart below:

Legacy Printer Configuration Number	Legacy Printer Description	EPL Font File Name for G-Series Printer	Printer Resolution (dpi)	Language
2844-xxxxx-x8xx	LP2844, TLP2844	chn.zpl	200	Chinese
2844-xxxxx-x9xx	LP2844, TLP2844	jpn.zpl	200	Japanese
2844-xxxxx-10xx	LP2844, TLP2844	kor.zpl	200	Korean
3842-xxxxx-x8xx	TLP3842	3chn.zpl (See Note 1 below)	300	Chinese
3842-xxxxx-x9xx	TLP3842	3jpn.zpl (See Note 1 below)	300	Japanese
3842-xxxxx-10xx	TLP3842	3kor.zpl (See Note 1 below)	300	Korean
120742-201 120742-001	888-DT 888-TT	cht.zpl (See Note 1 below)	200	Traditional Chinese
120742-301 120742-101	888-DT 888-TT	chs.zpl (See Note 1 below)	200	Simplified Chinese

NOTE: In order to store the compatible EPL fonts on a G-Series printer, the G-Series printer requires the extended memory option.

Installation of the ZDownloader Utility and printer discovery

- 1 Install the ZDownloader Utility
- 2 Use the ZDownloader Utility to discover printers.

1. **To install the ZDownloader Utility:** Download the utility from www.zebra.com/utilities. Double click on the setup.exe file. The Firmware Downloader Setup wizard will appear.

NOTE: If installing over an existing installation of the Firmware Downloader, you should "remove" first, instead of "repair", and then install the new version after the old version has been removed.



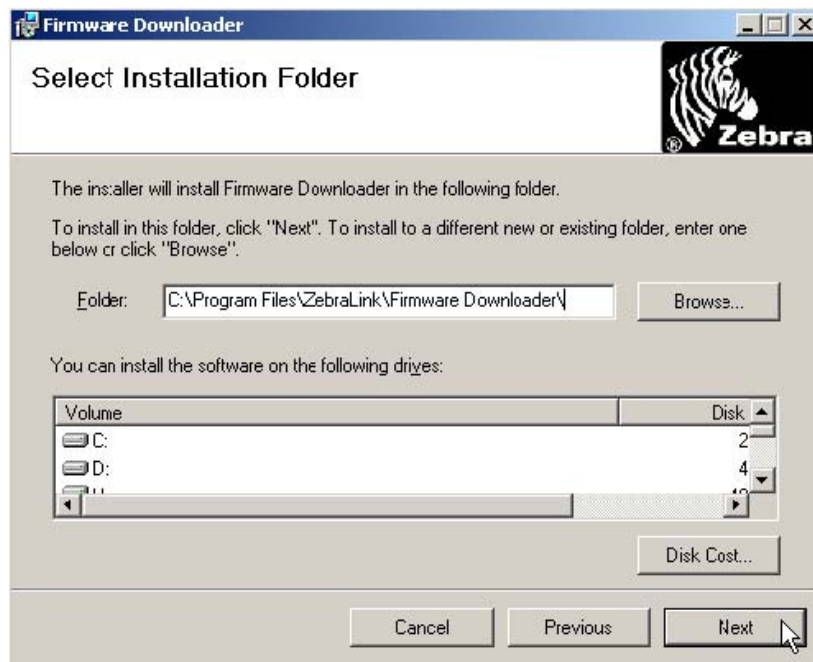
Click “Next” to continue.

Click the appropriate radio button to indicate acceptance of the End User License Agreement.

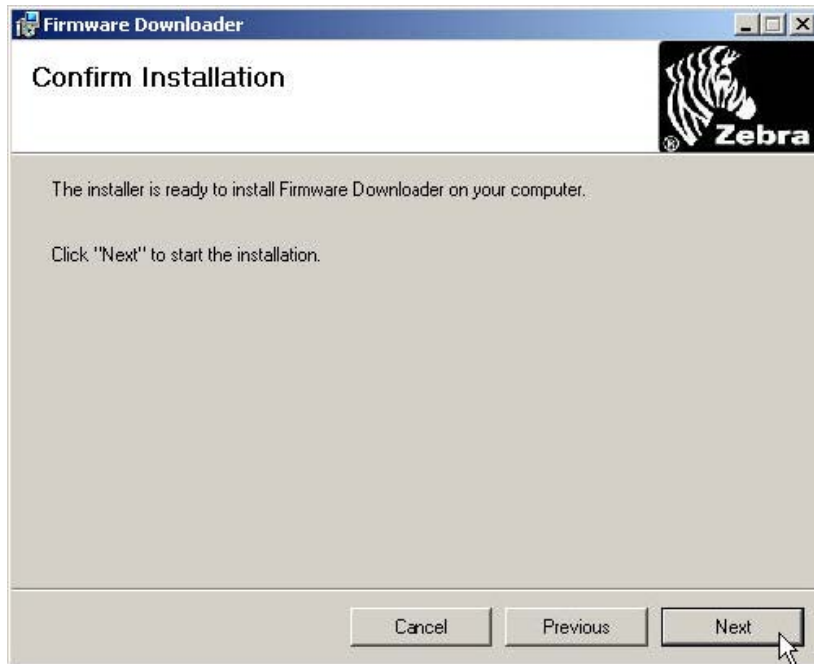
Click “Next” to continue.



Select the correct folder in which to install the downloader. To view available disk space, click on the “Disk Cost” button.



Click “Next” to continue. A Confirm Installation Window appears. Click “Next” to begin the installation.



Click “Close” to exit after successful installation.

2. To Discover Printers Using the ZDownloader


Add Printers to the List


There are two ways to add printers to the list: Auto-Detect and Manual.

If your printer is connecting via an USB or an IP Ethernet interface, use Auto-Detect to add the printer(s).

If your printer is connecting via the serial or parallel interfaces, or is not detected by using the Auto-Detect method, use the Manual add method.

Auto-detect Printers

NOTE: When using Microsoft® Windows Vista®, printers may not be discovered over a network using the Printer↔ Auto-Detect  function; they must be added manually (see below).

To Auto-Detect printers connected via the USB or IP Ethernet interfaces, press the “Auto-Detect” Toolbar button  and choose the menu option “Printer↔ Auto-Detect” or right click on the list and select “Auto-Detect Printers”. Once you start an Auto-Detect, the dialog box shown below will appear.




Auto-Detect Dialog Box

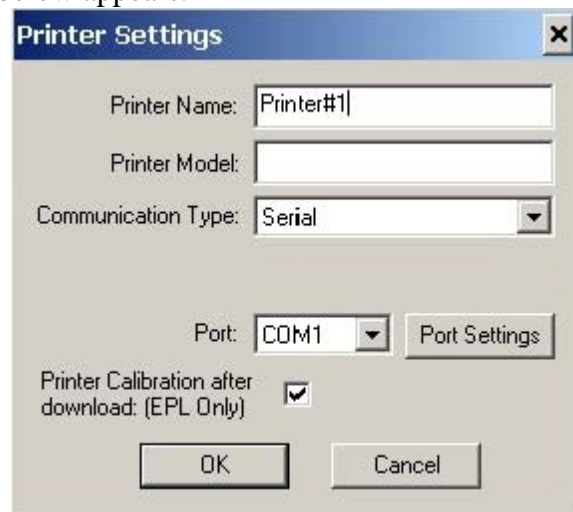
You can cancel Auto-Detection at any time by pressing the Cancel button.

Once the Auto-Detection is complete, the printers detected will be added to the printer list.

NOTE: Ethernet connected printers are detected by the application broadcasting a UDP packet out onto the network. UDP port number 4201 is used for the discovery process. Some networks filter out UDP packets. This means that it may not be possible to detect all printers on your network. See your network administrator for more information. If you are not able to Auto-Detect your network printers, follow the manual add instructions in the next section.

Manual Add Printers

To manually add a printer to the list press the “Add Printer” toolbar button  choose the menu options “Printer→Add...” or right click on the list and select “Add Printer...”. When you add a printer the dialog shown below appears.

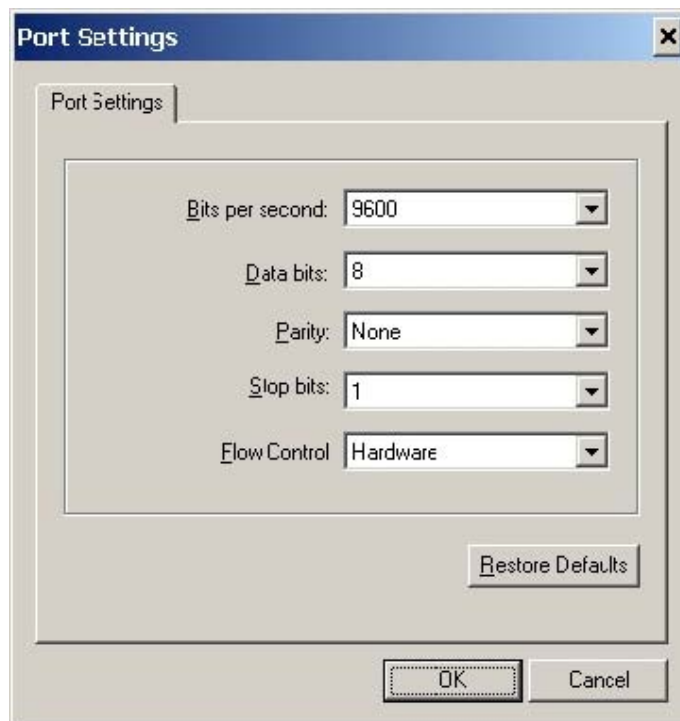


Configuring a Serial Printer

Enter the Printer Name, Model, Communication Type, etc for the printer you wish to add.

Adding a Serial Printer

The available Serial ports will be shown in the Port combo box. Select the serial port to which the printer is connected. The computer's serial port settings must match the printer's serial port settings. The printer's serial port settings can be viewed by performing the one-flash sequence (see the user's manual for details) and reading the Dump Mode status labels serial configuration data (example: 9600,N,8,1 which matches the Port Setting displayed below). Configure the port settings by pressing the Port Settings button. The dialog shown below will appear.



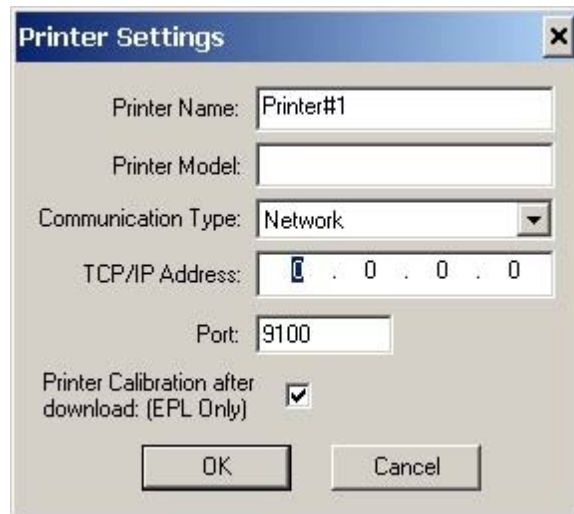
Serial Port Settings

Adding a Parallel Printer

To add a parallel printer, select the Parallel Communication Type. The available parallel ports will be shown in the Port combo box. Select the port to which the printer is connected.

Adding a Network Printer

To add an Ethernet printer, select the Network Communication Type. Then enter the TCP/IP address and the communications port number for the printer. Use the one-flash sequence to print a status label.




Configuring a Network Printer

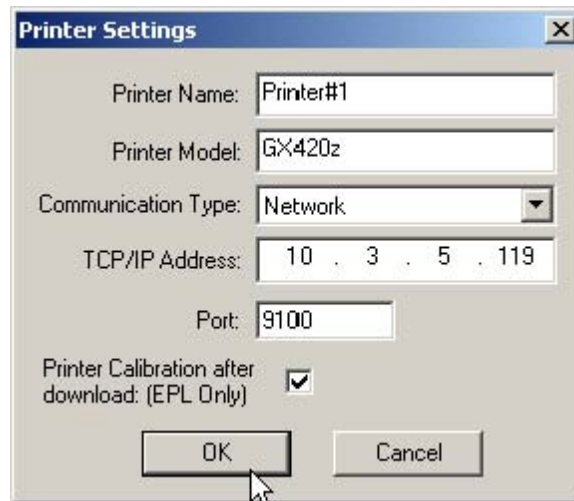
Adding a USB Printer

USB printers can only be added by using Auto-Detect. All printers connected via the USB interface will have the list designation of USB. The program can support as many USB printers as the computer can support. The maximum number of USB devices that can be supported by the computer (typically) would be 255.

Modify Discovered Printers in the List

To change printer settings for a printer that is already in the list, select the printer and press the “Modify Printer” toolbar button , select the “Printer→Modify...” menu option, or right click on the printer in the list and select “Modify Printer...”. The Printer Settings dialog will appear as shown in Figure 3. If the printer you are modifying is a USB printer the printer settings dialog will resemble the dialog box shown below.

NOTE: When “Print Configuration Label after Download” is selected, the printer will perform sensor calibration then print a configuration label. This ensures that the media sensor is calibrated correctly as a firmware download will overwrite any existing values.





Delete Discovered Printers from the List

To delete printers from the list, press the “Delete Printer(s)” toolbar button , select the “Printer→Delete” menu option, or right click on the printer(s) to be deleted and select “Delete Printer(s)”.

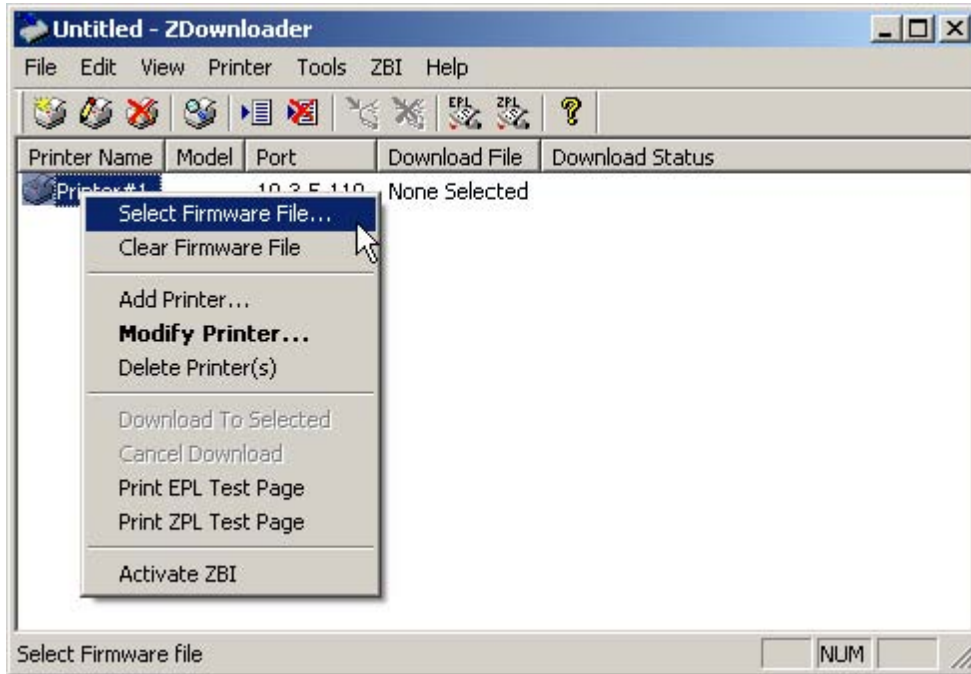
Print the Test Page on a Discovered Printer

Below are the three ways in which a Test Page can be printed;

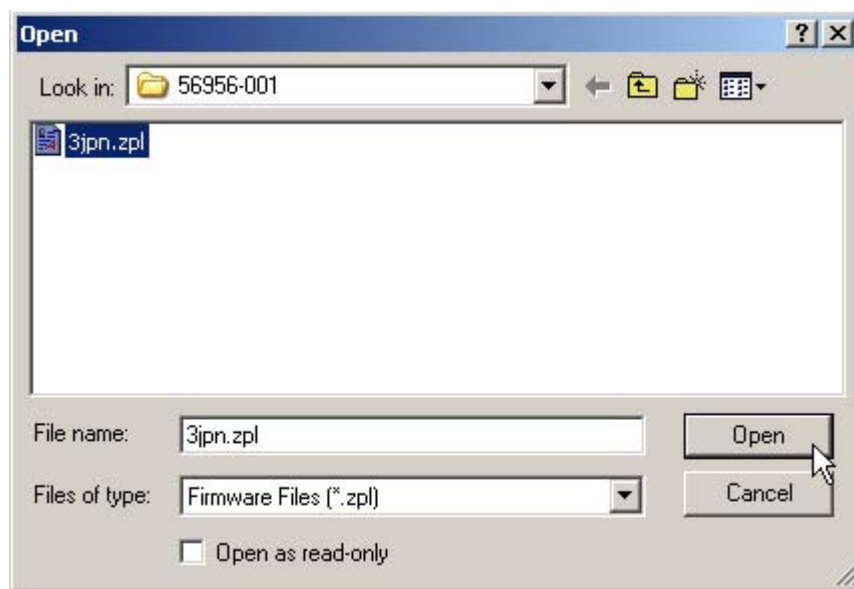
- Select the Printer(s) desired and press the “Print Test Page” toolbar button  or .
- Select the menu option “Printer→Print EPL Test Page” or “Printer→Print ZPL Test Page.”
- Right click on the selected printers and select “Print EPL Test Page”, or “Print ZPL Test Page”.

Downloading Fonts to a Printer:

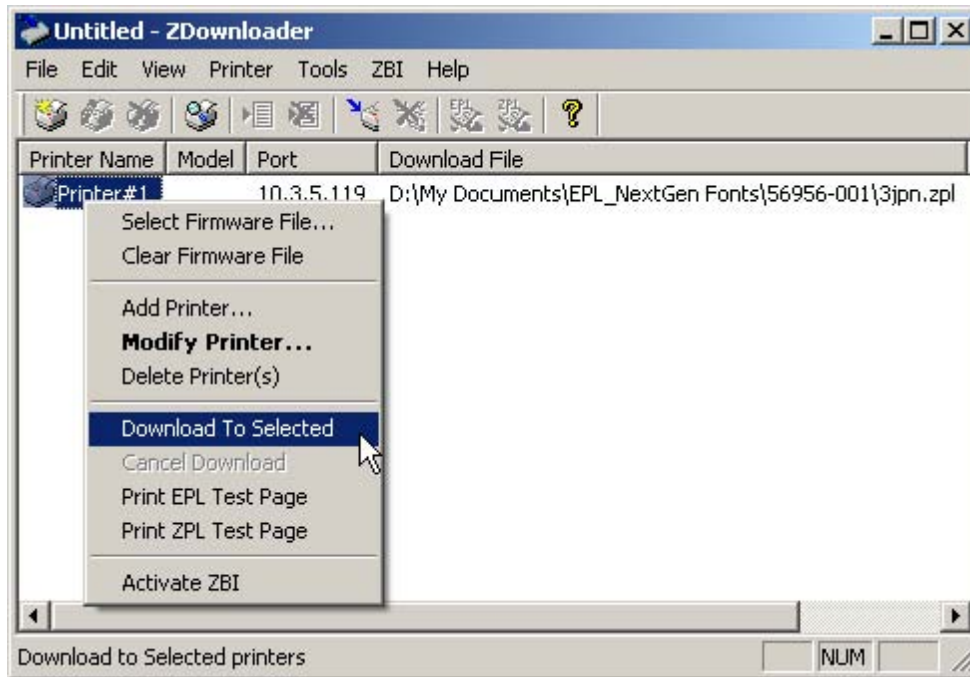
After discovering printers, select the printer onto which the font will be loaded. Then right click and select “Select Firmware File”. In this case, the font files would be considered a firmware file.



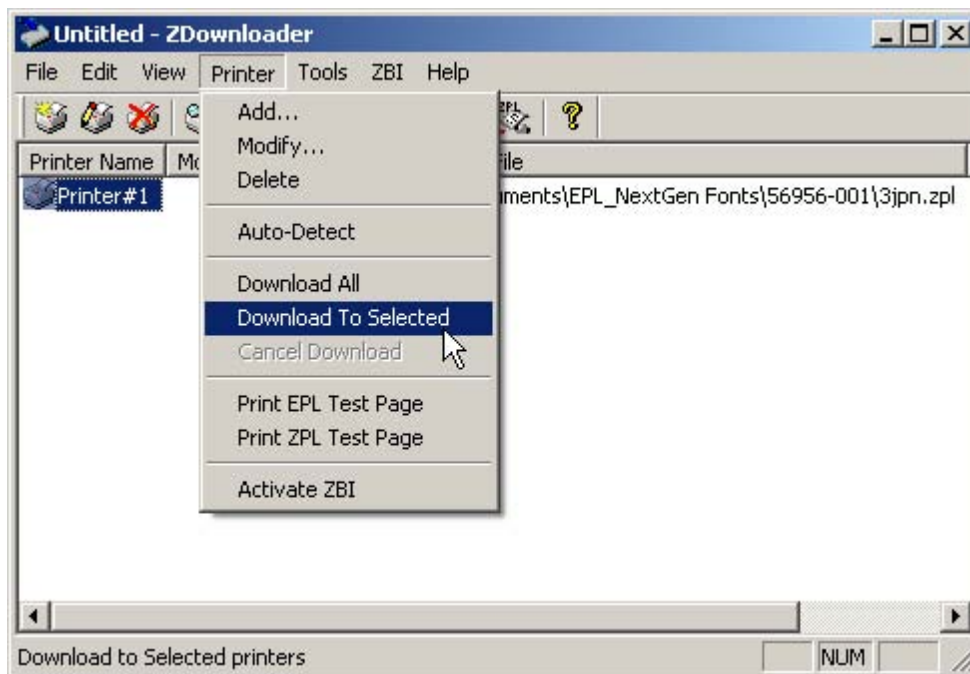
Browse for the file and click “Open”.



After the file has been selected, you can either right click on the printer or click on the “Printer” menu item, and select “Download to Selected”.

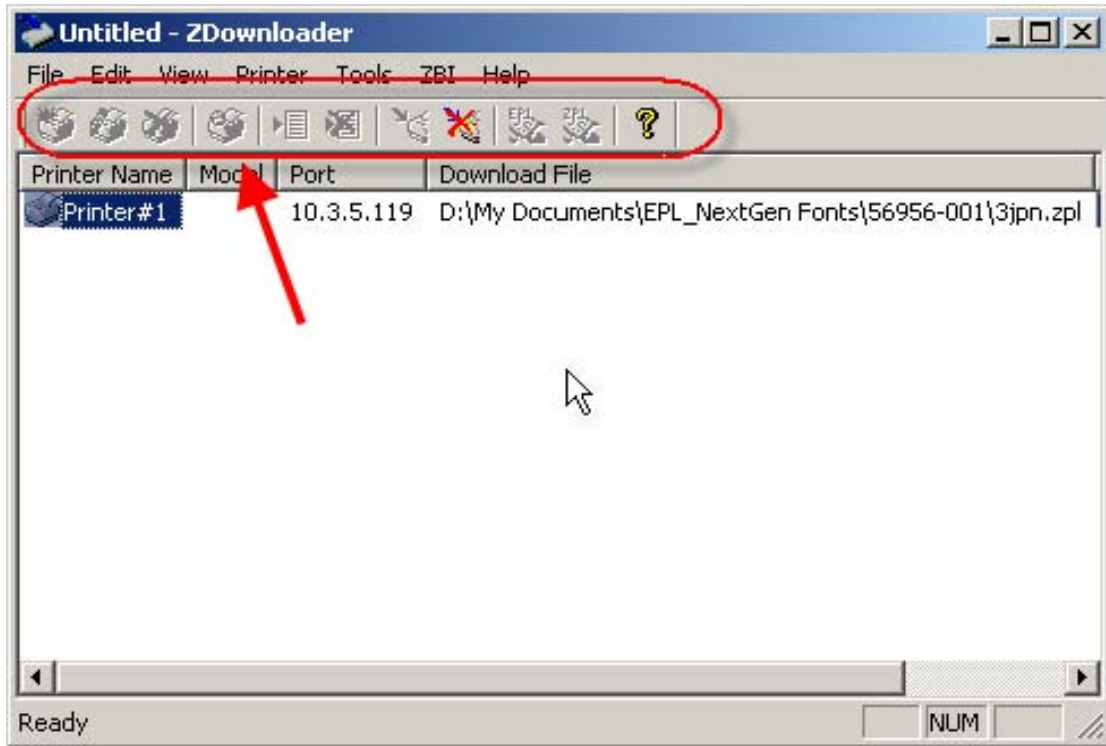


Right Click on desired printer



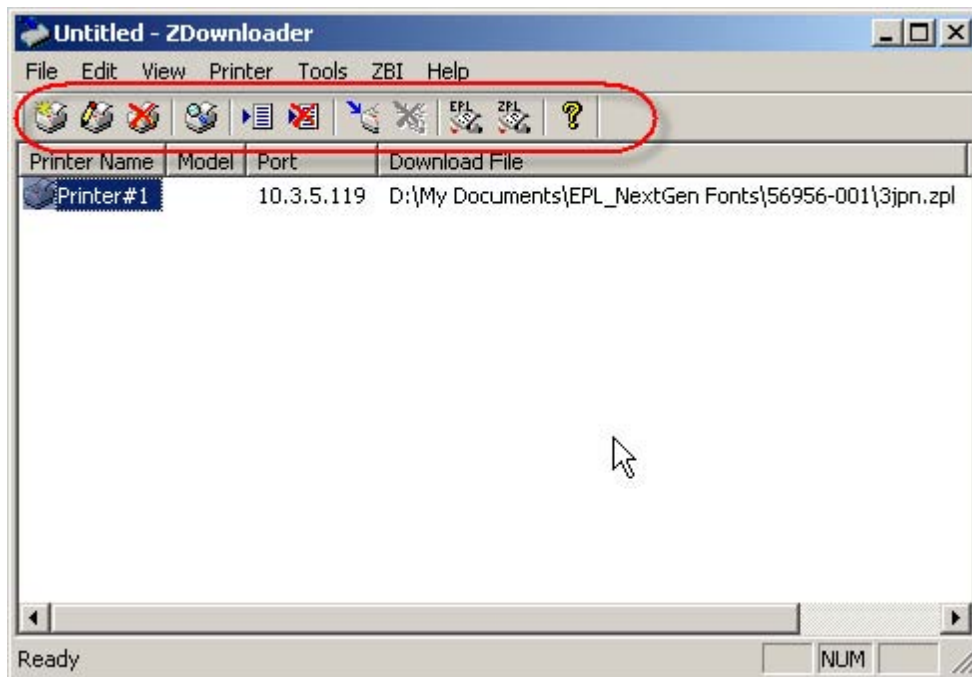
From Printer menu, with printer selected.

While the file is being downloaded to the printer, all the buttons except for the “cancel download” and “help” buttons will be disabled.

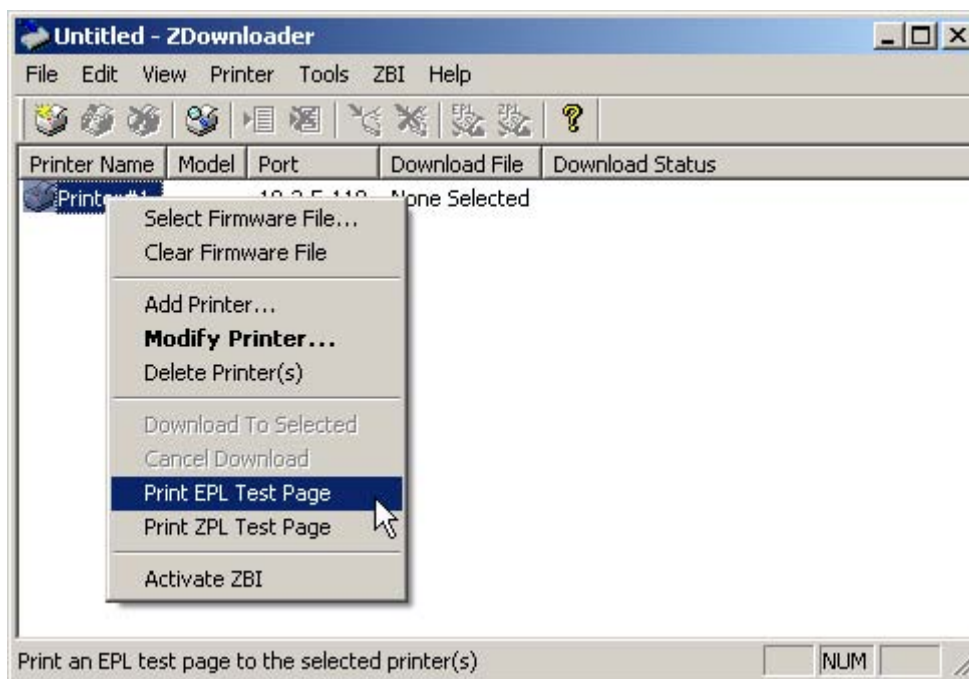


When the file download is complete, the buttons will be re-enabled and the printer will feed 1 to 4 blank labels.

NOTE: There is no download confirmation message when the file is finished downloading.



To confirm that the font has been successfully loaded, print an EPL test page by highlighting the desired printer, right clicking on the printer and selecting “Print EPL Test Page” from the menu.



This is what the first line of the EPL configuration label looks like when no Asian font is loaded:

ZTC GX420d V56.15.5P03
S/N: 123456

This is what the first line of the EPL configuration label looks like when the Japanese font has been loaded:

ZTC GX420d JPN V56.15.5P03
S/N: 123456

Other language/font abbreviations:

Abbreviation Language

KOR Korean
CHS Simplified Chinese
CHT Traditional Chinese
CHN Chinese