



ZQ110

Mobile Printer Net Configuration Tool

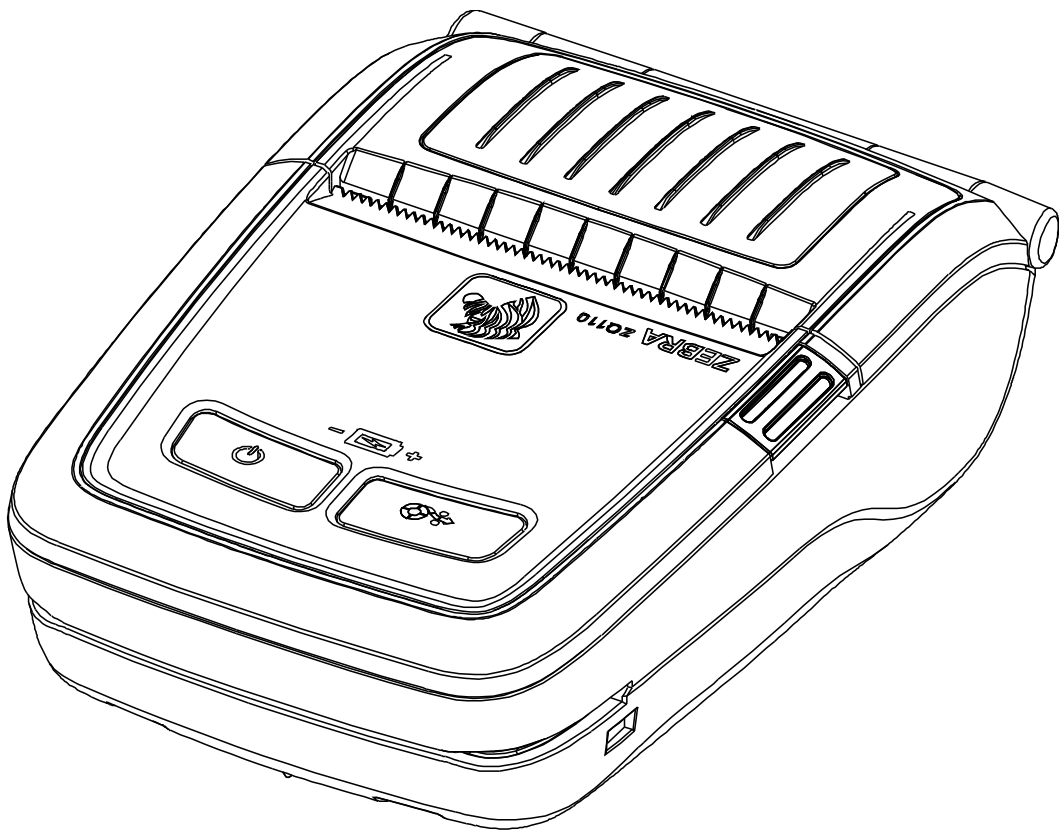


Table of Contents

1. Manual Information	6
2. Operating System (OS) Environment	6
3. Software Installation and Deletion	7
3-1 Installation	7
3-2 Deletion	9
4. Configuration	10
4-1 USB Configuration	10
4-2 WLAN Configuration	15
4-3 Accessing Printer Information in a Web Browser	19

■ Proprietary Statements

This manual contains proprietary information for Zebra Technologies Corporation. It is intended solely for the information and use of parties operating and maintaining the equipment described herein. Such proprietary information may not be used, reproduced, or disclosed to any other parties for any other purpose without the expressed written permission of Zebra Technologies Corporation.

Product Improvements

Since continuous product improvement is a policy of Zebra Technologies Corporation, all specifications and signs are subject to change without notice.

FCC Compliance Statement

NOTE: This equipment has been tested and found to comply with the limits of a Class B digital device, pursuant to Part 15 of the FCC Rules. These limits are designed to provide reasonable protection against harmful interference in a residential installation. This equipment generates, uses and can radiate radio frequency energy and, if not installed and used in accordance with the instructions, may cause harmful interference with radio communications. However, there is no guarantee that interference will not occur in a particular installation. If this equipment does cause harmful interference to radio or television reception, which can be determined by turning the equipment off and on, the user is encouraged to try to correct the interference by one or more of the following measures:

- Reorient or relocate the receiving antenna.
- Increase the separation between the equipment and the receiver.
- Connect the equipment to an outlet or circuit different from that to which the receiver is connected.
- Consult the dealer or an experienced radio/TV technician for help.

WARNING: Exposure to Radio Frequency radiation. To conform to FCC RF exposure requirements this device shall be used in accordance with the operating conditions and instructions listed in this manual.

NOTE: This unit was tested with shielded cables on the peripheral devices. Shielded cables must be used with the unit to ensure compliance.

Changes or modifications to this unit not expressly approved by Zebra Technologies Corporation could void the user's authority to operate this equipment.

Canadian Compliance Statement

This Class B digital apparatus complies with Canadian ICES-003.

Cet appareil numérique de la classe B est conforme à la norme NMB-003 du Canada.

“IC:” before the equipment certification number signifies that the Industry Canada technical specifications were met. It does not guarantee that the certified product will operate to the user’s satisfaction.

Liability Disclaimer

Inasmuch as every effort has been made to supply accurate information in this manual, Zebra Technologies Corporation is not liable for any erroneous information or omissions. Zebra Technologies Corporation reserves the right to correct any such errors and disclaims liability resulting therefrom.

No Liability for Consequential Damage

In no event shall Zebra Technologies Corporation or anyone else involved in the creation, production, or delivery of the accompanying product (including hardware and software) be liable for any damages whatsoever (including, without limitation, damages for loss of business profits, business interruption, loss of business information, or other pecuniary loss) arising out of the use of or the results of use of or inability to use such product, even if Zebra Technologies Corporation has been advised of the possibility of such damages. Because some states do not allow the exclusion of liability for consequential or incidental damages, the above limitation may not apply to you.

Copyrights

The copyrights in this manual and the label print engine described therein are owned by Zebra Technologies Corporation. Unauthorized reproduction of this manual or the software in the label print engine may result in imprisonment of up to one year and fines of up to \$10,000 (17 U.S.C.506). Copyright violators may be subject to civil liability.

This product may contain ZPL®, ZPL II®, and ZebraLink™ programs; Element Energy Equalizer® Circuit; E3®; and AGFA fonts. Software © ZIH Corp. All rights reserved worldwide.

ZebraLink and all product names and numbers are trademarks, and Zebra, the Zebra logo, ZPL, ZPL II, Element Energy Equalizer Circuit, and E3 Circuit are registered trademarks of ZIH Corp. All rights reserved worldwide.

Monotype®, Intellifont® and UFST® are trademarks of Monotype Imaging, Inc. registered in the United States Patent and Trademark Office and may be registered in certain jurisdictions.

Andy™, CG Palacio™, CG Century Schoolbook™, CG Triumvirate™, CG Times™, Monotype Kai™, Monotype Mincho™ and Monotype Sung™ are trademarks of Monotype Imaging, Inc. and may be registered in some jurisdictions.

HY Gothic Hangul™ is a trademark of Hanyang Systems, Inc.

Angsana™ is a trademark of Unity Progress Company (UPC) Limited.

Andale®, Arial®, Book Antiqua®, Corsiva®, Gill Sans®, Sorts® and Times New Roman® are trademarks of The Monotype Corporation registered in the United States Patent and Trademark Office and may be registered in certain jurisdictions.

Century Gothic™, Bookman Old Style™ and Century Schoolbook™ are trademarks of The Monotype Corporation and may be registered in certain jurisdictions.

HGPGothicB™ is a trademark of the Ricoh company, Ltd. and may be registered in some jurisdictions.

Univers™ is a trademark of Heidelberger Druckmaschinen AG, which may be registered in certain jurisdictions, exclusively licensed through Linotype Library GmbH, a wholly owned subsidiary of Heidelberger Druckmaschinen AG.

Futura® is a trademark of Bauer Types SA registered in the United States Patent and Trademark Office and may be registered in some jurisdictions.

TrueType® is a trademark of Apple Computer, Inc. registered in the United States Patent and Trademark Office and may be registered in certain jurisdictions.

All other product names are the property of their respective owners.

All other brand names, product names, or trademarks belong to their respective holders.

©2014 ZIH Corp.

1. Manual Information

This Net Configuration Tool Manual provides information on the utility program used to set printer operation conditions.

2. Operating System (OS) Environment

The following Microsoft® Windows® operating systems are supported for usage.

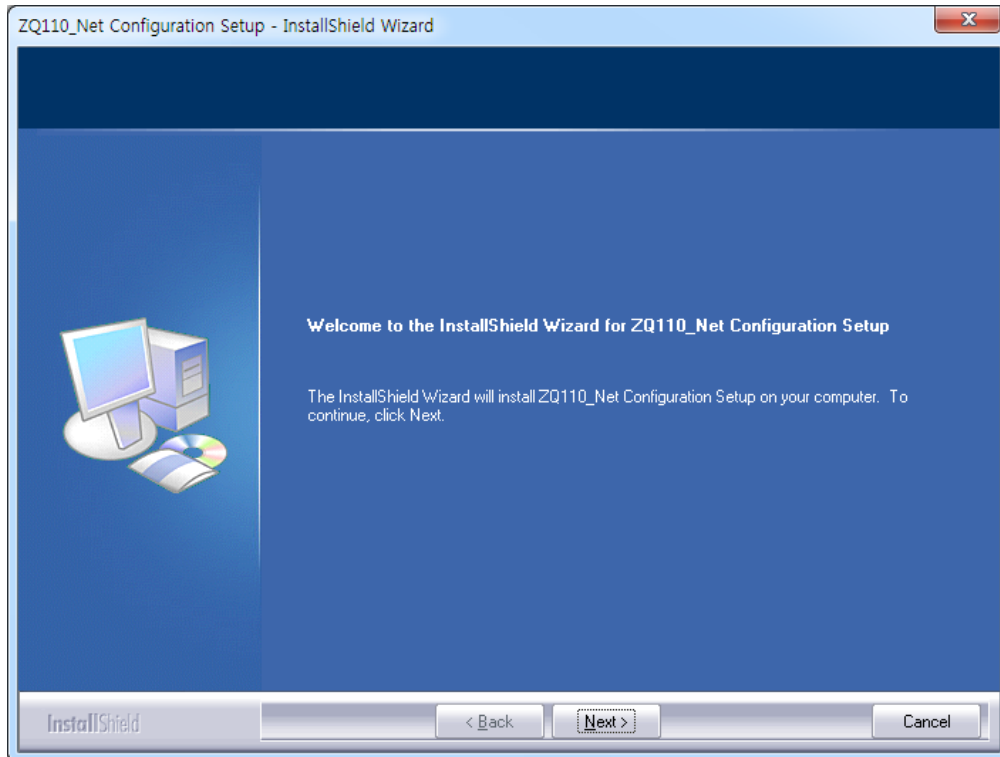
- Microsoft Windows XP (32bit/64bit)
- Microsoft Windows 2003 Server (32bit/64bit)
- Microsoft Windows Embedded For Point Of Service
- Microsoft Windows VISTA (32bit/64bit)
- Microsoft Windows 2008 Server (32bit/64bit)
- Microsoft Windows 7 (32bit/64bit)
- Microsoft Windows 8 (32bit/64bit)

3. Software Installation and Deletion

3-1 Installation

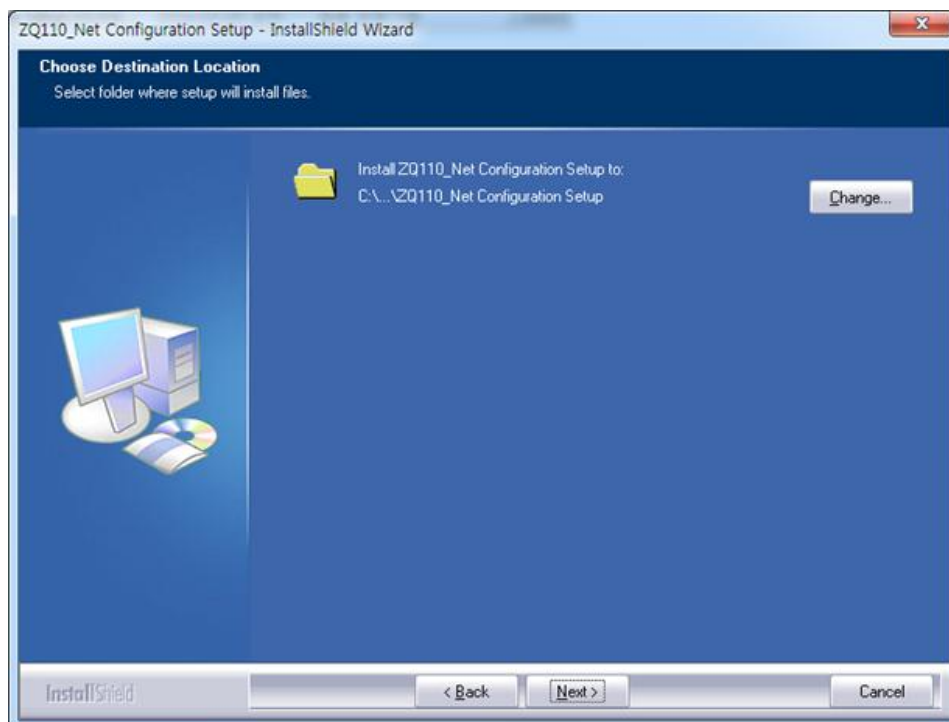
To install the ZQ110 Net Configuration Tool:

- 1) From zebra.com, download the ZQ110_Net Configuration Setup_V1.x.x.exe installation file to your desktop. Double-click the file to begin installation.

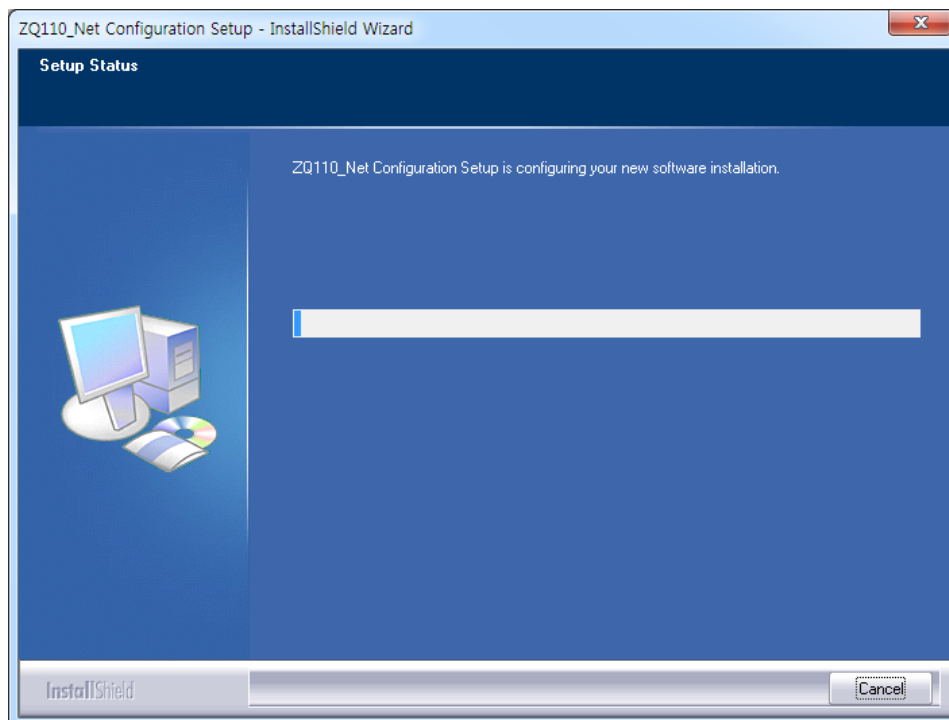


- 2) On the installation Welcome screen, click **Next**.
The Choose Destination Location window appears.

- 3) Click **Next** to install the configuration tool in the following location:
C:\Program Files\Zebra Technologies\ZQ110_Net Configuration Setup



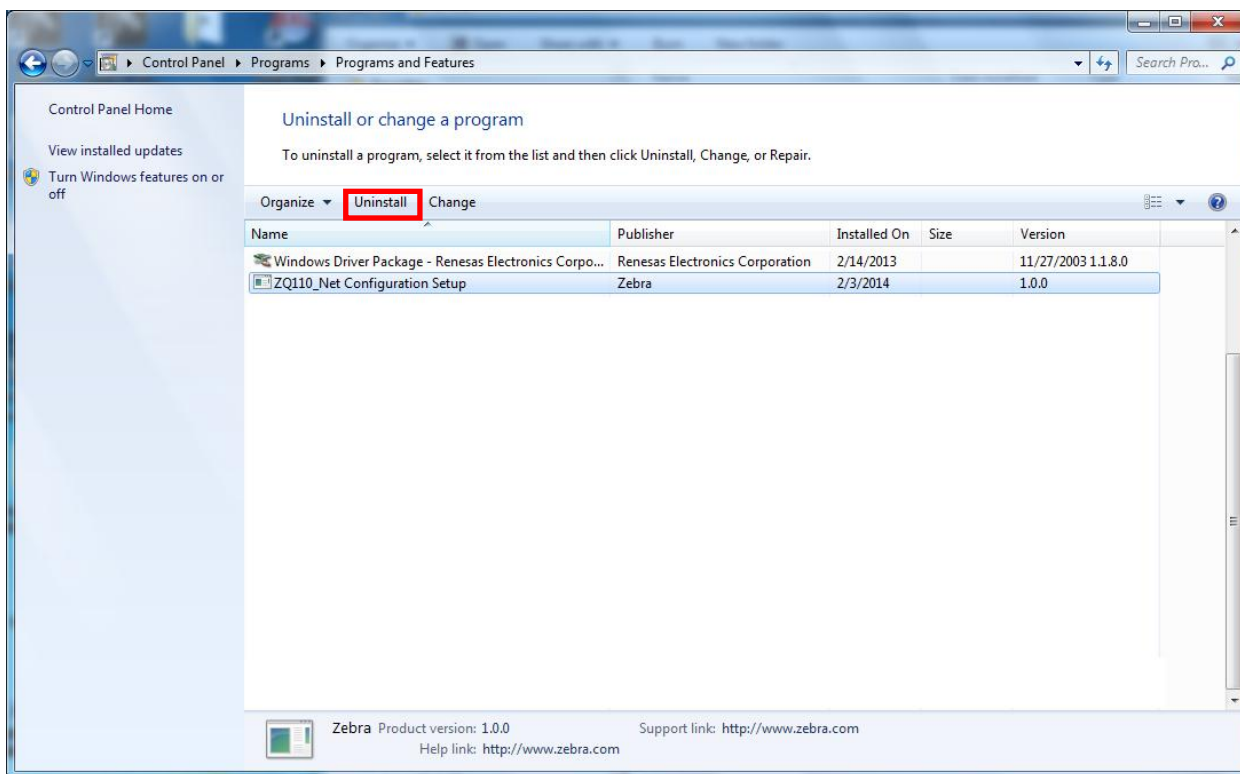
- 4) Click **Finish** to complete the installation.



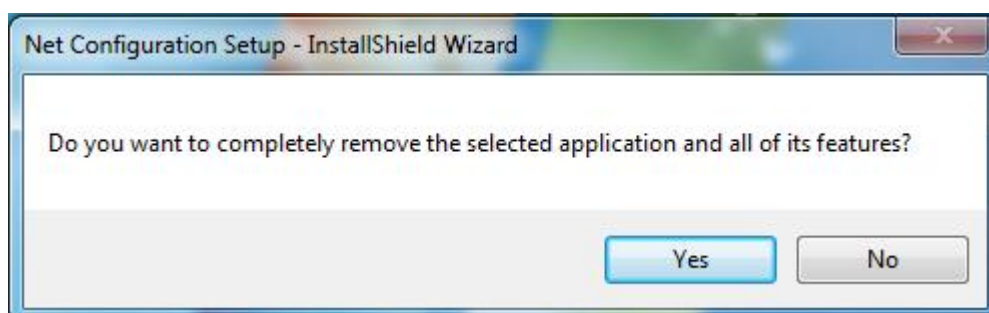
3-2 Deletion

To uninstall the ZQ110 Net Configuration Tool and delete it from your computer:

- 1) Access the Windows Control Panel, click **Start > Control Panel**, select **Programs and Features**. Select **ZQ110_Net Configuration Setup** and then click **Uninstall**.



- 2) Click **Yes** to remove the application.

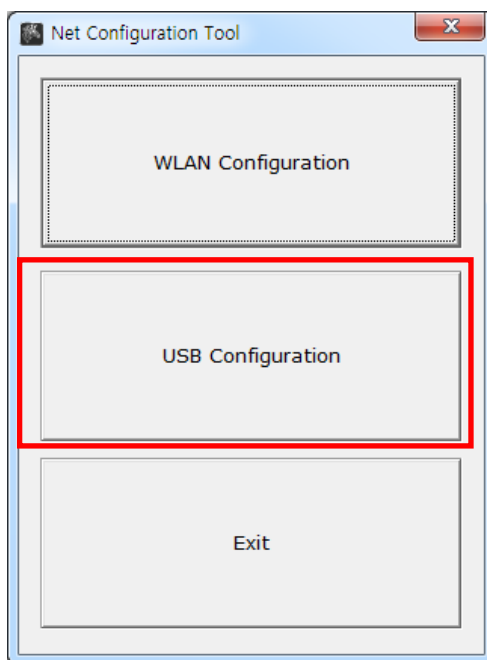


4. Configuration

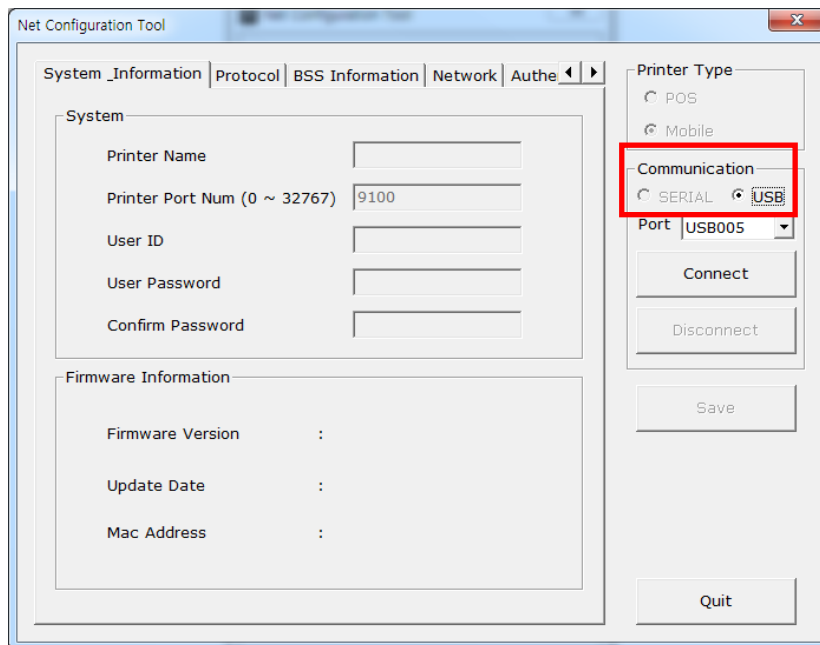
Launch the ZQ110 Net Configuration Tool. **Click Start > All Programs > Zebra > Net Configuration Tool.**

4-1 USB Configuration

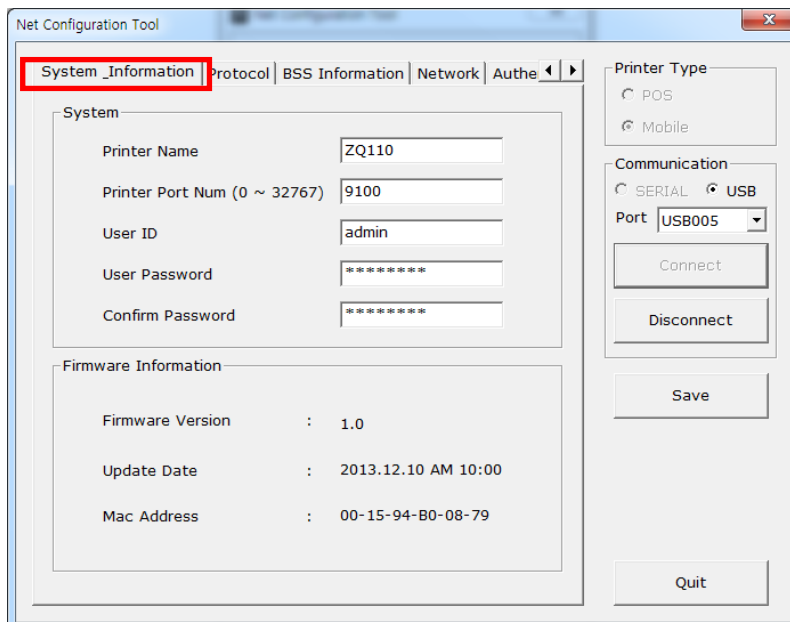
Connect the printer to a Windows PC using a USB cable. In the Net Configuration Tool, click **USB Configuration**.



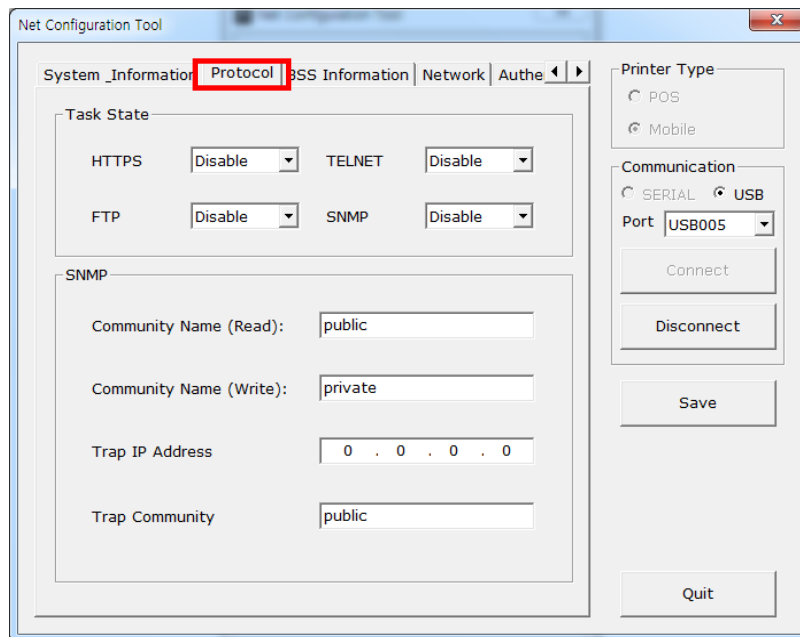
- 1) On the **System Information** tab, under **Communication**, select **USB**, and click **Connect**. When the printer is properly connected, the configuration of the printer will be listed.



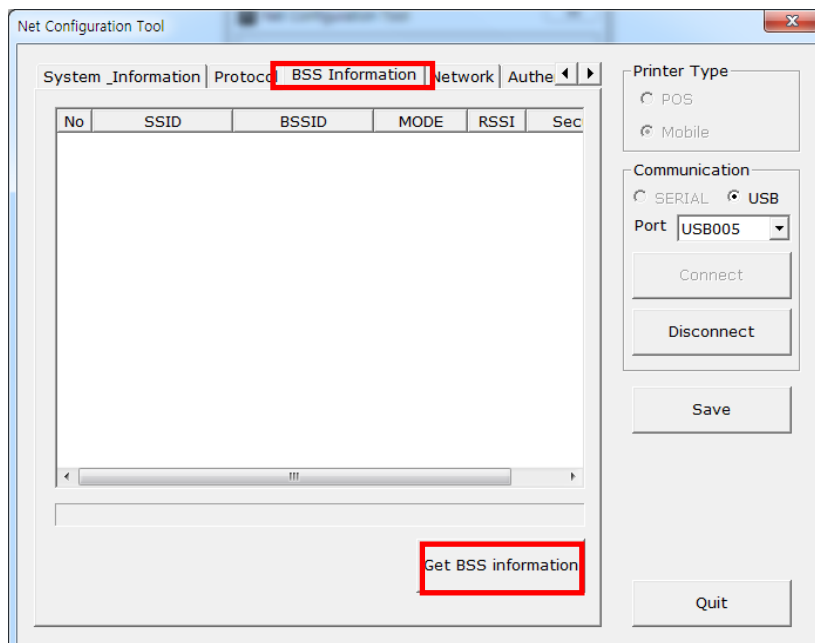
On the **System Information** tab, enter the Printer Name, Printer Port, User ID and User Password and Confirm Password.



- 2) On the **Protocol** tab, select **Enable** or **Disable** HTTPS, TELNET, FTP and SNMP protocols. Enter Simple Network Management Protocol (SNMP) information to enable SNMP.

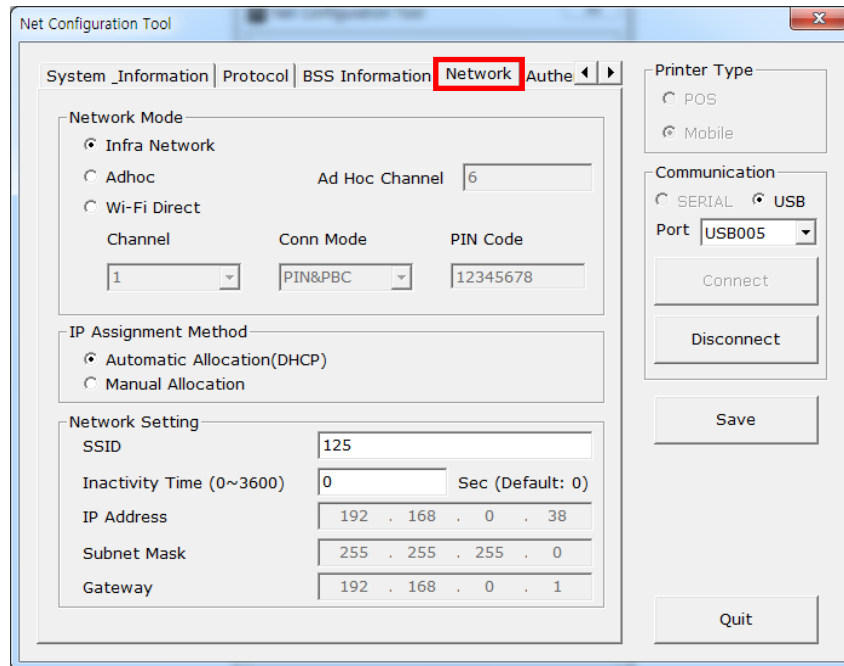


- 3) On the **BSS Information** tab, click **Get BSS information** The Access Points (AP) in close proximity to the printer will be listed.

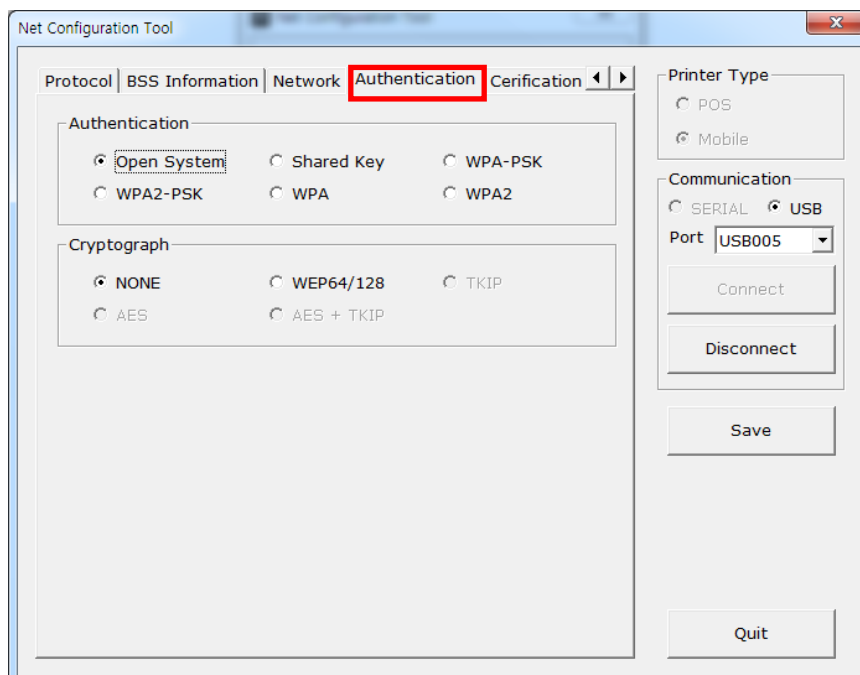


4) On the **Network** tab, select **Network Mode**: Within this tab, you can set Infrastructure/Adhoc, SSID, IP Subnet mask and Gateway parameters.

Under **Network Setting**, entering **Inactivity Time** disconnects the printer from the host device when data transfer is inactive. If multiple host devices are used with one printer, **Inactivity Time** is recommended.

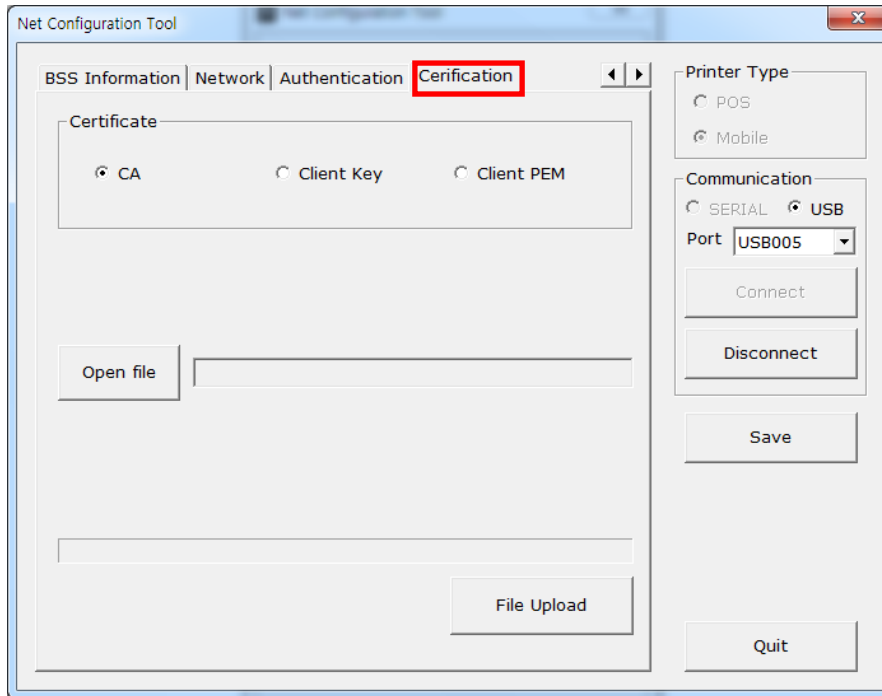


5) On the Authentication tab, select the Authentication Type, and select the Cryptograph type. Note: If you are in infrastructure mode, you need to set Cryptograph with Access Point. If you are in Adhoc mode, you need to set Cryptograph to host device.



6) On the Certification tab, the printer saves the certificate file for EAP-TLS certification.

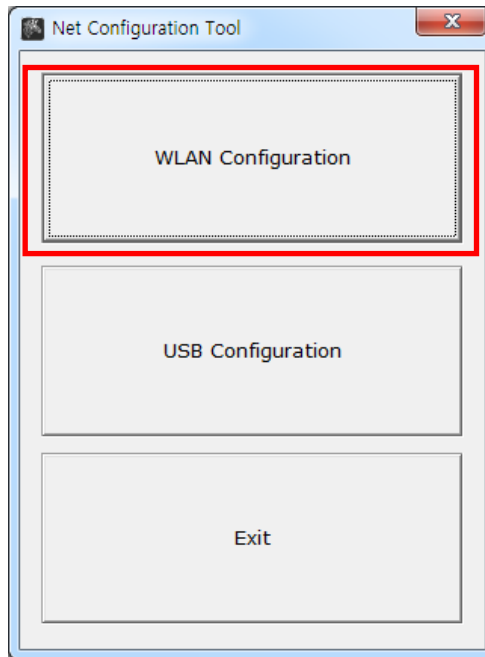
When you use Transport Layer Security (TLS) certification, upload the (Certificate Authority) CA, Client Key (Key/PEM) and Client certificate (PEM) files by clicking **Open File**. Select the file to upload and click **File Upload**. The recommended key size for the certificate is 512 bits. If the size of certificate is more than 512, it will take some time for EAP certification.



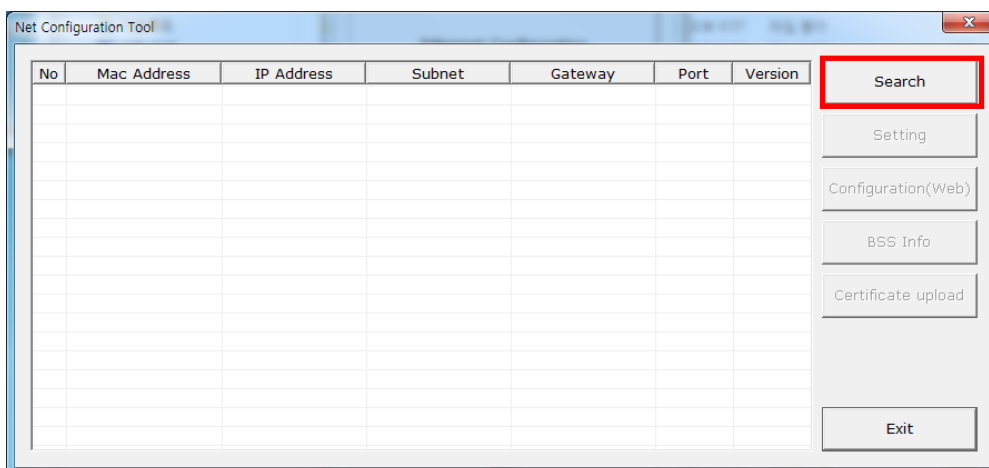
4-2 WLAN Configuration

NOTE – To configure WLAN settings and connect your printer to a wireless network, your device and your printer must be on the same network. Your printer network mode, AP, SSID, encryption and authentication settings must match the settings of the wireless network.

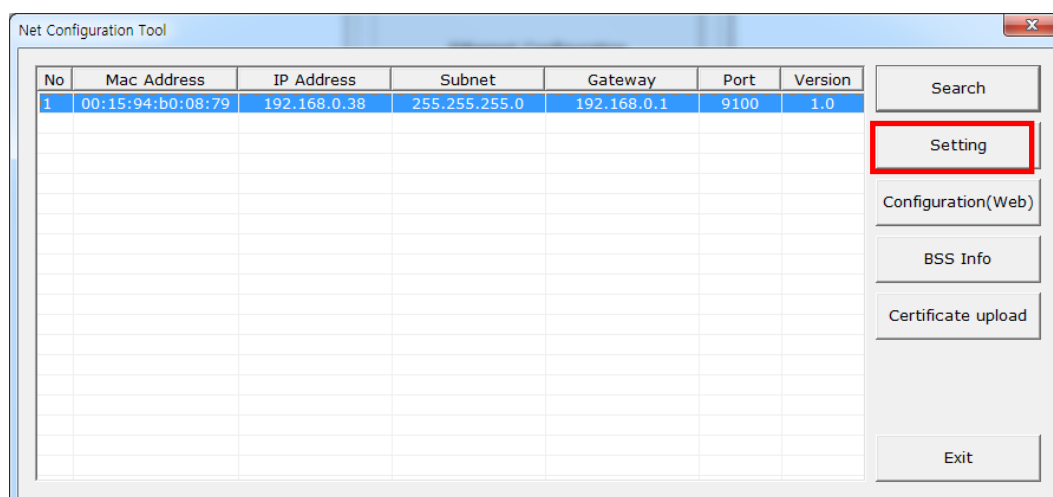
1) Launch the Net Configuration Tool. Click **WLAN Configuration**.



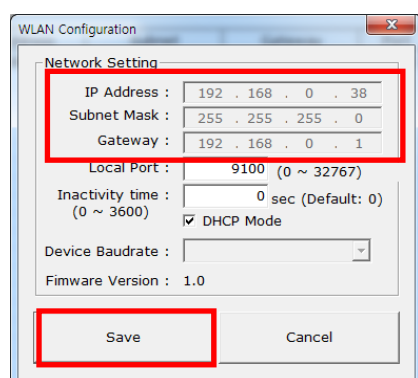
2) Press **Search**. The printer(s) connected to the network will be shown in the list.



3) On the Search screen, select your printer to highlight it in the list and click **Setting**.

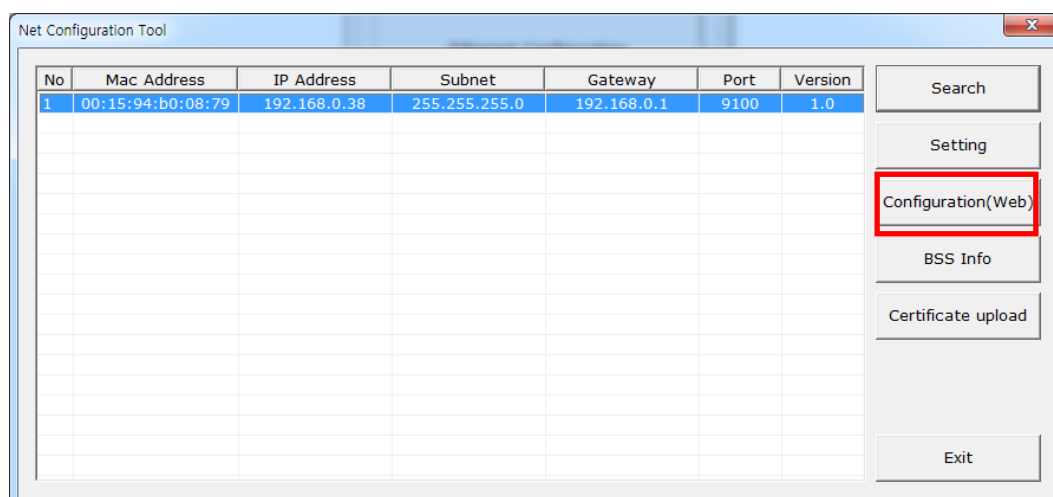


4) On the **Network Setting** screen, Enter the IP Address, Subnet Mask, and Gateway of the wireless network you want to connect to. Click **Save**.



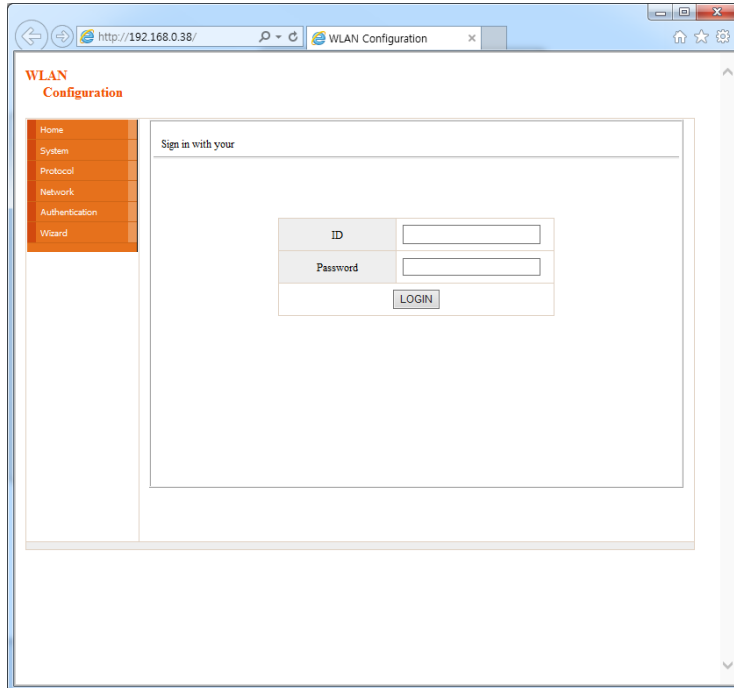
Note: Device Baudrate is not necessary for the ZQ110 printer.

5) On the **Search** screen, select the printer from the list. Click **Configuration(Web)**. A login screen will appear in a web browser window.

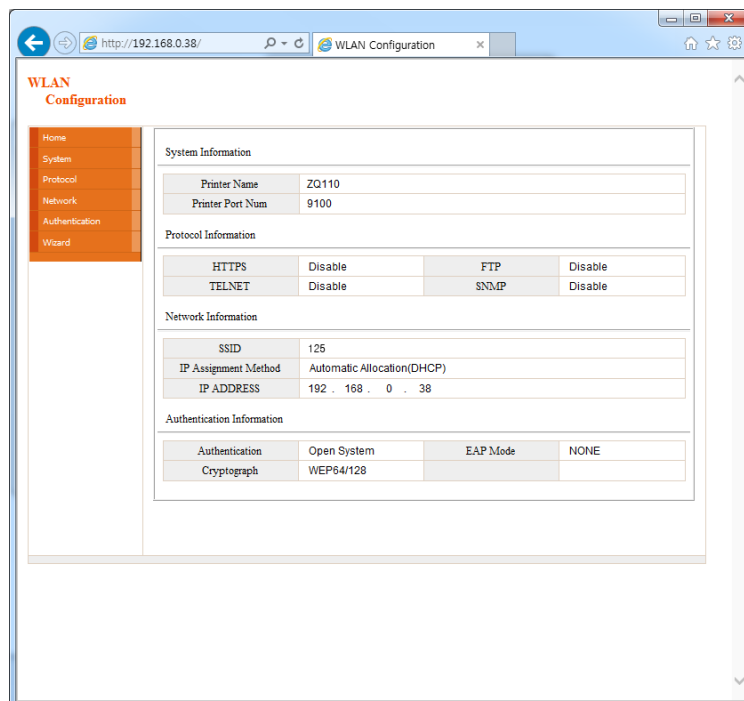


6) On the login screen, enter the ID and Password for your printer. Click **LOGIN**. The factory default login settings are as follows:

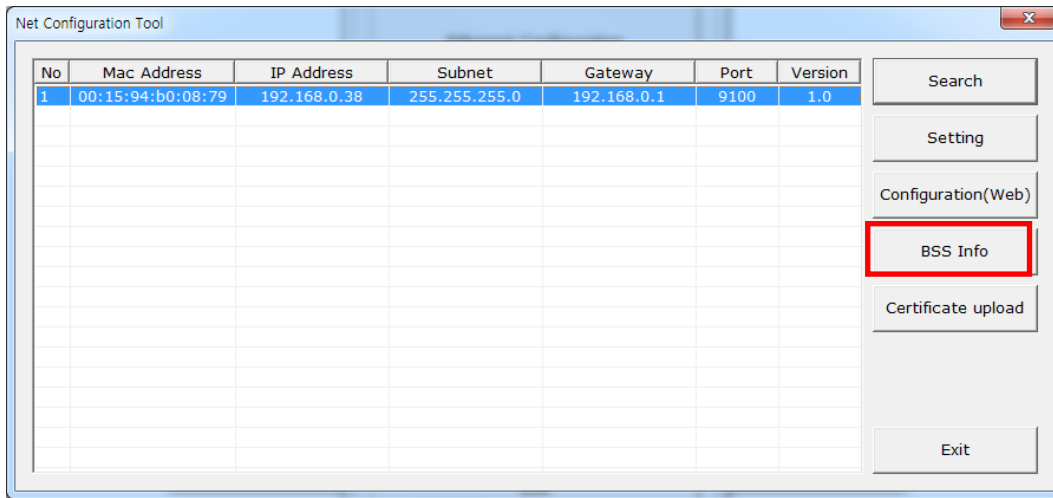
- **ID:** admin
- **Password:** password



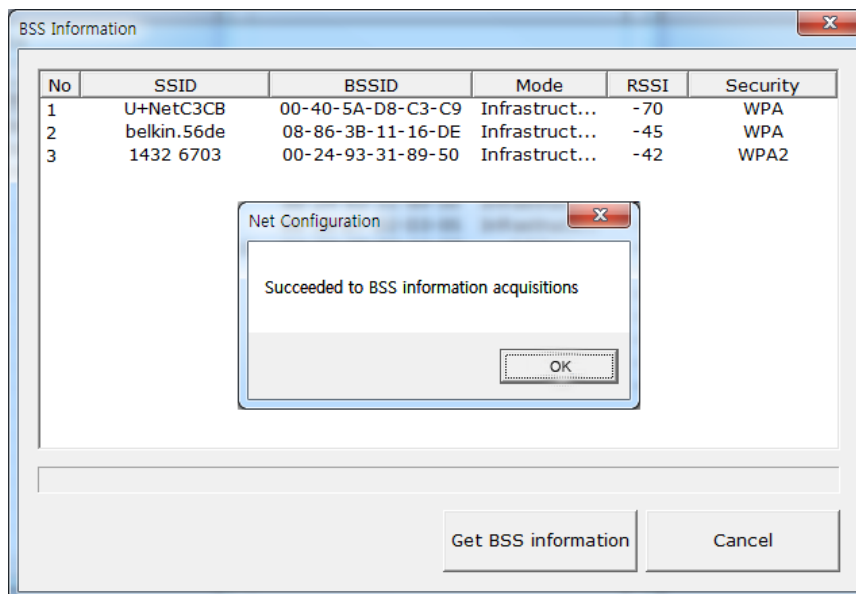
After you click **LOGIN**, the printer information appears in a web browser window. The WLAN configuration settings can be changed on this screen or by using the Wizard option.



7) To perform a search of available networks, click **BSS Info**.



Available networks along with configuration information such as SSID, BSSID, Network Model and Encryption details are shown in the Search window.

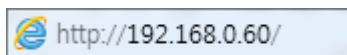


4-3 Accessing Printer Information in a Web Browser

The printer supports HTTP protocol as well as, the enhanced security, HTTPS and SSL protocols. When Secured Socket Layer (SSL) is enabled on the network web server, you must enter the IP address with “https” instead of “http” in the address bar to connect to the web-server.

(Automatic connection will be made when connecting with the configuration tool.)

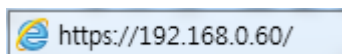
When SSL of the web-server is enabled,



* a security warning window will appear when you try to connect with https.

Accept the certificate provided by the printer in the warning window and continue.

When SSL of the web-server is disabled,



- 1) In the web browser's address bar, enter the IP address of the printer. Follow the steps above to access the printer's login screen and information screen in a web browser.

When the ID and Password are entered, the following window will appear indicating that WLAN configuration is possible.



www.zebra.com

Zebra Technologies International, LLC

475 Half Day Road
Suite 500, Lincolnshire
Illinois 60069 USA
Phone: +1.847.634.6700
Toll-Free: +1.800.230.9494
Fax: +1.847.913.8766

Zebra Technologies Europe Limited

Dukes Meadow
Millboard Road
Bourne End
Buckinghamshire, SL8 5XF, UK
Phone: +44 (0)1628 556000
Fax: +44 (0)1628 556001