



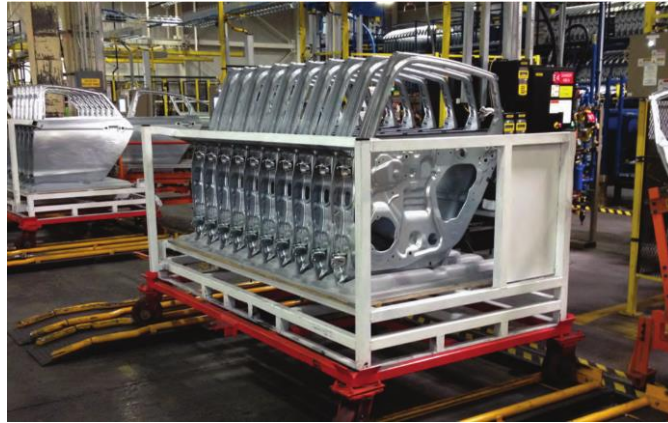
**ZEBRA**

# **ZEBRA RACK & CONTAINER TRACKING SOLUTION**

## Material Flow – Rack Tracking Module

What is Zebra's  
Rack and Container Management

?



## What is Zebra's Rack and Container Solution

- A module of the Material Flow Suite that allows customers to track the location, condition and load statuses of multiple rack or container fleets.
- The solution is designed to automate and simplify the processes involved with the operation, maintenance and disposition of re-useable rack and container fleets.

## Top 5 industry challenges

- Production delays – Due to non availability of racks and containers
- Container cycle times and handling costs – Non optimized use of containers
- Excess container inventory – Lack of visibility to safety stock levels
- Container shrinkage and attrition – Unaccounted program costs
- Damaged parts – Due to use of damaged or out of revision racks

# Zebra's Rack and Container Application

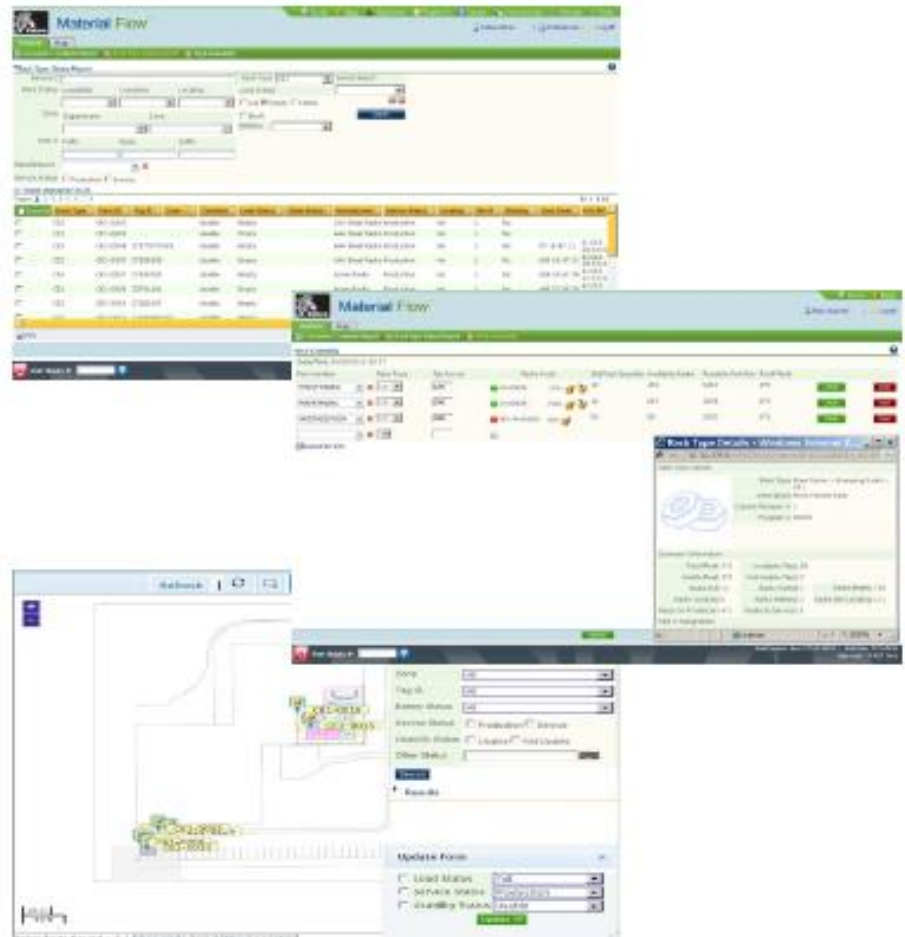
Rack Availability Report

Real Time Inventory Count

Automated Status Capture

Configurable and Flexible Rules

Touch Screen Map Support



## Solution Benefits

- Reduce unscheduled production changes
- Eliminate or dramatically reduce manual audits
- Reduce search time
- Ensure receipt of complete rack fleet
- Reduce downstream down-time
- Minimize part damage
- Reduce the need for expedited shipping of racks
- Improve management of rack and container fleets