



# Zebra® Virtual PrintWare™



SEE MORE. DO MORE.



## Customers praise our ZXP Series™ printers for speed and productivity. Make them even FASTER using Zebra Virtual PrintWare.

Managing and printing large and complex card-issuance applications has never been easier.

You need high-performance software to maximize the value from your high-performance printers. To meet increased business demands, you must be able to monitor, integrate, and print to multiple networked card printers. Zebra Virtual PrintWare software puts you in control of networked card printing.

Zebra Virtual PrintWare Suite allows you to monitor multiple printers remotely, giving you complete visibility and control over when, how, and where each card is printed.

Now you can scale and manage card printers and print by distributing job capacity across different locations to integrate easily and deploy distributed card-issuance projects.

Trying to simplify a complex, geographically distributed, card-printing application? Zebra Virtual PrintWare has you covered. Visually monitor printers, print-job status, status alerts, and manage large-volume jobs, all from one central console.

Need to integrate card printing from a legacy or existing application? Print to Virtual PrintWare via a Windows® driver, ZMotif™ SDK or through the new XML-based template printing capability.

## Zebra Virtual PrintWare Will Put You Back in Control by:

- **Saving Time and Money:** quickly integrate card printing from any application via template printing and XML data card print data
- **Reducing Operations & Maintenance Costs:** increased printer service levels via real-time printer monitoring and alert notifications
- **Lowering Overall Capital Costs:** pool your high-performance desktop printers for scalable high-volume, reliable printing

## Ideal for:

- **Multi-location Printing: Managing Card Printers and/or Print Jobs**
  - Retail membership or loyalty cards
  - Hospitality or theme-park passes
  - Access control/Secure IDs
  - Student IDs
- **High-volume Card Printing with scalable desktop card printers**
  - Service bureaus
  - Event-management badges

# SEE MORE... DO MORE

**Monitor** Configure and update networked printers, maximize performance, and view printer status, all from a single console.

**Print** Distribute print jobs across multiple printers as though they were one printer, increasing overall print performance, throughput and capacity.

**Integrate** Use a single ZMotif SDK for all Zebra® card printers. Integrate to any application with simple XML template printing—no SDK programming required.

## Zebra Virtual PrintWare products

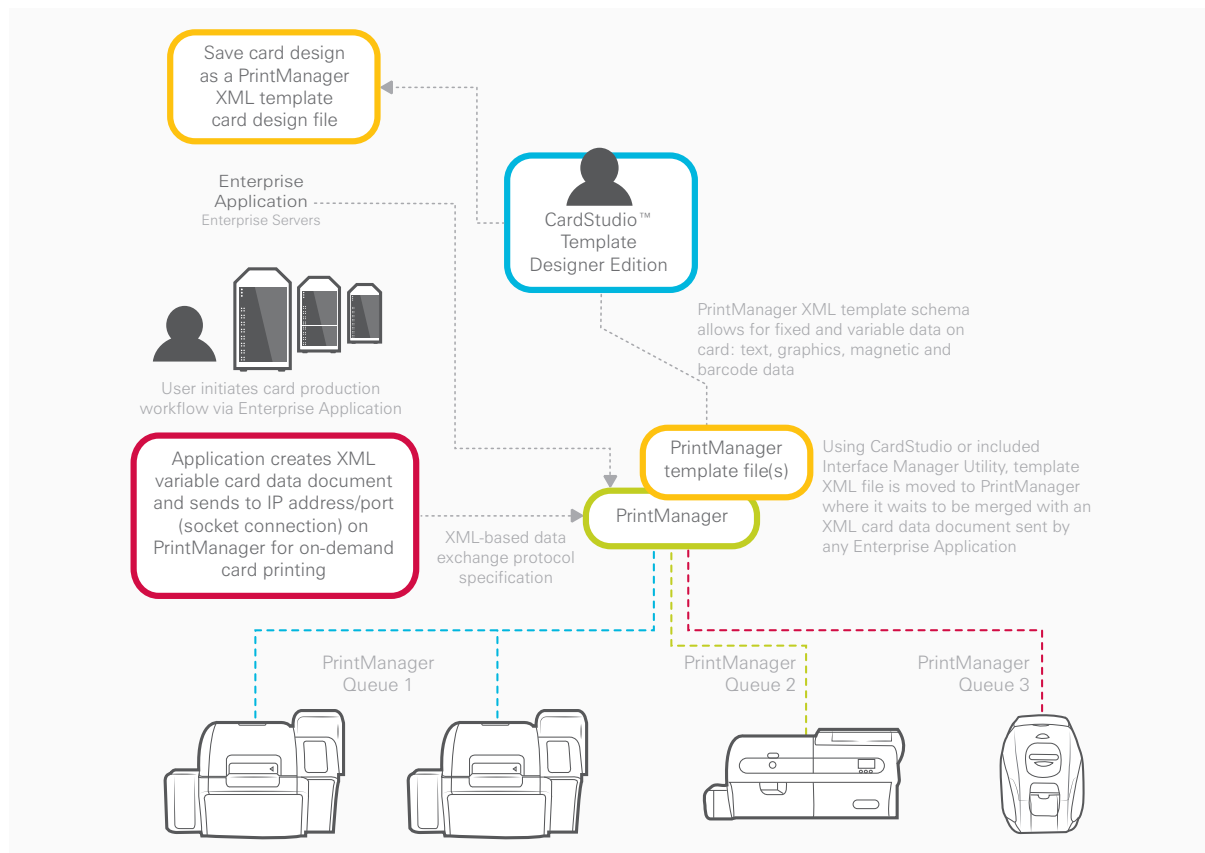
### 1 Zebra PrintMonitor™

- Manage new or existing deployments of multiple networked Zebra ZXP Series card printers.
- Visually monitor real-time health and status of multiple printers – all from a single console.
- Configure and update multiple networked printers all at once, maximizing performance and reliability.
- Consolidate individual printers into logical groups for easy management of large network configurations.

### 2 Zebra PrintManager™

- Easily integrate XML text data streams for card printing from any application, or operating system.
- Print to one or more networked card printers, pool printers for maximum performance and throughput.
- Manage and log print jobs to an integrated database.
- Includes Zebra Virtual PrintMonitor.

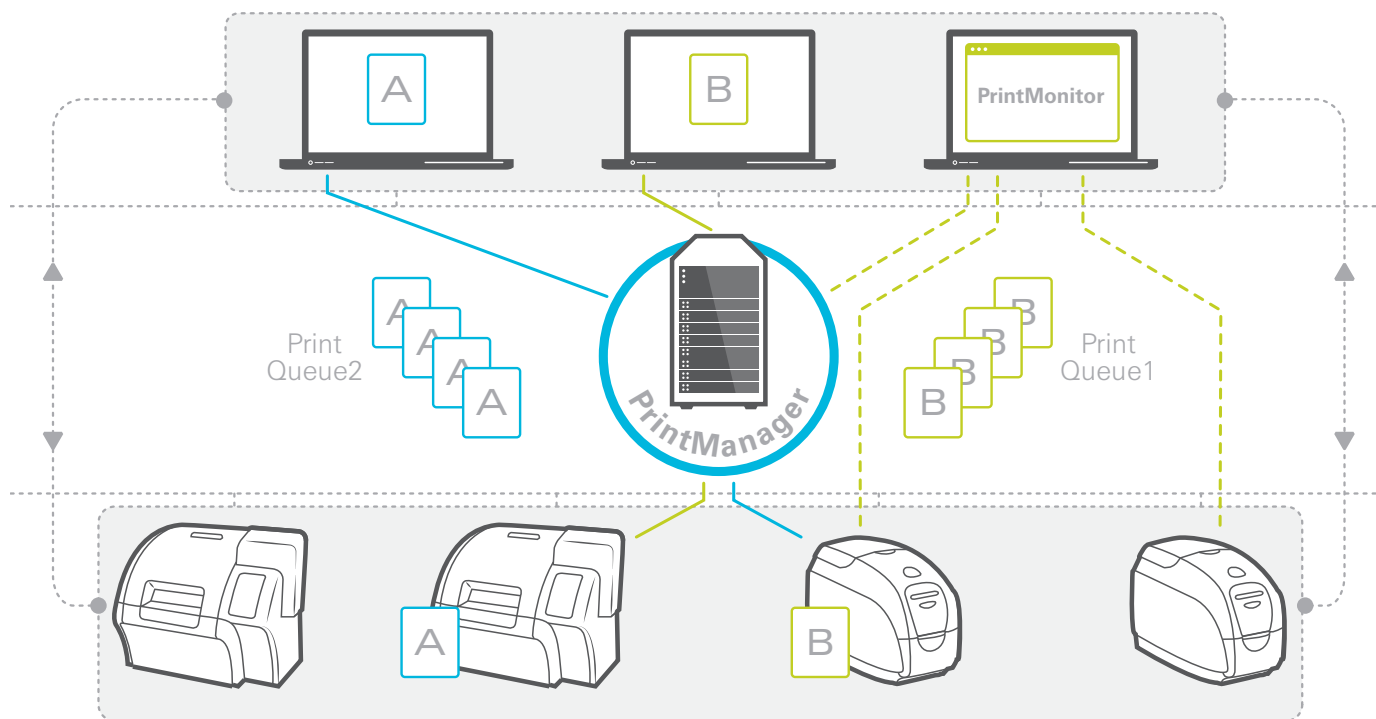
### Example of an end-to-end card printing solution using Zebra Virtual PrintWare with template printing



### Zebra Virtual PrintWare Software Suite

# Zebra Virtual PrintWare architecture

## A networked printer solution and example for PrintManager



## FEATURES AND BENEFITS

### ZEBRA PRINTMONITOR

FEATURE	BENEFIT
Manage multiple printers from a single centralized management console.	Reduced management cost and overhead; improved service levels.
Enable email/text message alerts for printer alarm status.	Immediate visibility into printer issues; faster response time for higher printer uptime and availability.
Automatic logging of all printer events.	Management database logs history of printer events across multiple printers for higher printer utilization and status reports.

### ZEBRA PRINTMANAGER

FEATURE	BENEFIT
Template printing: Use XML or text data stream from any application on any operating system.	Save development time by easy integration of card printing into third-party applications on any system, without SDK level programming.
Scalable high volume print throughput.	Add print capacity when and as you need it, saving time and money.
Automatic database logging of all print jobs.	Data visibility into overall print job performance and reliability.
Manage and print to multiple printers as one.	Scalable print job throughput at a fraction of the price of a large centralized card printer.
Use one ZMotif SDK for all ZXP Series printers.	Lower cost to develop applications and minimize training required.
Plus all of the features of PrintMonitor.	—

# OTHER FEATURES COMPARED

## SUPPORTED FEATURES<sup>1</sup>

FEATURES		PRINTMONITOR	PRINTMANAGER
Trial version available		✓	✗
Node locked software license key (based on edition)	Monitor	1 user <sup>2</sup>	
	Corporate		1 user, 1–10 printers
Local database		✓	✓
Discover and monitor printers		✓	✓
Add and manage print queues		✗	✓
Template printing capable		✗	✓
CardStudio Template Design integration		✗	✓
Included ZMotif Windows printer driver <sup>4</sup>		N/A	✓
External database capable		✗ <sup>3</sup>	✗ <sup>3</sup>
Integrated user login security		✓	✓
USB attach printer support		✗ <sup>3</sup>	✗

<sup>1</sup> Feature set planned at product release.

<sup>2</sup> No technical restriction on the number of monitored printers.

<sup>3</sup> Future availability.

<sup>4</sup> Native PrintManager Windows<sup>®</sup> driver with combined ZXP Series 8™, ZXP Series 3™, and ZXP Series 7™ printer support.

## Product Specifications

### Printer(s) and Operating Systems Supported with Zebra Virtual PrintWare:

- ZXP Series 3, ZXP Series 7 and ZXP Series 8 printers only
- Windows XP (32-bit), Windows 7 (32-and 64-bit), Windows Server<sup>®</sup> 2008 (32- and 64-bit)

### Card Printer Features Supported:

- ZXP Series printers connected with an Ethernet connection
- Single or dual-sided card printing
- Monochrome or color printing
- Lamination<sup>3</sup>
- Magnetic-strip encoding
- Contact and contactless encoding is not currently supported



**Corporate Headquarters**  
+1 800 423 0442  
inquiry4@zebra.com

**Asia-Pacific Headquarters**  
+65 6858 0722  
apacchannelmarketing@zebra.com

**EMEA Headquarters**  
+44 (0)1628 556000  
mseurope@zebra.com

**Latin America Headquarters**  
+01 305 558 8470  
inquiry4@zebra.com

**Other Locations / USA:** California, Georgia, Illinois, Rhode Island, Texas, Wisconsin **Europe:** France, Germany, Italy, the Netherlands, Poland, Spain, Sweden, Turkey, United Kingdom **Asia Pacific:** Australia, China, Hong Kong, India, Indonesia, Japan, Malaysia, Philippines, Singapore, South Korea, Taiwan, Thailand, Vietnam **Latin America:** Argentina, Brazil, Colombia, Florida (LA Headquarters in USA), Mexico **Africa/Middle East:** Dubai, South Africa

\*Specifications subject to change without notice.

©2014 ZIH Corp. All product names and numbers are Zebra trademarks, and Zebra and the Zebra head graphic are registered trademarks of ZIH Corp. All rights reserved. Windows and Windows Server are either registered trademarks or trademarks of Microsoft Corporation in the United States and/or other countries. All other trademarks are the property of their respective owners.

P1057674 (3/14)