



## LaserBand Wristband Product Portfolio

Zebra's self-laminating LaserBand® direct-print laser wristbands allow printing wristbands and labels on one sheet utilizing existing laser printers.

- Patented self-laminating seal protects the wristband from moisture and hand-sanitizers, preserving patient data including text and barcodes for longer wristband usability
- Ability to simultaneously print patient chart labels and the wristband on one sheet, streamlining patient admissions
- Available with hole-punches for securement into patient charts
- Adhesive-free zones around form edges and holes prevent printer jams and reduces costly printer maintenance
- Enables quick deployment of a bar-coded wristband solution without the need for a separate printer for wristbands



**FACT SHEET**

LASERBAND WRISTBAND PRODUCT PORTFOLIO

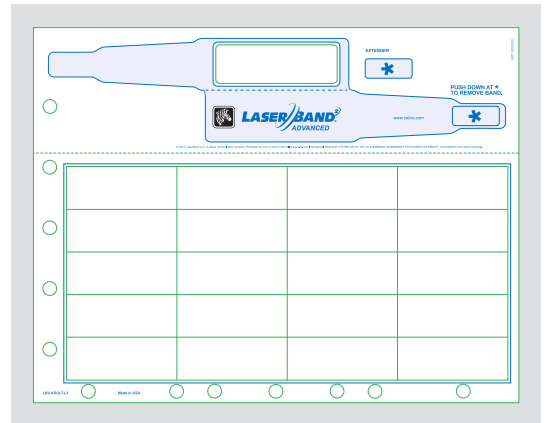
## LaserBand2 Advanced

Zebra's self-laminating LaserBand2® Advanced wristbands feature an advanced shape and design that makes assembly easy and allows the wristband to lie flat on the wrist to enable quick scanning, while providing superior patient comfort.

### Features

Patented self-laminating seal protects the wristband from moisture and hand-sanitizers, preserving patient data including text and barcodes for longer wristband usability.

- Tamper-evident, adhesive closure
- Wristband extender to fit a wide range of wrist sizes
- Available in adult, pediatric and infant sizes, as well as a labor and delivery format
- Latex-free

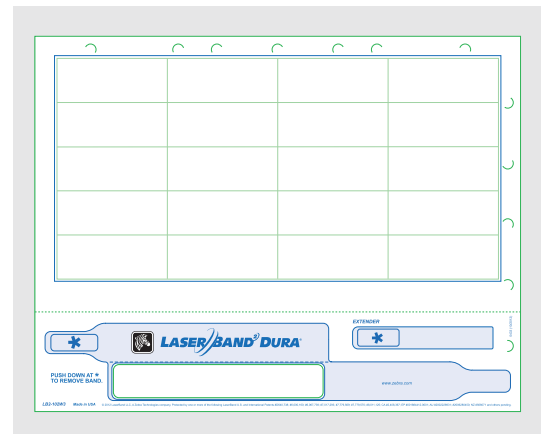


## LaserBand2 Dura

Zebra's self-laminating LaserBand2 Dura direct print laser wristbands feature a classic design that delivers improved comfort and ease of assembly over LaserBand Original.

### Features

- Self-laminating design protects printed text and barcodes
- A wristband extender to fit a wide range of wrist sizes
- Tamper-evident
- Adhesive closure
- Latex-free

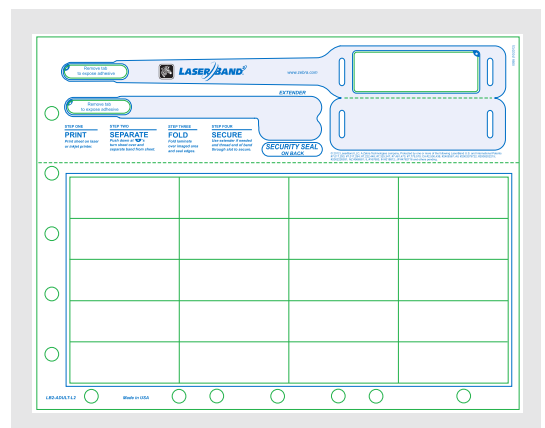


## LaserBand2

Zebra's self-laminating LaserBand 2 laser wristbands feature an enhanced design over traditional laser wristbands that allow the wristbands to lie flat on the wrist to enable quick scanning, while providing superior patient comfort.

### Features

- Self-laminating design protects printed text and barcodes
- Tamper-evident, adhesive closure
- Wristband extender to fit a wide range of wrist sizes
- Available in adult, pediatric and infant sizes, as well as a labor and delivery format
- Latex-free



# Companion Wristband Accessories

## Soft Infant Wristband Accessories

Zebra also offers a complete line of soft infant wristband accessories for use with the LaserBand2 Advanced laser wristbands and ID tags to ensure comfort.

### ComfyCuff



This soft, foam cuff features an adjustable Velcro® closure ensuring infant comfort. It can be used in conjunction with LaserBand2 Advanced pediatric / infant ID tags. 5 x 1.25", Latex Free, Part Number: LB2-BABY-P

### ComfyCuff Infant Swaddle Band



This soft Tyvek band makes identifying a swaddled baby quick and easy. The Swaddle Band creates an extension between the ComfyCuff and LaserBand2 and LaserBand2 Advanced infant ID tags allowing the tag to be easily accessible. 9" long, Latex Free, Part Number: LB2-BABY-SWB9

### Vinyl Infant Wristband



Clip-Closure



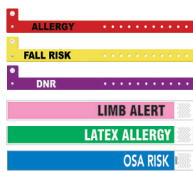
Self-Locking

These latex-free, soft, flexible vinyl wristbands are for use with Z-Band Fusion infant ID tags. The narrow width allows some models of "Abduction Prevention Systems" to be attached. They are available in clip or self-locking closure. The self-locking closure wristband enables size adjustment with a gentle tug as the infant loses mass around the wrists and ankles within the first 24 hours of birth. Clip-Closure Part Number: PS-BABY Self-Locking Closure Part Number: PS- INFANT-ADJ

## Alert Solutions

Zebra's alert solutions enable compliance with state, regional and local color-coding standards for patient conditions such as allergy, DNR, fall-risk, latex-allergy and restricted limb.

### Alert Identification Wristbands



Enable quick identification of special patient conditions (such as, allergy, DNR and Fall Risk) with pre-printed, color-coded wristbands. Available in vinyl with clip-closure or Tyvek® with adhesive closure.

### Alert Identification Labels



Spot-alert color-coded labels can be adhered to any wristband and feature a strong adhesive that causes the label to tear if tampered with. They are available in standard color and designation combinations to support the most critical patient conditions.

For more information about the Laserband Wristband Product Portfolio, visit [www.zebra.com/wristbands](http://www.zebra.com/wristbands)



**NA and Corporate Headquarters**  
+1 800 423 0442  
inquiry4@zebra.com

**Asia-Pacific Headquarters**  
+65 6858 0722  
contact.apac@zebra.com

**EMEA Headquarters**  
zebra.com/locations  
mseurope@zebra.com

**Latin America Headquarters**  
+1 847 955 2283  
la.contactme@zebra.com