



Faster, more accurate vehicle inspections with the all-in-one Zebra Tread Intel™ Solution

The challenge: inefficient outdated and manual workflows

Tire service centers and fleet operators of consumer and commercial vehicles have one thing in common: workflows that need to capture accurate tire tread depth. Associates in tire service centers need to capture tread depth to determine if customer vehicles need new tires. Technicians who maintain fleets of rental vehicles or delivery trucks need to capture tread depth to determine when tires need to be replaced. And both workflows require the capture of a wealth of additional vehicle-related information, such as the Vehicle Identification Number (VIN) and Tire Identification Number (TIN).

Manually handwriting data on a paper form or keying data into a computer is slow and error-prone, compromising worker productivity, data accuracy — and potentially, driver safety. Manual tire depth gauges produce inconsistent results due to variations in technique — and errors are common when the tool is not used correctly. And while digital probes are an alternative, they require regular calibration.

Automate it all with the Zebra Tread Intel solution.



Get all the features you need to automate complete workflows with the Zebra Tread Intel solution

How it works

Start with Zebra's TC78 or TC58e¹ rugged mobile computers with the Zebra Tread Intel snap-on accessory. Add Zebra's Optical Character Recognition (OCR) software, and you have a powerful mobile solution that can easily automate and error-proof workflows that require tire tread depth readings and the capture of additional vehicle identification information. Instead of manually capturing needed data, now a few simple scans can accurately capture it all in seconds. And integration with your applications and workflows is fast and easy with Android Intents, eliminating the need for Software Development Kits (SDKs).

Zebra's Mobility DNA OCR Wedge software

Capture with the scanner and/or camera:

License plates
Tire Identification Number (TIN)
Vehicle Identification Number (VIN)
Driver's licenses
National ID and Resident cards

Zebra's Free-Form OCR software

Capture with the scanner and/or camera:

Capture and process any printed text from labels, documents and more

Advanced high-resolution Integrated camera

Capture any image

Enterprise-class dedicated Integrated scanner

Capture virtually any barcode



Zebra Tread Intel snap-on tire tread depth reader

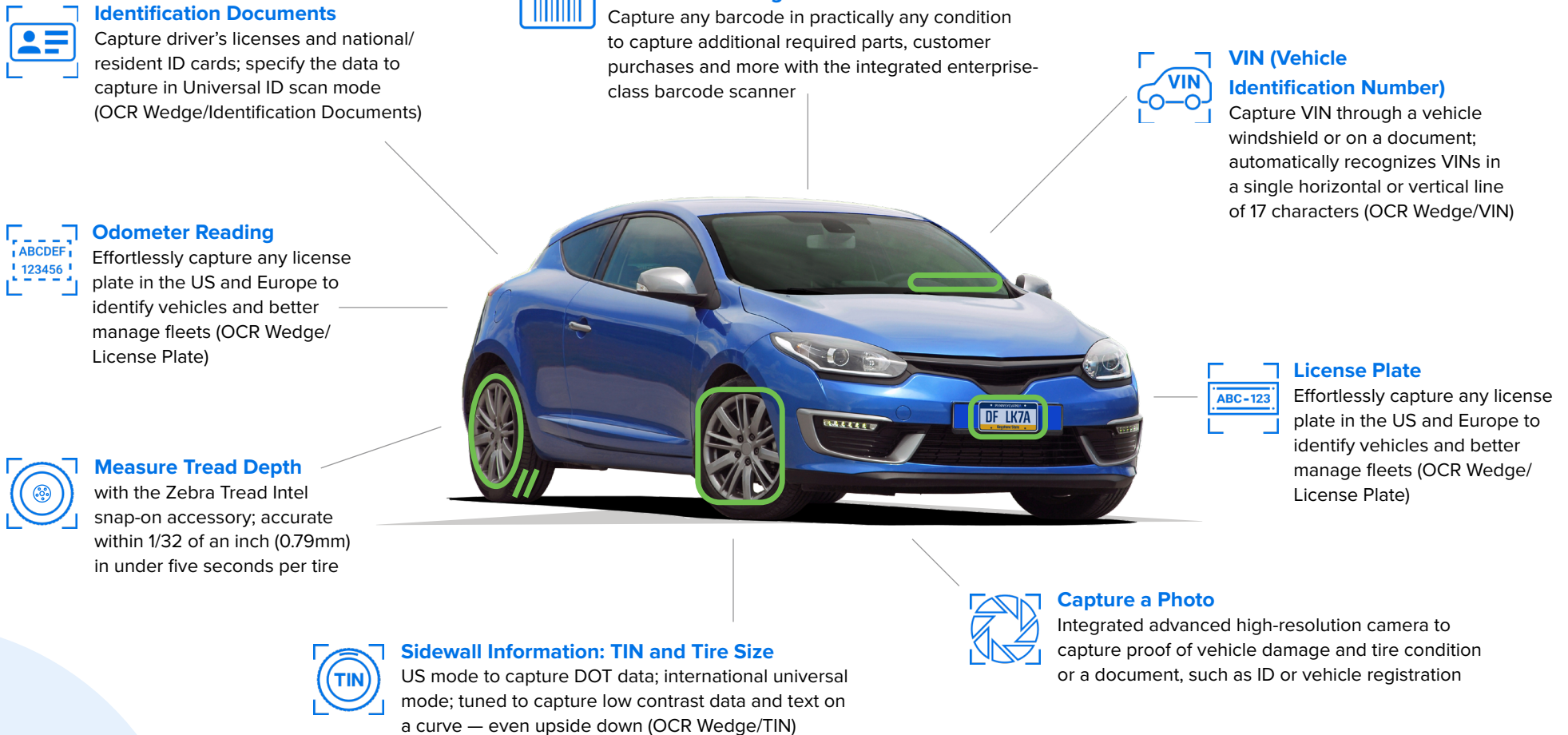
Highly accurate dual laser image sensor measures tread depth within 1/32 in. (0.79mm)

1. Rugged boot required for TC58e

Your workflows re-imagined with the Zebra Tread Intel solution

Capture a comprehensive view of every vehicle in seconds

With Zebra's optional OCR software, workers can capture TIN serial numbers, VINs, license plates, driver's licenses, customer identification cards and more with the press of a button. Data is properly formatted and sent to the right fields in your applications, streamlining operations, improving productivity and increasing data accuracy.



Where will Zebra's Tread Intel solution improve operations in your Tire Service Center?

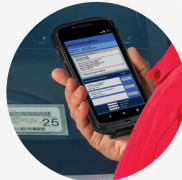
Supercharge the quality, speed, and precision of your tire service with the Zebra Tread Intel solution. A few quick scans automatically and accurately captures customer, vehicle and tire data — no more time-consuming, error-prone manual steps or long waits for a diagnosis. And the same solution can help manage tire and parts inventory, restocking, and more. Give your customers a full assessment of their vehicle, including tire condition and vehicle safety recalls with the Zebra Tread Intel solution.



1

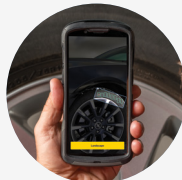
Customer pulls in to have tires and vehicle checked

2



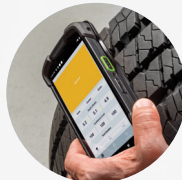
Technician automatically captures license plate and VIN data with the press of a button

3



Technician automatically captures TIN marking on tires to instantly check for safety recalls and check tire age

4



Technician swipes each tire to precisely measure tread depth in less than 5 seconds per tire



7

The vehicle is ready, and the customer is back on the road!



6

Customer vehicle is pulled into the bay for the needed maintenance



5

Service member pulls up tire condition data in real time to recommend the best solution for the vehicle

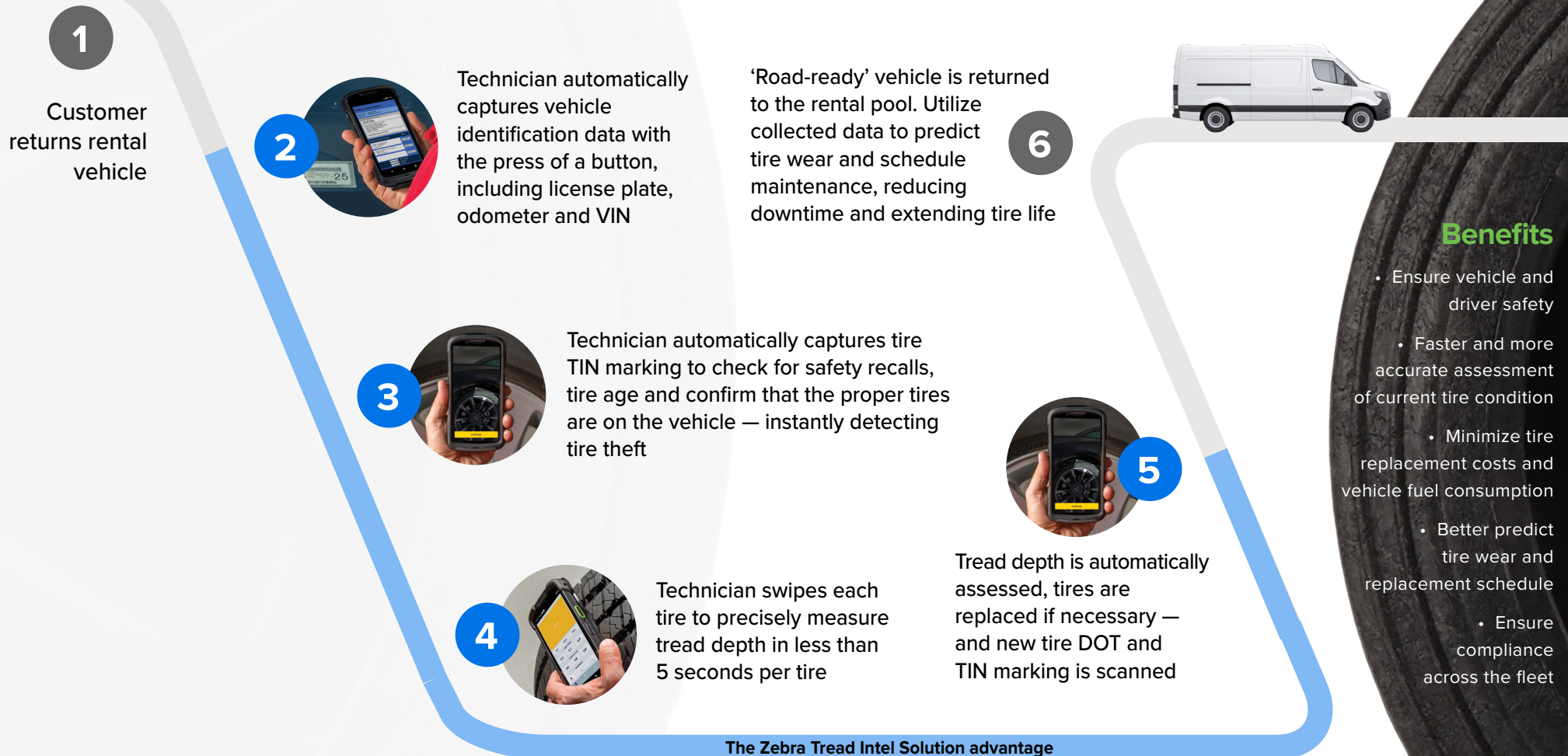
The Zebra Tread Intel Solution advantage

Benefits

- Improve the customer experience
- Reduce wait times
- Assess tire safety faster and more accurately than ever before
- Accurately collect customer and vehicle data
- Lower labor costs
- Ensure compliance

Where will Zebra's Tread Intel solution improve maintenance processes for your vehicle fleet?

With Zebra's Tread Intel solution, vehicles spend less time off of the road for maintenance and inspections and more time on the road serving customers and generating revenue. Technicians can automatically scan required information quickly, easily, and accurately — from current tire tread depth to vehicle and tire identification data to replacement parts, including data on newly installed tires. Time-consuming manual data entry is replaced with automated, accurate data capture. The result? Improved driver safety. Increased technician productivity. Reduced fuel consumption. And reduced tire replacement costs.





To learn more about the Zebra Tread Intel solution and the next generation Zebra Tread Intel snap-on tread depth reader accessory for select Zebra mobile computers, please visit www.zebra.com/zebra-tread-intel



NA and Corporate Headquarters
+1 800 423 0442
inquiry4@zebra.com

Asia-Pacific Headquarters
+65 6858 0722
contact.apac@zebra.com

EMEA Headquarters
zebra.com/locations
contact.emea@zebra.com

Latin America Headquarters
zebra.com/locations
la.contactme@zebra.com

ZEBRA and the stylized Zebra head are trademarks of Zebra Technologies Corp., registered in many jurisdictions worldwide. Android is a trademark of Google LLC. All other trademarks are the property of their respective owners. ©2025 Zebra Technologies Corp. and/or its affiliates. 04/23/2025.