



## L10 Rugged Tablets

The ultimate 10-inch 'go anywhere' tablets





# L10 SERIES

The rugged  
tablets that  
have it all.

## The ultimate rugged work tablet

When it comes to choosing a rugged tablet design for your workers, the L10 has it all. The power and big screen real estate of a laptop. The portability of a tablet. And all the features you need to maximize workforce productivity — and your return on investment.

A big 10.1 inch screen to display the data your workers need to get the job done.

A rugged design built to thrive in demanding environments.

A choice of models to meet the need of practically any worker — and any job.

Two operating systems to meet your technology strategy requirements — Windows or Android.

Numerous integrated options and the largest accessory family in its class, delivering the ultimate in customization.

Up to 25 continuous hours of power on a single battery charge.

Lightning fast performance on all of your applications.

And fast Wi-Fi and cellular connections to keep your workers up and running, no matter where in the world they are.

# Get the ultimate in versatility



**Three models. Two operating systems. Five CPUs.**  
**One of the most versatile rugged tablets on the planet.**

## Pick your Model.

Three models meet the needs of different types of jobs and different types of workers — enabling you to standardize on a single platform while giving each worker the device that best supports their individual job demands. No matter which model you choose, you can get the same rugged design, accessories, CPU platform and consistent support for all your applications.



### XSlate L10

#### Lightest and smallest L10 model

When size and weight matter, give your workers this traditional tablet design — the smallest and lightest rugged tablet in the L10 family. Ideal in vehicles and job sites.



### XPad L10

#### Integrated handle for easy carrying

An integrated handle makes the XPad easy to carry — ideal for people who spend the day on their feet, such as field services, utilities, manufacturing and warehouse logistics workers.



### XBook L10

#### Fully functional removable keyboard

If the job requires heavy data entry, easily attach the rugged fully functional keyboard with the KickStrap accessory to the XSlate to get the XBook.

## Pick your OS.

Choose the operating system that meets the needs of your technology strategy:

### Android

*Upgradeable through Android 14*

Get the enterprise-class security and manageability needed to migrate to the world's number one mobile operating system to create intuitive apps that virtually eliminate training.

### Windows 10 Pro

*Windows 11 capable\**

Instant plug-and-play for existing desktop apps on tablets enables easy integration — along with all the security and productivity that the latest, most advanced desktop OS offers.

\* L10ax Windows only

## Pick your Processor.

Choose the CPU that fits your organization's needs or get a mix for different user types:

### For Android

The Qualcomm Snapdragon 660 delivers blazing speed and ensures compatibility with other Zebra Android devices.

### For Windows

Choose from four CPUs to best meet business needs — or mix-and-match to get the right power for different types of users and applications.

## Pick your Display.

Choose the right touchpanel technology for your applications and environments:

### 1000 Nit capacitive

View Anywhere® 1000 Nit capacitive display for viewing in direct sunlight.

### 1000 Nit Wacom® active digitizer\*

View Anywhere® 1000 Nit active digitizer display for viewing in direct sunlight and the best pen experience for signature capture, note taking, annotations and drawings, even in wet conditions.

\* Available Q2 2022



# Customize it your way with the ultimate in mix-and-match accessories

Easily customize any L10 model to best meet your on-the-job requirements with the largest accessory family in this class. And virtually all accessories work with all models, simplifying purchasing and management.

## Docks



**Vehicle Dock**  
Easy one-hand release  
Optional WAN/WLAN/GPS antenna pass-throughs for use with equipped models  
Shock and vibration tested



**Industrial Dock**  
Ideal in the plant, warehouse or office  
4K port replicator sold separately



**Office Dock**  
Transform the L10 tablet into a full desktop  
Optional spare battery charging bay

## Batteries



**Standard Full-Shift**  
Up to 9.5 hours on a single charge  
Ideal for full shifts  
Hot swappable



**Extended Life Around-the-clock**  
Up to 25 hours on a single charge  
Ideal for extended shifts  
Hot swappable



**Kickstand Extended Battery Bracket**  
Allows tablet to stand upright or lie flat  
Simplifies use in the field with or without the companion keyboard  
Fully adjustable viewing angle

## Miscellaneous



**Shatter-Resistant Screen Protector Film**  
Protects against scratches and wear  
Reduces glare and reflection  
Clear/sharp viewing in all lighting

## Cases/Carrying Accessories



**KickStrap**  
Combination kickstand and rotating hand strap  
Brings desktop convenience to field mobility



**Soft Handle**  
Attaches to top of tablet  
Smooth, durable rubber  
Maximum comfort and grip  
Integrated long pen garage



**Shoulder Strap**  
Attaches to top handle accessory  
Adjustable length  
Easy on/off via strap clips  
Ideal for hands-free carrying



**Carry Case**  
Professional carrying case  
Integrated handle  
Optional shoulder strap  
Easy access to power button, cameras and ports

## Chargers



**Single Bay Battery Charger**  
Works with standard and extended batteries  
Charge standard battery in 2.75 hours  
Charge extended battery in 3.25 hours



**AC Power Pack**  
Charge from any standard wall plug



**Screen cleaning cloths**  
Approved wiping cloth  
Removes dirt and skin oils  
Keeps display clean and smudge free

## Input Devices



**Rugged Companion Keyboard and Backlit Companion Keyboard**  
Ideal for intensive data entry  
Easily attach and detach as needed  
IP65 sealing  
3.2 ft./1 m drop tested  
Rugged hinge



**Pens**  
Passive pens  
MPP e-pens  
Active pens (for digitizer displays only)  
1.5 mm pinpoint accuracy  
Makes writing as easy as pen and paper

## Integrated Available Options



**Barcode scanner (XPad only)**  
1D/2D imager



**HDMI-in port\***  
Allows the tablet to show a video feed from a set-top box  
\* Not available on L10ax Windows; may not be combined with serial port



**Smart Card/CAC Reader (Windows)**  
FIPS 140-2 compliant  
Ideal for government/military  
Supports over a dozen interfaces



**True Serial (RS232)**  
USB conversion on Android only  
Ensures compatibility with legacy Serial devices without timing issues  
Eliminates USB to serial adapters



**UHF RFID Reader**  
Read tags up to 9.8 ft./3 m  
Mounts on the back of the tablet  
Works in subzero temperatures

# An advanced platform with all the right features

The L10 family is loaded with all the features your workers need to maximize task efficiency and productivity, from world-class processing power and the fastest, most reliable wireless connections to features that streamline workflows, automate data capture and improve workforce collaboration.

## The ultimate in processing power

Whether you choose Windows or Android, you get some of today's latest processors, ensuring blazing fast performance on all your applications to maximize workforce productivity. For Windows models, choose from the latest 11th generation Intel processors on the L10ax to get maximum computing power and application performance to a more economical Pentium processor on the L10. And for Android, the Qualcomm SD660 ensures great performance for all applications.

## Flawless barcode capture (XPad only)

With the XPad, workers can capture barcodes as fast as they can press the scan button. Integrated enterprise-class scan engines provide a megapixel sensor, wide field of view and a broad working range to make barcode capture faster and easier than ever. And Zebra's exclusive PRZM Intelligent Imaging technology ensures that workers can capture every barcode in virtually any condition — even if they are dirty, damaged, scratched or poorly printed.

## The ultimate in cellular connectivity

Advanced cellular options connect workers all around the world, in urban and remote areas — in vehicles or on foot, indoors or out in the field. The L10ax Windows is equipped with optional 5G/4G, while the L10 Android and L10 Windows Pentium support optional 4G.

## The ultimate in Wi-Fi connectivity

Be ready for the Wi-Fi networks of today and tomorrow. The L10ax Windows offers support for Wi-Fi 6E, including the new 6 GHz spectrum, for greater capacity, faster wireless speeds and lower latencies. With Wi-Fi 6E, you can future proof your network to support robotics and augmented reality applications. And the L10 supports 802.11ac and 2x2 MU-MIMO technology to increase the capacity and efficiency of your Wi-Fi network.

## First-responder cellular network support

Certification on leading public service networks provides first responders with the reliable connections they need when emergencies overload the commercial networks.

## Advanced display

Virtually nothing will stop workers from seeing and entering information. The display works even when wet. Workers can see the display in any lighting condition, even bright sunlight, with the ultra-bright 1,000 Nit View Anywhere® display. And workers can choose how they want to interact with the screen and enter data — a stylus or a finger, even with a glove.



## Rear camera for better documentation and collaboration

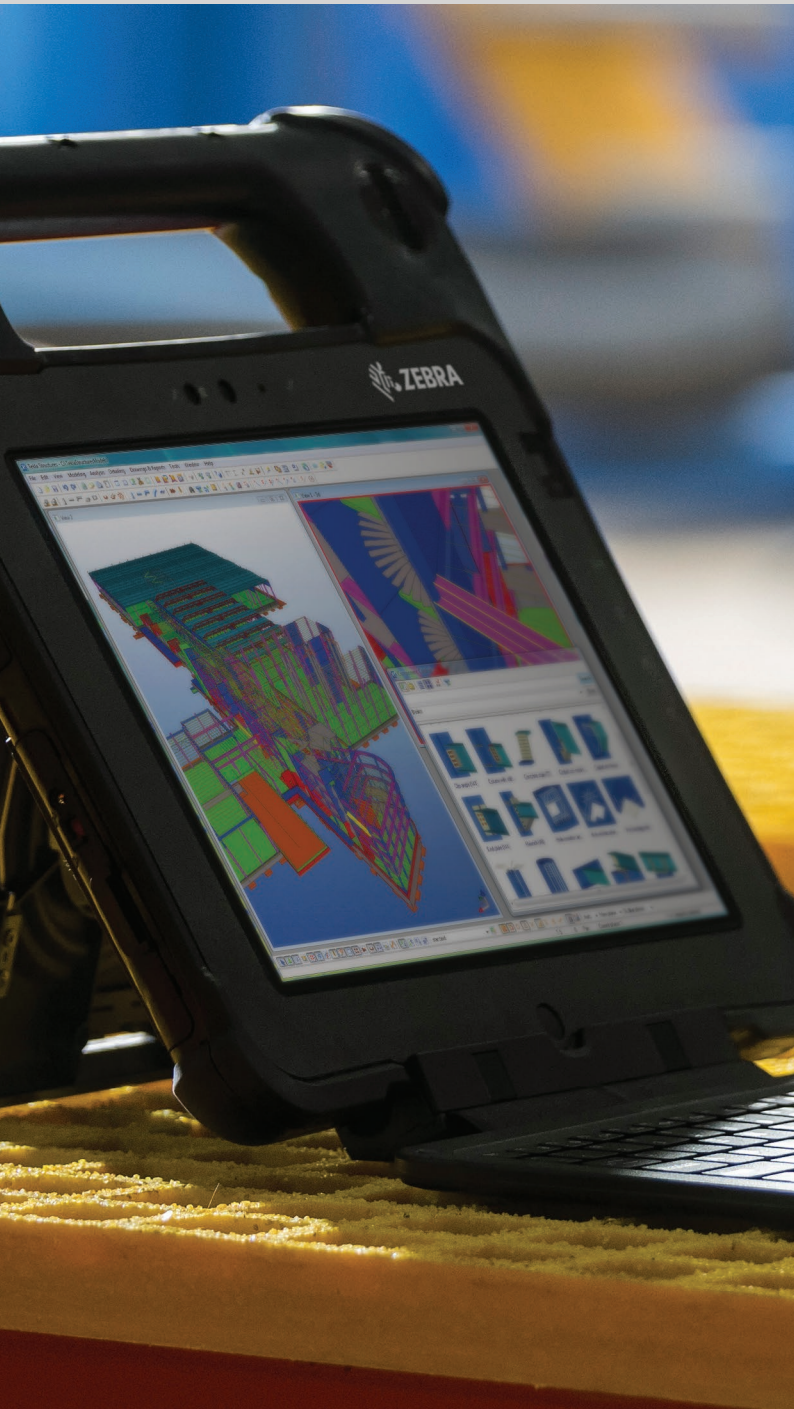
The 13 MP camera captures highly detailed photos and videos to capture proof of condition, proof of delivery, proof and service and more with the simple press of a button.

## Front camera for video calls and facial recognition

Technicians and other workers can show remote experts the problem for faster issue resolution and better first-time repair rates, improving customer satisfaction. The Windows Hello front facing camera on L10ax Windows tablets enhances device security with facial recognition.

# Built-to-last rugged design

Designed and built from the ground up with a rugged design that can handle it all.



## Waterproof and dust-proof

IP65 sealing with port doors open or closed  
Port covers for ease of handling

## Drop-proof

Double testing:  
6 ft./1.83 m to plywood over concrete while operating  
4 ft./1.2 m to concrete

## Extreme temperatures

Subzero cold: -4° F/-20° C  
Extreme heat: 140° F/60° C

## Shock tested

40g operating  
Thermal shock tested

## Lightweight magnesium frame

Stronger than steel,  
lighter than aluminum  
Provides strength without added weight

## Certified for hazardous environments

Class 1 Division 2 certified\*  
Safe for use in presence of flammable liquids, gases and vapors

## Corning Gorilla Glass display

Provides maximum scratch and-impact resistance in a thicker layer than typical consumer devices

## Built tough and tested for it all

- Subzero cold
- Blazing heat
- Cold start
- Waterproof
- Wind-driven rain
- Blowing sand
- Blowing dust
- Drop tested
- Vibration
- Shock
- Thermal shock
- Humidity
- Natural cycle humidity
- Fluid contamination
- Explosive atmosphere
- Altitude



**Technology is complex. Maintenance doesn't have to be.**

## **Zebra OneCare™ Maintenance Plans**

Every day, you count on your Zebra tablets to streamline your business processes, improve accuracy and increase workforce productivity when and where it matters most. When your tablets are down, so are your workflows. You don't have time for unexpected surprises that halt your operations. You need a plan to protect against failures and prevent frustrations. Keep it simple and certain with Zebra OneCare maintenance plans. Never one-size-fits-all, choose the "right-for-you" plan that's tailored to your exact needs and business urgency. And with our global reach, we offer coverage in practically every corner of the world.

### **Choose your service level.**

#### **Zebra OneCare Essential**

Zebra's core support plan keeps your day-to-day device operations covered and your fleet up and running. Get comprehensive protection, including phone support during your local business hours, three-day repair turnarounds, software and security updates and cloud-based visibility into repair reports and more with VisibilityIQ™ OneCare™. Much more than backup warranty and repair, Zebra OneCare Essential adds years of ongoing enhancements to protect your technology from the inside-out.

#### **Zebra OneCare Select**

If your business requires maximum device uptime and around-the-clock support, Zebra OneCare Select delivers. You get all the entitlements of Zebra OneCare Essential, plus 24/7 live-agent telephone support and next-business-day, 'like new' device replacement pre-loaded with your settings, software, apps and OS, and LifeGuard versions\* for a device that's ready-to-use right out of the box. (\*LifeGuard available for L10 Android only)

#### **Take the worry out of battery performance with Zebra Battery services**

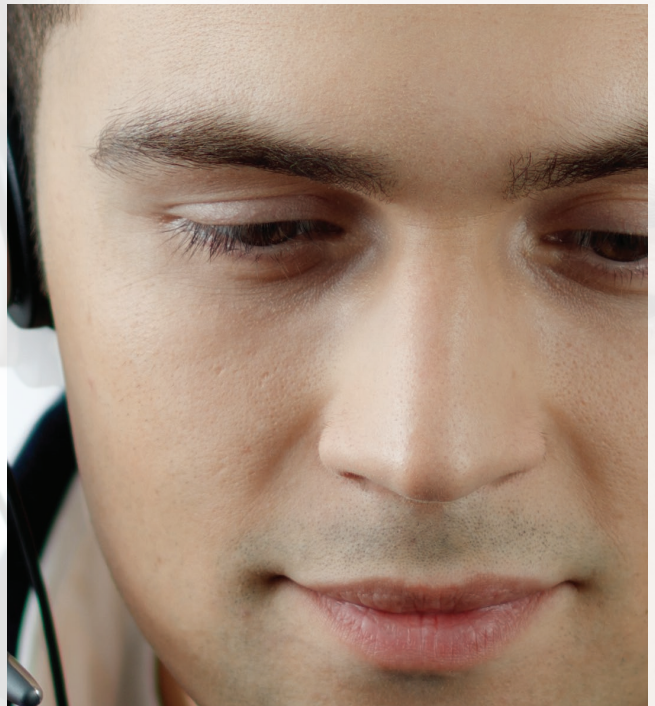
These add-on enhancements give you a discount on battery services most devices need over their life. Our Battery Maintenance service tests and replaces batteries that cannot reach a minimum 80% charge during testing, while Battery Refresh provides a consolidated shipment of new batteries at a pre-determined timeframe.

#### **Maximize uptime with Zebra Device Commissioning services**

When your Zebra tablets are sent in for repair, Device Commissioning Services ensure they're returned ready to be put back to work, right out of the box. Zebra will set up your devices with your software, apps, LifeGuard version for L10 Android tablets, settings and more preloaded to your specifications. And you can choose your commissioning service based on your desired customization and business needs.

#### **Choose your shipping time with Enhanced Shipping Logistics**

Need to minimize downtime during the repair process? Enhanced Shipping Logistics options provide faster inbound and outbound shipping service to and from Zebra Repair Centers. We can expedite collections with a courier pick-up of devices from your location to the Repair Center. And Express Outbound Shipping speeds up delivery of repaired devices back to your location by the next business day.



Service availability, service features and/or repair turn-around times may differ by country. Please contact your Zebra sales representative for details.



**For more information about the L10 Rugged Tablets,  
please visit [www.zebra.com/L10](http://www.zebra.com/L10)  
or access our global contact directory at  
[www.zebra.com/contact](http://www.zebra.com/contact)**



**NA and Corporate Headquarters**  
+1 800 423 0442  
[inquiry4@zebra.com](mailto:inquiry4@zebra.com)

**Asia-Pacific Headquarters**  
+65 6858 0722  
[contact.apac@zebra.com](mailto:contact.apac@zebra.com)

**EMEA Headquarters**  
[zebra.com/locations](http://zebra.com/locations)  
[contact.emea@zebra.com](mailto:contact.emea@zebra.com)

**Latin America Headquarters**  
[zebra.com/locations](http://zebra.com/locations)  
[la.contactme@zebra.com](mailto:la.contactme@zebra.com)

ZEBRA and the stylized Zebra head are trademarks of Zebra Technologies Corp., registered in many jurisdictions worldwide. Android is a trademark of Google LLC. All other trademarks are the property of their respective owners. ©2021 Zebra Technologies Corp. and/or its affiliates. 11/09/2021.