



Zebra Inventory Visibility

Take charge of your inventory and increase your profitability by using Zebra Inventory Visibility to perform your own physical inventory counts. The simple, out-of-the-box deployment and turnkey installation means you can get started right away performing counts that are easier to plan for and much more accurate.



Put Inventory Back into Your Hands

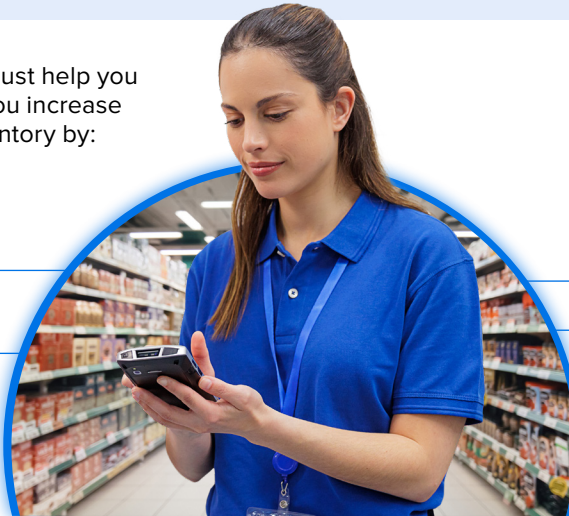
Retailers need better inventory visibility in order to navigate rising costs, unreliable third-party vendors, supply chain instability and more. Take back control of your inventory with a self-scan inventory solution that increases visibility and accuracy across your stores.

Zebra Inventory Visibility doesn't just help you manage your inventory; it helps you increase insight and visibility into your inventory by:

Utilizing your own teams to perform inventory counts

Performing counts when and how you need them

Depending on expert white-glove service and support at every step



Realize cost savings up to **50%** on your inventory events

With measurable improvements across your store, including:

Higher inventory accuracy

Simplified planning

Improved margins

Easier implementation

Real-time visibility

Benefits for Every Member of the Team

Zebra Inventory Visibility helps make work easier for your inventory management, store operations, and loss prevention teams, providing tangible benefits to associates, customers, and the bottom line.



Gain Control of Inventory

Improve Inventory Accuracy

Automate data capture for greater precision in counts, higher in-stock ratios and quicker fulfillment rates

Gain Schedule Control and Flexibility

Get full control of your inventory events by scheduling them on your terms and timelines with your own associates

Reduce Costs

Eliminate third-party fees and the need for redundant checks on third-party work



Streamline Operations

Take Charge

Eliminate the frustration of dealing with unreliable third-party vendors, and ensure greater accuracy and reliability to make informed decisions

Return to Normal Business, Faster

Eliminate the need for set up and clean up, allowing your employees to focus on providing exceptional customer service and your stores to reopen in no time

Enhance Safety and Security

Make sure your staff is safe by limiting outside labor and relying on your own teams



Mitigate Retail Loss

Minimize Shrink and Loss

Zero in on where theft happens by store and location with real-time visibility of inventory counts per SKU

Stay Alert to Leaks from All Sources

Make sure you always know what's in stock to prevent losing money from missing, broken or stolen items

Keep the Store Secure

Minimize security risks by trusting your own reliable teams instead of unverified third-party temporary staff

Simplify and Streamline Retail With Zebra Inventory Visibility

Drive inventory accuracy across your store for every inventory event. With a self-scan model, you can tackle everything inventory with greater accuracy—from physical inventory and cycle counting to streamlined returns management.



Physical, Wall-to-Wall Inventory

Save Money and Hassle: With our ready-to-use turnkey solution, utilize your own staff, to save 50% on counting costs and avoid the headaches of external service providers.

White Glove Support: Benefit from our 60 years of experience and a dedicated support team. We provide comprehensive training, 24/7 help desk assistance and personalized guidance.

Stay Informed in Real Time: Get real-time visibility into your inventory as counts happen so you can make informed decisions and take action immediately.



Targeted Cycle Counts

Perform Inventory Counts with Ease: Maintain inventory accuracy by conducting frequent cycle counts that can be tailored to your store's specific needs. Easily execute counts with quick implementation on your own Zebra device or right from a kit.

Get Quick, Accurate Results: Quickly access the information you need using our integrated analytics dashboard with filters.

Utilize Advanced Functionality: Take advantage of stickerless scanning, more robust area scanning, missing SKU reports, inventory alerts, and items not counted reporting.



Retail Returns Management

Make Returns Simple: Easily manage returns with a purpose-built solution designed for the buy, try and return era.

Accurately Capture Data: Scan multiple barcodes simultaneously with speed and precision.

Utilize Analytics: Get instant return statuses and identify shrink with actionable data to improve operations.

Make inventory events easier to plan, faster to execute and much more accurate, driving efficiency and saving money across your retail operation.

Optimize your inventory today at www.zebra.com/inventory-visibility



NA and Corporate Headquarters
+1 800 423 0442
inquiry4@zebra.com

Asia-Pacific Headquarters
+65 6858 0722
contact.apac@zebra.com

EMEA Headquarters
zebra.com/locations
contact.emea@zebra.com

Latin America Headquarters
zebra.com/locations
la.contactme@zebra.com

ZEBRA and the stylized Zebra head are trademarks of Zebra Technologies Corp., registered in many jurisdictions worldwide. All other trademarks are the property of their respective owners. ©2023 Zebra Technologies Corp. and/or its affiliates. 01/2025.