



# ZEBRA™ IDENTITY GUARDIAN



## Simple, convenient and secure device authentication

Identity Guardian is a proprietary software innovation that seamlessly merges the ease of biometric authentication with multifactor login, delivering an unparalleled balance of convenience and security in the sign-in experience.

Identity Guardian is not solely tailored for individually assigned devices; rather, it boldly addresses the intricate challenges prevalent in shared device environments. By harnessing a login methodology familiar to users (reminiscent of their personal cell phone interface), Identity Guardian significantly mitigates user frustration while steadfastly fortifying the security of your mobile devices and their invaluable contents.



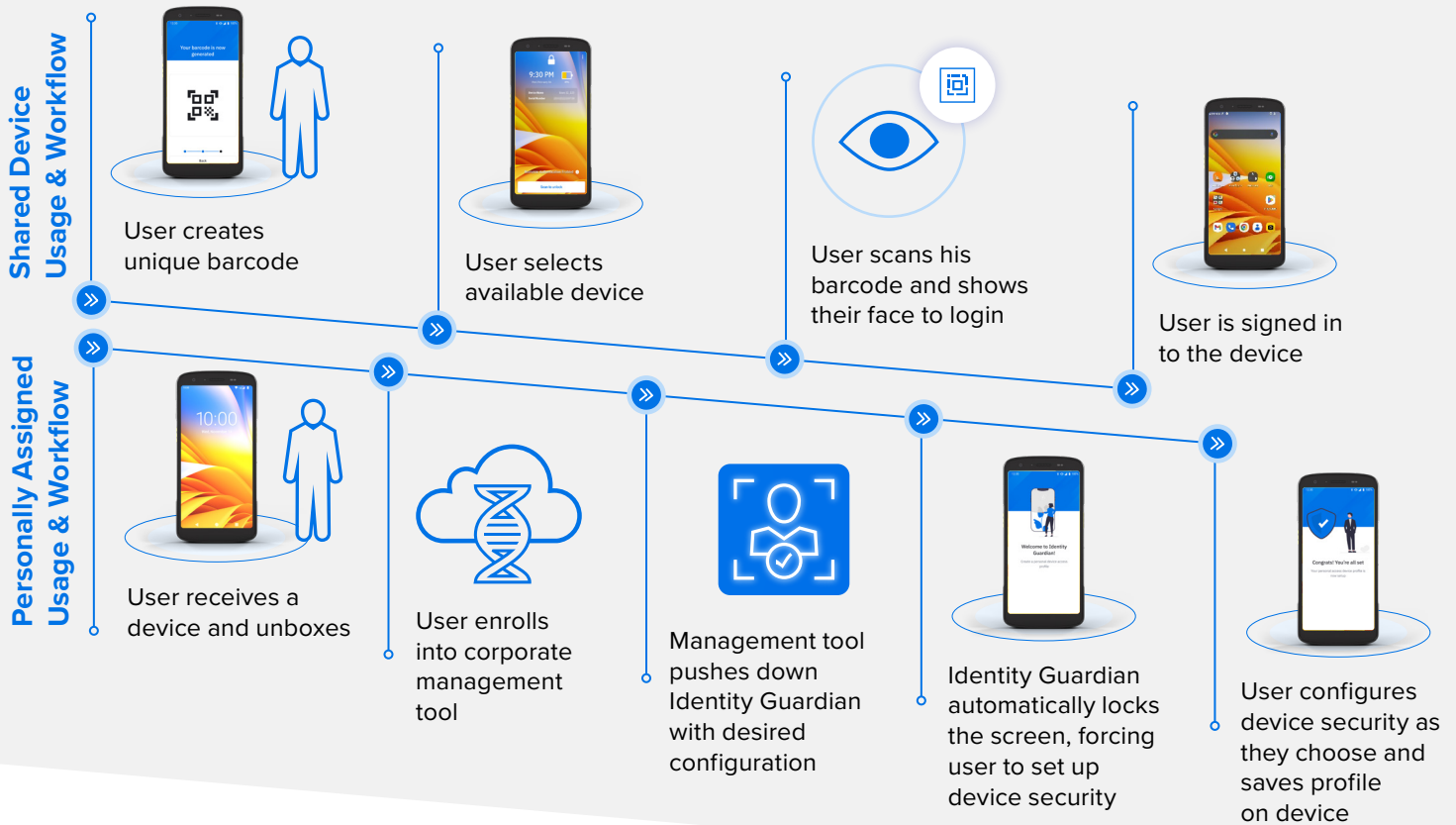
### Fast and Efficient Login

Identity Guardian enables login to enterprise mobile computers or tablets using biometric facial profile just like a personal device. If you prefer not to utilize facial biometric, you can use a pin to securely access the device. The solution also helps with application authentication, via integration with IdPs and SSO support.



### Maximum Data Protection

Numerous methods ensure that your employee's personal data remains fully protected. When deployed in a **shared device** model, user data is securely encrypted in a personal barcode managed by the user. In a **personally assigned** device model, user data is securely protected within the Android framework.



## 10 Key Benefits of Zebra Identity Guardian

- |   |  |  |  |  |
|---|--|--|--|--|
| <p><b>01</b><br/>Mult-factor authentication provides a higher level of security</p> | <p><b>02</b><br/>Familiar user experience</p>                    | <p><b>03</b><br/>No more password related issues</p> | <p><b>04</b><br/>IdP integration for simplified app authentication</p> | <p><b>05</b><br/>Improved productivity and efficiency</p>                        |
| <p><b>06</b><br/>Reduced risk of unauthorized access and theft</p>                  | <p><b>07</b><br/>Centralized audit trails and accountability</p> | <p><b>08</b><br/>Role-based access</p>               | <p><b>09</b><br/>Integrated with Zebra's portfolio of solutions</p>    | <p><b>10</b><br/>APIs enable integration with customers' homegrown solutions</p> |

To learn more about Zebra Identity Guardian and how it can help your organization, contact your Zebra sales representative, or visit: [zebra.com/identityguardian](https://zebra.com/identityguardian)



**NA and Corporate Headquarters**  
+1 800 423 0442  
inquiry4@zebra.com

**Asia-Pacific Headquarters**  
+65 6858 0722  
contact.apac@zebra.com

**EMEA Headquarters**  
zebra.com/locations  
contact.emea@zebra.com

**Latin America Headquarters**  
zebra.com/locations  
la.contactme@zebra.com