

FACT SHEET

ZEBRA S-400 ELECTRONIC
TEMPERATURE SENSOR



S-400

Wireless, Portable Sensors for Monitoring and Controlling Cold Chain Performance

- Bluetooth®-enabled temperature sensor
- Check temperature readings wirelessly from smartphone, tablet, or fixed gateway
- Single or multi-use with up to 12-month battery life
- Internal sensor and memory for 16,000 data points
- Wireless access through packing materials, containers and cold chain equipment
- Cloud sharing and storage
- Light, compact design to fit easily in packaging

The Zebra S-400 is an easy-to-use, practical and cost-effective solution for wireless temperature tracking. It's small enough to fit into most any size and type of container, cooler or enclosure. Since the sensor is readable through the container walls, it can be used to monitor cold chain performance for temperature-sensitive products, without compromising packaging integrity. Adhesive backing makes placement simple and reliable.

Embedded sensors and Bluetooth® wireless connectivity provide temperature data logging continuously through the product's journey. With the free EDGEVue® app installed on any iOS and Android smartphone or tablet, the geolocation data from the devices and the temperature readings from the sensor can be easily accessed and shared on demand.

In addition, the temperature data can automatically be accessed and uploaded to the cloud using the OCEABridge® gateway.

EDGEVue provides easy user access to establish customized parameters for each use of the S-400, including alarms, data logging intervals, startup options, and time and temperature units.

Data can be transmitted to EDGECloud®, which can be accessed 24/7 from anywhere through the EDGEVue Web app for viewing and reporting.

FACT SHEET

ZEBRA S-400 ELECTRONIC
TEMPERATURE SENSOR

Sensor Specifications

- Single or multi-use, portable**
- Temperature Range:** -30°C to +70°C (-22°F to 158°F)
- Accuracy:** +/- 0.3°C
- Resolution:** 0.01°C
- Temperature Display:** °C or °F, selectable

Dimensions

- Dimensions:** L 3.2 x W 1.4 x D 0.3 in (81 x 43.4 x 8.2 mm)
- Thickness:** 0.3 in (8.2 mm)
- Weight:** 0.9 oz (25.2 g)
- Case:** ABS, IP30 protection, adhesive backing for mounting
- Serial Number:** Unique for each module

Battery

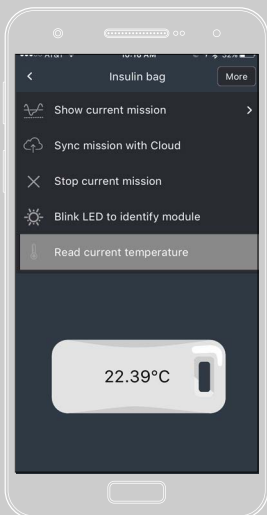
- Battery:** Li Manganese dioxide/Organic electrolyte, non-replaceable
- Battery Life:** Up to 12 months (dependent on data logging frequency)
- Shelf Life:** minimum 4 months

Data Logging Functions

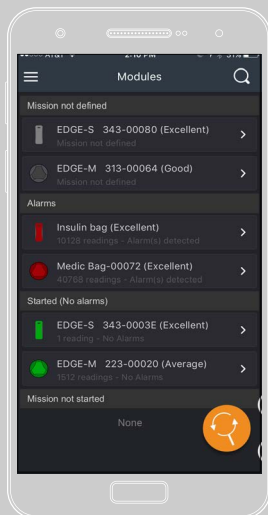
- LED indicator:** Alarm status and communication
- Alarm Limits:** Programmable high and low, with delay
- Startup options:** Immediate, Delayed with programmable threshold
- Data logging intervals:** Programmable, 15 seconds to 59 seconds (1 second intervals) OR 1 to 255 minutes (1 minute intervals)
- Data logging stop:** Programmable, memory full, or overwrite oldest values
- Date/Time Stamps:** Programmable local time or GMT
- Memory Internal:** up to **16,000 data points**
- Reports:** CSV and PDF file formats



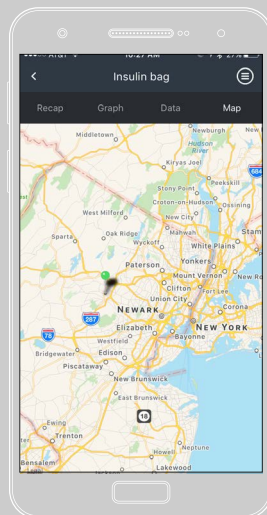
Download the free EDGEVue® app from iTunes or Google Play



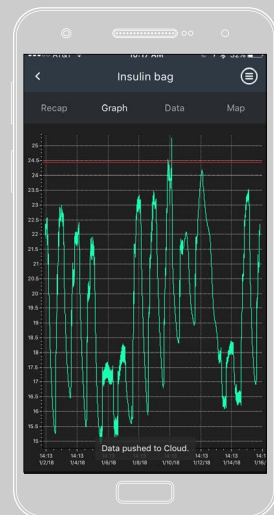
Use EDGEVue to set up data logging profile and preferences



EDGEVue automatically detects the S-400 sensors within Bluetooth range



Uses smartphone/tablet GPS to track routes with detailed information



Connect to the S-400 to monitor data on-demand, anywhere along the delivery route

FACT SHEET

ZEBRA S-400 ELECTRONIC
TEMPERATURE SENSOR

EDGEVue® and Wireless Specifications

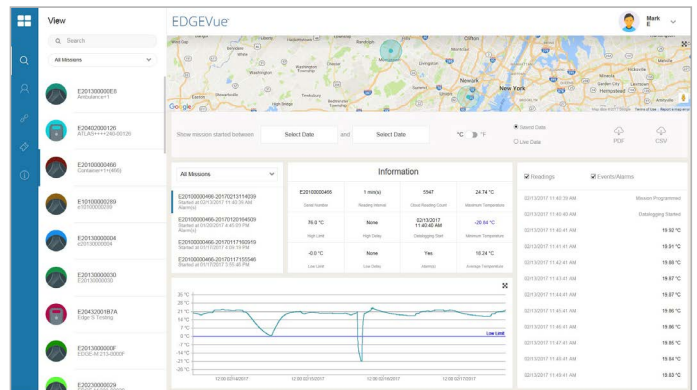
Bluetooth® 4.2 technology

Wireless range: Line-of-sight, up to 50 meters, 164 feet

Device Compatibility: Program and read with iPhone 4S or higher, iPad 3 or higher, and Android 4.4 or higher

Detection: Wireless access through isothermal packaging, refrigerated vehicle siding, freezers, refrigerators and cold rooms (may depend on wall thickness and environmental conditions). EDGEVue App, Free on iTunes and GooglePlay, automatically detects Zebra devices within Bluetooth range. Automatic data collection with EDGEBridge®

Cloud Storage and Access: Store unlimited data on EDGECloud® and access through the EDGEVue Web application for viewing and generating reports



Access, view and manage information from Zebra sensors using the EDGEVue web application.

Tap into the future of temperature monitoring at zebra.com/electronictempensors



NA and Corporate Headquarters
+1 800 423 0442
inquiry4@zebra.com

Asia-Pacific Headquarters
+65 6858 0722
contact.apac@zebra.com

EMEA Headquarters
zebra.com/locations
contact.emea@zebra.com

Latin America Headquarters
+1 866 230 9494
la.contactme@zebra.com