



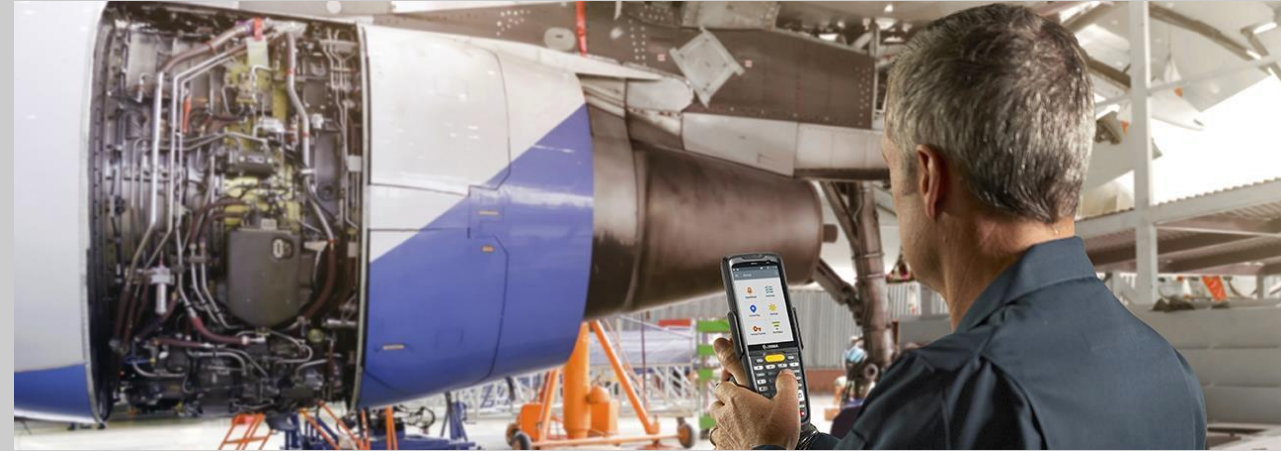
MC2200/MC2700

Configuration & Accessories Guide

Version 1.2
February 2025

Contents

- I. MC2200/MC2700 Series Configuration Guide
- II. MC2200/MC2700 Series Accessories Guide



MC2200/MC2700

Configuration Guide



MC2200/MC2700 Configuration Matrix

Configuration Options	MC2X	Option	Description
Network Version	MC2 2 XX-XXXXXXX MC2 7 XX-XXXXXXX	2 7	WLAN Only WWAN-WLAN
WAN	MC2X 0 X-XXXXXXX MC2X A X-XXXXXXX MC2X B X-XXXXXXX MC2X C X-XXXXXXX	0 A B C	LAN Only Multi-Operator, HSPA+ / LTE (Americas + Canada), GPS Multi-Operator, GSM/HSPA+ / LTE, (ROW: EMEA + APAC), GPS Multi-Operator, GSM/HSPA+ / LTE, (China), GPS
LAN & PAN	MC2XX J -XXXXXXX MC2XX K -XXXXXXX	J K	802.11a/b/g/n/d/h/i/k/r/ac + BT 5.x no NFC 802.11a/b/g/n/d/h/i/k/r/ac + BT 5.x with NFC
Operating System	MC2XXX- 2 XXXXXX MC2XXX- 3 XXXXXX MC2XXX- 4 XXXXXX	2 3 4	Android GMS Android AOSP (Non-GMS) Android GMS with eSIM Support
Data Capture	MC2XXX-X A XXXXX MC2XXX-X B XXXXX	A B	SE4100 Scanner SE4100 Scanner + 13MP Rear Facing Camera with Flash
Keypad	MC2XXX-XX 3 XXXX	3	34 (FN Numeric)
Battery	MC2XXX-XXX S XXX MC2XXX-XXX E XXX	S E	Standard Extended
Memory / Haptic	MC2XXX-XXXX 2 XX MC2XXX-XXXX 3 XX MC2XXX-XXXX 4 XX	2 3 4	2GB/16GB 3GB/32GB 3GB/32GB with Vibrator (China specific SKUs only)
Country	MC2XXX-XXXX BR MC2XXX-XXXX CN MC2XXX-XXXX IN MC2XXX-XXXX NA MC2XXX-XXXX RU MC2XXX-XXXX RW MC2XXX-XXXX TR MC2XXX-XXXX XP	BR CN IN NA RU RW TR XP	Brazil (Req'd for WWAN Only) China (WWAN / WLAN) India (WWAN / WLAN) North America (Canada, USA, PR) (WWAN / WLAN) Russia (WLAN / WWAN) Rest Of World WLAN / WWAN Turkey (WLAN / WWAN) PTT-Removed (Push-To-Talk) (WLAN/WWAN)

MC2200/MC2700

Accessory Guide

MC2200 / MC2700 Accessory Overview

Built for work to get the job done across your business with accessories that enable better backroom management and expanded flexibility

Low-Cost Desktop USB-C Cradle



Hand Strap



Attachable Trigger Handle

4 Slot Battery Charger



Screen Protector

Single Slot Desktop Cradle with Spare Battery Charger. Supports optional Ethernet Module

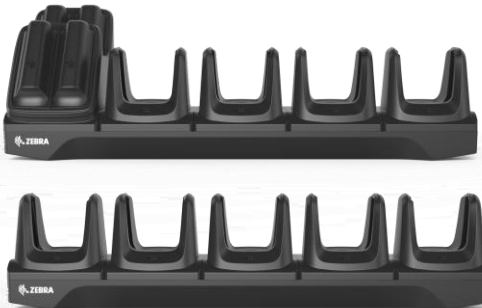


Holsters and Rubber Boots

Two Battery Options (3500mAh & 4900mAh)



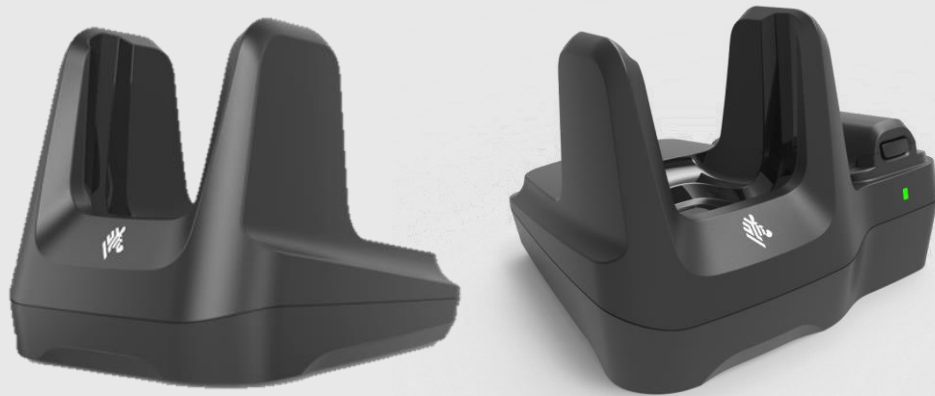
USB-C Charge Cable



Multi-Slot Cradle System (Two Options; 5 Terminal, 4 Terminal & 4 Battery Charger)

Cradle System

Single Slot Cradle



Single Slot Cradle Options:

CRD-MC2X-1SCU-01

Single slot USB cradle charges one device. Allows USB communication to the device with integrated 1m (3.3') USB-A cable.

Optional: Power supply **PWR-WUA5V12W0XX** for charge only. Country specific part numbers are available for order

CRD-MC2X-2SUCHG-01

Single slot USB cradle with spare battery charging, charges one device and one spare battery. Allows USB or ethernet communication to the device with an additional micro-USB cable (25-124330-01R) or ethernet dongle (MOD-MT2-EU1-01).

Requires: Power supply **PWR-BGA12V50W0WW**, DC line cord **CBL-DC-388A1-01** and country specific 3 wire AC line cord.

Additional Accessories for Device-only Single Slot Cradle



PWR-WUA5V12W0XX

AC/DC power supply

AC Input: 100-240VAC

DC Output: 5VDC, 2.5A, 12.5W

World-Wide: **PWR-WUA5V12W0WW**

Australia: **PWR-WUA5V12W0AU**

Brazil: **PWR-WUA5V12W0BR**

China: **PWR-WUA5V12W0CN**

Europe: **PWR-WUA5V12W0EU**

India: **PWR-WUA5V12W0IN**

Korea: **PWR-WUA5V12W0KR**

UK: **PWR-WUA5V12W0GB**

Additional Accessories for Single Slot Cradle with Spare Battery Charger



MOD-MT2-EU1-01

USB To Ethernet Module. Mechanical switch selects between USB port and RJ45 Ethernet jack.



PWR-BGA12V50W0WW

Level VI AC/DC power supply (brick, replacement for PWRS-14000-148R)

AC Input: 100-240VAC, 2.4A

DC Output: 12VDC, 4.16A, 50W

Requires: DC line cord and country specific grounded AC line cord.



CBL-DC-388A1-01

DC line cord for running the single slot cradles or battery chargers from a single Level VI power supply PWR-BGA12V50W0WW, Level VI replacement for PWRS-14000-148R.

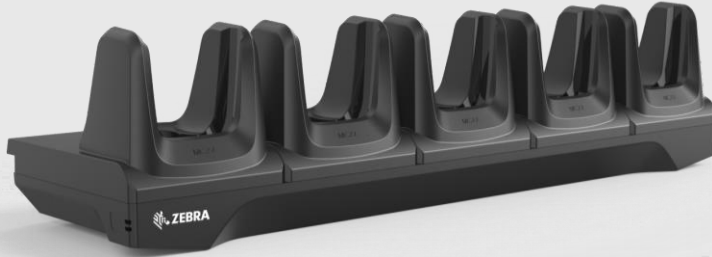


Various Part Numbers – please contact your Zebra sales associate for more details

AC line cord, 7.5 feet long, grounded, three wire for power supplies.

Cradle System

Multi-slot Cradles



Multi-Slot Cradle Options:

CRD-MC2X-5SCHG-01

5-Slot Terminal Charger.

CRD-MC2X-4SC4BC-01

4-Slot Terminal Charger with 4-Slot Battery Charging.

All Multi-Slot Cradles Require: Power supply **PWR-BGA12V108W0WW**, DC cord **CBL-DC-381A1-01** and country specific 3 wire AC line cord.

Main Features

- Charge only configurations
- Charges five devices or four devices with four spare batteries
- Compatible with all MC2200/MC2700 batteries (in device & in spare charger)
- Desk/Wall/Rack mount options

Additional Accessories for Single Slot Cradle



PWR-BGA12V108W0WW

Level VI AC/DC power supply (brick, Replacement for PWRS-14000-241R)

AC Input: 100-240V, 2.8A

DC Output: 12V, 9A, 108W

Requires: DC line cord and country specific grounded AC line cord.



CBL-DC-381A1-01

DC line cord for running multi-slot cradles from a single Level VI power supply PWR-BGA12V108W0WW, Level VI replacement for PWRS-14000-241R



23844-00-00R

US AC line cord, 7.5 feet long, grounded, three wire for power supplies.



BRKT-SCRD-SMRK-01

Rack/Wall mounting bracket, allows to install any multi-slot cradle on a wall or a 19" IT rack.

Cradle System

Multi-slot Battery Charger



Multi-Slot Battery Charger:

SAC-MC2X-4SCHG-01

4-Slot Battery Charger, Charges Four Spare Batteries (Supports both Standard and Extended Capacity Batteries)

Multi-Slot Battery Cradle Requires: Power supply **PWR-BGA12V50W0WW**, DC cord **CBL-DC-388A1-01** and country specific 3 wire AC line cord.

Main Features

- Charge only configurations
- Charges four spare batteries
- Compatible with all MC2200/MC2700 batteries

Additional Accessories for Single Slot Cradle



PWR-BGA12V50W0WW

Level VI AC/DC power supply (brick, replacement for PWR-14000-148R)

AC Input: 100-240VAC, 2.4A

DC Output: 12VDC, 4.16A, 50W

Requires: DC line cord and country specific grounded AC line cord.



CBL-DC-388A1-01

DC line cord for running the single slot cradles or battery chargers from a single Level VI power supply PWR-BGA12V50W0WW, Level VI replacement for PWR-14000-148R.



Various Part Numbers – please contact your Zebra sales associate for more details

AC line cord, 7.5 feet long, grounded, three wire for power supplies.

Batteries



Spare Batteries – Standard / Extended Capacity



BTRY-MC2X-35MA-01

PowerPrecision Lithium Ion battery pack, **3500mAh**, provides 17 hours of use at room temperature before requiring a recharge

Pack of 10: BTRY-MC2X-35MA-10



BTRY-MC2X-49MA-01

PowerPrecision Lithium Ion battery pack, **4900mAh**, extended capacity provides over 23 hours of use at room temperature before requiring a recharge

Pack of 10: BTRY-MC2X-49MA-10

Note: 4900mAh battery pack is denoted by the battery plus icon to differentiate from the 3500mAh standard battery

Data Capture



Attachable Trigger Handle



TRG-MC2X-SNP1-01

Attachable trigger handle

- Quickly converts your device into a gun style for data capture intensive applications.
- The handle easily snaps onto the device, no tools required.
- 2-pin electrical interface provides fast data capture.
- Does not block camera or any other feature
- Works in all charging cradles with handle attached
- Optional wrist strap (SG-MC2X-HSTRPH-01), rubber boot (SG-MC2X-RBH2-01) and holster (SG-MC3021212-01R) available

Screen Protector



MISC-MC2X-SCRNPT-01

Tempered Glass Screen Protector - 5 Pack

- Protects displays on both MC2200 and MC2700

** Please note this accessory is a consumable and may require replacement during the device's lifespan.*

Soft Goods



Brick and Gun Configurations

Carrying Solutions



SG-MC2X-HLSTR-01

Fabric holster, secures to a belt or a shoulder strap – belt clip included.

The shoulder strap can be purchased separately.

** Please note this accessory is a consumable and may require replacement during the device's lifespan.*



SG-MC3021212-01R

Fabric holster, secures to a belt or a shoulder strap..

Requires belt or shoulder strap ordered separately.

** Please note this accessory is a consumable and may require replacement during the device's lifespan.*

Protective Boots



SG-MC2X-RB1-01

Rubber boot for terminal only, protects the device from wear and tear.

** Please note this accessory is a consumable and may require replacement during the device's lifespan.*



SG-MC2X-RBH2-01

Rubber boot for terminal with trigger handle, protects the device from wear and tear.

** Please note this accessory is a consumable and may require replacement during the device's lifespan.*

Straps



SG-MC2X-HSTRP-01

Spare Hand Strap for Terminal without Trigger Handle

** Please note this accessory is a consumable and may require replacement during the device's lifespan.*



SG-MC2X-HSTRPH-01

Hand Strap for Terminal with Trigger Handle

** Please note this accessory is a consumable and may require replacement during the device's lifespan.*



Brick-only



Gun-only

Brick and Gun Configurations

Shoulder Strap and Belt

**58-40000-007R**

Shoulder strap
Universal shoulder strap for
fabric holster.

** Please note this accessory is a consumable and may require replacement during the device's lifespan.*

**11-08062-02R**

Belt for holster
Universal belt for fabric
holster.

** Please note this accessory is a consumable and may require replacement during the device's lifespan.*

Audio Accessories

Bluetooth Headset



HS3100-OTH

HS3100 Rugged Bluetooth Headset Over-The-Head
Headband includes

- HS3100 Boom Module
- HSX100 OTH Headband Module

Other Accessories

Country specific AC grounded line cords

Part Number	Description
23844-00-00R	AC line cord, 7.5 feet long, grounded, three wire. Associated Country: US
50-16000-217R	AC Line Cord, 1.9M, grounded, three wire, AS 3112 plug. Associated Country: Australia, New Guinea
50-16000-218R	AC Line Cord, 1.8M, grounded, three wire, NEMA 1-15P plug. Associated Country: Japan
50-16000-219R	AC Line Cord, 1.8M, three wire, grounded BS1363 plug. Associated Countries: Hong Kong, Iraq, Malaysia, Singapore, United Kingdom
50-16000-220R	AC Line Cord, 1.8M, grounded, three wire CEE 7/7plug. Associated Countries: Europe, Abu Dhabi, Bolivia, Dubai, Egypt, Iran, Korea, Russia, Vietnam
50-16000-256R	AC Line Cord, 1.8M, grounded, three wire, CEE7/7 plug. Associated Country: Korea
50-16000-257R	AC Line Cord, 1.8M, grounded, three wire, IEC 60320 C13 plug. Associated Country: China
50-16000-669R	AC Lind Cord, 1.9 M grounded, three wire, BS 546 Plug. Associated Country: India
50-16000-671R	AC Line Cord, 1.8M grounded, CIE 23-16 plug. Associated Country: Italy
50-16000-672R	AC Line Cord, 1.9M grounded, three wire, S132 Plug. Associated Country: Israel
50-16000-727R	AC Line Cord, 1.9M grounded, three wire. Associated Country: Brazil

Country specific wall adapters

Part Number	Description
PWR-WUA5V12W0WW	Level VI power supply (wall adapter) 100-240 VAC, 5V, 2.5A with adapter plugs for world-wide use
PWR-WUA5V12W0AU	Level VI power supply (wall adapter) 100-240 VAC, 5V, 2.5A with Australia plug
PWR-WUA5V12W0BR	Level VI power supply (wall adapter) 100-240 VAC, 5V, 2.5 A with Brazil plug
PWR-WUA5V12W0CN	Level VI power supply (wall adapter) 100-240 VAC, 5V, 2.5A with China plug
PWR-WUA5V12W0EU	Level VI power supply (wall adapter) 100-240 VAC, 5V, 2.5A with Europe plug
PWR-WUA5V12W0GB	Level VI power supply (wall adapter) 100-240 VAC, 5V, 2.5A with UK plug
PWR-WUA5V12W0IN	Level VI power supply (wall adapter) 100-240 VAC, 5V, 2.5A with India plug
PWR-WUA5V12W0KR	Level VI power supply (wall adapter) 100-240 VAC, 5V, 2.5A with Korea plug
PWR-WUA5V12W0US	Level VI power supply (wall adapter) 100-240 VAC, 5V, 2.5A with US plug

