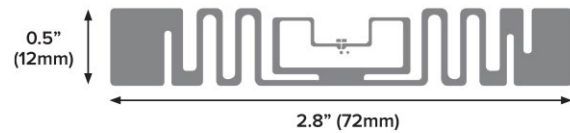


# BoingTech™ BT0573 U8 Inlay

## General purpose 72 mm wide inlay

A successful RFID solution requires high-performing thermal labels and inlays. As the global leader in RFID technologies offering end-to-end RFID solutions, Zebra is your trusted expert in all things RFID. Certified by Zebra, the BoingTech BT0573 U8 inlay provides high-sensitivity and longer read ranges for industry-leading performance. BoingTech BT0573 U8 inlays are pre-tested to work seamlessly with Zebra printers and readers to help maximize the benefits of RFID across your enterprise.



### High Sensitivity for Longer Read Ranges

Designed with a high-sensitivity NXP UCODE 8 chipset, the BoingTech BT0573 U8 inlay delivers read ranges up to 18 m resulting in over 50% further than other inlays in its class.

### Exceptionally Consistent and Consistently Exceptional Custom RFID Labeling Solutions

With our state-of-the-art presses and RFID manufacturing equipment, we can create a customized RFID labeling solution to meet the unique requirements of your application. We use the same material from order-to-order, and never substitute materials, to safeguard consistency and quality.

### Zebra Certified to Ensure Industry-Leading Performance and Low Instance of Printer Voids

Zebra's Supplies R&D team has characterized read range performance on our Voyantic Tagformance test equipment to measure performance on a variety of surfaces and orientations. Inlay positions have been tested in industrial, desktop, and mobile RFID printers so that the most effective position is matched for the printer being used, resulting in the fewest printer voids. Our combined expertise in RFID printer and label manufacturing gives you the assurance the inlay will be produced to ISO 9001 processes with consistent inlay placement.

### Unmatched Expertise in RFID

Zebra offers RFID solutions customized for your application with the highest-performing inlays and chips. We have played a central role in pioneering RFID technologies and defining global standards since the mid-1990's, when smart-label technology first appeared. We were recognized as the #1 RFID brand by the 2018 RFID Journal's Brand Report. And we hold more than 575 RFID patents and numerous industry firsts in RFID.

**BoingTech BT0573 U8 Inlay—High-performance general-purpose inlay.**  
**For more information on the Zebra's RFID Labeling Solutions,**  
please visit [www.zebra.com/rfidlabels](http://www.zebra.com/rfidlabels)

# Specifications

## Technical Information

Chip	NXP UCODE 8
EPC memory	128 bit
User memory	N/A
TID	96 bit factory locked (48 bit unique)
Read Sensitivity	-23 dBm
Write Sensitivity	-18 dBm
RFID Standards	EPC Gen2v2
Read Range	Up to 18 m

### Theoretical Read Range: ETSI (865-868 MHz)\*

Air	10 m
Cardboard	14 m
Fiberglass	16 m
Glass	11 m
PTFE	18 m
Polyacetyl	12 m
PVC	13 m
Rubber	12 m

### Theoretical Read Range: FCC (902-928 MHz)\*

Air	15 m
Cardboard	13 m
Fiberglass	15 m
Glass	8 m
PTFE	14 m
Polyacetyl	14 m
PVC	16 m
Rubber	8 m

## Testing and Compliance

All inlays certified by Zebra have been pre-tested with Zebra printers and readers.

## Product Performance and Suitability

Storage Temperature	-55°C/+125°C
Operating Temperature	-40°F to 158°F (-40°C to 70°C)

## Material Testing in End Application

The information contained in this document is to be used for guidance only and is not intended for use in setting specifications. All purchasers of Zebra products shall be solely responsible for independently determining if the product conforms to all requirements of their unique application.

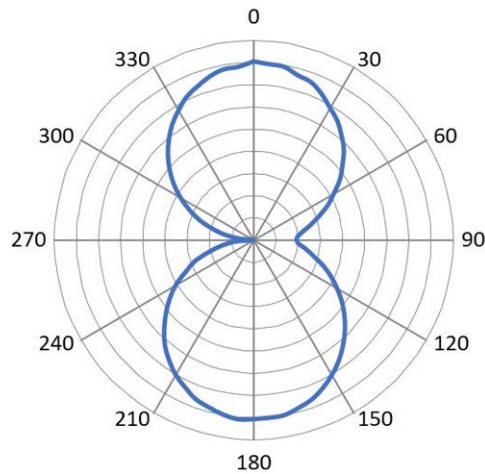
## Footnotes

\*Theoretical read range data is meant to be directional. Actual performance will depend on your application and environment. Testing is recommended.

## Radiation Pattern

\*\*Read range drops to 12% of maximum when inlay is perpendicular (90° and 270°) to the reading antenna. To learn more about Radiation Pattern visit [www.zebra.com/rfidlab](http://www.zebra.com/rfidlab)

### RADIATION PATTERN\*\*



## Markets and Applications

### Transportation and Logistics

- Case/pallet labeling

### Warehousing

- Work-in-process

### Retail

- In-store retagging

### Healthcare

- Sample tracking

### Government

- Asset tagging



**NA and Corporate Headquarters**  
+1 800 423 0442  
inquiry4@zebra.com

**Asia-Pacific Headquarters**  
+65 6858 0722  
contact.apac@zebra.com

**EMEA Headquarters**  
zebra.com/locations  
contact.emea@zebra.com

**Latin America Headquarters**  
zebra.com/locations  
contactme@zebra.com