



**ZEBRA**



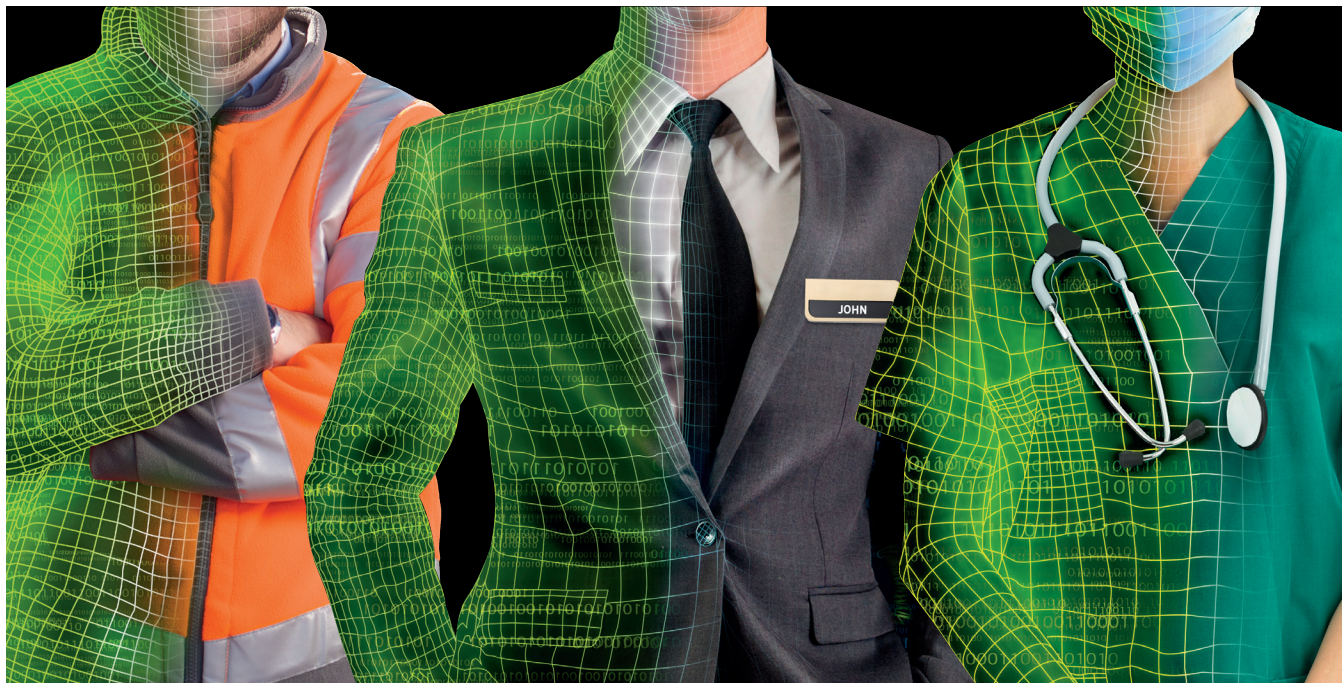
## Join the Mobility Revolution with Zebra for Android™

THE WORLD'S LARGEST PORTFOLIO OF  
ENTERPRISE-READY ANDROID DEVICES.

# Bring the Mobility Revolution to Your Workforce

Billions of people worldwide can't be wrong. Android is the world's most popular, dominant mobile operating system, found on four in every five consumer handhelds.

So why not take advantage of the familiarity it offers? With many of your people using Android already, it's an easy step to introduce it in the workplace.



## Why stop there? Go further and add Zebra solutions for even greater results.

- Revolutionise productivity, efficiency and mobility with a comprehensive portfolio of apps and functions that you can customise to meet your business needs
- Increase security with our built-in Mx Technology that adds extra protection for use in even the most demanding of environments
- Add enterprise-class hardware that's tough, strong and designed to meet the specific needs of different sectors

## Win Over the Customer: THE RETAIL MOBILITY REVOLUTION

Connect operations at every opportunity along the supply chain – and across channels. Not only can staff work more efficiently, but you can also build a more consistent customer experience.

- Improved collaboration with better communication among staff, using voice or text
- Unrivalled visibility with speedy customer response through fast price and inventory checks
- Greater customer engagement with easier self-scanning, faster check-outs and tailored promotional offers
- Easier payment systems with mobile payments and coupon-scanning, even on a phone



# Zebra Devices for Android in Retail



## TC51 Touch Computer

Enable great customer service and empower your teams with a single, sleek device.

- Voice and data communications – including VoIP ready audio system
- HD display with large 5-inch screen
- Seamless roaming, best-in-class Wi-Fi
- Fast and easy, world-class scanning
- Customisable, rugged protective case
- Long-lasting warm-swappable battery

## TC70 Touch Computer

Rugged device, designed for reliable data entry and capture.

- Longer-range barcode scanning
- Gorilla glass touchscreen
- Real-time visibility of purchase patterns – for instant promotions
- Tough industrial-grade connectors and sealing

## MC18 Mobile Computer

Self-service personal shopper provides easy way for customers to self-scan items and shop faster.

- First time, every time barcode capture
- Toughened for all-day use
- Fast-charging, high-capacity battery
- Flexible, 3-in-1 space-saving cradle
- Enables targeted marketing with instant promotions

## MC40 Mobile Computer

Hand-held device has consumer styling with the processing power, memory and fast wireless connection that retailers need today.

- Fast, accurate capture of 1D and 2D barcodes
- Touch-sensitive display
- Integrated high-resolution 8MP colour camera

## MC3200 Mobile Computer

Redefine productivity and back office inventory management efficiency.

- New level in cycle counting, put-away, returns processing and voice-directed picking
- 3 lightweight models for all day comfort to every task
- Choice of most advanced 1D laser or 1D/2D Imager



# Put Productivity on the Fast Track: The Manufacturing Mobility Revolution



The speed of automation in manufacturing means having a new kind of handheld device, that's ready to cope with the impact of Industry 4.0 and emerging technologies. How do you get the control you need at every stage, from the moment components arrive to delivery of the finished product?

With Zebra devices for Android you have the technology to connect your teams, improve data capture and track your assets more efficiently.

- Shorten production time by scanning whole documents in one go, single-click capture of barcodes and speech-directed workflow
- Improve teamwork sending a group voice or text message, using geo-location to locate members
- Increase productivity and shorten training times with all touch terminal emulation

## ZEBRA DEVICES FOR ANDROID IN MANUFACTURING

### TC8000 Touch Mobile Computer

This innovative design helps workers carry out everyday tasks more efficiently – on average saving 14%\* per worker compared with traditional devices, equivalent to an extra hour of productivity for each worker, every day.

- Light, ergonomic design, up to 33% lighter than traditional models
- Revolutionary screen faces user during scanning
- 40% faster typing, 60% fewer errors with all-touch keypad
- No downtime with warm-swappable battery
- Wearable or mounted scanning

### MC67 Mobile Computer

This rugged powerhouse of a device is ideal for workers on-the-go, whether fixing equipment or accessing backend system information.

- Rugged, compact, key-based mobile computer
- High-speed cellular and wireless connections
- Scans practically any barcode
- Use video and photos for real-time support

### MC9200 Mobile Computer

Industry-leading device for gold-standard mobility in inventory and asset management in manufacturing plants.

- Proven rugged design withstands drops, extreme temperature changes, dust and splashes
- Most scan engine options, including extended range imager
- Application-specific, field-swappable keypads





# Connect to Better Care: The Healthcare Mobility Revolution



Real-time visibility enables staff and administrators to make informed decisions that deliver better outcomes and enhance patient safety.

With Zebra devices for Android you can:

- Improve communication with one-click access to a whole team in an emergency
- Get just-in-time information with access on the go to the latest medical data such as test results
- Save time with faster, more accurate data processing
- Meet the demands of medical environments as devices are built to withstand drops, knocks, water and constant sanitising



## ZEBRA DEVICES FOR ANDROID IN HEALTHCARE

### TC51-HC Touch Computer

Pocket-sized mobile computer allows rapid access to patient data and communications, at critical moments.

- 5-inch touchscreen works when wet and with gloves
- Hi-res 13 MP camera for capturing documentation and front-facing camera for tele-health video calls
- Advanced point-and-shoot scanning
- Disinfectant-ready and protected against the odd tumble, drop or splash

### MC40-HC Mobile Computer

Makes it simple to access patient and medical data on the move and deliver better care.

- First time, every time barcode scanning, ensures accuracy in medication administration and specimen collection
- Fully-featured but pocket-sized
- Large 4.3-inch touch-only display to show information-intensive apps, such as health records
- Disinfectant-ready with enterprise-class durability

# Delivering the Transportation and Logistics Mobility Revolution



Immense competition and a “need it now” culture mean the pressure is on transportation and logistics companies to improve delivery time and service levels, while reducing costs. Central to that is good communications.

With Zebra devices for Android your people in the field can:

- Deliver faster and get in-and-out quick, with one-click barcode capture
- Connect to back-end systems without having to return to base
- Use one device for everything, from barcode capture to video and photo evidence and hands-free calls – even card payments
- Coordinate with their team through group messaging and provide support through tracking and monitoring



## ZEBRA DEVICES FOR ANDROID IN TRANSPORTATION AND LOGISTICS

### TC56 Touch Computer

Rugged but light, with large 5-inch display and great outdoor visibility.

- Quick and easy scanning
- Best-in-class connectivity for voice and data
- Unmatched processing power
- Long-life batteries can be swapped out for uninterrupted working

### TC75 Touch Computer

Rugged and ready for life on the road.

- Most advanced scan engine with longer range data capture
- Manages routing, scheduling, PODs and much more
- Wi-Fi and 4G LTE to keep connected
- Multi-input options include stylus, finger or gloved finger

### MC67 Mobile Computer

All-in-one rugged device. Provides field workforce with tools to access information in business systems and do their job more effectively.

- Choice of touchscreen or keypad data entry
- Robust build quality
- Still and video images, document capture and phone calls

## See a Bigger Picture



When you need more screen space to work, the ET55 tablet computer provides customisable flexibility for just about any job or environment.



The consumer-style tablet, ruggedised for the harshest workplace, makes work easier from stock management to customer assistance – for salespeople, delivery drivers and plant technicians.

- Exceptional battery power
- Expansion back with one-handed scanning options
- Warm-swappable batteries for expansion back provide 24 / 7 use
- Rugged frame handles 6 ft. drop
- Mounts for desktops, trucks and forklift
- Designed to resist drops, spills, water, snow and dust

### Retail • Manufacturing • Transportation and Logistics

**Start the mobility revolution in your workplace.**  
Find out more about Zebra devices for Android, visit [zebra.com/android](http://zebra.com/android)



**NA and Corporate Headquarters**  
+1 800 423 0442  
[inquiry4@zebra.com](mailto:inquiry4@zebra.com)

**Asia-Pacific Headquarters**  
+65 6858 0722  
[contact.apac@zebra.com](mailto:contact.apac@zebra.com)

**EMEA Headquarters**  
[zebra.com/locations](http://zebra.com/locations)  
[contact.emea@zebra.com](mailto:contact.emea@zebra.com)

**Latin America Headquarters**  
+1 847 955 2283  
[la.contactme@zebra.com](mailto:la.contactme@zebra.com)