



# RFID Portfolio

See it All. Get it All. Only from Zebra.





# RFID Simplicity Starts Here.

**You're under pressure to work at a brisker pace.** Your online shoppers expect orders to be stocked in your store and quickly found by your staff. Patient care requires instant location of medication, and flawless fulfillment depends on real-time inventory tracking. How can you satisfy customers and speed up processes? Radio Frequency ID (RFID) technology revs up operations, by automatically locating your tagged objects at greater speed, accuracy and volume than traditional methods.

**But there's more to implementing RFID than you might realize.** Unless properly engineered, metals and liquids can play havoc with RFID. Reader and tag frequencies can collide. And tags not made for your environment can fade or fall off. So how do you find the ideal solution, without getting blindsided by extra costs and complexity?

**That takes guidance from those with a big picture view** — experts who have engineered every aspect of RFID, from readers to antennas, from printers to software, supplies and service for every type of industry. Count on Zebra to keep you on track. With our expertise and extensive RFID portfolio, you'll have a cohesive solution made for your particular needs. You can focus on business, instead of technology, because every component talks to one another and to your existing systems. You can keep an eye on what's on the shelf and on the move, because RFID signals won't get lost or crossed, and tags will stay put and legible.

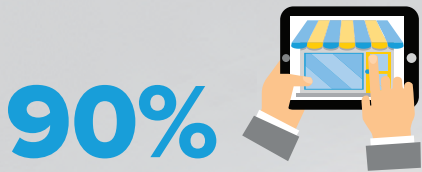
What about integration, management and app development? You're covered. **Gain a performance edge shopping in one place and from one RFID portfolio — Zebra's.**



## Intriguing Retail Anecdotes

Deeper Visibility. Better Business Insight. Smarter Retail Decisions.

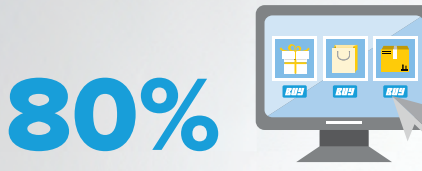
From boosting retailers' sales to minimising out-of-stocks/overstock situations, this RFID retail infographics seeks to explain the benefits of implementing RFID solutions and how you can potentially benefit from it as a retailer.



90%

of retailers' plan to have an **omni-channel practice** in place by 2021 (eg. BOPIS or Click & Collect)

> eliminates pick declines to reduce excess costs



80%

of decision makers and **74% of associates** say tech-equipped sales associates would **improve customer service**<sup>2</sup>.

**Brick-and-mortar stores** will still be the predominant revenue channel by 2020; they are responsible for upward of



76%

of revenue.



USD \$1.75 trillion

Retailers worldwide lose USD\$1.75 trillion<sup>4</sup> annually from **overstocks, OOS, and needless returns**.



25%

of retailers consider omni-channel initiatives, including **Click & Collect**<sup>3</sup>, to be a top consumer-facing priority.



40%

By 2021, 40% of in-store sales are expected to be influenced by the Internet.<sup>3</sup>



From 2016 to 2021, **web-influenced sales** will grow at a compound annual growth rate (CAGR) of

4.6%



20%

At Lord & Taylor, audits revealed that with its manual inventory system, up to 20% of all merchandise in certain categories **might be missing** from the sales floor during a given week.



Find out more about how RFID can help you deliver a seamless customer shopping experience. <https://connect.zebra.com/ap-rfid-solutions>

### Sources:

- <sup>1</sup> 'Retail Vision Study', Zebra Technologies
- <sup>2</sup> '2019 Shopper Study', Zebra Technologies
- <sup>3</sup> Research from IHL Group
- <sup>4</sup> 'State of Retailing Online', NRF/Forrester



# Zebra Handheld and Hands-Free RFID Readers

Out-of-Sight is Now Never Out of Reach.

**Track, trace and tally assets in real time.** Choose from sleek handhelds, hands-free devices, rugged form factors and RFID sleds. Below are just a few ways to easily and accurately handle RFID.



# Zebra Fixed Readers, Antennas and Setup Wizard

Find What You Seek in RFID Solutions.

Make sure the right asset is in the right place at the right time with Zebra's complete RFID portfolio — the deepest and widest in the industry. You'll find **setup is easy with our intuitive wizard**.



## DS9908R RFID / 1D / 2D Reader

Handle More Tasks from a Single Device

Close the supply chain loop. Read RFID-tagged merchandise at the point of sale for up-to-the-minute inventory tracking. The DS9908R is a hybrid handheld / hands-free scanner that offers best-of-breed barcode scanning with RFID reading capabilities in a single platform.



## MC3390R RFID Reader

Zero in on Distant Items with Zero Effort

Accurately read tags up to 60 feet away — 200% farther than the next leading competitor. Ease migration with the intuitiveness of Android™ and the flexibility of keypads.



## RFD2000 Sled RFID Reader

Turn Zebra's TC20 into an RFID Reader

Add UHF RFID tag reading, writing and locating capabilities to the RFID-ready version of Zebra's TC20 touch mobile computer. Compact and lightweight, the sled delivers all day comfort and sleek styling for design-conscious stores.



## MC3330R RFID Reader

Less Trekking, More Tracking

No need to walk to locate and count items. Let the data come to you. The MC3330R offers the industry's best read rates and accuracy. Plus, it combines the ease of Android with the functionality of keypads for effortless migration.



## RFD8500 RFID / 1D / 2D Sled

Turn Your Computer into an RFID Reader

Pair the Bluetooth-enabled RFD8500 Sled with Zebra's TC51, an Android or iOS smartphone or a laptop or desktop computer, and you're ready to read RFID tags. The RFD8500



## Fixed RFID Readers

No need to sacrifice style for functionality. Our readers are built powerful, whether they have a polished exterior for customer-facing environments or a rugged exterior for tough workspaces.



## FX9600 Fixed RFID Reader

More Rugged, More Industrial Than Before



## FX7500 Fixed RFID Reader

The Small Interior Reader, Big on Speed and Accuracy



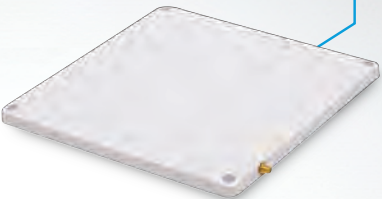
## ST5500 RFID Transition Reader

Know What's Entering and Exiting Your Premise



## RFID Antennas

Quickly and accurately track inventory and assets. Our robust antennas offer the high performance and range needed for high traffic and precision.



## AN510 RFID Antenna

Ultra-Rugged and Low Profile for Use Indoors and Outdoors



## RFID Setup Wizard 123RFID

Make RFID Deployments as Easy as 1, 2, 3

You don't have to be an expert to setup and optimize Zebra RFID readers. Our free, intuitive wizard presents easy-to-understand options in drop-down menus, radio buttons and sliders. Use built-in help and how-to-videos to find answers to your questions.





# Zebra RFID Printer Encoders

Accurate and Scalable RFID Encoding.

Your solution depends on reliable data. Zebra offers the industry's widest range of printers that accurately encode RFID labels, tags and cards where and when you need them. Build your solution on RFID data you can trust.



## ZT600 and ZT400 Series Industrial Printers

Intelligent and Industrial Brawn

Rugged environments. Demanding RFID applications. Cloud connectivity. Field upgradable. These printers keep your operations running 24/7.



## ZXP Series 7 Card Printer

High Operational Efficiency

Produce great looking cards with printers made for the highest throughput and best reliability. Simultaneously print and encode cards.



## ZQ520 Mobile Printer

For the Rough and Tumble World

This rugged mobile printer is built to withstand repeated drops, spills and shocks. Yet, it's friendly to workers, even those using gloves, and to IT, when it comes to integration and management.



## ZD500R Desktop Printer

Bring RFID Printing to Your Desktop

Compact and easy-to-use, this printer delivers intelligence and advanced features for convenient, simple operation.



# Zebra Certified Supplies

The Perfect Match for Your RFID Printer.

Using inlays from leading manufacturers to meet your needs, Zebra offers 40+ RFID labels in stock and custom solutions in a variety of sizes and materials for a wide range of applications. Designed and tested with Zebra printers and RFID readers, our Certified Supplies ensure high performance.

## General Purpose

Paper and synthetic labels

- Designed for use with standard RFID readers
- Best for non-metallic surfaces, plastics or corrugate

## Advanced

- Paper and synthetic labels that offer a higher level of legibility than our general purpose labels

## Specialty

- Designed for asset tagging on metal surfaces or for liquid-filled containers

# Exceptionally Consistent. Consistently Exceptional.

## Outstanding Quality



Materials never substituted or compromised

## Superior Service

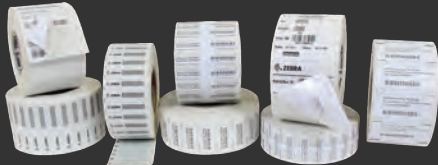


Expert consultation available

## Outstanding Experience



30+ years of engineering thermal printing supplies



## Zebra Signature Services

Data insights from the technologies at the edge of your network can open up a world of new commercial opportunities. But without the right skills or resources, you could miss out on the full benefits. **Zebra Signature Services accelerate your ability to unlock intelligence** from your data, so you can run your business more productively.

## Zebra OneCare™ Support Services

Constant, peak performance. That's the upside of protecting your investment with our support services. You eliminate the unexpected disruptions and unbudgeted repair expenses. Whether you need comprehensive coverage, assistance with technical issues, software updates or on-site support, there's a Zebra OneCare Support Service that's right for you\*.

Choose from three service levels:

Zebra OneCare Essential	Zebra OneCare Select	Zebra OneCare Premier**
<ul style="list-style-type: none"><li>Comprehensive repair services</li><li>Software support</li><li>8x5 technical support (plus 24x7 online support)</li><li>3-day repair turnaround service</li><li>Device Diagnostics** and Support Dashboard***</li></ul>	<ul style="list-style-type: none"><li>All the features of Essential Service</li><li>Next business day advanced device replacement</li><li>Commissioning services (app loading and configuration management)</li><li>24x7 helpdesk support</li></ul>	<ul style="list-style-type: none"><li>All the features of Essential and Select Services</li><li>Operational Visibility Service</li><li>Software release management</li><li>Service delivery manager</li><li>Managed device service desk</li></ul>

## Zebra OneCare™ Visibility Services

Go beyond traditional repair services. See the location, status and full state of critical assets to preempt problems, optimize utilization and amplify performance.

### Asset Visibility Service (AVS)

Gain at-a-glance visibility into asset inventory and the health of all your Zebra mobile computers and Link-OS® networked printers with this quickly activated subscription-based service. No on-site equipment or MDM / EMM needed.

### Operational Visibility Services (OVS)

You can't manage what you can't see. OVS solves that with the advanced insight an EMM solution alone cannot provide. From a single pane of glass on a cloud-based portal, gain deep visibility into your mobile computers and printers with predictive analytics to prevent potential device issues, and help maximize workforce productivity and business efficiency.

# Global Services

Maximize Uptime and ROI.

Whether it's understanding operational utilization, maximizing predictability and uptime or simply unlocking the data of your edge devices, Zebra's portfolio of services provides **expertise every step of the way.**

\* Service feature and/or repair turn-around time may differ by country

\*\* Zebra Mobile Computers only

\*\*\* Zebra Mobile Computers and Scanners only





**Gain Edge-to-Edge Visibility  
with Wall-to-Wall Choices.**

Visit [www.zebra.com/RFID](http://www.zebra.com/RFID)

©2019 ZIH Corp and/or its affiliates. All rights reserved.