




Installation Instruction

Mississauga, Ontario
Canada

DESCRIPTION: DOCUMENT SCANNER MNT INSTALL

NOTE - FOR SUPPLIER/VENDOR:

- THIS DOCUMENT HAS A TOTAL OF 5 PAGES, INCLUDING COVER SHEET
- ALL PAGES, EXCLUDING COVER SHEET, ARE REQUIRED FOR CUSTOMER INSTRUCTION
- **DO NOT** INCLUDE FIRST PAGE IN ASSEMBLY PACKAGE

ITEM GROUP	A00DOC	APPROVALS			DATE	 Mississauga, Ontario		
PRODUCT TYPE	VN0	DRAWN BY: KEN TAYLOR			JAN-12-07	TITLE: DOCUMENT SCANNER MNT INSTALL		
EDR/O STATUS		CHKD. BY: TG	DATE: JAN 25/07	APPROV'D. BY: PB	JAN 25/07			
		PROD. / PROJ. ENG.: SA			JAN 25/07			
		MECH. ENG.: KT			JAN 25/07			
		ELEC. ENG.:						
		OTHER:						
<input checked="" type="checkbox"/>	RELEASED	INSTALLATION INSTRUCTION FORM: U:\engdata\RELEASE\MISSISSAUGA PRODUCTS\DO Blank_Forms\installation instruction_portrait.doc				SIZE A	DRAWING NO. 1616310	REV. A
EDR/EDO NO.: 7796								
						SHEET 1 OF 5		

Installation Instruction for MT3601-10/12 Scanner Right Side

Installation

Step 1: Place the threaded bolts on the Spring Bracket (A) through the long slot on the Angle Bracket (B) and fasten using two M4 hexagon Nuts (C) as shown in **Figure 1**. Torque to 18 lbf-in.

Legend:	
A	Spring Bracket with bolts
B	Angle Bracket
C	4x Nut Hexagon M4 with washer
D	Connecting Plate
E	2x Protective Caps
F	Spring Bracket without bolts
G	8580/90 Vehicle Mount Terminal
H	2x Flat Washer
I	2x Screws M8 x 12 Hexagon
J	Standard Mount Bracket
K	2x Screws M8 x 16 Hexagon

Step 2: Slide the accompanying protective caps (E) over the ends of the Connecting Plate (D) to avoid damage to the scanner or injury to the user. See **Figure 2**.

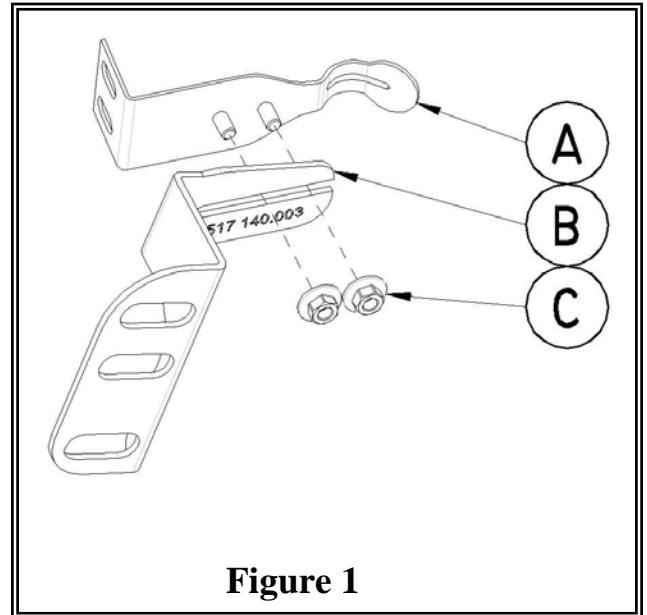


Figure 1

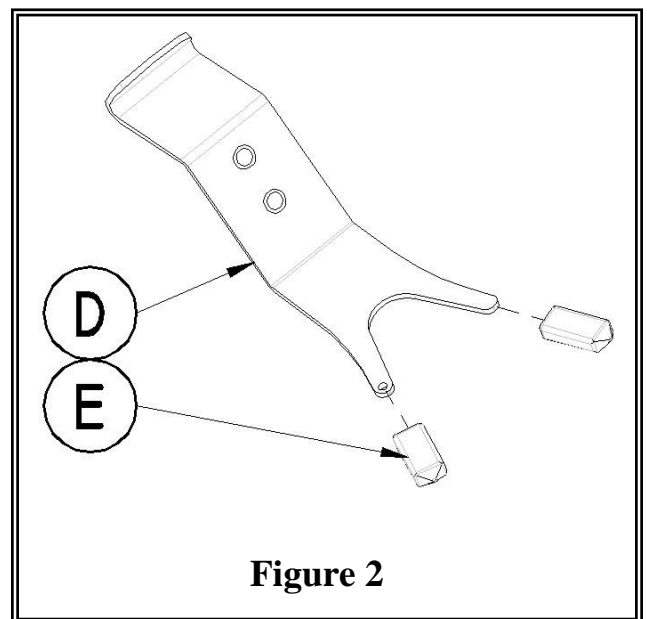
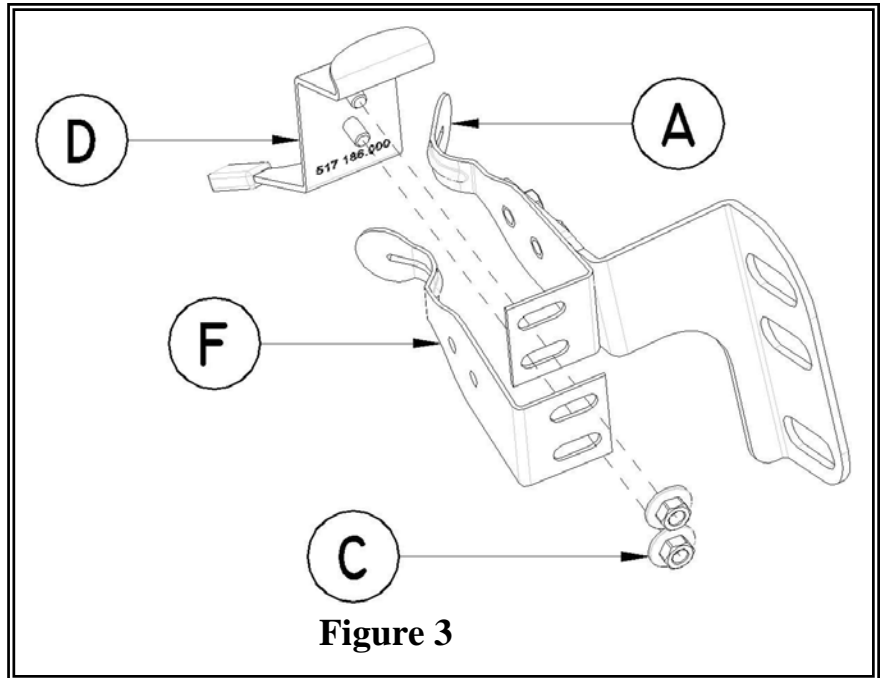


Figure 2

Step 3: Place the threaded bolts on the Connecting Plate (D) into the elongated holes on the Spring Brackets (A) and (F) in position shown. Secure the holder loosely using two M4 hexagon Nuts (C) as shown in **Figure 3**.

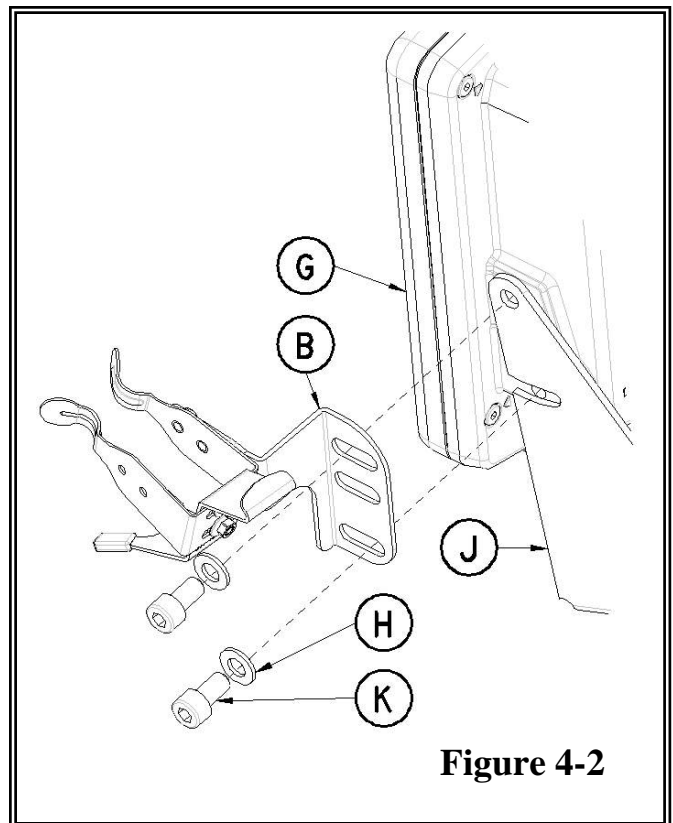
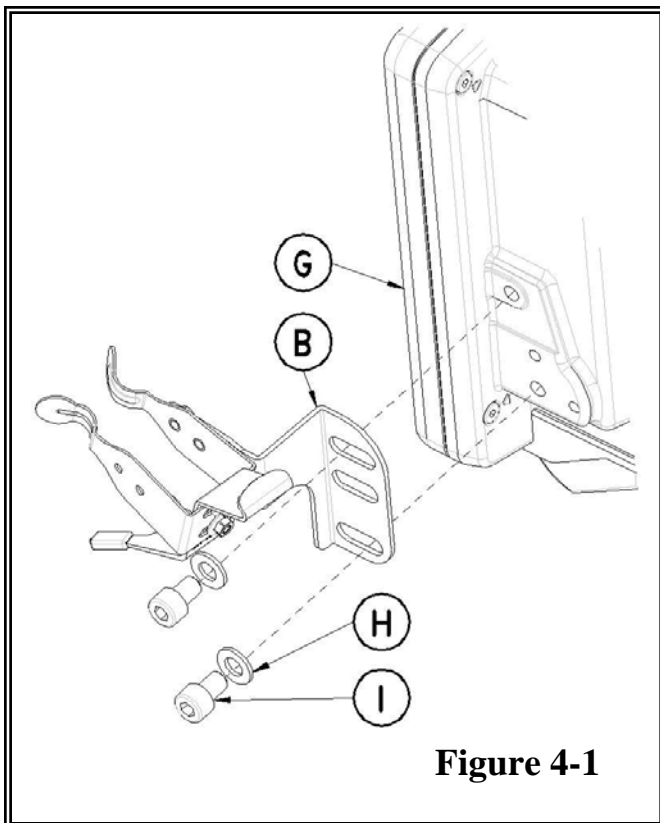
Step 4: Adjust the Spring Brackets (A) and (F) suitably before using the scanner. Temporally place the hand-held scanner into the mounted holder and fasten the two M4 hexagon Nut (C). Torque to 18 lbf-in. **Remove the hand-held scanner from the holder.**



Step 5: Next attach the holder to the 8580/90 terminal (G) as shown in Figure 4-1 or 4-2 * and Flat Washer (H), through the Angle Bracket (B) into Vehicle Mount Terminal (G). Torque to 26 lbf-in.

* For assembly with RAM mount use M8 x 12 mm Screw (I), see **Figure 4-1**.

* For assembly with Standard Mount (J) use M8 x 16 mm Screw (K), see **Figure 4-2**.



Step 6: Connect the hand-held scanner cable to the 8580 / 8590 Vehicle Mount Terminal.



Note: When connecting the hand-hand scanner interface cables to the 8580/90 Vehicle Mount Terminal. The cable cover must be removed and reinstalled correctly. Please ensure you attach the cable cover as per 8580/90 Vehicle Mount User Manual, see section 4.1 complying with Protection Standards IP65. The IP65 protection class can no longer be guaranteed if the cable cover is installed incorrectly.

Appendix A: Support Services and World Wide Offices

Support Services

Psion Teklogix provides a complete range of product support services to its customers worldwide. These services include post-installation technical support and product repairs.

Canada and USA: Technical Support and Repair Services

In Canada and the U.S.A. these services can be accessed through the Psion Teklogix Helpdesk. The Helpdesk coordinates repairs, helps you troubleshoot problems over the phone, and arranges for technicians or engineers to come to your site. Canadian and U.S. customers may receive access to technical support services, ranging from phone support to emergency on-site system support, by calling the toll-free number below, or via our secure web site.

Note: Customers calling the toll-free number should have their Psion Teklogix customer number or trouble ticket number available.

Voice: 1 800 387-8898

Fax: 1 905 812-6304

Web Site: <http://service.psionteklogix.com>

WORLD WIDE WEB

www.psionteklogix.com

International Support

For technical support outside of Canada or the U.S.A., please contact your local Psion Teklogix office.



Psion Teklogix Worldwide Offices and *Service Centers

North America

Canada (corporate office)

* Psion Teklogix Inc.
2100 Meadowvale Blvd.
Mississauga, Ontario L5N 7J9
Canada
Tel: +1 905 813 9900
americas.marketing@psionteklogix.com

Psion Teklogix Inc.
Integration Services Group
Suite 410-13251 Delf Place
Richmond, BC V6V 2A2
Canada
Tel: 1 604 214 7400
americas.marketing@psionteklogix.com

Psion Teklogix Systems
3026 Solandt Road
Kanata, Ontario K2K 2A5
Canada
Tel: 613-592-2592
Fax: 613-592-6778

U.S.A.

* Psion Teklogix Corp.
1810 Airport Exchange Blvd
Suite 500 Erlanger
Kentucky 41018
United States
Tel: +1 859 371 6006
americas.marketing@psionteklogix.com

Mexico

Psion Teklogix S.A. de C.V.
Sierra Mojada 626-2
Col. Lomas Barrilaco
D.F. 11010
Mexico
Tel: +5255 5202 6802
americas.marketing@psionteklogix.com

Europe

Belgium

Psion Teklogix Benelux
Nieuwe Weg 1
2070 Zwijndrecht
Belgium
Tel: +32 3 250 22 00
info@psionteklogix.be

Denmark

Psion Teklogix AB (Denmark)
Branch of Psion Teklogix A.B.
Vesterballevej 4-6
DK-7000 Fredericia
Denmark
Tel: +4576240133
info@psionteklogix.dk

France

* Psion Teklogix S.A. [Aix En Provence]
Parc de la Duranne
135, rue René Descartes
BP 421 000
13591 Aix En Provence
Cedex 3
France
Tel: +33 4 42908809
contact@psionteklogix.fr

Germany

Psion Teklogix GmbH
Jakob-Kaiser-Str. 3
47877 Willich Münchheide
Germany
Tel: +49 2154 92820
info@psionteklogix.de

Italy
Psion Teklogix Srl
Piazza Don Mapelli 75
20099 Sesto S. Giovanni (MI)
ITALY
Tel + 39 02 2412471
Fax + 39 02 24124701
Email: tkxitalia@psionteklogix.com

Spain

Psion Teklogix S.L. Espana
WTC Alameda Park-Poligono Alameda
Placa de la Pau s/n
Edificio no 3, 2 Planta
08940 Cornellà de Llobregat
Barcelona
Spain
Tel: +34 93 475 0220
teklogix@psionteklogix.com

Sweden

Psion Teklogix AB
Stora Badhusgatan 18-20
11 21 Gothenburg
Sweden
Tel: +46 31 339 3090
info@psionteklogix.se

Switzerland

1A Chemin de la Dent D'Oche
Ecublens, VD 1024
Switzerland
Tel: +41 21 694 8010
christophe.francois@psionteklogix.com

United Kingdom

Psion Teklogix (UK) Limited
Bourne End Business Centre
Cores End Road
Bourne End
Buckinghamshire SL8 5AR
United Kingdom
Tel: +44 1628 648800
enquiries@psionteklogix.com

Asia

China

Psion Teklogix (Shanghai)
Wireless Technologies Co., Ltd.
Unit 1507-08
Mingshen Building
No.3131 Kai Xuan Rd
Shanghai 200030
China
Tel: +86 21 5407 1991
ptchina@psionteklogix.com

India

Psion Teklogix Systems India Pvt. Ltd.
V-11, 2nd Floor, Green Park Extn
New Delhi-India, 110016,
phone: +91-11-5107 4500/ 5107
6500 /5107 8500/ 5107 9500
Fax : +91-11-5107 0500
tekind@psionteklogix.com

Japan

Psion Teklogix Japan
Ark Mori Building 12F
1-12-32, Akasaka, Minato-ku,
Tokyo 107-6012
Tel: 813 4360-8272
Fax: 813 4360-8201
Email: kazuo.aoki@psionteklogix.com

Singapore

Psion Teklogix Asia Pacific Pte Ltd
152 Beach Road
#22-03/04 Gateway East
Singapore 189721
Tel: +65 6296 2232
Fax: +65 6296 2322
teksing@psionteklogix.com

Korea

Psion Teklogix Korea
904 Cresyn Tower
8-24 Jamsil-dong
Seocho-kn, Seoul
Korea
Tel: +822 344 51256
Calvin.cho@psionteklogix.com

Middle East

Dubai

Psion Teklogix Dubai
P.O. Box 261659 JAFZ
Sheikh Zayed
Emaar Building #2, Unit 615
Dubai
UAE
Tel: +971 4 368 9412
be.iarocci@psionteklogix.com

Israel

Psion Teklogix Israel
14 Ze'elon St. Unit 47
Or-Yehuda
Israel 60407
Tel: +972 3 634 8001
guy.perry@psionteklogix.com

Africa

South Africa
Psion Teklogix South Africa
Proprietary Limited
Grd Flr East, Waterfall Edge
Phase 2, Waterfall Park
Bekker Rd.
Midrand 1685
South Africa
Tel: +2711 8057440
sales@psionteklogix.co.za
8105

* Authorized Service Center