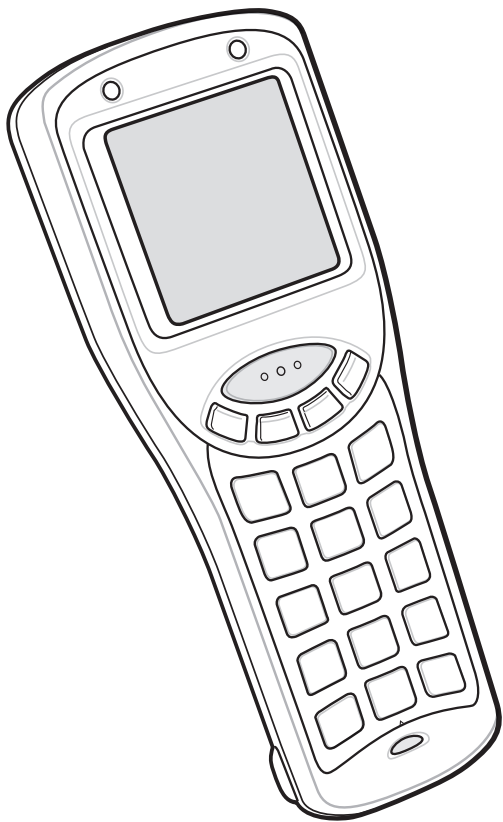


# MC1000

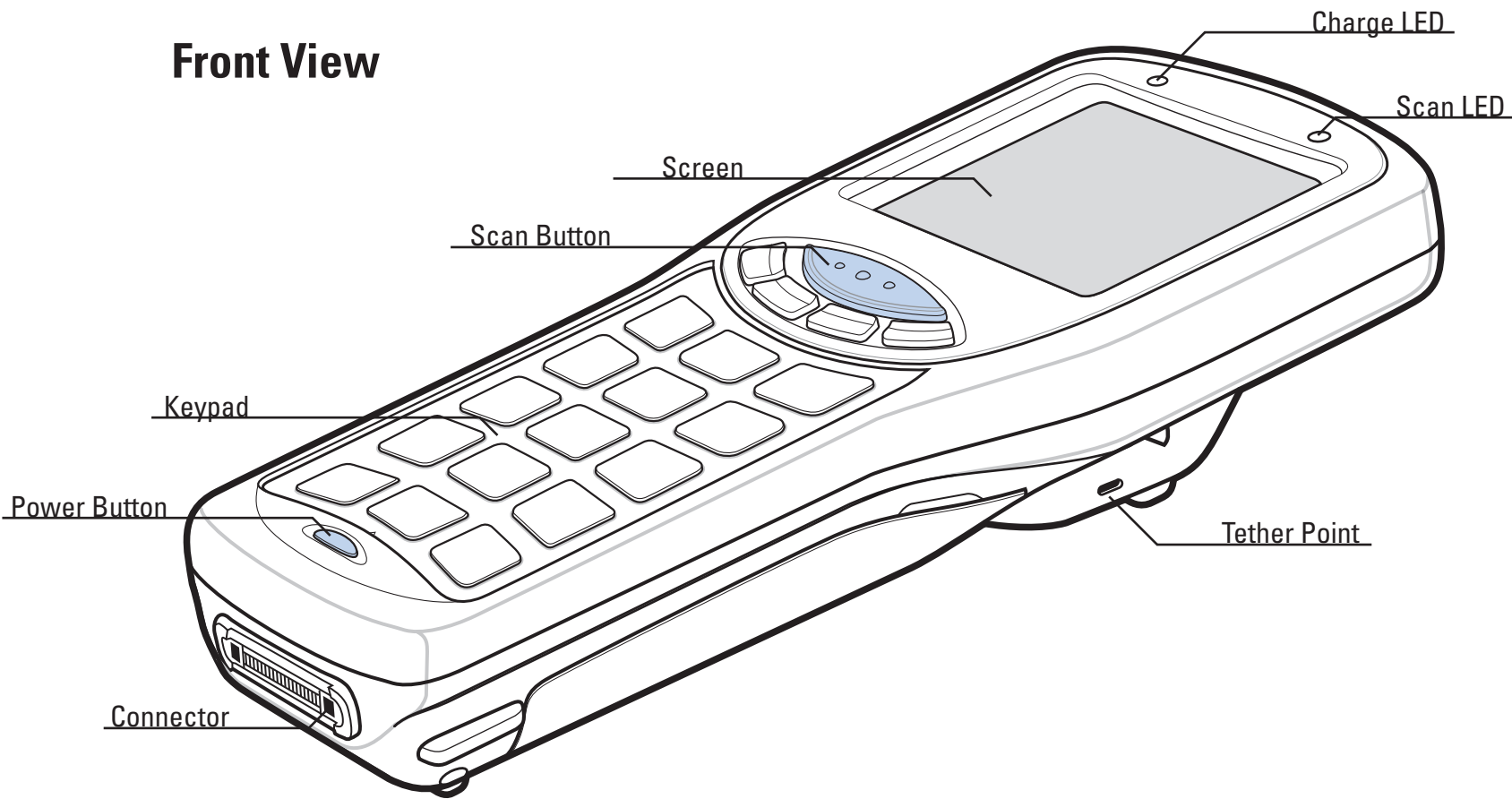
## Quick Start Guide

<http://www.zebra.com> See User Guide for more information

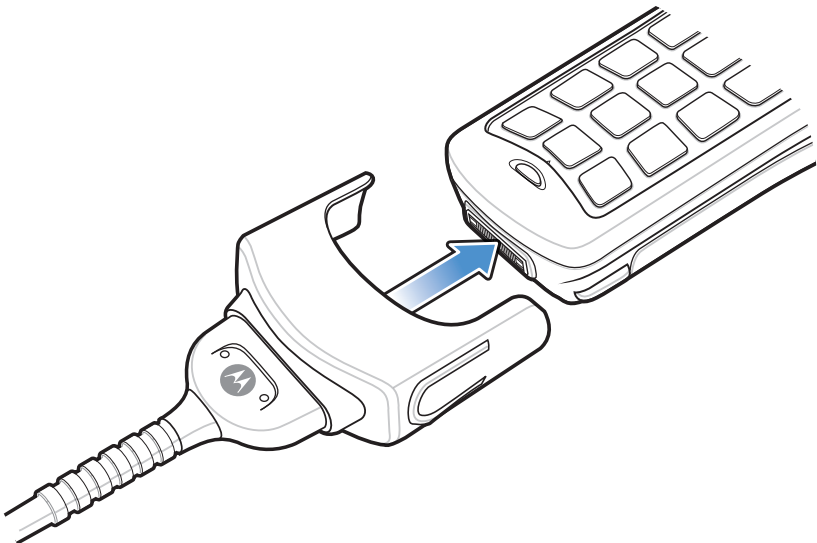
POST IN WORK AREA



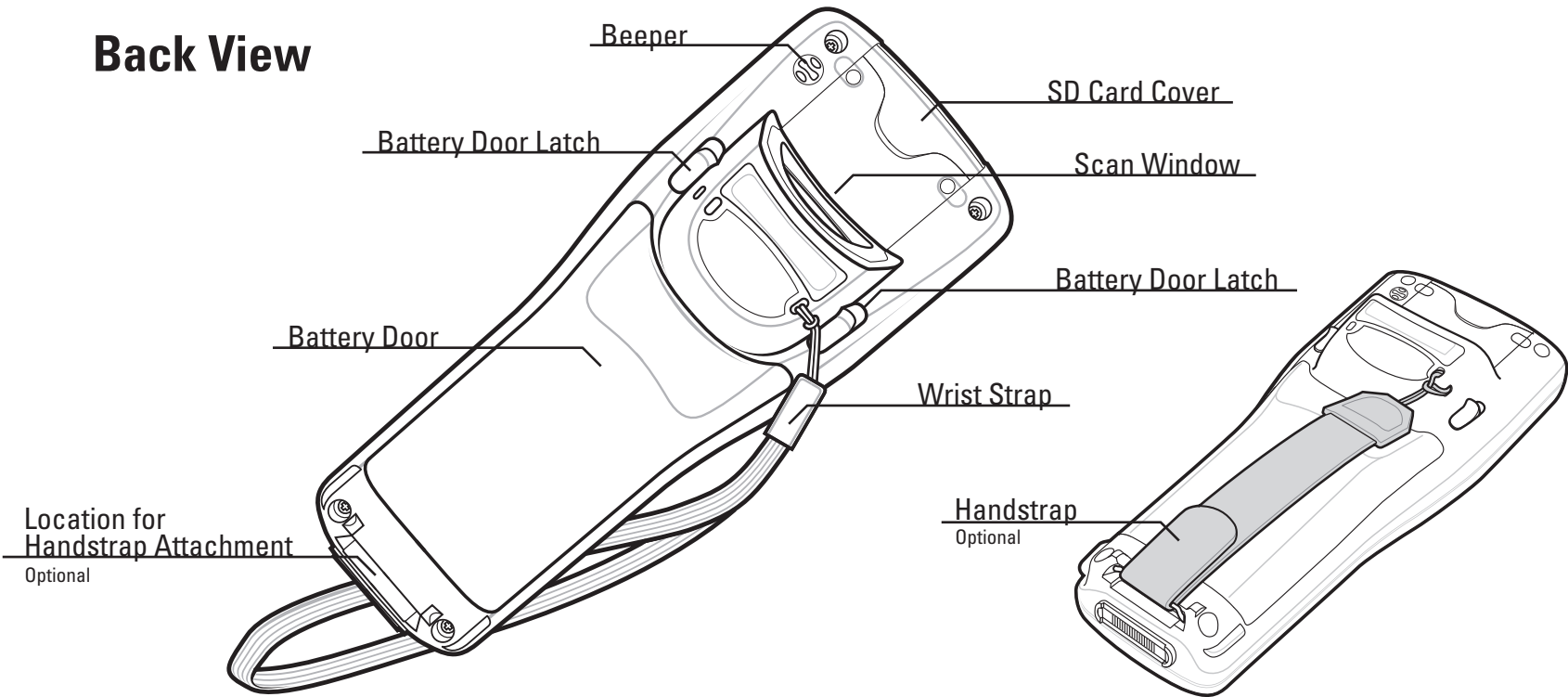
### Front View



### Cable Installation

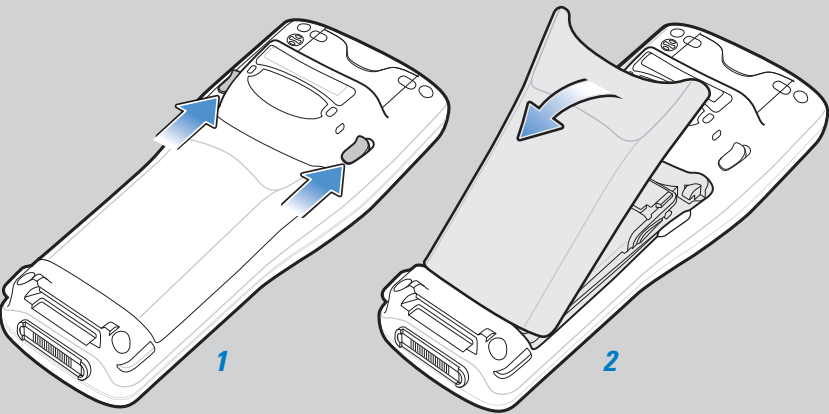


### Back View

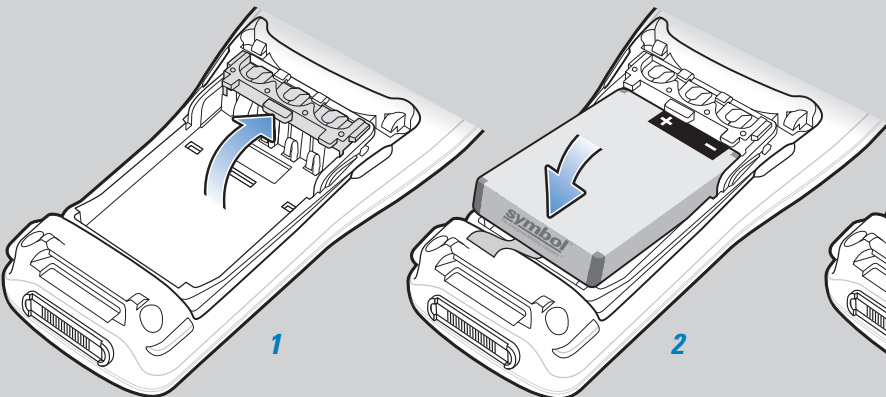


## Battery Installation

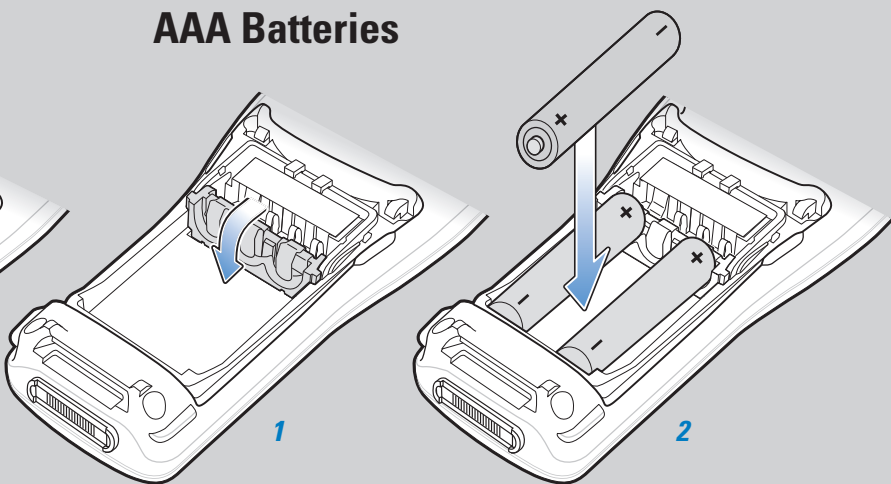
### Battery Door Removal



### Li-Ion Battery



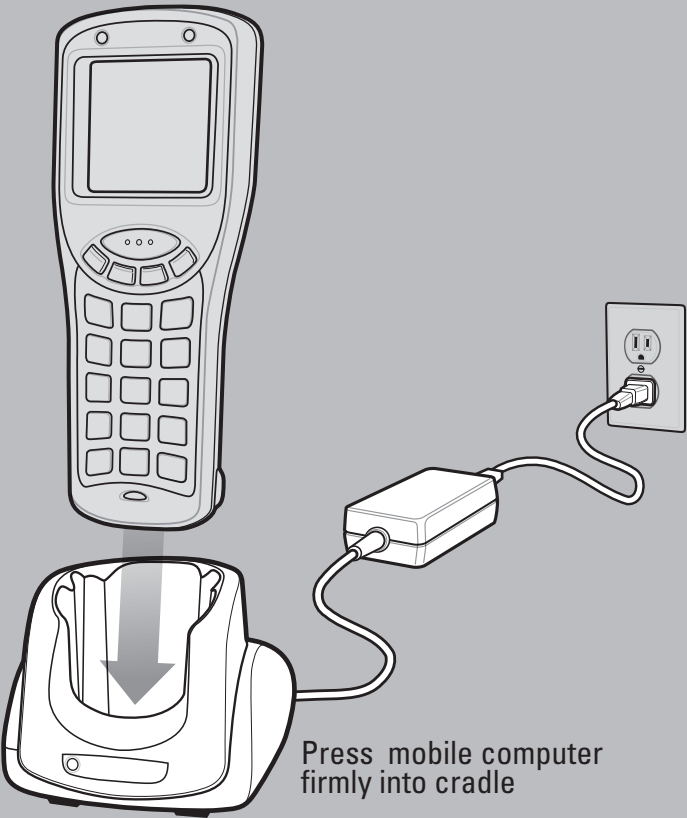
### AAA Batteries



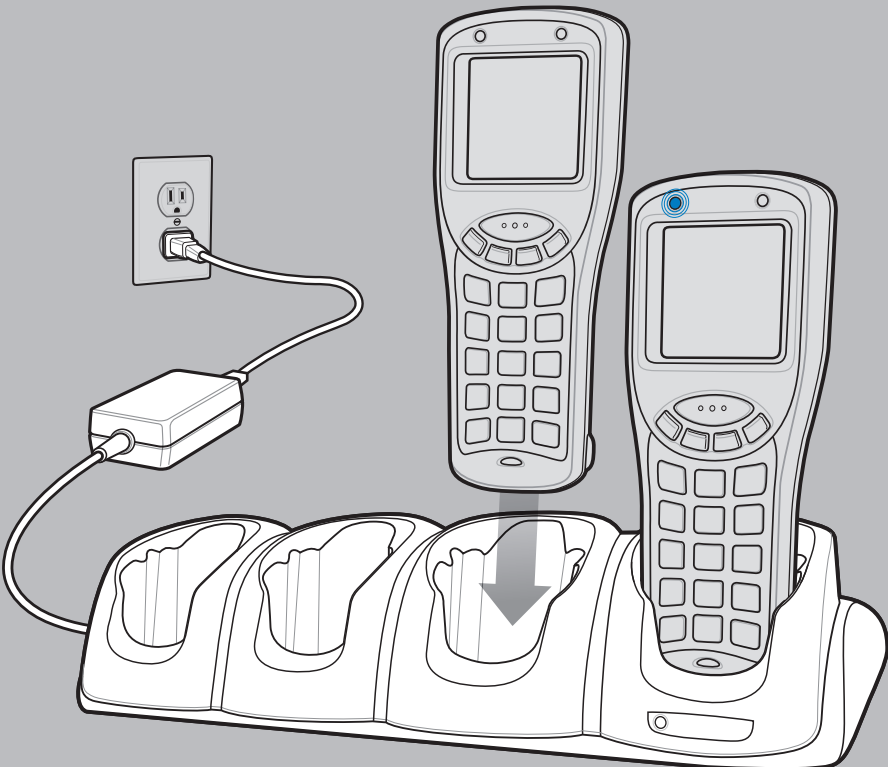
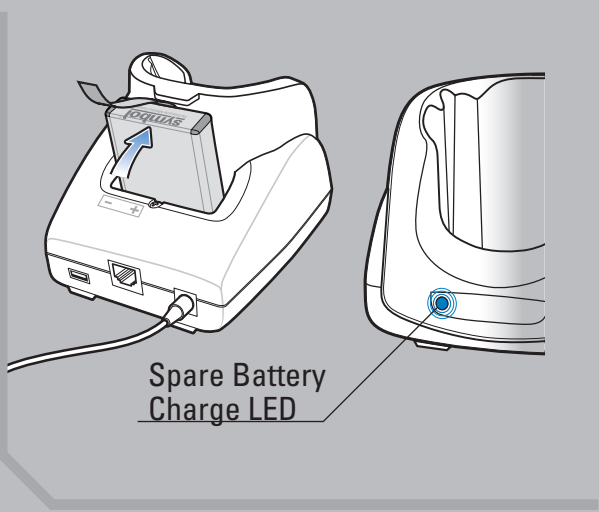
## Charging Instructions

⦿ = LED Indicator Location    Slow Flash = Normal Charge    Solid Amber = Full Charge

**Note:** AAA Batteries cannot be charged in the mobile computer.

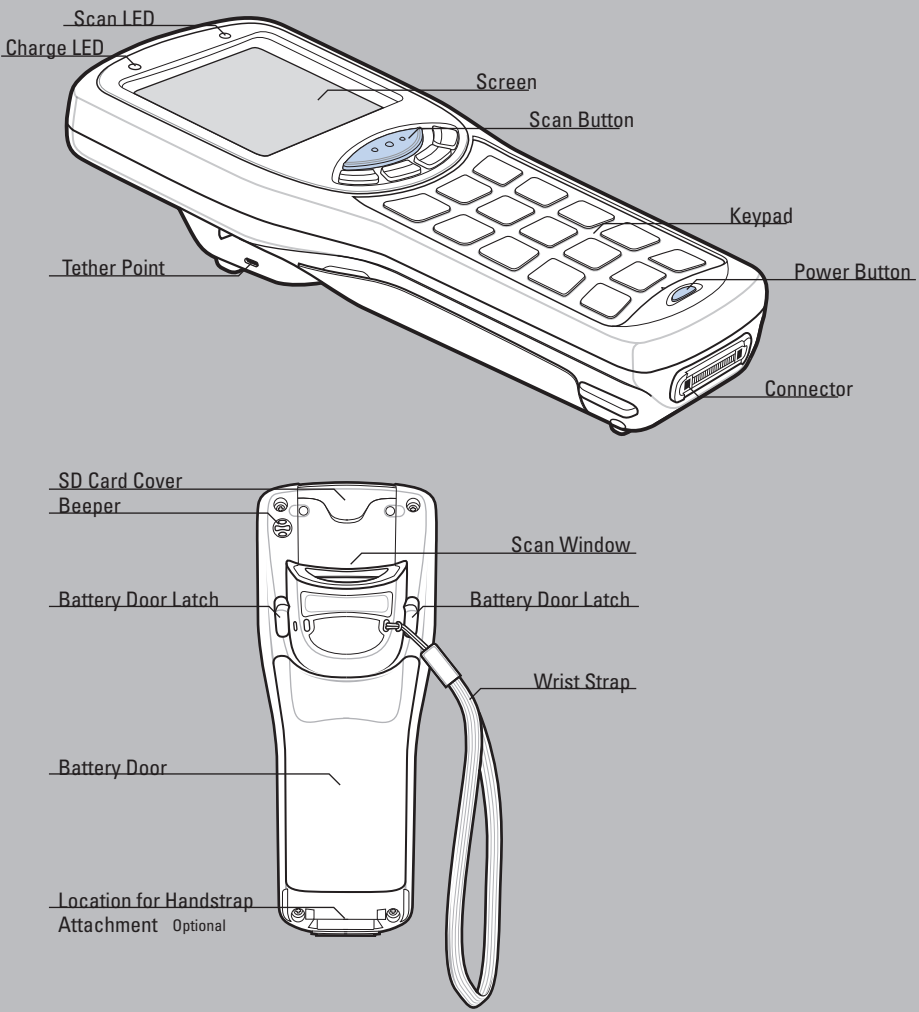


Single Slot Serial/USB Cradle

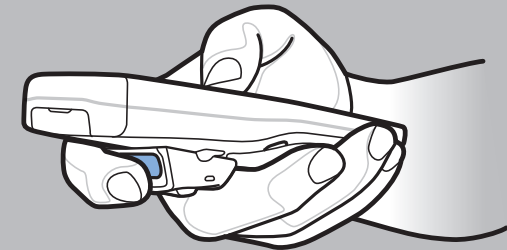
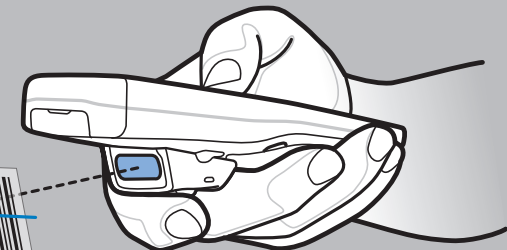


Four Slot USB Cradle

# OPTIMUM SCANNING POSITIONS



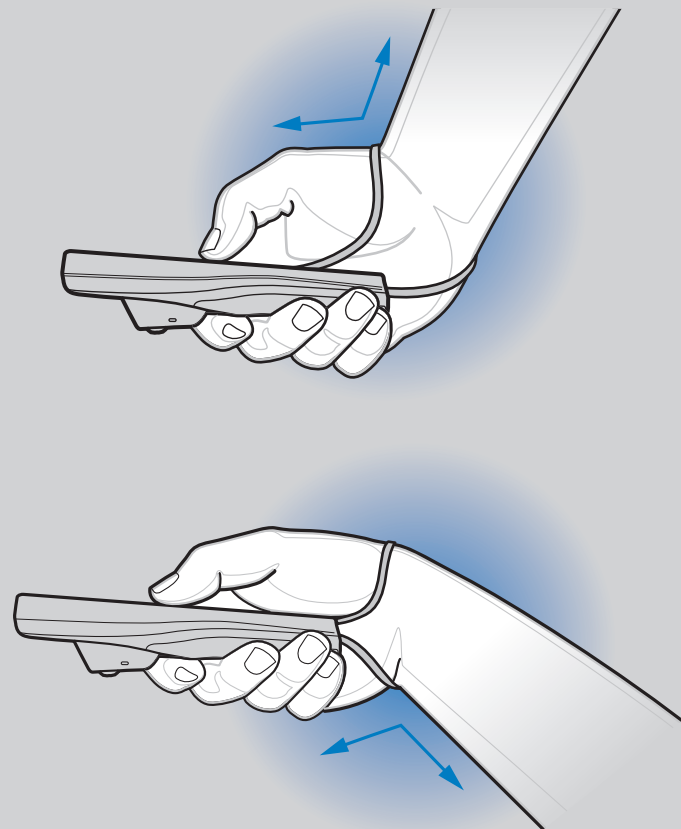
## MC 1000 Scanning



## Do Not Cover Scan Window With Finger

## OPTIMUM UPRIGHT BODY POSTURE

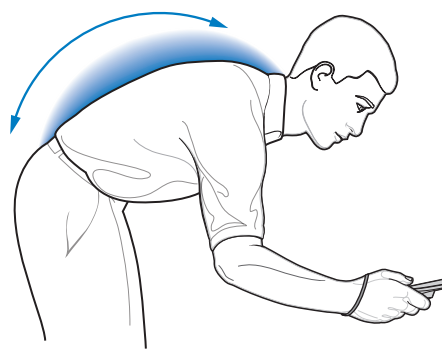
## AVOID EXTREME WRIST ANGLES



## OPTIMUM BODY POSTURE

### Optimum Body Posture For Low Scanning

Alternate left And right knees



Alternate left And right hands

### Optimum Body Posture for High Scanning

Use a ladder



Taking breaks and task rotation recommended

Local Contact: \_\_\_\_\_