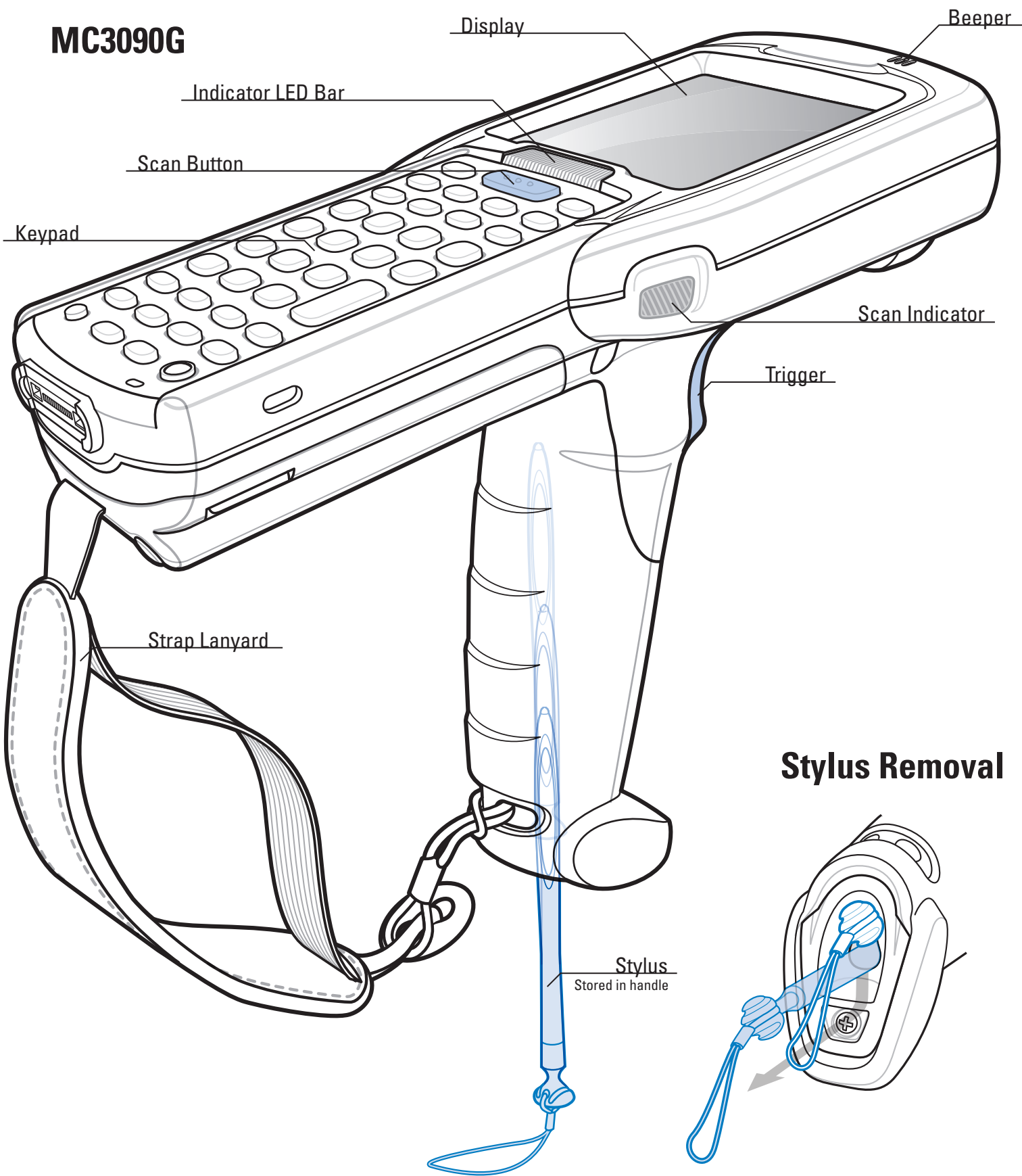
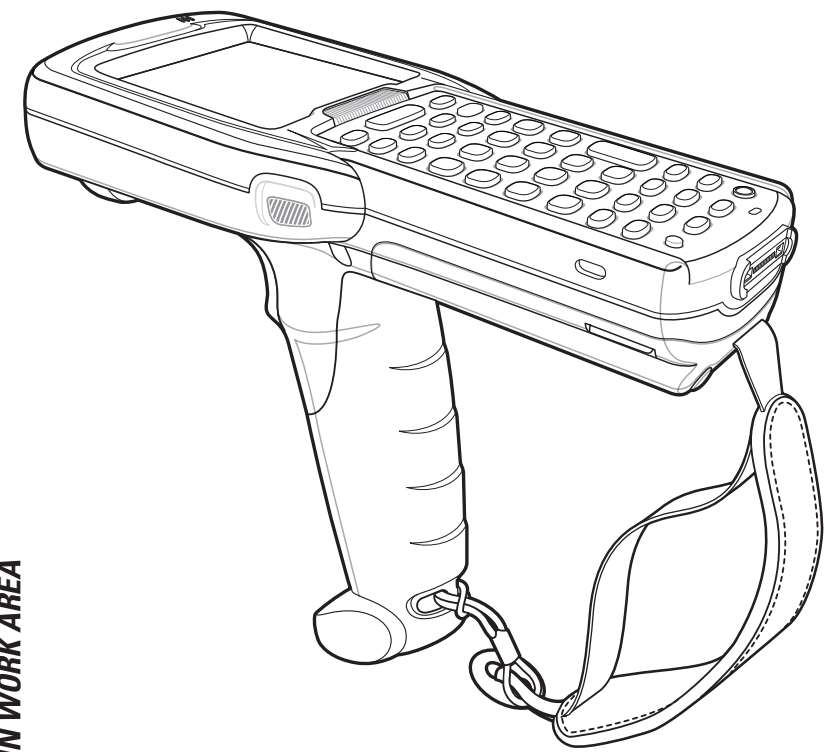


# MC3090G

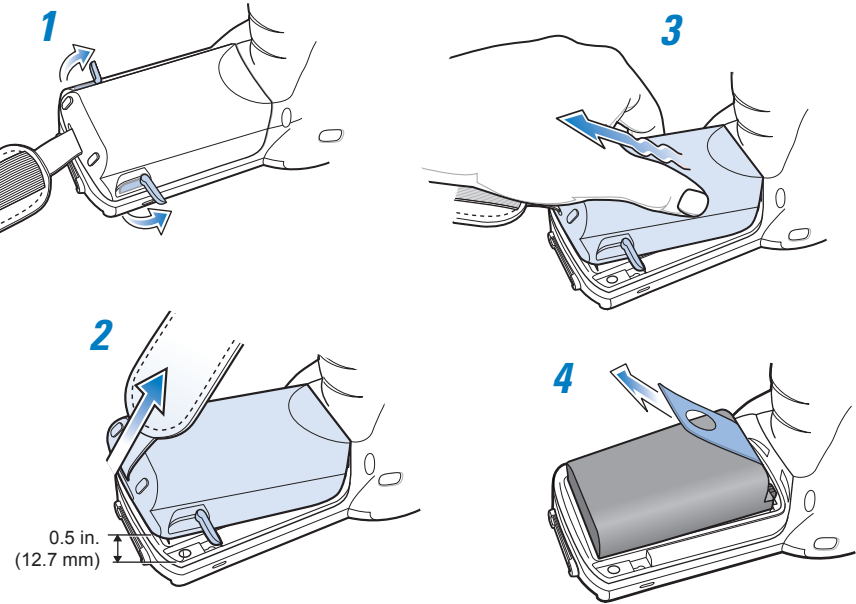
## Quick Start Guide

<http://www.zebra.com/mc3000>  
See User Guide for more information

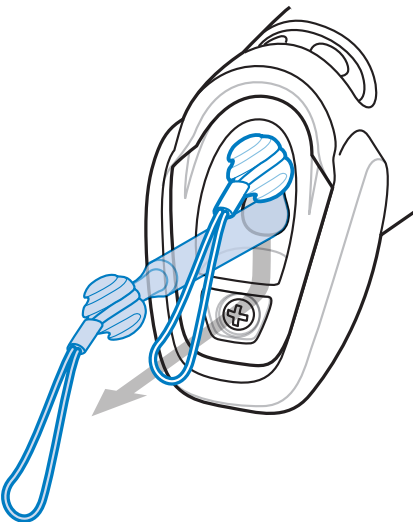
### FEATURES



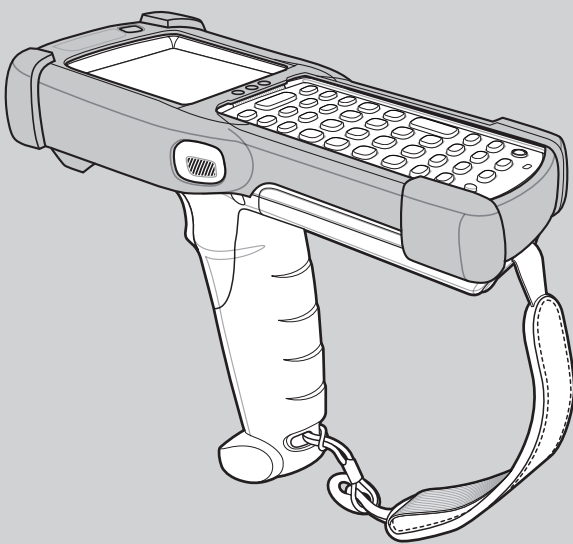
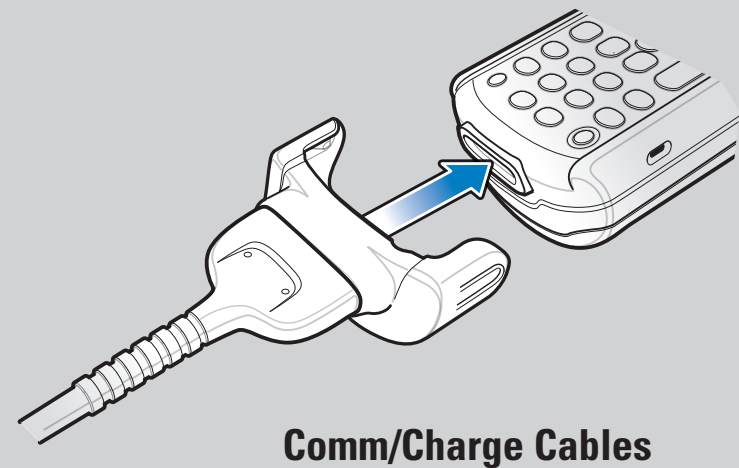
### Battery Removal



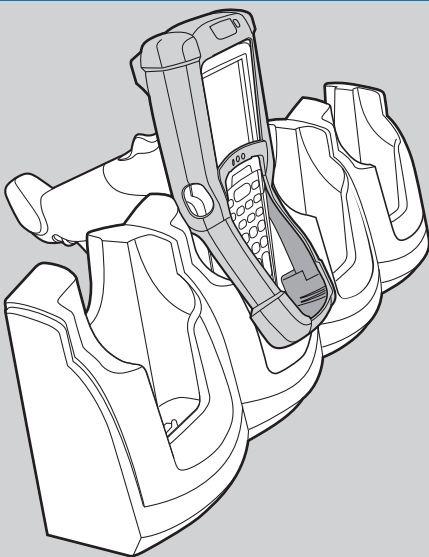
### Stylus Removal



### ACCESSORY INSTALLATION

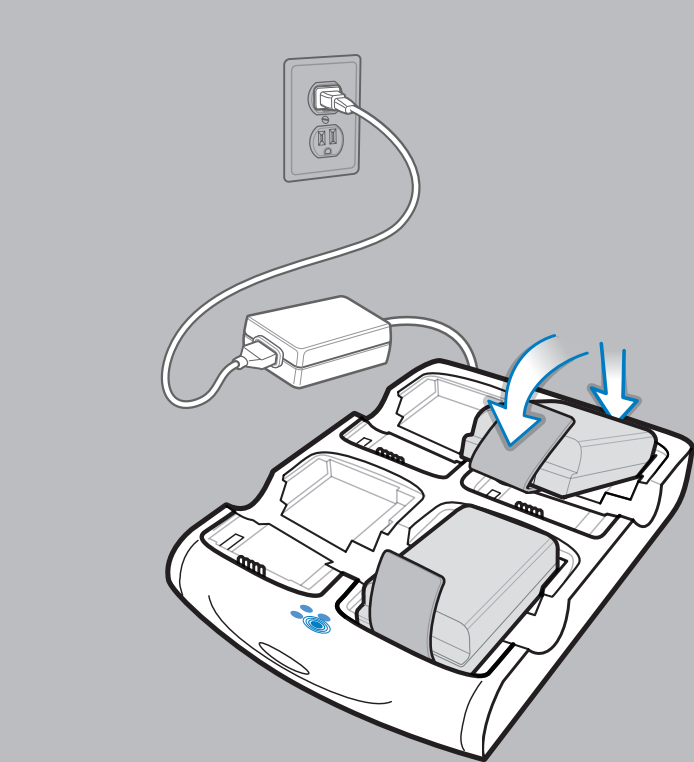


### Rubber Boot



### CHARGING INSTRUCTIONS

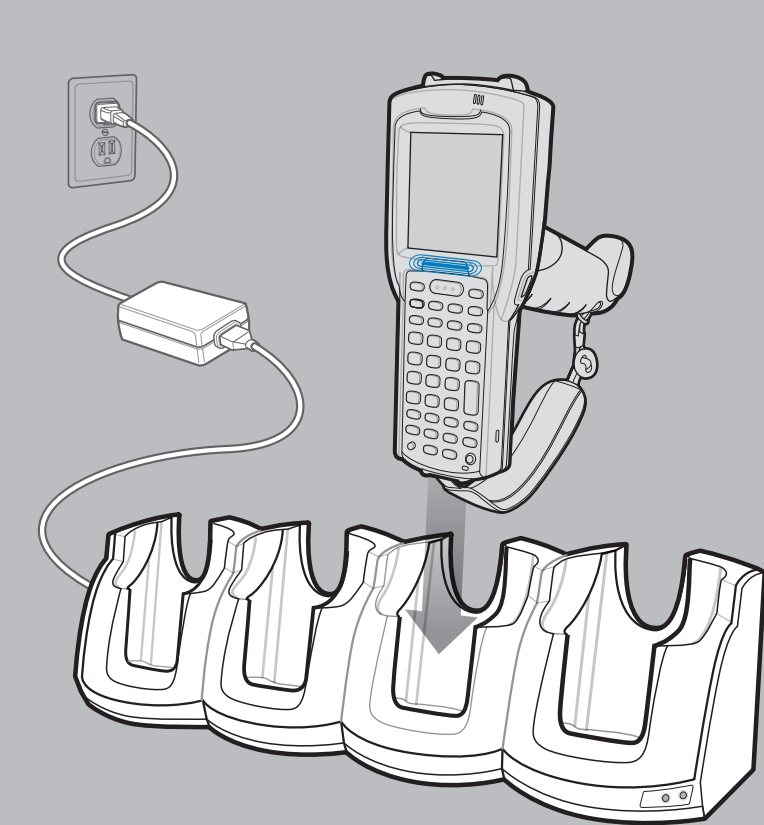
⦿ = LED Indicator Location    Slow Flash = Normal Charge    Solid Amber = Full Charge    Fast Flash = Charging Error



Four Slot Spare Battery Charger

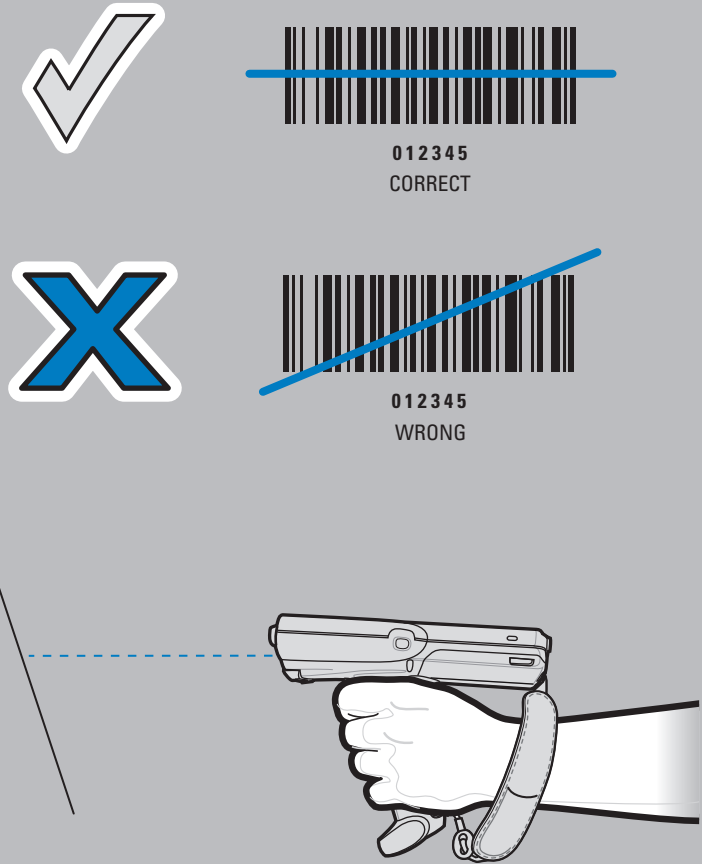
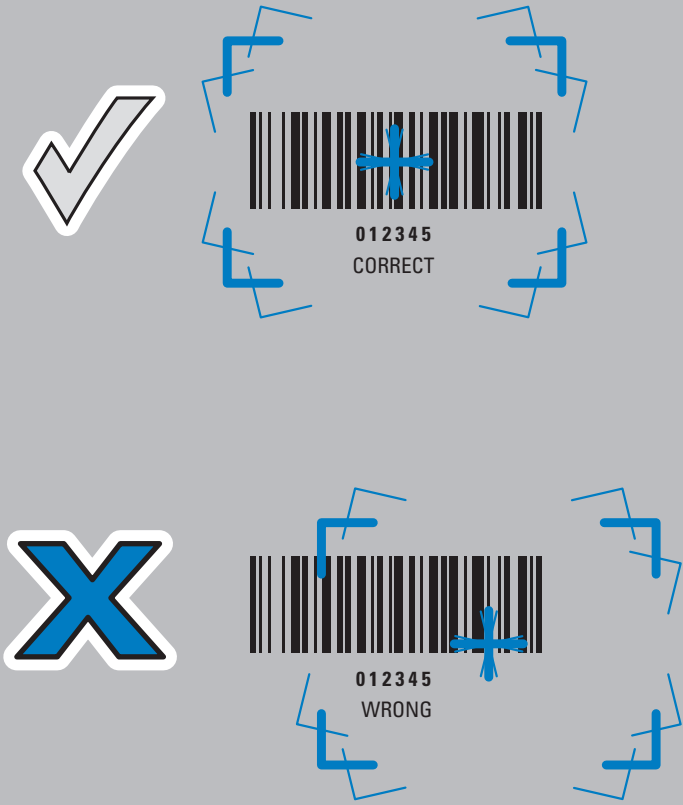
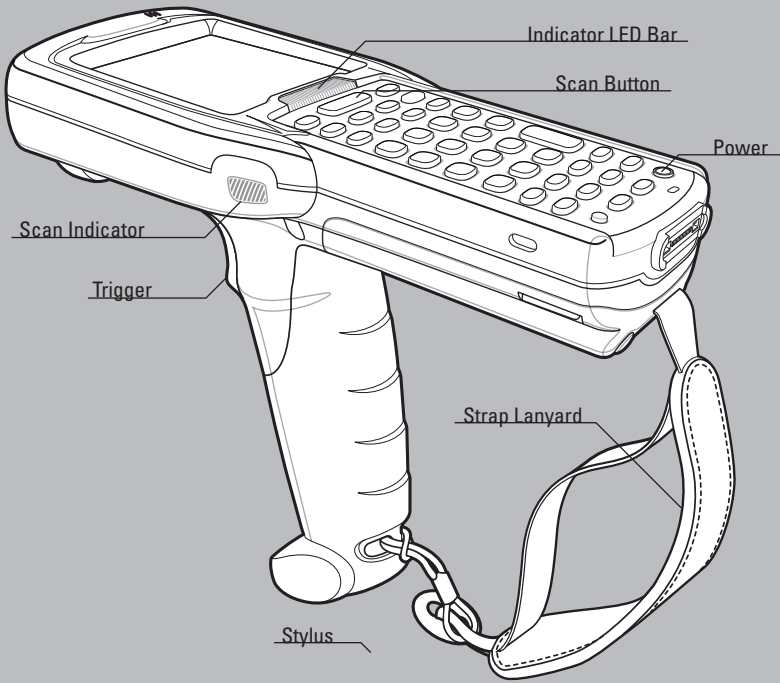


Single Slot Serial Cradle



Four Slot Cradles  
Charge-Only Cradle and Ethernet Cradle

OPTIMUM SCANNING POSITIONS

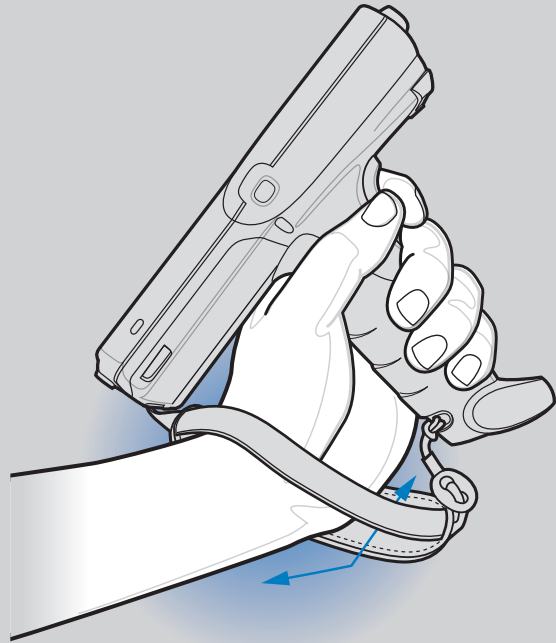
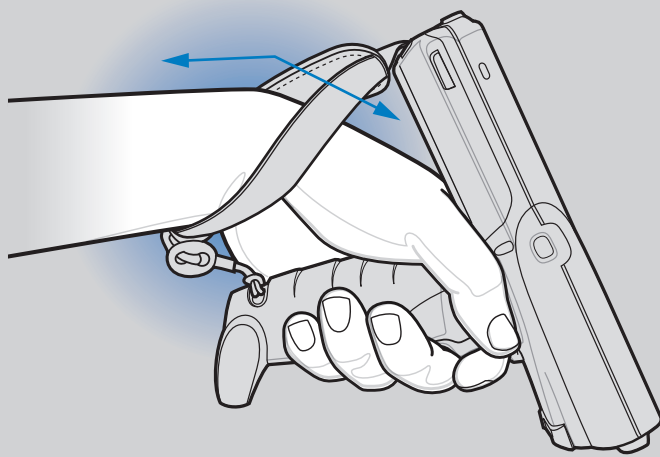


ALTERNATE LEFT AND RIGHT HANDS  
TAKING BREAKS AND TASK ROTATION RECOMMENDED

OPTIMUM UPRIGHT BODY POSTURES



Avoid Extreme Wrist Angles



OPTIMUM BODY POSTURE

Optimum Body Posture for Low Scanning

Alternate left and right knees



Alternate left and right hand

Optimum Body Posture for High Scanning



Use a ladder

Taking breaks and task rotation recommended

Local Contact: \_\_\_\_\_