

# SE1524 1D Lorax Long range end-cap (WA9022) & Back Cover with Lorax Auto Range Switch (WA9301)

## INSTALLATION INSTRUCTIONS



**WARNING!** Installation of any components must be performed using appropriate anti-static devices. If unavailable, discharge body static by touching a grounded metallic object before opening any covers on the hand-held.

### Install the End-Cap (WA9022)

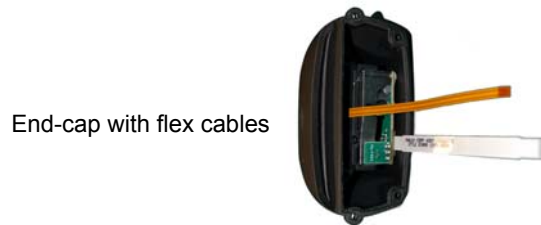


**NOTE** The WA9301 back cover with Lorax Auto Range switch is required for this end-cap. It must be ordered separately.

The SE1524 1D Lorax Long Range End-cap kit includes this end-cap along with:

- M2.6x8L Torx T6 screws (x4)

1. Remove the existing end-cap (x4 screws), back cover (x6 screws), and battery.
2. Attach the SE1524 Long Range end-cap (WA9022) using the screws provided (x4), torqued to 2.6in-lbs.



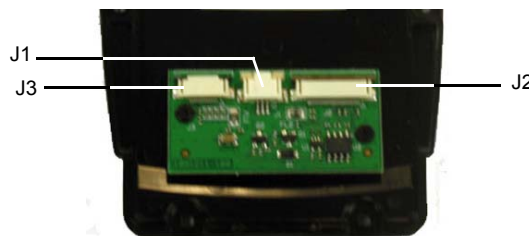
### Install the Back Cover (WA9301)

The Back Cover with Switch (WA9301) includes this back cover along with:

- M2x3 I-Type screws (x6)
- Cover plate for switch
- Flex cable (PN 1050450)



1. Unlatch the three connectors on the WA9301, inside interface board.



2. Position the lower end of the new back cover next to the back opening of the unit. Insert the supplied 22-pin flex cable to the main logic board of the hand-held and into J2 on the interface board. The contacts on the flex cable must face towards the circuit board.



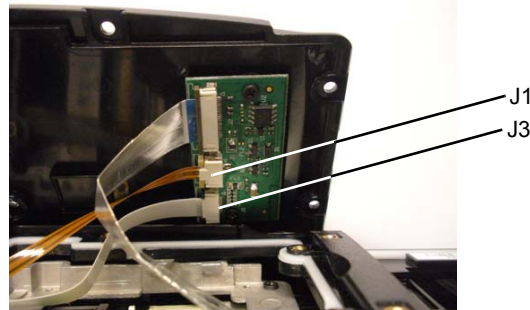
Flex cable supplied with WA9301 back cover

3. Lock the connector in place.

4. Flip the backplate to the other side of the opening in the unit.



5. Insert the 15-pin flex cable from the scanner into J3 of the interface board. The contacts on this flex cable face away from the circuit board. Latch the connector.



6. Insert the narrow, 3-pin flex cable from the beeper into J1 of the interface board. The contacts on this flex cable face away from the circuit board. Latch the connector.
7. Turn the back over, and fasten it onto the unit using the six screws provided, torqued to 2.6 in-lbs.
8. Insert the battery, and replace the battery cover.

#### Once the end-cap is installed:

1. Press and hold down the **[Power] [FN/BLUE]** and the top-middle **[SCANNER]** button simultaneously to display the *Boot* menu.
2. Press the **[s]** key to display the *Scanner* menu. (For numeric keyboard users, press the **[FN/ORANGE]** key, press the **[7]** key four times, and then press the **[FN/ORANGE]** key again.)
3. Type the number corresponding with the end-cap you have installed – **41** to configure the *SE1524*. Press **[ENTER]**.
4. Choose option **1** to run the main OS.
5. Press and hold down the **[Power] [FN/BLUE]** and the top-middle **[SCANNER]** button simultaneously to display the *Boot* menu again.

✓ **NOTE** It is critical that you execute the previous step to display the *Boot* menu again; if this step is omitted, the *DataWedge Status Icon* indicates that *DataWedge* is in idle mode  making the capture device unavailable.

6. Next, perform a clean boot – at the *Command>* prompt, type **.clean** (for numeric keyboard users, type **.25326**). Press **[ENTER]**.

✓ **NOTE** For *Windows Embedded Hand-Held 6.5*, clean booting the device removes the add-on CAB file. It must be re-installed.

#### To re-install the add-on CAB file:

1. Download the add-on CAB file from Ingenuity Working to your Workabout Pro4.
2. Double-click the add-on CAB filename to install the CAB file.

#### Service Information

If you have a problem using the equipment, contact your facility's Technical or Systems Support. If there is a problem with the equipment, they will contact the Global Support Center at: <http://www.zebra.com/support>.



Zebra Technologies Corporation  
Lincolnshire, IL U.S.A.  
<http://www.zebra.com>

Zebra and the Zebra head graphic are registered trademarks of ZIH Corp. The Symbol logo is a registered trademark of Symbol Technologies, Inc., a Zebra Technologies Company.

© 2015 Symbol Technologies, Inc.

