

STANDARD BLANK END-CAP (WA6214) WITH STYLUS HOLDER INSTALLATION SHEET



Warning: Installation of any components must be performed using appropriate anti-static devices. If unavailable, discharge body static by touching a grounded metallic object before opening any covers on the hand-held.

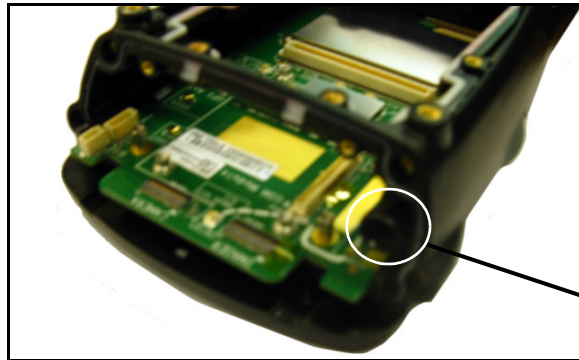
Along with the blank end-cap, this kit includes:

- M2.6x8L Torx T6 screws (x4)
- stylus



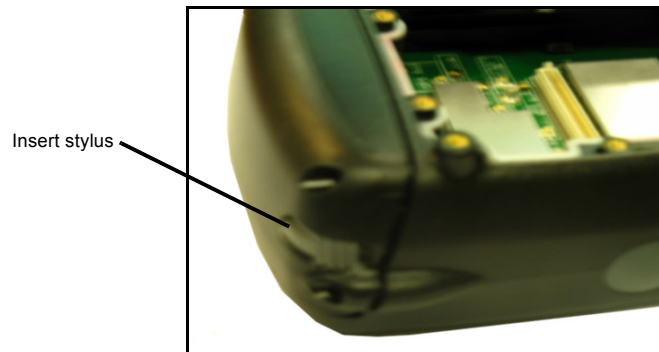
Important: Always disconnect the unit from all power sources (battery & A/C power) before servicing components.

1. Remove battery, back cover (x6 screws), and end-cap (x4 screws).
2. Slide the stylus tube into the opening along the left side of the unit.



Insert stylus tube here

3. Attach the end-cap using the four screws provided. Torque to 2.6 in-lbs.
4. Slide the stylus into the slot.



Insert stylus

5. Install the back cover.
6. Install the battery and battery cover.

COMPANY HEADQUARTERS
Zebra Technologies Corporation
Lincolnshire, IL U.S.A.
<http://www.zebra.com>

SUPPORT SERVICES
Contact the Zebra Global Customer Support at:
<http://www.zebra.com/support>