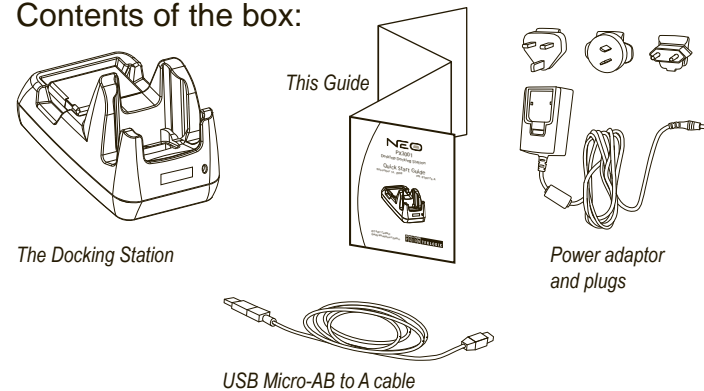
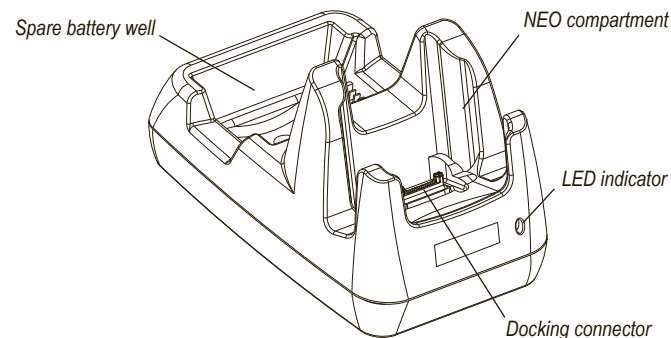


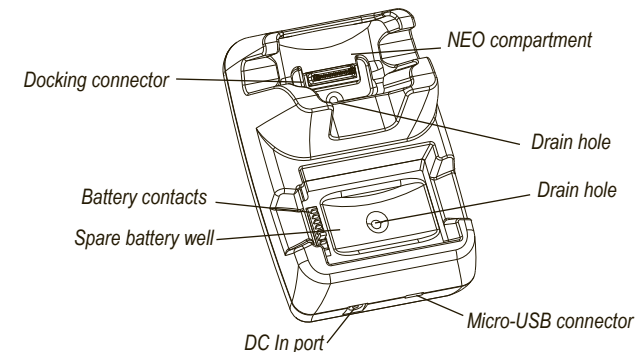
Contents of the box:



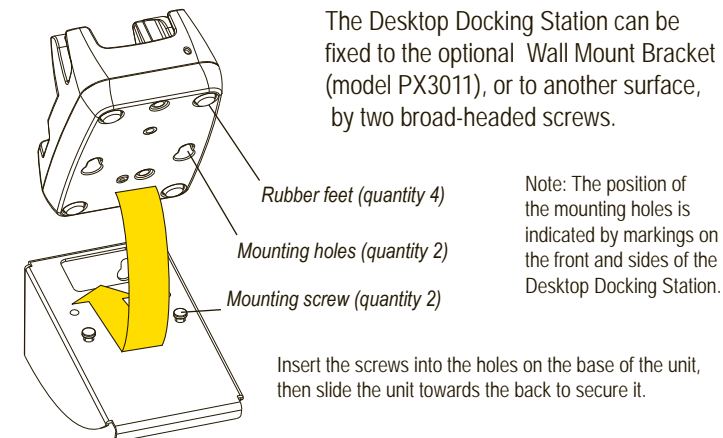
Features: Front



Features: Back, Ports, And Battery Charge Well

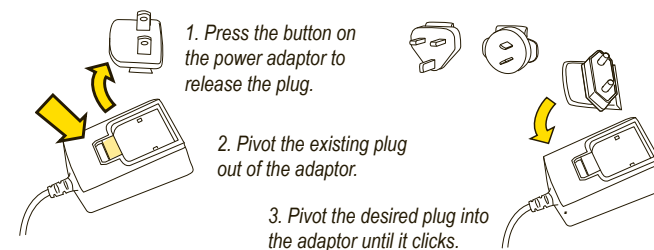


Mounting The Desktop Docking Station

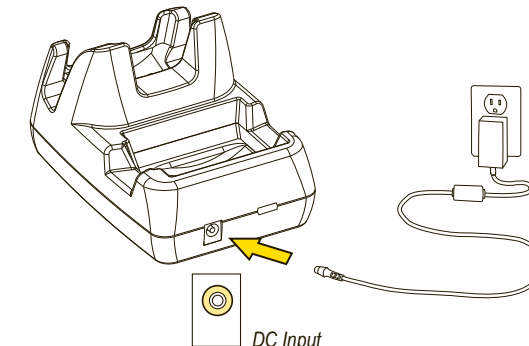


Getting Started

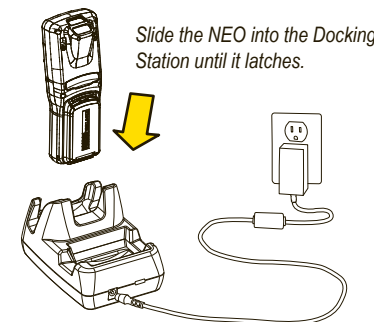
- 1 Choose a plug for the universal power adaptor. The adaptor may already be fitted with the plug you need.



- 2 Connect the Docking Station to external power.

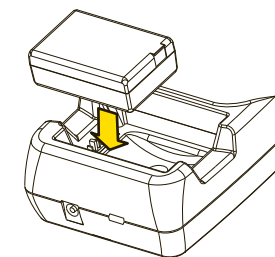


- 3 Insert the NEO to charge its battery.



Note: Use only the universal AC power supply approved by Psion Teklogix for use with the Docking Station.

- 4 Insert the spare battery.



Allow the NEO and the spare battery to charge for three hours before first use.

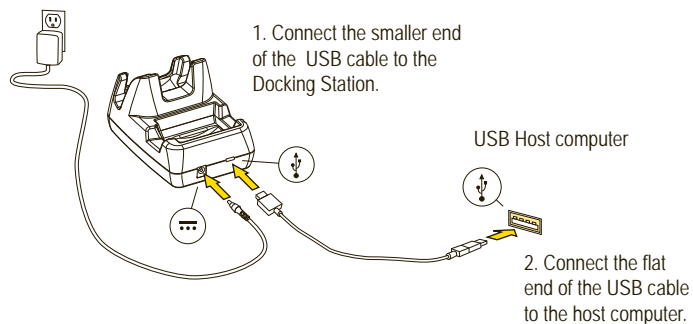


Note: Full battery performance is only reached after the first few charge/discharge cycles.

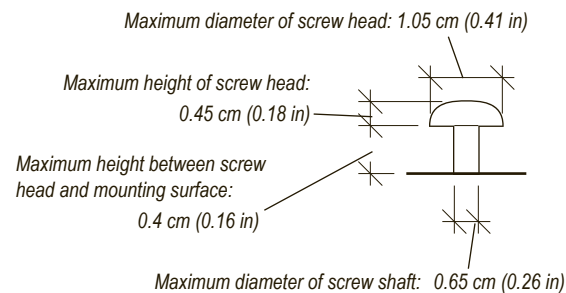
Over

To connect the Docking Station to a host computer:

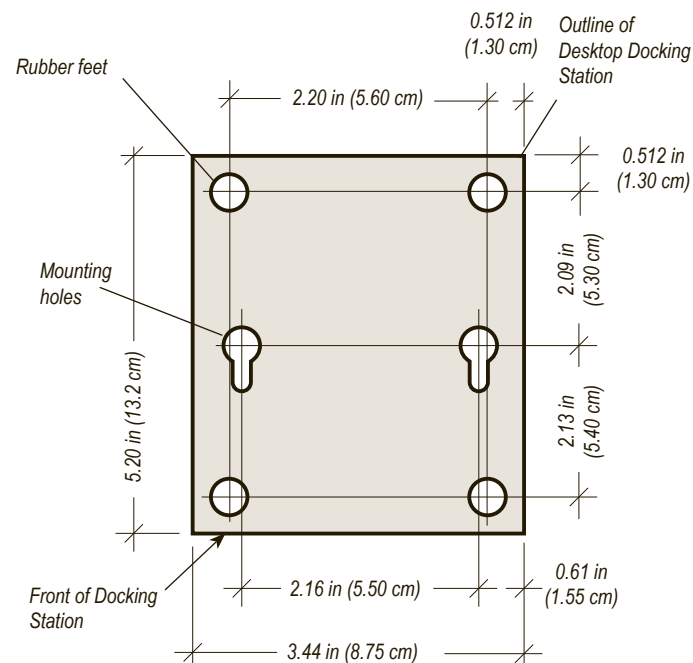
The NEO in the Docking Station acts as a USB Client.



Dimensions Of Mounting Screws



Location Guide For Mounting Screws



The mounting screws are M4 x 6mm panhead screws.

Psion Teklogix and NEO are trademarks of Psion Teklogix Inc. Other product names mentioned in this document are trademarks or registered trademarks of other hardware, software, or service providers and are used herein for identification purposes only.



8100176

Rev. A

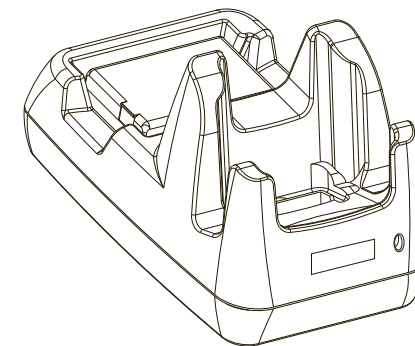
NEO™

PX3001 Desktop Docking Station

Quick Start Guide

November 14, 2008

PN: 8100176.A



ISO 9001 Certified
Quality Management System

