

OMNII™ END-CAP WITH GPS & HSPA+ RADIO KIT INSTALLATION



Warning: The installation of any components must be performed using the appropriate anti-static devices. If unavailable, discharge static from your body by touching a grounded metallic object before opening any covers on the hand-held.

This instruction sheet describes how to install the GPS/HSPA+ Radio Kit RA3050-GPS and an end-cap kit. The following end-cap kits are available: ST9600, ST9604, ST9605, ST9606, ST9607, ST9608 and ST9609.

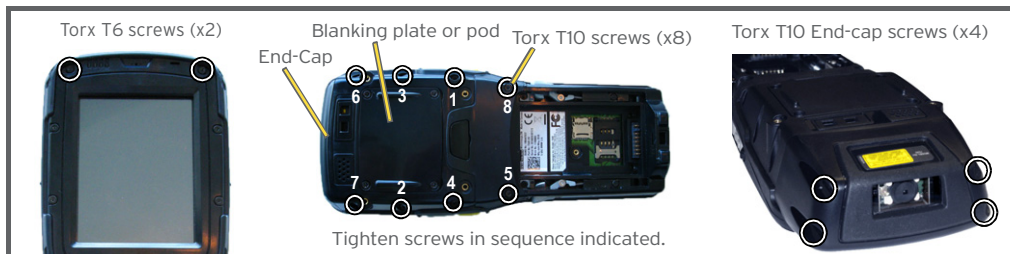
Components Needed for Installation	Kit Contents
GPS Radio Kit (Model Number RA3050-GPS)	GPS radio with frame; Torx T6 screws (x 3); regulatory labels (various)
GPS End-cap Kit	GPS end-cap with antenna attached; Torx T10 screws (x 4)
Tools: Torx T10 screwdriver; Torx T6 screwdriver; small needle-nose pliers	N/A



1. Getting the Omnii Ready for GPS/HSPA+ Installation

Warning: Always disconnect the Omnii from all power sources (battery & A/C power) before servicing components.

Figure 1



- Remove the battery.
- Remove the blanking plate or pod if attached (four screws) using a Torx T10 screwdriver. In the case of a pod, disconnect the flex cable from the pod.
- Using a Torx T6 screwdriver, remove the two top-most screws on the front of the unit, just above the display.
- Remove the eight T10 screws holding the back cover to the main housing. The screws are illustrated in Figure 1.
- Carefully separate the back cover from the chassis without putting strain on the cables that are still connected.
- Locate the trigger/speaker cable at the top corner of unit. Grasp the wires in a bundle, and lift them **straight up** to disconnect the harness from the socket on the main logic board. Carefully disconnect any other cables.



Warning: Do not try to pry the harness from the socket, or you may dislocate the socket from the main logic board.

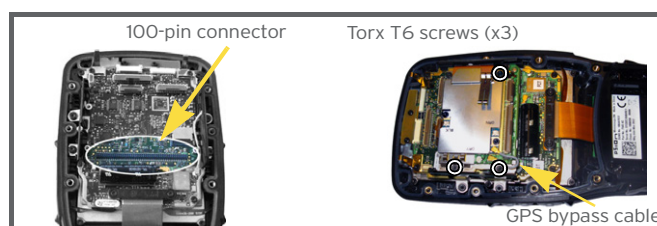


- Remove the existing end-cap (four screws) using a Torx T10 screwdriver.

2. Installing the GPS/HSPA+ Radio Module

- Align the 100-pin connector on the GPS radio module with the connector on the main logic board, and press down to attach it.
- Using a Torx T6 screwdriver, secure the GPS radio to the main logic board with 3 screws (M2x5 mm), torqued to 2.5 in-lb (0.28 N-m).

Figure 2



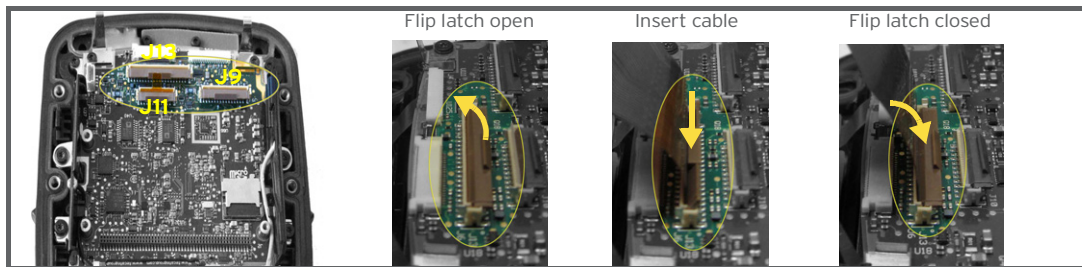
3. Attaching the GPS/HSPA+ End-Cap

- Run the cables (x3) and scanner/imager flex cable, if present, through the opening at the top of the expansion back cover.
- Using a Torx T10 screwdriver and the four screws provided (M3 x 6 mm), secure the GPS end-cap to the expansion back cover. Torque to 5 in-lb (0.56 N-m).

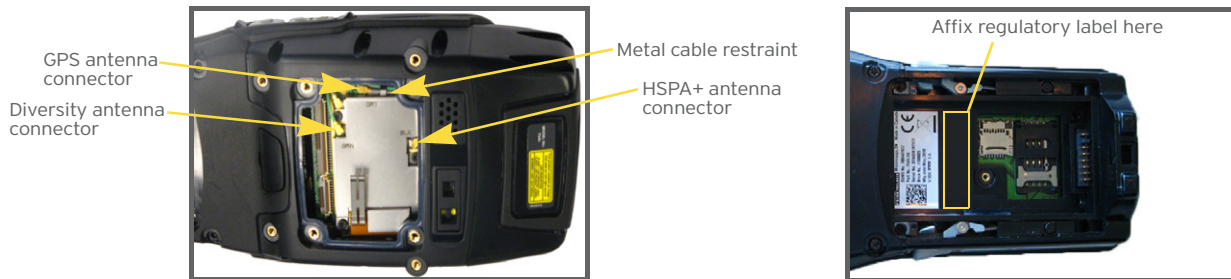
4. Reassembling Omnii

- Before reattaching the back cover, connect the pistol grip trigger/speaker wire harness to socket J11 on the main logic board. If a camera module is present, connect the camera flex cable to socket J9 on the main logic board.
- If a scanner/imager flex cable is present in the end-cap (model numbers ST9604, ST9605, ST9606, ST9607, ST9608 and ST9609), connect it to socket J13 on the main logic board as shown in Figure 3. If no cable has previously been installed in this socket, there may be a piece of "dummy" stiffener that must be removed before inserting the cable.
- Make certain the GPS bypass cable is connected (see Figure 2 on the previous page).

Figure 3



- Fit the back cover in place against the main housing, ensuring that no cables are caught in the seal. If the pod flex cable is installed, ensure that the free end can be accessed through the pod opening in the back cover.
- Using a Torx T10 screwdriver, tighten the eight screws (M3x6 mm) to a torque of 5 in-lb (0.56 N-m). Install the screws in the sequence shown in Figure 1 on the previous page to ensure a consistent seal around the opening.
- Using a Torx T6 screwdriver, replace the two screws (M2x8 mm) above the display on the front of the unit. Torque to 2.5 in-lb (0.28 N-m).
- Through the scanner pod opening, use small needle-nose pliers to route the *grey* GPS antenna cable under the two metal cable restraints on the left side of the GPS module.
- Press the grey GPS antenna connector into the socket labelled *GRY* on the left side of the unit. Snap it into place.
- Through the scanner pod opening, use small needle-nose pliers to route the *black* HSPA+ radio antenna cable under the metal cable restraint at the top of the radio module.
- Press the black HSPA+ antenna connector into the socket labelled *BLK* on the radio module. Snap it into place.



- Press the *green* diversity cable connector into the socket labelled *GRN*.
- If you are reattaching a pod, connect the pod flex cable to the pod.
- Affix regulatory label in position shown in photo above, depending on region e.g. 1004434 for North America and 1004111 for EU countries.
- Reattach the pod or blanking plate using a Torx T10 screwdriver and four screws (M3x5 mm) to 5 in-lb (0.56 N-m).
- Install the battery.