

RA3051 WWAN RADIO KIT WITH ANTENNAS (WAN / GPS/ WI-FI DIVERSITY) INSTALLATION INSTRUCTIONS



CAUTION Installation of any components must be performed using appropriate anti-static devices. If unavailable, discharge body static by touching a grounded metallic object before opening any covers on the hand-held. **Installation of any components must be performed using appropriate anti-static devices. If unavailable, discharge body static by touching a grounded metallic object before opening any covers on the hand-held..**

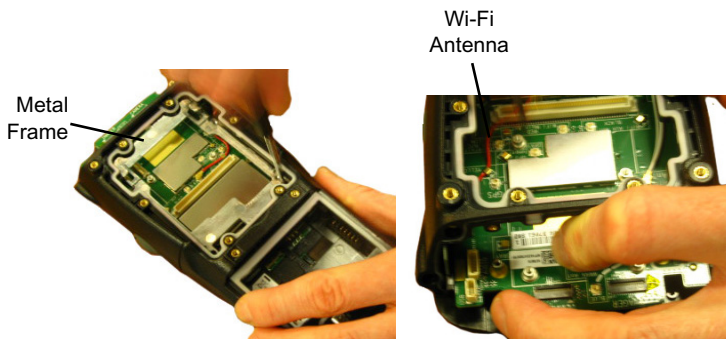


NOTE If the unit does not have an imager or scanner end-cap attached, the WA6212 long blank end-cap is required. The WA6212 end-cap is not included in the RA3051 kit. It must be ordered separately.

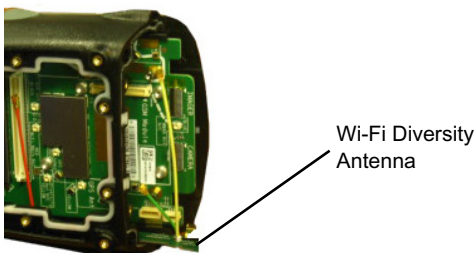
The RA3051 radio kit includes the UMTS PHS8-P Expansion Module along with the following:

- M2x4 Torx T6 screws (x4)
- GPS jumper cable
- WAN main antenna
- WAN diversity antenna
- Labels

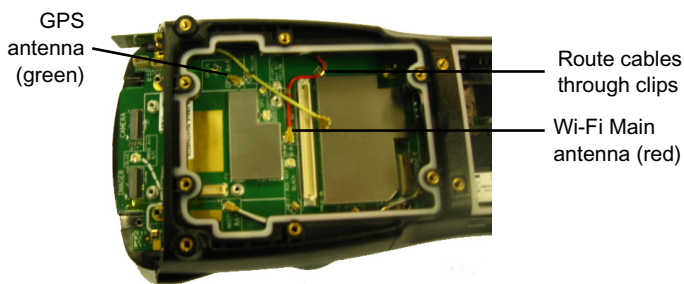
1. Remove the end-cap (x4 screws), back cover (x6 screws), and battery.
2. Remove the metal frame (x4 screws), and remove the existing Wi-Fi antenna.



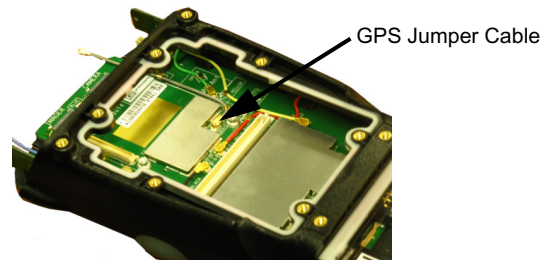
3. Slide the Diversity Antenna into the grooves along the right side of the unit.



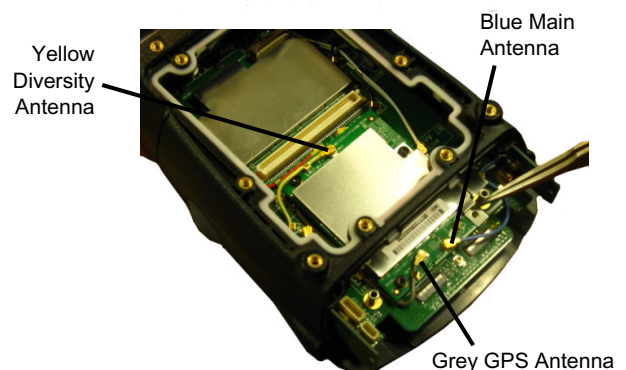
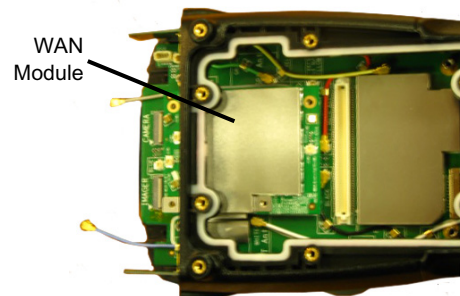
4. Route the cables as indicated on the board – insert the red Wi-Fi antenna into the socket labeled Red and the green GPS antenna into the socket labeled Green. Secure the cables by routing them through the clips.



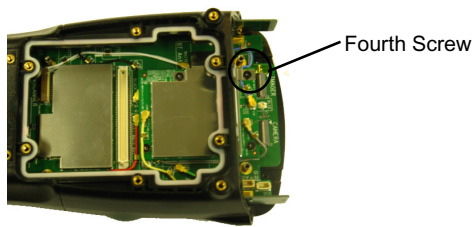
5. Slide the Main antenna into the grooves on the left side of the unit until it is anchored in place. Insert the black antenna to the socket labeled Black. Route it through the clips to secure it in place. Next, connect the grey GPS jumper cable as shown.



6. Snap the WAN module onto the hand-held board, making sure to align the module pins with those on the board. Insert 3 screws torqued to 2.5 in-lbs. Next, insert the yellow Diversity antenna into the socket labelled Yellow. Connect the grey GPS cable, tucking it under the corner of board as shown. Insert the blue Main antenna into the socket labelled Blue. Tuck the blue Main antenna under the WAN module shield. The cable should follow the silk screen routing.



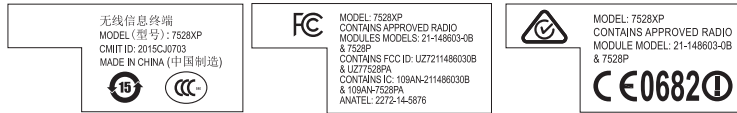
7. Add the fourth screw to secure the WAN module in place.



8. Replace the metal frame, sliding it in from the top. Take care not to damage the cables that have been connected. Insert the four screws to a torque of 2.6 in-lbs.
9. Install the back cover (x6 screws) and the end-cap (x4 screws). Each is torqued to 2.6 in-lbs.
10. Install the battery and battery cover.

For this installation, you will need the following:

- desktop docking station
- USB flash drive
- BooST script software – To receive the appropriate BooST script software release, contact: www.zebra.com/support



LB000450A01

1101746-001

1101745-002

Code	Country	Label
AI	Anguilla	1101746-001
AR	Argentina	1101746-001
AT	Austria (EU)	1101745-002
AU	Australia	1101745-002
BA	Bosnia	1101745-002
BD	Bangladesh	1101745-002
BE	Belgium (EU)	1101745-002
BG	Bulgaria (EU)	1101745-002
BO	Bolivia	1101746-001
BR	Brazil	1101746-001
CA	Canada	1101746-001
CH	Switzerland (EU)	1101745-002
CL	Chile	1101746-001
CN	China	LB000450A01
CO	Columbia	1101746-001
CX	Christmas Islands	1101745-002
CY	Cyprus (EU)	1101745-002
CZ	Czech Republic (EU)	1101745-002
DE	Germany (EU)	1101745-002
DK	Denmark (EU)	1101745-002
DO	Dominican Republic	1101746-001
EE	Estonia (EU)	1101745-002
ES	Spain (EU)	1101745-002
FI	Finland (EU)	1101745-002
FK	Falkland Islands	1101745-002
FM	Micronesia	1101745-002
FR	France (EU)	1101745-002
GB	United Kingdom (EU)	1101745-002
GE	Georgia	1101745-002
GF	French Guiana	1101745-002

Code	Country	Label
GP	Guadeloupe	1101745-002
GR	Greece (EU)	1101745-002
GT	Guatemala	1101746-001
HK	Hong Kong	1101745-002
HR	Croatia (EU)	1101745-002
HU	Hungary (EU)	1101745-002
IE	Ireland (EU)	1101745-002
IL	Israel	1101745-002
IO	British Indian Ocean territory	1101745-002
IS	Iceland (EU)	1101745-002
IT	Italy (EU)	1101745-002
KY	Cayman Islands	1101746-001
LI	Liechtenstein (EU)	1101745-002
LT	Lithuania (EU)	1101745-002
LU	Luxembourg (EU)	1101745-002
LV	Latvia (EU)	1101745-002
MC	Monaco	1101745-002
ME	Montenegro	1101745-002
MK	Macedonia	1101745-002
MQ	Martinique	1101745-002
MS	Montserrat	1101745-002
MT	Malta (EU)	1101745-002
MV	Maldives	1101745-002
MX	Mexico	1101746-001
NF	Norfolk Islands	1101745-002
NL	Netherlands (EU)	1101745-002
NO	Norway (EU)	1101745-002
NU	Niue	1101745-002
NZ	New Zealand	1101745-002
PA	Panama	1101746-001
PE	Peru	1101746-001
PK	Pakistan	1101745-002
PL	Poland (EU)	1101745-002
PN	Pitcairn	1101745-002
PR	Puerto Rico	1101746-001
PT	Portugal (EU)	1101745-002
RE	Reunion	1101745-002
RO	Romania (EU)	1101745-002
RU	Russia	1101745-002
SE	Sweden (EU)	1101745-002
SG	Singapore	1101745-002
SI	Slovenia (EU)	1101745-002
SJ	Svalbard	1101745-002
SK	Slovak Republic (EU)	1101745-002
SM	San Marino	1101745-002
ST	Sao Tome and Principe	1101745-002
SV	El Salvador	1101746-001
TR	Turkey	1101745-002
UA	Ukraine	1101745-002
US	United States	1101746-001
VA	Holy See (Vatican City State)	1101745-002
VE	Venezuela	1101746-001
VI	Virgin Islands (US)	1101746-001
VN	Vietnam	1101745-002



www.zebra.com

