

RA3051 WWAN RADIO KIT WITH ANTENNAS (WAN/GPS/WI-FI DIVERSITY) INSTALLATION INSTRUCTIONS



CAUTION Installation of any components must be performed using appropriate anti-static devices. If unavailable, discharge body static by touching a grounded metallic object before opening any covers on the hand-held. **Installation of any components must be performed using appropriate anti-static devices. If unavailable, discharge body static by touching a grounded metallic object before opening any covers on the hand-held.**

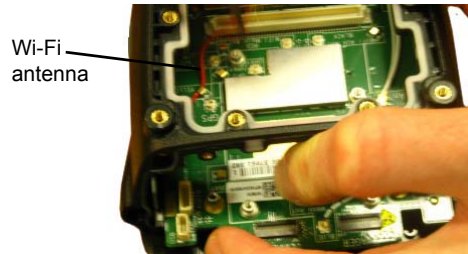
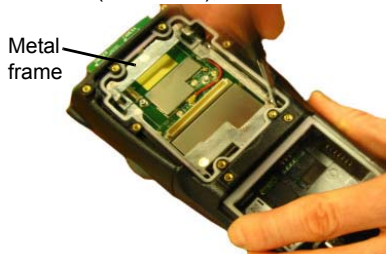


NOTE If the unit does not have an imager or scanner end-cap attached, the WA6212 long blank end-cap is required. The WA6212 end-cap is not included in the RA3051 kit. It must be ordered separately.

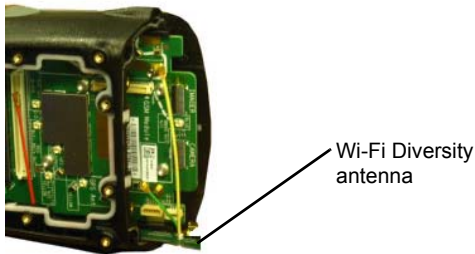
The RA3051 radio kit includes the UMTS PHS8-P Expansion Module along with the following:

- M2x4 Torx T6 screws (x4)
- GPS jumper cable
- WAN main antenna
- WAN diversity antenna

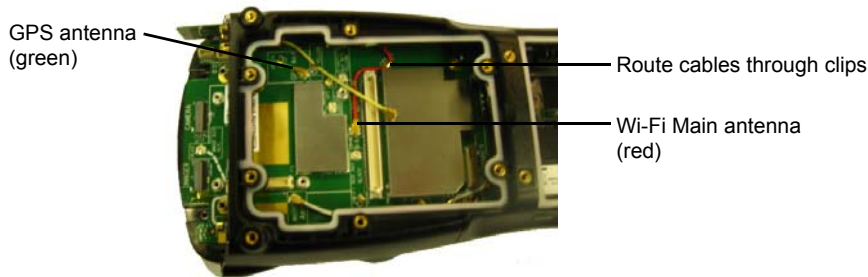
1. Remove the end-cap (x4 screws), back cover (x6 screws), and battery.
2. Remove the metal frame (x4 screws), and remove the existing Wi-Fi antenna



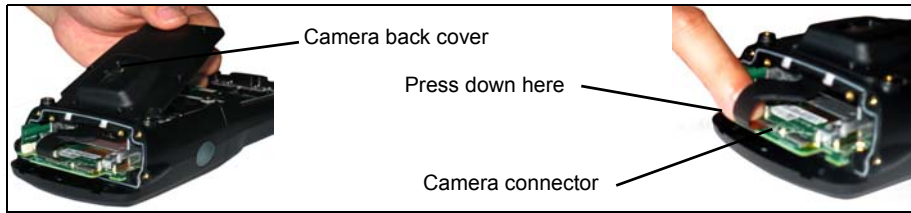
3. Slide the Diversity Antenna into the grooves along the right side of the unit.



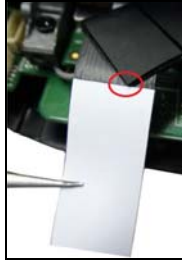
4. Route the cables as indicated on the board – insert the red Wi-Fi antenna into the socket labelled Red and the green GPS antenna into the socket labelled Green. Secure the cables by routing them through the clips.



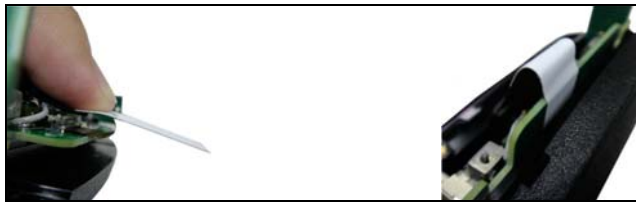
5. Insert the flex cable into the camera connector on the unit, using the white indicator to ensure proper alignment. Push the connector latch down to lock it in place.



6. Press down on the flex cable to ensure that the double-sided adhesive has secured the flex cable in place.
7. Peel the liner away from the supplied white adhesive tape, and align it with the edge of the rubber square on the flex cable.



8. Press down on the tape to attach it to the flex cable, and fold the tape under so that it sticks to the board.



9. Install the back cover using the 6 screws provided, torqued to 2.5 in-lbs.
10. Install the end-cap (x4 screws), torqued to 2.5 in-lbs.
11. Install the battery and battery cover.

For this installation, you will need the following:

- desktop docking station
- USB flash drive
- BooST script software – To receive the appropriate BooST script software release, contact:
www.zebra.com/support

Service Information

If you have a problem using the equipment, contact your facility's Technical or Systems Support. If there is a problem with the equipment, they will contact the Global Support Center at: <http://www.zebra.com/support>.



Zebra Technologies Corporation
Lincolnshire, IL U.S.A.
<http://www.zebra.com>

Zebra and the Zebra head graphic are registered trademarks of ZIH Corp. The Symbol logo is a registered trademark of Symbol Technologies, Inc., a Zebra Technologies Company.

© 2015 Symbol Technologies, Inc.

