

## SE965 (WA9015) & SE655 (WA9017) SLIM POD PISTOL GRIP COMPATIBLE INSTALLATION SHEET



**Warning:** *Installation of any components must be performed using appropriate anti-static devices. If unavailable, discharge body static by touching a grounded metallic object before opening any covers on the hand-held.*

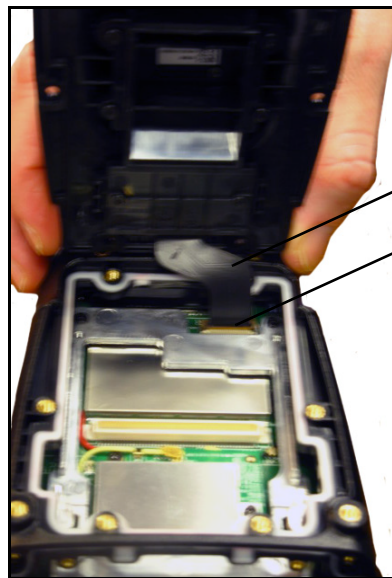
Along with the slim pod (either SE965 or SE655), each kit includes:

- M2.6x4L Torx T6 screws (x6)



**Important:** Always disconnect the unit from all power sources (battery & A/C power) before servicing components.

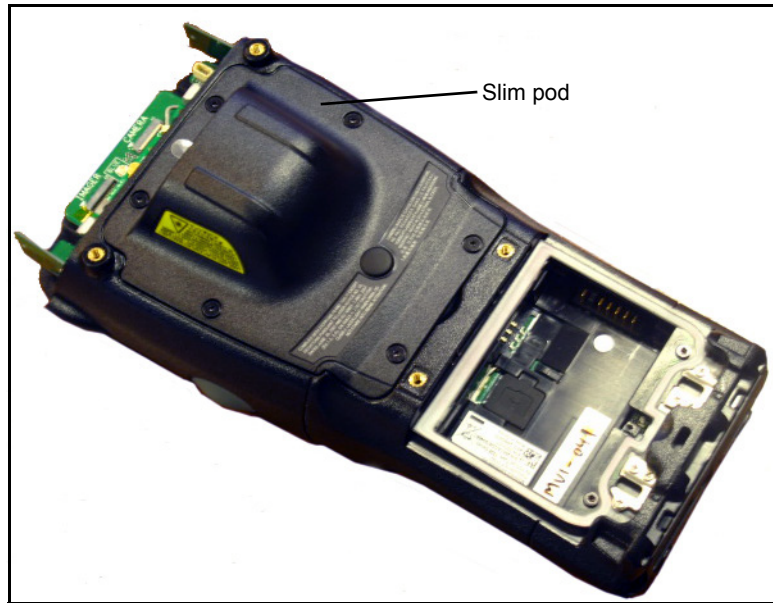
1. Remove the battery, existing end-cap (x4 screws), and back cover (x6 screws).
2. Connect the flex cable to the 1D scanner connector, and push down on the connector latch to lock the flex cable in place.



Flex cable

1D scanner  
connector

3. Attach the slim pod using the 6 screws provided, torqued to 2.6 in-lbs.



4. Install the end-cap using the 4 screws provided, torqued to 2.6 in-lbs.
5. Install the battery and battery cover.

**Once the slim pod is installed:**

1. Press **[Power]** **[FN/BLUE]** and the top-middle **[SCANNER]** button simultaneously to display the *Boot* menu.
2. Press the **[s]** key to display the *Scanner* menu. (For numeric keyboard users, press the **[FN/ORANGE]** key, press the **[7]** key **four times**, and then press the **[FN/ORANGE]** key again.)
3. Type the number corresponding with the slim pod you have installed – for example, type **67** to configure the *SE655* scanner.
4. Next, perform a *clean boot* – at the *Command>* prompt, type **.clean** (For numeric keyboard users, type **.25326**).

**Note:** Clean booting the device removes the add-on CAB file for Windows Embedded Handheld. It needs to be re-installed.

**To re-install the add-on CAB file:**

1. Download the add-on CAB file from *Ingenuity Working* to your Workabout Pro4.
2. Double-click the add-on CAB filename to install the CAB file.

The Workabout Pro4 restarts automatically to complete the installation.