

# SE4500 (WA9020) End-Cap INSTALLATION INSTRUCTIONS



**WARNING!** Installation of any components must be performed using appropriate anti-static devices. If unavailable, discharge body static by touching a grounded metallic object before opening any covers on the hand-held.

Along with the end-cap (SE4500), this kits includes the following:

- M2.6x8L Torx T6 screws (x4)

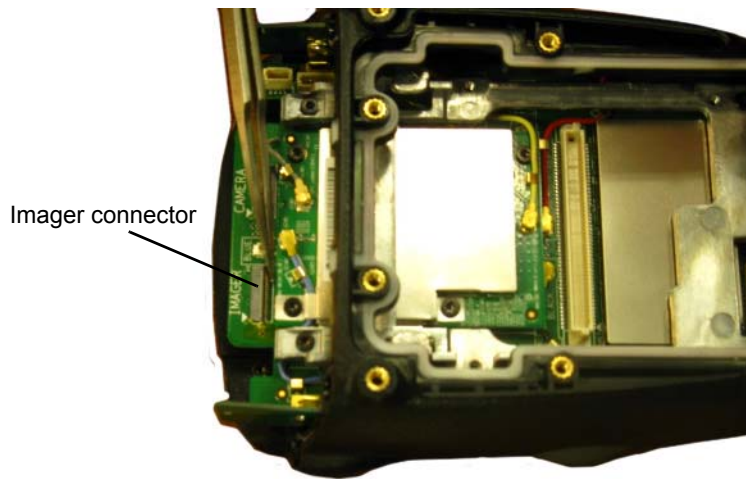


**WARNING!** Always disconnect the unit from all power sources (battery & A/C power) before servicing components.

1. Remove the existing end-cap (x4 screws), back cover (x6 screws), and battery.



2. Flip up the Imager connector latch at the top of the unit to unlock it.



3. Insert the end-cap flex cable into the Imager connector, and push the latch down to lock the flex cable in place.
4. Use the four screws torqued to 2.6 in-lbs. to secure the end-cap in place.




**WARNING!** As the end-cap is being attached, make certain the flex cable slides into the recess rather than bending upward.

5. Install the back cover (x6 screws) torqued to 2.6 in-lbs.
6. Install the battery and battery cover.

## Once the end-cap is installed:

1. Press and hold down the **[Power] [FN/BLUE]** and the top-middle **[SCANNER]** button simultaneously to display the *Boot* menu.
2. Press the **[s]** key to display the *Scanner* menu. (For numeric keyboard users, press the **[FN/ORANGE]** key, press the **[7]** key four times, and then press the **[FN/ORANGE]** key again.)
3. Type the number corresponding with the end-cap you have installed – **65** to configure the *SE4500 Imager*. Press **[ENTER]**.

4. Choose option **1** to run the main OS.
5. Press and hold down the **[Power] [FN/BLUE]** and the top-middle **[SCANNER]** button simultaneously to display the *Boot* menu again.  
  
✓ **NOTE** *It is critical that you execute the previous step to display the Boot menu again; if this step is omitted, the DataWedge Status Icon indicates that DataWedge is in idle mode  making the capture device unavailable.*
6. Next, perform a clean boot – at the *Command>* prompt, type **.clean** (for numeric keyboard users, type **.25326**). Press **[ENTER]**.  
  
✓ **NOTE** *For Windows Embedded Hand-Held 6.5, clean booting the device removes the add-on CAB file. It must be re-installed.*

#### To re-install the add-on CAB file:

1. Download the add-on CAB file from Ingenuity Working to your Workabout Pro4.
2. Double-click the add-on CAB filename to install the CAB file.

## Service Information

If you have a problem using the equipment, contact your facility's Technical or Systems Support. If there is a problem with the equipment, they will contact the Global Support Center at: <http://www.zebra.com/support>.



Zebra Technologies Corporation  
Lincolnshire, IL U.S.A.  
<http://www.zebra.com>

Zebra and the Zebra head graphic are registered trademarks of ZIH Corp. The Symbol logo is a registered trademark of Symbol Technologies, Inc., a Zebra Technologies Company.

© 2015 Symbol Technologies, Inc.

