

**WIRELESS FUSION
ENTERPRISE
MOBILITY SUITE
USER GUIDE FOR
VERSION X2.00**

***Wireless Fusion Enterprise Mobility Suite
User Guide for Version X2.00***

72E-1164268-02

Rev. A

March 2015

No part of this publication may be reproduced or used in any form, or by any electrical or mechanical means, without permission in writing from Zebra. This includes electronic or mechanical means, such as photocopying, recording, or information storage and retrieval systems. The material in this manual is subject to change without notice.

The software is provided strictly on an “as is” basis. All software, including firmware, furnished to the user is on a licensed basis. Zebra grants to the user a non-transferable and non-exclusive license to use each software or firmware program delivered hereunder (licensed program). Except as noted below, such license may not be assigned, sublicensed, or otherwise transferred by the user without prior written consent of Zebra. No right to copy a licensed program in whole or in part is granted, except as permitted under copyright law. The user shall not modify, merge, or incorporate any form or portion of a licensed program with other program material, create a derivative work from a licensed program, or use a licensed program in a network without written permission from Zebra. The user agrees to maintain Zebra’s copyright notice on the licensed programs delivered hereunder, and to include the same on any authorized copies it makes, in whole or in part. The user agrees not to decompile, disassemble, decode, or reverse engineer any licensed program delivered to the user or any portion thereof.

Zebra reserves the right to make changes to any software or product to improve reliability, function, or design.

Zebra does not assume any product liability arising out of, or in connection with, the application or use of any product, circuit, or application described herein.

No license is granted, either expressly or by implication, estoppel, or otherwise under any Zebra, intellectual property rights. An implied license only exists for equipment, circuits, and subsystems contained in Zebra products.

Revision History

Changes to the original manual are listed below:

Change	Date	Description
-01 Rev. A	03/08/13	Initial release.
-02 Rev. A	03/30/15	Zebra rebranding.

TABLE OF CONTENTS

Revision History	iii
------------------------	-----

About This Guide

Introduction	ix
Chapter Descriptions	ix
Notational Conventions	x
Related Documents	x

Chapter 1: Getting Started

Introduction	1-1
Configuring the Infrastructure	1-1
Fusion Overview	1-1
Windows Mobile Home Screen	1-2
Windows Classic Today Screen	1-2
Windows CE	1-2
Fusion Signal Strength Icon	1-3
Fusion Functions	1-4
Enable/Disable Radio	1-5
Hide Menu	1-5
Exit	1-6
Fusion Help	1-6
Minimum Setup	1-6

Chapter 2: Find WLAN Application

Introduction	2-1
--------------------	-----

Chapter 3: Manage Profiles Application

Introduction	3-1
Connect to a Profile	3-2
Editing a Profile	3-3

Creating a New Profile	3-3
Deleting a Profile	3-3
Ordering Profiles	3-3
Export a Profile	3-3
Profile Roaming	3-4

Chapter 4: Profile Editor Wizard

Introduction	4-1
Profile Name	4-1
Operating Mode	4-2
Ad-hoc	4-2
Security Mode	4-3
Authentication Type	4-5
Tunneled Authentication	4-5
User Certificate Selection	4-7
User Certificate Installation	4-7
Server Certificate Selection	4-9
Server Certificate Installation	4-10
User Name	4-11
Password	4-11
Advanced Identity	4-12
Credential Cache Options	4-13
Encryption	4-15
Hexadecimal Keys	4-17
Pass-phrase Dialog	4-18
IPv4 Address Entry	4-19
Transmit Power	4-22
Battery Usage	4-23
Performance Settings	4-24

Chapter 5: Manage Certificates Application

Introduction	5-1
Certificate Properties	5-2
Import a Certificate	5-3
Delete a Certificate	5-5

Chapter 6: Manage PACs Application

Introduction	6-1
PAC Properties	6-2
Delete PAC	6-2
Import PAC	6-3

Chapter 7: Options

Introduction	7-1
Op (Operating) Mode Filtering	7-1
Regulatory	7-2
Band/Channel Selection	7-3

802.11 Options	7-4
System Options	7-5
Auto PAC Settings	7-5
IPv6	7-6
Change Password	7-6
Import/Export	7-7
Data Management	7-8

Chapter 8: Wireless Status Application

Introduction	8-1
Signal Strength Window	8-2
Current Profile Window	8-3
IPv4 Status Window	8-4
IPv6 Status Window	8-5
Wireless Log Window	8-7
Saving a Log	8-7
Clearing the Log	8-8
Logos & Certifications Window	8-8
Versions Window	8-9

Chapter 9: Wireless Diagnostics Application

Introduction	9-1
ICMP Ping Window	9-2
Graphs	9-3
Trace Route Window	9-3
Known APs Window	9-4

Chapter 10: Log On/Off Application

Introduction	10-1
Logging On	10-2
Logging Off	10-3

Chapter 11: Configuration Persistence

Introduction	11-1
Exporting Fusion Configuration	11-1
Export Data	11-2
Import Data	11-3
Returning to Factory Default Settings	11-4

Chapter 12: Configuration Examples

Introduction	12-1
EAP-FAST/MS Chap v2 Authentication	12-1

Chapter 13: No User Interface Features

Network Policy Configuration Service	13-1
--	------

Glossary

Index

ABOUT THIS GUIDE

Introduction

This guide provides information about using the Fusion Wireless Companion software on a Zebra mobile computer.



NOTE Screens and windows pictured in this guide are samples and can differ from actual screens. This guide describes the functionality using Windows Mobile operating system.

Chapter Descriptions

Topics covered in this guide are as follows:

- [Chapter 1, Getting Started](#) provides an overview of the Fusion Wireless Companion software.
- [Chapter 2, Find WLAN Application](#) provides information about the Find WLAN application.
- [Chapter 3, Manage Profiles Application](#) provides information about managing profiles.
- [Chapter 4, Profile Editor Wizard](#) explains how to configure a profile.
- [Chapter 5, Manage Certificates Application](#) explains how to manage certificates.
- [Chapter 6, Manage PACs Application](#) explains how to manage PACs.
- [Chapter 7, Options](#) explains how to configure the Fusion options.
- [Chapter 8, Wireless Status Application](#) describes how to get status about the wireless connection.
- [Chapter 9, Wireless Diagnostics Application](#) describes tools to help diagnose problems with the wireless connection.
- [Chapter 10, Log On/Off Application](#) explains how to log on and off the wireless network.
- [Chapter 11, Configuration Persistence](#) explains how to persist Fusion data and settings across a clean/cold boot.
- [Chapter 12, Configuration Examples](#) provides examples for setting up profiles with various authentication and encryption types.

- [Chapter 13, No User Interface Features](#) describes the features of Fusion that can be turned on and off but do not have a standard Fusion user interface.

Notational Conventions

The following conventions are used in this document:

- *Italics* are used to highlight the following:
 - Chapters and sections in this and related documents
 - Dialog box, window and screen names
 - Icons on a screen.
- **Bold** text is used to highlight the following:
 - Key names on a keypad
 - Button names on a screen or window.
 - Drop-down list and list box names
 - Check box and radio button names
- bullets (•) indicate:
 - Action items
 - Lists of alternatives
 - Lists of required steps that are not necessarily sequential
- Sequential lists (e.g., those that describe step-by-step procedures) appear as numbered lists.



NOTE This symbol indicates something of special interest or importance to the reader. Failure to read the note will not result in physical harm to the reader, equipment or data.



CAUTION This symbol indicates that if this information is ignored, the possibility of data or material damage may occur.



WARNING! This symbol indicates that if this information is ignored the possibility that serious personal injury may occur.

Related Documents

- *Enterprise Mobility Developer Kit for C (EMDK for C)*, available at: <http://www.zebra.com/support>.
- ActiveSync 4.x software, available at: <http://www.microsoft.com>.

For the latest version of this guide and all guides, go to: <http://www.zebra.com/support>.

CHAPTER 1 GETTING STARTED

Introduction

Each Zebra mobile computer has a wireless local area network (WLAN) interface. This WLAN interface is managed by the Fusion Wireless Companion application. The software allows the user to configure and control the wireless radio in order to securely connect to the WLAN infrastructure. This guide enables the user to configure the mobile computer so that it can connect properly to a WLAN. This guide describes how to use the Fusion software.

Configuring the Infrastructure

WLANs allow mobile computers to communicate wirelessly. Before using the mobile computer on a WLAN, the facility must be set up with the required hardware to run the WLAN (sometimes known as infrastructure). The infrastructure and the mobile computer must both be properly configured to enable this communication.

Refer to the documentation provided with the infrastructure (access points (APs), access ports, switches, Radius servers, etc.) for instructions on how to set up the infrastructure.

Once you have set up the infrastructure to enforce your chosen WLAN security scheme, use the Fusion software to configure the mobile computer to match.

Fusion Overview

The Fusion software contains applications with which to create wireless profiles. Each profile specifies the security parameters to use for connecting to a particular WLAN as identified by its ESSID. The Fusion software also allows the user to control which profile out of a set of profiles is used to connect. Other Fusion applications allow the user to monitor the status of the current WLAN connection and to invoke diagnostic tools for troubleshooting.

The Fusion applications are accessed differently depending upon the operating system configuration, Windows Mobile 6.5, by default, supports a Windows Home screen as well as the classic Mobile 6.1 Today screen.

Windows Mobile Home Screen

When the Windows Mobile Home screen is configured, a Fusion plug-in displays on the Home screen to provide information about signal strength and profile name.



Figure 1-1 Windows Mobile Home Screen with Fusion Plug-in

Tap the **Fusion** tile to open the **Wireless Launcher** window.

Windows Classic Today Screen

When the Windows Mobile Classic Today screen is configured and Fusion is managing the WLAN, a Fusion signal strength icon appears in the Task tray.

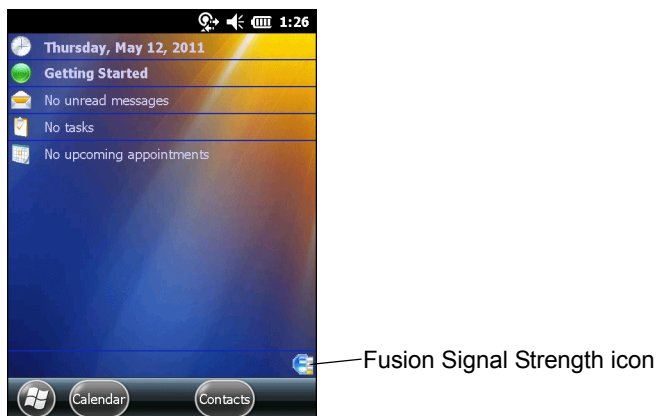


Figure 1-2 Windows Mobile Classic Today Screen with Fusion

Windows CE

A Fusion signal strength icon appears in the Task tray.

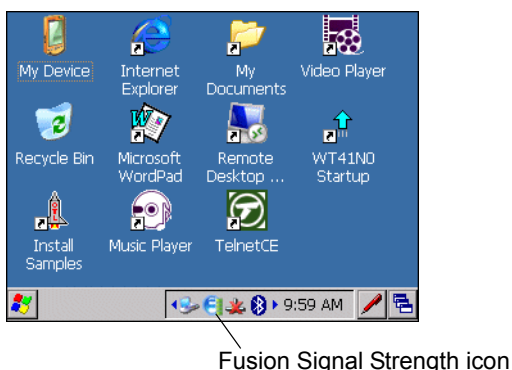


Figure 1-3 Windows CE Screen

Select the icon to open the **Wireless Launcher** menu.

Fusion Signal Strength Icon

The shape and color of the **Signal Strength** icon provides information about the received wireless signal strength for the WLAN connection. [Table 1-1](#) describes the different icons and their meanings.

Table 1-1 Signal Strength Icon Descriptions

Fusion Icon	Status	Description
	Excellent signal strength	WLAN network is ready to use.
	Very good signal strength	WLAN network is ready to use.
	Good signal strength	WLAN network is ready to use.
	Fair signal strength	WLAN network is ready to use. Notify the network administrator that the signal strength is only "Fair".
	Poor signal strength	WLAN network is ready to use. Performance may not be optimum. Notify the network administrator that the signal strength is "Poor".
	Out-of-network range (not associated)	No WLAN network connection. Notify the network administrator.
	The WLAN radio is disabled.	The WLAN radio is disabled. To enable, choose Enable Radio from the Wireless Applications menu.
None	The Wireless Launcher application was exited.	The Wireless Launcher application has been closed. See the Fusion Functions paragraphs below for how to restart the Wireless Launcher .

Fusion Functions

Tap the **Signal Strength** icon or **Fusion** tile or tap **Start > Wireless Companion > Wireless Launcher** icon to display the **Wireless Launcher** menu.

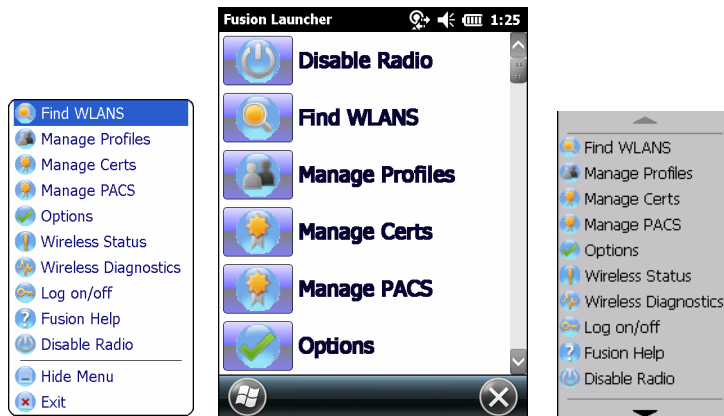


Figure 1-4 Wireless Launcher Menu

Many of the items in the menu invoke one of the Fusion applications. These menu items and their corresponding applications are summarized in [Table 1-2](#).

Table 1-2 Supported Applications

Application	Description
Find WLANs	Invokes the Find WLANs application which displays a list of the WLANs available in your area.
Manage Profiles	Invokes the Manage Profiles application (which includes the Profile Editor Wizard) to manage and edit your list of WLAN profiles.
Manage Certs	Invokes the Certificate Manager application which allows you to manage certificates used for authentication.
Manage PACs	Invokes the PAC Manager application which helps you manage the list of Protected Access Credentials used with EAP-FAST authentication.
Options	Invokes the Options application which allows you to configure the Fusion option settings.
Wireless Status	Invokes the Wireless Status application which allows you to view the status of the current wireless connection.
Wireless Diagnostics	Invokes the Wireless Diagnostics application which provides tools with which to diagnose problems with the wireless connection.
Log On/Off	Invokes the Network Login dialog which allows you to log on to a particular profile or to log off from the currently active profile.
Fusion Help	Invokes Fusion Help application which provides on-device Fusion Help (Windows Mobile only).

Each of the applications have a chapter devoted to it in this guide.

Additional **Wireless Launcher** menu entries include:

- Enable/Disable Radio
- Hide Menu
- Exit.

Enable/Disable Radio

To turn the WLAN radio off, tap the **Signal Strength** icon and select **Disable Radio**. tap the **Fusion** tile or tap **Start > Wireless Companion > Wireless Launcher** icon and select **Disable Radio**.

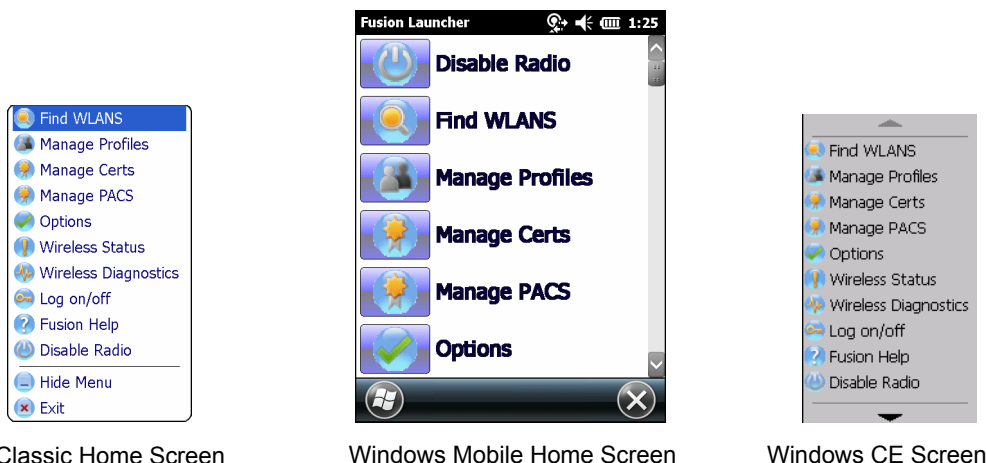


Figure 1-5 *Disable Radio*

To turn the WLAN radio on, tap the **Fusion** tile or tap **Start > Wireless Companion > Wireless Launcher** icon and select **Enable Radio**.

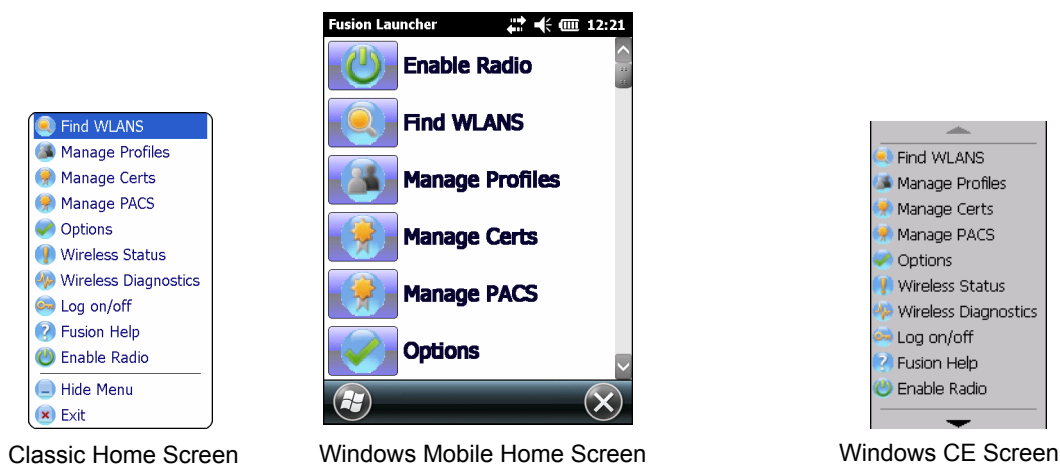


Figure 1-6 *Enable Radio*

Also note that the radio may be enabled or disabled using the **Wireless Manager** screen on Windows Mobile devices.

Hide Menu

To hide the menu tap **Hide** in the menu.

Exit

Tap **Exit** to close the menu and exit the **Wireless Launcher** application. A dialog appears to confirm exiting the Wireless Launcher application. Tap **Yes** to exit. This closes the **Wireless Launcher** application and removes the **Signal Strength** icon from the screen.

To restart the **Wireless Launcher** application and redisplay the **Signal Strength** icon:

1. Tap **Start > Programs > Wireless Companion icon > Wireless Launch icon**.
2. Tap **ok** twice to close the windows.
3. The **Signal Strength** icon appears on the screen.

Fusion Help

On Windows Mobile devices, to access the on-device Fusion Help tap **Start > Wireless Companion > Fusion Help**.

Minimum Setup

Below is a list of the minimum effort to achieve a wireless connection. Note that there are many discrete nuances that may affect the performance of your wireless connection that might be missed if you do not consider them carefully.

You will need to create a profile. It is recommended that you read the profile editor chapter.

1. Find out from your IT administrator what the connection settings should be (Extended Service Set Identifier (ESSID), Enterprise or Personal, authentication type, tunnel type, certificate requirements, Protected Access Credentials (PAC) requirements). Note that not all of the items listed may be relevant.
2. Create the profile using the information provided by the IT administrator.
3. Enter the **Manage Profile** screen, select the profile (press and hold), and select the **Connect** option in the context menu that appears.

CHAPTER 2 FIND WLAN APPLICATION

Introduction

Use the **Find WLANs** application to discover available networks in the vicinity of your and mobile computer. To open the **Find WLANs** application, tap the **Signal Strength** icon > **Find WLANs**. The **Find WLANs** window displays.

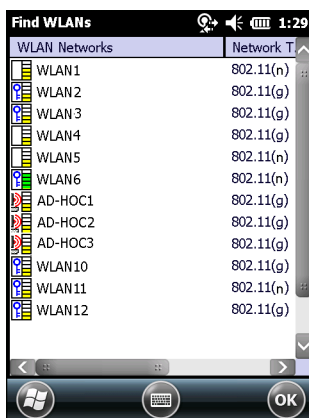


Figure 2-1 Find WLANs Window

The **Find WLANs** list displays:

- WLAN Networks - Available wireless networks, (both infrastructure and Ad-hoc) with icons that indicate signal strength and encryption. The signal strength and encryption icons are described in [Table 2-1](#) and [Table 2-2](#).
- Network Type - Type of network. 802.11(a), 802.11(b), 802.11(g) or 802.11(n).
- Channel - Channel on which the AP/Ad-hoc peer is transmitting.
- Signal Strength - The signal strength of the signal from the AP/Ad-hoc peer.

Table 2-1 *Signal Strength Icon*










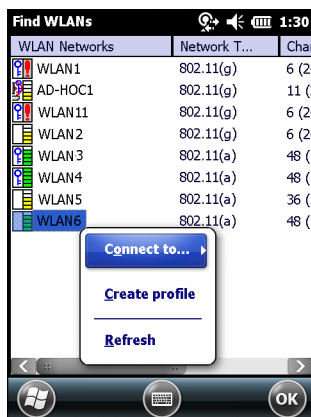
Icon	Description
	Excellent signal
	Very good signal
	Good signal
	Fair signal
	Poor signal
	Out of range or no signal

Table 2-2 *Encryption Icon*

Icon	Description
	No encryption. WLAN is an infrastructure network.
	WLAN is an Ad-hoc network.
	WLAN uses encryption. WLAN is an infrastructure network.

Tap-and-hold on a WLAN network to open a pop-up menu which provides three options: **Connect to**, **Create profile** and **Refresh**.

**Figure 2-2** *Find WLANs Menu*

NOTE The number of WLANs (ESSIDs) that can be detected by the wireless radio at one time is limited. If you have a large number of WLANs active in your area, the Find WLANs window may not display them all.

The scan triggered by Find WLAN is at a lower priority compared to a roam scan. If the device is attempting to roam then a Find WLAN done at the exact same time may result in showing only the currently connected AP. Redoing the Find WLAN command shows the proper full results.

If you do not see your ESSID, try a **Refresh**. If your ESSID is still not displayed and you wish to create or connect to a profile for it, you will need to use the **Manage Profiles** application.

Select **Connect to** to view the list of existing profiles matching the select ESSID. The mobile computer connects to the given profile upon selection.

Select **Create profile** to create a new WLAN profile for that network. This starts the **Profile Editor Wizard** which allows you to configure the security parameters that your mobile computer will use for the selected network. After editing the profile, the mobile computer automatically connects to this new profile.



NOTE A warning displays when connecting to an unsecure (or open) network via the **Find WLANs** application. For open WLANs, the profile's settings will take on automatically generated default values. If you wish to manually configure the settings, uncheck the **Use Default configuration** checkbox.

Figure 2-3 *Warning Notice*

Select **Refresh** to refresh the WLAN list.

CHAPTER 3 MANAGE PROFILES APPLICATION

Introduction

A profile is a set of operating parameters that define how the mobile computer will connect to a specific WLAN. Create different profiles for use in different network environments. The **Manage Profiles** application displays the list of user-created wireless profiles. You may have a maximum of 32 profiles at any one time. To open the **Manage Profiles** application, tap the **Signal Strength** icon > **Manage Profiles**.

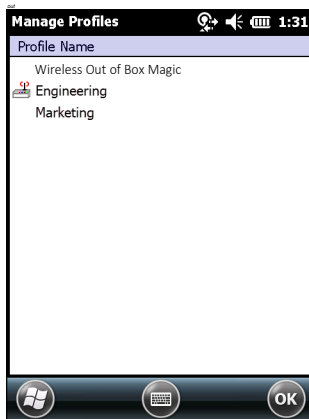


Figure 3-1 *Manage Profiles Window*

Icons next to each profile identify the profile's current state.

Table 3-1 *Profile Icons*



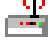




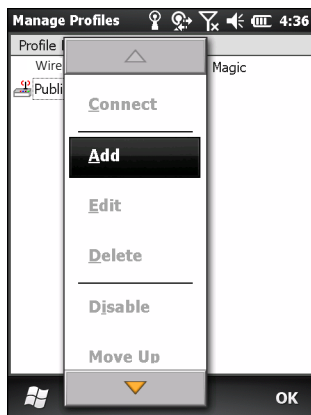
Icon	Description
No Icon	Profile is not selected, but enabled.
	Profile is disabled.
	Profile is cancelled. A cancelled profile is disabled until you connect to it, either by selecting Connect from the pop-up menu, or by using the Log On/Off application.

Table 3-1 *Profile Icons (Continued)*

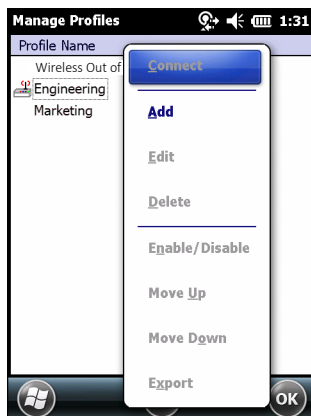
Icon	Description
	Profile is in use and describes an infrastructure profile not using security.
	Profile is in use and describes an infrastructure profile using security.
	Profile is in use and describes an ad-hoc profile not using security.
	Profile is in use and describes an ad-hoc profile using security.
	Profile is not valid in the regulatory domain in which the device is currently operating.

You can perform various operations on the profiles in the list. To operate on an existing profile, tap and hold it in the list and select an option from the menu to connect, edit, disable (enable), or delete the profile. (Note that the **Disable** menu item changes to **Enable** if the profile is already disabled.)

**Figure 3-2** *Manage Profiles Context Menu*

Connect to a Profile

Tap and hold a profile and select **Connect** from the pop-up menu to set this as the active profile.

**Figure 3-3** *Manage Profiles - Connect*

Once selected, the mobile computer uses the settings configured in the profile (i.e., authentication, encryption, ESSID, IP Config, power consumption, etc.) to connect to a WLAN.

Editing a Profile

Tap and hold a profile and select **Edit** from the pop-up menu. This will invoke the **Profile Wizard** where the profile settings are configured.

Creating a New Profile

To create a new profile tap and hold anywhere in the **Manage Profiles** window and select **Add** from the pop-up menu.

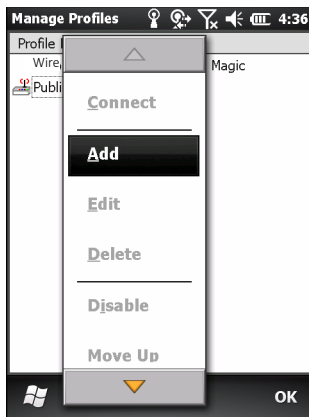


Figure 3-4 *Manage Profiles - Add*

Selecting **Add** invokes the **Profile Wizard** wherein the settings for the new profile are configured, such as profile name, ESSID, security, network address information, and the power consumption level.

Deleting a Profile

To delete a profile from the list, tap and hold the profile and select **Delete** from the pop-up menu. A confirmation dialog box appears.

Ordering Profiles

The profiles are listed in priority order for use by the automatic Profile Roaming feature (see [Profile Roaming](#) below). Change the order by moving profiles up or down. Tap and hold a profile from the list and select **Move Up** or **Move Down** from the pop-up menu.

Export a Profile

To export a profile to a registry file, tap and hold a profile from the list and select **Export** from the pop-up menu. The **Save As** dialog box displays with the **Application** folder and a default name of `WCS_PROFILE{profile GUID}.reg` (Globally Unique Identifier).

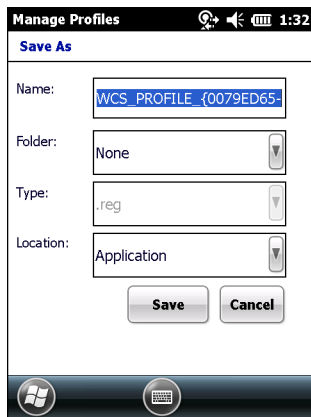


Figure 3-5 Save As Dialog Box

If required, change the name in the **Name** field and tap **Save**. A confirmation dialog box appears after the export completes.

Profile Roaming

Profile Roaming attempts to automatically select and connect to a profile from the profile list displayed in the **Manage Profiles** window. The Profile Roaming algorithm uses the order of the profiles in the profile list to determine the order in which profiles are tried.



NOTE Profile Roaming must be enabled in the **Options** application. See [Chapter 7, Options](#).

The Profile Roaming algorithm makes two passes through the profile list. The first pass attempts to connect only to profiles that specify ESSIDs that can be detected by the wireless radio. If no connection is made, a second pass through the list is performed attempting to connect to those profiles that were not tried in the first pass. The Profile Roaming algorithm will only attempt to connect to a profile for which it is not necessary to prompt the user for credentials (i.e., username and password). This includes:

- A profile that does not require credentials.
- A device profile. A device profile is one in which the username and password have been pre-entered directly into the profile. (A profile with the username specified but with the password field left empty is still considered a device profile since an empty password is considered a valid password.)
- A user profile with cached credentials. A user profile is one in which the username and password have not been pre-entered into the profile. A profile has cached credentials if the user has entered credentials for the profile via the Network Login dialog. When a profile has cached credentials, the user is said to have logged on to the profile. See [Chapter 10, Log On/Off Application](#) for more information.

The Profile Roaming algorithm will not attempt to connect to:

- A profile that specifies EAP-GTC for its Tunnel Authentication Type and Token (as opposed to Static) for its password type. See [Tunneled Authentication on page 4-5](#) for more information.
- A user profile without cached credentials.
- A user profile that has cached credentials but that also has the At-Connect option enabled. See [Credential Cache Options on page 4-13](#) for more information.

- A device profile that has cached credentials because the user has logged on to it (called a user-override profile), but that also has the **At-Connect** option enabled.
- A profile that has been disabled.
- A profile that has been cancelled.

The Profile Roaming algorithm is invoked whenever the mobile computer becomes disconnected (disassociated) from the current WLAN.

CHAPTER 4 PROFILE EDITOR WIZARD

Introduction

Use the **Profile Editor Wizard** to create a new WLAN profile or edit an existing profile. If editing a profile, the fields reflect the current settings for that profile. If creating a new profile, default values appear in the fields.

Navigate through the wizard using the **Next** and **Back** buttons. An indicator in the bottom left corner tracks the number of pages traversed and total number of pages required to complete the current profile configuration. Tap **X** or the **Cancel** button to quit. On the confirmation dialog box, tap **No** to return to the wizard or tap **Yes** to quit and return to the **Manage Profiles** window. See [Chapter 3, Manage Profiles Application](#) for instructions on navigating to and from the **Profile Editor Wizard**.

Profile Name

In the Profile Name dialog box in the Profile Editor Wizard, enter the profile name and the ESSID.

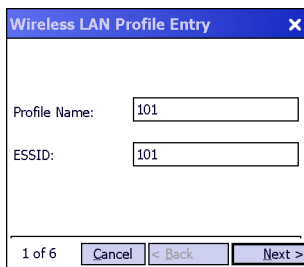


Figure 4-1 *Profile Name Dialog Box*

Table 4-1 Profile Name Fields

Field	Description
Profile Name	The user-friendly name you wish to give the profile. The profile name is limited to 64 characters. Example: The Public LAN.
ESSID	The ESSID is the 802.11 extended service set identifier. The ESSID is a 32-character (maximum) case sensitive string identifying the WLAN, and must match the AP ESSID for the mobile computer to communicate with the AP.

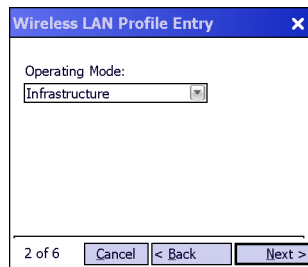


NOTE Two profiles with the same user friendly name are acceptable but not recommended.

Tap **Next**. The **Operating Mode** dialog box displays.

Operating Mode

Use the **Operating Mode** dialog box to select the operating mode (Infrastructure or Ad-hoc) and the country location.

**Figure 4-2** Operating Mode Dialog Box**Table 4-2** Operating Mode Fields

Field	Description
Operating Mode	Select Infrastructure to enable the mobile computer to transmit and receive data with an AP. Infrastructure is the default mode. Select Ad-hoc to enable the mobile computer to form its own local network where mobile computers communicate peer-to-peer without APs using a shared ESSID.

Tap **Next**. If **Ad-hoc** mode was selected the **Ad-hoc Channel** dialog box displays. If **Infrastructure** mode was selected the **Security Mode** dialog box displays. See [Encryption on page 4-15](#) for instruction on setting up authentication.

Ad-hoc

Use the **Ad-hoc Channel** dialog box to configure the required information to create an Ad-hoc profile. This dialog box does not appear if you selected **Infrastructure** mode.

1. Select a channel number from the **Channel** drop-down list.

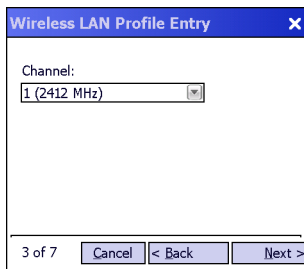


Figure 4-3 Ad-hoc Channel Selection Dialog Box

Table 4-3 Ad-hoc Channels

Band	Channel	Frequency
2.4 GHz	1	2412 MHz
	2	2417 MHz
	3	2422 MHz
	4	2427 MHz
	5	2432 MHz
	6	2437 MHz
	7	2442 MHz
	8	2447 MHz
	9	2452 MHz
	10	2457 MHz
	11	2462 MHz

2. Tap **Next**. The **Encryption** dialog box displays. See [Encryption on page 4-15](#) for encryption options.

Security Mode



NOTE **Security Mode** dialog box only appears when **Infrastructure** mode is selected in the **Operating Mode** dialog box.

Use the **Security Mode** dialog box to configure the Security and Authentication methods. If **Ad-hoc** mode is selected, this dialog box is not available and authentication is set to **None** by default.

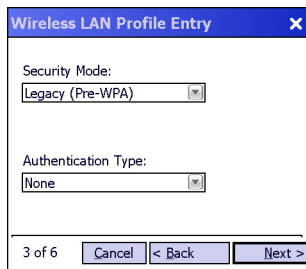


Figure 4-4 Authentication Dialog Box

Select the security mode from the **Security Mode** drop-down list. The selection chosen affects the availability of other choices for Authentication Type and Encryption methods.

- Legacy (Pre - WPA) - This mode allows the user to configure protocols not available in the other Security Mode selections: Open authentication / encryption; Open authentication with WEP-40 or WEP-104; and 802.1X authentications that use WEP-104 Encryption.
- WPA - Personal - This mode allows the user to configure a WPA-TKIP-PSK protocol.
- WPA2 - Personal - This mode allows the user to configure WPA2-PSK protocols with TKIP or Advanced Encryption Standard (AES) encryption method.
- WPA - Enterprise - This mode allows the user to configure profiles with 802.1X Authentication that uses WPA with TKIP encryption method.
- WPA2 - Enterprise - This mode allows the user to configure profiles with 802.1X Authentication that uses WPA2 with TKIP or AES encryption method.

Table 4-4 Security Modes

Security Mode	Authentication Types	Encryption Types	Pass-phrase/Hexkey Configuration
Legacy (Pre-WPA)	None, EAP-TLS, EAP-FAST, PEAP, LEAP, TTLS	Open, WEP-40 (40/24), WEP-104 (104/24)	Enabled for Authentication Type "None." User input required with pass-phrase/hex key configuration. Disabled for all other Authentication Types. No user input required for encryption key.
WPA - Personal	None	TKIP	Enabled. User input required with pass-phrase/hex key configuration.
WPA2 - Personal	None	TKIP AES	Enabled. User input required with pass-phrase/hex key configuration.
WPA - Enterprise	EAP-TLS, EAP-FAST, PEAP, LEAP, TTLS	TKIP	Disabled. No user input required for encryption key.
WPA2 - Enterprise	EAP-TLS, EAP-FAST, PEAP, LEAP, TTLS	TKIP AES	Disabled. No user input required for encryption key.

Authentication Type

Select an available authentication type from the drop-down list. The options listed in the drop-down list are based on the selected Security Mode as shown in [Table 4-4](#).

The authentication types, other than **None**, all use IEEE 802.1x authentication to ensure that only valid users and sometimes servers can connect to the network. Each authentication type uses a different scheme using various combinations of tunnels, username/passwords, user certificates, server certificates, and Protected Access Credentials (PACs).

Table 4-5 *Authentication Options*

Authentication	Description
None	Use this setting when user authentication is not required. A global key mechanism, WEP or PSK, is still applied when this option is selected.
EAP-TLS	Select this option to enable EAP-TLS authentication. A user certificate is required; validating the server certificate is optional.
EAP-FAST	Select this option to enable EAP-FAST authentication. This type uses a Protected Access Credential (PAC) to establish a tunnel and then uses the selected tunnel type to verify credentials. PACs are handled behind the scenes, transparently to the user. Automatic PAC provisioning can, depending on the tunnel type and the RADIUS server settings, require a user certificate and the validation of a server certificate.
PEAP	Select this option to enable PEAP authentication. This type establishes a tunnel and then based on the tunnel type, uses a user certificate and/or a username/password. Validating the server certificate is optional.
LEAP	Select this option to enable LEAP authentication. This type does not establish a tunnel. It requires a username and password.
TTLS	Select this option to enable TTLS authentication. This type establishes a tunnel in which the username/password are verified. A user certificate may optionally be used. Validating the server certificate is also optional.

Tap **Next**. Selecting **PEAP**, **TTLS** or **EAP-FAST** displays the **Tunneled Authentication Type** dialog box. Selecting **None** displays the **Encryption** dialog box. Selecting **EAP-TLS** displays the **Installed User Certs** dialog box. Selecting **LEAP** displays the **User Name** dialog box.

Tunneled Authentication

Use the **Tunneled Authentication Type** dialog box to select the tunneled authentication options. The content of the dialog will differ depending on the **Authentication Type** chosen.

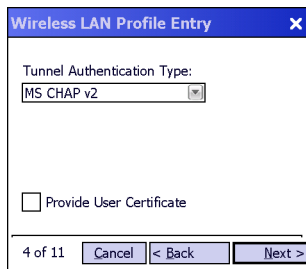


Figure 4-5 Tunnel Authentication Dialog Box

To select a tunneled authentication type:

1. Select a tunneled authentication type from the drop-down list. See [Table 4-6](#) for the Tunnel authentication options for each authentication type.
2. Select the **Provide User Certificate** check box if a certificate is required. If the TLS tunnel type that requires a user certificate is selected, the check box is already selected.
3. Tap **Next**. The **Installed User Certificates** dialog box appears.

Table 4-6 Tunnel Authentication Options

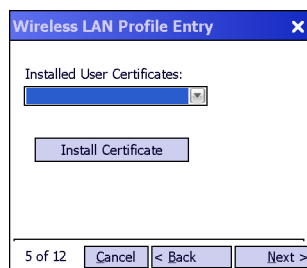
Tunneled Authentication	Authentication Type			Description
	PEAP	TTLS	EAP-FAST	
CHAP		X		Challenge Handshake Authentication Protocol (CHAP) is one of the two main authentication protocols used to verify the user name and password for Point-to-Point (PPP) Internet connections. CHAP is more secure than Password Authentication Protocol (PAP) because it performs a three way handshake during the initial link establishment between the home and remote machines. It can also repeat the authentication anytime after the link is established.
EAP-GTC	X		X	Extensible Authentication Protocol-Generic Token Card (EAP-GTC) is used during phase 2 of the authentication process. This method uses a time-synchronized hardware or software token generator, often in conjunction with a user PIN, to create a one-time password.
MD5		X		Message Digest-5 (MD5) is an authentication algorithm developed by RSA. MD5 generates a 128-bit message digest using a 128-bit key, IPSec truncates the message digest to 96 bits.
MS CHAP		X		Microsoft Challenge Handshake Authentication Protocol (MS CHAP) is an implementation of the CHAP protocol that Microsoft created to authenticate remote Windows workstations. MS CHAP is identical to CHAP, except that MS CHAP is based on the encryption and hashing algorithms used by Windows networks, and the MS CHAP response to a challenge is in a format optimized for compatibility with Windows operating systems.

Table 4-6 *Tunneled Authentication Options (Continued)*

Tunneled Authentication	Authentication Type			Description
	PEAP	TTLS	EAP-FAST	
MS CHAP v2	X	X	X	Microsoft Challenge Handshake Authentication Protocol version 2 (MS CHAP v2) is a password-based, challenge-response, mutual authentication protocol that uses the industry-standard Message Digest 4 (MD4) and Data Encryption Standard (DES) algorithms to encrypt responses. The authenticating server challenges the access client and the access client challenges the authenticating server. If either challenge is not correctly answered, the connection is rejected. MS CHAP v2 was originally designed by Microsoft as a PPP authentication protocol to provide better protection for dial-up and virtual private network (VPN) connections. With Windows XP SP1, Windows XP SP2, Windows Server 2003, and Windows 2000 SP4, MS CHAP v2 is also an EAP type.
PAP		X		PAP has two variations: PAP and CHAP PAP. It verifies a user name and password for PPP Internet connections, but it is not as secure as CHAP, since it works only to establish the initial link. PAP is also more vulnerable to attack because it sends authentication packets throughout the network. Nevertheless, PAP is more commonly used than CHAP to log in to a remote host like an Internet service provider.
TLS	X		X	EAP-TLS is used during phase 2 of the authentication process. This method uses a user certificate to authenticate.

User Certificate Selection

If a User Certificate is required to support the chosen security scheme then the **Installed User Certificates** dialog box displays. Select a certificate from the drop-down list of currently installed certificates before proceeding. The selected certificate's name appears in the drop-down list. If the required certificate is not in the list, install it.

**Figure 4-6** *Installed User Certificates Dialog Box*

User Certificate Installation



NOTE User Certificates can also be installed using the **Manage Certificates** Application. See [Chapter 5, Manage Certificates Application](#) for more information.

There are two methods available to install a user certificate for authentication. The first is to obtain the user certificate from the Certificate Authority (CA). This requires connectivity with that CA. The second method is to install the user certificate from a .pfx file that has been manually placed on the device.

To install a user certificate from the CA:

1. Tap **Install Certificate**. The **Import Certificate** dialog box appears.

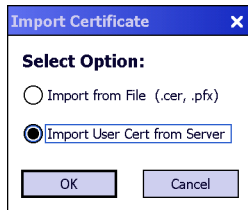


Figure 4-7 *Import Certificate Dialog Box*

2. Select **Import User Cert from Server** and tap **OK**. The **Install from Server** dialog box appears.

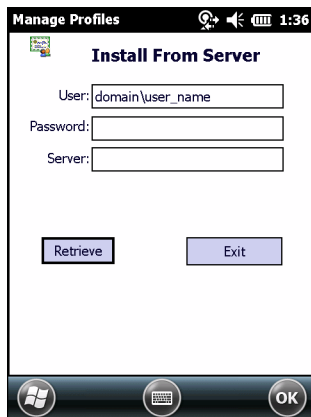


Figure 4-8 *Install from Server Dialog Box*

3. Enter the User:, Password: and Server: information in their respective text boxes.
4. Tap **Retrieve**. A Progress dialog indicates the status of the certificate retrieval or tap **Exit** to exit.

After the installation completes, the **Installed User Certs** dialog box displays and the certificate is available in the drop-down for selection.



NOTE To successfully install a user certificate from a server, the mobile computer must already be connected to a network from which that server is accessible.

To install a user certificate from a .pfx file:

1. Tap **Install Certificate**. The **Import Certificate** dialog box appears.

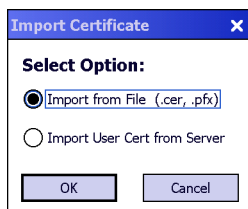


Figure 4-9 *Import Certificate Dialog Box*

2. Choose **Import from File** and tap **OK**.

The **Open** dialog box appears.

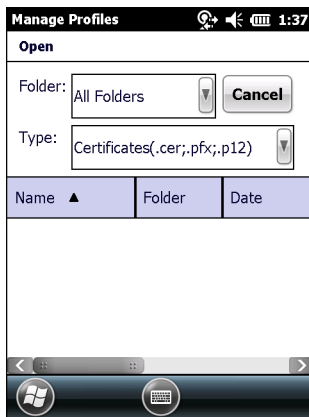


Figure 4-10 Open Dialog Box

3. In the **Type** drop-down list, select **Certificates (.cer, .pfx)**.



NOTE Installing a user certificate from a file requires that the file be of type ***.pfx**. WAPI user certificates are issued as .cer file extensions.

4. Browse to the desired .pfx file and tap **OK**.

The **Personal Certificate** dialog box appears.

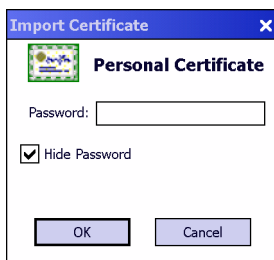


Figure 4-11 Personal Certificate Window

5. If the .pfx file is password protected, enter the appropriate password; else leave the password fields empty. Deselect the **Hide Password** check box to see the password characters as they are entered.
6. Tap **OK**. The certificate(s) are imported.

Server Certificate Selection

If the user selects the **Validate Server Certificate** check box, a server certificate is required. Select a certificate from the drop-down list of currently installed certificates in the **Installed Server Certificates** dialog box. An hour glass may appear as the wizard populates the existing certificate list. If the required certificate is not listed, install it.

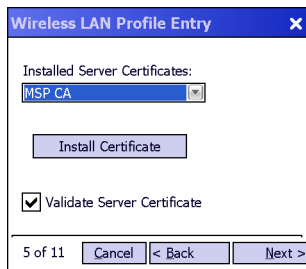


Figure 4-12 *Installed Server Certificates Dialog Box*

Server Certificate Installation

- ✓ **NOTE** Server Certificates can also be installed using the **Manage Certificates** Application. See [Chapter 5, Manage Certificates Application](#) for more information.

A server certificate can only be installed from either a .cer file or a .pfx file that has been loaded onto the device. The certificate file can be loaded either manually or via a web-browser-based interface to the Certificate Authority (CA).

- ✓ **NOTE** To successfully install a server certificate from a CA using a web-browser, the mobile computer must already be connected to a network from which that CA is accessible. The procedure you should follow to download the server certificate from the CA is beyond the scope of this guide.

To install a server certificate for authentication:

1. Tap **Install Certificate**. The **Import Certificate** dialog box appears. Choose **Import from File (.cer, .pfx)** and tap **OK**.

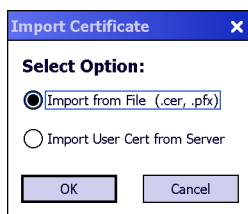


Figure 4-13 *Import Certificates Dialog Box*

2. A dialog box appears that lists the certificate files found with the default extension.

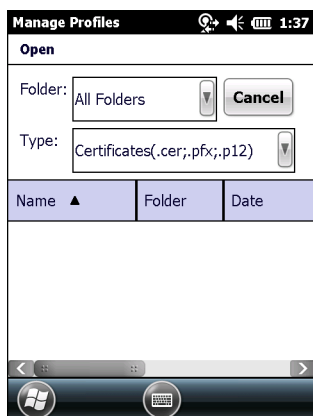


Figure 4-14 *Open Window*

3. Browse to the file and tap **OK**.
4. A confirmation dialog verifies the installation. If the information in this dialog is correct, tap the Yes button, If the information in this dialog is not correct tap the No button. The wizard returns to the **Installed Server Certs** dialog box. Select the newly-installed certificate from the drop down list.

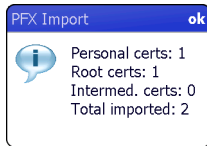


Figure 4-15 Confirmation Dialog Box

User Name

The user name and password can optionally be entered when the profile is created (called a device profile) or they can be left empty (called a user profile). If the username and password are not entered in the profile, then when attempting to connect, the user will be prompted to supply them. The entered information (credentials) will be saved (cached) for future reconnections.

Whether a profile is a device or a user profile affects how the profile is treated during a Profile Roaming operation (see [Profile Roaming on page 3-4](#)). Profiles are excluded from profile roaming consideration if they require user entry of credential information.

If the profile uses an authentication tunnel type of EAP-GTC and Token is selected (see [Encryption on page 4-15](#)), then you can control certain behavior by whether you choose to enter a value in the **Enter User Name** field. If you enter a value in the **Enter User Name** field, then whenever the Fusion software prompts you to enter credentials, the username field in the interactive credential dialog will be initialized with the value that you entered when you created the profile. If you enter a different value in the username field of the interactive credential dialog, it is cached and used to initialize the username field the next time the interactive credential dialog is shown for that profile. If you do not enter a value in the **Enter User Name** field when you create an EAP-GTC token profile, then the username field in the interactive credential dialog is initialized to blank. After you enter a username in the interactive credential dialog, it is cached as usual, but it is not be used to initialize the username field the next time the interactive credential dialog is shown for that profile; the username field will still be initialized to blank. In summary, the user can control whether the username field in the interactive credential dialog box is initialized, either with the last-interactively-entered username for that profile or with the username entered into the profile, by whether any value is entered in the **Enter User Name** field during profile entry.

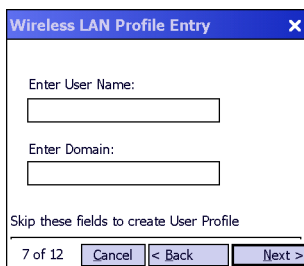


Figure 4-16 Username Dialog Box

Password

Use the **Password** dialog box to enter a password. If EAP-TLS is the selected authentication type, the password dialog box does not display. Note that if a username was entered and no password is entered, Fusion assumes that no password is a valid password.

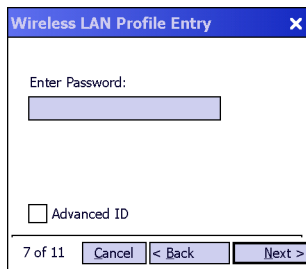


Figure 4-17 Password Dialog Box

1. Enter a password in the **Enter Password** field.

If an authentication tunnel type of EAP-GTC is used, a **Password** dialog box with additional radio buttons displays.

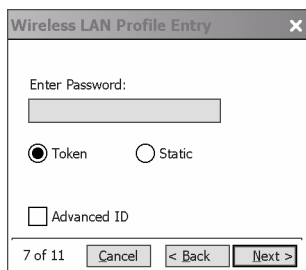


Figure 4-18 EAP-GTC Password Dialog Box

Two radio buttons are added to allow the user to choose a token or static password.

Choose the **Token** radio button when using the profile in conjunction with a token generator (hardware or software). The system administrator should supply the user with a token generator for use with EAP-GTC token profiles. A token generator generates a numeric value that is entered into the password field at connect time, usually along with a PIN. Tokens have a very limited lifetime and usually expire within 60 seconds. The token generator is time-synchronized with a token server. When authenticating, the RADIUS server asks the token server to verify the token entered. The token server knows what value the token generator generates given the time of day and the username. Since tokens expire, EAP-GTC token profiles are treated differently. A prompt appears at the appropriate time to enter a token, even if a token has previously been entered. Tokens are never cached in the credential cache (though the username that is entered when the token is entered is cached).

If the **Static** radio button is selected, the **Enter Password** field is enabled and a password can be entered if desired. A profile that uses an EAP-GTC tunnel type with a static password is handled in the same manner as other profiles that have credentials that don't expire.

1. Select the **Advanced ID** check box, if advanced identification is desired.
2. Tap **Next**. The **Prompt for Login at** dialog box displays. See [Credential Cache Options on page 4-13](#).

Advanced Identity

Use the **Advanced ID** dialog box to enter the 802.1x identity to supply to the authenticator. This value can be 63 characters long and is case sensitive. For TTLS, EAP-FAST, and PEAP authentication types, it is recommended entering the identity *anonymous* (rather than a true identity). You can optionally enter a fully qualified domain (e.g., mydomain.local) and it will automatically be combined with the 802.1x identity (i.e., anonymous@mydomain.local) before being sent to the RADIUS server.

Entering an 802.11x Identity is required before proceeding.

Figure 4-19 *Advanced Identity Dialog Box*

Tap **Next**. The **Encryption** dialog box displays.

Credential Cache Options

When connecting to a password-based user profile for the first time, Fusion will prompt the user to enter credentials. After the credentials have been entered, they are cached. These cached credentials will normally be used, without prompting the user, whenever Fusion reconnects to that profile. The credential caching options allow the administrator to specify additional circumstances under which Fusion will prompt the user to re-enter the credentials even though it already has cached credentials for the given profile. Requiring the user to re-enter credentials can help ensure that only an authorized user is using the device.

The credential caching options are at connection, on each resume, or at a specified time.

Figure 4-20 *Prompt for Login at Dialog Box*



NOTE Credential caching options only apply to user profiles and to user-override profiles (a device profile that a user has logged on to using the Log On/Off command). Credential caching options do not apply to device profiles. You are allowed to set the options for a device profile so that they will have an effect if you convert the profile to a user-override profile by logging on to it using the Log On/Off command.

If the mobile computer does not have the credentials, a username and password must be entered. If the mobile computer has the credentials (previous entered via a login dialog box), it uses these credentials unless the caching options require the mobile computer to prompt for new credentials. If credentials were entered via the profile, the mobile computer does not prompt for new credentials (except for profiles where the credentials expire, such as EAP-GTC token profiles). [Table 4-7](#) lists the caching options.

Table 4-7 Cache Options

Option	Description
At Connect	<p>Select this option to have the mobile computer prompt for credentials each time it tries to connect. Deselect this to use the cached credentials to authenticate. If the credentials are not cached, the user is prompted to enter credentials. This option only applies when the user has previously entered credentials.</p> <p>If the infrastructure has implemented a fast reconnect technology such as Fast Session Resume, or PMKID caching then selecting this option will prevent that technology from working properly by prompting the user for credentials when attempting to reconnect.</p>
On Resume	<p>Select this option to cause an authenticated user to be reauthenticated when a suspend/resume occurs. The mobile computer uses the cached credentials to authenticate. Once authenticated, the user is prompted for credentials. If the user does not enter matching credentials within three attempts, the user is disconnected from the network. This option only applies when the user has previously entered credentials.</p> <p>If the infrastructure has implemented a fast reconnect technology such as Fast Session Resume, or PMKID caching then selecting this option will prevent that technology from working properly by prompting the user for credentials when attempting to reconnect.</p>
At Time	<p>Select this option to perform a local verification on an authenticated user at a specified time. The time can be an absolute time or a relative time from the authentication, and should be in at least five minute intervals. Once the time has passed, the user is prompted for credentials. If the user does not enter the same credentials that were entered prior to the At-Time event within three attempts, the user is disconnected from the network. This option only applies when the user has previously entered credentials.</p>



NOTE Entering credentials applies the credentials to a particular profile. Logging out clears all cached credentials. Editing a profile clears any cached credentials for that profile.

The following authentication types have credential caching:

- EAP-TLS
- PEAP
- LEAP
- TTLS
- EAP-FAST.

Some exceptions to the credential caching rules apply for profiles where the credentials expire, such as EAP-GTC token profiles. Since the token expires after a short period, the user may be prompted for credentials even when credentials have already been entered and cached for that profile.

Selecting the **At Time** check box displays the **Time Cache Options** dialog box.

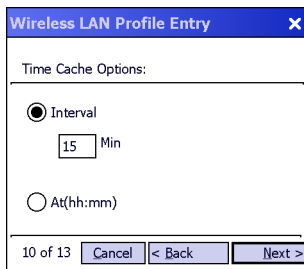


Figure 4-21 Time Cache Options Dialog Box

1. Tap the **Interval** radio button to check credentials at a set time interval.
2. Enter the value in minutes in the **Min** text box.
3. Tap the **At (hh:mm)** radio button to check credentials at a set time.
4. Tap **Next**. The **At Time** dialog box appears.

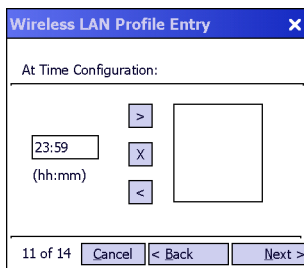


Figure 4-22 At Time Dialog Box

5. Enter the time using the 24 hour clock format in the **(hh:mm)** text box.
6. Tap **>** to move the time to the right. Repeat for additional time periods.
7. Tap **Next**. The **Encryption** dialog box displays.

Encryption

✓ **NOTE** The only available encryption methods in Ad-hoc mode are Open, WEP-40 and WEP-104.

Use the **Encryption** dialog box to select an encryption method. This page contains the fields to configure the encryption method and corresponding keys, if any. The drop-down list only includes encryption methods available for the selected security mode and authentication type.

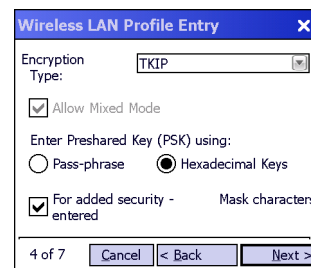
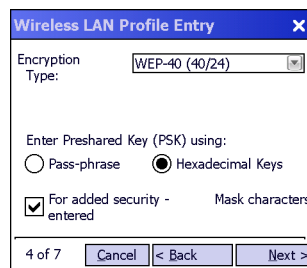
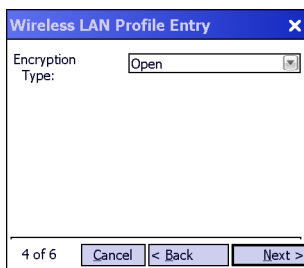


Figure 4-23 Encryption Dialog Box

Based on the encryption method and the authentication type, the user may have to manually enter pre-shared encryption keys (or a pass phrase). When the user selects any authentication type other than None, 802.1x authentication is used and the keys are automatically generated.

Table 4-8 *Encryption Options*

Encryption	Description
Open	Select Open (the default) when no data packet encryption is needed over the network. Selecting this option provides no security for data transmitted over the network.
WEP-40 (40/24)	Select WEP-40 (40/24) to use 64-bit key length WEP encryption. This encryption method is only available for the Legacy security mode with Authentication Type set to None . Note: This is alternately referred to as WEP-64.
WEP-104 (104/24)	Select WEP-104 (104/24) to use a 128-bit key length WEP encryption. If WEP-104 (104/24) is selected, other controls appear that allow you to enter keys. This encryption method is available for the Legacy security mode. Note: This is alternately referred to as WEP-128.
TKIP	Select TKIP for the adapter to use the Temporal Key Integrity Protocol (TKIP) encryption method. This encryption method is available for all security modes other than Legacy. When TKIP is selected, Mixed Mode support is automatically enabled. The Allow Mixed Mode checkbox is enabled and grayed out. This is true for all security modes that allow TKIP as an encryption method. This means that the mobile computer will operate in an environment in which TKIP is used for encrypting the unicast traffic, and either TKIP or WEP-104 is used for encrypting multicast/broadcast traffic. This allows the mobile computer to operate with an AP that is set up to support both WPA and legacy mobile computers simultaneously.
AES	Select AES for the adapter to use the Advanced Encryption Standard (AES) encryption method. This encryption method is available for the WPA2 - Enterprise and WPA2 - Personal security modes. When AES is selected, Mixed Mode support is automatically enabled. The Allow Mixed Mode checkbox is enabled and grayed out. This means that the mobile computer will use only AES encryption for unicast traffic, but allows it to use either AES, TKIP, or WEP-104 encryption for broadcast traffic. This allows the mobile computer to operate with an AP that is set up to support legacy and/or WPA and WPA2 mobile computers simultaneously.

For all Encryption types other than **Open**, if authentication is set to **None**, then the wizard displays additional controls for entering pre-shared keys (see [Figure 4-23 on page 4-15](#)). This includes **Personal** security modes, which default to authentication **None** and exclude **Enterprise** security modes, which require an authentication type to be specified.

- Select the **Pass-phrase** or **Hexadecimal Keys** radio button to indicate whether a pass-phrase or hexadecimal keys will be entered on the next page.
- Select the **For added security - Mask characters entered** check box to hide characters entered. Deselect this to show characters entered.

Table 4-9 Encryption / Authentication Matrix

Authentication	Encryption					
	Legacy (Pre-WPA)		WPA Personal	WPA2 Personal	WPA Enterprise	WPA2 Enterprise
	Open	WEP	TKIP	AES or TKIP	TKIP	AES or TKIP
None	Yes	WEP-40 or WEP-104	Yes	Yes		
EAP-TLS		WEP-104			Yes	Yes
EAP-FAST		WEP-104			Yes	Yes
PEAP		WEP-104			Yes	Yes
LEAP		WEP-104			Yes	Yes
TTLS		WEP-104			Yes	Yes

Hexadecimal Keys

To enter the hexadecimal key information select the **Hexadecimal Keys** radio button. An option is provided to hide the characters that are entered for added security. To hide the characters select the **For added security - Mask characters entered** check box.

To enter a hexadecimal key with characters hidden:

1. Select the **For added security - Mask characters entered** check box.
2. Tap **Next**.

Figure 4-24 WEP-40 and WEP-104 WEP Keys Dialog Boxes

3. For WEP only, in the **Edit Key** drop-down list, select the key to enter.
4. In the **Key** field, enter the key.
 - a. For WEP-40 enter 10 hexadecimal characters.
 - b. For WEP-104 enter 26 hexadecimal characters.
 - c. For TKIP enter 64 hexadecimal characters.
 - d. For AES enter 64 hexadecimal characters.
 - e. For SMS4 enter 32 hexadecimal characters.
5. In the **Confirm** field, re-enter the key. When the keys match, a message appears indicating that the keys match.

6. Repeat for each WEP key.
7. For WEP only, in the **Transmit Key** drop-down list, select the key to transmit.
8. Tap **Next**. The **IPv4 Address Entry** dialog box displays.

To enter a hexadecimal key without characters hidden:

1. Tap **Next**.

Figure 4-25 WEP-40 and WEP-104 WEP Keys Dialog Boxes

2. For WEP only, in each **Key** field, enter the key.
 - a. For WEP-40 enter 10 hexadecimal characters.
 - b. For WEP-104 enter 26 hexadecimal characters.
 - c. For TKIP enter 64 hexadecimal characters.
 - d. For AES enter 64 hexadecimal characters.
 - e. For SMS4 enter between 8 and 63 characters.
3. For WEP only, in the **Transmit Key** drop-down list, select the key to transmit.
4. Tap **Next**. The **IPv4 Address Entry** dialog box displays.

Pass-phrase Dialog

When selecting **None** as an authentication and **WEP** as an encryption, choose to enter a pass-phrase by checking the **Pass-phrase** radio button. The user is prompted to enter the pass-phrase. For WEP, the **Pass-phrase** radio button is only available if the authentication is **None**.

When selecting **None** as an authentication and **TKIP** as an encryption, the user must enter a pass-phrase. The user cannot enter a pass-phrase if the encryption is **TKIP** and the authentication is anything other than **None**.

When selecting **None** as an authentication and **AES** as an encryption, the user must enter a pass-phrase. The user cannot enter a pass-phrase if the encryption is **AES** and the authentication is anything other than **None**.

To enter a pass-phrase with characters hidden:

1. Select the **For added security - Mask characters entered** check box.
2. Tap **Next**.

Figure 4-26 WEP-40 and WEP-104 WEP Keys Dialog Boxes

3. In the **Key** field, enter the key.
 - a. For WEP-40 enter between 4 and 32 characters.
 - b. For WEP-104 enter between 4 and 32 characters.
 - c. For TKIP enter between 8 and 63 characters.
 - d. For AES enter between 8 and 63 characters.
4. In the **Confirm** field, re-enter the key. When the keys match, a message appears indicating that the keys match.
5. Tap **Next**. The **IPv4 Address Entry** dialog box displays.

To enter a pass-phrase key without characters hidden:

1. Tap **Next**.

Figure 4-27 WEP-40 and WEP-104 WEP Keys Dialog Boxes

2. In the **Key** field, enter the key.
 - a. For WEP-40 enter between 4 and 32 characters.
 - b. For WEP-104 enter between 4 and 32 characters.
 - c. For TKIP enter between 8 and 63 characters.
 - d. For AES enter between 8 and 63 characters.

Tap **Next**. The **IPv4 Address Entry** dialog box displays.

IPv4 Address Entry

Use the **IPv4 Address Entry** dialog box to configure network address parameters: IP address, subnet mask, gateway, DNS, and WINS.

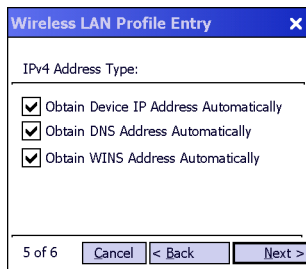


Figure 4-28 IPv4 Address Entry Dialog Box

Table 4-10 IPv4 Address Entry

Field	Description
Obtain Device IP Address Automatically	Check to obtain a leased IP address and network configuration information from a remote server. This setting is checked by default in the mobile computer profile. Uncheck to manually assign IP, subnet mask and default gateway addresses the mobile computer profile uses. Ad-hoc mode does not support DHCP. Use only Static IP address assignment.
Obtain DNS Address Automatically	Check to use DNS server addresses obtained from a remote server. This setting is checked by default in the mobile computer profile. Uncheck to manually assign DNS server addresses. Ad-hoc mode does not support DHCP. Use only Static IP address assignment.
Obtain WINS Address Automatically	Check to use WINS server addresses obtained from a remote server. This setting is checked by default in the mobile computer profile. Uncheck to manually assign WINS server addresses. Ad-hoc mode does not support DHCP. Use only Static IP address assignment.

Select all three check boxes to automatically obtain addresses from a remote server. Tap **Next**. The **Transmit Power** dialog box displays.

Uncheck the **Obtain Device IP Address Automatically** to manually assign IP, subnet mask and default gateway addresses the mobile computer profile uses. Tap **Next**. The **Static IP Address** dialog box appears.

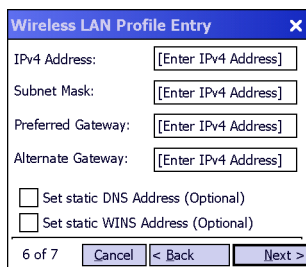
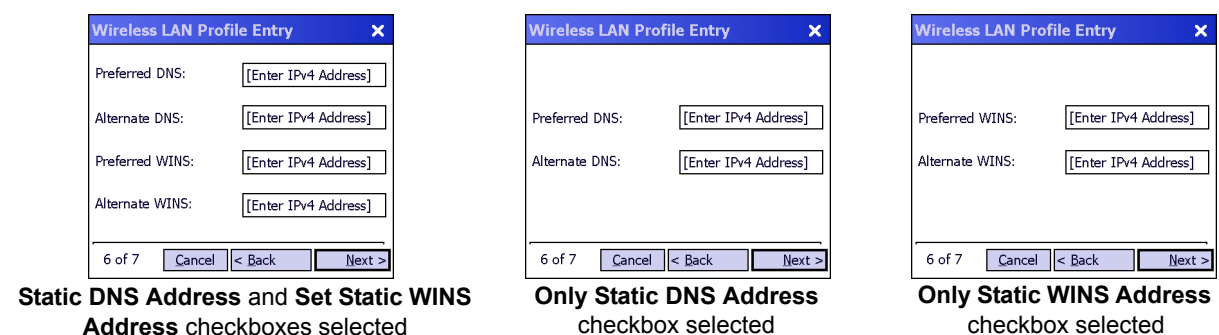


Figure 4-29 Static IP Address Entry Dialog Box

Table 4-11 Static IP Address Entry Fields

Field	Description
IPv4 Address	The Internet is a collection of networks with users that communicate with each other. Each communication carries the address of the source and destination networks and the particular machine within the network associated with the user or host computer at each end. This address is called the IP address (Internet Protocol address). Each node on the IP network must be assigned a unique IP address that is made up of a network identifier and a host identifier. Enter the IP address as a dotted-decimal notation with the decimal value of each octet separated by a period, for example, 192.168.7.27.
Subnet Mask	Most TCP/IP networks use subnets to manage routed IP addresses. All IP addresses have a network part and a host part. The network part specifies a physical network. The host part specifies a host on that physical network. The subnet mask allows a network administrator to use some of the bits that are normally used to specify the host to instead specify physical sub-networks within an organization. This helps organize and simplify routing between physical networks.
Gateway	The default gateway forwards IP packets to and from a remote destination.
Set Static DNS Address (Optional)	Check to manually assign DNS server addresses.
Set Static WINS Address (Optional)	Check to manually assign WINS server addresses.

Select the **Set Static DNS Address** or **Set static WINS address** check box, then tap **Next** to display the **DNS/WINS Address Entry** dialog box. Enter the DNS and/or WINS addresses here. Tap **Next** without selecting the **Set Static DNS Address** or **Set static WINS Address** check box to display the **Transmit Power** dialog box.

**Figure 4-30** DNS/WINS Address Entry Dialog Box

The IP information entered in the profile is only used if the **Enable IPv4 Mgmt** check box in the **Options > System Options** dialog box was selected ([System Options on page 7-5](#)). If not selected, the IP information in the profile is ignored and the IP information entered in the Microsoft interface applies.

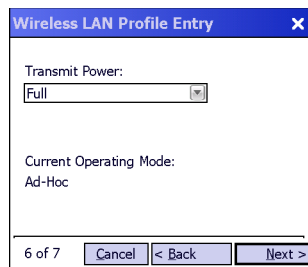
Table 4-12 DNS/WINS Address Entry Fields

Field	Description
DNS	<p>The Domain Name System (DNS) is a distributed Internet directory service. DNS translates domain names and IP addresses, and controls Internet email delivery. Most Internet services require DNS to operate properly. If DNS is not configured, Web sites cannot be located and/or email delivery fails.</p> <p>The Alternate DNS server address will be used if the Preferred DNS server is unavailable.</p>
WINS	<p>WINS is a Microsoft® Net BIOS name server. WINS eliminates the broadcasts needed to resolve computer names to IP addresses by providing a cache or database of translations.</p> <p>The Alternate WINS server address will be used if the Preferred WINS server is unavailable.</p>

Tap **Next**. The **Transmit Power** dialog box displays.

Transmit Power

The **Transmit Power** drop-down list contains different options for Ad-hoc.

**Figure 4-31** Transmit Power Dialog Box (Ad-hoc Mode)**Table 4-13** Power Transmit Options (Ad-hoc Mode)

Field	Description
Full	Select Full power for the highest transmission power level. Select Full power when operating in highly reflective environments and areas where other devices could be operating nearby, or when attempting to communicate with devices at the outer edge of a coverage area.
30 mW	Select 30 mW to set the maximum transmit power level to 30 mW. The radio transmits at the minimum power required.
15 mW	Select 15 mW to set the maximum transmit power level to 15 mW. The radio transmits at the minimum power required.
5 mW	Select 5 mW to set the maximum transmit power level to 5 mW. The radio transmits at the minimum power required.
1 mW	Select 1 mW to set the maximum transmit power level to 1 mW. The radio transmits at the minimum power required.

Tap **Next** to display the **Battery Usage** dialog box.

Battery Usage

Use the **Battery Usage** dialog box to select power consumption of the wireless LAN. There are three settings available: CAM, Fast Power Save, and MAX Power Save. Battery usage cannot be configured in Ad-hoc profiles and options are disabled (grayed-out).

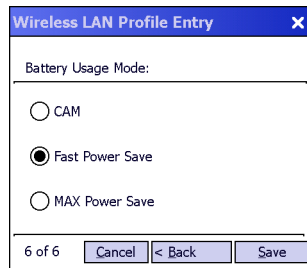


Figure 4-32 Battery Usage Dialog Box

✓ **NOTE** Power consumption is also related to the transmit power settings.

Table 4-14 Battery Usage Options

Field	Description
CAM	Continuous Aware Mode (CAM) provides the best network performance, but yields the shortest battery life.
Fast Power Save	Fast Power Save (the default) yields much better battery life than CAM, but with some degradation in network performance.
MAX Power Save	Max Power Save yields the longest battery life, but with potentially more degradation in network performance. However, in networks with minimal latency, MAX Power Save can yield the same network performance as Fast Power Save .

When the AP that the mobile computer associates to is configured to use WMM Power Save mode, the mobile computer will ignore the Battery Usage Mode setting – assuming it's not set to CAM – and will use the WMM protocol instead. While the use of WMM Power Save mode can maximize battery life, it can also decrease network performance.

✓ **NOTE** WMM Power Save mode will override Fast Power Save and MAX Power Save mode and cannot be disabled.

Performance Settings

Use the **Performance Settings** dialog box to tune a profile to maximize data throughput or optimal voice quality. There are two settings available: Optimize for Data and Optimize for Voice.

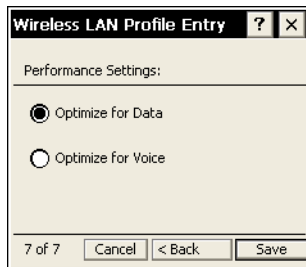


Figure 4-33 Performance Settings Dialog Box

Table 4-15 Performance Settings Options

Field	Description
Optimize for Data	Roam and power save parameters are tuned to maximize data throughput.
Optimize for Voice	Roam and power save parameters are tuned to maximize voice quality.

CHAPTER 5 MANAGE CERTIFICATES APPLICATION

Introduction

Users can view and manage security certificates in the various certificate stores. Tap the **Signal Strength** icon > **Manage Certs**. The **Certificate Manager** window displays.

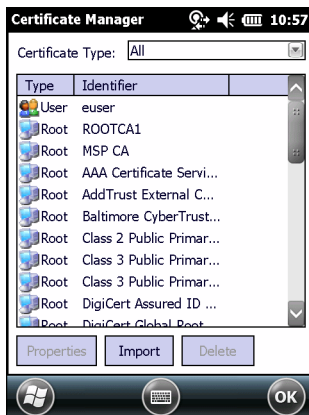


Figure 5-1 *Certificate Manager Window*

Various certificate types display at one time. Select the **Certificate Type** drop-down box to filter the certificate list to display **All**, only **Root/Server**, or only **User/Client** certificates.

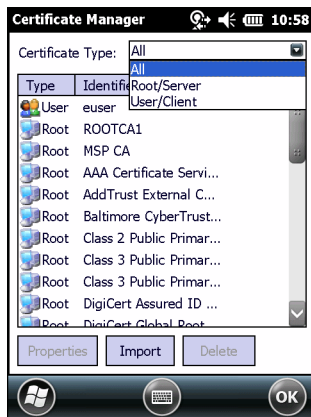


Figure 5-2 Certificate Type Options

The **Certificate Manager** window contains command buttons at the bottom of the window. A button might be disabled (gray) if the operation cannot be performed based on any selected object.

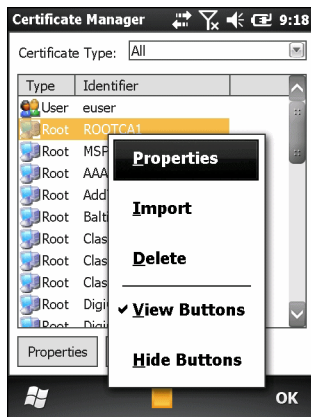


Figure 5-3 Command Buttons and Context Menu

These buttons can be hidden to allow more space for displaying the list of certificates. To hide the buttons tap-and-hold and/or double-tap the stylus in the list area depending on the mobile computer. It can also be brought up by pressing the Enter key on the keyboard. The pop-up menu appears.

Select **Hide Buttons** to hide the command buttons.

To display the buttons select **View Buttons** from the pop-up menu.

The pop-up menu also allows the user to select the **Properties**, **Import**, and **Delete** commands.

Certificate Properties

To display the detailed properties of a certificate, select a certificate in the list and tap the **Properties** button. The window display the properties of the certificate. Select a property in the upper list and the detailed information displays in the **Expanded Value** section.

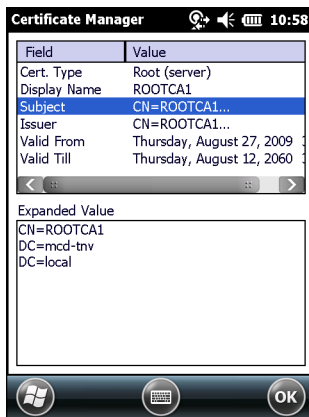


Figure 5-4 Certificate Properties Window

Tap **ok**, **Escape**, or **X** button to exit (depending on the mobile computer).

Import a Certificate

Import certificates from either files or from a server machine:

- .CER file - DER encrypted Root/Server certificates.\

✓ **NOTE** In order to validate a server certificate for an Intermediate CA during authentication, it is only necessary to import the certificate from the associated Root CA and then specify the Root CA in the profile.

- .PFX file - Personal inFormation eXchange formatted file containing one or more Root/Server and/or User/Client Certificates. These files are usually protected by a password, so a password will be prompted for. If there is no password, enter nothing and select the **OK** button.
- Server - User/Client certificates can be requested directly from a Certificate Authority (CA) on the network. A User name, Password (optional), and the Server (an IP address) must be provided to obtain a certificate for the User from the CA.

✓ **NOTE** It is possible to import and successfully use a user certificate issued by an Intermediate CA; however, this may require additional infrastructure setup. For example, it may be necessary to supply the RADIUS server with certificates for both the Intermediate CA and for the Root CA. Infrastructure setup is beyond the scope of this guide.

Tap the **Import** button or select from the context menu. The **Import Certificate** dialog box displays.

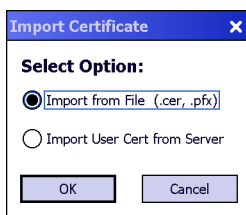


Figure 5-5 Import Certificate Dialog Box

Select the **Import from File (.cer, .pfx)** radio button to import a certificate file. The **Open** window displays.

Select the file to import.

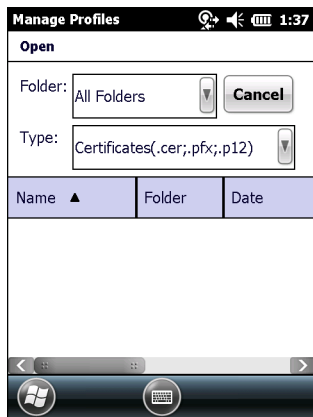


Figure 5-6 Certificate Manage Window - Import from File

Select the **Import User Cert from Server** radio button to import a certificate from a server. The **Install From Server** window displays.

Enter the user, password, and server information in the respective text boxes.

Tap the **Retrieve** button to import the certificate.

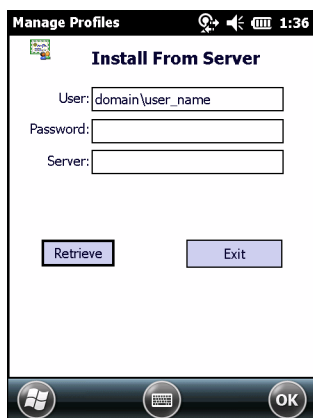


Figure 5-7 Install From Server

Delete a Certificate

To delete a certificates:

Select the certificate to delete.

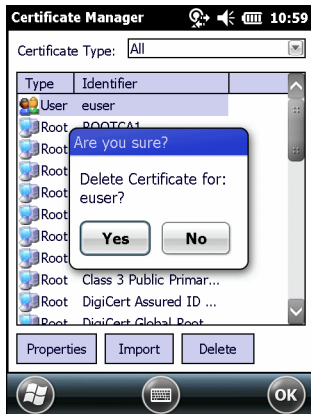


Figure 5-8 Certificate Dialog Box - Delete Certificate

Tap the **Delete** button or select **Delete** from the pop-up menu.

CHAPTER 6 MANAGE PACS APPLICATION

Introduction

Users can view and manage Protected Access Credentials (PACs) used by Cisco's EAP-FAST authentication protocol. Tap the **Signal Strength** icon > **Manage PACs**. The **PAC Manager** window displays.

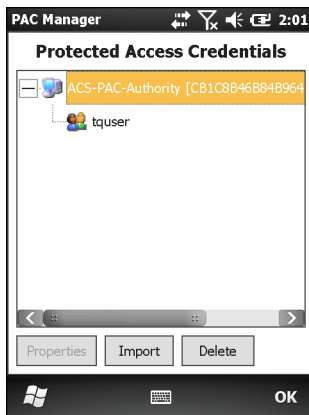


Figure 6-1 PAC Manager Window

PACs are uniquely identified by referencing a PAC Authority Identifier (A-ID) (the server that issued the PAC) and by the individual user identifier (I-ID). The PACs display sorted by A-ID (default) or by I-ID in a tree display.

The **PAC Manager** window contains buttons at the bottom of the window. A button might be disabled (gray) if the operation cannot be performed based on any selected object.

These buttons can be hidden to allow more space for displaying the list of certificates. To hide the buttons tap-and-hold and/or double-tap the stylus in the list area depending on the mobile computer.

Select **Hide Buttons** to hide the buttons.

To display the buttons select **View Buttons** from the pop-up menu.

The pop-up menu also allows the user to select the **Properties**, **Import** and **Delete** commands.

You can always sort by A-ID, sort by I-ID, view buttons and hide buttons in the pop-up menu.



Figure 6-2 Command Buttons and Context Menu

PAC Properties

Display the detailed properties of a PAC by selecting an item in a sub-tree, and selecting the **Properties** button or pop-up menu. The following Window appears with the list of properties in the upper portion of the window. By selecting an entry in the upper list, the expanded details of the entry property display in the lower list of the window.

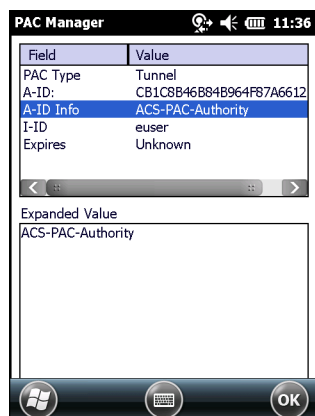


Figure 6-3 PAC Properties Pop-up

To return to the main page, tap the **Ok** button, **Escape**, or **X** button depending on the mobile computer.

Delete PAC

To delete a single PAC, tap a leaf item (right most tree item) to select the PAC, then select the **Delete** button or pop-up menu. A confirmation dialog box appears.

To delete a group of PACs having the same A-ID or same I-ID, sort the PACs by desired ID type, then tap on the parent item (left most tree item) to select the group. Select the **Delete** button or pop-up menu and a confirmation dialog box appears.

Import PAC

Usually PACs are automatically provisioned to the mobile computer over the air the first time EAP-FAST authentication occurs. For increased security, an administrator may choose to manually provision the mobile computer with a PAC instead. In this case, the administrator must generate an appropriate PAC file manually using commands on the PAC Authority. Once the PAC file is generated, it must be manually transferred to the mobile computer's file system before it can be imported by the Manage PACs application.

To import a PAC, tap the **Import** button. A dialog displays asking you to select the PAC file to be imported.

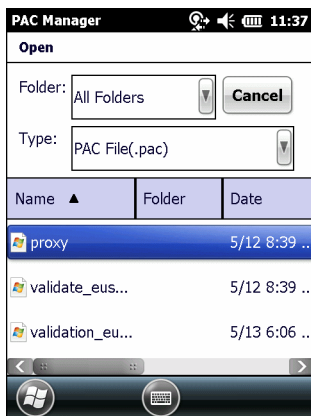


Figure 6-4 Open Window

Navigate to the file to be imported and choose it. The **Import PAC** dialog displays.

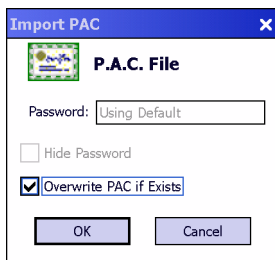


Figure 6-5 Import PAC Dialog Box

If the PAC file is password protected, enter the password in the **Password** field. If you uncheck the **Hide Password** checkbox, the password will be displayed in clear text as you type it. To hide the password as you type it, leave the **Hide Password** checkbox checked. If you wish to overwrite any existing PAC in the Fusion PAC Store without being prompted for verification, check the **Overwrite PAC if Exists** checkbox. Tap the **Ok** button to import the PAC. Tap the **Cancel** button to abort the import operation.

If you have tapped **Ok** and the PAC already exists in the PAC Store, a verification dialog box may appear. Tap **Yes** to continue the import operation or tap **No** to abort the operation. If you have tapped **Yes**, an informational dialog box appears listing the attributes (A-ID and I-ID) of the imported PAC.

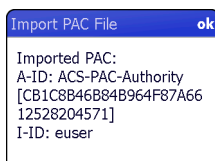


Figure 6-6 Import PAC File Dialog Box

Tap **ok** to close the dialog box. You will be returned to the main **PAC Manager** window with the tree list of PACs. The newly-imported PAC should appear in the list.

CHAPTER 7 OPTIONS

Introduction

Use the wireless **Option** dialog box to select one of the following operation options from the drop-down list.

- Op Mode Filtering
- Regulatory
- Band Selection
- 802.11 Options
- System Options
- Auto PAC Settings
- IPv6
- Change Password
- Import/Export
- Data Management.

Change the option settings as you desire and then tap **SAVE** to save your changes. Until you tap the **SAVE** button, no changes are saved. To close the dialog, tap **ok**. If you tap **ok** and you have made changes without saving them, a dialog will display asking if you want to quit without saving.

Op (Operating) Mode Filtering

The **Op Mode Filtering** options cause the **Find WLANs** application to filter the available networks found.

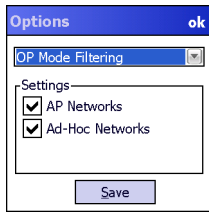


Figure 7-1 OP Mode Filtering Dialog Box

The **AP Networks** and **Ad-Hoc Networks** check boxes are selected by default.

Table 7-1 OP Mode Filtering Options

Field	Description
AP Networks	Select the AP Networks check box to display available AP networks and their signal strength within the Available WLAN Networks (see Chapter 2, Find WLAN Application). These are the APs in the vicinity available to the mobile computer for association. If this option was previously disabled, refresh the Available WLAN Networks window to display the AP networks available to the mobile computer. Default: Enabled.
AD-Hoc Networks	Select the Ad-Hoc Networks check box to display available peer (adapter) networks and their signal strength within the Available WLAN Networks . These are peer networks in the vicinity that are available to the mobile computer for association. If this option was previously disabled, refresh the Available WLAN Networks window to display the Ad Hoc networks available to the mobile computer. Default: Enabled

Regulatory

Use the **Regulatory** settings to configure the 802.11d mode for the mobile computer. Due to regulatory requirements (within a country) a mobile computer is only allowed to use certain channels.

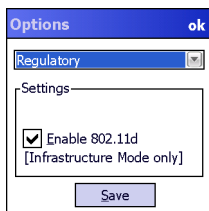


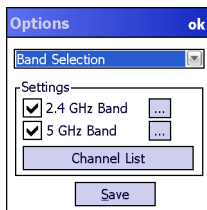
Figure 7-2 Regulatory Dialog Box

Table 7-2 Regulatory Options

Field	Description
Settings	Select a country from the drop-down list. If the Enable 802.11d check box is not selected, a profile's country selection must match this setting in order to connect to that profile.
Enable 802.11d	<p>If the Enable 802.11d check box is selected, the WLAN adapter follows the 802.11d standard. It passively scans until valid country information is received from an AP. It limits transmit power settings based on maximums received from the AP.</p> <p>If the Enable 802.11d check box is not selected, the WLAN adapter uses the channel and power limit settings programmed in the device.</p> <p>Profiles which use Ad-hoc mode are not 802.11d compliant.</p>

Band/Channel Selection

The **Band Selection** settings identify the frequency bands to scan when searching for WLANs.

**Figure 7-3** Options - Band Selection Dialog Box**Table 7-3** Band Selection Options

Field	Description
2.4GHz Band	The Find WLANs application list includes all networks found in the 2.4 GHz band (802.11b and 802.11g).
5GHz Band	The Find WLANs application list includes all networks found in the 5 GHz band (802.11a).

✓ **NOTE** When both bands are enabled, the device gives scan priority to the band it is currently connected to. Channel Mask overrides this inter-band priority and enforces the configured list of channels.

Final list of channels that the device scans is decided by an intersection of **Band Selection**, **Channel Mask** and **Regulatory** settings. **Band Selection** is a top level filter, i.e., no channels from a disabled band are used for any purpose. **Channel Mask** and **Regulatory** constraints further prune the channel list. If the resulting channel set is a null set then no scanning or connection may occur.

✓ **NOTE** Not all devices support both 2.4 GHz and 5 GHz bands.

Use the **Channel List** button to view enabled channels for each band. Note that channel configuration for each band is remembered even if a band is deselected (these channels are effectively inactive as the band itself is deselected).

To edit default channel settings or to edit previously saved channel list, tap the button next to the band to edit. A list of channels displays.

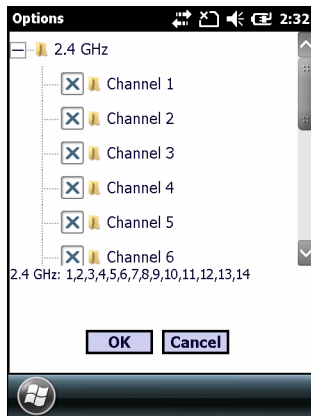


Figure 7-4 Channel Selection Dialog Box

Each channel with a check box is included in the enabled channel list.

802.11 Options



NOTE 802.11 Option is available only when **Fusion Manages WLAN** is enabled.

Use the **802.11 Option** to enable or disable Pre-Authentication for WLAN. When Pre-Authentication feature is enabled on the mobile computer as well as the on the infrastructure, the mobile computer uses its current AP connection to “authenticate ahead” with other APs as detected by channel scan. This forward authentication reduces roam time as the mobile computer roams to these pre-authenticated APs.

802.11 Pre-Authentication complements PMKID and Opportunistic key Caching (OKC) mechanisms supported by Fusion.

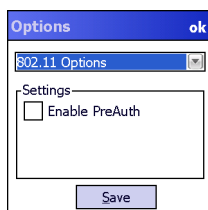


Figure 7-5 802.11 Options Dialog Box

Table 7-4 802.11 Options

Option	Description
Enable Pre-Authentication	Select the Enable Pre-Authentication check box to enable Pre-Authentication for WLAN. Pre-authentication option is disabled by default.

System Options

Use **System Options** to set miscellaneous system setting.

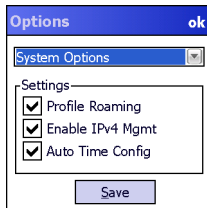


Figure 7-6 System Options Dialog Box

Table 7-5 System Options

Field	Description
Profile Roaming	Configures the mobile computer to roam to the next available WLAN profile when it moves out of range of the current WLAN profile. Default: Enabled
Enable IPv4 Mgmt	Enables the Wireless Companion Services to handle IPv4 address management. The Wireless Companion Service configures the IP based on what is configured in the network profile. Deselect this to manually configure the IP in the standard Windows IP window. Default: Enabled
Auto Time Config	Synchronizes device system time to the WLAN network time during association. This feature is only supported with Zebra infrastructure.

Auto PAC Settings

✓ **NOTE** Auto PAC Settings option is available only when **Fusion Manages WLAN** is enabled.

Use the **Auto PAC Settings** to configure whether to allow automatic PAC provisioning and automatic PAC refreshing when using the EAP-FAST authentication protocol.

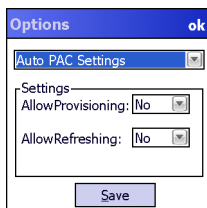


Figure 7-7 Auto PAC Settings Dialog Box

Table 7-6 Auto PAC Settings

Field	Description
AllowProvisioning	Select Yes from the drop down list to allow the mobile computer to be automatically provisioned with a PAC when using the EAP-FAST authentication protocol. Select No to disallow automatic PAC provisioning. Default: No
AllowRefreshing	Select Yes from the drop down list to allow an existing PAC on the mobile computer to be automatically refreshed when using the EAP-FAST authentication protocol. Select No to disallow automatic PAC refreshing. Default: No

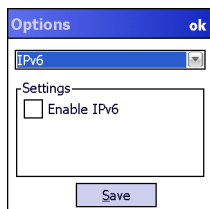
If the master key on the PAC Authority has expired then the PAC on the mobile computer that was generated with this expired key will have to be manually deleted and a new PAC provisioned even when **AllowRefreshing** is set to **Yes**.

IPv6



NOTE IPv6 option is available only when **Fusion Manages WLAN** is enabled. When **Windows Manages WLAN** is enabled, IPv6 is always enabled.

Use the **IPv6** options to enable or disable IPv6 for WLAN.

**Figure 7-8** IPv6 Options Dialog Box**Table 7-7** IPv6 Options

Field	Description
Enable IPv6	Select the Enable IPv6 check box to enable IPv6 for WLAN. Default: Disabled

Change Password

Use **Change Password** to require that a user enter a password before being allowed to access certain Fusion functions. The functions that are password protected include:

- Find WLANs
- Manage Profiles
- Manage Certs
- Manage PACs

- Options.

Having a password prohibits an un-trusted user from, for example, creating or editing a profile or changing the **Options**. This allows pre-configuring profiles and prevents users from changing the network settings. The user can use this feature to protect settings from a guest user. By default, the password is not set.

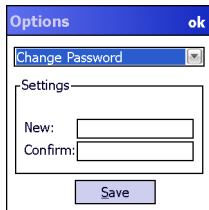


Figure 7-9 Change Password Window

Enter the current password in the **Current** text box. If there is no current password, the **Current** text box is not displayed. Enter the new password in the **New** and **Confirm** text boxes. Tap **Save**.

To change an existing password, enter the current password in the **Current** text box and enter the new password in the **New:** and **Confirm:** text boxes. Tap **Save**.

To delete the password, enter the current password in the **Current:** text box and leave the **New:** and **Confirm:** text boxes empty. Tap **Save**.

✓ **NOTE** Passwords are case sensitive and can not exceed 63 characters.

Import/Export

✓ **NOTE** For Windows CE devices, exporting options enables settings to persist after cold boot. For Windows Mobile devices, exporting options enables settings to persist after clean boot. See [Chapter 11, Configuration Persistence](#) for more information.

Use the **Import/Export** options to export Fusion configuration database to a file and to import previously exported data back to the Fusion configuration database.

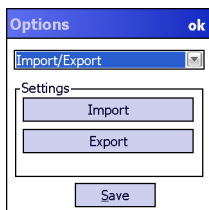


Figure 7-10 Options - Import/Export Dialog Box

Table 7-8 Import/Export Options

Option	Description
Import	Allows import of configuration data exported previously to a file.
Export	Allows export of Options, Profiles, PACs and Certificates from Fusion configuration database to a file. Allows securing the file with an optional password.

Data Management

Use the **Data Management** option reset Fusion configuration to factory default state.

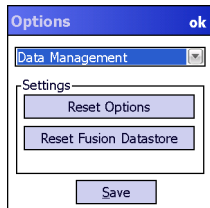


Figure 7-11 Options - Data Management Dialog Box

Table 7-9 Data Management Options

Option	Description
Reset Options	Restores default values for all Fusion option settings.
Reset Fusion Data Store	Restores default values for all configuration data, including profiles, certificates, and PACs. Fusion options are also set to default values.

CHAPTER 8 WIRELESS STATUS APPLICATION

Introduction

To open the **Wireless Status** window, tap the **Signal Strength** icon > **Wireless Status**. The **Wireless Status** window displays information about the wireless connection.

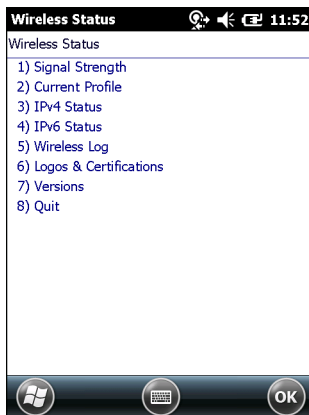


Figure 8-1 *Wireless Status Window*

The **Wireless Status** window contains the following options. Tap the option to display the option window.

- **Signal Strength** - provides information about the connection status of the current wireless profile.
- **Current Profile** - displays basic information about the current profile and connection settings.
- **IPv4 Status** - displays the current IP address, subnet, and other IP related information assigned to the mobile computer.
- **IPv6 Status** – displays IPv6 status and IPv6 related information assigned to the WLAN interface of the mobile computer.
- **Wireless Log** - displays a log of important recent activity, such as authentication, association, and DHCP renewal completion, in time order.
- **Logos & Certification** – Displays logos and certificates
- **Versions** - displays software, firmware, and hardware version numbers.

- Quit - exits the **Wireless Status** window.

Each option window contains a back button  to return to the main **Wireless Status** window.

Signal Strength Window

The **Signal Strength** window provides information about the connection status of the current wireless profile including signal quality, missed beacons, and other statistics described below. The BSSID address (shown as *AP MAC Address*) displays the AP currently associated with the connection. In Ad-hoc mode, the AP MAC Address shows the BSSID of the Ad-hoc network. Information in this window updates every 2 seconds.

To open the **Signal Status** window, tap **Signal Strength** in the **Wireless Status** window.

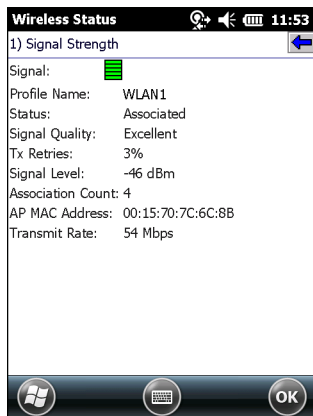


Figure 8-2 *Signal Strength Window*

After viewing the **Signal Strength** window, tap the back button to return to the **Wireless Status** window.

Table 8-1 *Signal Strength Status*

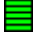






Field	Description
Signal	Displays the Relative Signal Strength Indicator (RSSI) of the signal transmitted between the AP and mobile computer. As long as the Signal Quality icon is green, the AP association is not jeopardized. If the icon is red (poor signal), an association with a different AP could be warranted to improve the signal. The signal strength icon changes depending on the signal strength.
	 Excellent Signal
	 Very Good Signal
	 Good Signal
	 Fair Signal
	 Poor Signal
	 Out of Range (no signal)
	 The radio card is off or there is a problem communicating with the radio card.
Profile Name	Displays the name of the current profile.
Status	Indicates if the mobile computer is associated with the AP.

Table 8-1 *Signal Strength Status (Continued)*

Field	Description
Signal Quality	Displays a text format of the Signal icon.
Tx Retries	Displays a percentage of the number of data packets the mobile computer retransmits. The fewer transmit retries, the more efficient the wireless network is.
Signal Level	The AP signal level in decibels per milliwatt (dBm).
Association Count	Displays the number of times the mobile computer has roamed from one AP to another.
AP MAC Address	Displays the MAC address of the AP to which the mobile computer is connected.
Transmit Rate	Displays the current rate of the data transmission.

Current Profile Window

The **Current Profile** window displays basic information about the current profile and connection settings. This window updates every two seconds.

To open the **Current Profile** window, tap **Current Profile** in the **Wireless Status** window.

**Figure 8-3** *Current Profile Window***Table 8-2** *Current Profile Window*

Field	Description
Profile Name	Displays the name of the profile that the mobile computer is currently using to communicate with the AP.
ESSID	Displays the current profile's ESSID.
Mode	Displays the current profile's mode, either Infrastructure or Ad-hoc. See Table 4-2 on page 4-2 .
Security Mode	Displays the current profile's security mode. See Table 4-4 on page 4-4 .
Authentication	Displays the current profile's authentication type. See Table 4-5 on page 4-5 .

Table 8-2 *Current Profile Window (Continued)*

Field	Description
Encryption	Displays the current profile's encryption type. See Table 4-8 on page 4-16 .
Channel	Displays the channel currently being used to communicate with the AP.
Country	Displays the country setting currently being used.

IPv4 Status Window

The **IPv4 Status** window displays the current IP address, subnet, and other IP related information assigned to the mobile computer. It also allows renewing the IP address if the profile is using DHCP to obtain the IP information. Tap **Renew** to initiate the IP address renewal process. Tap **Export** to export IPv4 status information to a text file. The **IPv4 Status** window updates automatically when the IP address changes.

To open the **IPv4 Status** window, tap **IPv4 Status** in the **Wireless Status** window.

**Figure 8-4** *IPv4 Status Window***Table 8-3** *IPv4 Status Fields*

Field	Description
IP Type	Displays the IP address assignment method used for the current profile: DHCP or Static . If the IP Type is DHCP, the IP Address and other information shown is obtained from the DHCP server. In this case, the DHCP Server address and the Lease information will also be shown. If the IP Type is Static, the IP Address and other information shown are those that were entered in the profile.
IP Address	Displays the mobile computer's IP address. The Internet is a collection of networks with users that communicate with each other. Each communication carries the address of the source and destination networks and the particular machine within the network associated with the user or host computer at each end. This address is called the IP address. Each node on the IP network must be assigned a unique IP address that is made up of a network identifier and a host identifier. The IP address is shown in dotted-decimal notation with the decimal value of each octet separated by a period, for example, 192.168.7.27.

Table 8-3 *IPv4 Status Fields (Continued)*

Field	Description
Subnet	Displays the mobile computer's subnet mask. Most TCP/IP networks use subnets to manage routed IP addresses. All IP addresses have a network part and a host part. The network part specifies a physical network. The host part specifies a host on that physical network. The subnet mask allows a network administrator to use some of the bits that are normally used to specify the host to instead specify physical sub-networks within an organization. This helps organize and simplify routing between physical networks.
Gateway	Displays the IP addresses of the gateways. A gateway forwards IP packets to and from a remote destination.
DCHP Server	Displays the IP address of the DHCP server.
Lease Obtained	Displays the date and time that the IP address was obtained.
Lease Expires	Displays the date and time that the IP address expires.
DNS	Displays the IP addresses of the DNS server.
WINS	Displays the IP addresses of the WINS servers. WINS is a Microsoft Net BIOS name service. A WINS server provides a cache or database of NetBIOS name translations, eliminating the need to broadcast NetBIOS requests to resolve these names to IP addresses.
MAC	The IEEE 48-bit address is assigned to the network adapter at the factory to uniquely identify the adapter at the physical layer.
Host Name	Displays the name of the mobile computer.

IPv6 Status Window

The **IPv6 Status** window displays IPv6 status, current IPv6 addresses and other IPv6 related information assigned to the WLAN interface. It also allows resetting the IPv6 address. The **IPv6 Status** window updates automatically when the IPv6 address changes.

Tap **Reset** to initiate IPv6 reset. Reset forces the TCP/IPv6 stack to re-bind to the WLAN interface. During re-bind, IPv6 stack discards its current IPv6 configuration and starts a fresh address auto configuration.

Tap **Export** to export IPv6 status information to a text file.

To open the **IPv6 Status** window, tap **IPv6 Status** in the **Wireless Status** window.

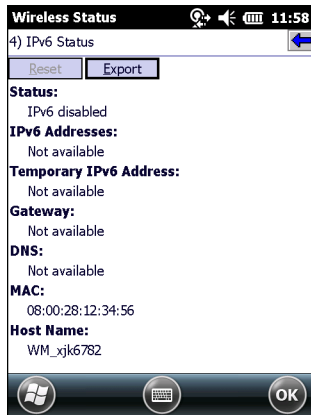


Figure 8-5 IPv6 Status Window

Table 8-4 IPv6 Status Fields

Field	Description
Status	Indicates whether IPv6 is enabled or disabled for the WLAN interface. You can enable or disable IPv6 from Options > Enable IPv6 , see IPv6 on page 7-6 .
IPv6 Addresses	Displays the mobile computer's IPv6 addresses assigned to WLAN interface. Displays all IPv6 addresses except Temporary IPv6 address. For each IPv6 address, it shows the scope (link local/site local/global/unknown) and remaining valid lifetime of the address.
Temporary IPv6 Address	Displays the mobile computer's Temporary IPv6 address assigned to WLAN interface. It displays the scope and remaining valid lifetime of the address. Temporary IPv6 addresses are based on random interface identifiers and are generated for public address prefixes that use stateless address auto configuration.
Gateway	Displays the IPv6 address of the gateway. A gateway forwards IP packets to and from a remote destination.
DNS	Displays the IPv6 address of the DNS server.
MAC	The IEEE 48-bit address is assigned to the network adapter at the factory to uniquely identify the adapter at the physical layer.
Host Name	Displays the name of the mobile computer.

Double tap on a device **IPv6 Addresses** or **Temporary IPv6 address** to get more detailed information.

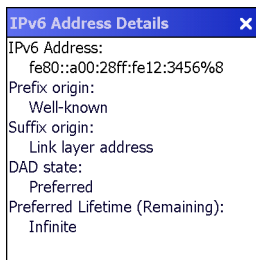


Figure 8-6 IPv6 Address Details Example

Table 8-5 IPv6 Address Details Fields

Field	Description
IPv6 Address	Displays the IPv6 address for which details are displayed.
Prefix origin	Displays the prefix origin for the IPv6 address. Possible values are Router Advertisement, Well-known, Manual, DHCPv6 or Unknown source.
Suffix origin	Displays the suffix origin for the IPv6 address. Possible values are Link layer address, Random, Well-known, Manual, DHCPv6 or Unknown source.
DAD state	Displays the Duplicate Address Detection state for the IPv6 address. Possible values are Preferred, Tentative, Deprecated, Duplicate or Invalid.
Preferred Lifetime (Remaining)	Displays the amount of time this address will remain in the Preferred state.

Wireless Log Window

The **Wireless Log** window displays a log of recent activity, such as authentication, association, and DHCP renewal completion, in time order. Save the log to a file or clear the log. The auto-scroll feature automatically scrolls down when new items are added to the log.

To open the **Wireless Log** window, tap **Wireless Log** in the **Wireless Status** window. The **Wireless Log** window displays.

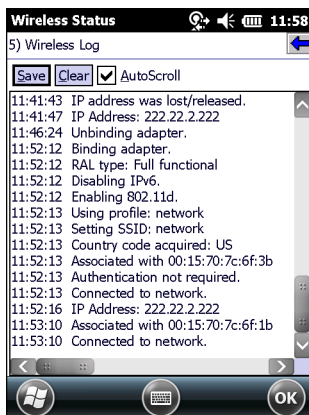


Figure 8-7 Wireless Log Window

Saving a Log

To save a Wireless Log:

1. Tap the **Save** button. The **Save As** dialog box displays.
2. Navigate to the desired folder.
3. In the **Name** field, enter a file name and then tap **OK**. The Wireless Log is saved as a text file in the selected folder.

Clearing the Log

To clear the log, tap **Clear**.

Logos & Certifications Window

The **Logos & Certifications** window displays a list of logos and compliance standards supported by this device, such as Wi-Fi Interoperability and Cisco Compatible Extensions. Select an item in the list to view the corresponding certificate. For a list of supported standards, see [Table 8-6 on page 8-8](#).

✓ **NOTE** If the certificate images corresponding to this device have been removed this menu entry may be hidden. Additionally, the certificate images may be removed to conserve storage space on the device.

To open the **Logos & Certifications** window, tap **Logos & Certifications** in the **Wireless Status** window.

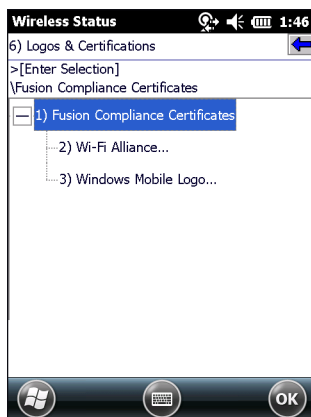


Figure 8-8 Logos & Certifications Window

- When viewing the certificate, controls to adjust the zoom and scroll are available.
- For certain certificates a link is available to view the certificate in a browser, if an internet connection is available.
- Supported standards are as follows:

Table 8-6 Logos & Certifications

Certification	Description
Wi-Fi Association	This certificate indicates the device has passed Wi-Fi Alliance interoperability tests.
Windows Mobile Logo	This certificate indicates the device has passed the Windows Mobile Logo test.

Versions Window

The **Versions** window displays software, firmware, and hardware version numbers.

To open the **Versions** window, tap **Versions** in the **Wireless Status** window.

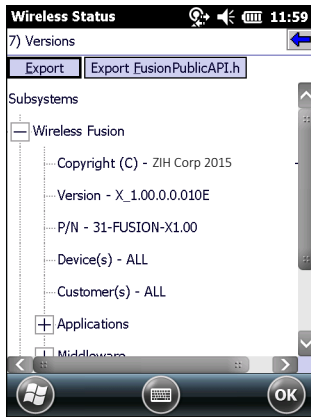


Figure 8-9 Versions Window

- The window displays Fusion software version numbers as well as application and middleware version information.
- Tap **Export** to export version information to a text file.
- Tap **Export FusionPublicApi.h** to export the current version of the FusionPublicAPI.h header file to the specified location.

Table 8-7 Version Sub-categories

Field	Description
Applications	Version information for Wireless Fusion Enterprise Mobility Suite applications.
Middleware	Version information for Wireless Fusion Enterprise Mobility Suite middleware components.
WLAN Adapters	Version and type information for WLAN adapters and the corresponding firmware and drivers.
Interface	Version and type information for the device's interface to the WLAN adapter and the corresponding firmware.
Device	Device model and identification numbers.
OS	Operating System version information.

CHAPTER 9 WIRELESS DIAGNOSTICS APPLICATION

Introduction

The **Wireless Diagnostics** application window provides links to perform ICMP Ping, Trace Routing, and Known APs functions. To open the **Wireless Diagnostics** window, tap the **Signal Strength** icon > **Wireless Diagnostics**.

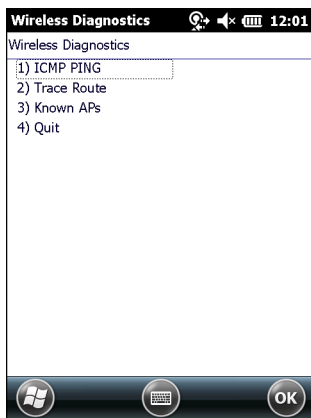



Figure 9-1 *Wireless Diagnostics Window*

The **Wireless Diagnostics** window contains the following options. Tap the option to display the option window.

- ICMP Ping - tests the wireless network connection.
- Trace Route - tests a connection at the network layer between the mobile computer and any place on the network.
- Known APs - displays the APs in range using the same ESSID as the mobile computer.
- Quit - Exits the **Wireless Diagnostics** window.

Option windows contain a back button  to return to the **Wireless Diagnostics** window.

ICMP Ping Window

The **ICMP Ping** window allows testing of a connection at the network layer (part of the IP protocol) between the mobile computer and any other device on the network. Ping tests only stop when the **Stop Test** button is selected, the **Wireless Diagnostics** application is closed, or if the mobile computer switches between infrastructure and ad-hoc modes.

To open the **ICMP Ping** window, tap **ICMP Ping** in the **Wireless Diagnostics** window.

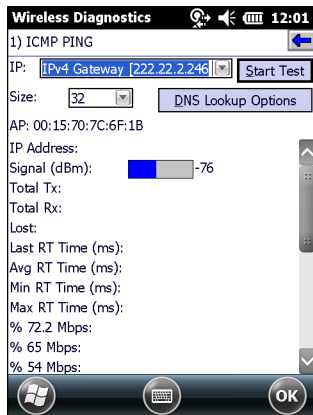


Figure 9-2 ICMP Ping Window

To perform an ICMP Ping:

1. In the **IP** field, enter an IP address or select an IP address from the drop-down list.
2. From the **Size** drop-down list, select a size value.
3. Tap **Start Test**. The ICMP Ping test starts. Information of the ping test displays in the appropriate fields.

The following statistics appear on the page:

- **IPv4 Address or IPv6 Address** – Target IP address.
- **Signal** - The current signal strength, measured in dBm, is provided both as a numerical value and as a histogram.
- **Total Tx** - The total number of pings sent is displayed numerically.
- **Total Rx** - The total number of valid ping responses received is displayed numerically.
- **Lost** - The total number of pings that were lost is displayed numerically.
- **RT Times** - Four round trip times: Last, Average, Minimum, and Maximum are displayed in milliseconds.
- **% Rates** - For each of the 14 data rates, the number of times that rate was used to transmit the ping is displayed as a percentage.

Use the **DNS Lookup Options** button to select the name resolution priority. Select the option and tap **OK** button. If a name is entered in the IP field, DNS Lookup Options setting will decide whether to use IPv4 or IPv6 address for the test. By default, this is set to IPv4 then IPv6, which indicates that it will try to resolve the name to an IPv4 address; if this fails and if IPv6 is enabled, it will try to resolve the name to an IPv6 address.

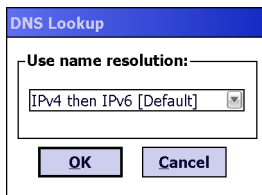


Figure 9-3 DNS Lookup Options Window

Graphs

A real time graph of any of the above statistics can be displayed by double tapping on that statistic.

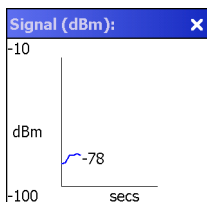


Figure 9-4 Graph Example

Trace Route Window

Trace Route traces a packet from a computer to a host, showing how many hops the packet requires to reach the host and how long each hop takes. The **Trace Route** utility identifies where the longest delays occur.

The **Trace Route** window allows testing a connection at the network layer (part of the IP protocol) between the mobile computer and any other device on the network.

To open the **Trace Route** window, tap **Trace Route** in the **Wireless Diagnostics** window.

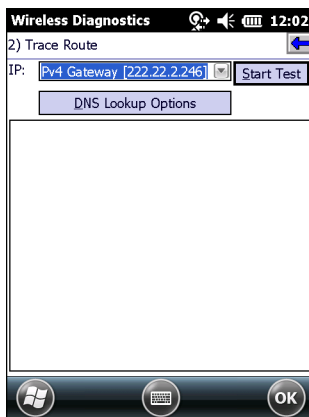


Figure 9-5 Trace Route Window

In the **IP** drop-down list, enter an IP address or choose one from the drop-down list, or enter a DNS Name and tap **Start Test**. When starting a test, the trace route attempts to find all routers between the mobile computer and the destination. The Round Trip Time (RTT) between the mobile computer and each router appears, along with the total test time. The total test time may be longer than all RTTs added together because it does not only include time on the network.

Use the **DNS Lookup Options** button to select the name resolution priority. Select the option and tap **OK** button. If a name is entered in the IP field, DNS Lookup Options setting will decide whether to use IPv4 or IPv6

address for the test. By default, this is set to IPv4 then IPv6, which indicates that it will try to resolve the name to an IPv4 address; if this fails and if IPv6 is enabled, it will try to resolve the name to an IPv6 address.

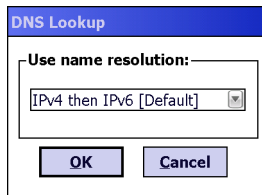


Figure 9-6 DNS Lookup Options Window

Known APs Window

The **Known APs** window displays the APs in range using the same ESSID as the mobile computer. This window is only available in **Infrastructure** mode. To open the **Known APs** window, tap **Known APs** in the **Wireless Diagnostics** window.

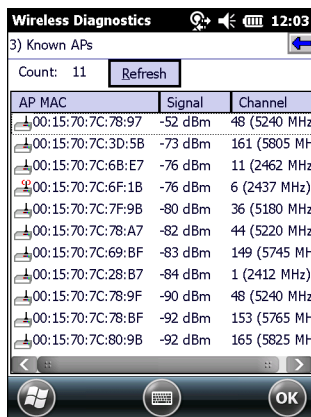


Figure 9-7 Known APs Window

See [Table 9-1](#) for the definitions of the icons next to the AP.

Table 9-1 Current Profile Window

Icon	Description
	The AP is the associated access point.
	The mobile computer is not associated to this AP.

CHAPTER 10 LOG ON/OFF APPLICATION

Introduction

There are two ways a user can connect to a profile when the profile requires credentials: either by using the **Manage Profiles** window, or by using the **Network Login** application. In the first case, Fusion automatically launches the Network Login window to allow the user to enter credentials when they are needed. In the second case, the user explicitly launches the Network Login window and supplies the credentials ahead of time and then tells the system to use them to connect. In either case, once the user has given the credentials, the user is said to have logged on (or in) to the profile. When the user has logged on to a profile, the system saves those credentials and the profile is said to have cached credentials.

When the user launches the **Network Login** application, the mobile computer may be in one of two states; the user may be logged onto one or more profiles, by having already entered credentials through the login window, or the user is not logged on to any profile. Each of these states has a separate set of use cases and a different look to the dialog box.

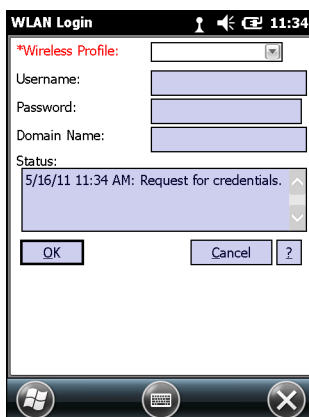


Figure 10-1 *Network Login In Window*

Logging On

If not already logged on to any profile, the user can launch the **Network Login** window in order to select a profile to log on to.

If already logged into one or more profiles, the user can launch the **Network Login** window to perform any of these functions:

- Connect to a different profile.
- Connect to and re-enable a cancelled profile. To do this:
 - Launch the **Network Login** window.
 - Select the cancelled profile from the **Wireless Profile** drop-down list.
 - Login to the profile.

✓ **NOTE** A cancelled profile can also be re-enabled by using the **Manage Profile** window to connect to the cancelled profile.

- Log off from all profiles simultaneously to prevent another user from accessing the current users network privileges.
- Switch mobile computer users. This is equivalent to performing a log off followed by a log on.

The appearance of the **Network Login** dialog box varies if it is:

- Launched by Fusion, because the service is connecting to a new profile that needs credentials.
- Launched by Fusion, because the service is trying to verify the credentials due to credential caching rules.
- Launched by a user, when a user is logged in.
- Launched by a user, when no user is logged in

Table 10-1 *Network Login Options*




Field	Description
Wireless Profile	When launching the login application, the Wireless Profile field lists all the wireless profiles that require credentials. This includes profiles that use EAP TLS, PEAP, LEAP, EAP-TTLS or EAP-FAST.
Profile Status icon	The profile status icon (next to the profile name) shows one of the following states:
	The profile is the current profile (always the case for Fusion Launched).
	The selected profile is enabled but is not the current profile.
	The selected profile is cancelled.
Username	Used to obtain secure access on the selected Wireless profile. The Username and Domain Name fields combined are limited to 63 characters. If the field label is red, then entry is mandatory; if black, then the entry is optional.

Table 10-1 *Network Login Options (Continued)*

Field	Description
Password	Along with the username, required to gain access to the network with the selected Wireless profile. The Password field is limited to 63 characters. If the field label is red, then entry is mandatory; if black, then the entry is optional.
Domain Name	Use to specify the network domain of the security server used for authentication. If the field label is red, then entry is mandatory; if black, then the entry is optional.
Mask Password checkbox	The Mask Password checkbox determines whether the password field is masked (i.e., displays only the '*' character) or unmasked (i.e., displays the entered text). Check the box to unmask the password. Uncheck the box to mask the password (the default).
Status Field	The status field indicates the reason the dialog is open.

Tap **OK** to send the credentials to Fusion. If one or more of the required fields is left blank, a dialog box displays requesting the user to fill in all required fields.

Logging Off

The user can log off from all profiles simultaneously by launching the Network Login window and tapping the Log Off button. The **Log Off** button only displays when a user has cached credentials for one or more profiles. When the **Log Off** button is selected, the user is prompted with three options: **Log Off**, **Switch Users**, and **Cancel**. Switching users logs off the current user and re-initialize the Network Login window to be displayed for when there is no user logged on. Logging off logs off the current user from all profiles and closes the login dialog box. Tapping **Cancel** closes the Log Off dialog box and returns to the Login dialog box.

When the user is logged off, the mobile computer only roams to profiles that do not require credentials or to profiles that were created with the credentials entered into the profile.

Tap the **Cancel** button to close the Network Login window without logging into the network. If the Network Login window was launched by Fusion and not by the user, tapping **Cancel** first causes a message box to display a warning that the cancel will disable the current profile. If the user still chooses to cancel the login at this point, the profile is cancelled.

Once a profile is cancelled, the profile is suppressed until a user actively re-connects to it.

✓ **NOTE** Entering credentials applies the credentials to a particular profile. Logging out clears all cached credentials. Editing a profile clears any cached credentials for that profile.

CHAPTER 11 CONFIGURATION PERSISTENCE

Introduction

When configuring the Fusion settings (i.e., profiles, options, user and root certificates, and PACs), they are saved in a Fusion database. This allows the Fusion settings to persist across a warm boot and a clean/cold boot.

This chapter discusses how to:

- export and import configuration data
- return the Fusion settings to their factory default values.

Exporting Fusion Configuration

The following configuration data can be exported to a file:

- Profiles
- Options
- PACs
- Certificates.

Use **Options > Import/Export** to export configuration database to a file and import previously exported data back into the database.

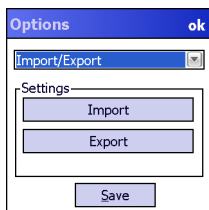


Figure 11-1 Options - Import/Export Dialog Box

To export configuration data:

1. In the **Options** menu, select **Import/Export**.
2. Select **Export**. The **Export File Wizard** appears.
3. In the **Select data to export** section, select the data to export.
4. Check the **Add user password to exported file** check box to assign a password to the file.
5. Enter a password in the text box.
6. Select **Overwrite conflicting records** check box to overwrite any conflicts on import. The overwrite flag is stored in the exported file and used during import.
7. Select **Delete file on successful import** check box to automatically delete the file after import. The delete file flag is stored in the exported file and used during import.

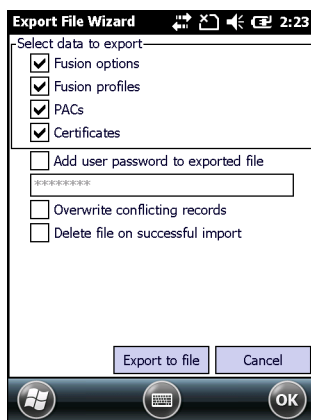


Figure 11-2 Export Options

8. Select **Export to file** to export the data to a file. The **Save As** window appears.

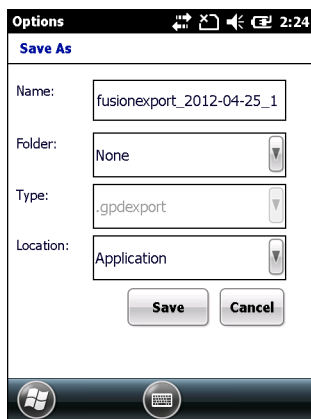


Figure 11-3 Save As Window

9. In the **Name** text box a file name is automatically populated. Change the filename if desired.
10. Use the **Folder** drop-down list to select a specific folder to save the file into.
11. Use the **Location** drop-down list to select the area of memory to save the file into.
12. Select **Save**.
13. Select **ok**.

Importing Fusion Configuration

To import configuration data:

1. In the **Options** menu, select **Import/Export**.
2. Select **Import**. The **Open** window appears.

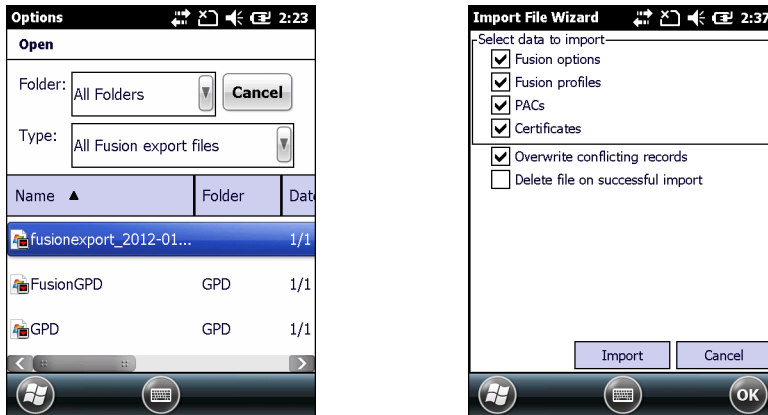


Figure 11-4 Import Options

3. Use the **Folders** drop-down list to locate the file to import.
4. Select a file in the list. If the file is protected, the Enter Password window appears.



Figure 11-5 Enter Password Window

5. Enter the password and then tap **OK**.

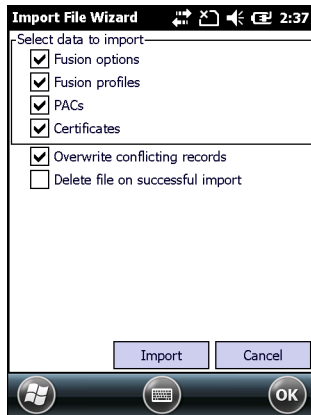


Figure 11-6 *Import File Wizard Window*

6. In the **Import File Wizard** window, select the data to import.
7. Select **Overwrite conflicting records** check box to overwrite any conflicts on import. This will apply entries contained in the import file over existing entries on the device for any conflicting entries. Note: Any changes made to Fusion Options will cause it to be considered a conflicting entry between the device's existing configuration and import file's configuration unless the Fusion Options are reset.
8. Select **Delete file on successful import** check box to automatically delete the file after import. Note: If the **Delete file on successful import** box is checked in the export wizard when generating the file, this checkbox is then "locked" to the checked state in the import wizard.
9. Select **Import**.
10. Select **ok**.

Auto Import of Configuration

Exported Fusion configuration files with the .gpdexport extension can be placed in the \Application folder. These files are automatically imported on a cold or clean boot.

For backward compatibility, Fusion configuration stored in legacy registry files are also automatically imported on a cold or clean boot.



CAUTION GPD sub-folder in the \Application folder is a Fusion private area for cold boot persistence. Data in this folder must not be modified by the user.

Returning to Factory Default Settings

To return the Fusion settings to their factory default values, use **Fusion Options > Data Management**.

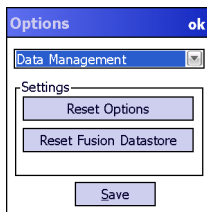


Figure 11-7 *Options - Data Management Dialog Box*

Tap **Reset Options** button to reset the Fusion options to factory default values.

Tap **Reset Fusion Data Store** to reset all configuration data including options, profiles, PACs and certificates to the factory default values.

CHAPTER 12 CONFIGURATION EXAMPLES

Introduction

This chapter provides example procedures for configuring specific authentication and encryption types.

EAP-FAST/MS Chap v2 Authentication

To configure EAP-FAST and MS Chap v2 authentication:

1. Tap **Start > Wireless Companion > Wireless Launch**.

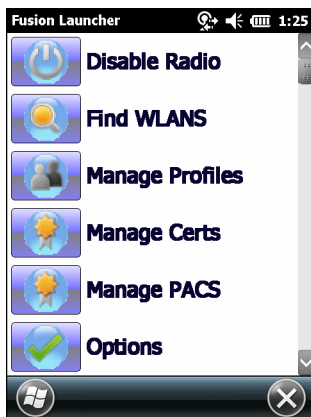


Figure 12-1 *Wireless Launcher Menu*

2. Select **Options**. The **Options** window appears.
3. In the drop-down list, select **Auto PAC Settings**. The **Auto PAC Settings** window appears.

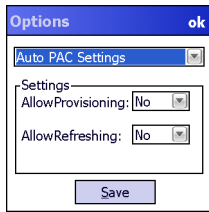


Figure 12-2 Auto PAC Settings Window

4. In the **Allow Provisioning** drop-down list, select **Yes**.
5. In the **Allow Refreshing** drop-down list, select **Yes**.
6. Tap **Save**.
7. Tap **ok**.
8. Tap **Start > Wireless Companion > Wireless Launch**.
9. Select **Manage Profiles**. The **Manage Profiles** window appears.
10. Tap and hold in the window and select **Add** from the pop-up menu. The **Profile Editor** window appears.
11. In the **Profile Name** text box enter a name for the profile.
12. In the **ESSID** text box enter the ESSID.

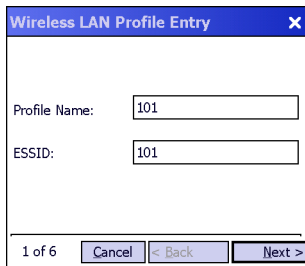


Figure 12-3 Profile ID Dialog Box

13. Tap **Next**. The **Operating Mode** dialog box displays.
14. In the **Operating Mode** drop-down list, select **Infrastructure**.

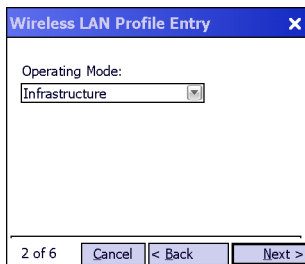


Figure 12-4 Operating Mode Dialog Box

15. Tap **Next**. The **Security Mode** dialog box displays.
16. In the **Security Mode** drop-down list, select **WPA2-Enterprise**.

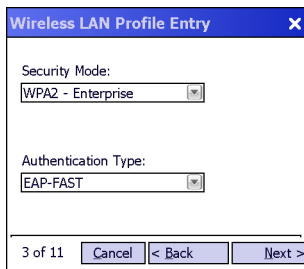


Figure 12-5 Authentication Dialog Box

17. In the **Authentication** drop-down list, select **EAP-FAST**.
18. Tap **Next**. The **Tunneled Authentication Type** dialog box displays.
19. In the **Tunneled Authentication Type** drop-down list, select **MS CHAP v2**.

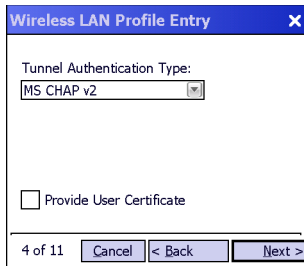


Figure 12-6 Tunneled Authentication Dialog Box

20. Select the **Provide User Certificate** check box if a certificate is required.
21. Tap **Next**. The **Installed User Certificates** dialog box appears.

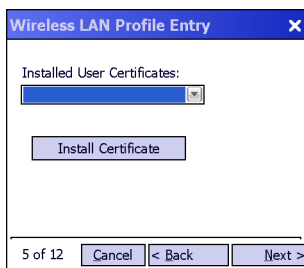


Figure 12-7 Installed User Certificates Dialog Box

22. Select a certificate from the drop-down list of currently installed certificates before proceeding. The selected certificate's name appears in the drop-down list.
If the required certificate is not in the list, tap **Install Certificate**. See [User Certificate Installation on page 4-7](#) for information on installing User Certificates.
23. Tap **Next**. The **Install Server Certificate** dialog box appears.

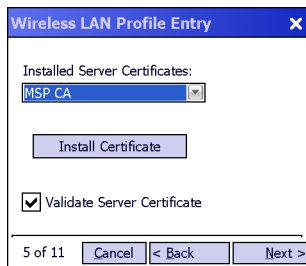


Figure 12-8 *Installed Server Certificates Dialog Box*

24. Select a certificate from the drop-down list of currently installed certificates. The selected certificate's name appears in the drop-down list.

If the required certificate is not in the list, tap **Install Certificate**. See [Server Certificate Installation on page 4-10](#) for information on installing Server Certificates.

25. Tap **Next**. The **User Name** dialog box appears.

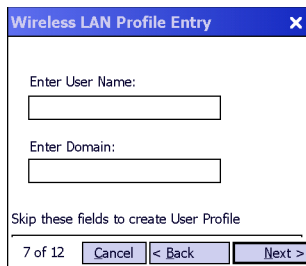


Figure 12-9 *User Name Dialog Box*

The user name and password can be entered (but is not required) when the profile is created. If the username and password are not entered in the profile, then when attempting to connect, the user is prompted to supply them. The entered information (credentials) will be saved (cached) for future reconnections.

26. Tap **Next**. The **Password** dialog box appears.

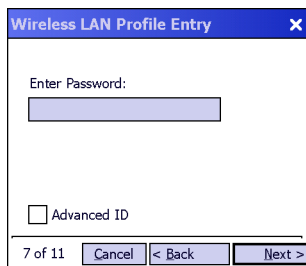


Figure 12-10 *Password Dialog Box*

27. In the **Enter Password** text box, enter a password. Note that if a username was entered and no password is entered, Fusion assumes that no password is a valid password.
28. Select the **Advanced ID** check box, if advanced identification is desired.
29. Tap **Next**.

If the **Advanced ID** is not selected, the **Prompt for Login** dialog box appears. Go to step 31.

The **Advanced ID** dialog box appears.

30. Use the **Advanced ID** dialog box to enter the 802.1X identity to supply to the authenticator. This value can be 63 characters long and is case sensitive. In TTLS and PEAP, it is recommended entering the identity *anonymous* (rather than a true identity) plus any desired realm (e.g., *anonymous@myrealm*). A user ID is required before proceeding.

Figure 12-11 *Advanced Identity Dialog Box*

31. Tap **Next**. The **Prompt for Login** dialog box displays. See [Credential Cache Options on page 4-13](#) for detailed information on configuring Login settings.

Figure 12-12 *Prompt for Login at Dialog Box*

32. Tap **Next**. The **Encryption** dialog box displays.

33. In the **Encryption Type** drop-down list, select **AES**.

Figure 12-13 *Encryption Dialog Box*

34. Tap **Next**. The **IP Address Type** dialog box displays.

Figure 12-14 *IP Address Entry Dialog Box*

35. Ensure that all three check boxes are selected.

36. Tap **Next**. The **Battery Usage** dialog box appears.

37. In the **Battery Usage Mode** dialog box select a power consumption option.

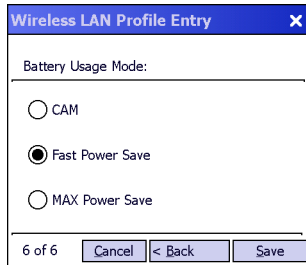


Figure 12-15 *Battery Usage Dialog Box*

38. Tap **Save**.

CHAPTER 13 NO USER INTERFACE FEATURES

This chapter describes the features of Fusion that can be turned on and off but do not have a standard Fusion user interface. Instead, these features are controlled by registry settings or via infrastructure settings. The following features are described in this chapter:

- Network Policy Configuration Service (NPCS).

Network Policy Configuration Service

Network Policy Configuration Service (NPCS) is a Microsoft feature. This policy is defined via a Microsoft registry key to indicate whether WLAN should be enabled or disabled. If the NPCS registry key is set then:

- The wireless radio must be powered off;
- Users must not be able to scan or connect to WLAN access points.
- Users must not be able to send or receive data over a WLAN.
- WLAN-related UI must be disabled, hidden or grayed out.
- If the wireless LAN stack exposes any WLAN API's for third party applications they must be disabled.

WLAN can be re-enabled if the registry key is properly modified.

NPCS registry key has the following syntax:

```
[HKEY_LOCAL_MACHINE\Comm\NetworkPolicy\WiFi]
```

```
“Disabled”=dword:0
```

Default registry key setting of 0 (or key not present) implies the policy is disabled. This allows WLAN to function normally. A key value of 1 (or greater) implies the policy is enabled. This enforces the policy by disabling the radio and all the WLAN related User Interfaces.

GLOSSARY

A

API. An interface by means of which one software component communicates with or controls another. Usually used to refer to services provided by one software component to another, usually via software interrupts or function calls

C

Clean Boot. See Cold Boot.

Cold Boot. A cold boot restarts the mobile computer and erases all user stored records and entries. The operating system is reloaded; files not stored in “protected” folders are erased; the registry is erased and reloaded from “REG” files saved in protected folders.

Cradle. A cradle is used for charging the terminal battery and for communicating with a host compute. It also provides a storage place for the terminal when not in use.

H

Hard Reset. See Cold Boot.

Host Computer. A computer that serves other terminals in a network, providing such services as computation, database access, supervisory programs and network control.

I

IEEE Address. See **MAC Address.**

I/O Ports. interface The connection between two devices, defined by common physical characteristics, signal characteristics, and signal meanings. Types of interfaces include RS-232 and PCMCIA.

Input/Output Ports. I/O ports are primarily dedicated to passing information into or out of the terminal's memory. Series 9000 mobile computers include Serial and USB ports.

IP. Internet Protocol. The IP part of the TCP/IP communications protocol. IP implements the network layer (layer 3) of the protocol, which contains a network address and is used to route a message to a different network or subnetwork. IP accepts "packets" from the layer 4 transport protocol (TCP or UDP), adds its own header to it and delivers a "datagram" to the layer 2 data link protocol. It may also break the packet into fragments to support the maximum transmission unit (MTU) of the network.

IP Address. (Internet Protocol address) The address of a computer attached to an IP network. Every client and server station must have a unique IP address. A 32-bit address used by a computer on a IP network. Client workstations have either a permanent address or one that is dynamically assigned to them each session. IP addresses are written as four sets of numbers separated by periods; for example, 204.171.64.2.

K

Key. A key is the specific code used by the algorithm to encrypt or decrypt the data. Also see, **Encryption** and **Decrypting**.

M

MC. Mobile Computer.

Mobile Computer. In this text, *mobile computer* refers to a Zebra hand-held computer. It can be set up to run as a stand-alone device, or it can be set up to communicate with a network, using wireless radio technology.

O

Open System Authentication. Open System authentication is a null authentication algorithm.

P

PAN . Personal area network. Using Bluetooth wireless technology, PANs enable devices to communicate wirelessly. Generally, a wireless PAN consists of a dynamic group of less than 255 devices that communicate within about a 33-foot range. Only devices within this limited area typically participate in the network.

Parameter. A variable that can have different values assigned to it.

PING. (Packet Internet Groper) An Internet utility used to determine whether a particular IP address is online. It is used to test and debug a network by sending out a packet and waiting for a response.

Q

QWERTY. A standard keyboard commonly used on North American and some European PC keyboards. “QWERTY” refers to the arrangement of keys on the left side of the third row of keys.

R

RAM. Random Access Memory. Data in RAM can be accessed in random order, and quickly written and read.

RF. Radio Frequency.

Router. A device that connects networks and supports the required protocols for packet filtering. Routers are typically used to extend the range of cabling and to organize the topology of a network into subnets. See **Subnet**.

S

Shared Key. Shared Key authentication is an algorithm where both the AP and the MU share an authentication key.

Soft Reset. See **Warm Boot**.

Subnet. A subset of nodes on a network that are serviced by the same router. See **Router**.

Subnet Mask. A 32-bit number used to separate the network and host sections of an IP address. A custom subnet mask subdivides an IP network into smaller subsections. The mask is a binary pattern that is matched up with the IP address to turn part of the host ID address field into a field for subnets. Default is often 255.255.255.0.

T

TCP/IP. (Transmission Control Protocol/Internet Protocol) A communications protocol used to internetwork dissimilar systems. This standard is the protocol of the Internet and has become the global standard for communications. TCP provides transport functions, which ensures that the total amount of bytes sent is received correctly at the other end. UDP is an alternate transport that does not guarantee delivery. It is widely used for real-time voice and video transmissions where erroneous packets are not retransmitted. IP provides the routing mechanism. TCP/IP is a routable protocol, which means that all messages contain not only the address of the destination station, but the address of a destination network. This allows TCP/IP messages to be sent to multiple networks within an organization or around the world, hence its use in the worldwide Internet. Every client and server in a TCP/IP network requires an IP address, which is either permanently assigned or dynamically assigned at startup.

Terminal. See **Mobile Computer**.

TFTP. (Trivial File Transfer Protocol) A version of the TCP/IP FTP (File Transfer Protocol) protocol that has no directory or password capability. It is the protocol used for upgrading firmware, downloading software and remote booting of diskless devices.

U

UDP. User Datagram Protocol. A protocol within the IP protocol suite that is used in place of TCP when a reliable delivery is not required. For example, UDP is used for real-time audio and video traffic where lost packets are simply ignored, because there is no time to retransmit. If UDP is used and a reliable delivery is required, packet sequence checking and error notification must be written into the applications.

W

Warm Boot. A warm boot restarts the mobile computer and closes all running programs. All data that is not saved to flash memory is lost.

WZC. Wireless Zero Config. Microsoft application used to configure wireless 802.11 radio.

INDEX

Numerics

802.11 ESSID 4-2

A

ad-hoc 4-2
ad-hoc networks 7-2
advanced ID 4-12
AES 4-16, 4-17
AP networks 7-2
at connect 4-14
at time 4-14
authentication
 EAP-FAST 4-5
 EAP-TLS 4-5
 LEAP 4-5
 none 4-5
 PEAP 4-5
 TTLS 4-5
authentication type 4-5

B

battery usage 4-23
 CAM 4-23
 MAX power save 4-23
bluetooth
 ad-hoc mode 4-2
bullets x

C

channel 2-1, 4-2
conventions
 notational x
create profile 2-3, 3-2

D

DCP x
Device Configuration Package x

E

EAP-TLS 4-5
edit profile 3-3
EMDK for C x
encryption 4-15
 AES 4-16
 open 4-16
 open system 4-16
 TKIP 4-16
 WEP-104 (104/24) 4-16
 WEP-40 (40/24) 4-16
Enterprise Mobility Developer Kit for C x
ESSID 4-1, 4-2
export profile 3-3
Extensible Authentication Protocol-Generic Token Card .
 4-6

F

Find WLANs application 2-1

G

gateway 4-21

H

hexadecimal keys 4-16

- I**
- infrastructure 4-2
 - IP address 4-21
 - IP config
 - IP address 4-21
 - subnet mask 4-21
 - WINS 4-22
 - IPv4 address entry 4-19
- L**
- LEAP 4-5
 - Legacy (Pre - WPA) 4-4
- M**
- Manage Profile application 3-1
 - masked characters 4-16
 - MD5 4-6
 - Message Digest-5 4-6
 - Microsoft Challenge Handshake Authentication Protocol
4-6
 - Microsoft Challenge Handshake Authentication Protocol
version 2 4-7
 - mode
 - 802.11 ESSID 4-2
 - ad-hoc 4-2
 - infrastructure 4-2
 - operating 4-2
 - profile name 4-2
 - MS CHAP 4-6
 - MS CHAP v2 4-7
- N**
- network type 2-1
 - notational conventions x
- O**
- on resume 4-14
 - open system 4-16
 - operating mode 4-2
- P**
- pass-phrase 4-16, 4-18
 - password 4-11
 - PEAP 4-5
 - power usage
 - fast power save 4-23
 - profile
 - create new 3-3
 - delete 3-3
 - edit 3-3
 - export 3-3
 - name 4-2
 - order 3-3
 - Profile Editor Wizard 4-1
 - profile name 4-1, 4-2
 - profile roaming 3-4
- S**
- security mode 4-3
 - server certificate install 4-9
 - set static DNS address 4-21
 - set static WINS address 4-21
 - signal strength 2-1, 8-2
 - subnet mask 4-21
- T**
- TKIP 4-16, 4-17
 - transmit power 4-22
 - tunneled authentication 4-5
 - CHAP 4-6
 - EAP-GTC 4-6
 - MD5 4-6
 - MS CHAP 4-6
 - MS CHAP v2 4-7
 - PAP 4-7
 - TLS 4-7
- U**
- user name 4-11
- W**
- WEP-104 4-17
 - WEP-40 4-17
 - WINS 4-22
 - Wireless Launcher
 - exit 1-6
 - Wireless Launcher menu
 - hide 1-5
 - WPA - Enterprise 4-4
 - WPA - Personal 4-4
 - WPA2 - Enterprise 4-4
 - WPA2 - Personal 4-4



Zebra Technologies Corporation
Lincolnshire, IL U.S.A.
<http://www.zebra.com>

Zebra and the stylized Zebra head are trademarks of ZIH Corp., registered in many jurisdictions worldwide. All other trademarks are the property of their respective owners.

©2015 ZIH Corp and/or its affiliates. All rights reserved.

