

# WORKABOUT PRO SCANNER/IMAGER END-CAP INSTALLATION

## I. Preparation



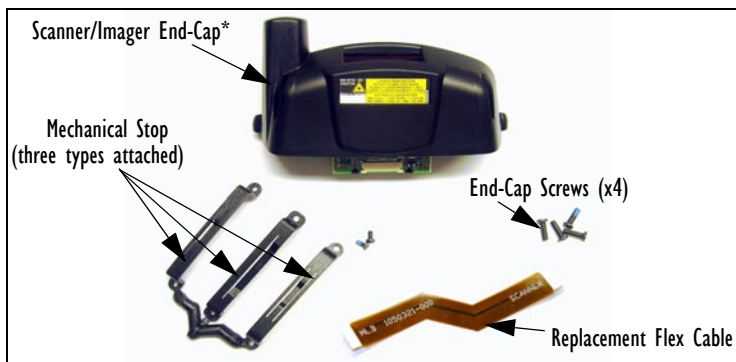
**Warning:** The installation of this scanner/imager end-cap must be performed using the appropriate anti-static devices. If unavailable, discharge static from your body by touching a grounded metallic object before opening any covers on the unit.



**Warning:** The use of optical instruments with this product will increase eye hazard. This product may contain a laser scanner that emits less than 1.4 mW maximum radiant power at a wavelength of 650 nm. This product complies with CRH 21 CFR 1040 Class II and IEC 60825-1:1993+A1:1997+A2:2001 Class 2 laser product

The following table lists the available end-cap model numbers:

End-Cap Model Number	Scanner/Imager Type
WA9113-G1	EV15 with GSM
WA9103-G1	EV15 without GSM
WA9112-G1	SE955 with GSM
WA9102-G1	SE955 without GSM



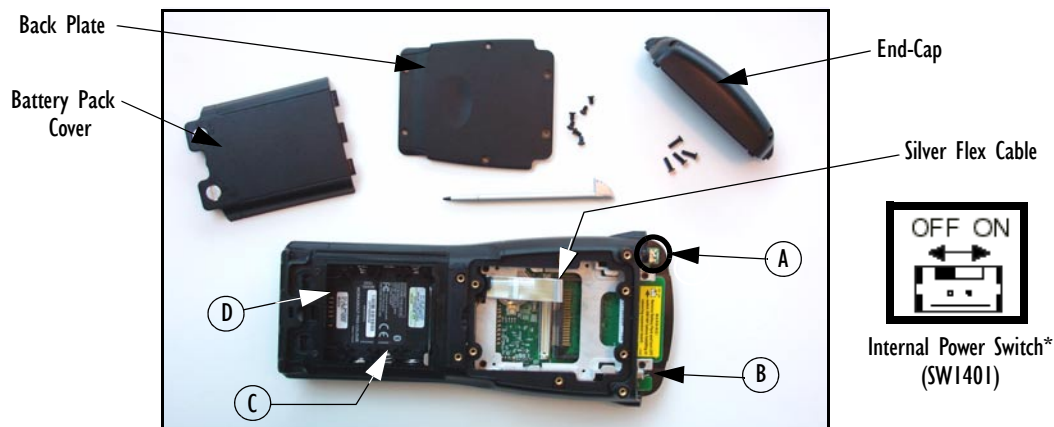
\*The end-cap in your kit varies depending on the configuration of the WORKABOUT PRO. The sample end-cap above is for an SE955 scanner with a GSM radio.

Figure 1 End-Cap Kit Contents



**Important:** Back up any data in RAM first, since it will be erased when the internal power of the WORKABOUT PRO is turned off.

1. If your unit is using AC power, disconnect it.
2. Remove the stylus from the end-cap to use in removing the battery pack cover.
3. Remove the battery pack.
4. Switch off internal power (see Figure 2 for switch location).
5. Remove the back plate from the unit.



\*The internal power switch is located at A or B for WORKABOUT PRO first-generation units. On second-generation units, it is located in the battery compartment at C or D.

Figure 2 Disassembling The WORKABOUT PRO

March 10, 2008

8100142 Rev. C Sheet 1 of 1

## 2. Installation

If an 802.11b/g radio is installed in your unit, you may need to replace the existing mechanical stop with a new one. Figure 3 shows the older mechanical stop to be removed, along with the new mechanical stop to be installed.

New Mechanical Stop - The type of stop chosen depends on the type of radio in your unit.  
(PN 1051007)



Figure 3 Mechanical Stops

1. Unscrew the four screws holding the old mechanical stop in place.
2. Choose the mechanical stop that is compatible with your radio (see above).
3. Secure the stop in place, tightening the two screws provided to 3 lb-in (0.34 N·m) or until finger-tight.
4. Switch internal power on (see Figure 2 for switch locations).
5. Place the new scanner/imager end-cap onto the hand-held.
6. Tighten the end-cap screws provided with the kit to a torque of 3 lb-in (0.34 N·m) or until finger-tight.
7. Gently pull up the locking lever on the 22-pin connector on the main logic board of the WORKABOUT PRO, using a thin slot-head screw driver.
8. Remove the old silver-coloured flex cable (see Figure 2).
9. Insert the end of the new flex cable marked MLB into the connector.
10. Press the locking lever down to lock the connector.
11. Insert the other end of the flex cable (marked SCANNER) into the connector on the end-cap.

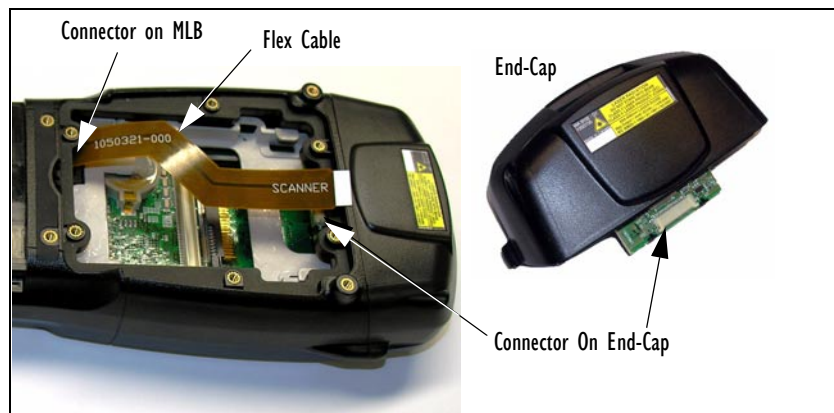


Figure 4 The New Scanner Cable

## 3. Enabling The Scanner/Imager

1. Simultaneously press and hold down the [BLUE][ENTER] and left [SCAN] keys for a minimum of 6 seconds.
2. At the Command> prompt, type *s* to display a menu of available scanners and imagers.



**Note:** To access the letter 's' on a first-generation WORKABOUT PRO S unit, press [ALPHA], press [7] four times, and then press [ALPHA] again. On a second-generation WORKABOUT PRO S unit, press [FN], press [7] four times, and then press [FN] again.

3. From the menu displayed, type the number that corresponds with the type of scanner or imager installed in your unit.
4. At the Command> prompt, type *1* (one) to reboot the unit to the main OS.

### COMPANY HEADQUARTERS AND CANADIAN SERVICE CENTRE

2100 Meadowvale Boulevard, Mississauga  
Ontario, Canada L5N 7J9  
Tel: +1 905 813 9900  
Fax: +1 905 812 6300  
E-mail: salescdn@psion.com