

WA9901 - RFID MODULE UHF LINEAR (NA) ENDCAP H/W INSTALLATION SHEET



Important: All Approval and safety information is outlined in the *Workabout Pro4 Regulatory & Warranty Guide* – part number **8000296-001** provided with each Workabout Pro4.

Warning: *The Workabout Pro4 with the RFID option must not be held closer than 20 cm from the rest of the body. This product must not be used in a holster or on a belt-clip. RFID cannot be used in co-transmission with WAN module.*



1. Product Description

Easily installable expansion modules for the Workabout Pro4 allow you to customise this handheld to meet your specific mobile computing requirements. This chapter outlines how to install the NA UHF Linear RFID Module.

The RFID MODULE UHF LINEAR NA (WA9901) kit is based on the Sailfish UHF module from Zebra (Model: 21-121559). It is made of 4 parts:

- ASSY MODULE UHF WAP4 NA
- ASSY ANTENNA LINEAR NA WAP4
- INSTRUCTION SHEET WAP4 UHF LINEAR NA
- LABELS FCC WAP4 UHF LINEAR VARIANT

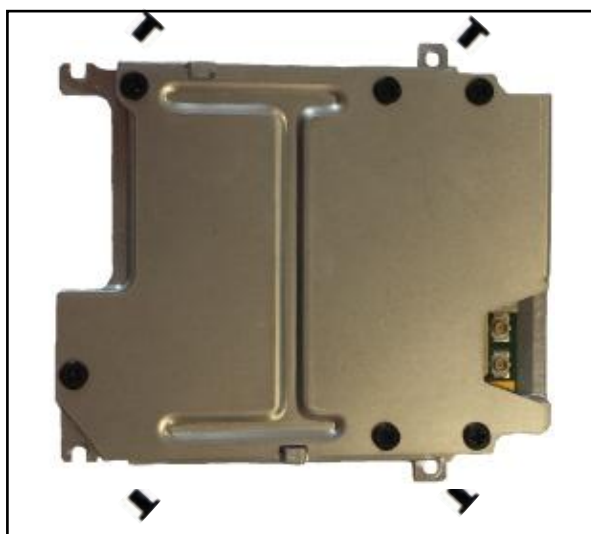


Figure 1-1 *ASSY MODULE UHF WAP4 NA*



Figure 1-2 ASSY ANTENNA LINEAR NA WAP4



Figure 1-3 INSTRUCTION SHEET WAP4 UHF LINEAR NA

2. Product Installation

Before installing a module in the Workabout Pro4, all power sources must be turned off.

- Remove the battery. If your unit is using AC power, disconnect it.



Figure 2-1 *Battery location*

With the power shut down, you can now install the American RFID Module.

- Remove the existing endcap and pod or backplate

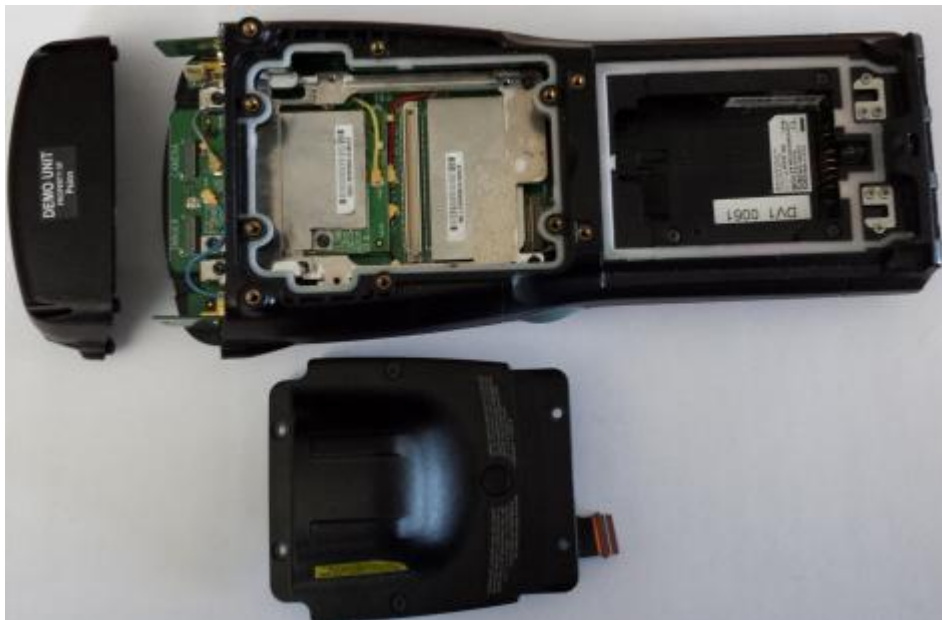


Figure 2-2 *WAP4 Disassembled*

- Slide the RFID Module inside the back opening

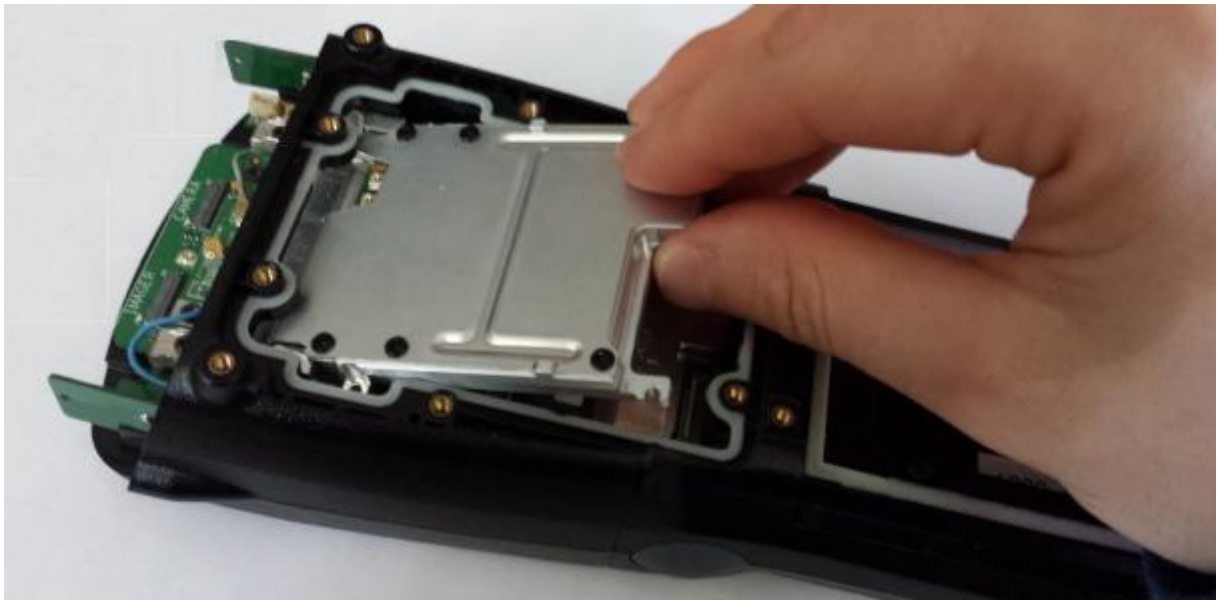


Figure 2-3 *RFID Module Assembly*

- Drive (2Kgf.cm / 1.7 lbs.In) the 4 screws that fix the RFID module on WAP4 frame

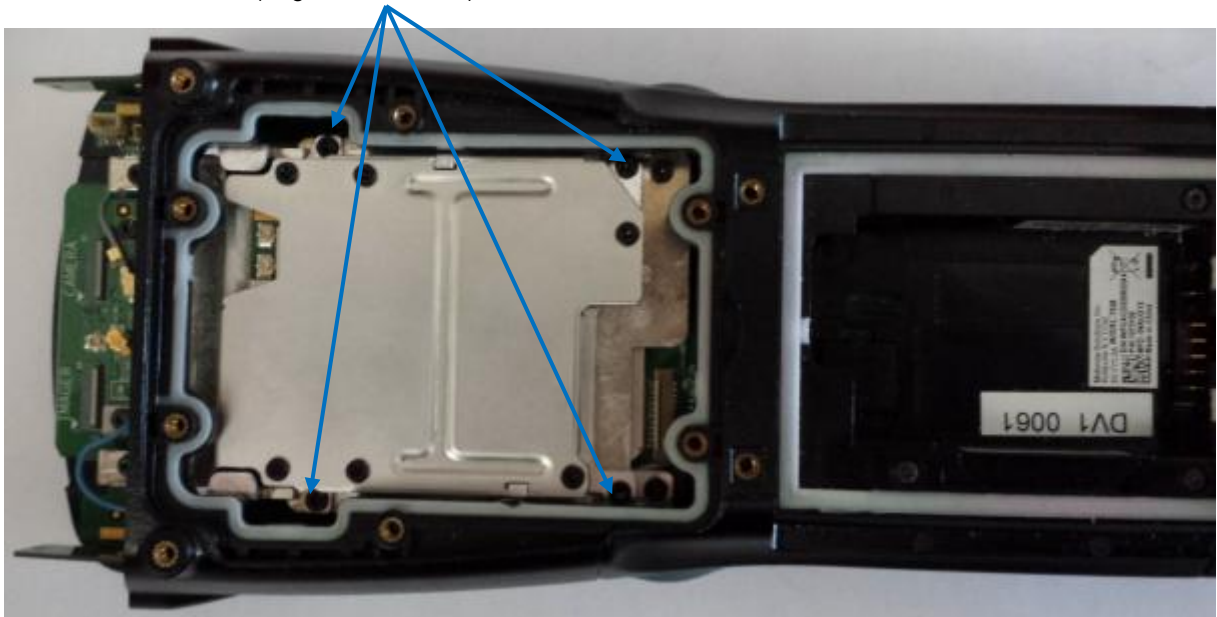


Figure 2-4 *RFID Module Assembly*

Place the antenna in the right slot:

- For WAP4 with WLAN only (7528XUHFN), antenna must be placed in the bottom slot



Figure 2-5 Antenna position for WLAN only WAP4 version

- For WAP4 with WWAN (7528XPUHFN) or GPS, antenna must be placed in the middle slot



Figure 2-6 Antenna position for WWAN or GPS WAP4 version



Antenna should be correctly inserted in the rubber

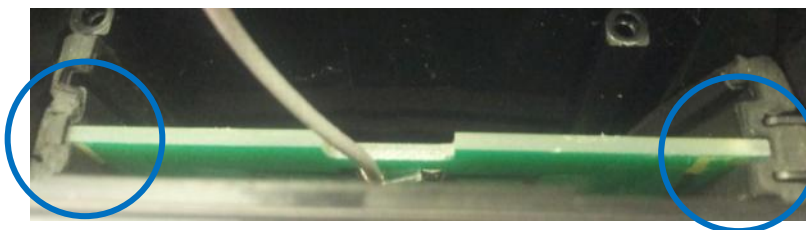


Figure 2-7 Right insertion (antenna is pushed totally in the rubber)

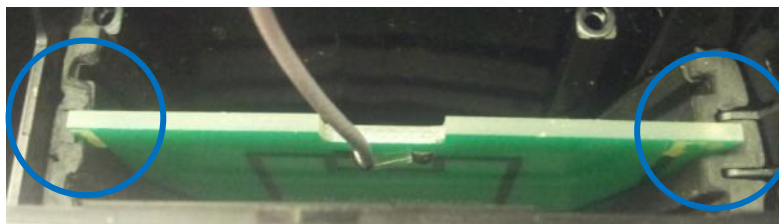


Figure 2-8 Wrong insertion (antenna comes out of the rubber)

- Drive (2Kgf.cm / 1.7 lbs-In) the 2 self-tapping screws to fix the antenna stopper

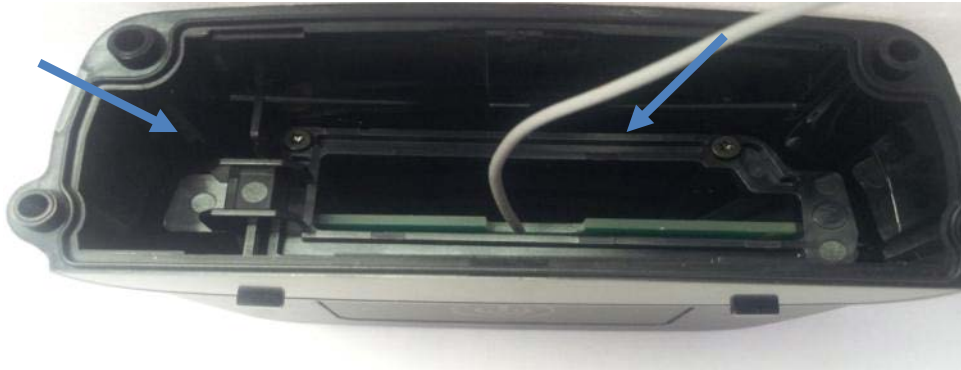


Figure 2-9 Antenna stopper assembly

- Plug the U.FL antenna connector to the Sailfish module.



Warning: Make sure you use the proper RF port (right side of the Sailfish)



Figure 2-5 Linear antenna Assembly

- Reassemble the pod or backplate and the endcap (3 Kgf.cm / 2.6 lbs.In)



Figure 2-6 *Final Assembly*

For WAP4 with WWAN (7528XPUHFN) affix label showing 'MODEL: 7528XPUHFN'.
For WAP4 with WLAN only (7528XUHFN) affix label showing 'MODEL: 7528XUHFN'.

Stick the label in the location following depends on WorkAbout Pro4 variant:



Figure 2-7 *WorkAbout Pro4 Long Alphanumeric Keyboard*



Figure 2-8 *WorkAbout Pro4 Short Numeric Keyboard*

3. BooST configuration

For this installation, you will also need BooST script software, a USB flash drive, and a desktop docking station. Please contact <http://www.zebra.com/support> to receive the appropriate BooST script software.

4. Software installation:



To get current driver for WorkAbout Pro4, go to the website at: <http://www.zebra.com/support>

- Copy and install the latest CAB file named “WAP4 RFID UHF CAB”.

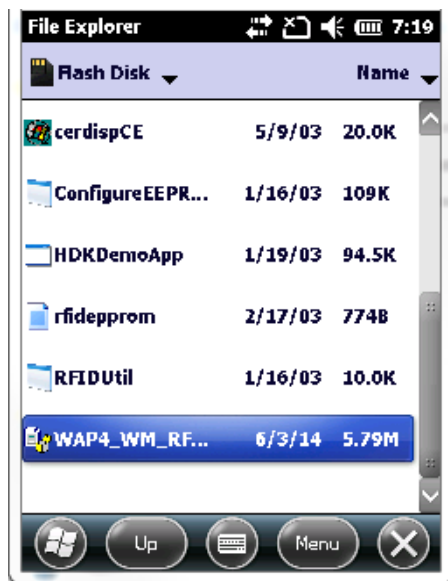


Figure 4-1 Driver CAB file



Figure 4-2 Driver installation

- After installation, select **RFID Demo** in the **Start** menu to start the RFID sample application.



Figure 4-3 RFID demo Icon

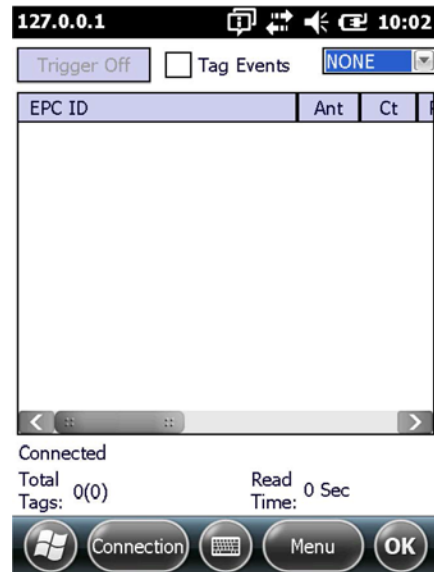


Figure 4-4 RFID Sample Application Window

- To read the ID of TAG, press the **Trigger** button. Put the TAG in front of the antenna. Release trigger button to terminate tag reading.

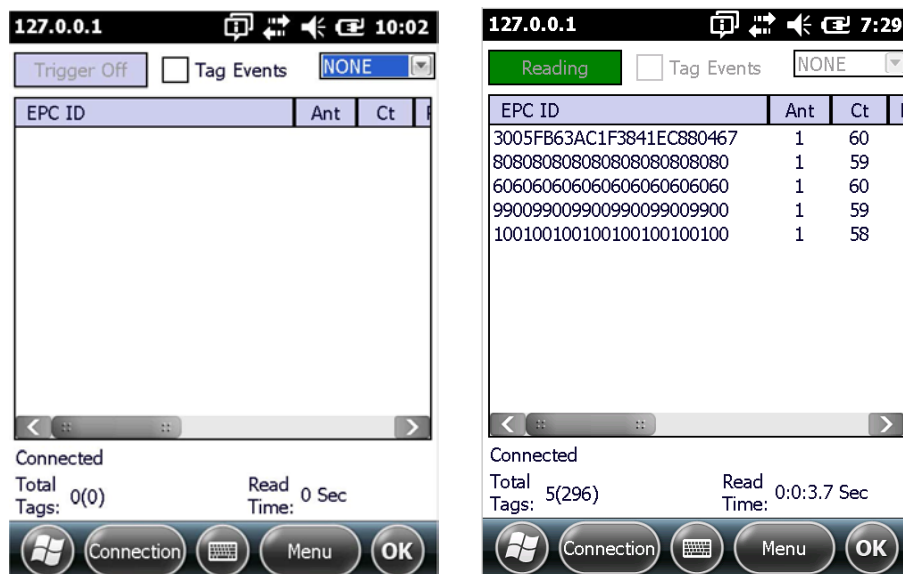


Figure 4-5 ID Tag Reading

For detailed instructions on how to use the RFID demo application, please visit <http://www.zebra.com/support> . Download the *Workabout Pro4 RFID Mobile Computer User Guide* at the following link: <http://www.ingenuityworking.com/knowledge/w/knowledgebase/1525.workabout-pro4-product-manuals.aspx>

5. Reading area:

This area depends on the TAG type, TAG packaging, Tag position and environment (metallic or not).



Figure 4-1 Reading area

RFID MODULE UHF LINEAR NA ENDCAP RFID Regulatory information
--

IMPORTANT NOTE FOR NORTH AMERICA:

The RFID must not be used whilst the host WORKABOUTPRO4 is being powered by the ac/dc adaptor.

FCC Information to Users:

Radiation Exposure Compliance

This product complies with the FCC RF exposure limits for an uncontrolled environment. For continued compliance, the product must not be held closer than 20 cm from the rest of the body. This product must not be used in a holster or on a belt-clip.

The host WORKABOUTPRO4 is configured to prevent WAN and RFID to be in co-transmission. The user cannot activate both at the same time.

Federal Communication Commission Interference Statement.

This equipment has been tested and found to comply with the limits for a Class B digital device, pursuant to Part 15 of the FCC Rules.

These limits are designed to provide reasonable protection against harmful interference in a residential installation. This equipment generates uses and can radiate radio frequency energy and, if not installed and used in accordance with the instructions, may cause harmful interference to radio communications. However, there is no guarantee that interference will not occur in a particular installation.

If this equipment does cause harmful interference to radio or television reception, which can be determined by turning the equipment off and on, the user is encouraged to try to correct the interference by one of the following measures:

- Reorient or relocate the receiving antenna.
- Increase the separation between the equipment and receiver.
- Connect the equipment into an outlet on a circuit different from that to which the receiver is connected.
- Consult the dealer or an experienced radio/TV technician for help.

THIS DEVICE COMPLIES WITH PART 15 OF THE FCC RULES. OPERATION IS SUBJECT TO THE FOLLOWING TWO CONDITIONS: (1) THIS DEVICE MAY NOT CAUSE HARMFUL INTERFERENCE, AND (2) THIS DEVICE MUST ACCEPT ANY INTERFERENCE RECEIVED, INCLUDING INTERFERENCE THAT MAY CAUSE UNDESIRE OPERATION.

FCC Caution: Any changes or modifications not expressly approved by the party responsible for compliance could void the user's authority to operate this equipment.

Emissions Information for Canada:

This Class B digital apparatus complies with Canadian ICES-003.
Cet appareil numérique de la classe B est conforme à la norme NMB-003 du Canada.

This device complies with Industry Canada license-exempt RSS standard(s). Operation is Subject to the following two conditions: (1) this device may not cause interference, and (2) this device must accept any interference, including interference that may cause undesired operation of the device.

Le présent appareil est conforme aux CNR d'Industrie Canada applicables aux appareils radio exempts de licence. L'exploitation est autorisée aux deux conditions suivantes : (1) l'appareil ne doit pas produire de brouillage, et (2) l'utilisateur de l'appareil doit accepter tout brouillage radioélectrique subi, même si le brouillage est susceptible d'en compromettre le fonctionnement.

Service Information

If you have a problem using the equipment, contact your facility's Technical or Systems Support. If there is a problem with the equipment, they will contact the Global Support Center at: <http://www.zebra.com/support>.



Zebra Technologies Corporation
Lincolnshire, IL U.S.A.
<http://www.zebra.com>

Zebra and the stylized Zebra head are trademarks of ZIH Corp., registered in many jurisdictions worldwide. All other trademarks are the property of their respective owners.

© 2016 Symbol Technologies LLC



8000327-002 Revision A – March 2016