

WA9902 - RFID MODULE UHF LINEAR (CE) ENDCAP H/W INSTALLATION SHEET



Important: All Approval and safety information is outlined in the 'WORKABOUTPRO4 Regulatory & Warranty Guide – part number **8000296** provided with each WORKABOUTPRO4.

Warning: *The WORKABOUTPRO4 with the RFID option must not be held closer than 20 cm from the rest of the body. This product must not be used in a holster or on a belt-clip.*



1. Product Description

Easily installable expansion modules for the WORKABOUT PRO4 allow you to customise this hand-held to meet your specific mobile computing requirements. This chapter outlines how to install the European UHF Linear RFID Module.

The RFID MODULE UHF LINEAR (WA9902) kit is based on the Sailfish UHF module from Zebra (Model: 21-121560). It is made of 4 parts:

- ASSY MODULE UHF WAP4 EUROPEAN
- ASSY ANTENNA LINEAR EUROPEAN WAP4
- INSTRUCTION SHEET WAP4 UHF LINEAR EUROPEAN
- LABELS CE WAP4 UHF LINEAR VARIANT

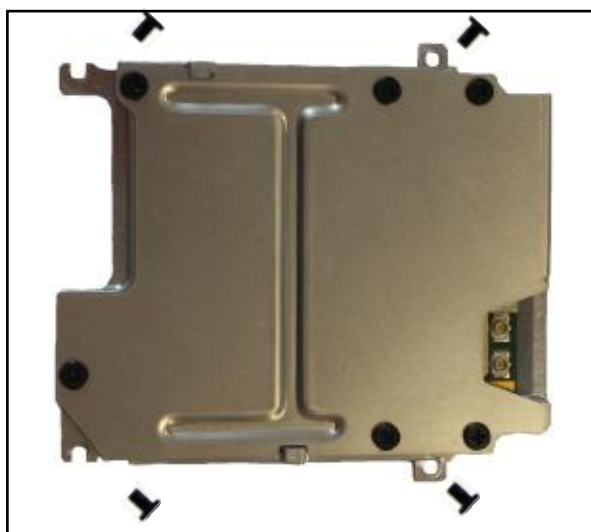


Figure 1-1 ASSY MODULE UHF WAP4 EUROPEAN



Figure 1-2 ASSY ANTENNA LINEAR EUROPEAN WAP4



Figure 1-3 INSTRUCTION SHEET WAP4 UHF LINEAR EUROPEAN

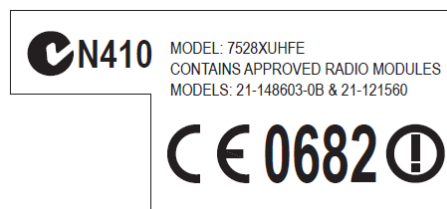
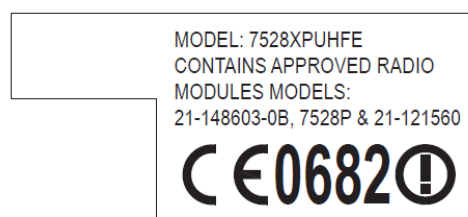


Figure 1-4 LABELS CE WAP4 UHF LINEAR VARIANT

2. Product Installation

Before installing a module in the WORKABOUT PRO4, all power sources must be turned off.

- Remove the battery. If your unit is using AC power, disconnect it.



Figure 2-1 *Battery location*

With the power shut down, you can now install the European RFID Module.

- Remove the existing endcap and pod or backplate



Figure 2-2 *WAP4 Disassembled*



Optional: If the RFID module is intend to be installed in 7528XPUHFE (WAP4 including WWAN) , stick the EMI gasket as shown on the picture below:



EMI Gasket

Aligning edge

- Slide the RFID Module inside the back opening



Figure 2-3 *RFID Module Assembly*

- Drive (2Kgf.cm / 1.7 lbs.In) the 4 screws that fix the RFID module on WAP4 frame

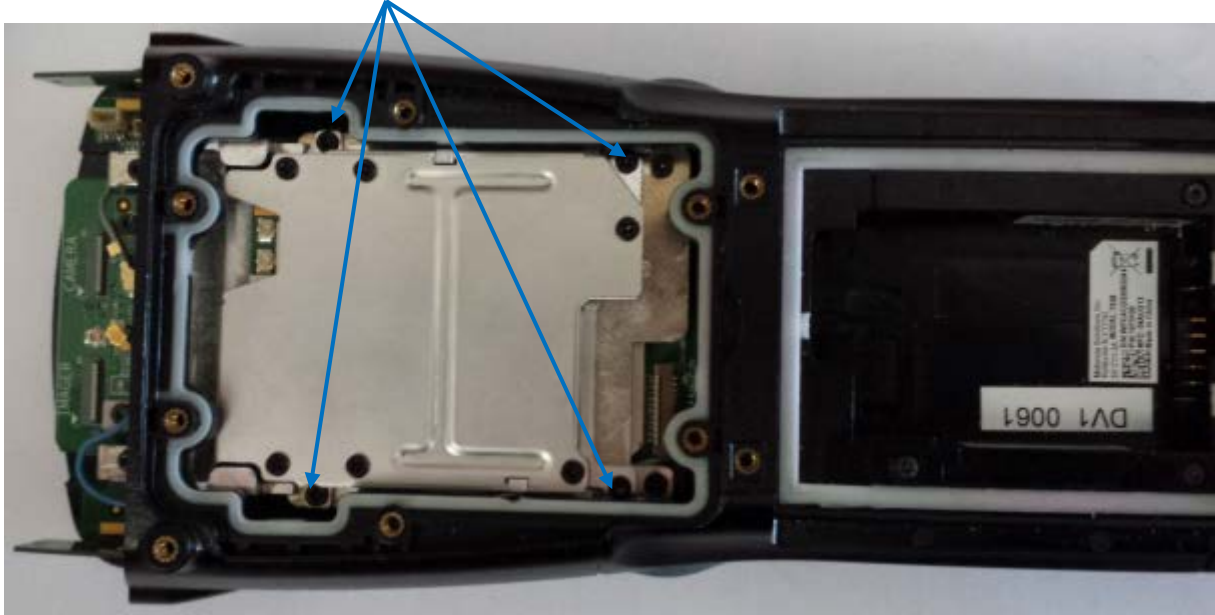


Figure 2-4 *RFID Module Assembly*

Place the antenna in the right slot:

- For WAP4 with WLAN only (7528XUHFE), antenna must be placed in the bottom slot



Figure 2-5 Antenna position for WLAN only WAP4 version

- For WAP4 with WWAN (7528XPUHFE), antenna must be placed in the middle slot



Figure 2-6 Antenna position for WWAN WAP4 version



Antenna should be correctly inserted in the rubber

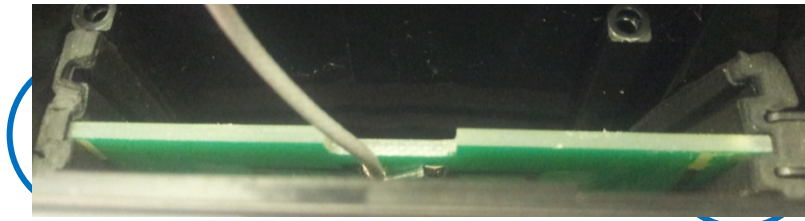


Figure 2-7 Right insertion (antenna is pushed totally in the rubber)

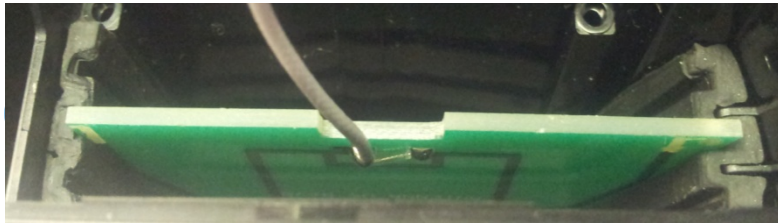


Figure 2-8 Wrong insertion (antenna comes out of the rubber)

- Drive (2Kgf.cm / 1.7 lbs-In) the 2 self-tapping screws to fix the antenna stopper



*

Figure 2-9 Antenna stopper assembly

- Plug the U.FL antenna connector to the Sailfish module.



Warning: Make sure you use the proper RF port (right side of the Sailfish)



Figure 2-10 Linear antenna assembly

- Reassemble the pod or backplate and the endcap (3 Kgf.cm / 2.6 lbs.In)



Figure 2-11 Final Assembly

- IF the model number of WorkAbout Pro4 is 7528XUHFE (WLAN only) put this label:

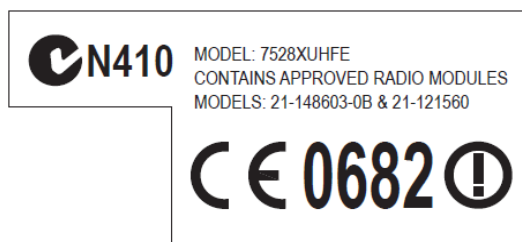


Figure 2-12 CE Label for WAP4 WLAN only variant

- IF the model number of WorkAbout Pro4 is 7528XPUHFE (WWAN version) put this label type:

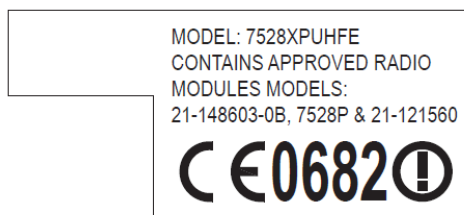


Figure 2-13 CE Label for WAP4 WWAN variant

Stick the label in the location following depending on WorkAbout Pro4 variant:



Figure 2-9 WorkAbout Pro4 Long Alphanumeric Keyboard



Figure 2-10 WorkAbout Pro4 Short Numeric Keyboard

3. Software installation:



To get current driver for WorkAbout Pro4, go to the website address below:

http://community.psion.com/downloads/developer_sdkhdk/m/rfid_sdk/

- Copy and install the latest CAB file named “WAP4_WM_RFID_UHF”.

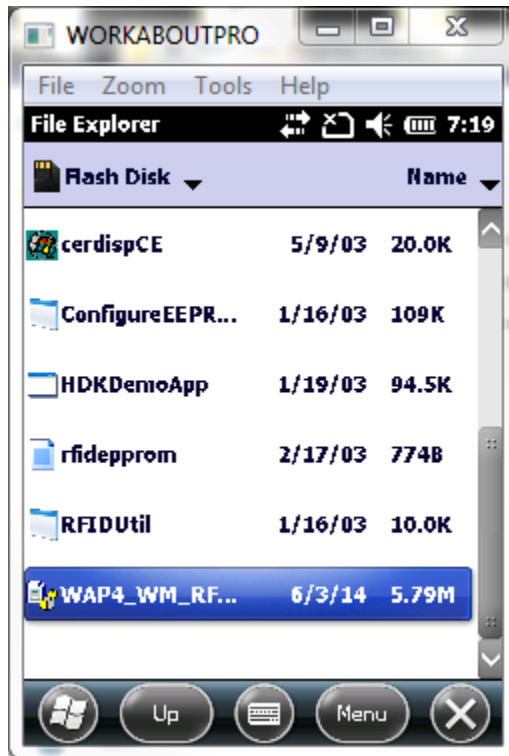


Figure 3-1 Driver CAB file

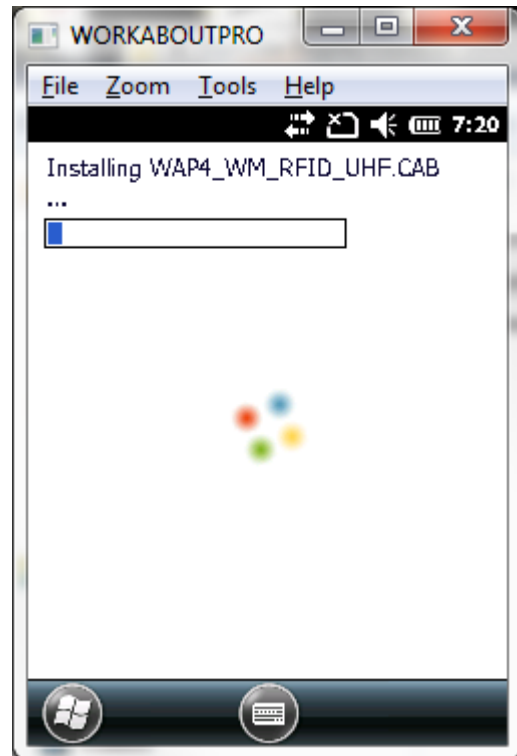


Figure 3-2 Driver installation

- After installation, select **RFID Demo** in the **Start** menu to start the RFID sample application.



Figure 3-3 RFID demo Icon



Figure 3-4 RFID Sample Application Window

- To read the TAG ID, press the **Start Reading** button. Put the TAG in front of the antenna. Tap Stop Reading to stop the inventory.



Figure 3-5 ID Tag Reading

For detailed instructions on how to use the RFID demo application, please visit <http://www.zebra.com> and download '[RFID Demo Applications User Guide \(P/N 72E-160038-01\)](#)'

4. Reading area:

This area depends on the TAG type, TAG packaging, Tag position and environment (metallic or not).

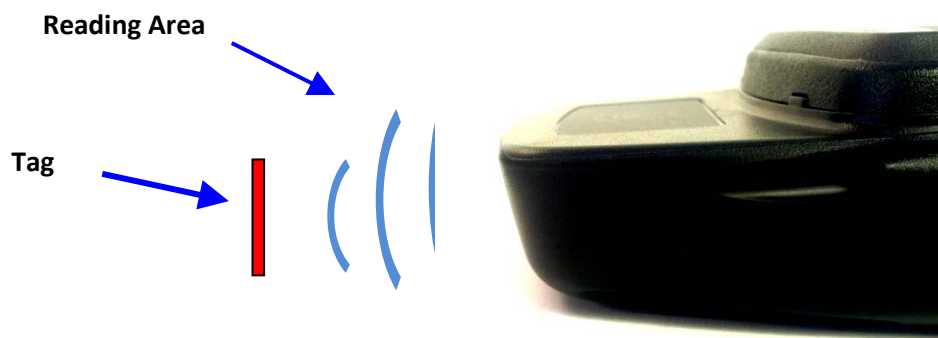


Figure 4-1 Reading area

RFID MODULE UHF LINEAR (CE) ENDCAP RFID Regulatory information
--

CE Marking:

Please CE marking and details of other country markings refer to the Declaration of Conformity (Doc) at <http://www.zebra.com>