

# WORKABOUT PRO GSM/GPRS RADIO MODULE RA3030-G2 INSTRUCTIONS

## I. Preparation



**Warning:** *The installation of this GSM/GPRS module must be performed using the appropriate anti-static devices. If unavailable, discharge static from your body by touching a grounded metallic object before opening any covers on the unit.*

The GSM/GPRS module consists of a GSM radio (SIM card sold separately) and an antenna. It requires an end-cap with a protrusion to accommodate the antenna. For detailed information on operation and specifications, please refer to the *WORKABOUT PRO Hand-Held Computer User Manual*. The GSM/GPRS module snaps onto the expansion connector on your WORKABOUT PRO. To install the module:



**Important:** *Back up any data in RAM first, since it will be erased when the unit is turned off.*

- If your unit is using AC power, disconnect it.
- Remove the stylus from the end-cap to use in removing the battery pack cover.
- Remove the WORKABOUT PRO's battery pack.
- Slide the hardware power switch as indicated in Figure 1 to switch off internal battery-backup power.

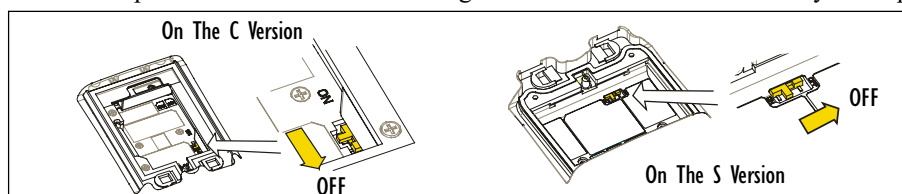


Figure 1 Switching Internal Battery-Backup Power Off

- Remove the end-cap at the top of the WORKABOUT PRO.
- Remove the back plate from the unit.

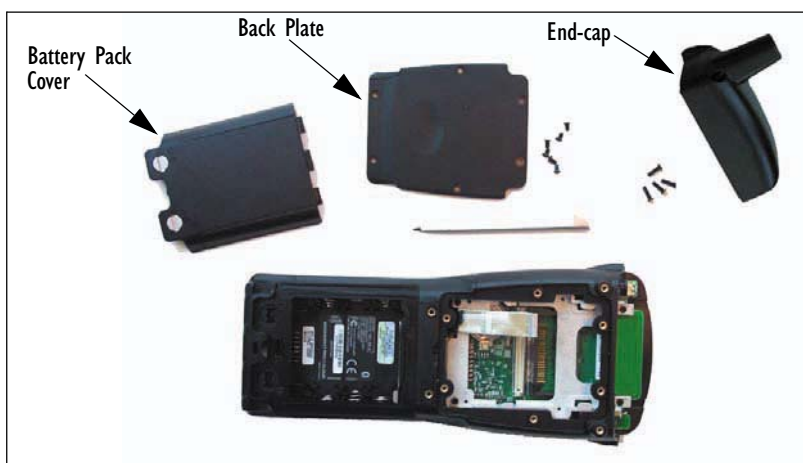
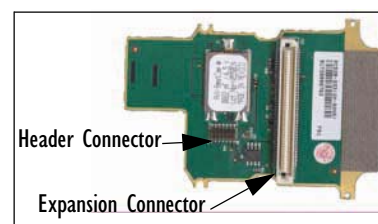


Figure 2 The Open WORKABOUT PRO

## 2. Installation

- Align the GSM/GPRS connector and the header pins on the expansion module with the expansion connector and the header connector on the WORKABOUT PRO. Apply slight pressure to snap the module into place on the hand-held.
- Settle the metal shield into place on top of the GSM/GPRS module. Ensure that the scanner flex cable lies on top of the plate.
- Use four of the screws provided to secure the expansion module and metal shield into place. Tighten the screws to a torque of 2 lb-in (2 kgf-cm), or until finger-tight.



March 19, 2007

8100130 Rev. A

Sheet 1 of 1



Figure 3 Installed Module And Shield

- Tuck the antenna coax through the frame.
- Remove the screw indicated in Figure 4 before inserting the antenna.

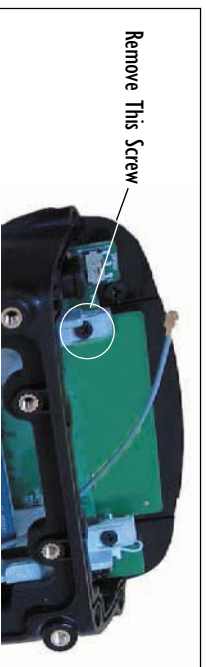


Figure 4 The Antenna Screw

- Slide the antenna into place. Use the single long screw provided to fasten the antenna to the frame.
- Snap the coax cable onto the antenna.

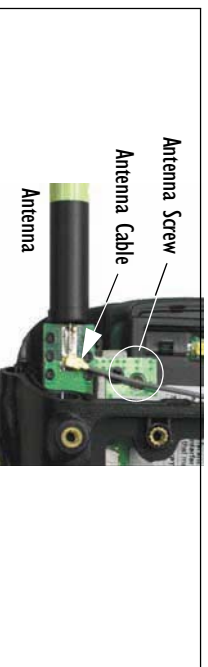


Figure 5 Installing The Antenna

- Attach the GSM end-cap.
- Tighten the end-cap screws to a torque of 3 lbs-in (3kgf-cm).
- Replace the back plate. Tighten the back-plate screws to a torque of 2 lbs-in (2 kgf-cm), or until finger-tight
- On the C version of the WORKABOUT PRO, open the card gate in the battery compartment.
- Slide the SIM card into the upper slot in the battery compartment. The card should be oriented with the contacts down and the notch to the front and left, according to the diagram in the battery compartment.
- Slide the hardware power switch to turn battery backup power back on.

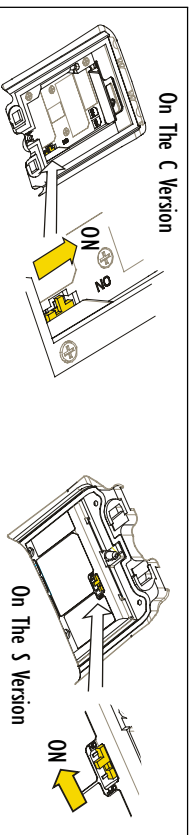


Figure 6 Switching Internal Battery-Backup Power On

- On the C version of the WORKABOUT PRO, close the card gate.
- Replace the battery and battery cover.
- Verify the installation by turning on the unit and checking that the signal strength icon is available in the taskbar, or that “Expansion Slot - Pison Teklogix GPRS” is listed under Properties, in the Control Panel\System Properties menu.

## COMPANY HEADQUARTERS AND CANADIAN SERVICE CENTRE

### Pison Teklogix Inc.

2100 Meadowdale Boulevard, Mississauga  
Ontario, Canada L5N 7J9  
Tel: +1 905 813 9900  
Fax: +1 905 812 6300  
E-mail: salescdn@pison.com