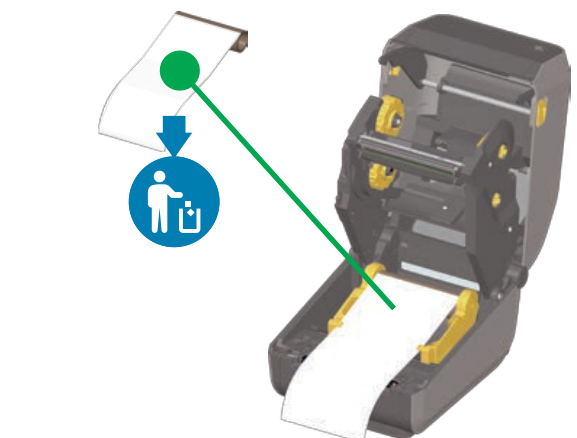
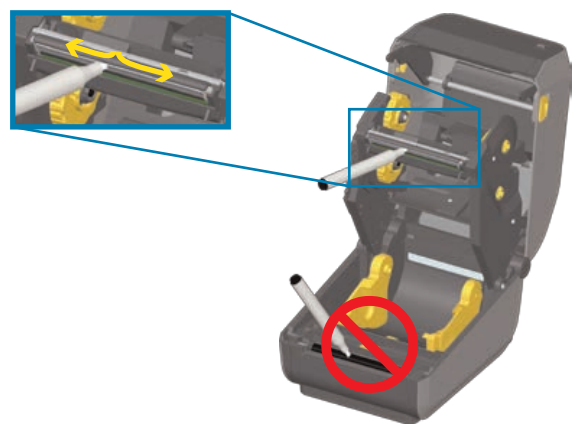
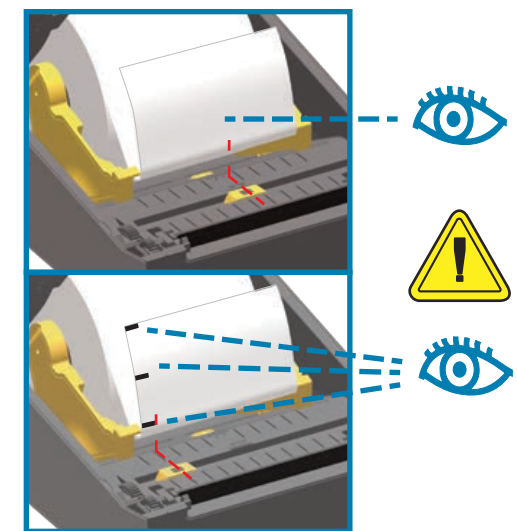
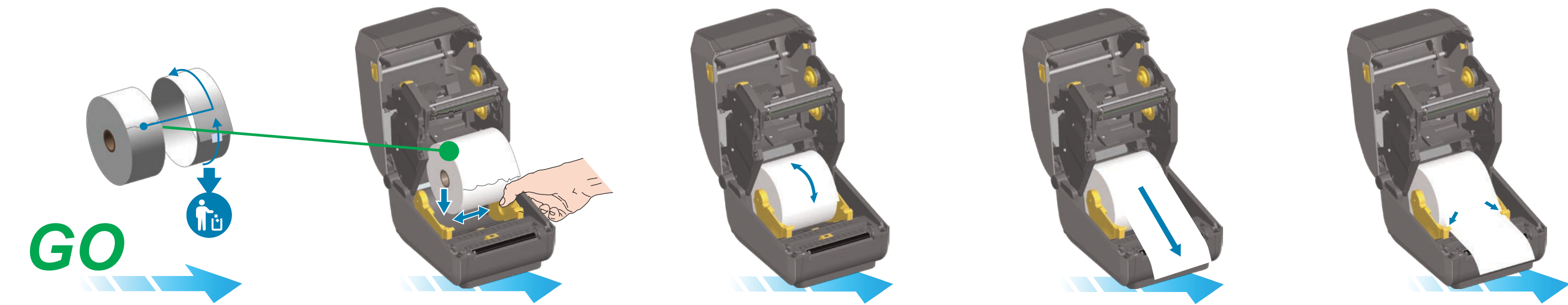


GO



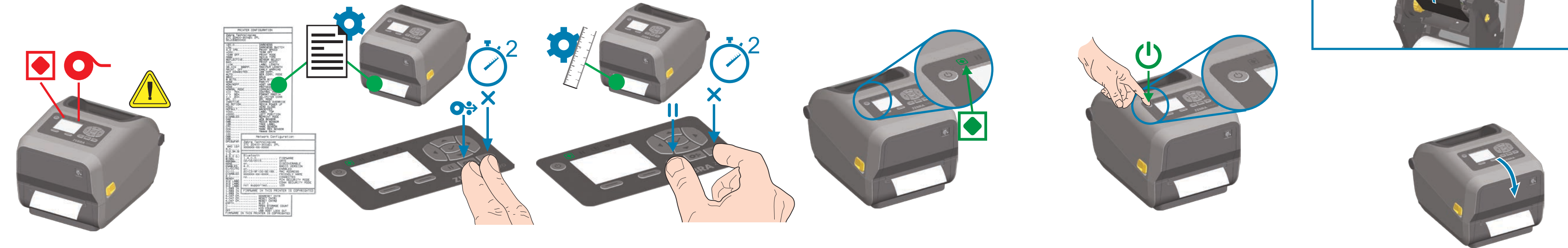
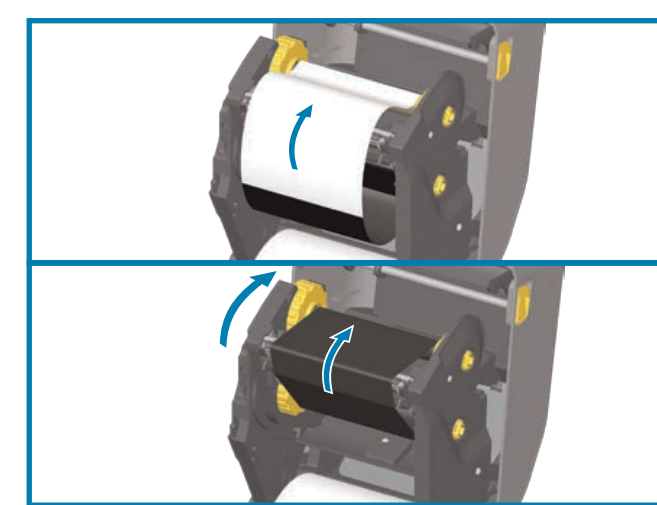
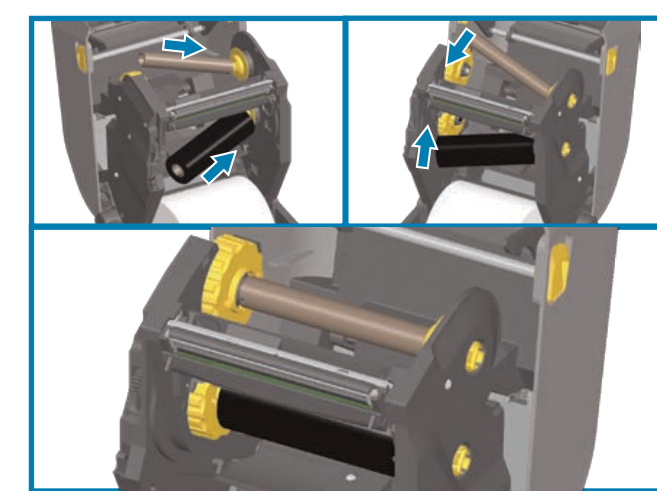
Indicators					
STATUS	PAUSE	DATA	SUPPLIES	NETWORK	
					Ready
					Paused
					Cover Open
					Media Out
					Ribbon Out
					Network Error
					Out of Memory
					Printhead Overtemp Error

Pause
 Feed
 Cancel

ZEBRA
<http://www.zebra.com/contact>
<https://www.zebra.com/supplies>

Configuration Report
 Smart Calibration

www.zebra.com/zd620t-info



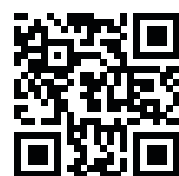


3 Learn About Genuine Zebra Supplies
<http://www.zebra.com/supplies>

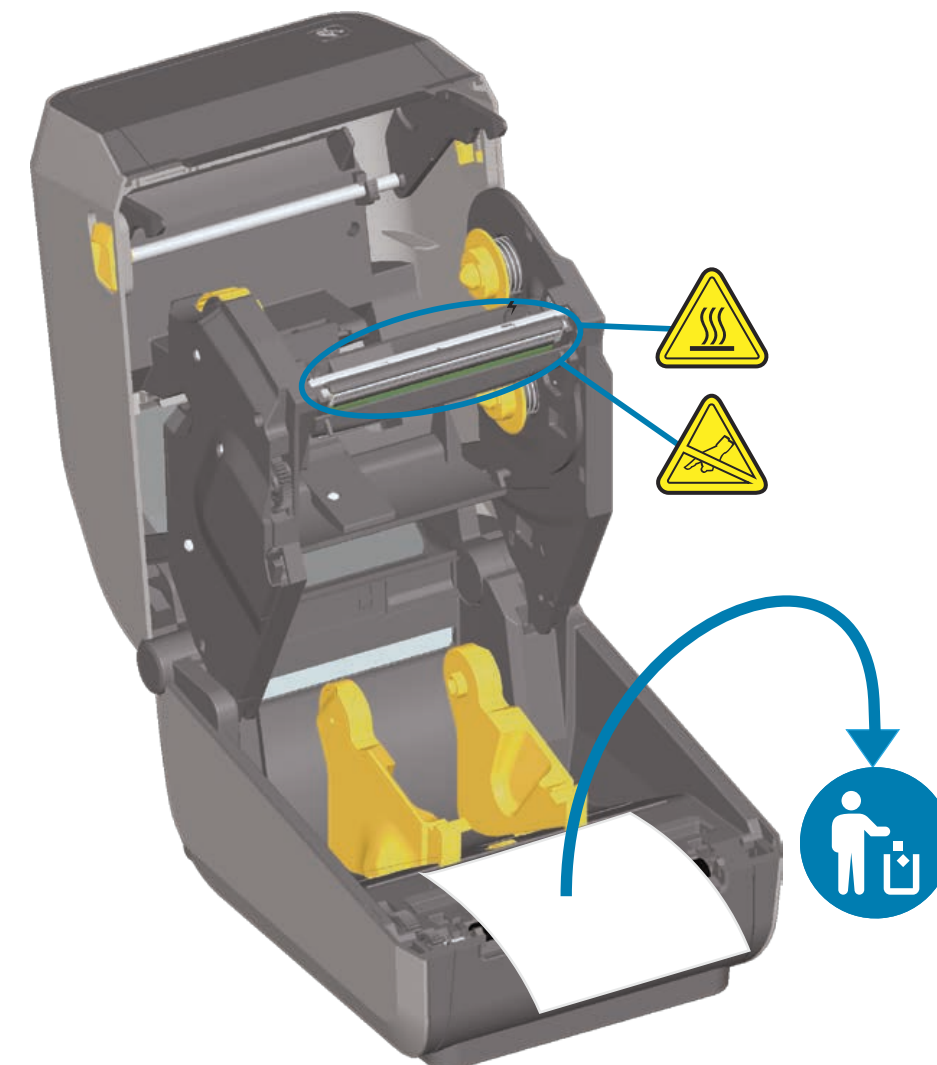
2 Set Up Your Printer
<http://www.zebra.com/zd620t-info>

1 Install Latest Zebra Setup Utilities
<http://www.zebra.com/setup>

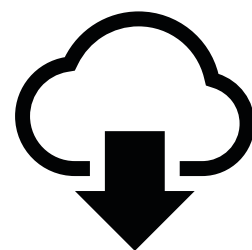
ZD620



www.zebra.com/zd620t-info

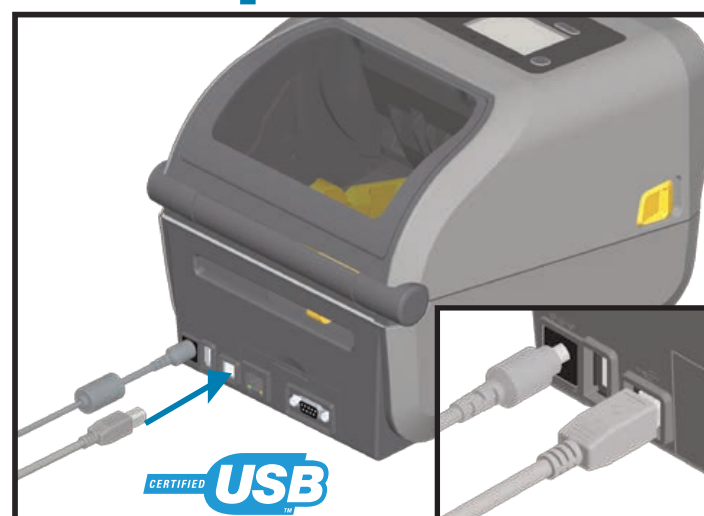


1 www.zebra.com/setup

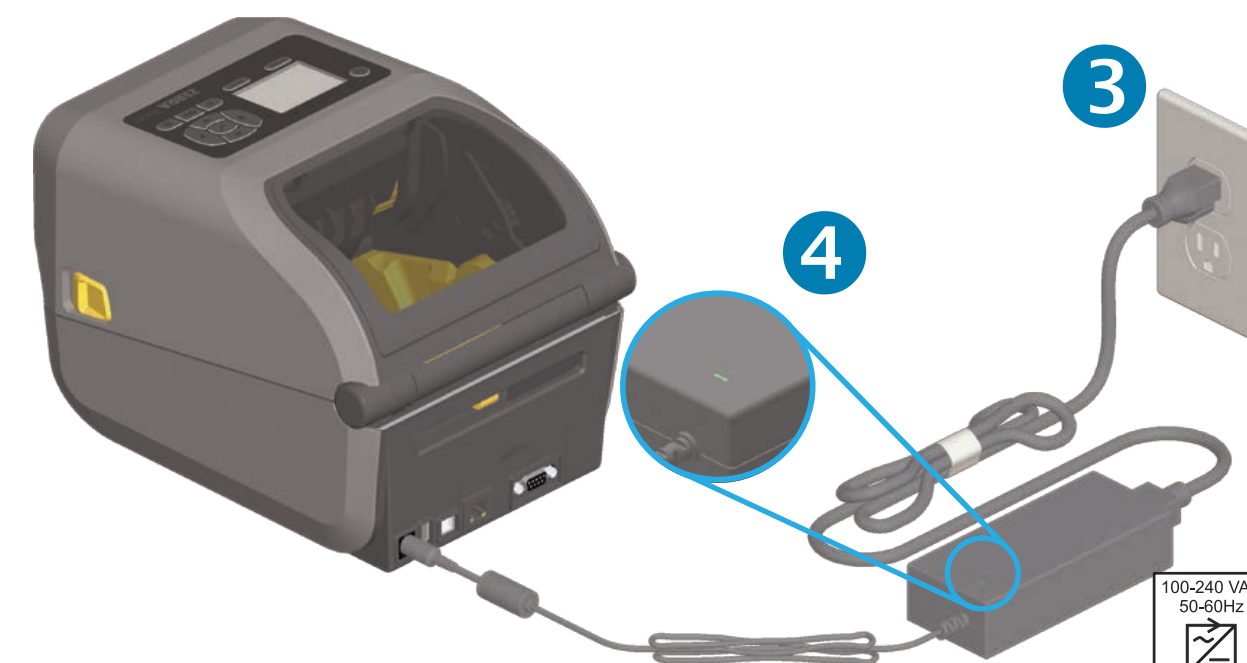
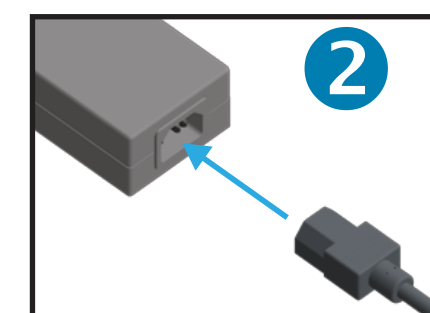


Download and Install Zebra Setup Utilities
Includes Windows Printer Driver Files

2 USB



Connect a USB cable to the printer



100-240 VAC
50-60Hz
24 VDC



Corporate Headquarters
+1 800 423 0442
inquiry4@zebra.com

Asia-Pacific Headquarters
+65 6858 0722
contact.apac@zebra.com

EMEA Headquarters
zebra.com/locations
mseurope@zebra.com

Latin America Headquarters
+1 847 955 2283
la.contactme@zebra.com

<http://www.zebra.com/locations>

©2017 ZIH Corp. and/or its affiliates. All rights reserved. Zebra and the stylized Zebra head are trademarks of ZIH Corp., registered in many jurisdictions worldwide. All other trademarks are the property of their respective owners.

Printed In China



212697-001