

ZT510

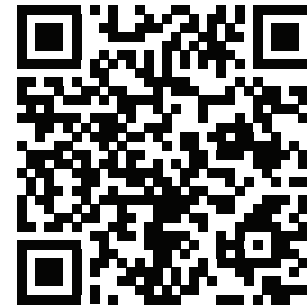
Quick Start Guide



1 Getting Started

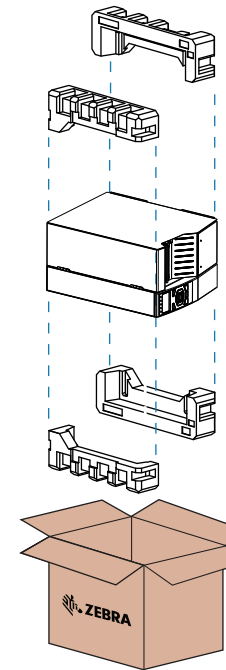
IMPORTANT

Go to zebra.com/zt510-info and install the driver for your printer.

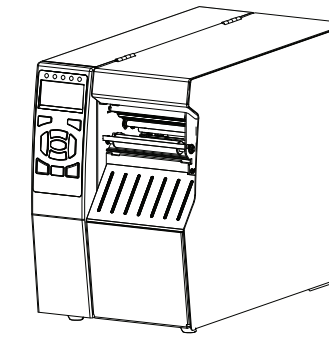


The driver **MUST** be installed before connecting the printer to the computer, or it will cause complications. If your Microsoft Windows-based computer does not have the driver installed for this printer, download it from zebra.com/zt510-info and install it before continuing.

2 Remove the Printer from the Box



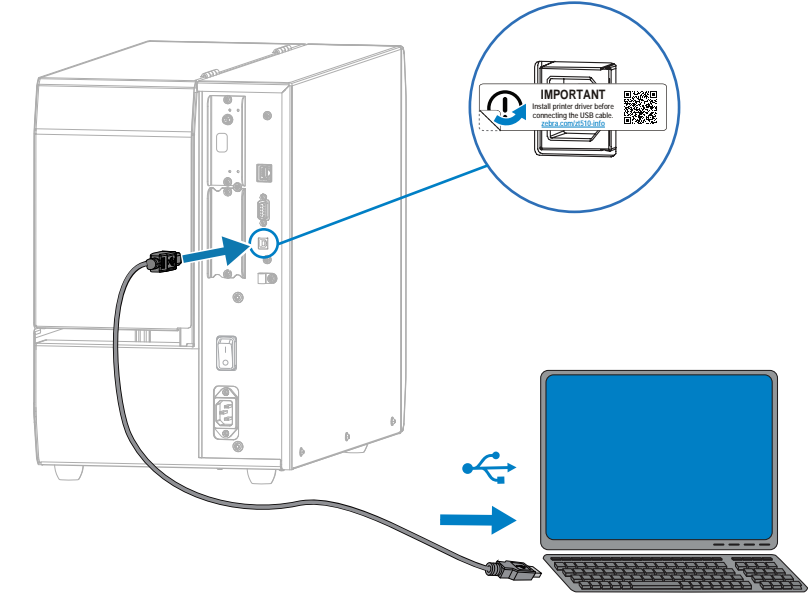
Verify that you have the items shown.



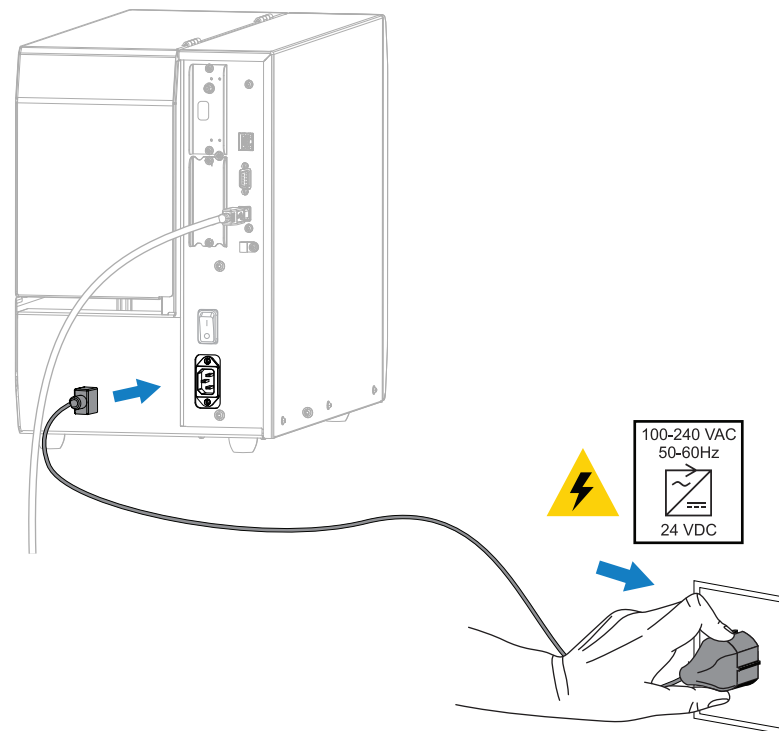
22.7–29.4 kg/50–65 lb

Save the box and packaging materials in case you need to store or ship your printer in the future.

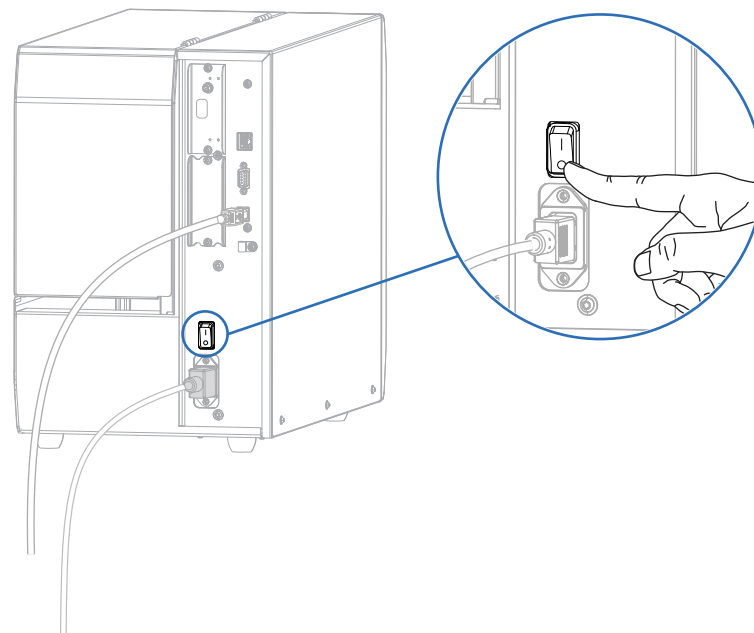
3 Connect the USB Cable



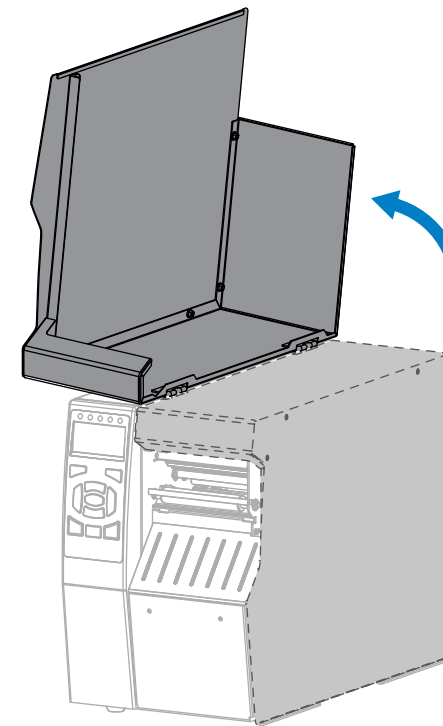
4 Plug the Printer into an Electrical Outlet



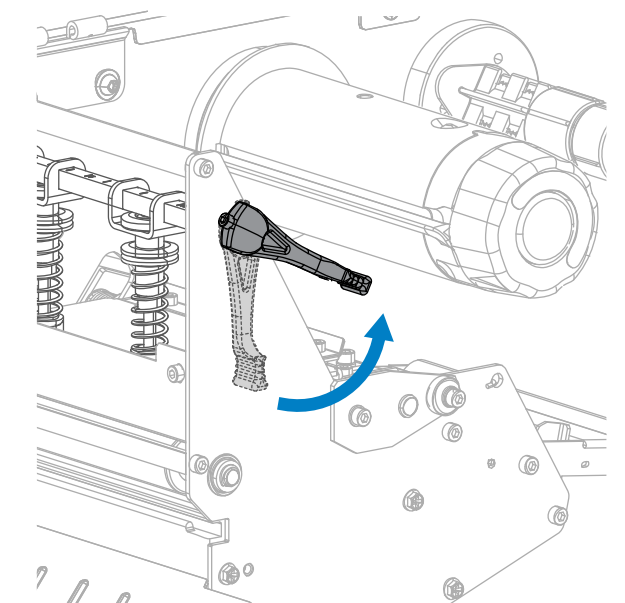
5 Turn on the Printer Power



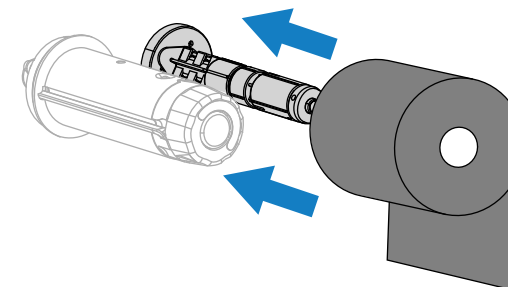
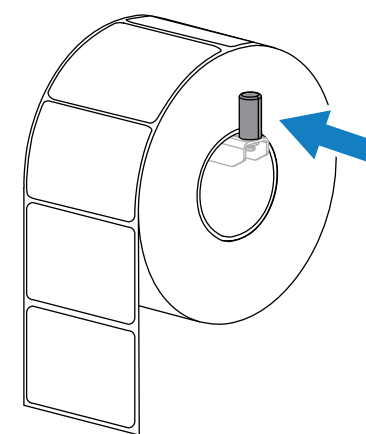
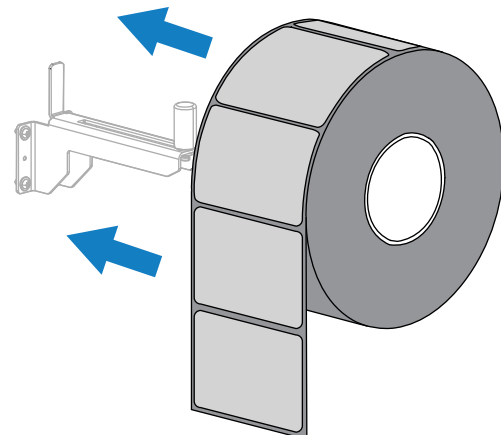
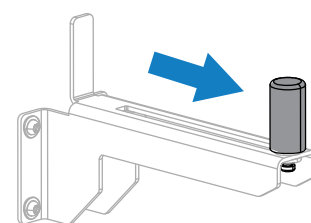
6 Open the Media Cover



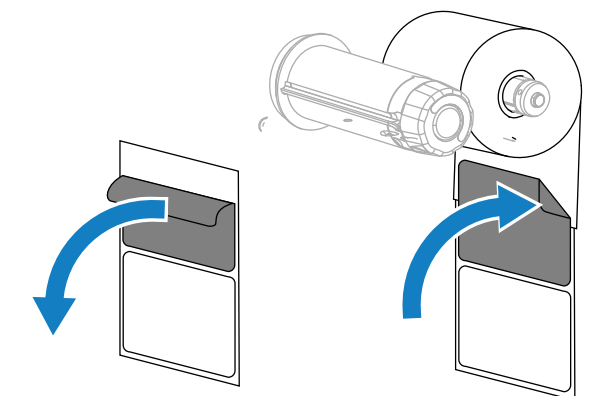
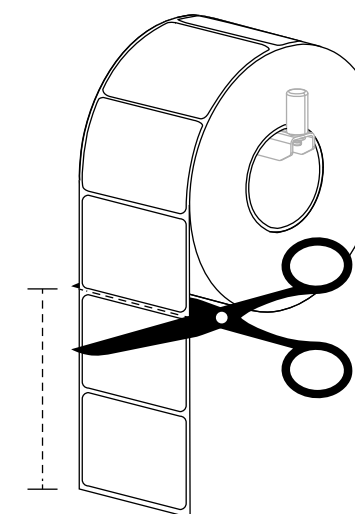
7 Release the Printhead Assembly



8 Load Media



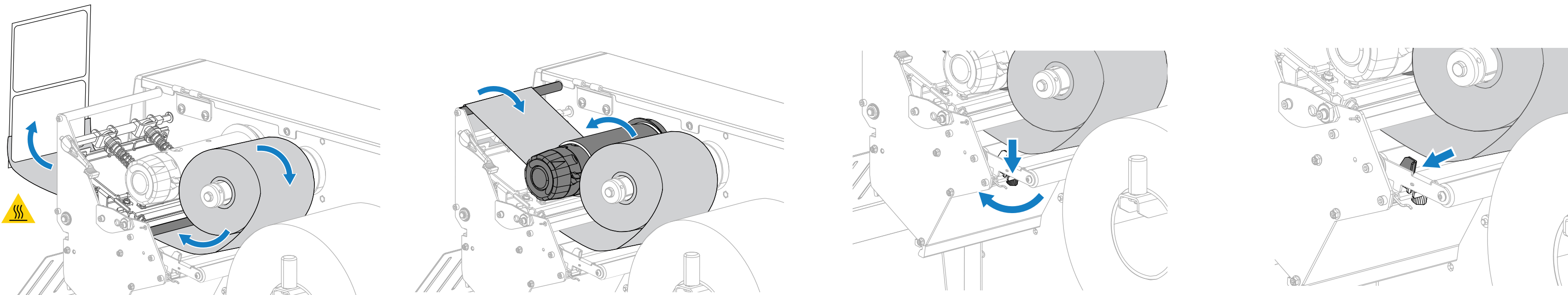
100 - 150 mm
4 - 6 in.



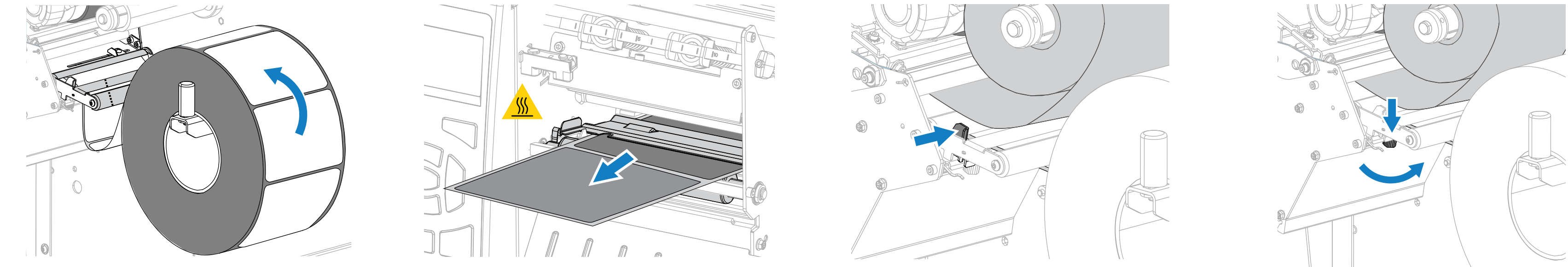
Watch the video



zebra.com/zt510-info



10 Load Ribbon (continued)



i Support and Information



P1133730-01WW



Zebra Technologies | 3 Overlook Point | Lincolnshire, IL 60069 USA
zebra.com
ZEBRA and the stylized Zebra head are trademarks of Zebra Technologies Corp., registered in many jurisdictions worldwide.
All other trademarks are the property of their respective owners.
© 2023 Zebra Technologies Corp. and/or its affiliates. All rights reserved.



View user documentation and how-to videos.
zebra.com/z1510-info

View Quick Answers and Knowledge Base.
zebra.com/knowledge



Need to design a label?
zebra.com/zebradesigner

Join Community Connection of Zebra users and ambassadors.
zebra.com/supportcommunity



Learn about genuine Zebra supplies.
zebra.com/supplies

Contact Zebra about your printer.
zebra.com/contactsupport



Need to manage your printer?
zebra.com/profilemanager

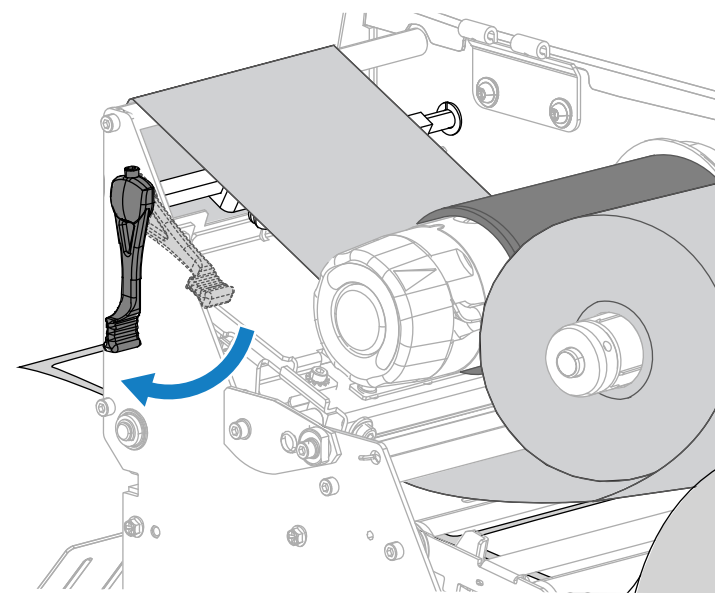
Need to secure your printer?
zebra.com/printsecure



Learn about product patent information.
ip.zebra.com



11 Load Ribbon (continued)



12 Prepare for Printing

