



EM 220

Mobile Printer Windows Driver Manual

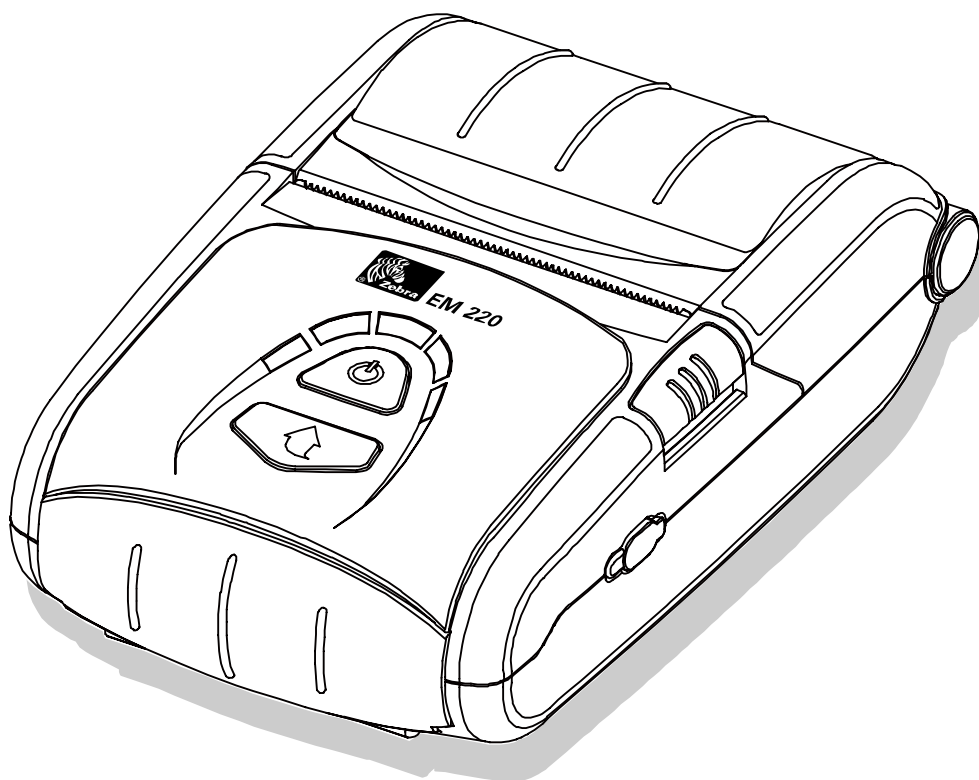


Table of Contents

1. Manual Information.....	6
2. Operating System (OS) Environment	6
3. Windows Driver Preparation.....	6
4. Windows Driver Installation.....	7
4-1 Installing on Windows 98/ME.....	7
4-1-1 Via Serial Port	7
4-1-2 Via USB Port	10
4-2 Installing on Windows 2000	16
4-2-1 Via Serial Port or Bluetooth.....	16
4-2-2 Via USB Port	20
4-3 Installing on Windows XP/2003 Server.....	23
4-3-1 Via Serial Port or Bluetooth.....	23
4-3-2 Via USB Port	27
4-4 Installing on Windows VISTA.....	33
4-4-1 Via Serial Port or Bluetooth.....	33
4-4-2 Via USB Port	37
5. Detailed Windows Driver Settings	40
5-1 Paper Supply Method	40
5-2 Paper Size	42
5-3 Additional Commands.....	43
6. Windows Driver Specifications	45
6-1 Fonts	45
6-2 Special Functions.....	46
6-3 Barcodes.....	47
6-4 Two-Dimensional Barcodes	47
7. Use of Windows Driver.....	48
7-1 Use of Visual Basic	48
7-1-1 Windows Driver Selection	48
7-1-2 Test Printing	49
7-1-3 Barcode Printing	49
7-1-4 Two-Dimensional Barcode Printing.....	49
7-2 Use of Wordpad	50
7-2-1 Wordpad Environment Settings	50
7-2-2 Text Printing	50
7-2-3 Barcode Printing	51
7-2-4 Two-Dimensional Barcode Printing.....	52

■ Proprietary Statements

This manual contains proprietary information of Zebra Technologies Corporation. It is intended solely for the information and use of parties operating and maintaining the equipment described herein. Such proprietary information may not be used, reproduced, or disclosed to any other parties for any other purpose without the expressed written permission of Zebra Technologies Corporation.

Product Improvements

Since continuous product improvement is a policy of Zebra Technologies Corporation, all specifications and signs are subject to change without notice.

FCC Compliance Statement

NOTE: This equipment has been tested and found to comply with the limits of a Class B digital device, pursuant to Part 15 of the FCC Rules. These limits are designed to provide reasonable protection against harmful interference in a residential installation. This equipment generates, uses and can radiate radio frequency energy and, if not installed and used in accordance with the instructions, may cause harmful interference to radio communications. However, there is no guarantee that interference will not occur in a particular installation. If this equipment does cause harmful interference to radio or television reception, which can be determined by turning the equipment off and on, the user is encouraged to try to correct the interference by one or more of the following measures:

- Reorient or relocate the receiving antenna.
- Increase the separation between the equipment and receiver.
- Connect the equipment into an outlet or circuit different from that to which the receiver is connected.
- Consult the dealer or an experienced radio/TV technician for help.

WARNING: Exposure to Radio Frequency radiation. To conform to FCC RF exposure requirements this device shall be used in accordance with the operating conditions and instructions listed in this manual.

NOTE: This unit was tested with shielded cables on the peripheral devices. Shielded cables must be used with the unit to insure compliance.

Changes or modifications to this unit not expressly approved by Zebra Technologies Corporation could void the user's authority to operate this equipment.

Canadian Compliance Statement

This Class B digital apparatus complies with Canadian ICES-003.

Cet appareil numérique de la classe B est conforme à la norme NMB-003 du Canada.

“IC:” before the equipment certification number signifies that the Industry Canada technical specifications were met. It does not guarantee that the certified product will operate to the user’s satisfaction.

Liability Disclaimer

Inasmuch as every effort has been made to supply accurate information in this manual, Zebra Technologies Corporation is not liable for any erroneous information or omissions. Zebra Technologies Corporation reserves the right to correct any such errors and disclaims liability resulting therefrom.

No Liability for Consequential Damage

In no event shall Zebra Technologies Corporation or anyone else involved in the creation, production, or delivery of the accompanying product (including hardware and software) be liable for any damages whatsoever (including, without limitation, damages for loss of business profits, business interruption, loss of business information, or other pecuniary loss) arising out of the use of or the results of use of or inability to use such product, even if Zebra Technologies Corporation has been advised of the possibility of such damages. Because some states do not allow the exclusion of liability for consequential or incidental damages, the above limitation may not apply to you.

Copyrights

The copyrights in this manual and the label print engine described therein are owned by Zebra Technologies Corporation. Unauthorized reproduction of this manual or the software in the label print engine may result in imprisonment of up to one year and fines of up to \$10,000 (17 U.S.C.506). Copyright violators may be subject to civil liability.

This product may contain ZPL®, ZPL II®, and ZebraLink™ programs; Element Energy Equalizer® Circuit; E3®; and AGFA fonts. Software © ZIH Corp. All rights reserved worldwide.

ZebraLink and all product names and numbers are trademarks, and Zebra, the Zebra logo, ZPL, ZPL II, Element Energy Equalizer Circuit, and E3 Circuit are registered trademarks of ZIH Corp. All rights reserved worldwide.

Monotype®, Intellifont® and UFST® are trademarks of Monotype Imaging, Inc. registered in the United States Patent and Trademark Office and may be registered in certain jurisdictions.

Andy™, CG Palacio™, CG Century Schoolbook™, CG Triumvirate™, CG Times™, Monotype Kai™, Monotype Mincho™ and Monotype Sung™ are trademarks of Monotype Imaging, Inc. and may be registered in some jurisdictions.

HY Gothic Hangul™ is a trademark of Hanyang Systems, Inc.

Angsana™ is a trademark of Unity Progress Company (UPC) Limited.

Andale®, Arial®, Book Antiqua®, Corsiva®, Gill Sans®, Sorts® and Times New Roman® are trademarks of The Monotype Corporation registered in the United States Patent and Trademark Office and may be registered in certain jurisdictions.

Century Gothic™, Bookman Old Style™ and Century Schoolbook™ are trademarks of The Monotype Corporation and may be registered in certain jurisdictions.

HGP Gothic B is a trademark of the Ricoh company, Ltd. and may be registered in some jurisdictions.

Univers™ is a trademark of Heidelberger Druckmaschinen AG, which may be registered in certain jurisdictions, exclusively licensed through Linotype Library GmbH, a wholly owned subsidiary of Heidelberger Druckmaschinen AG.

Futura® is a trademark of Bauer Types SA registered in the United States Patent and Trademark Office and may be registered in some jurisdictions.

TrueType® is a trademark of Apple Computer, Inc. registered in the United States Patent and Trademark Office and may be registered in certain jurisdictions.

All other product names are the property of their respective owners.

All other brand names, product names, or trademarks belong to their respective holders.

©2006 ZIH Corp.

1. Manual Information

This Windows Driver Installation Manual provides information on installation, detailed specifications, and usage of the printer's Windows Driver according to PC operating system (OS).

2. Operating System (OS) Environment

The following operating systems are supported for usage:

- Microsoft Windows 98 Gold
- Microsoft Windows 98 Second Edition
- Microsoft Windows Millennium Edition
- Microsoft Windows 2000
- Microsoft Windows XP
- Microsoft Windows 2003 Server
- Microsoft Windows Embedded For Point Of Service
- Microsoft Windows VISTA 32-bit

3. Windows Driver Preparation

The Windows Driver is included in the enclosed CD, and can also be downloaded from the Zebra website.

(<http://www.zebra.com/>)

If downloading from the Zebra website, first download the EM 220_Vx.x.xx.zip file, then unzip the file, and run the EM 220_Vx.x.xx.exe file.

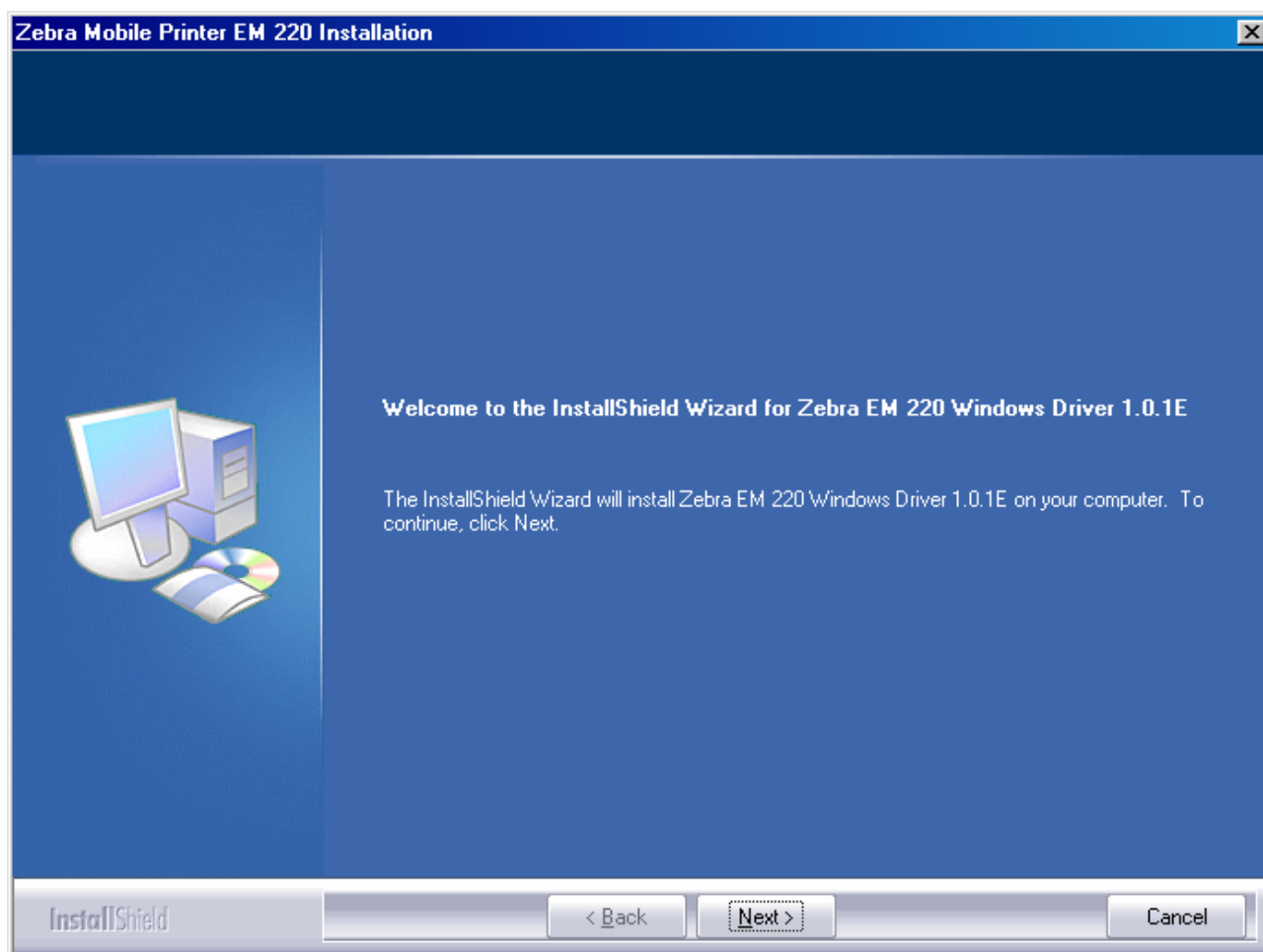
If using the enclosed CD, click the "Windows Driver" button to find and run the Windows Driver installation file (EM 220_Vx.x.xx.exe).

4. Windows Driver Installation

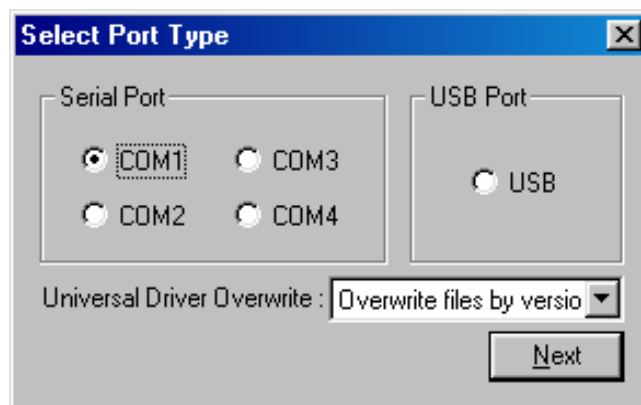
4-1 Installing on Windows 98/ME

4-1-1 Via Serial Port

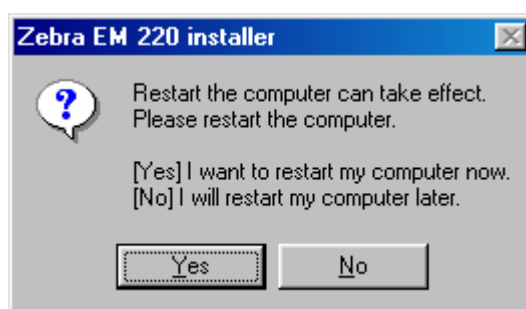
- 1) Double-click the Windows Driver installation file (EM 220_Vx.x.xx.exe).
- 2) Click the “Next” button.



3) Select the COM port to be used and click the “Next” button.



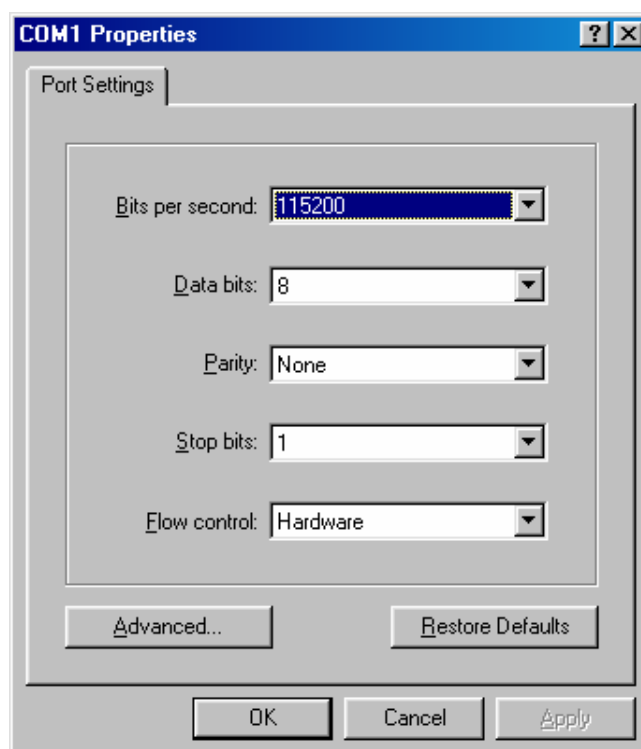
4) Clicking the “Yes” button will reboot the PC.



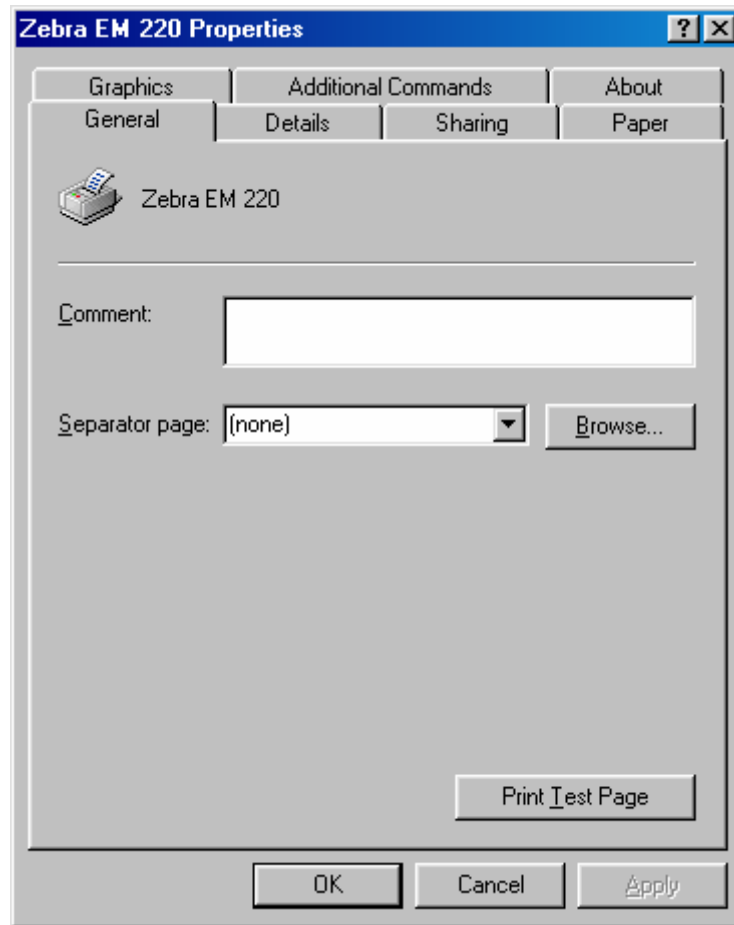
5) Open the printer properties window in the Windows OS.

6) Click the “Port Settings...” button in the “Details” tab.

7) Match the communication settings to those of the printer.
(The communication settings of the printer can be performed by conducting a self-test.)



8) Click the “Print Test Page” button and check printing status.

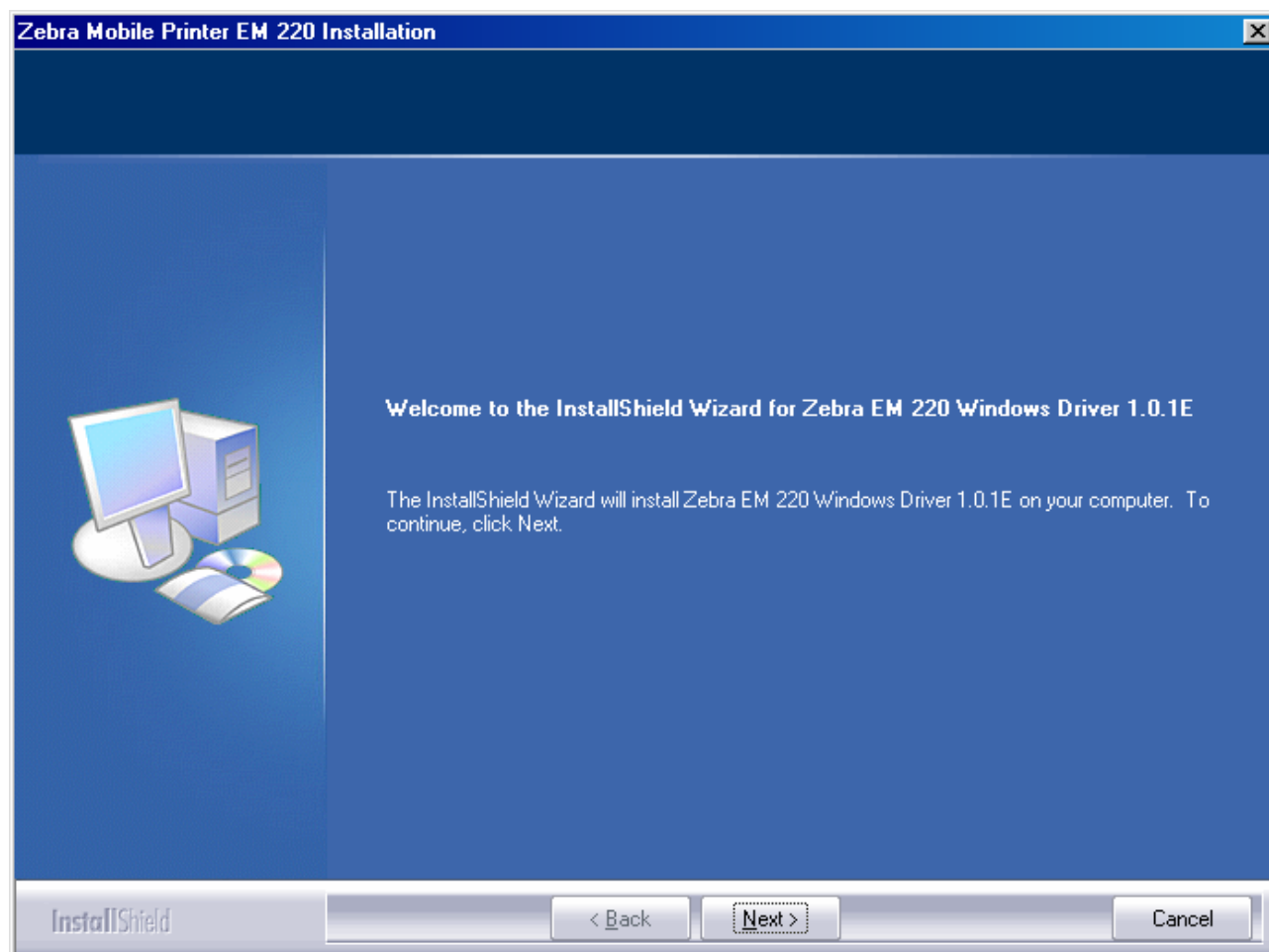


9) Proper installation of the driver is indicated if the test page is printed normally.

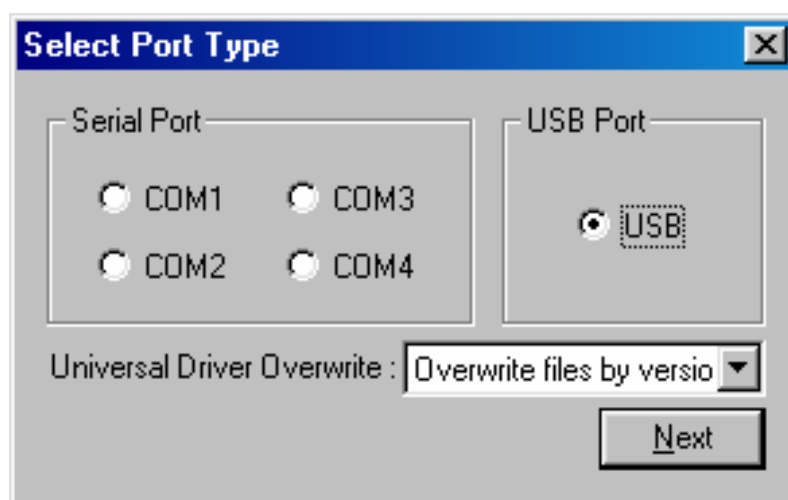
4-1-2 Via USB Port

1) Double-click the Windows Driver installation file (EM 220_Vx.x.xx.exe).

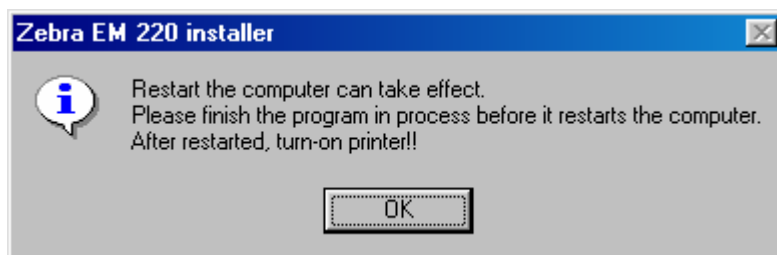
2) Click the “Next” button.



3) Select USB and click the “Next” button.



4) Clicking the “OK” button will reboot the PC.

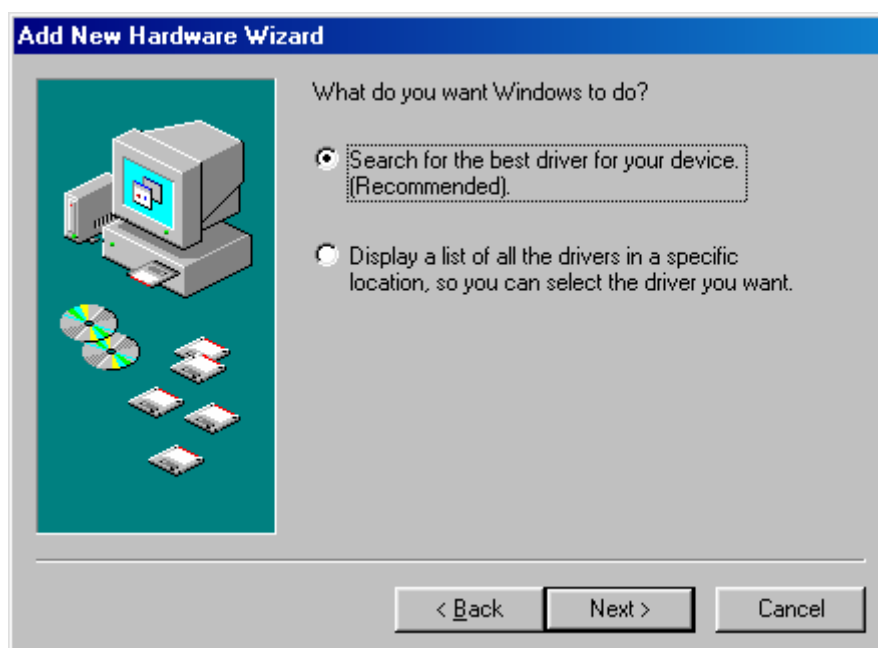


5) Turn on the printer.

6) When the New Hardware Wizard appears for the installation of the “USB Printing Support” Driver, click the “Next” button.



7) Continue to click the “Next” button.



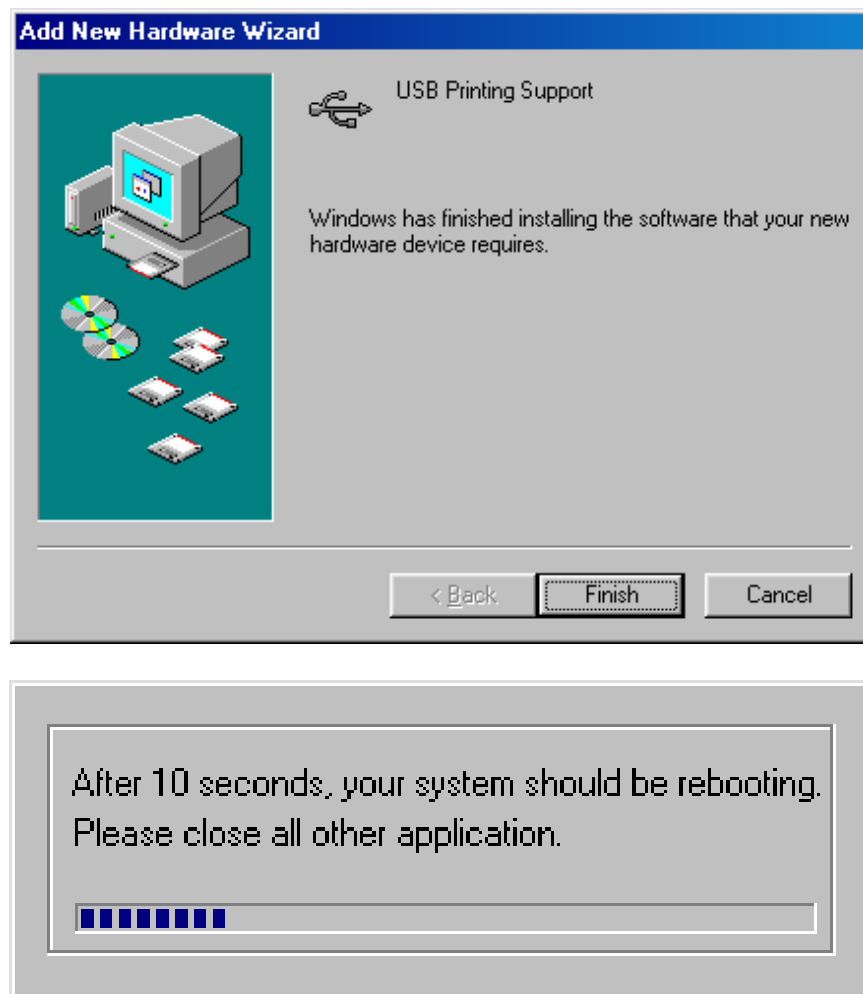
8) Continue to click the “Next” button.



9) Continue to click the “Next” button.



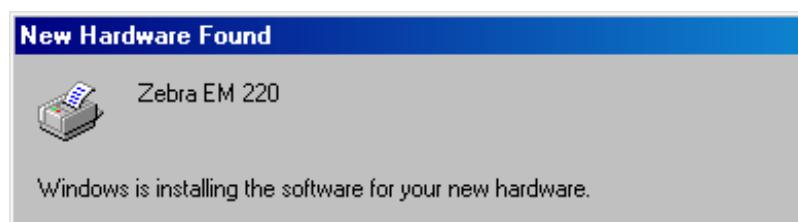
- 10) When the “USB Printing Support” Driver installation is complete, the system automatically reboots.



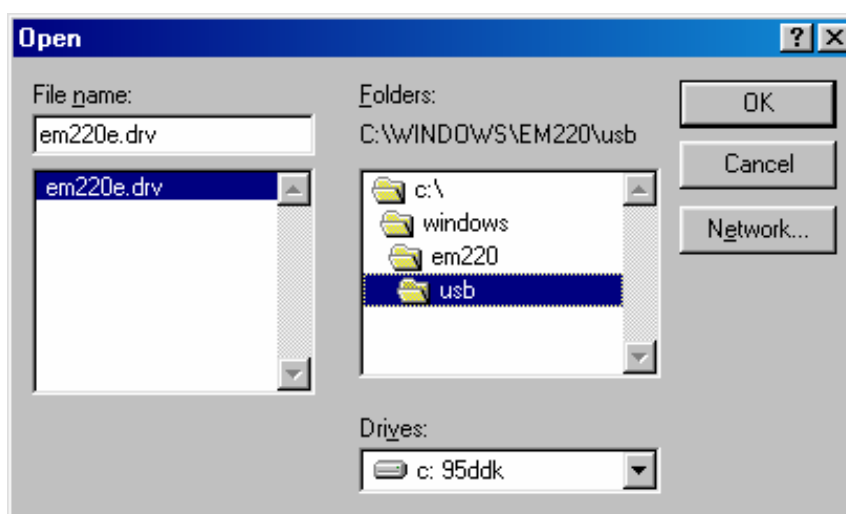
After 10 seconds, your system should be rebooting.
Please close all other application.



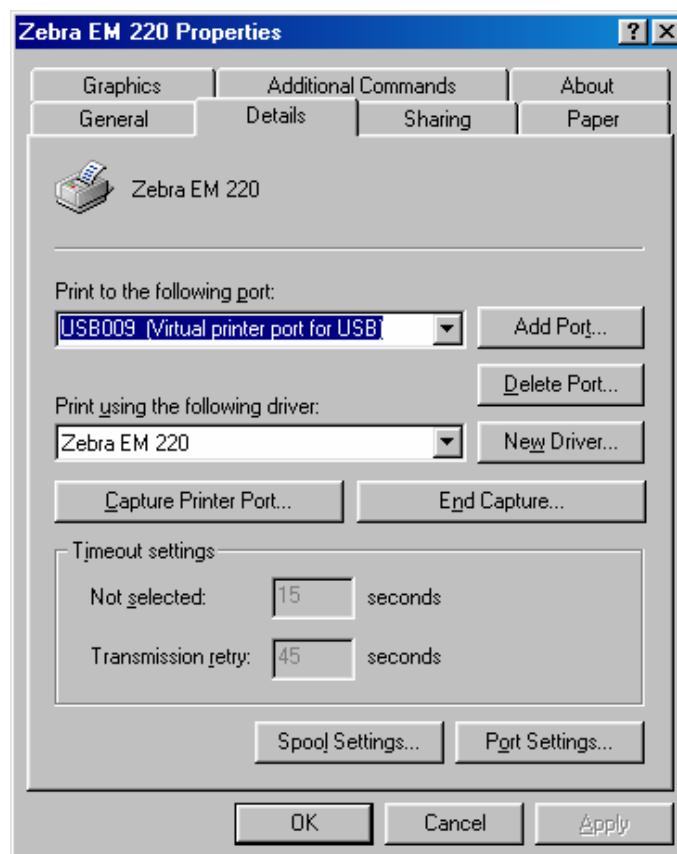
- 11) After system rebooting, the Windows Driver is automatically installed.



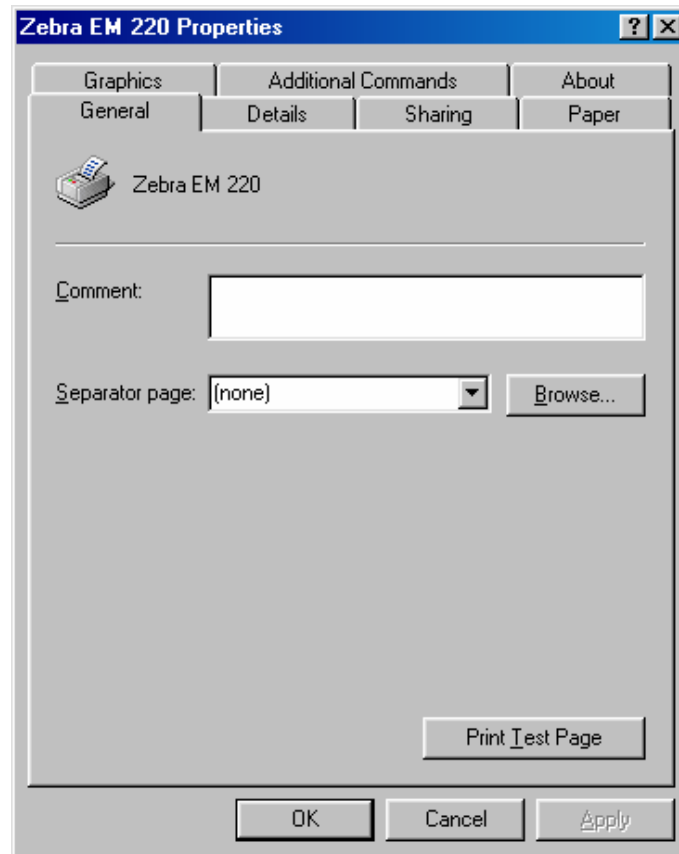
- * If an error occurs during software installation, save the location.
(Location: "C:\WINDOWS\EM220\usb")



- 12) Confirm the USB Port setting in the Windows Driver properties.



13) Click the “Print Test Page” button and check printing status.

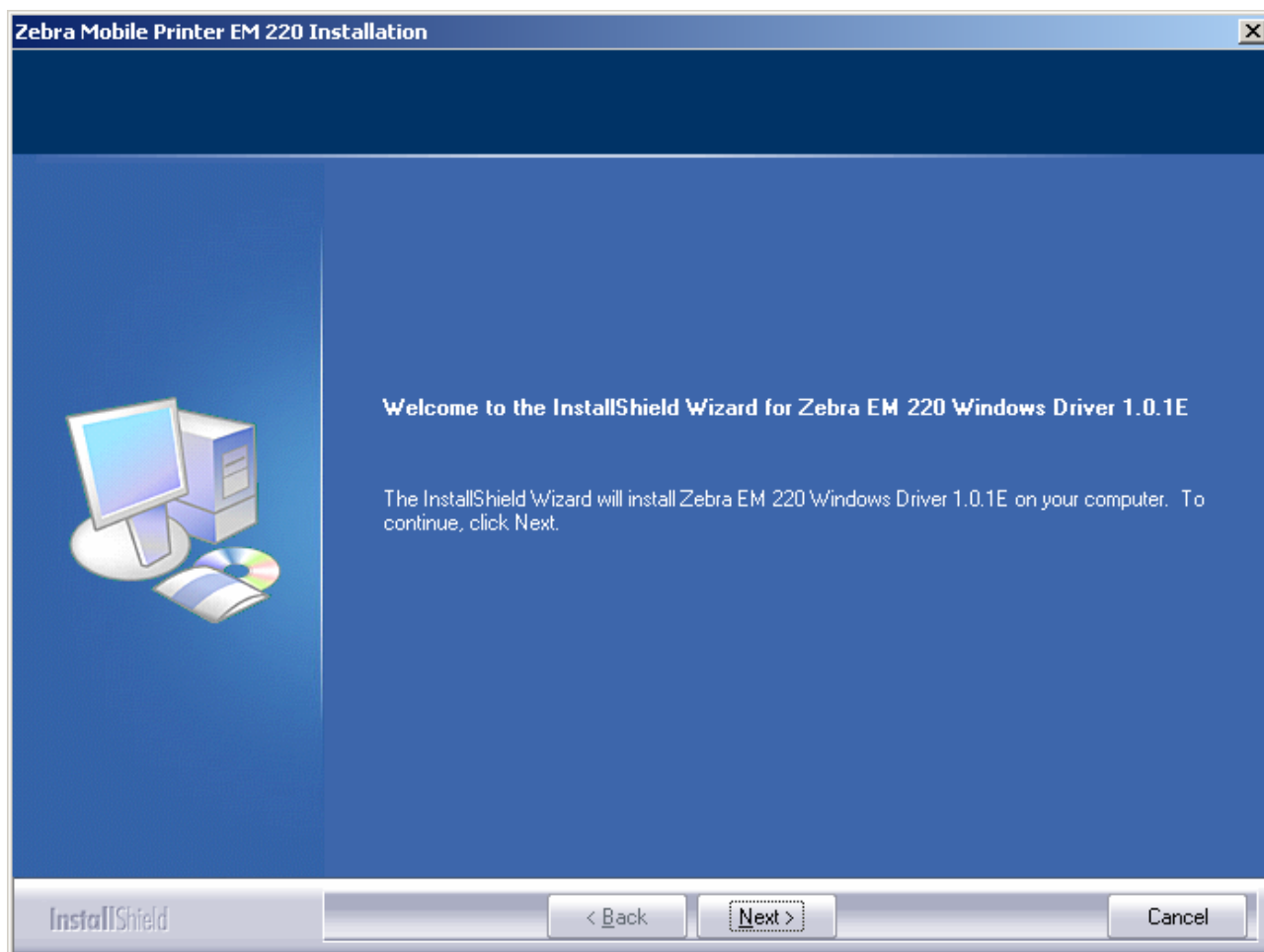


14) Proper installation of the driver is indicated if the test page is printed normally.

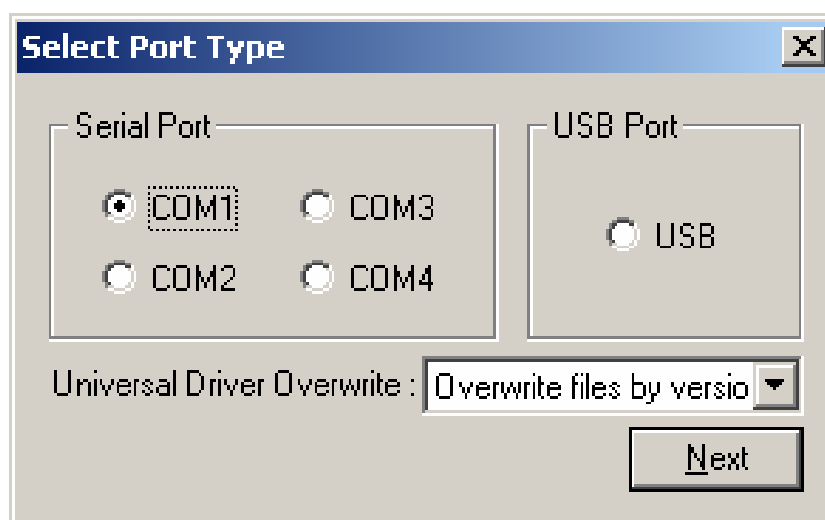
4-2 Installing on Windows 2000

4-2-1 Via Serial Port or Bluetooth

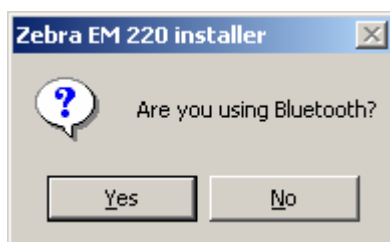
- 1) Double-click the Windows Driver installation file (EM 220_Vx.x.xx.exe).
- 2) Click the “Next” button.



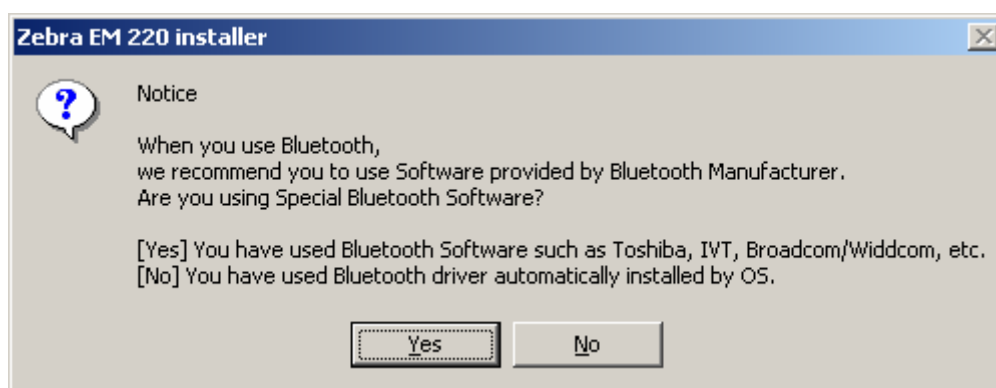
- 3) Select the COM port to be used and click the “Next” button.



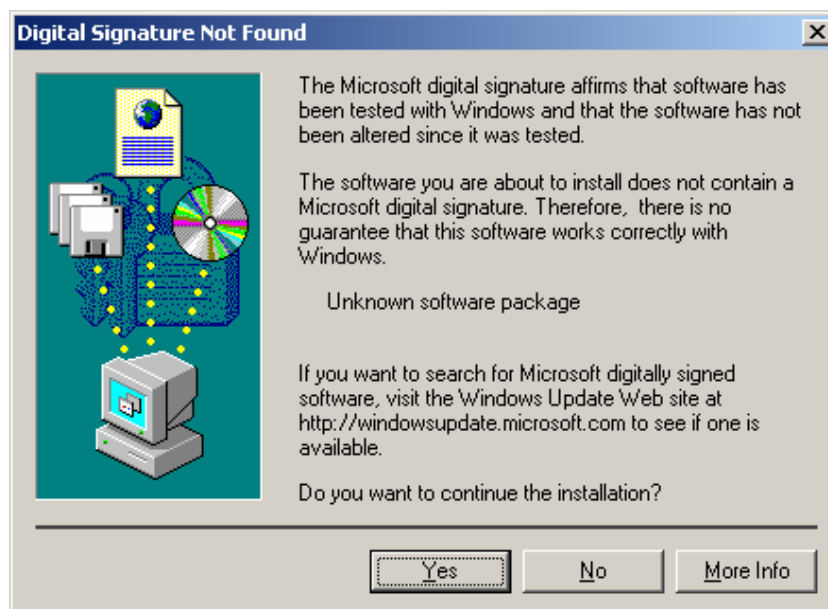
- 4) If using Bluetooth, click the “Yes” button.
- Click “No” if using a Serial port.
 - To use Bluetooth, first install the corresponding product software.
(Refer to the user manual of the corresponding product.)



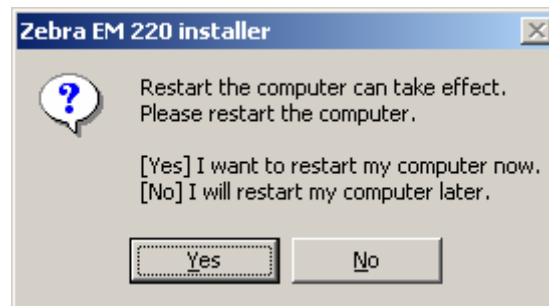
- * Select the Bluetooth Driver to be used.
- “Yes”: to use an IVT, Broadcom Driver
- “No”: to use a driver supplied by the Windows OS



- 5) When the following message box appears, click the “Yes” button.



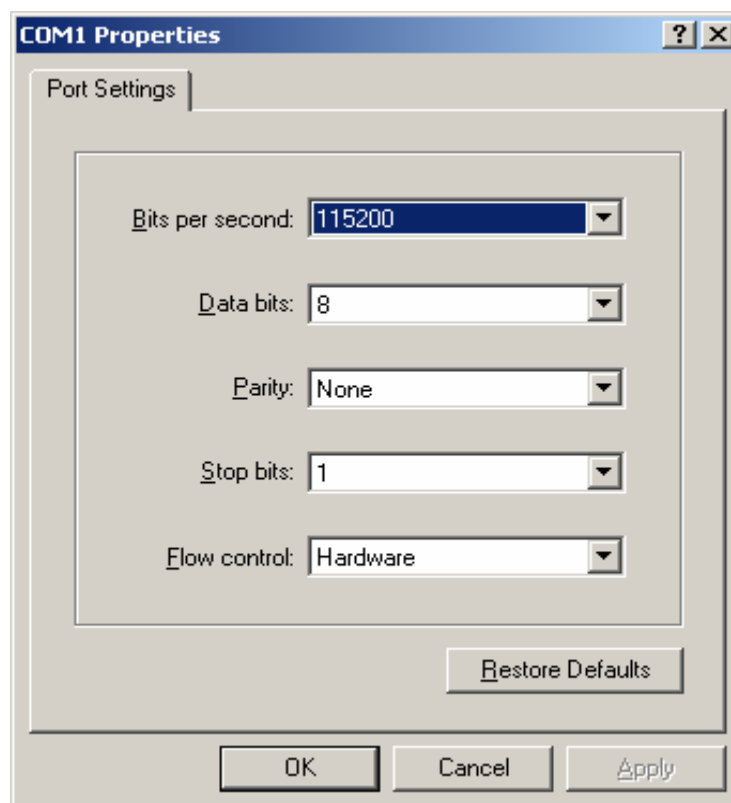
6) Clicking the “Yes” button will reboot the PC.



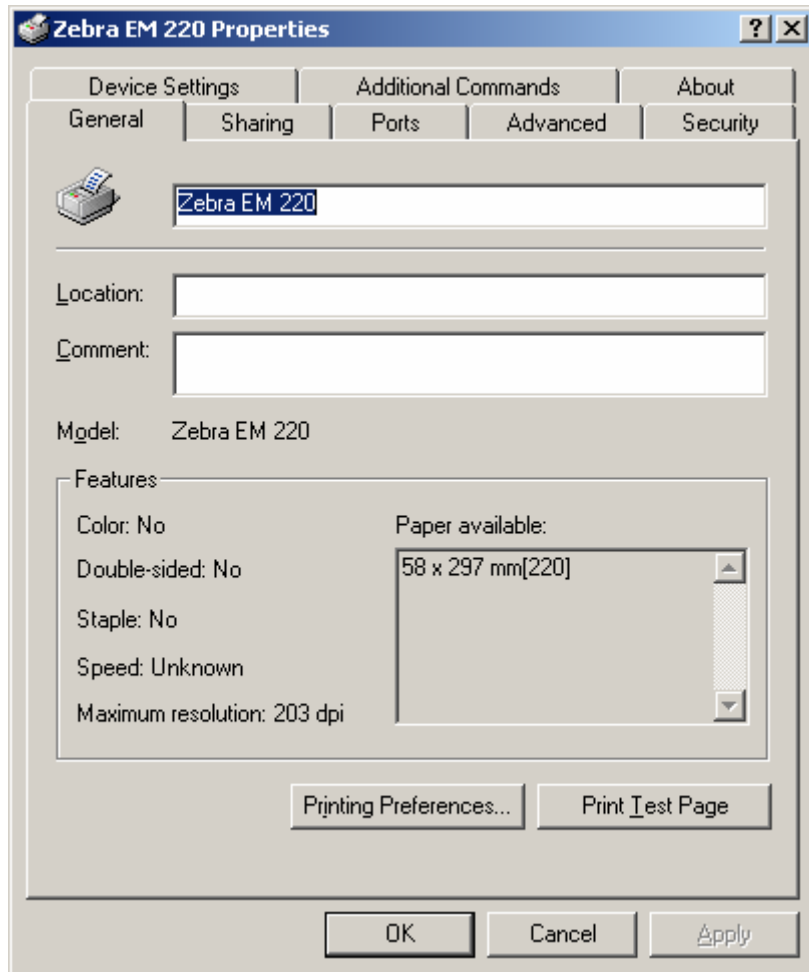
7) Open the printer properties window in the Windows OS.

8) Click the “Port Settings” button in the “Ports” tab.

9) Match the communication settings to those of the printer.
(The communication settings of the printer can be performed by conducting a self-test.)



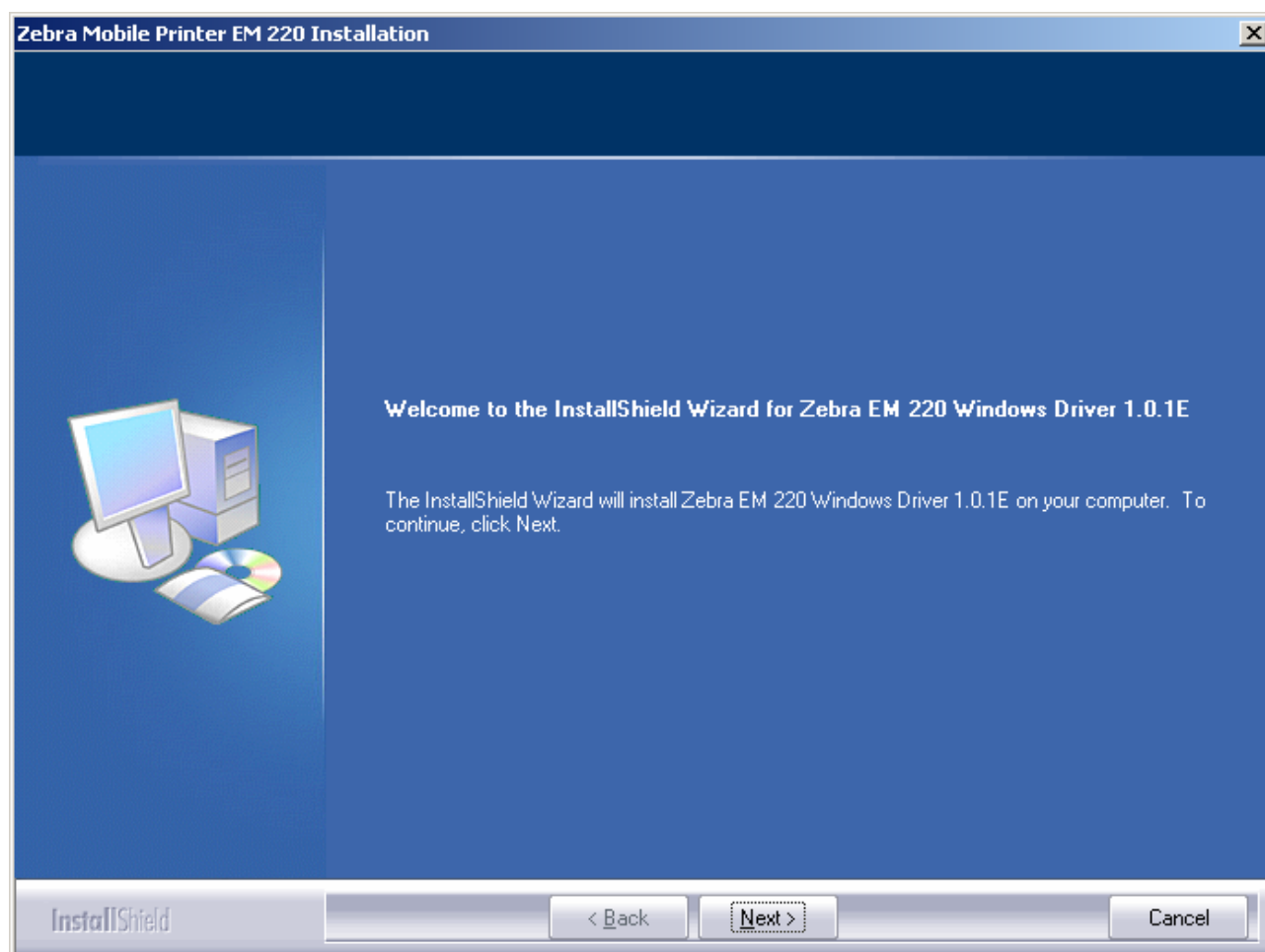
10) Click the “Print Test Page” button and check printing status.



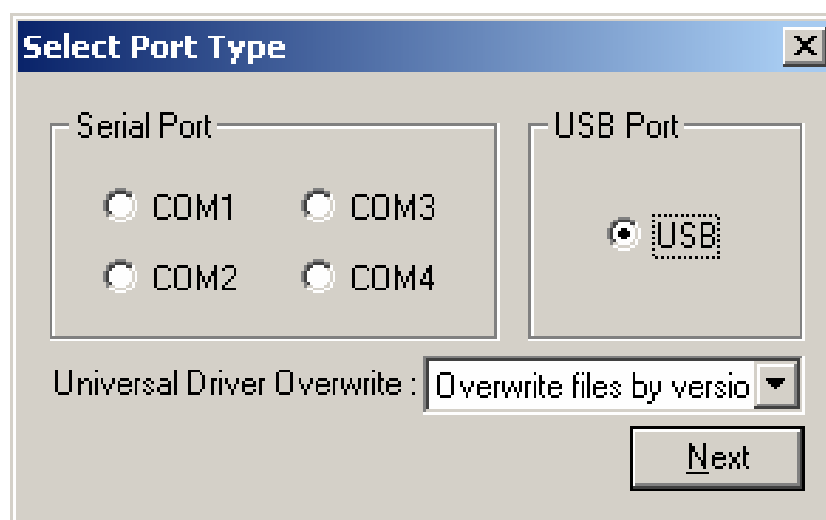
11) Proper installation of the driver is indicated if the test page is printed normally.

4-2-2 Via USB Port

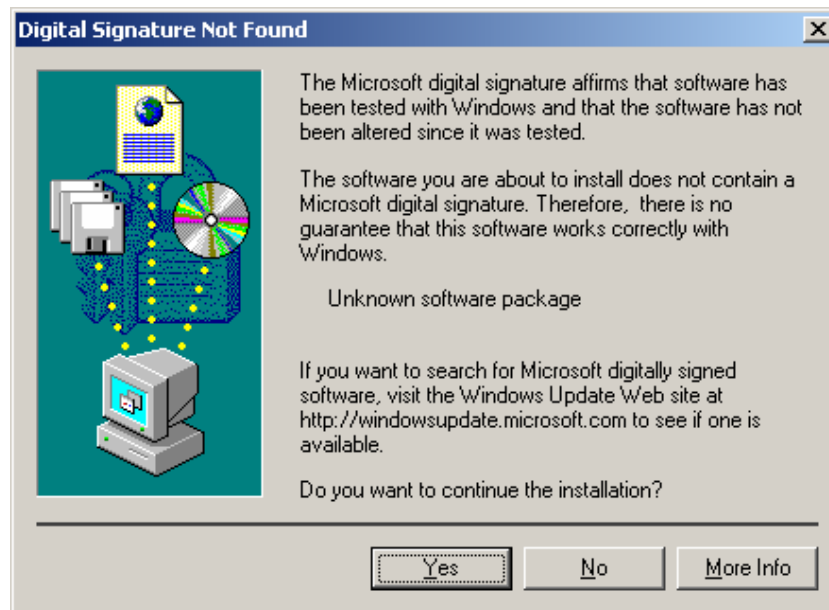
- 1) Double-click the Windows Driver installation file (EM 220_Vx.x.xx.exe).
- 2) Click the “Next” button.



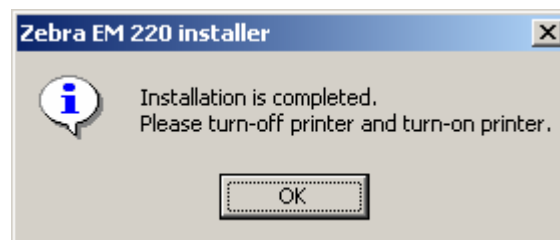
- 3) Select USB and click the “Next” button.



4) When the following message box appears, click the “Yes” button.

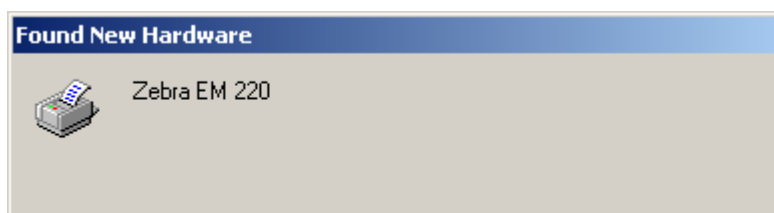


5) Click the “OK” button.

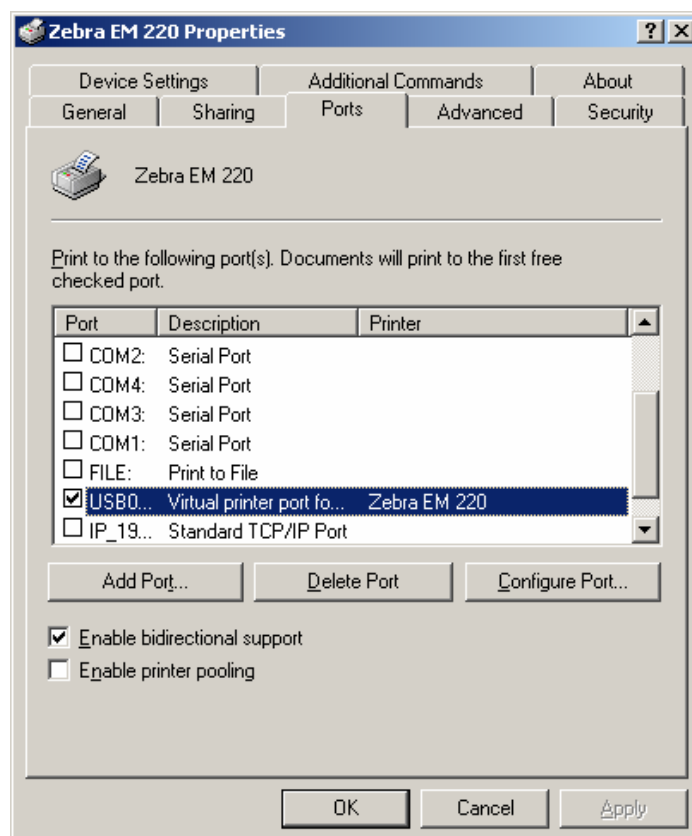


6) Turn on the printer.

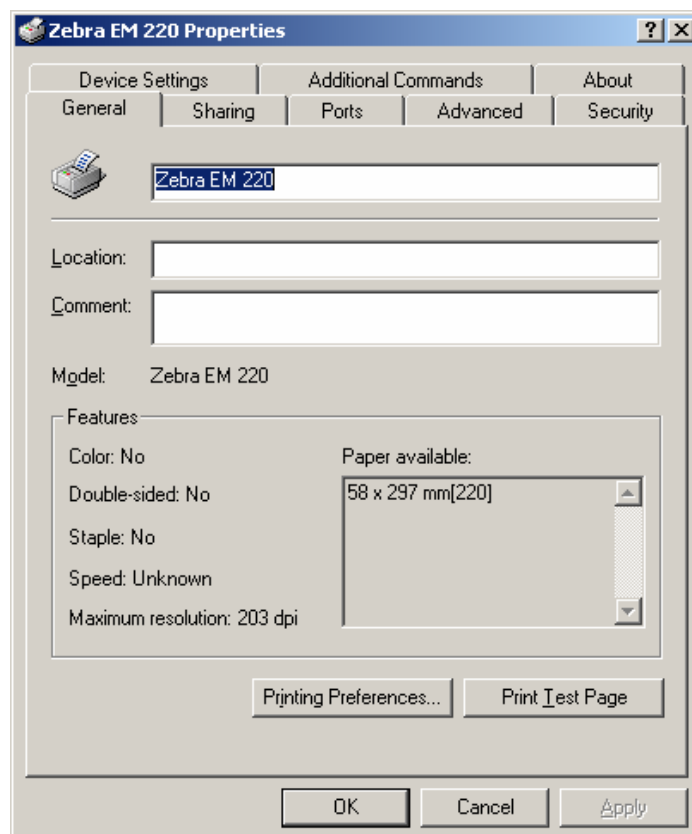
7) The Windows Driver is automatically installed.



8) The USB Port setting can be confirmed in the Windows Driver properties.



9) Click the “Print Test Page” button and check printing status.

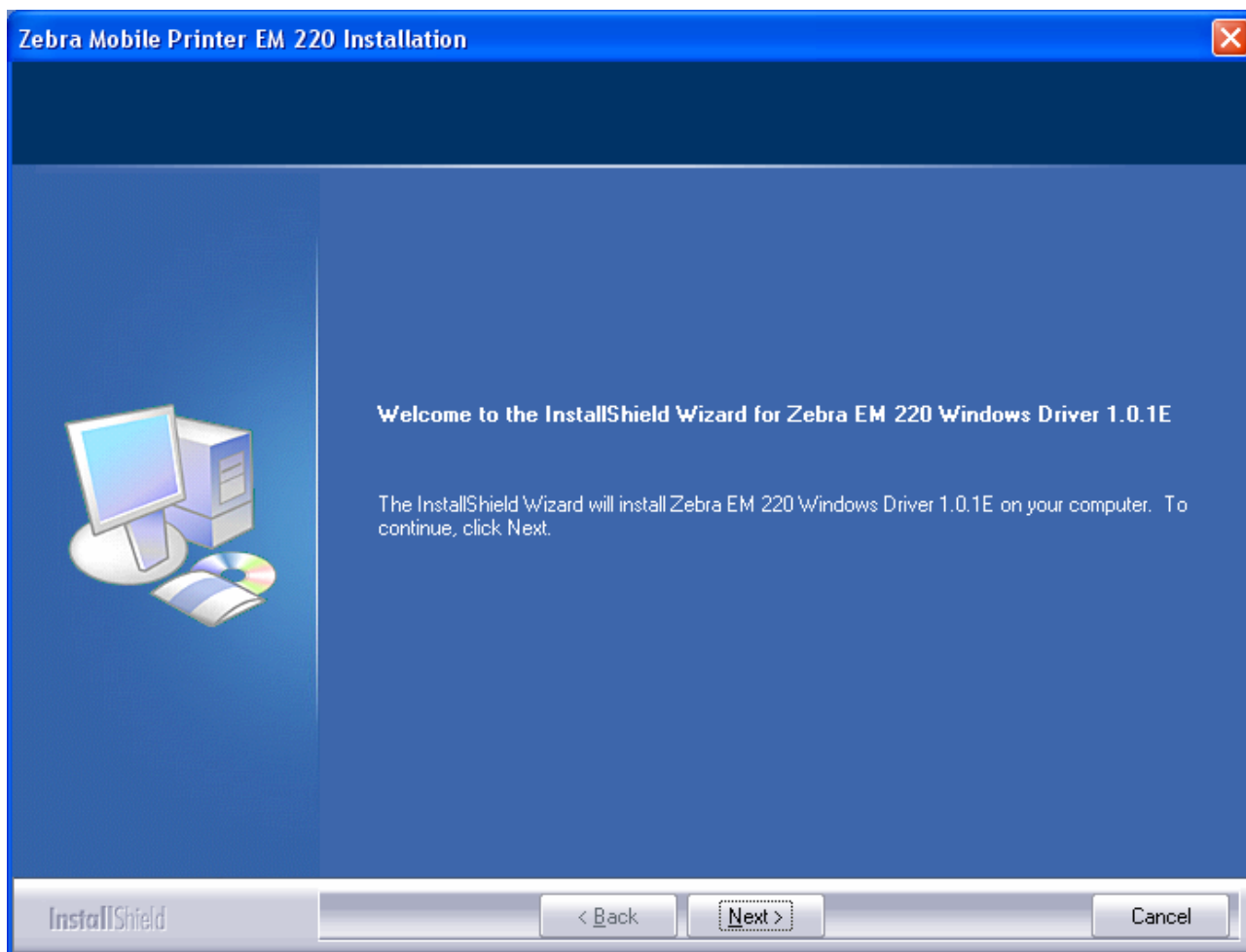


10) Proper installation of the driver is indicated if the test page is printed normally.

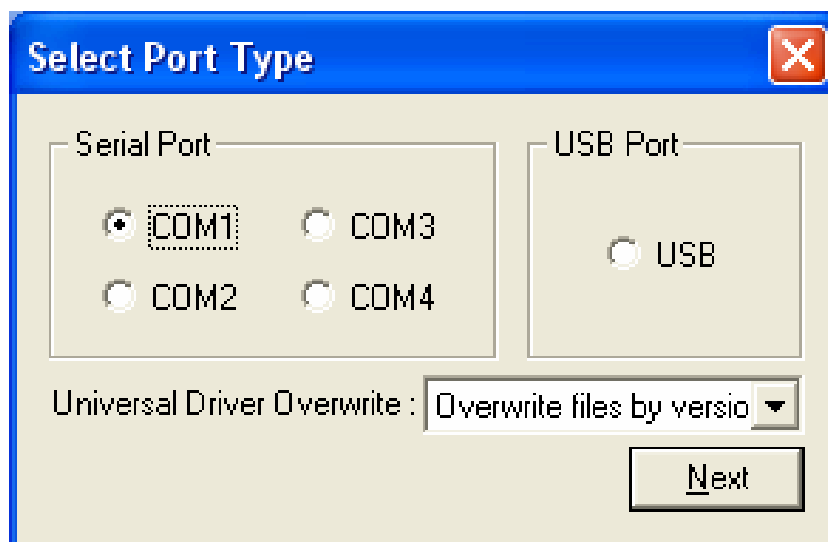
4-3 Installing on Windows XP/2003 Server

4-3-1 Via Serial Port or Bluetooth

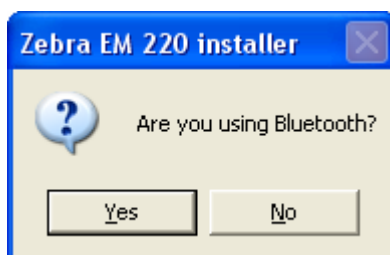
- 1) Double-click the Windows Driver installation file (EM 220 _Vx.x.xx.exe).
- 2) Click the “Next” button.



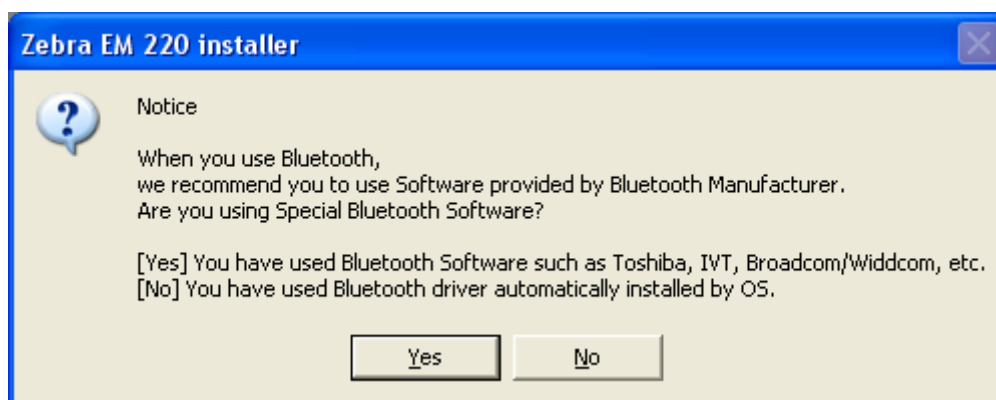
- 3) Select the COM port to be used and click the “Next” button.



- 4) If using Bluetooth, click the “Yes” button.
- Click “No” if using a Serial port.
 - To use Bluetooth, first install the corresponding product software.
(Refer to the user manual of the corresponding product.)



- * Select the Bluetooth Driver to be used.
- “Yes”: to use an IVT, Broadcom Driver
- “No”: to use a driver supplied by the Windows OS



- 5) When the following message box appears, click the “Continue Anyway” button.



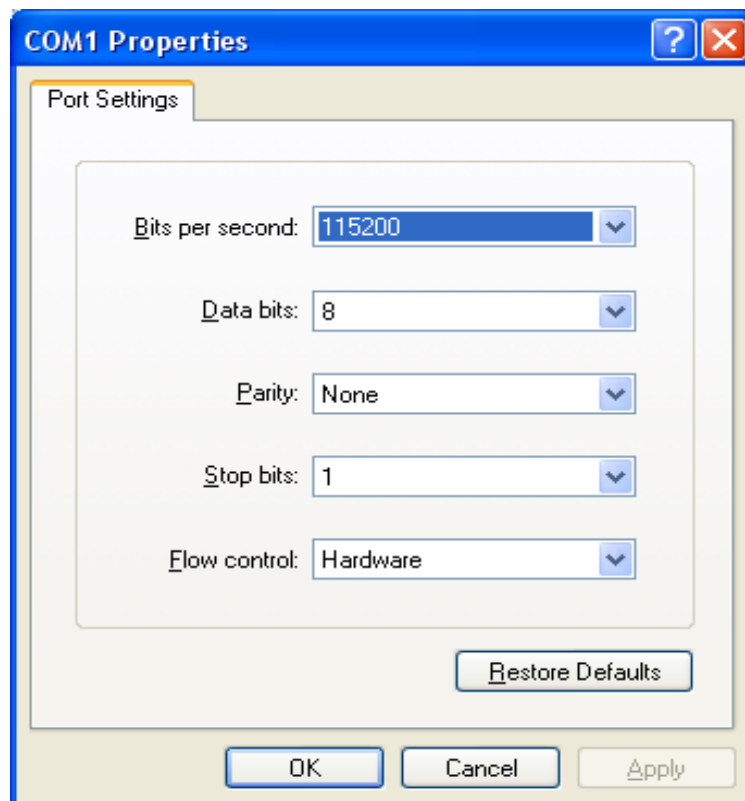
6) Clicking the “Yes” button will reboot the PC.



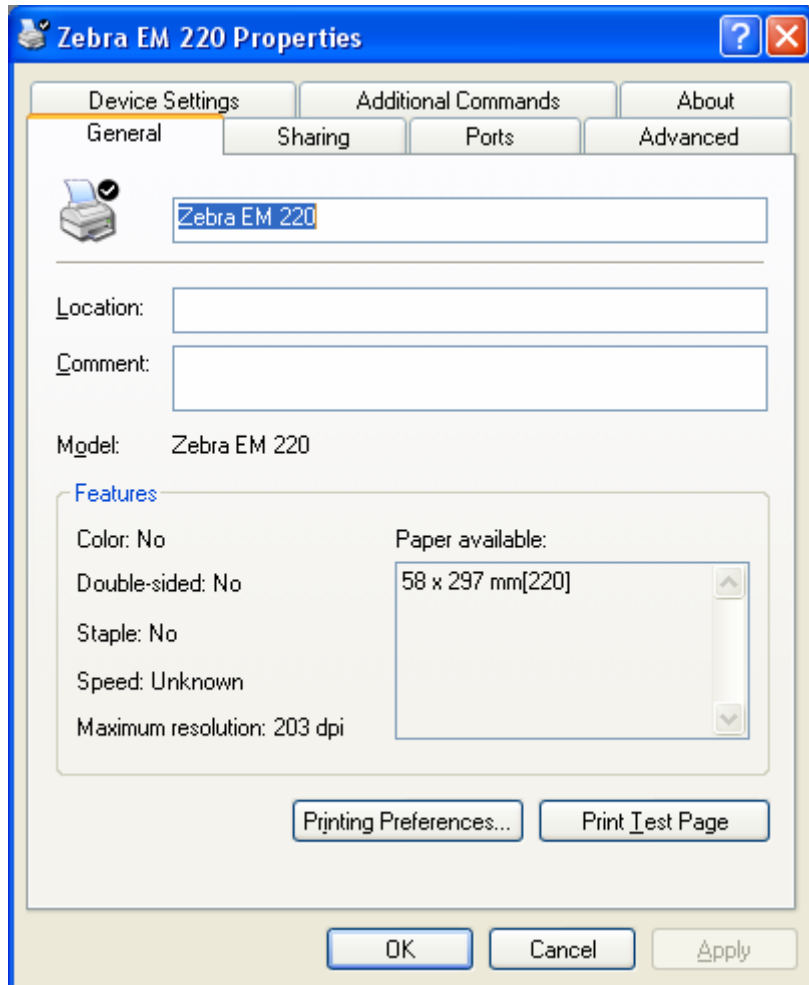
7) Open the printer properties window in the Windows OS.

8) Click the “Port Settings” button in the “Ports” tab.

9) Match the communication settings to those of the printer.
(The communication settings of the printer can be performed by conducting a self-test.)



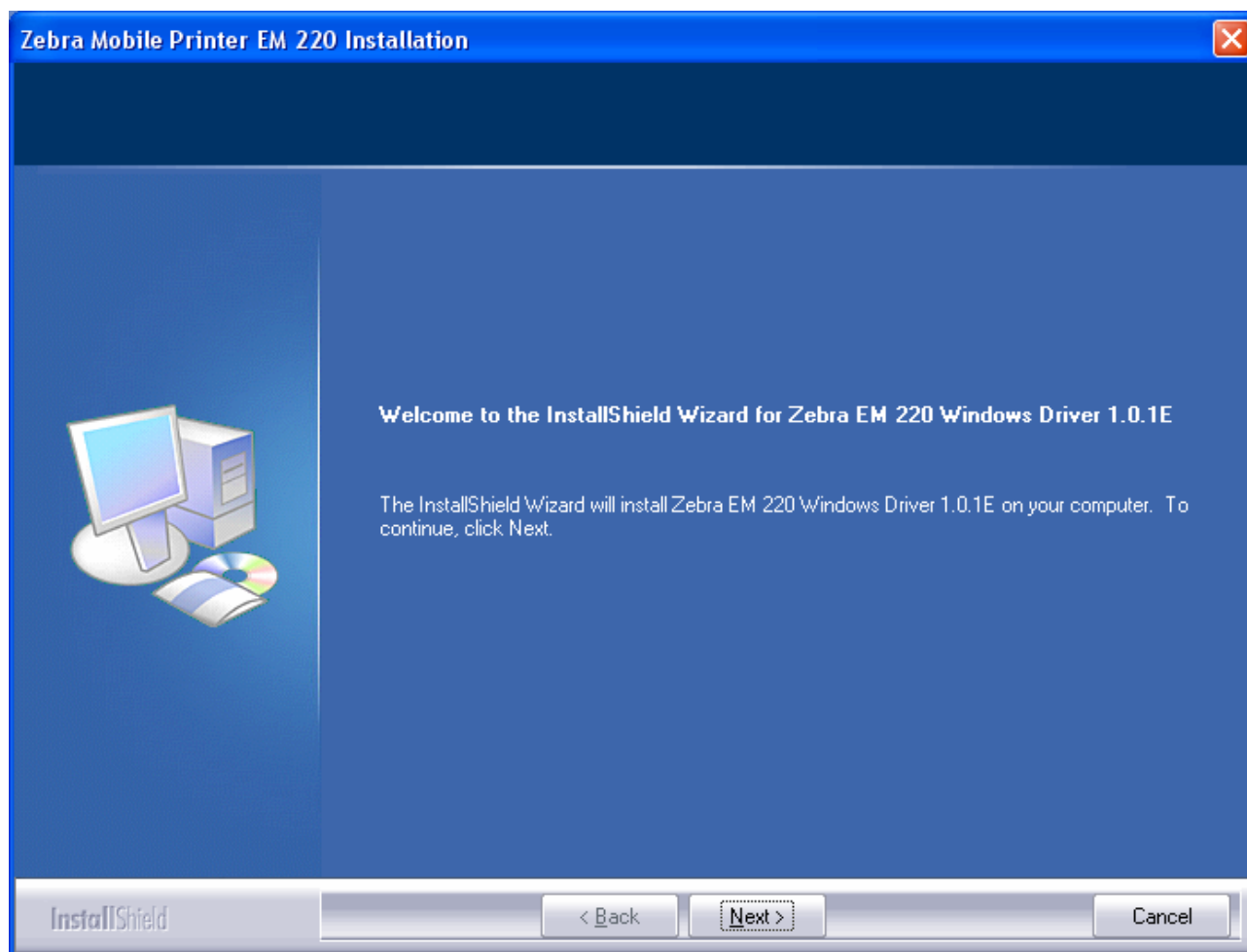
10) Click the “Print Test Page” button and check printing status.



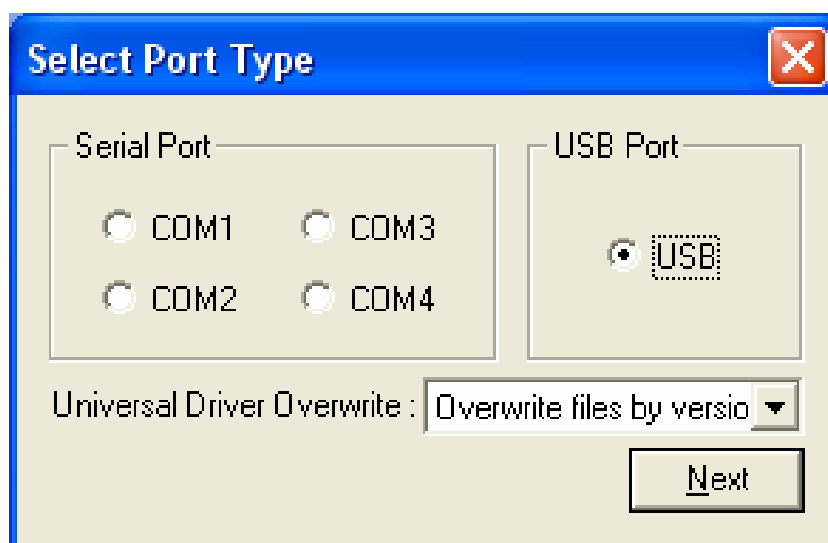
11) Proper installation of the driver is indicated if the test page is printed normally.

4-3-2 Via USB Port

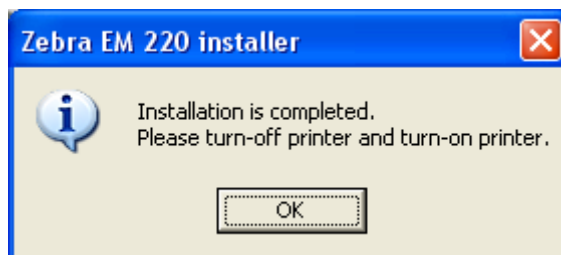
- 1) Double-click the Windows Driver installation file (EM 220_Vx.x.xx.exe).
- 2) Click the “Next” button.



- 3) Select USB and click the “Next” button.

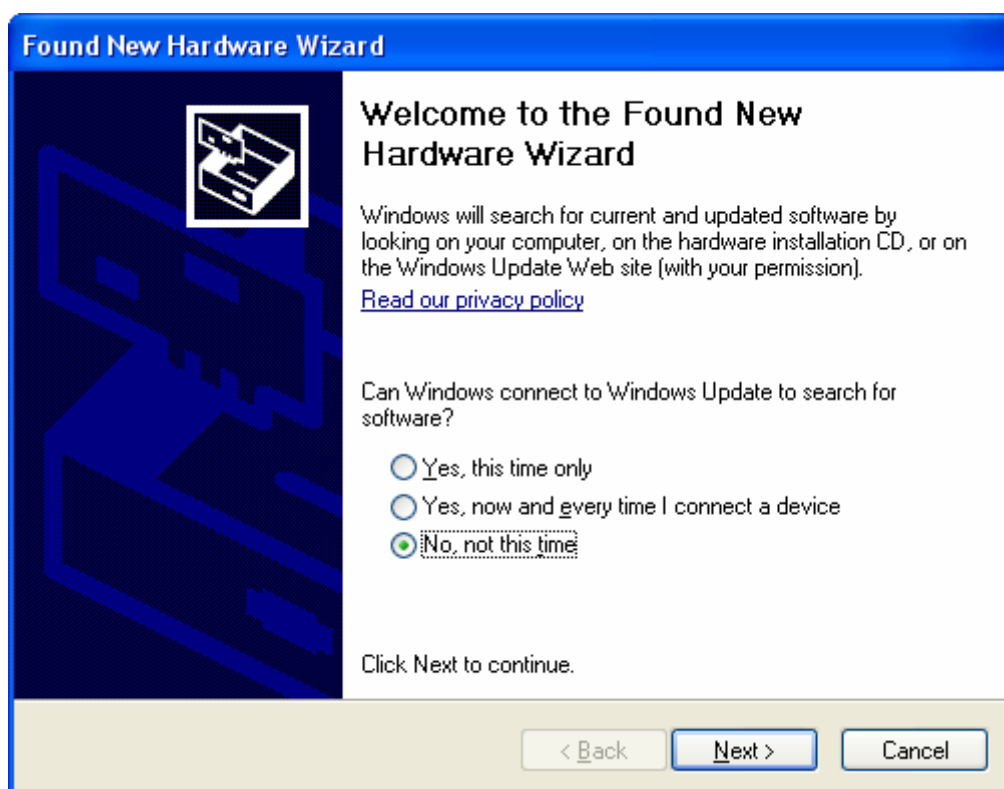


4) Click the “OK” button.

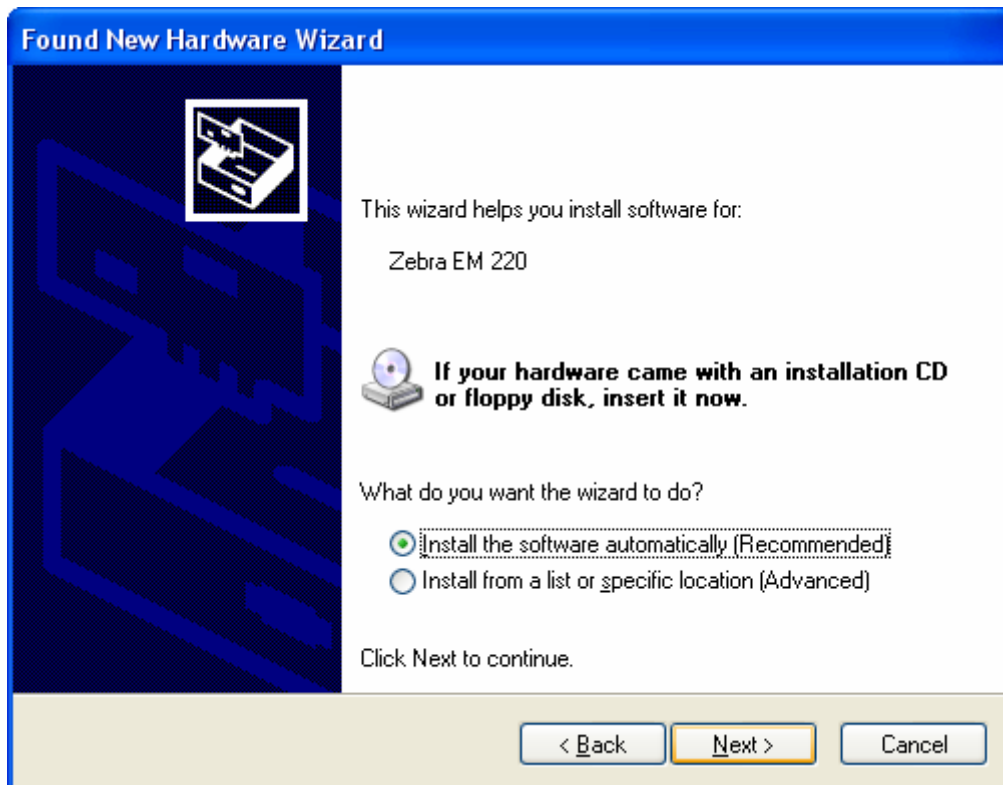


5) Turn on the printer.

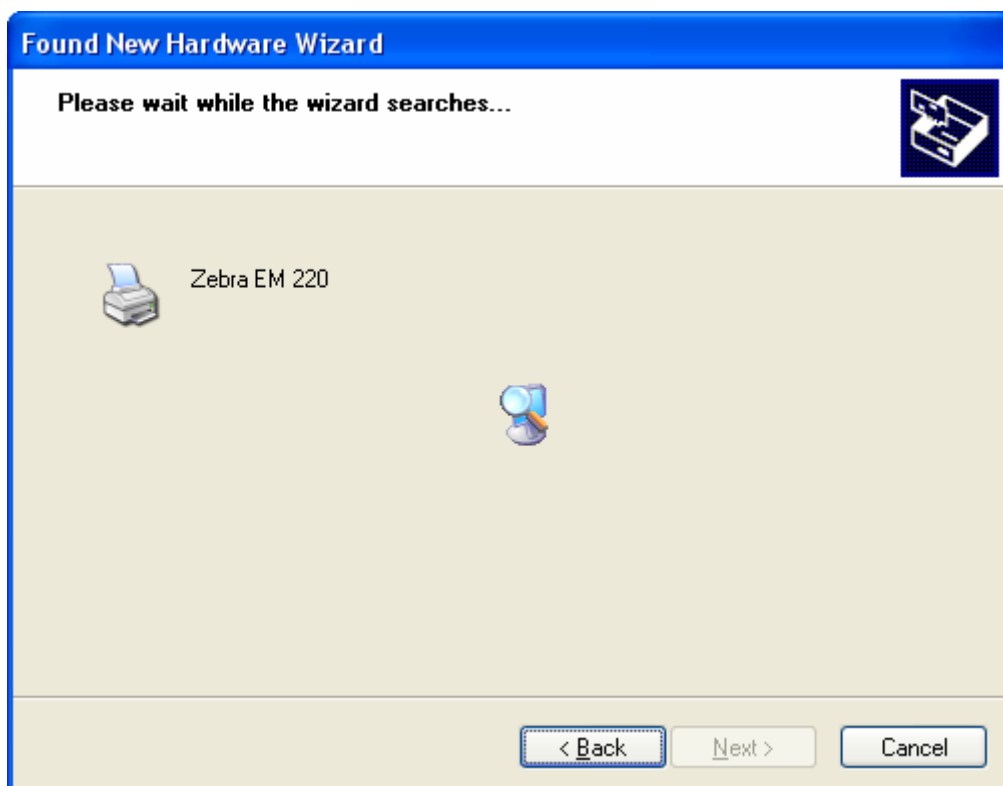
6) When the New Hardware Wizard appears for the installation of the Windows Driver, select the option as shown below and click the “Next” button.



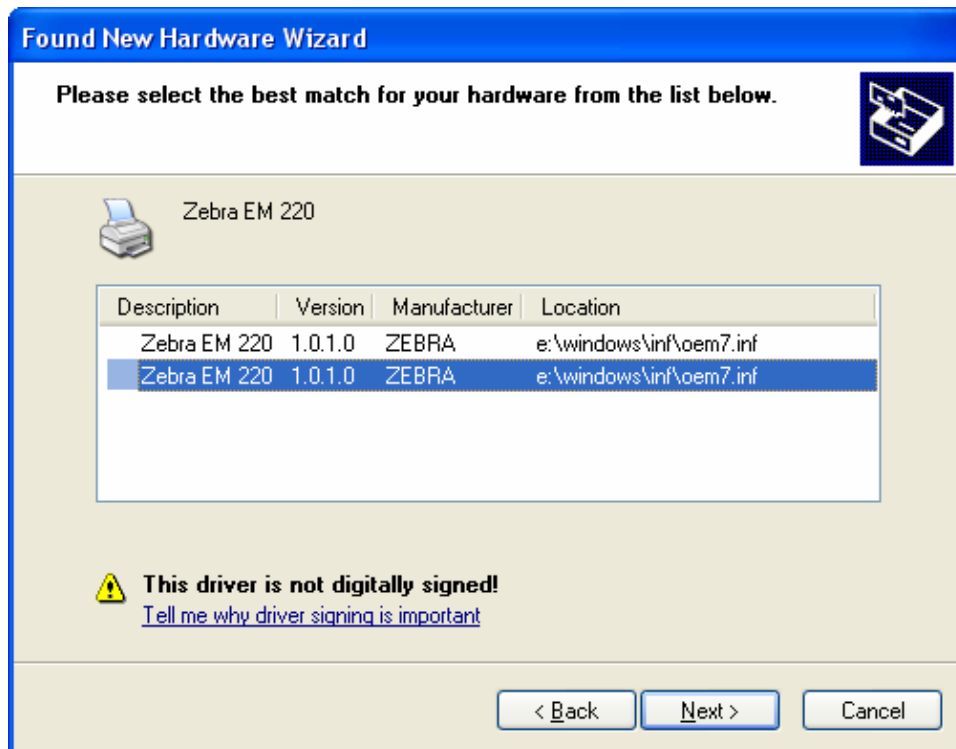
7) Click the “Next” button.



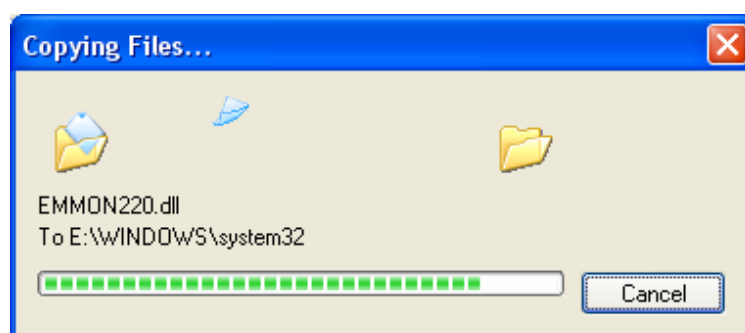
8) Click the “Next” button.



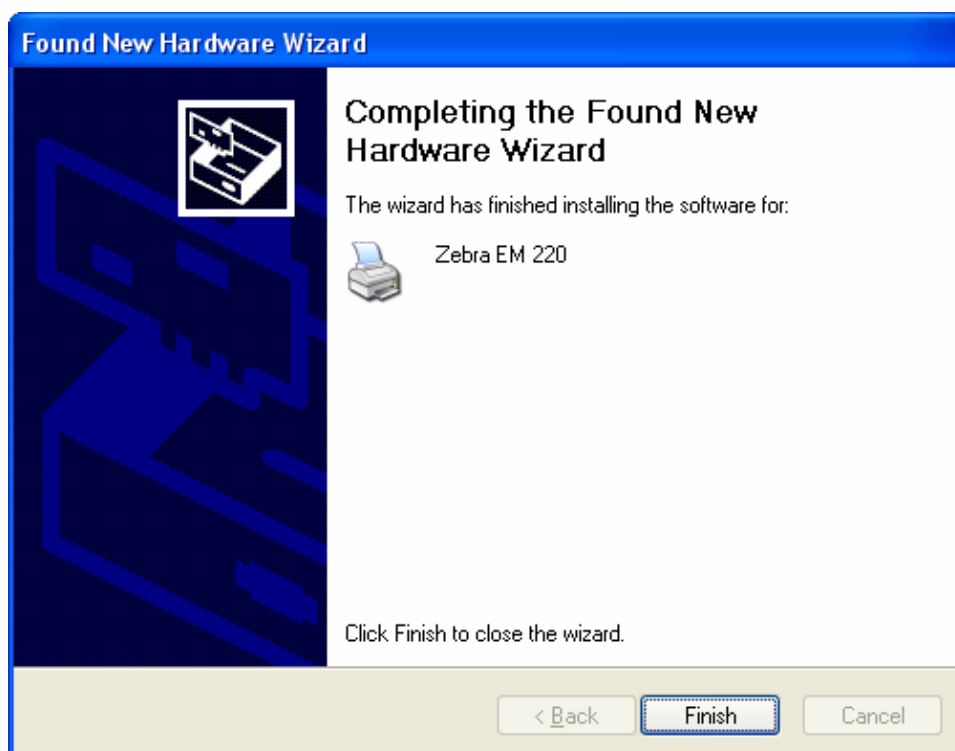
9) Click the “Next” button.



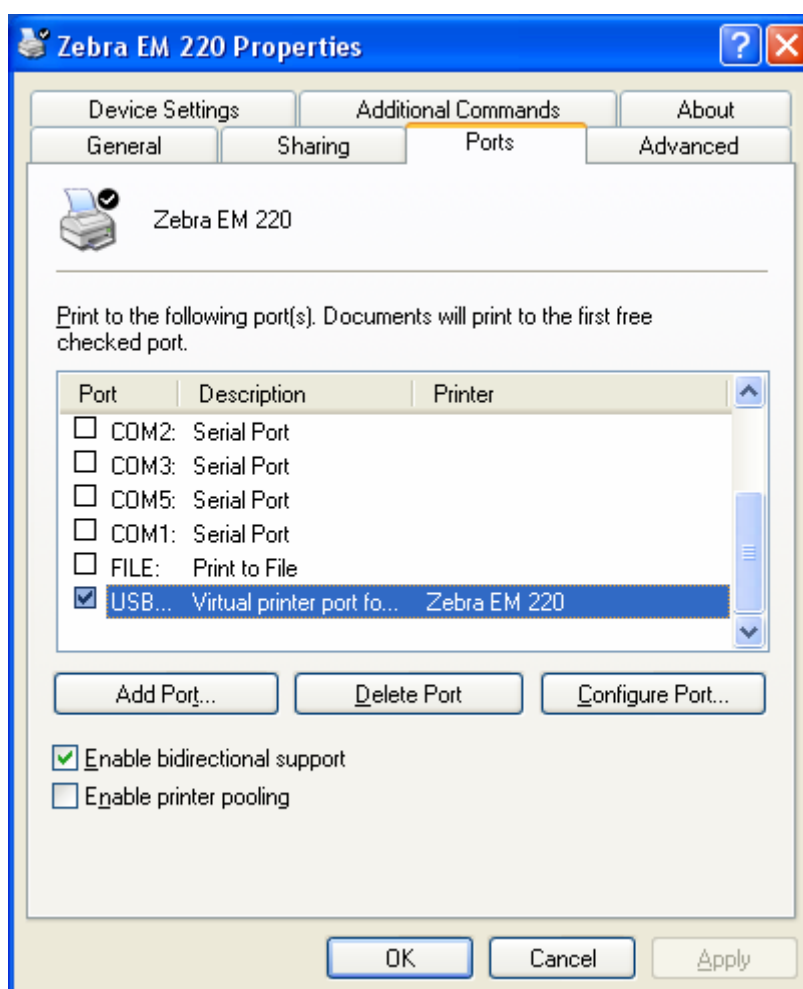
10) Click the “Continue Anyway” button.



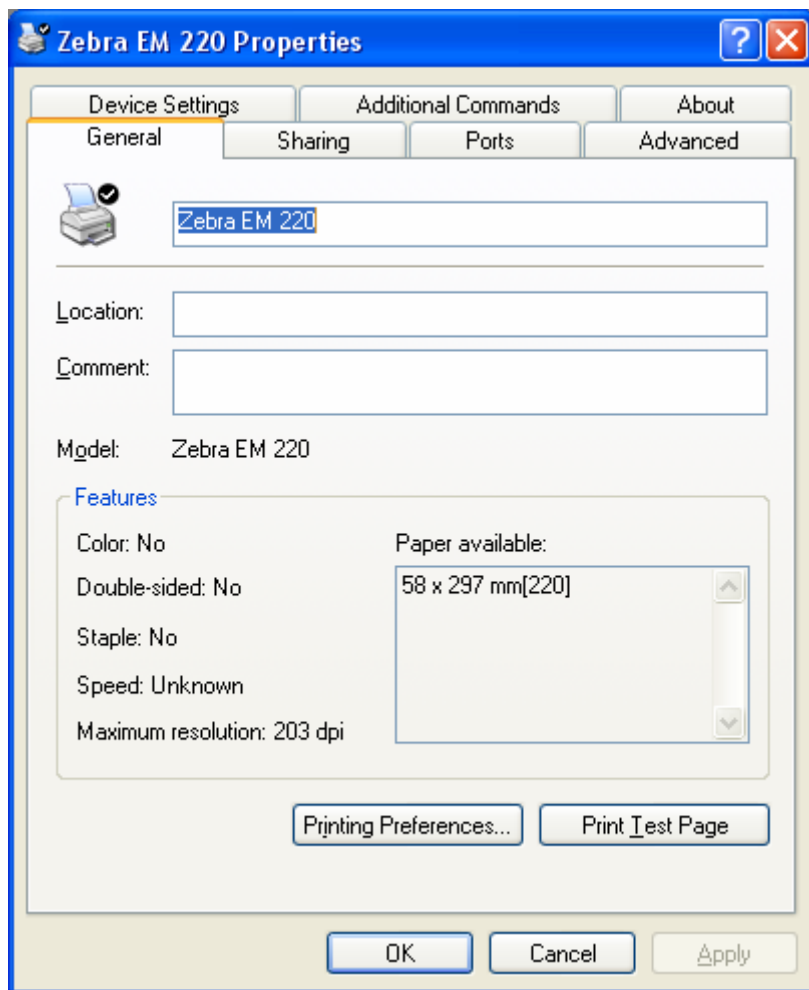
11) Click the “Finish” button.



12) The USB Port setting can be confirmed in the Windows Driver properties.



13) Click the “Print Test Page” button and check printing status.

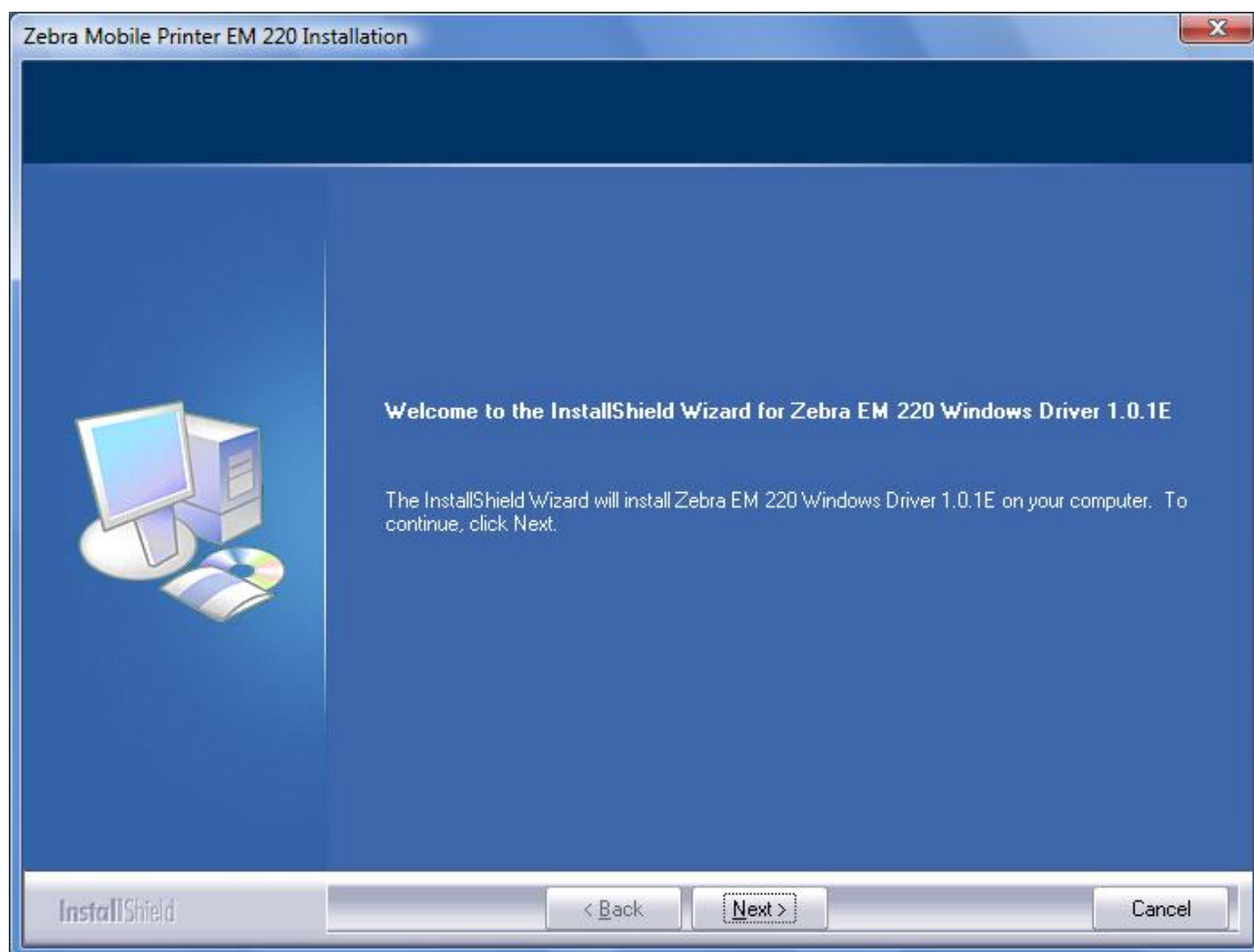


14) Proper installation of the driver is indicated if the test page is printed normally.

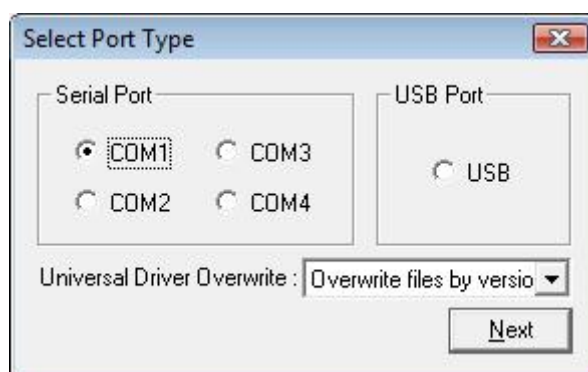
4-4 Installing on Windows VISTA

4-4-1 Via Serial Port or Bluetooth

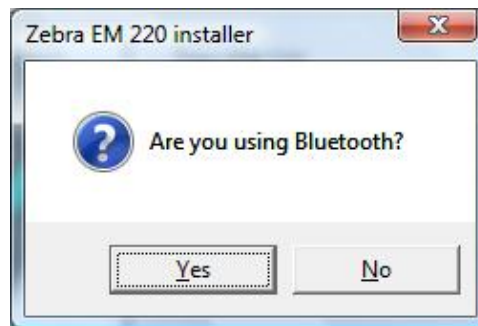
- 1) Double-click the Windows Driver installation file (EM 220_Vx.x.xx.exe).
- 2) Click the “Next” button.



- 3) Select the COM port to be used and click the “Next” button.



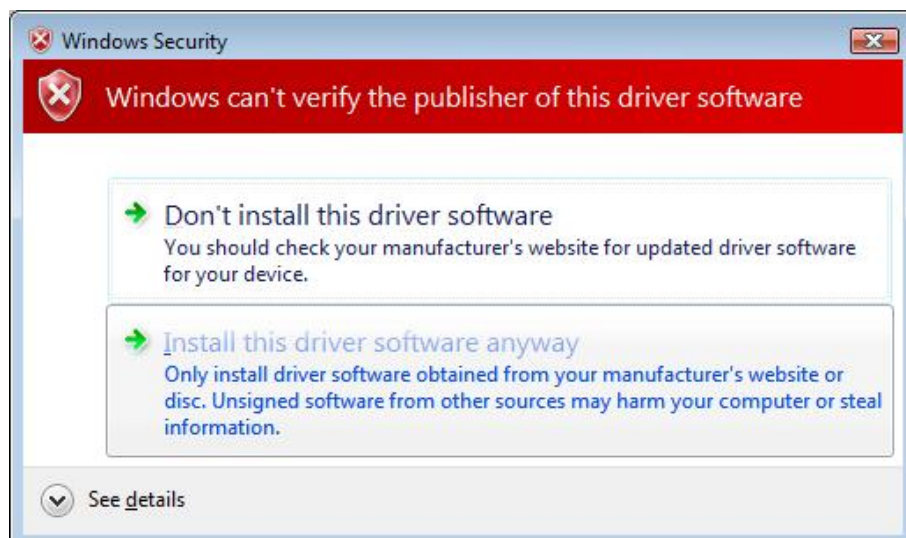
- 4) If using Bluetooth, click the “Yes” button.
- Click “No” if using a Serial port.
 - To use Bluetooth, first install the corresponding product software.
(Refer to the user manual of the corresponding product.)



- * Select the Bluetooth Driver to be used.
- “Yes”: to use an IVT, Broadcom Driver
- “No”: to use a driver supplied by the Windows OS



- 5) When the following message box appears, click the “Install this driver software anyway” button.



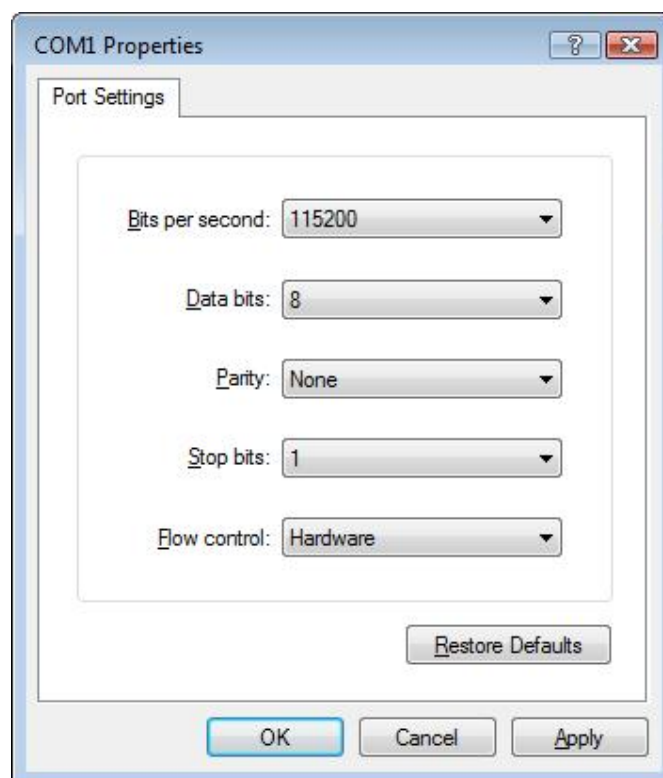
6) Clicking the “Yes” button will reboot the PC.



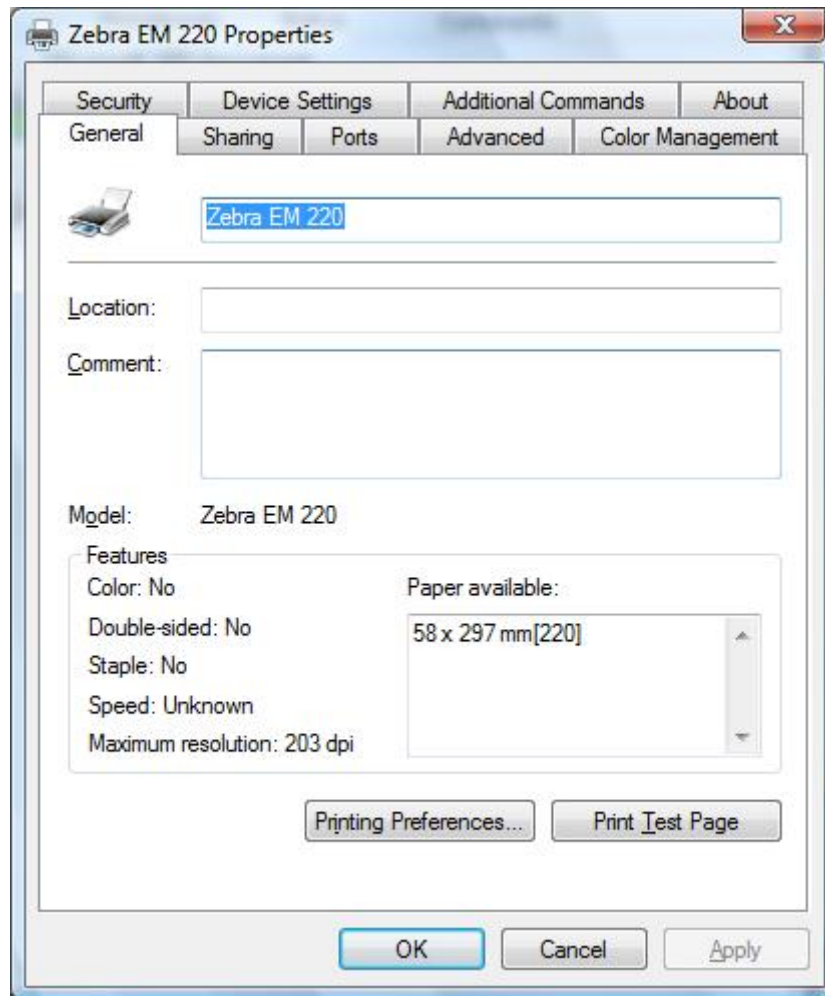
7) Open the printer properties window in the Windows OS.

8) Click the “Port Settings” button in the “Ports” tab.

9) Match the communication settings to those of the printer.
(The communication settings of the printer can be performed by conducting a self-test.)



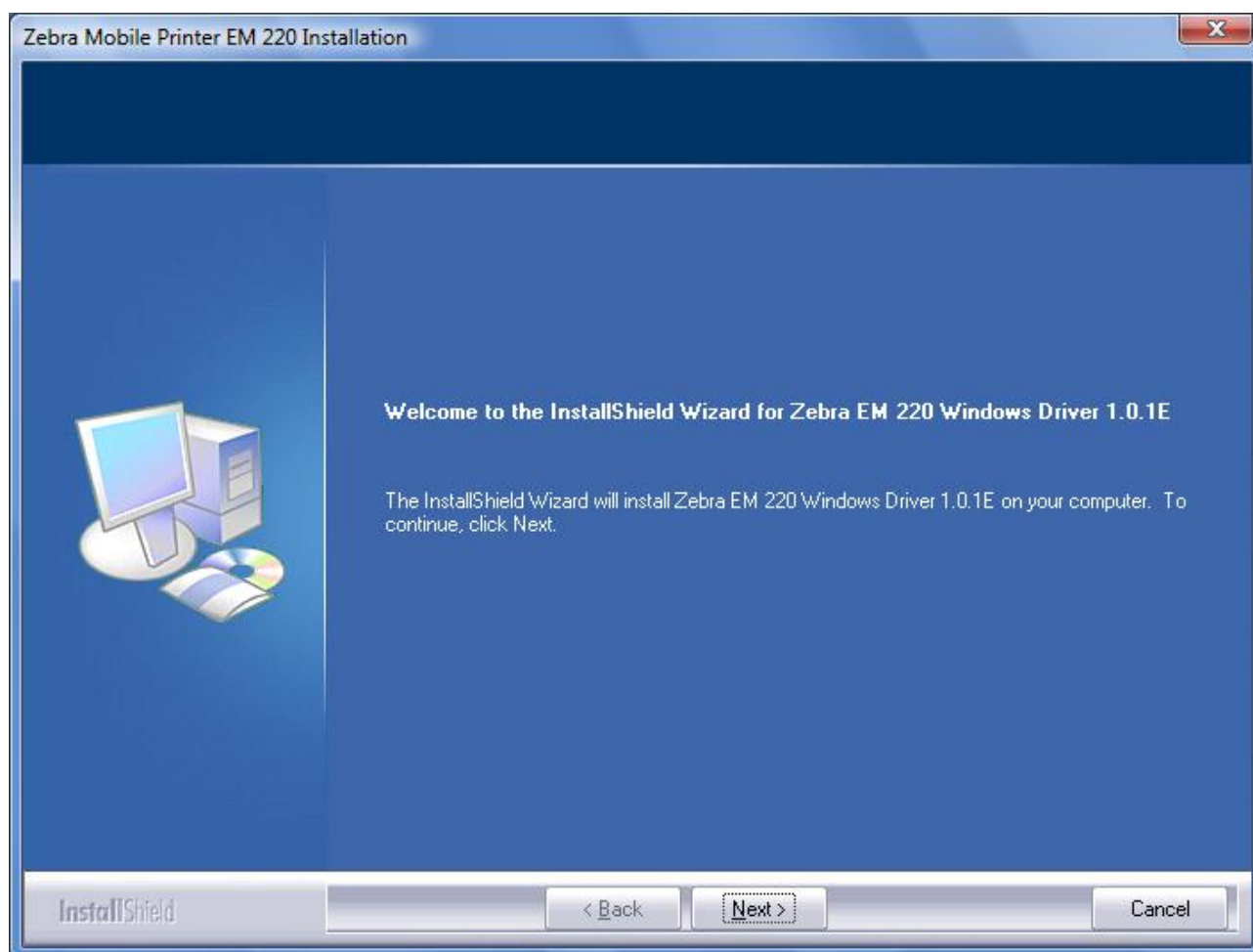
10) Click the “Print Test Page” button and check printing status.



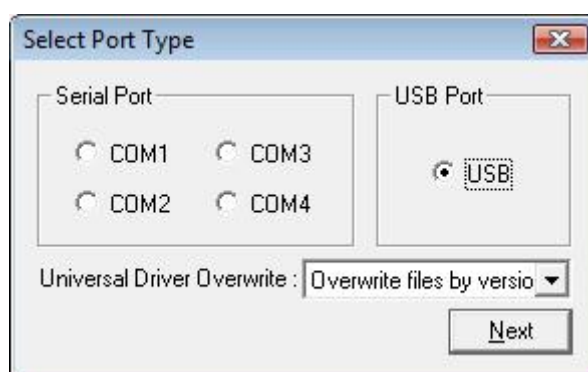
11) Proper installation of the driver is indicated if the test page is printed normally.

4-4-2 Via USB Port

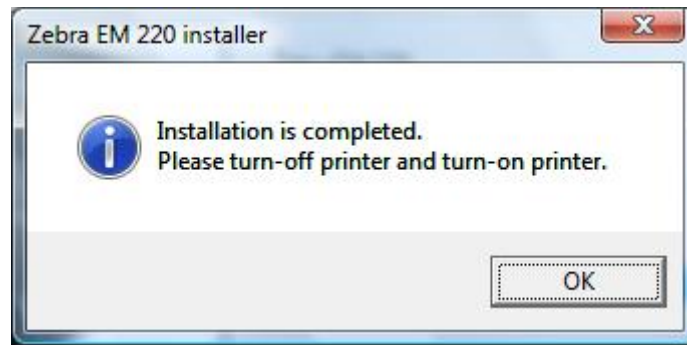
- 1) Double-click the Windows Driver installation file (EM 220_Vx.x.xx.exe).
- 2) Click the “Next” button.



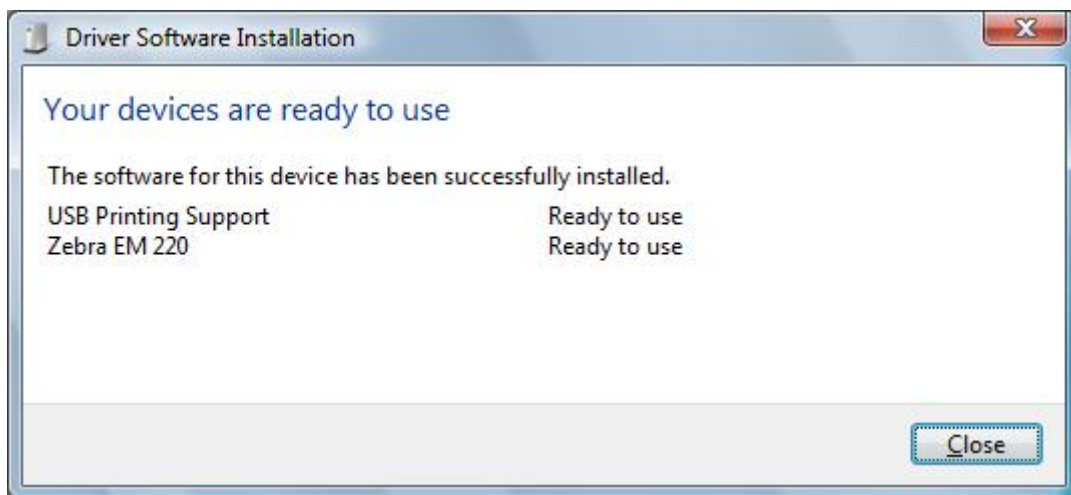
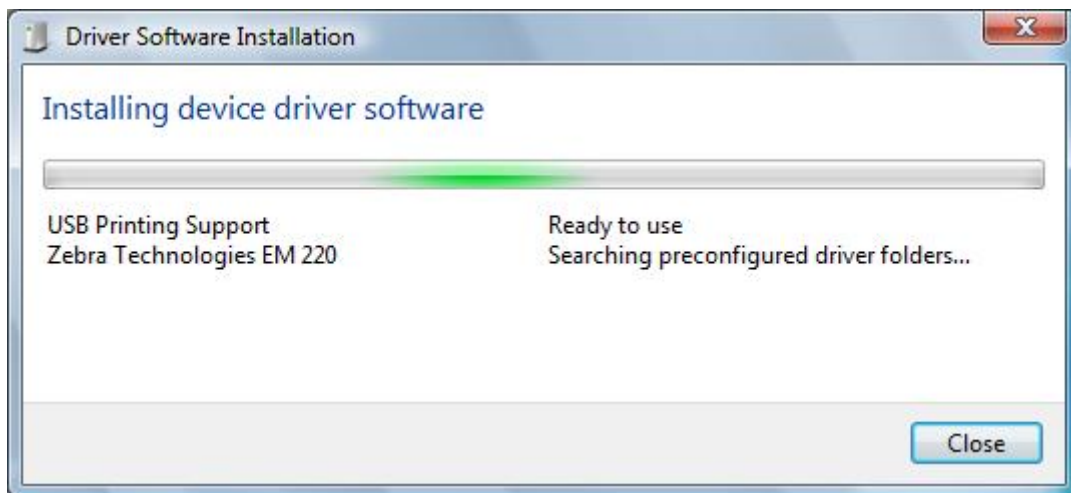
- 3) Select USB and click the “Next” button.



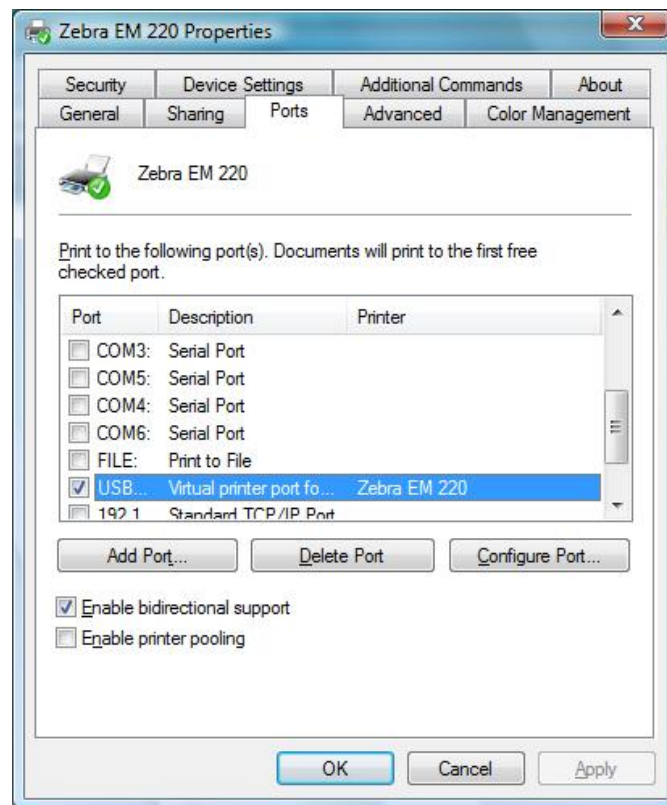
4) Click the “OK” button.



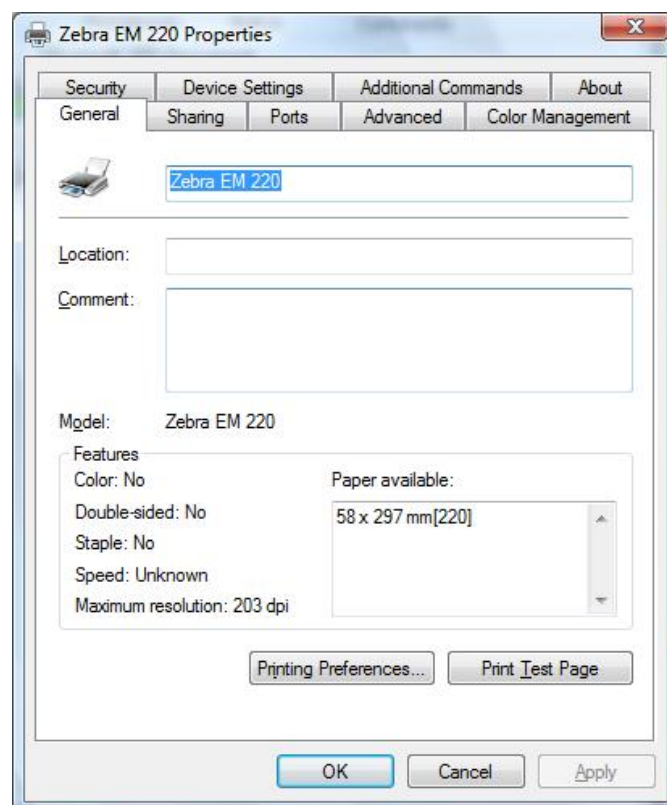
5) Turn on the printer.



6) The USB Port setting can be confirmed in the Windows Driver properties.



7) Click the “Print Test Page” button and check printing status.



8) Proper installation of the driver is indicated if the test page is printed normally..

5. Detailed Windows Driver Settings

The following functions can be set in detail after the Windows Driver installation is complete.

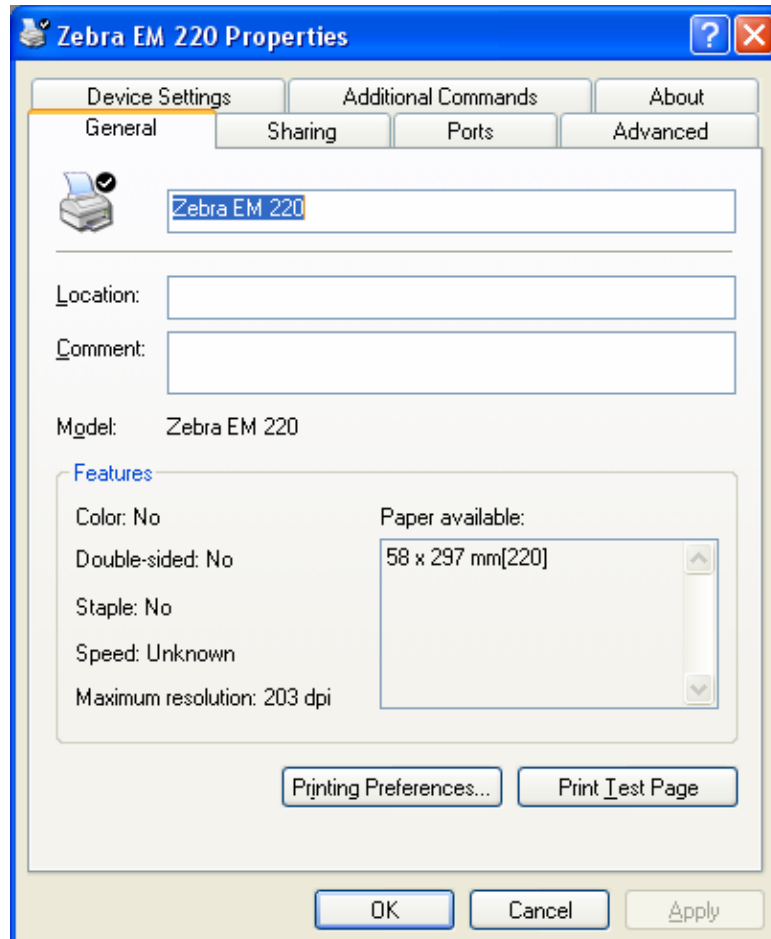
5-1 Paper Supply Method

The printer structure is such that the print head, which carries out printing, and the cutter, which cuts the printing paper, are separated. After printing, the location of the end section can be adjusted as follows.

- Automatically Select: Select the "Receipt" automatically.
- Receipt: Printed text is transferred up to the cutter (manual cutter).
- Receipt [No feed]: Printed text is transferred up to the next line only.
(minimum transfer: 0x0A).
- Form: For long print jobs, printed text is transferred according to the Receipt option per selected paper size.

Detailed setting can be done as follows.

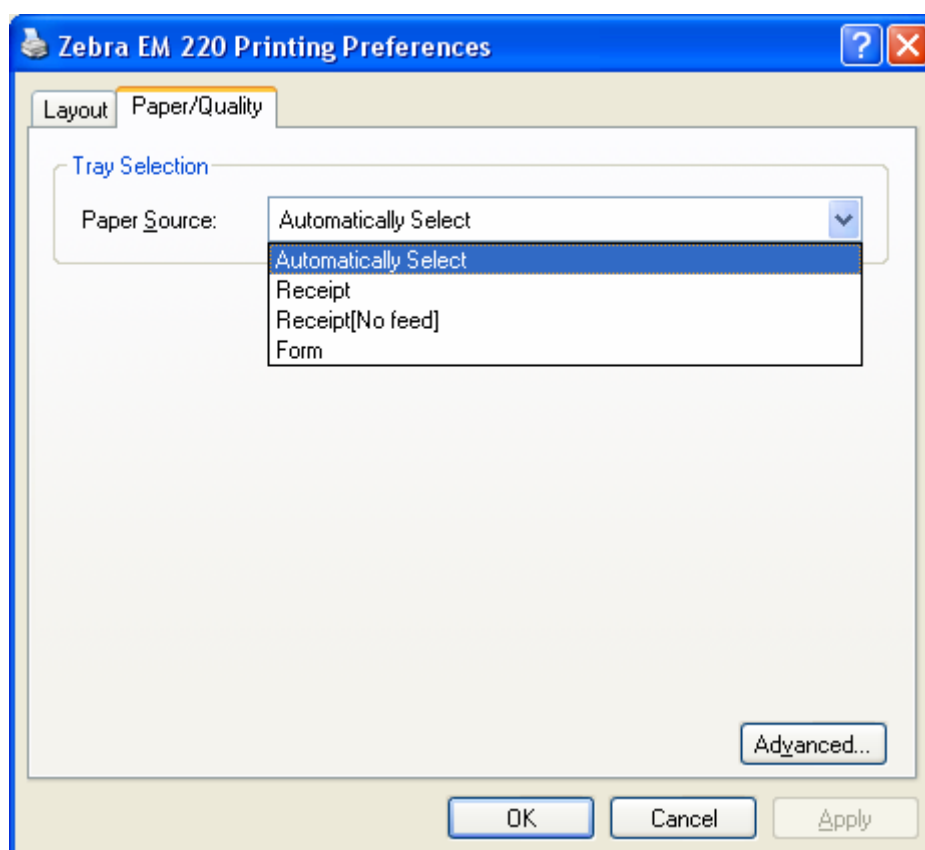
- 1) Open the printer properties window in the Windows OS.



2) Click the “Printing Preferences” button in the “General” tab.
The button name varies by Windows OS. Refer to the following:

- Windows 95/98/ME: “Properties”
- Windows NT4.0: “Document Defaults”
- Windows 2000/XP/2003 Server: “Printing Preferences”
- Windows WEPOS/VISTA: “Printing Preferences”

3) Select the desired setting in the “Paper/Quality” tab.
(Resolution is fixed at 203 × 203.)



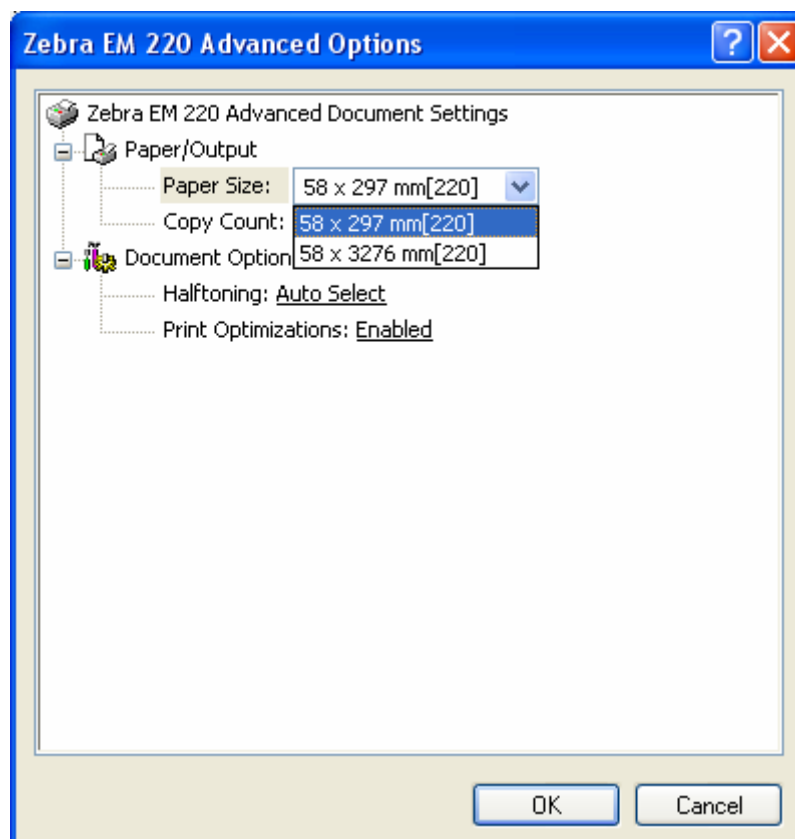
5-2 Paper Size

The paper sizes available in the Windows Driver are as follows:

- 58 × 297 mm [220]
- 58 × 3276 mm [220]
- Custom Size (Windows 9x supported)

Detailed setting can be done as follows:

- 1) Open the printer properties window in the Windows OS.
- 2) Click the “Printing Preferences” button in the “General” tab.
The button name varies by Windows OS. Refer to the following:
 - Windows 95/98/ME: “Properties”
 - Windows NT4.0: “Document Defaults”
 - Windows 2000/XP/2003 Server: “Printing Preferences”
 - Windows WEPOS/VISTA: “Printing Preferences”
- 3) Select the “Paper/Quality” tab, and click the “Advanced” button.
Select the desired setting.



5-3 Additional Commands

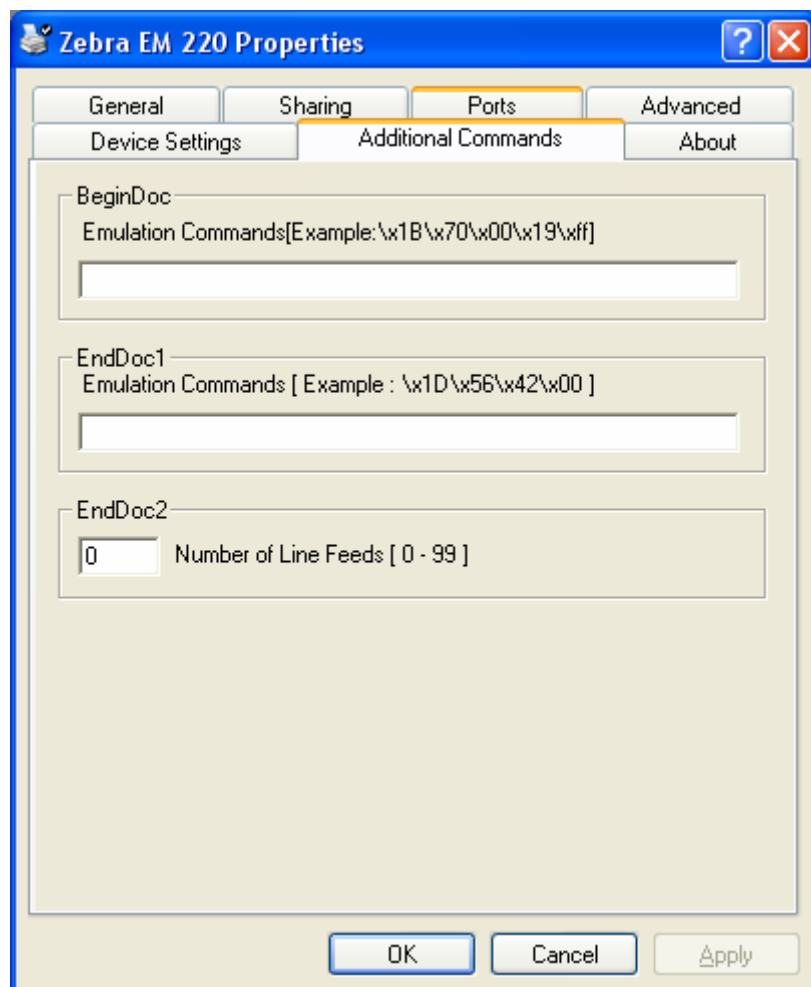
The Windows Driver serves to receive the content for print from an application and send it to the printer. The Additional Commands function allows for the addition of desired commands at the beginning or end of the print content sent to the printer.

The command functions available are as follows:

- BeginDoc: addition of command at the beginning of the print content
- EndDoc1: addition of command at the end of the print content
- EndDoc2: addition of line feeding at the end of the print content

Detailed setting can be done as follows:

- 1) Open the printer properties window in the Windows OS.
- 2) Click the “Additional Commands” tab.



- 3) If the user opts to open Cash Drawer 1 prior to printing, enter “\x1B\x70\x00\x19\xff” in the “BeginDoc” space and click the “OK” button.
- 4) If the user opts to open Cash Drawer 1 at the end of printing, enter “\x1B\x70\x00\x19\xff” in the “EndDoc1” space and click the “OK” button.
- 5) If the user opts to feed three lines at the end of printing, enter “3” in the “EndDoc2” space and click the “OK” button.

For more information on the hexadecimals that can be entered in “BeginDoc” and “EndDoc1”, refer to the Control Commands Manual.

6. Windows Driver Specifications

6-1 Fonts

The Windows Driver of the printer supports the fonts listed below.

Printing is done at faster speed when using the fonts below as opposed to the Windows fonts of the OS.

Printer Fonts			Character Size (dot)	Sizes (point)
FontA1x1	FontA1x1[Ext.]	FontA1x1[255]	FontA1x1(12x24)	8.5
FontA1x2	FontA1x2[Ext.]	FontA1x2[255]	FontA1x2(12x48)	17
FontA2x1	FontA2x1[Ext.]	FontA2x1[255]	FontA2x1(24x24)	8.5
FontA2x2	FontA2x2[Ext.]	FontA2x2[255]	FontA2x2(24x48)	17
FontA2x4	FontA2x4[Ext.]	FontA2x4[255]	FontA2x4(24x96)	34
FontA4x2	FontA4x2[Ext.]	FontA4x2[255]	FontA4x2(48x48)	17
FontA4x4	FontA4x4[Ext.]	FontA4x4[255]	FontA4x4(48x96)	34
FontA4x8	FontA4x8[Ext.]	FontA4x8[255]	FontA4x8(48x192)	68
FontA8x4	FontA8x4[Ext.]	FontA8x4[255]	FontA8x4(96x96)	34
FontA8x8	FontA8x8[Ext.]	FontA8x8[255]	FontA8x8(96x192)	68
FontB1x1	FontB1x1[Ext.]	FontB1x1[255]	FontB1x1(9x24)	6
FontB1x2	FontB1x2[Ext.]	FontB1x2[255]	FontB1x2(9x48)	12
FontB2x1	FontB2x1[Ext.]	FontB2x1[255]	FontB2x1(18x24)	6
FontB2x2	FontB2x2[Ext.]	FontB2x2[255]	FontB2x2(18x48)	12
FontB2x4	FontB2x4[Ext.]	FontB2x4[255]	FontB2x4(18x96)	24
FontB4x2	FontB4x2[Ext.]	FontB4x2[255]	FontB4x2(36x48)	12
FontB4x4	FontB4x4[Ext.]	FontB4x4[255]	FontB4x4(36x96)	24
FontB4x8	FontB4x8[Ext.]	FontB4x8[255]	FontB4x8(36x192)	48.5
FontB8x4	FontB8x4[Ext.]	FontB8x4[255]	FontB8x4(72x96)	24
FontB8x8	FontB8x8[Ext.]	FontB8x8[255]	FontB8x8(72x192)	48.5

Printer Fonts are defined as follows.

1) FontA1x2

- ANSI Character code support (Code Page 16: 1252)
- Character size (dot): 12 x 24 (double height)
- Sizes (point): 17

2) FontA1x2[Ext]

- IBM expansion Character code support (Code Page 0: 437)
- Character size (dot): 12 x 24 (double height)
- Sizes (point): 17

3) FontA1x2[255]

- Buyer exclusive code support (Code Page 255)
- Character size (dot): 12 x 24 (double height)
- Sizes (point): 17

6-2 Special Functions

The Windows Driver supports the special functions indicated below.
These special functions are available when using the characters after the “FontControl” font is selected.

Note: This function is not an ordinary character printing function.

Character	Special Function
5	Prints HT (0 x 09)
6	Prints LF (0 x 0A)
7	Prints CR (0 x 0D)
i	Prints 1 st color image in double-sized mode.
j	Prints 2 nd color image in double-sized mode.
k	Prints 3 rd color image in double-sized mode.
l	Prints 4 th color image in double-sized mode.
m	Prints 5 th color image in double-sized mode.
p	Does not add HRI characters to the barcode
q	Adds HRI characters in FontA above the barcode
r	Adds HRI characters in FontA below the barcode
s	Adds HRI characters in FontB above the barcode
t	Adds HRI characters in FontB below the barcode
w	Aligns text to the left
x	Aligns text to the center
y	Aligns text to the right
R	Prints 1 st color image.
S	Prints 2 nd color image.
T	Prints 3 rd color image.
U	Prints 4 th color image.
V	Prints 5 th color image.

1) Sample Use

If the “FontControl” font is selected and 6 is entered, the “LF” (Line Feeding) operation is activated.

(does not entail the printing of the character “6”)

2) “FontControl” Font Function

Printer Font for Special Function	Function	Size (point/dot)
FontControl	Justification (Left/Center/Right) Output HT, Output LF, Output CR Barcode Printing Print NV Graphic Data	(8.5 / 12x24)

6-3 Barcodes

The Windows Driver supports the barcodes indicated below.
 This function is available when entering barcode data after selecting “Printer Font Name”.
 In addition, the “FontControl” font can be used to add HRI characters.

Printer Font Name	Size	Supported Characters
Codabar	18/35.5/53/71	Numeric: 0~9 Symbols: \$, +, -, ., /, : Letters: A~D
Code39	18/35.5/53/71	Numeric: 0~9 Symbols: \$, +, -, ., / Letters: A~Z
JAN13(EAN)	18/35.5/53/71	Numeric: 0~9
JAN8(EAN)	18/35.5/53/71	Numeric: 0~9
ITF	18/35.5/53/71	Numeric: 0~9
UPC-A	18/35.5/53/71	Numeric: 0~9
UPC-E	18/35.5/53/71	Numeric: 0~9
Code93	18/35.5/53/71	ASCII CODE: 0~127
Code128	18/35.5/53/71	ASCII CODE: 0~127

1) Sample Use

Select “Code39” and Size “18”, and then enter “1234”.
 The barcode corresponding to “1234” is printed.

2) When Using Code128

Select “Code128” and Size “18”, and then enter “{B1234”.
 The barcode corresponding to “1234” is printed.

When using “Code128”, characters, such as “{A”, “{B”, “{C”, must be included before the input data.

6-4 Two-Dimensional Barcodes

The Windows Driver supports the following two-dimensional barcodes.

- PDF417
- QR Code

Usage is identical to that for barcodes.

7. Use of Windows Driver

7-1 Use of Visual Basic

This section explains the use of the Windows Driver with Visual Basic to control the printer (EM 220).

Sample programs are saved together if the Windows Driver is installed.

7-1-1 Windows Driver Selection

The following code is an example of the selection of the “Zebra EM 220” Windows Driver:

```
For Each prnPrinter In Printers
  If prnPrinter.DeviceName = "Zebra EM 220" Then
    Set Printer = prnPrinter
  Exit For
End If
Next
```


7-1-2 Test Printing

The following code is an example of the printing of Arial Test via the Windows font, and FontA1x1Test via the printer font:

```
'Print in Windows font
Printer.FontSize = 9
Printer.FontName = "Arial"
Printer.Print "Arial Test"

'Print in printer font
Printer.FontSize = 8.5
Printer.FontName = "FontA1x1"
Printer.Print "FontA1x1Test"

Printer.EndDoc
```

7-1-3 Barcode Printing

The following code is an example of the printing of the JAN8 (EAN) barcode:

```
'Print Bar Code.
Printer.FontSize = 18

Printer.FontName = "JAN8 (EAN)"
Printer.Print "1234567"

Printer.EndDoc
```

7-1-4 Two-Dimensional Barcode Printing

The following code is an example of the printing of the PDF417 two-dimensional barcode:

```
'Print Two-dimensional Codes.
Printer.FontSize = 9.5

Printer.FontName = "PDF417"
Printer.Print "Print Test PDF417"

Printer.EndDoc
```

7-2 Use of Wordpad

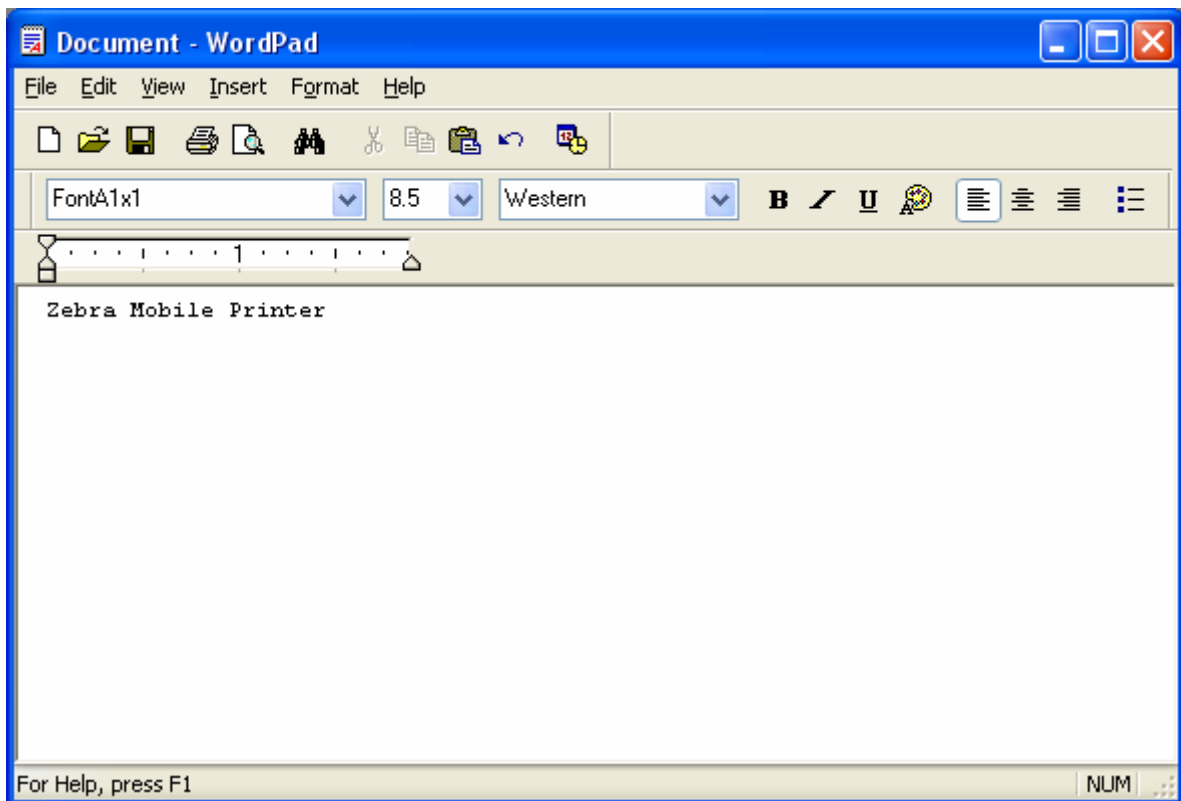
7-2-1 Wordpad Environment Settings

After running Wordpad and setting the following conditions, conduct a test.

- Select Printer
After selecting “Print” from the “File” tab, select the printer (Zebra EM 220).
- Select Paper Size, Orientation, and Margins
After selecting “Page Settings” from the “File” tab, select the paper size, orientation, and margins.

7-2-2 Text Printing

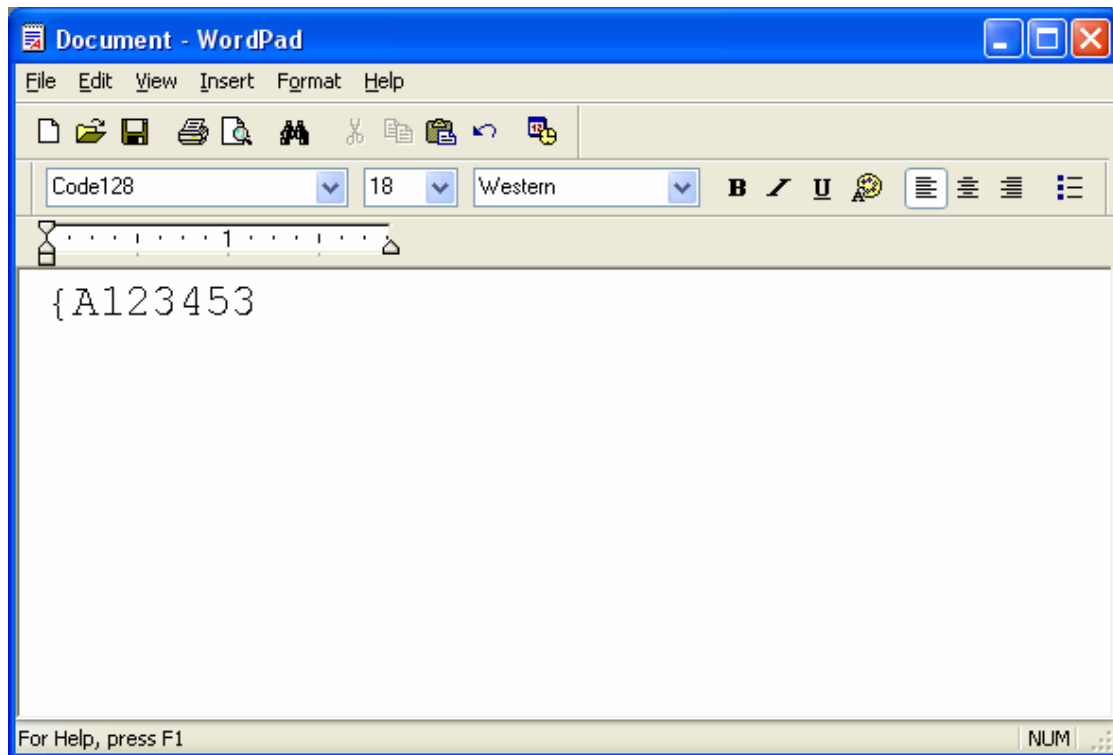
Use the Windows Driver of the printer to run a test.



- 1) Select the desired font from the Font menu (FontA 1x1).
- 2) Select the desired font size (8.5).
- 3) Enter the text to be printed in Wordpad.
- 4) Click the Print button in the toolbar to print.

7-2-3 Barcode Printing

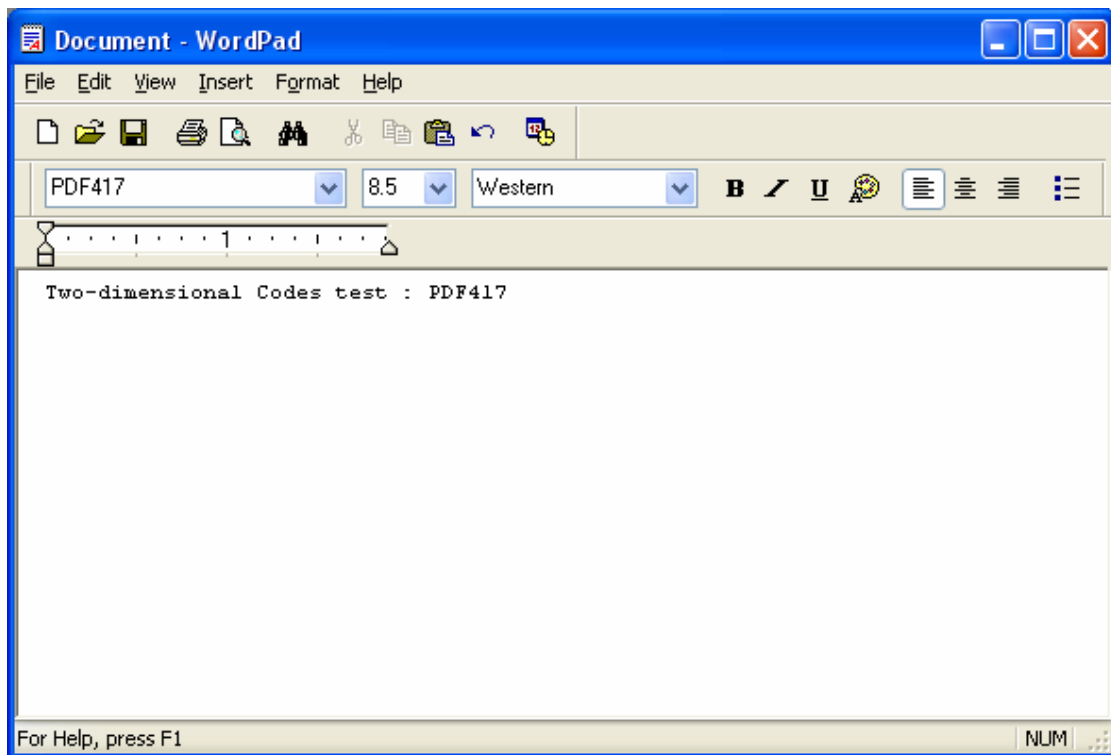
Use the Windows Driver of the printer to print the barcode.



- 1) Select the desired barcode from the Font menu (Code128).
- 2) Select the desired font size (18).
- 3) Enter "{A123435" in Wordpad.
- 4) Click the Print button in the toolbar to print.

7-2-4 Two-Dimensional Barcode Printing

Use the Windows Driver of the printer to print the two-dimensional barcode.



- 1) Select the desired two-dimensional barcode from the Font menu (PDF417).
- 2) Select the desired font size (8.5).
- 3) Enter “Two-dimensional Codes Test: PDF417” in Wordpad.
- 4) Click the Print button in the toolbar to print.



www.zebra.com

Zebra Technologies International, LLC

333 Corporate Woods Parkway

Vernon Hills, Illinois 60061, 3109 USA

Phone: +1.847.634.6700

Toll-Free: +1.800.423.0422

Fax: +1.847.913.8766