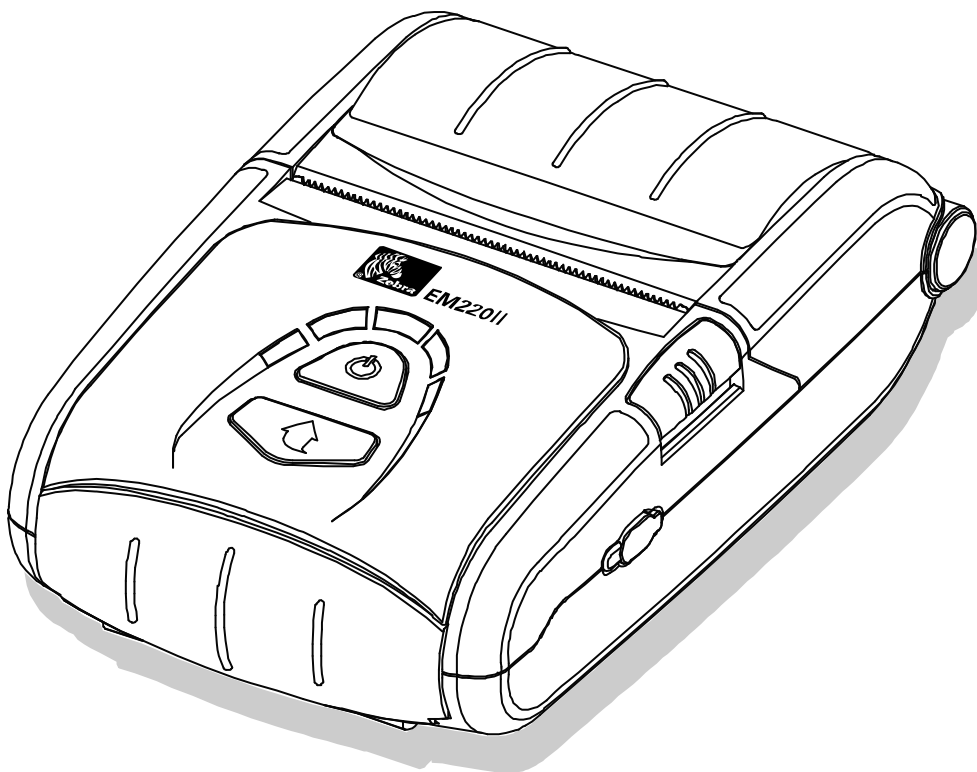




# EM220II

## OPOS Driver Setup Utility



**Table of Contents**

**1. Manual Information.....6**

**2. OPOS Driver Setting.....6**

    2-1 POSPrinter Registration .....7

    2-2 MSR Registration.....8

## ■ Proprietary Statements

This manual contains proprietary information of Zebra Technologies Corporation. It is intended solely for the information and use of parties operating and maintaining the equipment described herein. Such proprietary information may not be used, reproduced, or disclosed to any other parties for any other purpose without the expressed written permission of Zebra Technologies Corporation.

## Product Improvements

Since continuous product improvement is a policy of Zebra Technologies Corporation, all specifications and signs are subject to change without notice.

## FCC Compliance Statement

NOTE: This equipment has been tested and found to comply with the limits of a Class B digital device, pursuant to Part 15 of the FCC Rules. These limits are designed to provide reasonable protection against harmful interference in a residential installation. This equipment generates, uses and can radiate radio frequency energy and, if not installed and used in accordance with the instructions, may cause harmful interference to radio communications. However, there is no guarantee that interference will not occur in a particular installation. If this equipment does cause harmful interference to radio or television reception, which can be determined by turning the equipment off and on, the user is encouraged to try to correct the interference by one or more of the following measures:

- Reorient or relocate the receiving antenna.
- Increase the separation between the equipment and receiver.
- Connect the equipment into an outlet or circuit different from that to which the receiver is connected.
- Consult the dealer or an experienced radio/TV technician for help.

WARNING: Exposure to Radio Frequency radiation. To conform to FCC RF exposure requirements this device shall be used in accordance with the operating conditions and instructions listed in this manual.

NOTE: This unit was tested with shielded cables on the peripheral devices. Shielded cables must be used with the unit to insure compliance.

Changes or modifications to this unit not expressly approved by Zebra Technologies Corporation could void the user's authority to operate this equipment.

**Canadian Compliance Statement**

This Class B digital apparatus complies with Canadian ICES-003.

Cet appareil numérique de la classe B est conforme à la norme NMB-003 du Canada.

“IC:” before the equipment certification number signifies that the Industry Canada technical specifications were met. It does not guarantee that the certified product will operate to the user’s satisfaction.

**Liability Disclaimer**

Inasmuch as every effort has been made to supply accurate information in this manual, Zebra Technologies Corporation is not liable for any erroneous information or omissions. Zebra Technologies Corporation reserves the right to correct any such errors and disclaims liability resulting therefrom.

**No Liability for Consequential Damage**

In no event shall Zebra Technologies Corporation or anyone else involved in the creation, production, or delivery of the accompanying product (including hardware and software) be liable for any damages whatsoever (including, without limitation, damages for loss of business profits, business interruption, loss of business information, or other pecuniary loss) arising out of the use of or the results of use of or inability to use such product, even if Zebra Technologies Corporation has been advised of the possibility of such damages. Because some states do not allow the exclusion of liability for consequential or incidental damages, the above limitation may not apply to you.

## **Copyrights**

The copyrights in this manual and the label print engine described therein are owned by Zebra Technologies Corporation. Unauthorized reproduction of this manual or the software in the label print engine may result in imprisonment of up to one year and fines of up to \$10,000 (17 U.S.C.506). Copyright violators may be subject to civil liability.

This product may contain ZPL®, ZPL II®, and ZebraLink™ programs; Element Energy Equalizer® Circuit; E3®; and AGFA fonts. Software © ZIH Corp. All rights reserved worldwide.

ZebraLink and all product names and numbers are trademarks, and Zebra, the Zebra logo, ZPL, ZPL II, Element Energy Equalizer Circuit, and E3 Circuit are registered trademarks of ZIH Corp. All rights reserved worldwide.

Monotype®, Intellifont® and UFST® are trademarks of Monotype Imaging, Inc. registered in the United States Patent and Trademark Office and may be registered in certain jurisdictions.

Andy™, CG Palacio™, CG Century Schoolbook™, CG Triumvirate™, CG Times™, Monotype Kai™, Monotype Mincho™ and Monotype Sung™ are trademarks of Monotype Imaging, Inc. and may be registered in some jurisdictions.

HY Gothic Hangul™ is a trademark of Hanyang Systems, Inc.

Angsana™ is a trademark of Unity Progress Company (UPC) Limited.

Andale®, Arial®, Book Antiqua®, Corsiva®, Gill Sans®, Sorts® and Times New Roman® are trademarks of The Monotype Corporation registered in the United States Patent and Trademark Office and may be registered in certain jurisdictions.

Century Gothic™, Bookman Old Style™ and Century Schoolbook™ are trademarks of The Monotype Corporation and may be registered in certain jurisdictions.

HGP Gothic B is a trademark of the Ricoh company, Ltd. and may be registered in some jurisdictions.

Univers™ is a trademark of Heidelberger Druckmaschinen AG, which may be registered in certain jurisdictions, exclusively licensed through Linotype Library GmbH, a wholly owned subsidiary of Heidelberger Druckmaschinen AG.

Futura® is a trademark of Bauer Types SA registered in the United States Patent and Trademark Office and may be registered in some jurisdictions.

TrueType® is a trademark of Apple Computer, Inc. registered in the United States Patent and Trademark Office and may be registered in certain jurisdictions.

All other product names are the property of their respective owners.

All other brand names, product names, or trademarks belong to their respective holders.

©2006 ZIH Corp.

## 1. Manual Information

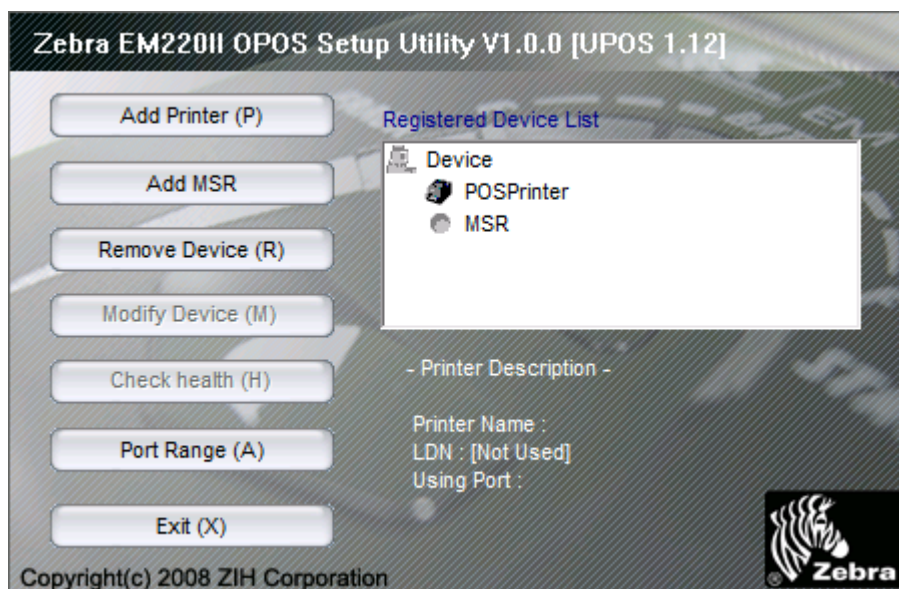
This is a manual about how to register and configure EM220II Printer with OPOS Driver.

Throughout this manual, “OLE for Retail POS” is called “OPOS”.

Throughout this manual, “Unified for Retail POS” is called “UPOS”.

## 2. OPOS Driver Setting

After OPOS Driver installation execute “EM220II OPOS Setup Utility” to register or configure POSPrinter, “EM220II OPOS Setup Utility” that is located in “Start>Program>Zebra EM220II OPOS Driver>EM220II OPOS Setup Utility”.



## 2-1 POSPrinter Registration

- 1) Click “Add Printer” button.
- 2) Set the communication environment of the connected printer and click “OK” button.

The screenshot shows a dialog box for configuring a printer. At the top, there are two text fields: "Device Name" containing "EM220II" and "Local Device Name(LDN)" which is empty. Below these is the "Port Settings" section. It includes a "Select Interface" row with radio buttons for "Serial" (selected), "Bluetooth", "USB", and "Ethernet". Under "Serial", there are several dropdown menus: "Port:" set to "COM1", "Baud Rate:" set to "9600", "Bit Length:" set to "8", "Parity:" set to "NONE", "Stop Bit(s):" set to "1", and "Flow Control:" set to "DTR/DSR". To the right of these are input fields for "Input Buffer" (4096), "Output Buffer" (4096), "Output Interval Time" (0), and "Input Sleep Time" (0). A "Check Health" button is located below the input fields. At the bottom of the dialog are "OK" and "Cancel" buttons. The copyright notice "Copyright(c) 2008 ZIH Corporation" is at the very bottom.

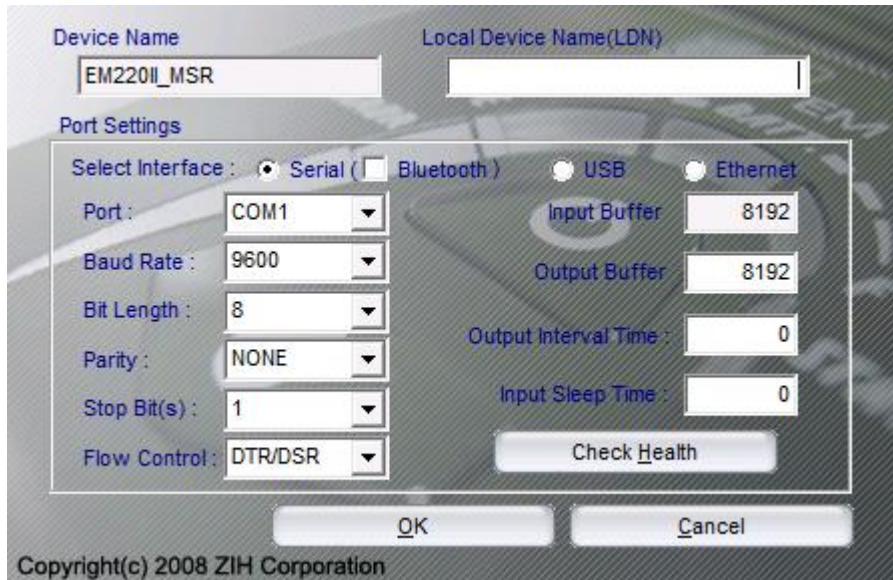
- 3) Click “Checkhealth” to see if the printer operates properly.

<POSPrinter CheckHealth Dialog>

The screenshot shows a window titled "Printer Check Health : - Interactive -EM220II". On the left, there is a "Print" button and a text area labeled "-- Print Result --". On the right, under the heading "Printer Status Property", it shows "Power State: Online" and two unchecked checkboxes: "Cover Open" and "Paper Empty". Below this, the following text is displayed: "ServiceObjectDescription: Zebra EM220II UPOS ServiceObject, Copyright(C)2008 ZIH Corp.", "ServiceObjectVersion: 1.12.5", "DeviceDescription: Zebra EM220II Printer", and "DeviceName: EM220II". An "Exit" button is located in the bottom right corner.

## 2-2 MSR Registration

- 1) Click “Add MSR” button
- 2) Select MSR model and Click “NEXT” button.

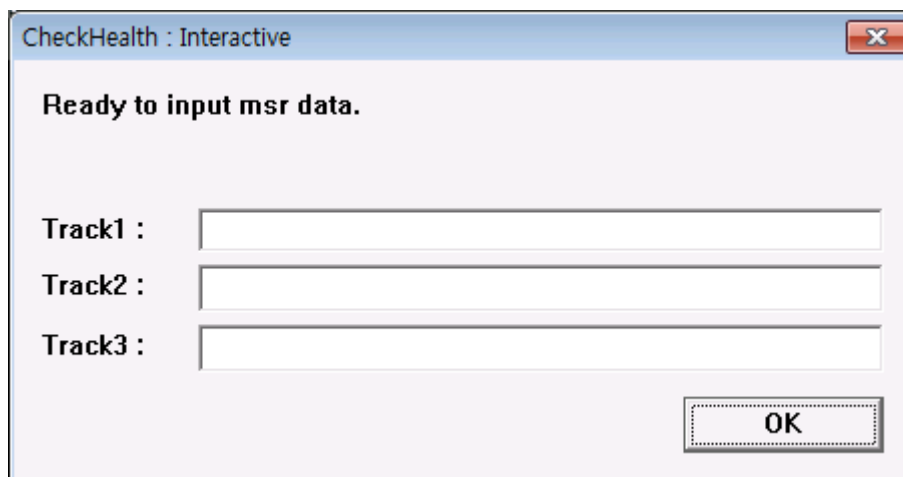


The dialog box for MSR registration contains the following fields and controls:

- Device Name:** Text box containing "EM220II\_MSR".
- Local Device Name(LDN):** Empty text box.
- Port Settings:**
  - Select Interface:** Radio buttons for Serial (selected), Bluetooth, USB, and Ethernet.
  - Port:** Dropdown menu showing "COM1".
  - Baud Rate:** Dropdown menu showing "9600".
  - Bit Length:** Dropdown menu showing "8".
  - Parity:** Dropdown menu showing "NONE".
  - Stop Bit(s):** Dropdown menu showing "1".
  - Flow Control:** Dropdown menu showing "DTR/DSR".
  - Input Buffer:** Text box showing "8192".
  - Output Buffer:** Text box showing "8192".
  - Output Interval Time:** Text box showing "0".
  - Input Sleep Time:** Text box showing "0".
  - Check Health:** Button.
- Buttons:** "OK" and "Cancel" buttons at the bottom.
- Copyright:** "Copyright(c) 2008 ZIH Corporation" at the bottom left.

- 3) Click “Checkhealth” to see if the MSR operates properly

<MSR CheckHealth Dialog >



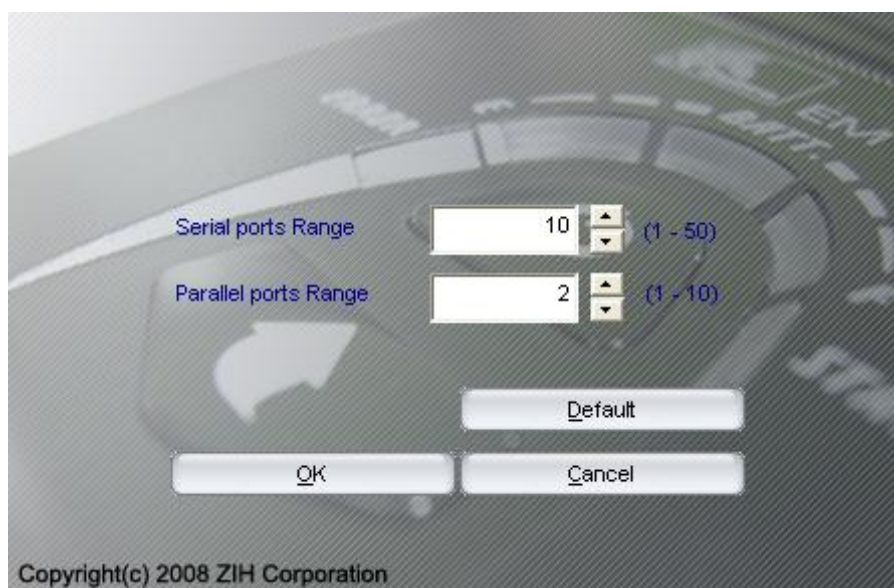
The "CheckHealth : Interactive" dialog box contains the following elements:

- Title Bar:** "CheckHealth : Interactive" with a close button.
- Text:** "Ready to input msr data."
- Input Fields:** Three text boxes labeled "Track1:", "Track2:", and "Track3:".
- Button:** "OK" button at the bottom right.



Item	Description
Logical Device Name (LDN) [Edit Box]	New Logical Device Names can be modified by typing the name in the box and then pressing the OK button.
Port [Drop List Combo Box]	Port setting.
Bits per second [Drop List Combo Box]	Baud rate setting for the COM port. This setting will be restricted according to the limitations of the device. If using parallel port, this control can not set and reference.
But Length [Drop List Combo Box]	Bit length setting for the COM port. This setting will be restricted according to the limitations of the device. If using parallel port, this control can not set and reference.
Parity Bits [Drop List Combo Box]	Parity setting for the COM port. This setting will be restricted according to the limitations of the device. If using parallel port, this control can not set and reference.
Stop Bits [Drop List Combo Box]	Stop bit setting for the COM port. This setting will be restricted according to the limitations of the device. If using parallel port, this control can not set and reference.
Handshake [Drop List Combo Box]	Handshake setting for the COM port. This setting will be restricted according to the limitations of the device. If using parallel port, this control can not set and reference.
Input Buffer (byte) [Edit Box]	Input buffer size for the COM port. Valid size must be from 32 to 8192. If using parallel port, this control can not set and reference.
Output Buffer (byte) [Edit Box]	Output buffer size for the COM and LPT port. Valid size must be from 32 to 4096.
Output Interval Time (msec) [Edit Box]	Sets the interval between retries (amount of time passed to the Win 32 API Sleep function) if there has been an error during output. Valid time value must be from 0 to 9999. For a slave device, this is disabled.
Input Sleep Time (msec) [Edit Box]	Sets an interval to be set (amount of time passed to the Win32 API Sleep function : not assistance) to cause the Device to sleep during input Valid time value must be from 0 to 99. For a slave device, this is disabled.
CheckHealth	Invoke the CheckHealth method for this device with Level = OPOS_CH_INTERACTIVE. This method inform status of printer.
Apply or OK [Button]	Save current settings and exit.
Cancel[Button]	Discard current settings and exit.

- \* if the system has more ports than the default port range of OPOS Driver Setup Utility, click “Port Range” button and set the port range.
- \* If you select the port that the system doesn’t have, the device won’t operate.





[www.zebra.com](http://www.zebra.com)

---

**Zebra Technologies International, LLC**

333 Corporate Woods Parkway  
Vernon Hills, Illinois 60061, 3109 USA  
Phone: +1.847.634.6700  
Toll-Free: +1.800.423.0422  
Fax: +1.847.913.8766

**Zebra Technologies Europe Limited**

Dukes Meadow  
Millboard Road  
Bourne End  
Buckinghamshire, SL8 5XF, UK  
Phone: +44 (0)1628 556000  
Fax: +44 (0)1628 556001