



EM220II Quad Charger Installation Guide

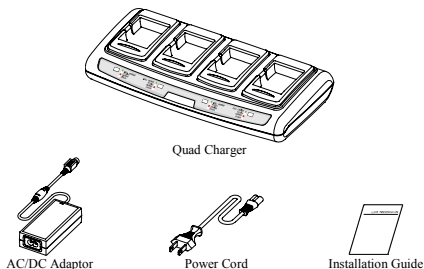
P1007752-034 (Rev.1.0)

EM220II Quad Charger

Information

This installation guide provides information required for product installation and use. The EM220II Quad charger offers simultaneous recharging of up to four EM220II printer batteries.

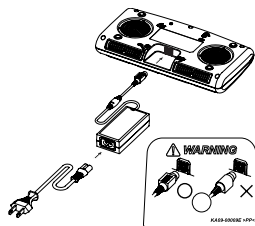
Components



Installation Precautions

1. Avoid placement under direct sunlight and/or locations subject to excessive heat.
2. Do not use or store in locations subject to high temperatures and/or humidity.
3. Do not use or store in dusty locations.
4. Do not install in unstable and/or non-level locations.
5. Subjecting the product to strong vibration and/or shock can cause damage.
6. Secure sufficient space in the installation area to facilitate easy usage.

Connecting the cables



1. Connect the power cord to the adaptor, and connect the adaptor to the power connector of the Quad Charger.
2. Plug the power cord into a power Outlet. Input power is 100 ~ 240VAC, 50/60Hz, 1.0A.
3. When the power is supplied, the yellow, green and red LED are on for three seconds and do the self-test.



WARNING

Use only designated AC/DC adaptor. (12VDC, 3A)



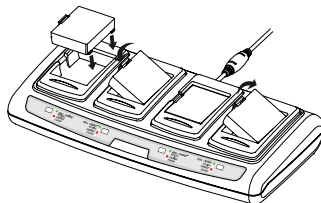
NOTE

LED	Self-Test
Yellow LED Blinking	Error Condition of Quad Charger

CAUTION

1. Initially, Quad Charger performs self test when power is on. When error occurs, Yellow LED will be blinking.
2. When Yellow LED is blinking continuously, remove the battery and check if alien substance is on the contact socket on Printer or Quad Charger. Then disconnect and connect power cord 4 to 5 times to check connection status.
3. Yellow LED is still blinking with above procedures, contact your local dealer.

Battery Charging



1. Fasten batteries via the battery hooks into the Quad Charger as shown above.
2. Push the battery in until a snapping sound is emitted.
3. Charging begins as soon as the battery is completely inserted. Batteries are charged to 8.4VDC, 0.8A.
4. Push the hook and pull up to extract the battery.



NOTE

Battery charging status descriptions are as follows.

LED	Charging Status	Charge Time
Red LED On	Charging	2.5 hours
Green LED Blinking	Over 80% Charged	
Green LED On	Fully Charged	
Red LED Blinking	Error Replace or Reinstall Battery	

CAUTION

1. If the red LED of the charger blinks, install the battery again.
2. If the red LED continues to blink despite several attempts (4 ~ 5 times) to install the battery, contact your local dealer.
3. The charging time may vary depending on the type of the charger or ambient temperature.

WEEE (Waste Electrical and Electric Equipment)



This marking shown on the product or its literature, indicates that it should not be disposed with other household wastes at the end of its working life. To prevent possible harm to the environment or human health from uncontrolled waste disposal, please separate this from other types of wastes and recycle it responsibly to promote the sustainable reuse of material resources. Household users should contact either the retailer where they purchased this product, or their local government office, for details of where and how they can take this item for environmentally safe recycling. Business users should contact their supplier and check the terms and conditions of the purchase contract. This product should not be mixed with other commercial wastes for disposal.

Zebra Technologies Corporation

- Web site <http://www.zebra.com>
- Zebra Technologies Corporation (Global/Americas Headquarters)
333 Corporate Woods Parkway, Vernon Hills, IL 60061-3109 USA
Tel: +1 847 634 6700 or +1 800 423 0442
- Zebra Technologies Europe Limited
Dukes Meadow, Millboard Road, Bourne End, Buckinghamshire, SL8 5XF, UK
Tel: +44 (0)1628 556000
- Zebra Technologies Asia Pacific, LLC
120 Robinson Road#06-01 Parakou BuildingSingapore 68913
Tel: +65 6858 0722
- Latin American Sales Office
9800 NW 41st StreetSuite 220Doral, FL 33178 USA
Tel: +1 305 558 8470