



ZQ110

OPOS Driver Setup Utility

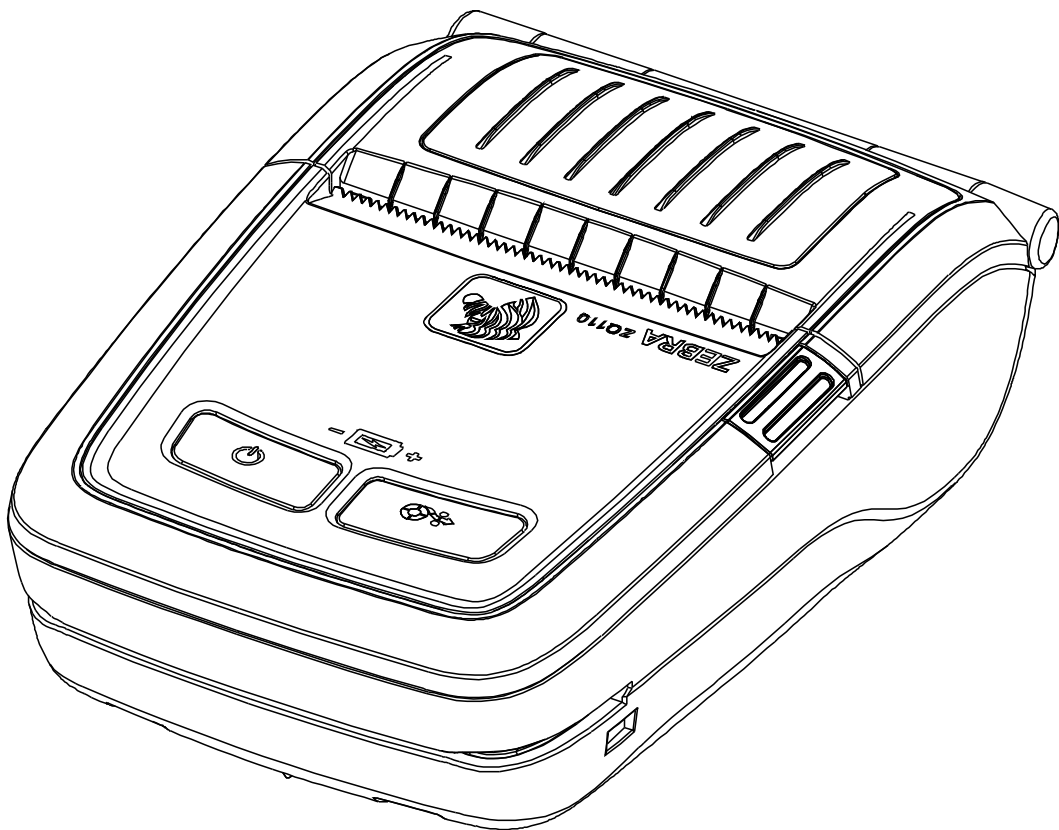


Table of Contents

1. Manual Information.....	6
2. OPOS Driver Setting.....	6
2-1 POSPrinter Registration	7
2-2 Magnetic Stripe Reader (MSR) Registration.....	8

■ Proprietary Statements

This manual contains proprietary information for Zebra Technologies Corporation. It is intended solely for the information and use of parties operating and maintaining the equipment described herein. Such proprietary information may not be used, reproduced, or disclosed to any other parties for any other purpose without the expressed written permission of Zebra Technologies Corporation.

Product Improvements

Since continuous product improvement is a policy of Zebra Technologies Corporation, all specifications and signs are subject to change without notice.

FCC Compliance Statement

NOTE: This equipment has been tested and found to comply with the limits of a Class B digital device, pursuant to Part 15 of the FCC Rules. These limits are designed to provide reasonable protection against harmful interference in a residential installation. This equipment generates, uses and can radiate radio frequency energy and, if not installed and used in accordance with the instructions, may cause harmful interference with radio communications. However, there is no guarantee that interference will not occur in a particular installation. If this equipment does cause harmful interference to radio or television reception, which can be determined by turning the equipment off and on, the user is encouraged to try to correct the interference by one or more of the following measures:

- Reorient or relocate the receiving antenna.
- Increase the separation between the equipment and the receiver.
- Connect the equipment to an outlet or circuit different from that to which the receiver is connected.
- Consult the dealer or an experienced radio/TV technician for help.

WARNING: Exposure to Radio Frequency radiation. To conform to FCC RF exposure requirements this device shall be used in accordance with the operating conditions and instructions listed in this manual.

NOTE: This unit was tested with shielded cables on the peripheral devices. Shielded cables must be used with the unit to ensure compliance.

Changes or modifications to this unit not expressly approved by Zebra Technologies Corporation could void the user's authority to operate this equipment.

Canadian Compliance Statement

This Class B digital apparatus complies with Canadian ICES-003.

Cet appareil numérique de la classe B est conforme à la norme NMB-003 du Canada.

“IC:” before the equipment certification number signifies that the Industry Canada technical specifications were met. It does not guarantee that the certified product will operate to the user’s satisfaction.

Liability Disclaimer

Inasmuch as every effort has been made to supply accurate information in this manual, Zebra Technologies Corporation is not liable for any erroneous information or omissions. Zebra Technologies Corporation reserves the right to correct any such errors and disclaims liability resulting therefrom.

No Liability for Consequential Damage

In no event shall Zebra Technologies Corporation or anyone else involved in the creation, production, or delivery of the accompanying product (including hardware and software) be liable for any damages whatsoever (including, without limitation, damages for loss of business profits, business interruption, loss of business information, or other pecuniary loss) arising out of the use of or the results of use of or inability to use such product, even if Zebra Technologies Corporation has been advised of the possibility of such damages. Because some states do not allow the exclusion of liability for consequential or incidental damages, the above limitation may not apply to you.

Copyrights

The copyrights in this manual and the label print engine described therein are owned by Zebra Technologies Corporation. Unauthorized reproduction of this manual or the software in the label print engine may result in imprisonment of up to one year and fines of up to \$10,000 (17 U.S.C.506). Copyright violators may be subject to civil liability.

This product may contain ZPL®, ZPL II®, and ZebraLink™ programs; Element Energy Equalizer® Circuit; E3®; and AGFA fonts. Software © ZIH Corp. All rights reserved worldwide.

ZebraLink and all product names and numbers are trademarks, and Zebra, the Zebra logo, ZPL, ZPL II, Element Energy Equalizer Circuit, and E3 Circuit are registered trademarks of ZIH Corp. All rights reserved worldwide.

Monotype®, Intellifont® and UFST® are trademarks of Monotype Imaging, Inc. registered in the United States Patent and Trademark Office and may be registered in certain jurisdictions.

Andy™, CG Palacio™, CG Century Schoolbook™, CG Triumvirate™, CG Times™, Monotype Kai™, Monotype Mincho™ and Monotype Sung™ are trademarks of Monotype Imaging, Inc. and may be registered in some jurisdictions.

HY Gothic Hangul™ is a trademark of Hanyang Systems, Inc.

Angsana™ is a trademark of Unity Progress Company (UPC) Limited.

Andale®, Arial®, Book Antiqua®, Corsiva®, Gill Sans®, Sorts® and Times New Roman® are trademarks of The Monotype Corporation registered in the United States Patent and Trademark Office and may be registered in certain jurisdictions.

Century Gothic™, Bookman Old Style™ and Century Schoolbook™ are trademarks of The Monotype Corporation and may be registered in certain jurisdictions.

HGP Gothic B™ is a trademark of the Ricoh company, Ltd. and may be registered in some jurisdictions.

Univers™ is a trademark of Heidelberger Druckmaschinen AG, which may be registered in certain jurisdictions, exclusively licensed through Linotype Library GmbH, a wholly owned subsidiary of Heidelberger Druckmaschinen AG.

Futura® is a trademark of Bauer Types SA registered in the United States Patent and Trademark Office and may be registered in some jurisdictions.

TrueType® is a trademark of Apple Computer, Inc. registered in the United States Patent and Trademark Office and may be registered in certain jurisdictions.

All other product names are the property of their respective owners.

All other brand names, product names, or trademarks belong to their respective holders.

©2014 ZIH Corp.

1. Manual Information

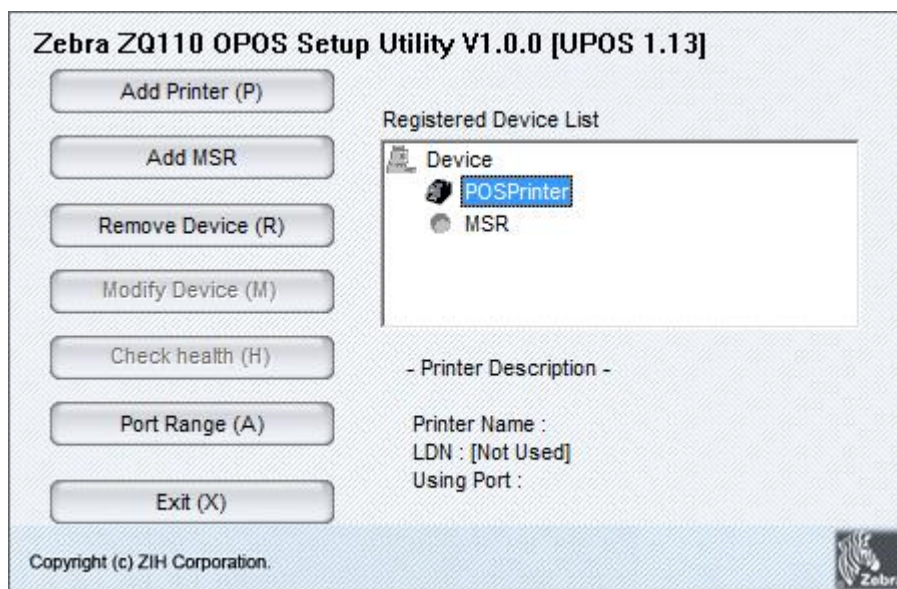
This is a manual about how to register and configure the ZQ110 printer with the OPOS Driver.

Throughout this manual, “OLE for Retail POS” is referred to as “OPOS” and “Unified for Retail POS” is referred to as “UPOS”.

2. OPOS Driver Setting

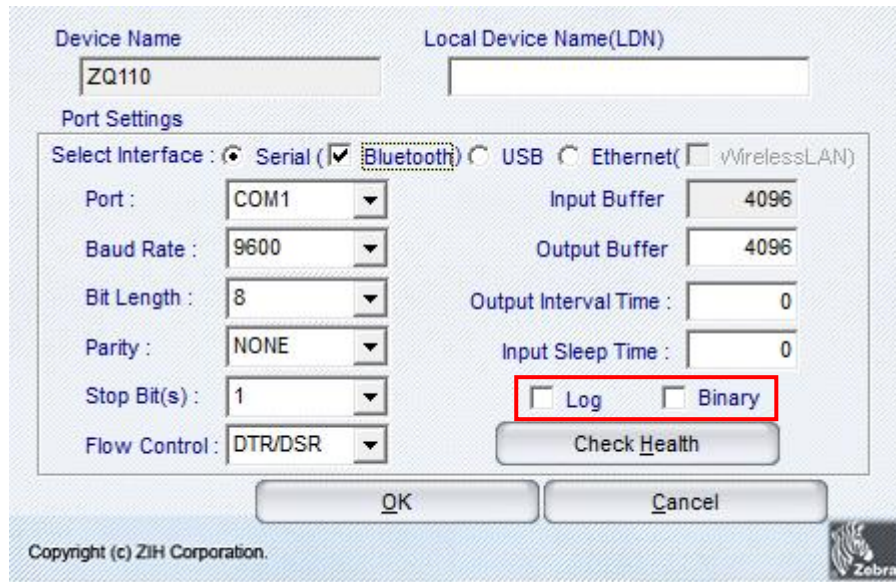
1. After OPOS Driver installation, execute “OPOS Setup Utility” to register or configure POSPrinter.
2. The “OPOS Setup Utility” is located in:

Start>Program>Zebra ZQ110 OPOS Driver>OPOS Setup Utility



2-1 POSPrinter Registration

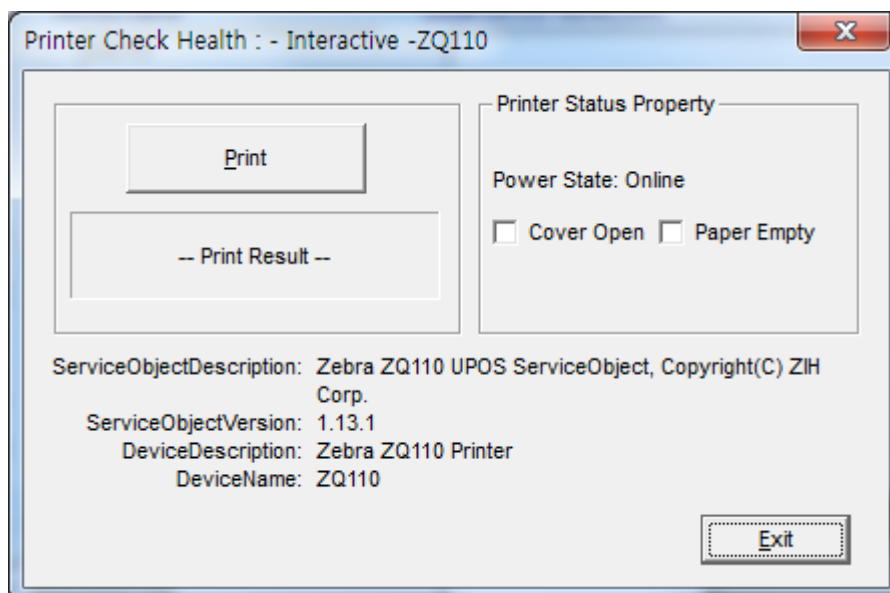
1. Click **Add Printer**.
2. Set the communication environment for the connected printer, and click **OK**.



* Please check the 'Log' and 'Binary' checkboxes only, if necessary .
Otherwise, the Hard Drive capacity will not contain other files due to the 'Log' and 'PRN' checkbox function.

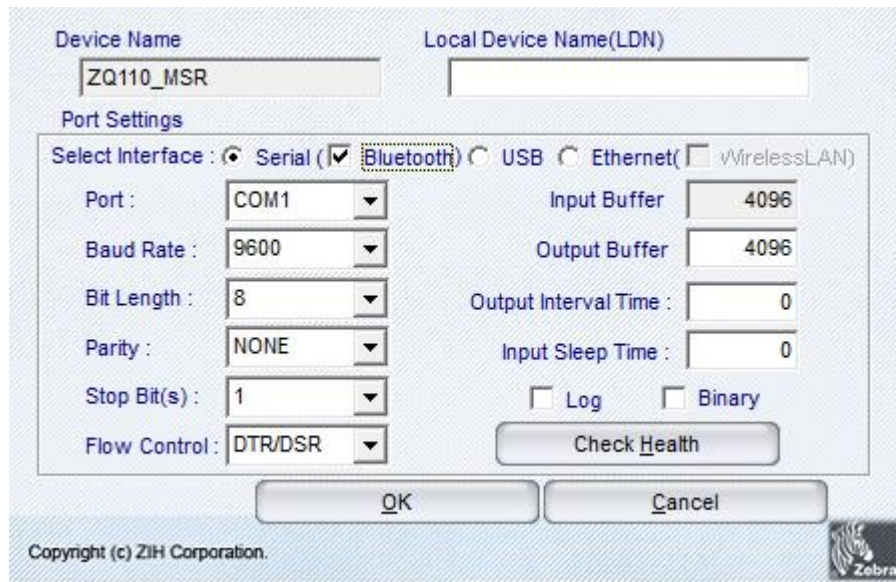
3. Click **Checkhealth** to see if the printer operates properly.

POSPrinter Check Health Dialog



2-2 Magnetic Stripe Reader (MSR) Registration

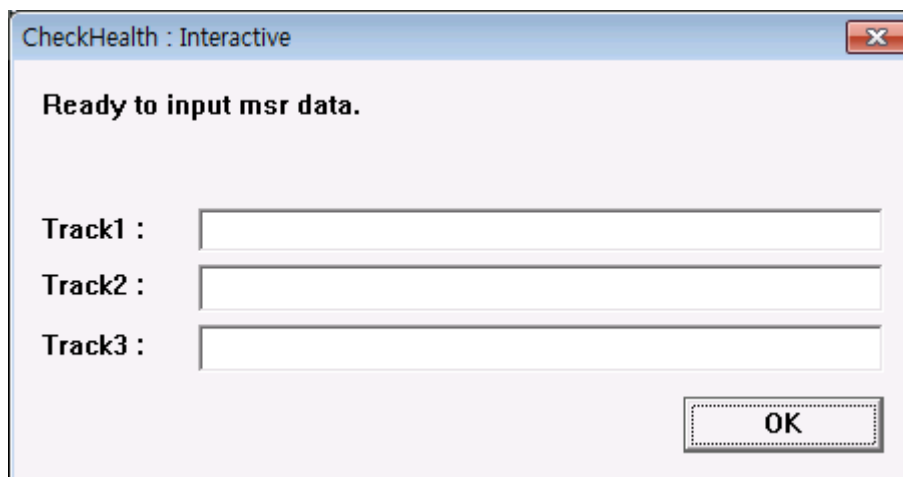
1. Click **Add MSR**.
2. Select the MSR model and click **Next**.



* Please check the 'Log' and 'Binary' checkboxes only if, necessary . Otherwise Hard Drive capacity will not contain other files due to the 'Log' and 'PRN' checkbox function.

3. Click **Checkhealth** to see if the MSR operates properly.

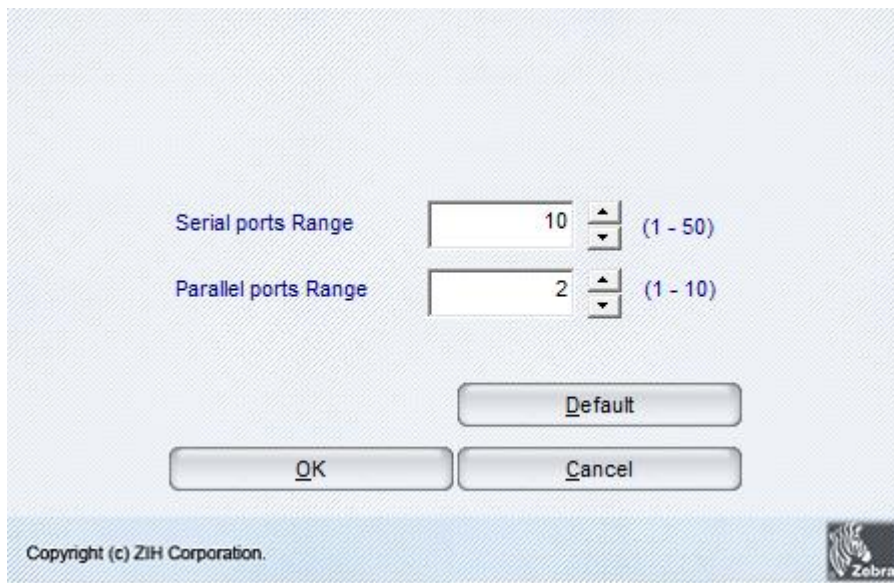
MSR CheckHealth Dialog



Item	Description
Logical Device Name (LDN) Edit Box	New Logical Device Names can be modified by typing the name in the box and then pressing OK .
Port Drop List Combo Box	Port setting.
Bits per second Drop List Combo Box	Baud rate setting for the COM port. This setting will be restricted according to the limitations of the device. If using a parallel port, this control cannot be set or referenced.
Bit Length Drop List Combo Box	Bit length setting for the COM port. This setting will be restricted according to the limitations of the device. If using a parallel port, this control cannot be set or referenced.
Parity Bits Drop List Combo Box	Parity setting for the COM port. This setting will be restricted according to the limitations of the device. If using a parallel port, this control cannot be set or referenced.
Stop Bits Drop List Combo Box	Stop bit setting for the COM port. This setting will be restricted according to the limitations of the device. If using a parallel port, this control cannot be set or referenced.
Handshake Drop List Combo Box	Handshake setting for the COM port. This setting will be restricted according to the limitations of the device. If using a parallel port, this control cannot be set or referenced.
Input Buffer (byte) Edit Box	Input buffer size for the COM port. Valid size must be from 32 to 8192. If using a parallel port, this control cannot be set or referenced.
Output Buffer (byte) Edit Box	Output buffer size for the COM and LPT port. Valid size must be from 32 to 4096.
Output Interval Time (msec) Edit Box	Sets the interval between retries (amount of time elapsed during the Win 32 API Sleep function) if there has been an error during output. Valid time value must be from 0 to 9999. For a slave device, this is disabled.
Input Sleep Time (msec) Edit Box	Sets an interval (amount of time elapsed during the Win32 API Sleep function : not assistance) to place the device in sleep mode during input. Valid time value must be from 0 to 99. For a slave device, this is disabled.
CheckHealth	Invoke the CheckHealth method for this device with Level = OPOS_CH_INTERACTIVE. This method provides the status of the printer.
Apply or OK	Save current settings and exit.
Cancel	Discard current settings and exit.

* if the system has more ports than the default port range of OPOS Driver Setup Utility, click **Port Range** and set the port range.

* If you select a port that is outside of the current range, the device will not operate.





www.zebra.com

Zebra Technologies International, LLC

475 Half Day Road
Suite 500, Lincolnshire
Illinois 60069 USA
Phone: +1.847.634.6700
Toll-Free: +1.800.230.9494
Fax: +1.847.913.8766

Zebra Technologies Europe Limited

Dukes Meadow
Millboard Road
Bourne End
Buckinghamshire, SL8 5XF, UK
Phone: +44 (0)1628 556000
Fax: +44 (0)1628 556001