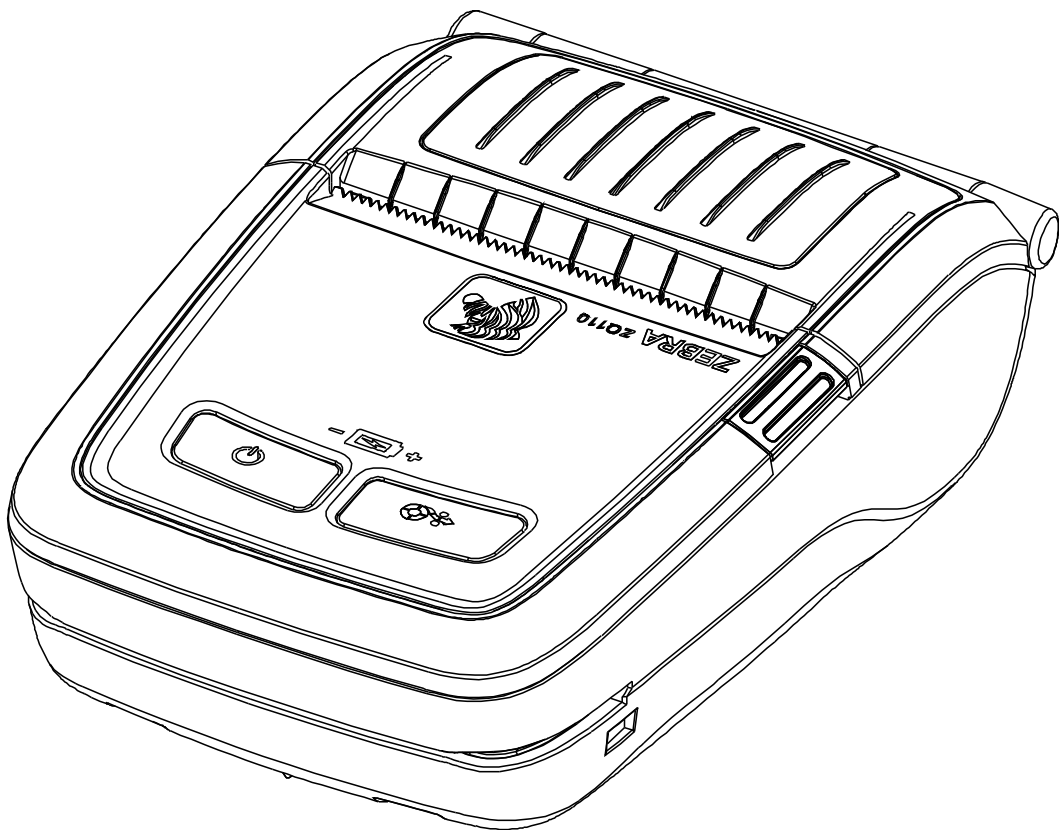




# ZQ110

---

## Mobile Printer Windows Driver Manual



# Table of Contents

<b>1. Manual Information</b> .....	<b>6</b>
<b>2. Operating System (OS) Environment</b> .....	<b>6</b>
<b>3. Windows Driver Preparation</b> .....	<b>6</b>
<b>4. Windows Driver Installation</b> .....	<b>7</b>
4-1 Installing on Windows XP / Server 2003.....	7
4-1-1 Via Bluetooth.....	7
4-1-2 Via USB Port.....	9
4-1-3 Via WLAN Port.....	11
4-2 Installing on Windows VISTA / Sever 2008 / 7 / 8.....	14
4-2-1 Via Bluetooth.....	14
4-2-2 Via USB Port.....	16
4-2-3 Via WLAN Port.....	18
<b>5. Windows Driver Settings</b> .....	<b>21</b>
5-1 Paper.....	21
5-1-1 Paper Size.....	22
5-1-2 Paper Type.....	23
5-1-3 Copies.....	23
5-2 Document Settings.....	24
5-2-1 Send Commands.....	25
5-2-2 Line Feed.....	25
5-3 Other Settings.....	26
5-3-1 Graphic Printing.....	26
5-3-2 Bluetooth Stack for Windows.....	26
<b>6. Windows Driver Specifications</b> .....	<b>27</b>
6-1 Fonts.....	27
6-2 Special Functions.....	29
6-3 Barcodes.....	30
6-4 Two-Dimensional Barcodes.....	31
<b>7. Use of Windows Driver</b> .....	<b>32</b>
7-1 Use of Visual Basic.....	32
7-1-1 Windows Driver Selection.....	32
7-1-2 Test Printing.....	33
7-1-3 Barcode Printing.....	33
7-1-4 Two-Dimensional Barcode Printing.....	33
7-2 Use of WordPad.....	34
7-2-1 WordPad Environment Settings.....	34
7-2-2 Text Printing.....	34
7-2-3 Barcode Printing.....	35
7-2-4 Two-Dimensional Barcode Printing.....	36

## ■ Proprietary Statements

This manual contains proprietary information for Zebra Technologies Corporation. It is intended solely for the information and use of parties operating and maintaining the equipment described herein. Such proprietary information may not be used, reproduced, or disclosed to any other parties for any other purpose without the expressed written permission of Zebra Technologies Corporation.

### Product Improvements

Since continuous product improvement is a policy of Zebra Technologies Corporation, all specifications and signs are subject to change without notice.

### FCC Compliance Statement

NOTE: This equipment has been tested and found to comply with the limits of a Class B digital device, pursuant to Part 15 of the FCC Rules. These limits are designed to provide reasonable protection against harmful interference in a residential installation. This equipment generates, uses and can radiate radio frequency energy and, if not installed and used in accordance with the instructions, may cause harmful interference with radio communications. However, there is no guarantee that interference will not occur in a particular installation. If this equipment does cause harmful interference to radio or television reception, which can be determined by turning the equipment off and on, the user is encouraged to try to correct the interference by one or more of the following measures:

- Reorient or relocate the receiving antenna.
- Increase the separation between the equipment and the receiver.
- Connect the equipment to an outlet or circuit different from that to which the receiver is connected.
- Consult the dealer or an experienced radio/TV technician for help.

WARNING: Exposure to Radio Frequency radiation. To conform to FCC RF exposure requirements this device shall be used in accordance with the operating conditions and instructions listed in this manual.

NOTE: This unit was tested with shielded cables on the peripheral devices. Shielded cables must be used with the unit to ensure compliance.

Changes or modifications to this unit not expressly approved by Zebra Technologies Corporation could void the user's authority to operate this equipment.

**Canadian Compliance Statement**

This Class B digital apparatus complies with Canadian ICES-003.

Cet appareil numérique de la classe B est conforme à la norme NMB-003 du Canada.

“IC:” before the equipment certification number signifies that the Industry Canada technical specifications were met. It does not guarantee that the certified product will operate to the user’s satisfaction.

**Liability Disclaimer**

Inasmuch as every effort has been made to supply accurate information in this manual, Zebra Technologies Corporation is not liable for any erroneous information or omissions. Zebra Technologies Corporation reserves the right to correct any such errors and disclaims liability resulting therefrom.

**No Liability for Consequential Damage**

In no event shall Zebra Technologies Corporation or anyone else involved in the creation, production, or delivery of the accompanying product (including hardware and software) be liable for any damages whatsoever (including, without limitation, damages for loss of business profits, business interruption, loss of business information, or other pecuniary loss) arising out of the use of or the results of use of or inability to use such product, even if Zebra Technologies Corporation has been advised of the possibility of such damages. Because some states do not allow the exclusion of liability for consequential or incidental damages, the above limitation may not apply to you.

**Copyrights**

The copyrights in this manual and the label print engine described therein are owned by Zebra Technologies Corporation. Unauthorized reproduction of this manual or the software in the label print engine may result in imprisonment of up to one year and fines of up to \$10,000 (17 U.S.C.506). Copyright violators may be subject to civil liability.

This product may contain ZPL®, ZPL II®, and ZebraLink™ programs; Element Energy Equalizer® Circuit; E3®; and AGFA fonts. Software © ZIH Corp. All rights reserved worldwide.

ZebraLink and all product names and numbers are trademarks, and Zebra, the Zebra logo, ZPL, ZPL II, Element Energy Equalizer Circuit, and E3 Circuit are registered trademarks of ZIH Corp. All rights reserved worldwide.

Monotype®, Intellifont® and UFST® are trademarks of Monotype Imaging, Inc. registered in the United States Patent and Trademark Office and may be registered in certain jurisdictions.

Andy™, CG Palacio™, CG Century Schoolbook™, CG Triumvirate™, CG Times™, Monotype Kai™, Monotype Mincho™ and Monotype Sung™ are trademarks of Monotype Imaging, Inc. and may be registered in some jurisdictions.

HY Gothic Hangul™ is a trademark of Hanyang Systems, Inc.

Angsana™ is a trademark of Unity Progress Company (UPC) Limited.

Andale®, Arial®, Book Antiqua®, Corsiva®, Gill Sans®, Sorts® and Times New Roman® are trademarks of The Monotype Corporation registered in the United States Patent and Trademark Office and may be registered in certain jurisdictions.

Century Gothic™, Bookman Old Style™ and Century Schoolbook™ are trademarks of The Monotype Corporation and may be registered in certain jurisdictions.

HGP Gothic B™ is a trademark of the Ricoh company, Ltd. and may be registered in some jurisdictions.

Univers™ is a trademark of Heidelberger Druckmaschinen AG, which may be registered in certain jurisdictions, exclusively licensed through Linotype Library GmbH, a wholly owned subsidiary of Heidelberger Druckmaschinen AG.

Futura® is a trademark of Bauer Types SA registered in the United States Patent and Trademark Office and may be registered in some jurisdictions.

TrueType® is a trademark of Apple Computer, Inc. registered in the United States Patent and Trademark Office and may be registered in certain jurisdictions.

All other product names are the property of their respective owners.

All other brand names, product names, or trademarks belong to their respective holders.

©2014 ZIH Corp.

## **1. Manual Information**

This Windows® Driver Installation Manual provides information on installation, detailed specifications, and usage of the printer's Windows Driver according to PC operating system (OS).

## **2. Operating System (OS) Environment**

The following operating systems are supported for usage.

- Microsoft® Windows XP (32bit/64bit)
- Microsoft Windows Server 2003 (32bit/64bit)
- Microsoft Windows Embedded For Point Of Service.
- Microsoft Windows VISTA (32bit/64bit)
- Microsoft Windows Server 2008 (32bit/64bit)
- Microsoft Windows Server 2008R2 (64bit)
- Microsoft Windows 7 (32bit/64bit)
- Microsoft Windows 8 (32bit/64bit)
- Microsoft Windows Server 2012 (64bit)

If “.NET Framework 3.5 SP1” is already installed on Windows XP or Windows 2003 Server the warning message box may appear while installing. We recommend you to install the hotfix. Visit at <http://www.microsoft.com/en-us/download/details.aspx?id=18127>

## **3. Windows Driver Preparation**

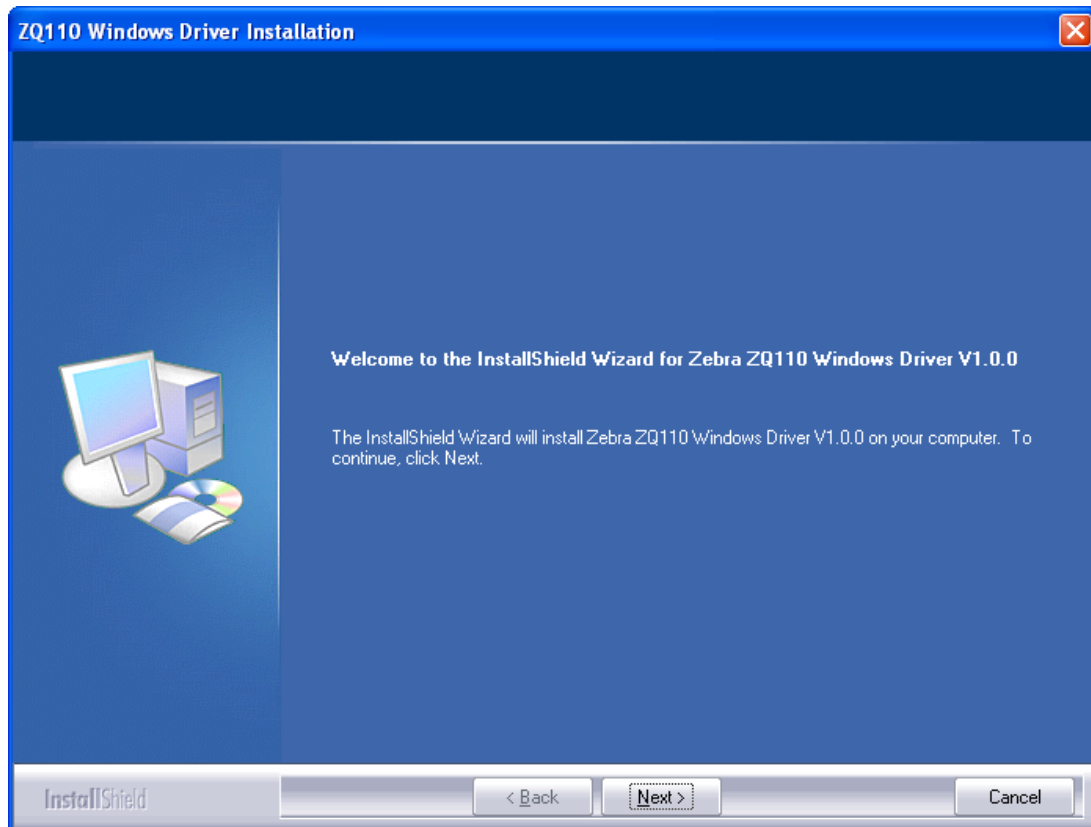
The Windows Driver is included in the enclosed CD, and can also be downloaded from the Zebra website. (<http://www.zebra.com/>)

## 4. Windows Driver Installation

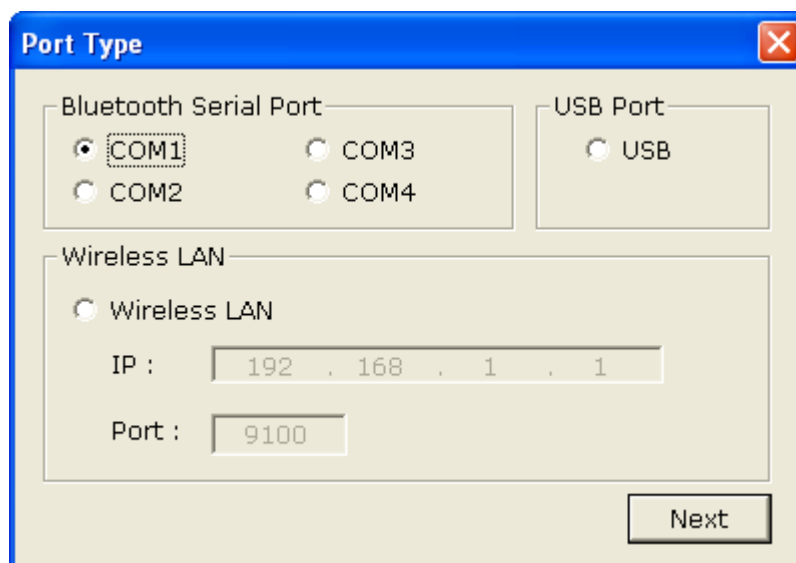
### 4-1 Installing on Windows XP / Server 2003

#### 4-1-1 Via Bluetooth

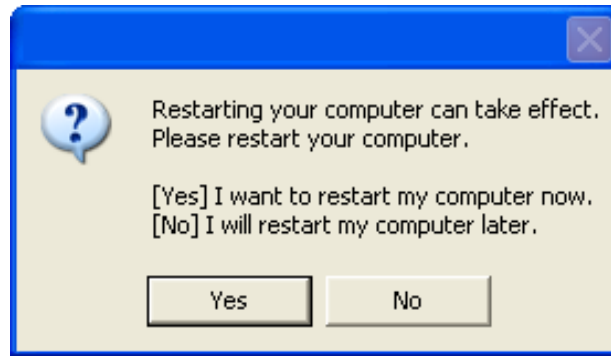
- 1) Double-click the Windows Driver installation file.
- 2) Click **Next**.



- 3) Select a COM port to be used and then click **Next**.



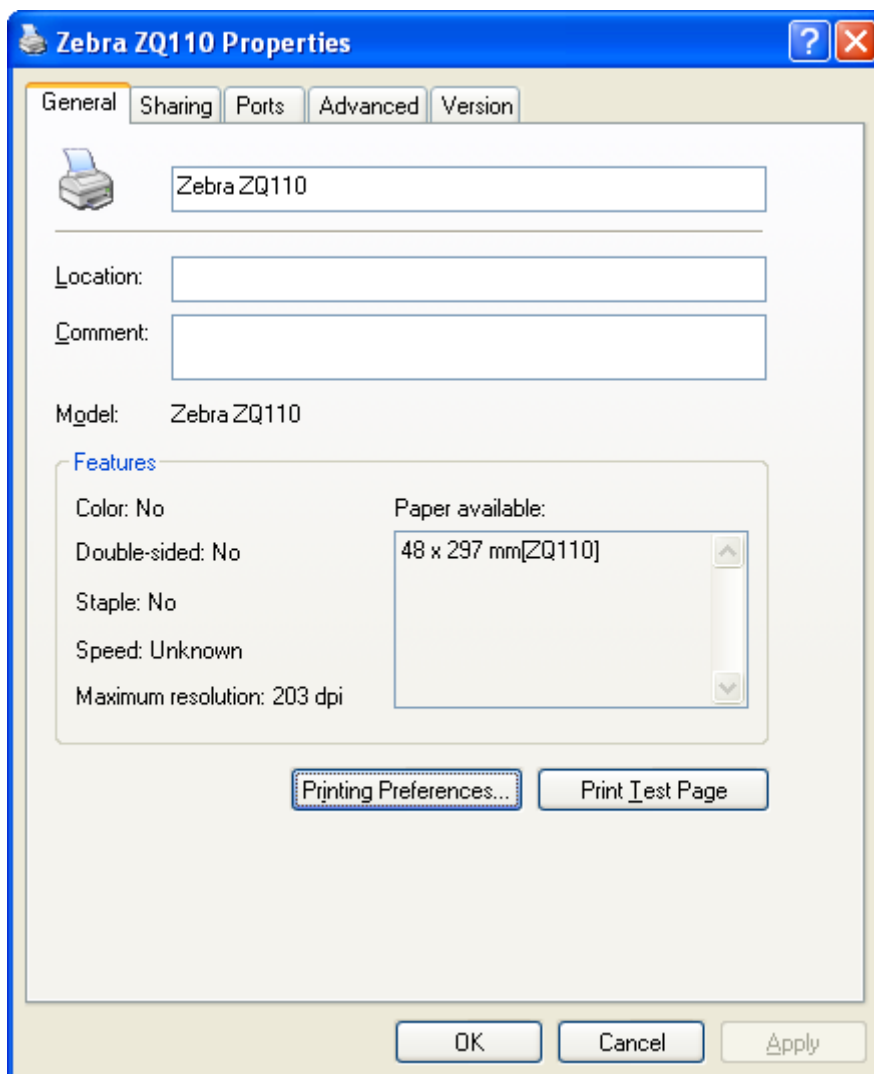
4) Click **Yes** to reboot the PC.



5) Open the printer properties window in the Windows OS.

※ Control Panel – Printers and Faxes.

6) Click **Print Test Page** and check printing status.

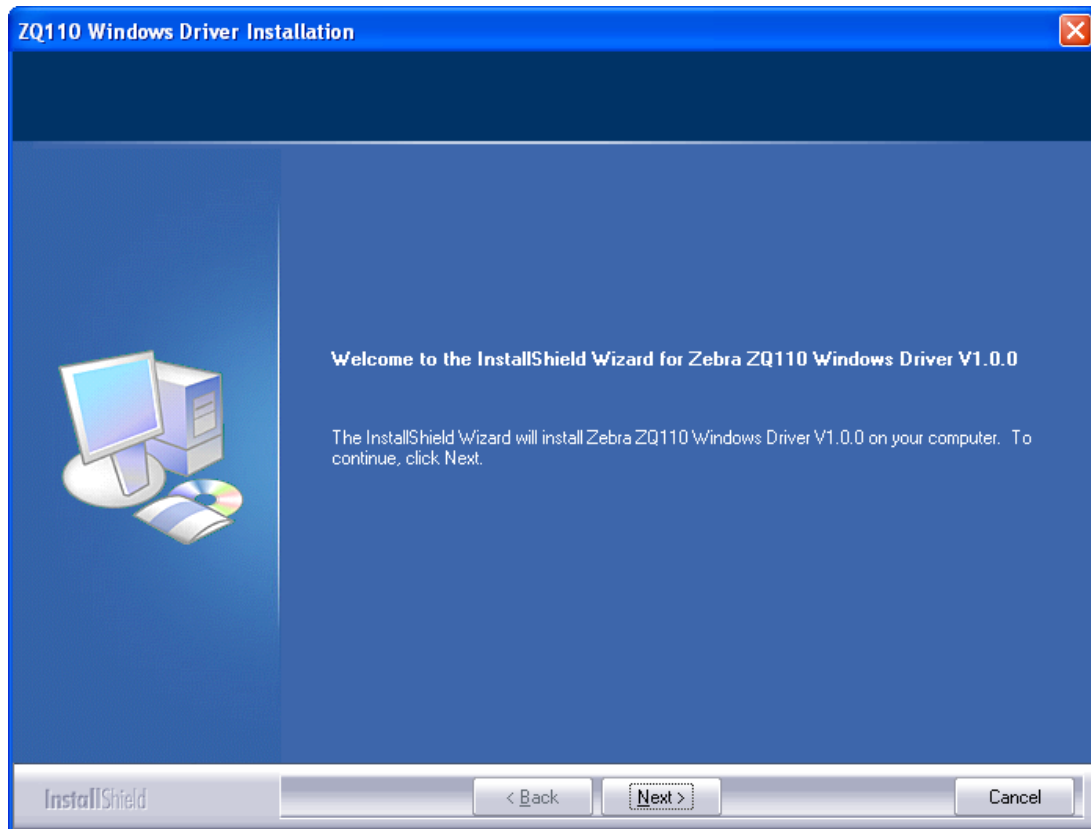


Proper installation of the driver is indicated if the test page is printed normally.

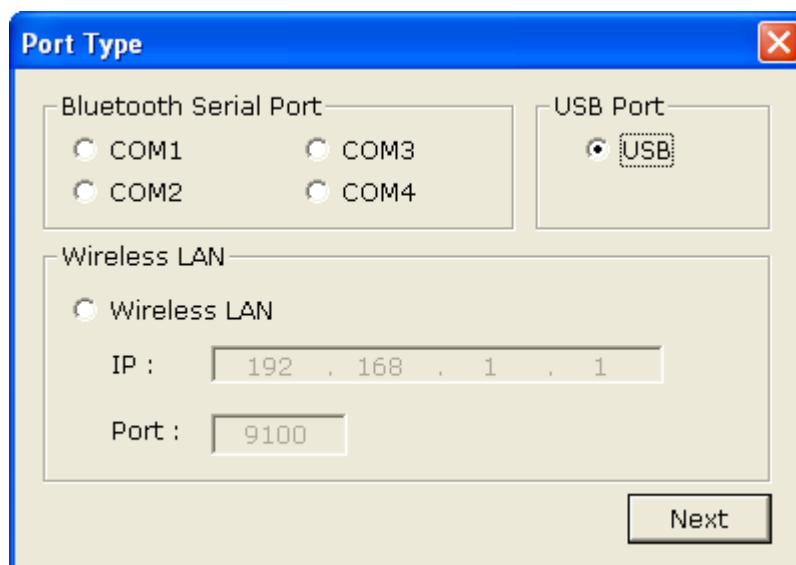


**4-1-2 Via USB Port**

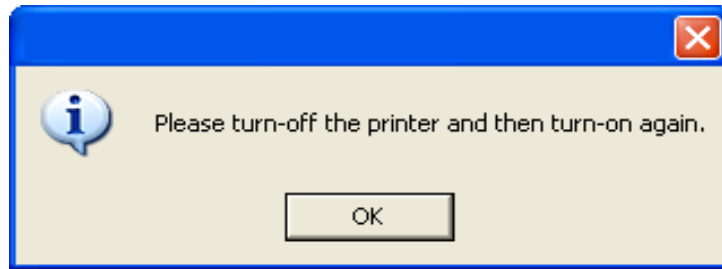
- 1) Double-click the Windows Driver installation file.
- 2) Click **Next**.



- 3) Select **USB** and then click **Next**.



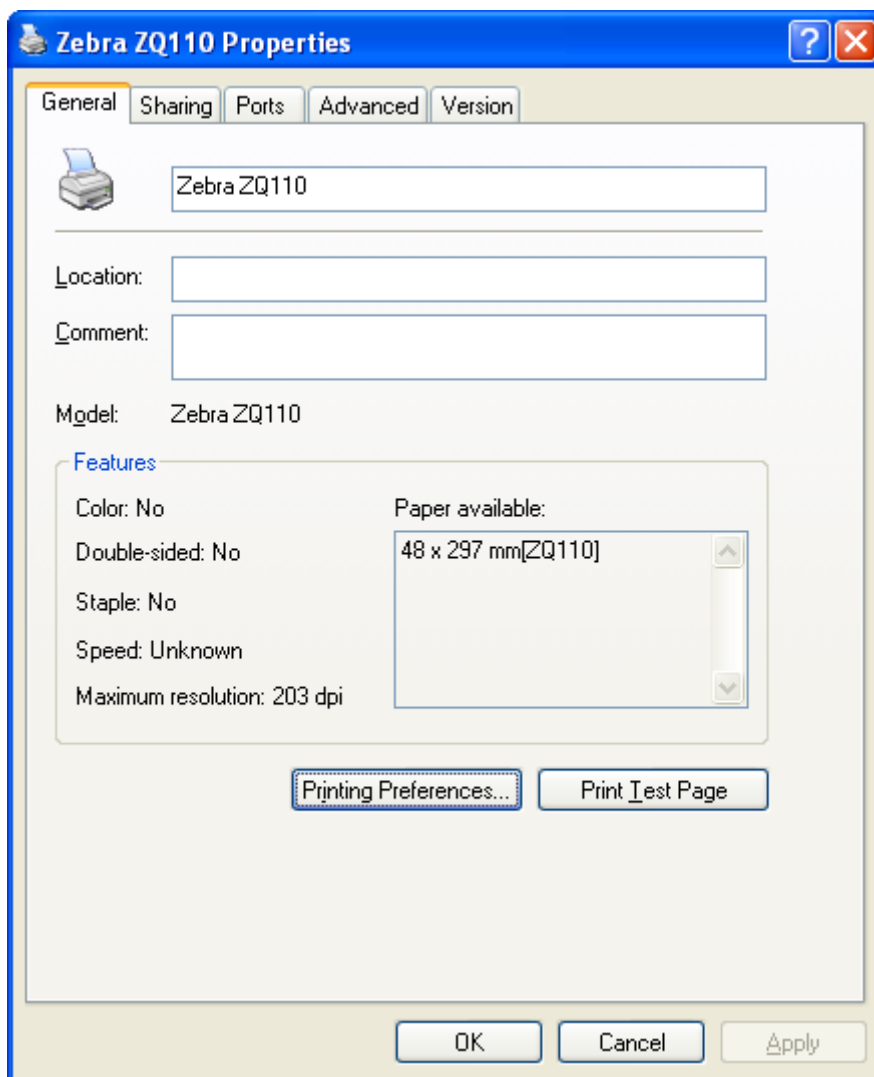
4) Click **OK**.



5) Turn off the printer and then turn it on. The printer driver will be installed automatically.

6) Open the printer properties window in the Windows OS.  
※ Control Panel – Printers and Faxes.

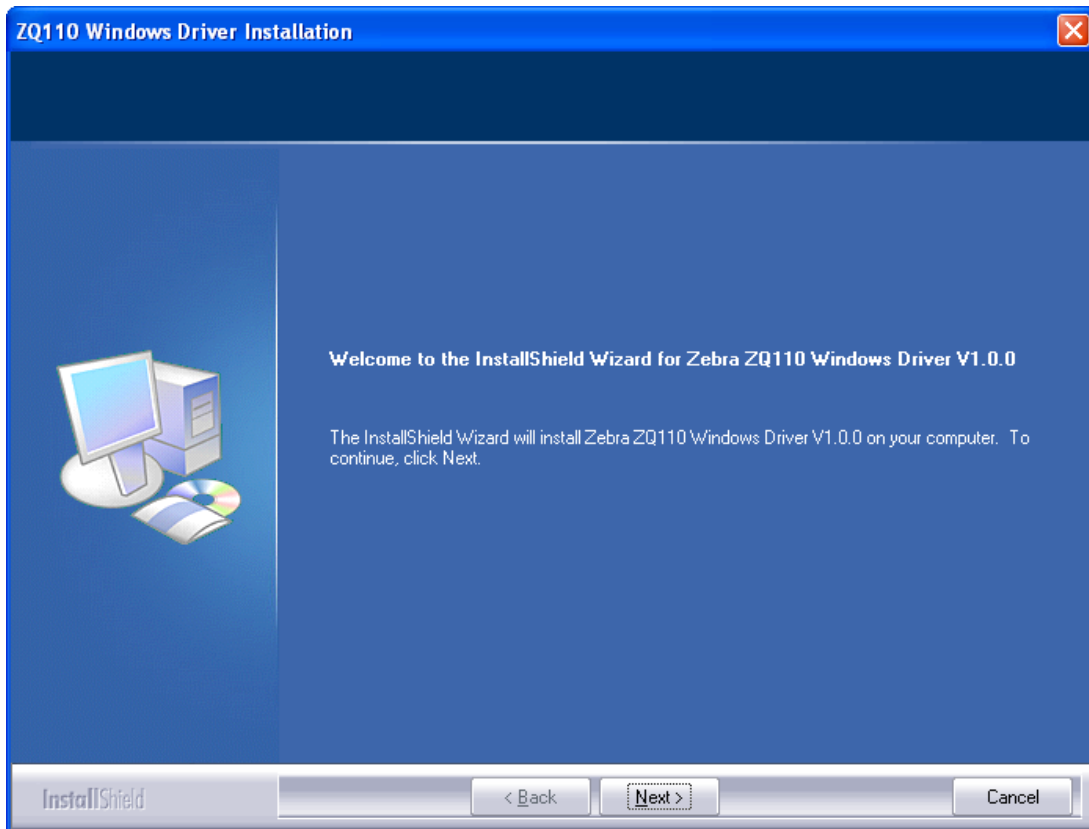
7) Click **Print Test Page** and check printing status.



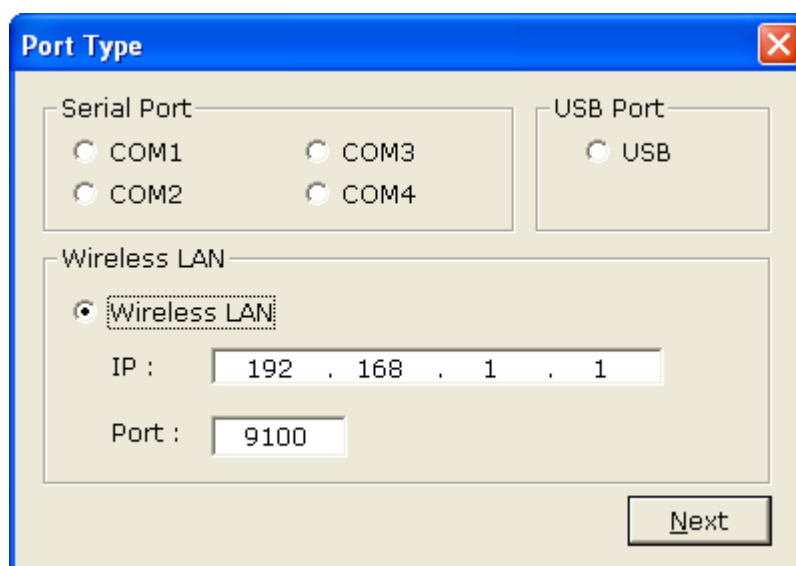
Proper installation of the driver is indicated if the test page is printed normally.

**4-1-3 Via WLAN Port**

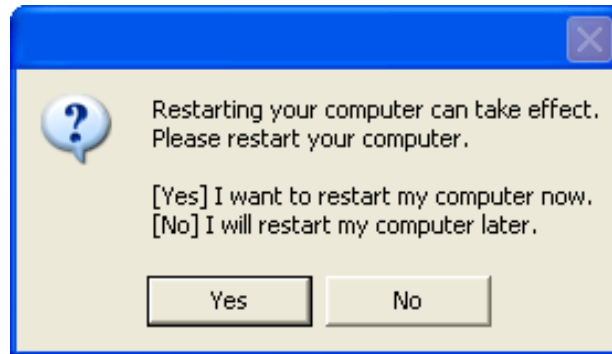
- 1) Double-click the Windows Driver installation file.
- 2) Click **Next**.



- 3) Select **Wireless LAN**.
- 4) Enter the IP address and port number, and then click **Next**.



5) Click **Yes** to reboot the PC.



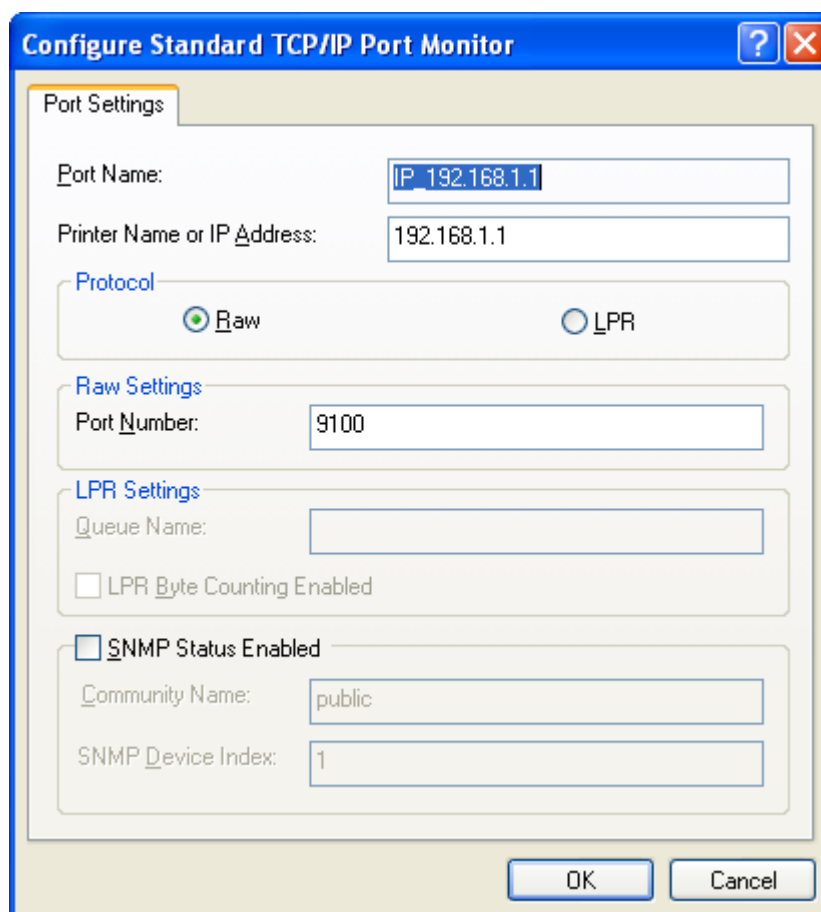
6) Open the printer properties window in the Windows OS.

※ Control Panel – Printers and Faxes.

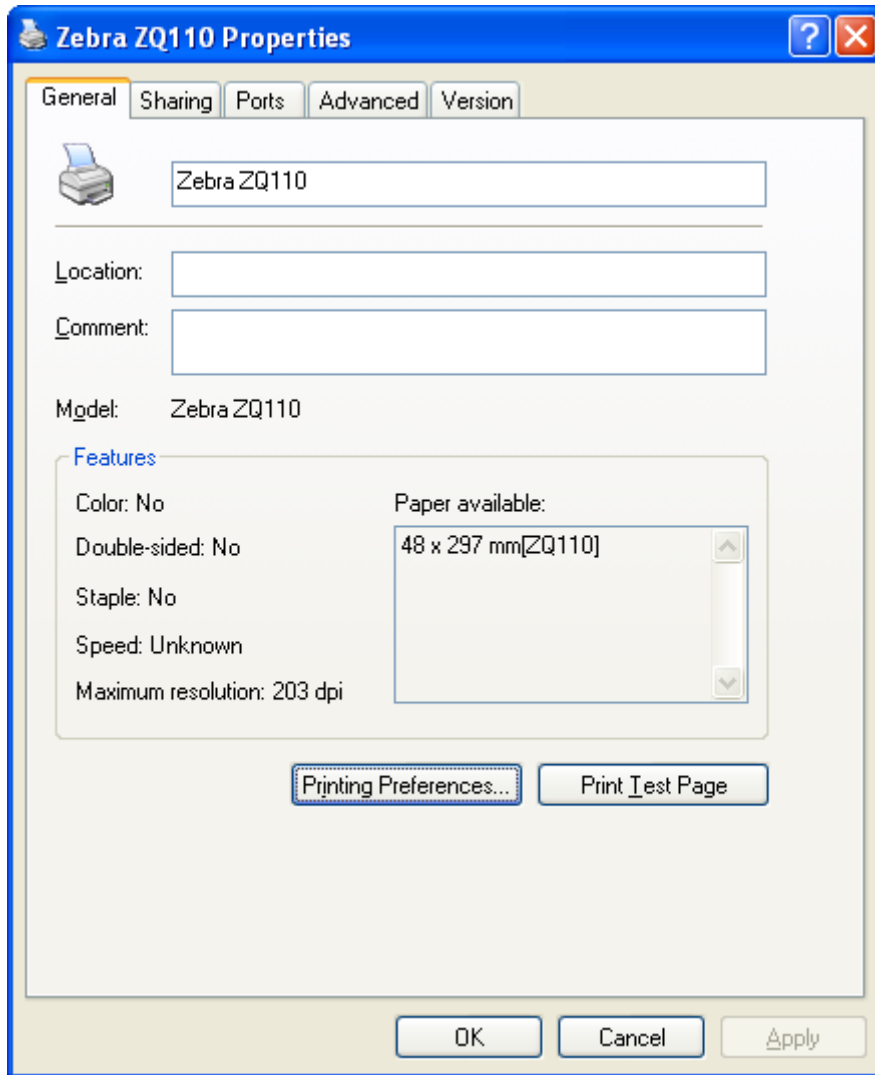
7) In the **Ports** tab, click the **Configure Port....**

8) Match the communication settings to those of the printer.

(The communication settings of the printer can be performed by conducting a self-test.)



9) Click **Print Test Page** and check printing status.

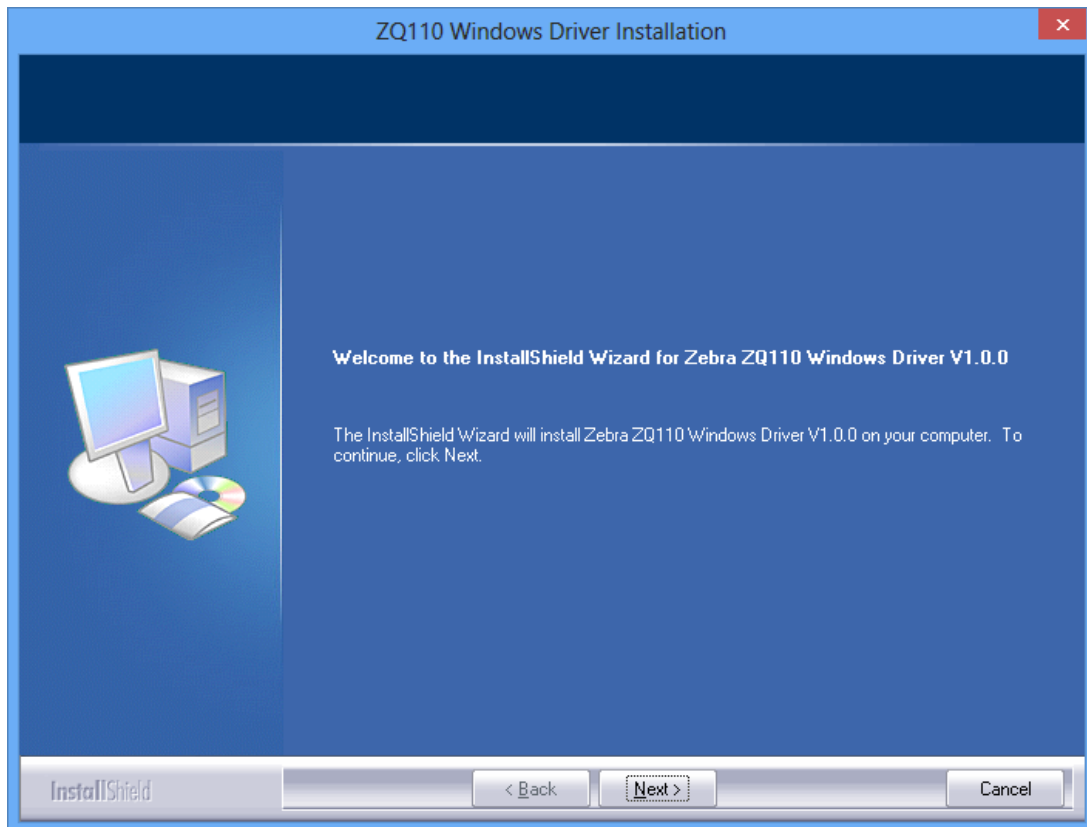


Proper installation of the driver is indicated if the test page is printed normally.

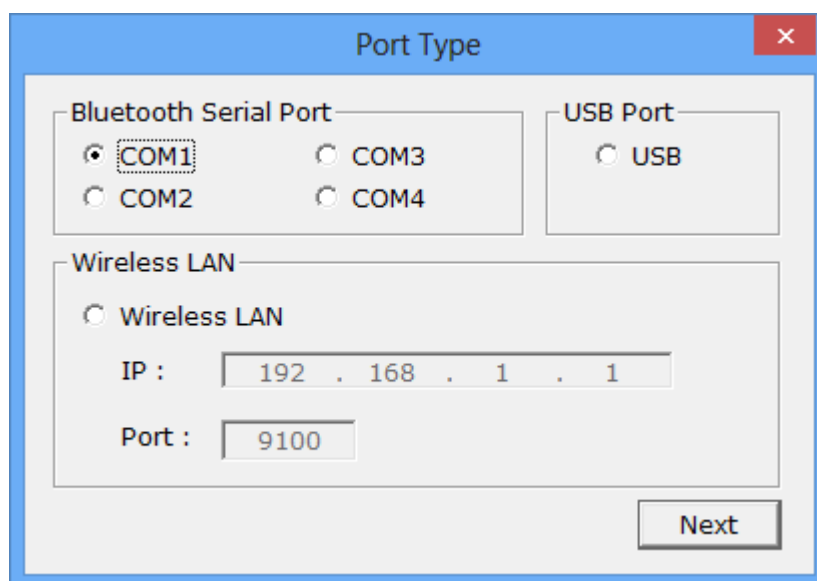
**4-2 Installing on Windows VISTA / Sever 2008 / 7 / 8**

**4-2-1 Via Bluetooth**

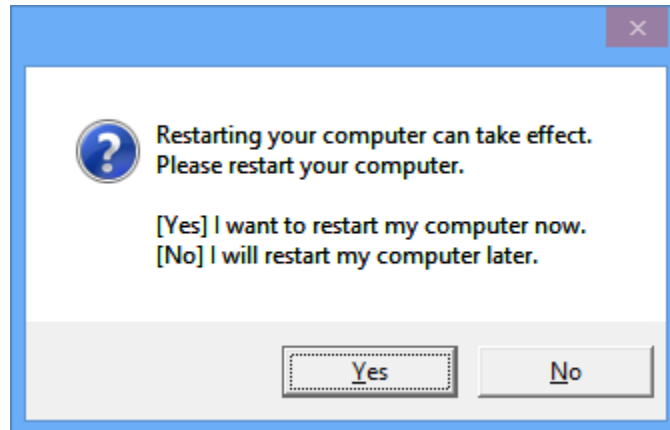
- 1) Double-click the Windows Driver installation file.
- 2) Click **Next**.



- 3) Select a COM port to be used and then click **Next**.

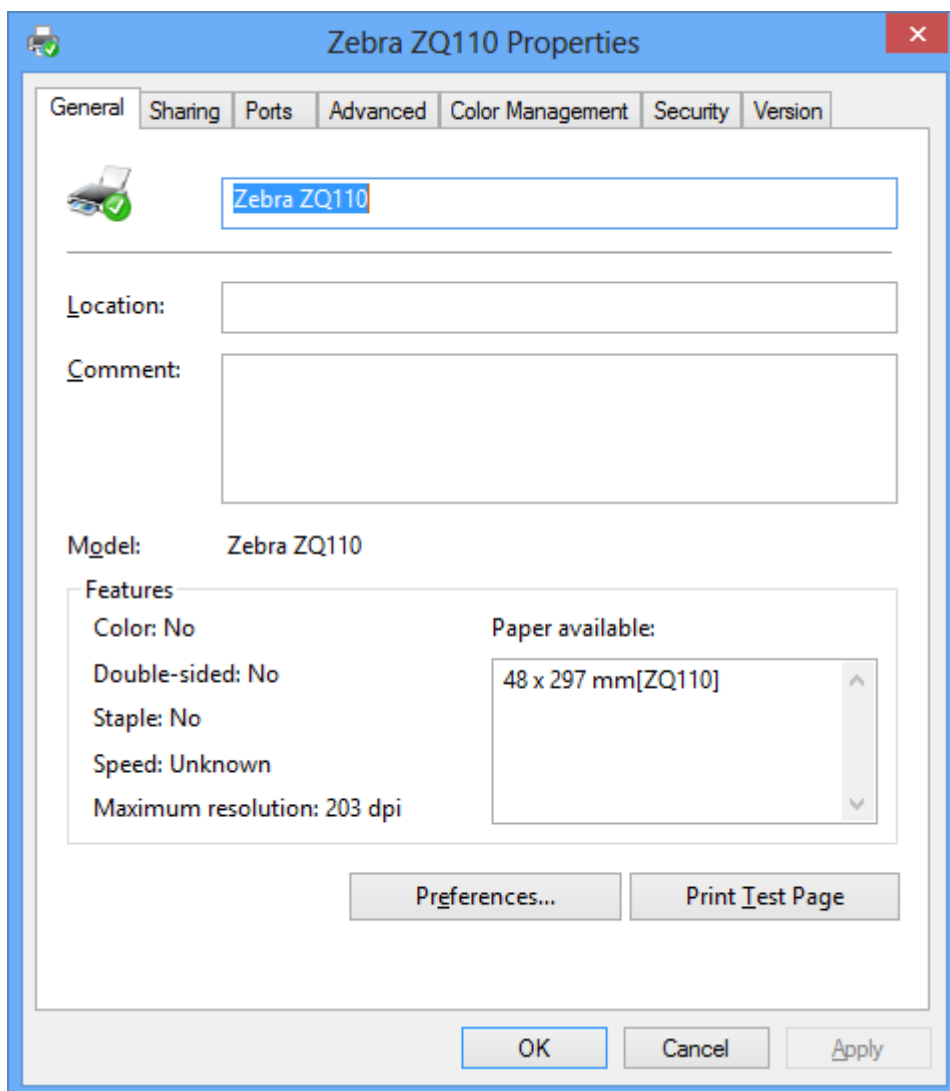


4) Click **Yes** to reboot the PC.



5) Open the printer properties window in the Windows OS.  
※ Control Panel – Hardware and Sound – Device and Printers.

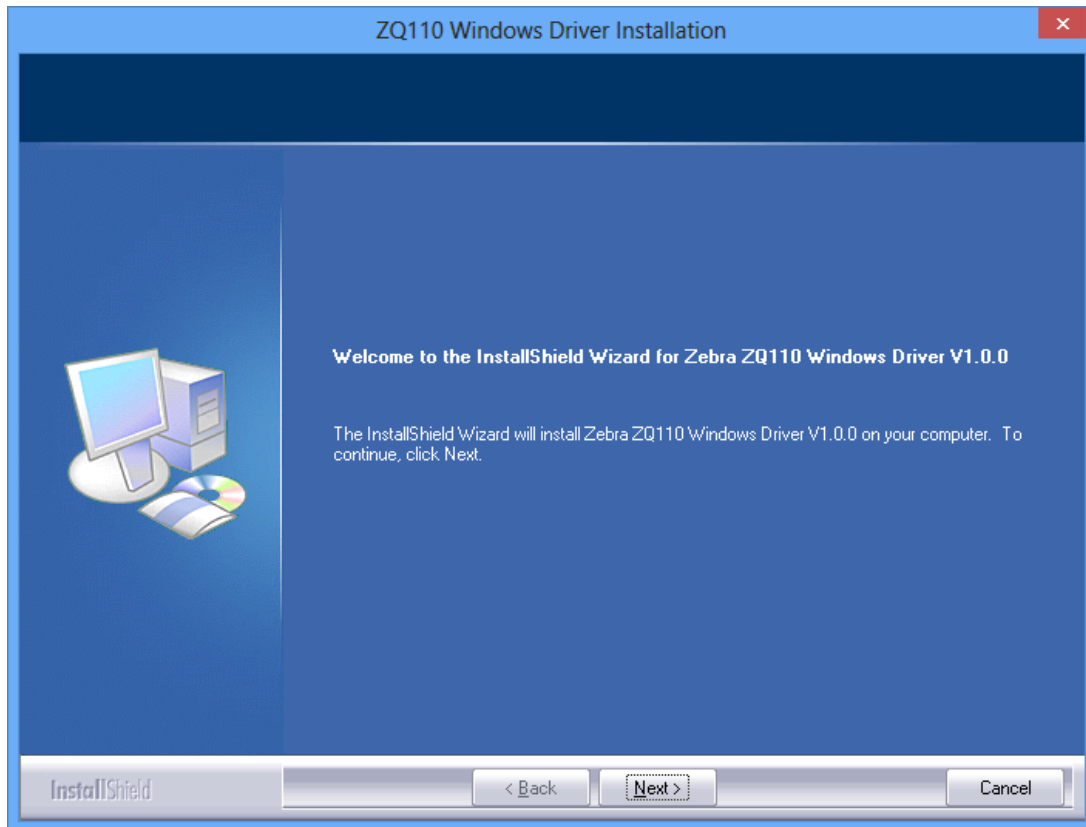
6) Click **Print Test Page** and check printing status.



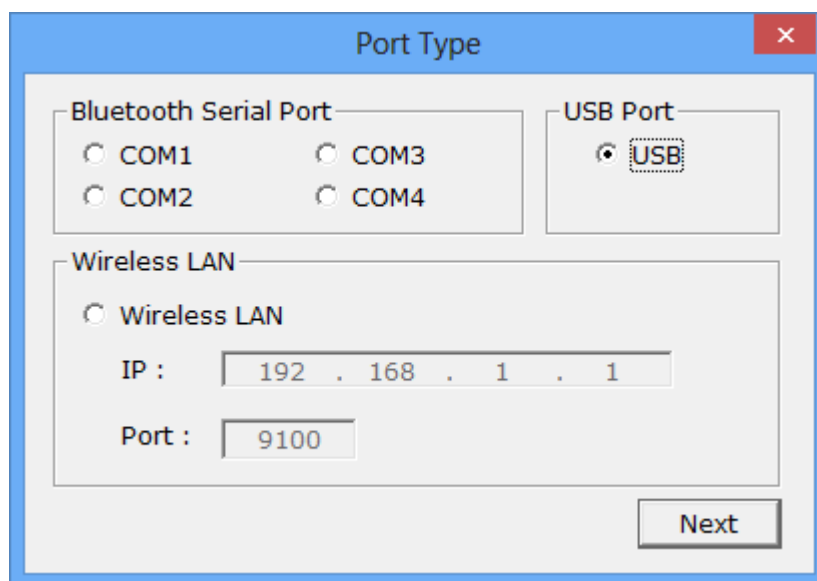
Proper installation of the driver is indicated if the test page is printed normally.

**4-2-2 Via USB Port**

- 1) Double-click the Windows Driver installation file.
- 2) Click **Next**.

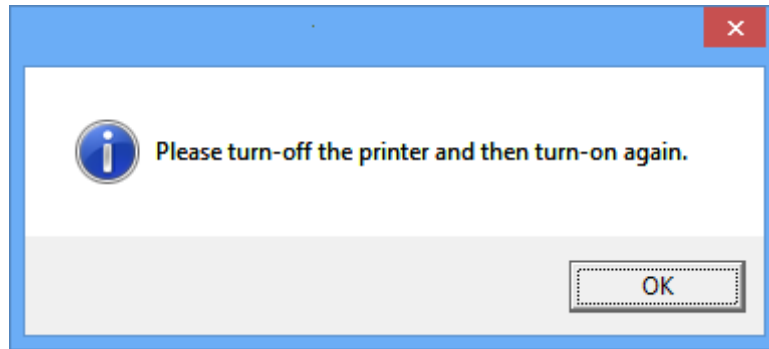


- 3) Select **USB** and click **Next**.





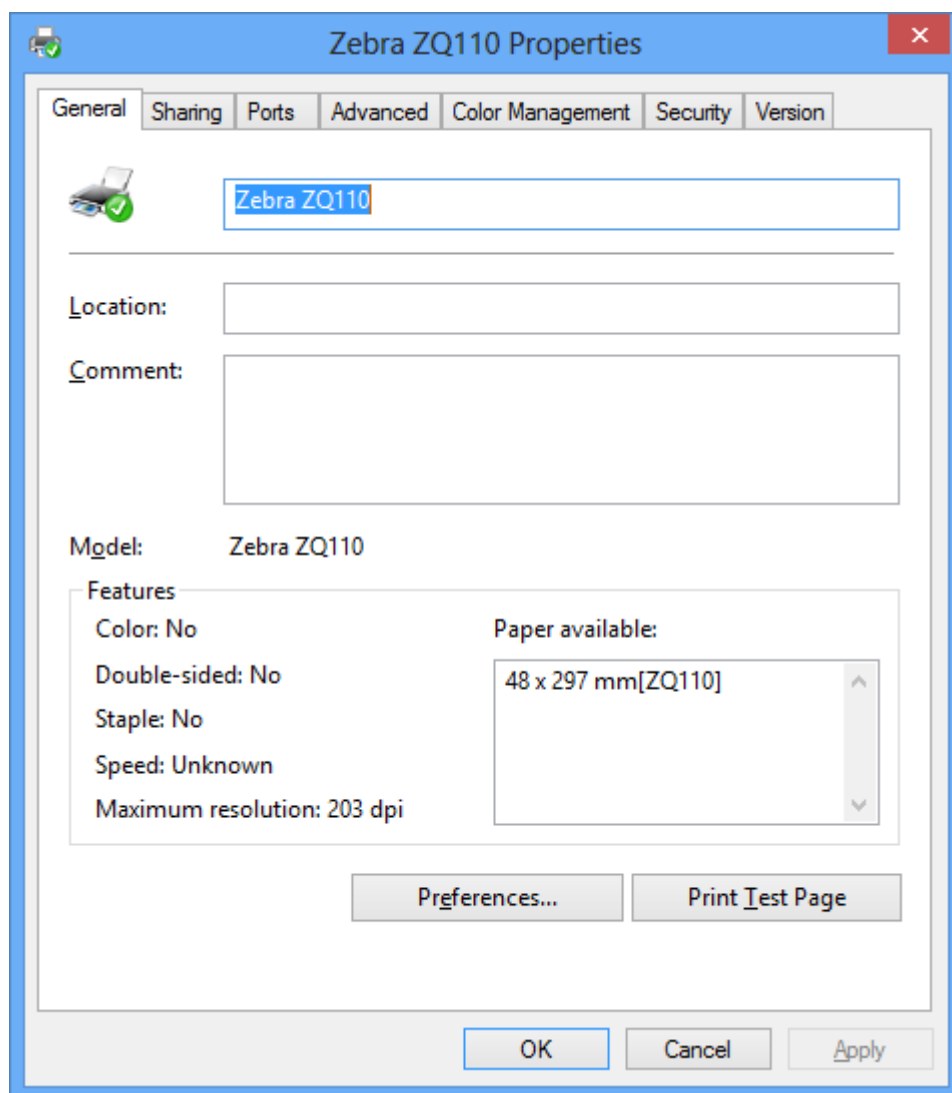
4) Click **OK**.



5) Turn off the printer and then turn it on again. The printer driver will be installed automatically.

6) Open the printer properties window in the Windows OS.  
※ Control Panel – Hardware and Sound – Device and Printers.

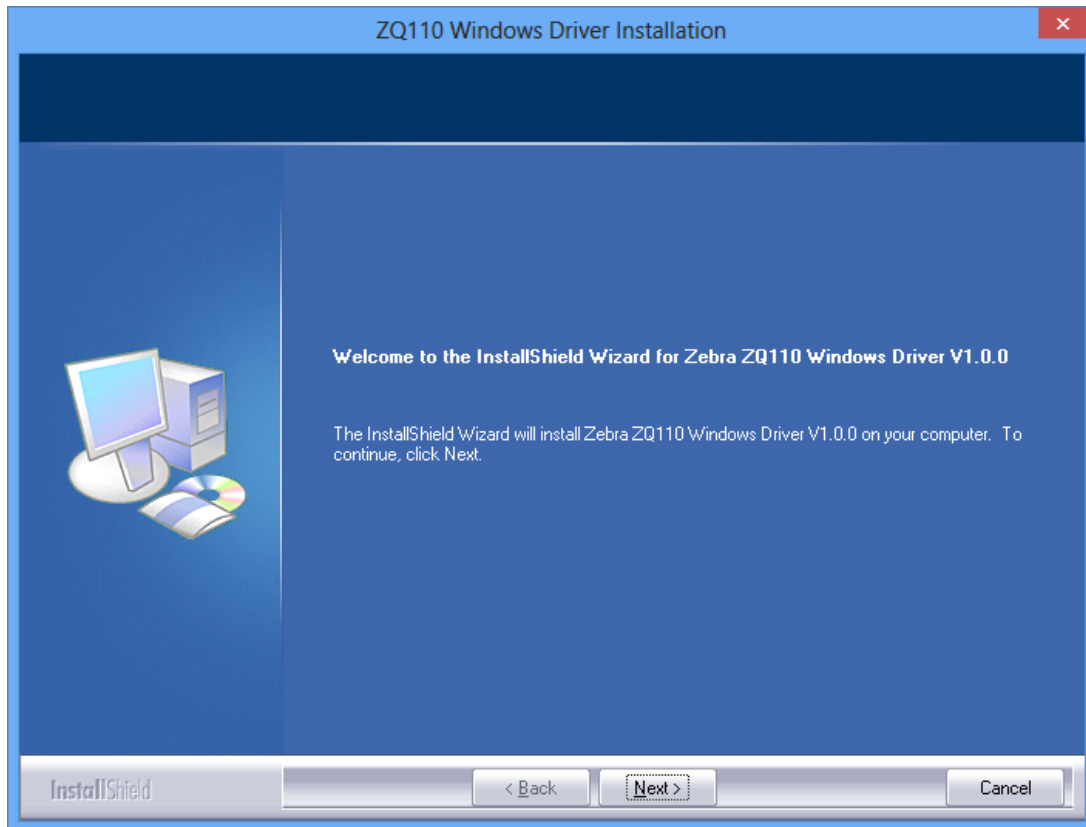
7) Click **Print Test Page** and check printing status.



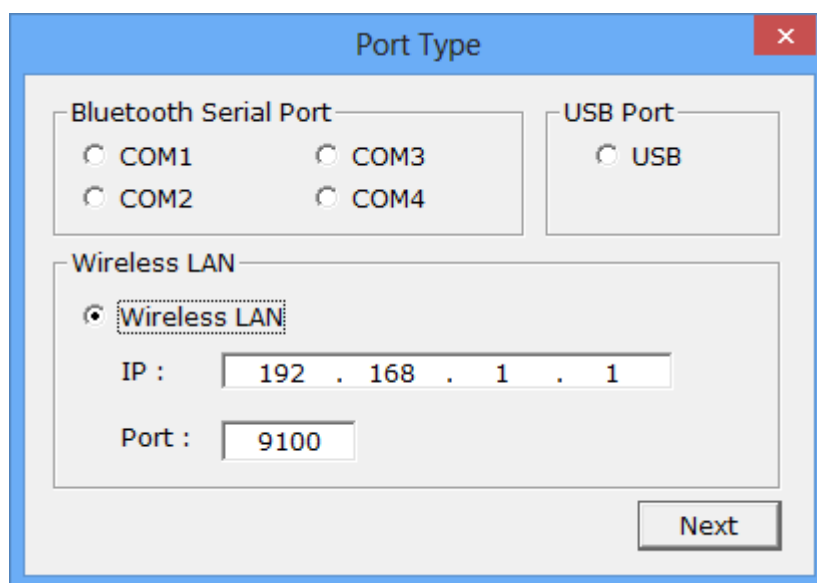
Proper installation of the driver is indicated if the test page is printed normally

**4-2-3 Via WLAN Port**

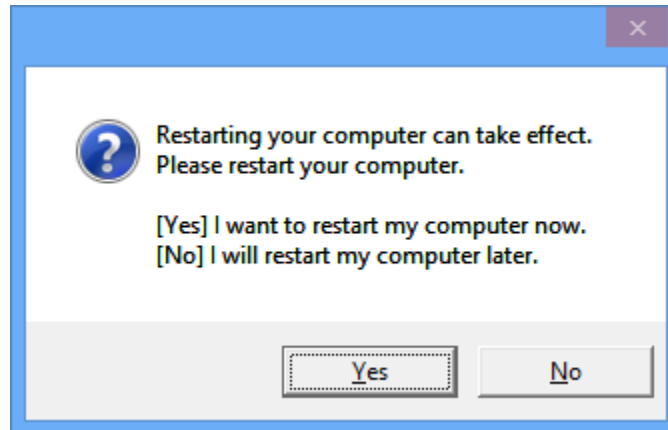
- 1) Double-click the Windows Driver installation file.
- 2) Click **Next**.



- 3) Select **Wireless LAN**.
- 4) Enter the IP address and port number, and then click **Next**.



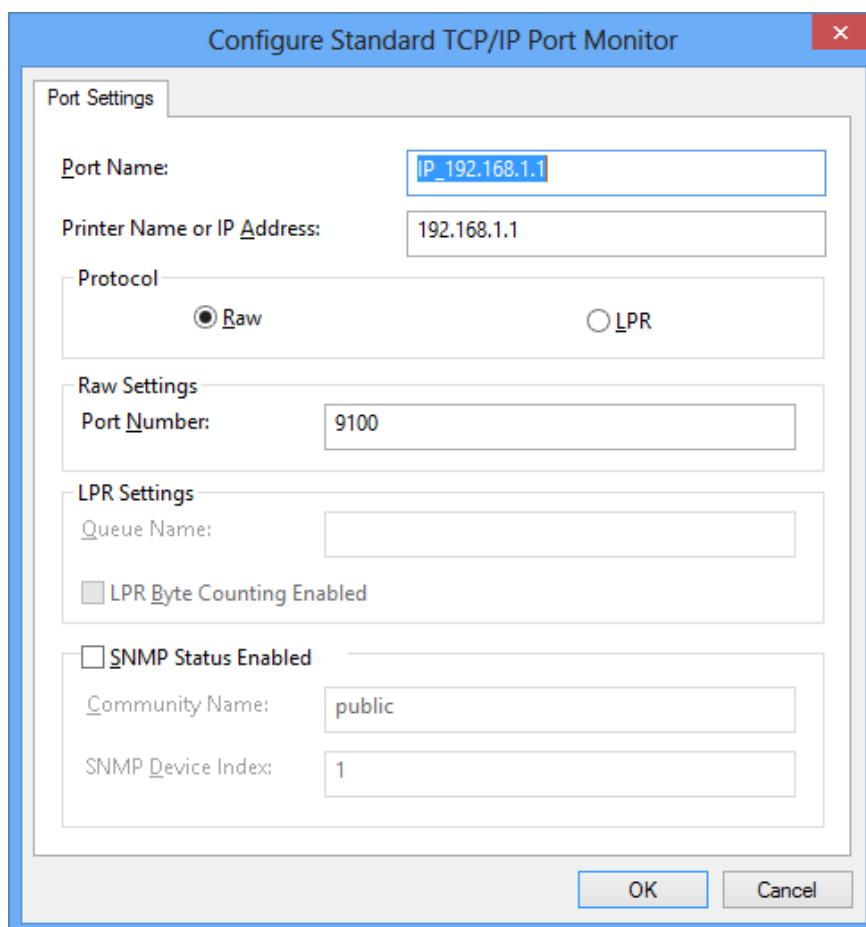
5) Click **Yes** to reboot the PC.



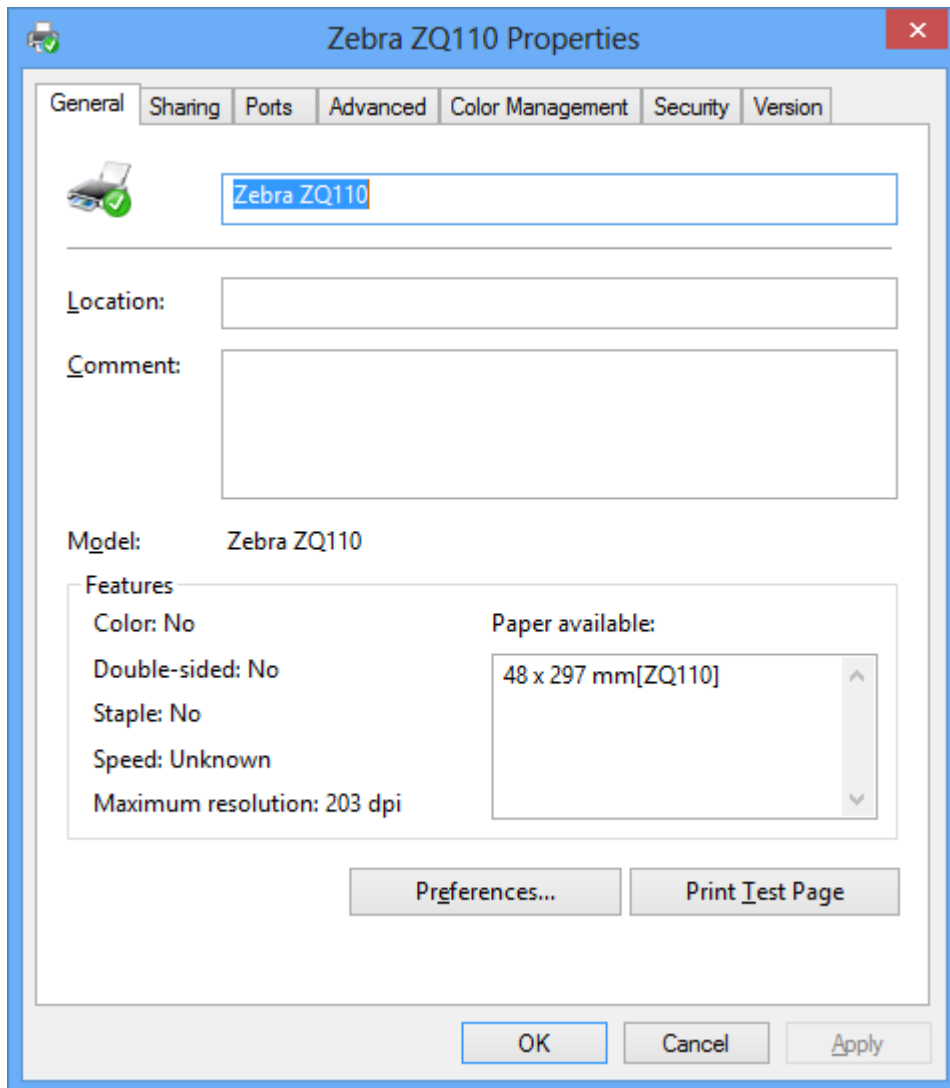
6) Open the printer properties window in the Windows OS.  
※ Control Panel – Hardware and Sound – Device and Printers.

7) In the **Ports** tab, click **Configure Port....**

8) Match the communication settings to those of the printer.  
(The communication settings of the printer can be performed by conducting a self-test.)



9) Click **Print Test Page** and check printing status.

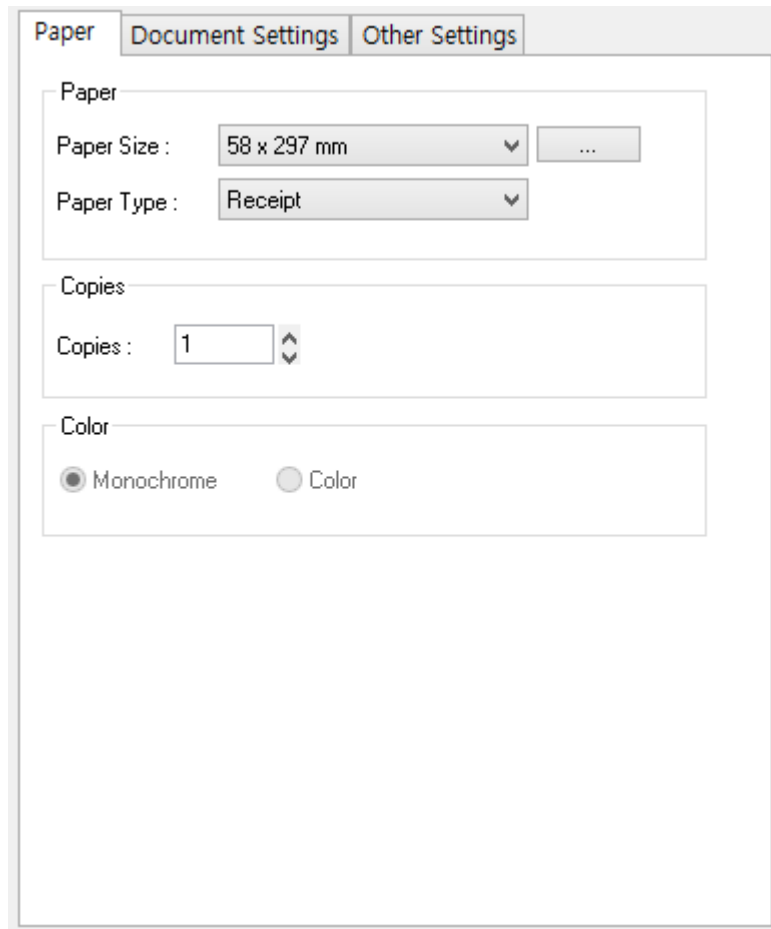


Proper installation of the driver is indicated if the test page is printed normally.

## 5. Windows Driver Settings

The following functions can be configured after installing the Windows driver.

### 5-1 Paper



- 1) Open the Printer Properties window for the corresponding OS.
- 2) In the **General** tab, click **Preferences**.
- 3) Click the **Paper** tab.

### 5-1-1 Paper Size

Paper size of 58 x 297 mm is selected by default, and the following sizes can be selected.

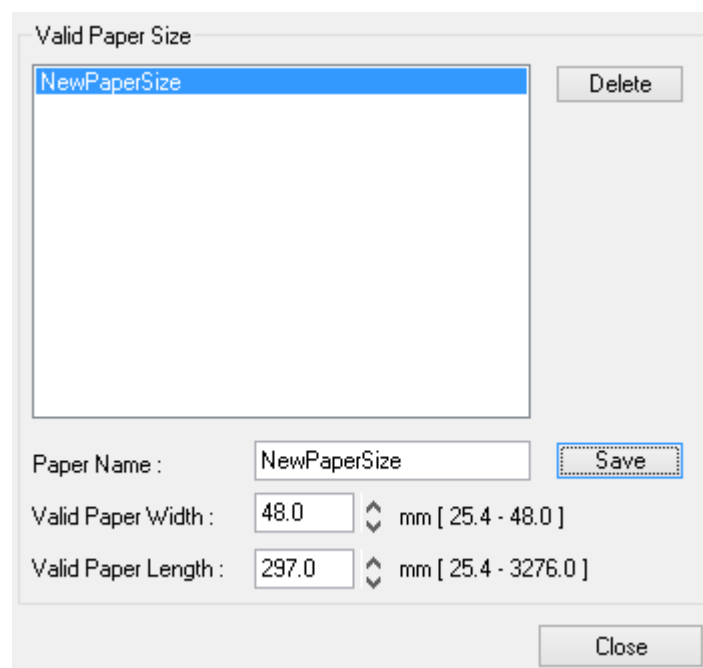
58 × 297 mm

58 × 3276 mm

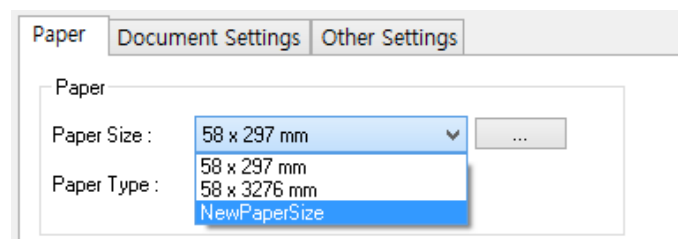
If a custom paper size is required, click “...” to add or update a custom paper size. Click **Save** after specifying the paper width/length and a paper name. If the specified paper name already exists on the system, you can update the paper width/length.

Valid Paper Width : 25.4 mm ~ 48 mm

Valid Paper Length : 25.4 mm ~ 3276 mm



You can choose the new paper size on the **Paper Size** combo-box after adding a paper size.



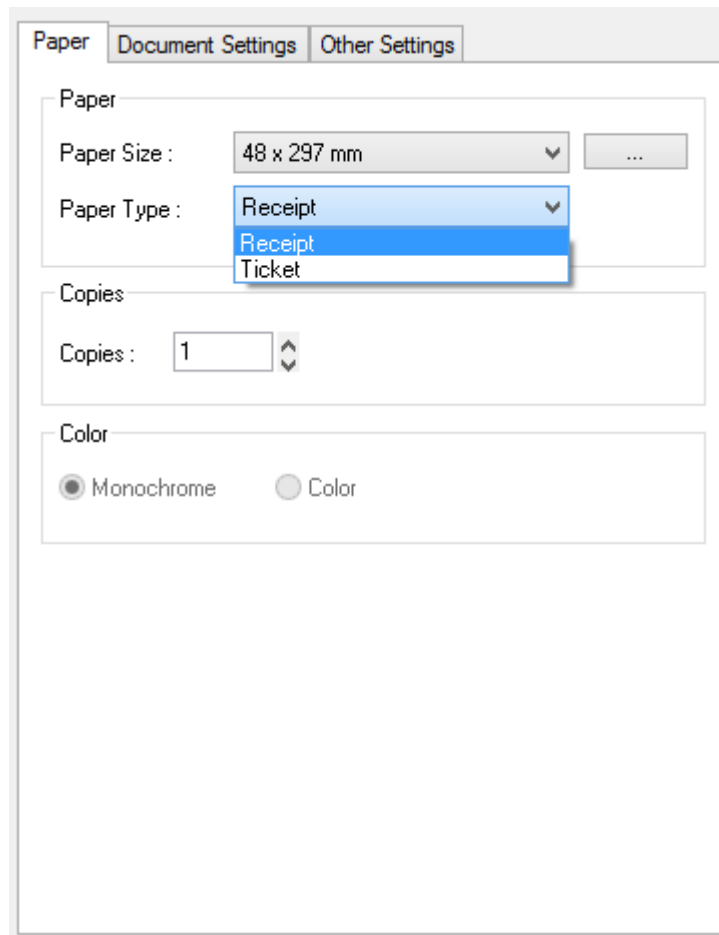
**Delete button:** Deletes the paper size selected in the list.

**Save button:** Adds a new paper size or update the paper size selected in the list if the paper name already exists on the system.

### 5-1-2 Paper Type

You can choose Receipt or Ticket as paper types. Receipt allows flexible paper length according to the data length. Ticket print in fixed length even the print data is short. The default setting is Receipt.

- Receipt : Receipt allows flexible paper length according to the data length.  
Ticket : Ticket print in fixed length even the print data is short.



### 5-1-3 Copies

The number of Copies is set to 1 by default. You can set this value to a range of 1 to 255.

## 5-2 Document Settings

The screenshot shows a dialog box with three tabs: "Paper", "Document Settings", and "Other Settings". The "Document Settings" tab is active. It contains two main sections: "Send Command" and "Line Feed".

**Send Command**

Start Doc :

Start Page :

End Page :

End Doc :

Example : <1B4A00> or <1B>J<00>

**Line Feed**

Line-feeds after printing :  [ 0 - 99 ]

- 1) Open the **Printer Properties** window for the corresponding OS.
- 2) In the **General** tab, click **Preferences** or **Printing Preferences**.
- 3) Click the **Document Settings** tab.



### **5-2-1 Send Commands**

The Windows driver serves to receive the content for print from an application and send it to the printer. The Send Commands function allows for the addition of desired commands at the start or end of the print content.

- Start Doc : Addition of command at the beginning of the document.
- Start Page : Addition of command at the beginning of the page.
- End Page : Addition of command at the end of the page.
- End Doc : Addition of command at the end of the document.

For more information on the hexadecimals that can be entered in Start Doc, Start Page, End Page and End Doc, refer to the Control Commands Manual.

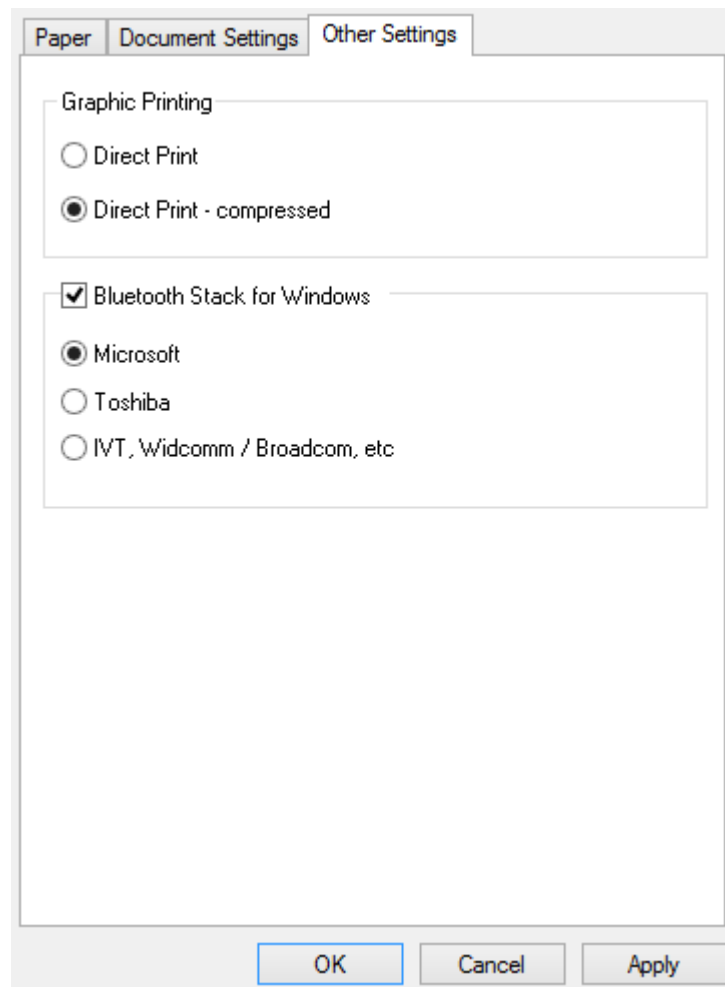
### **5-2-2 Line Feed**

Enter a number between 0 and 99 for adding blank lines at the end of printing.

### **5-2-3 Form Feed**

Enter a number between 0 and 99 for adding the form feed command (0x0c) at the end of printing.

### 5-3 Other Settings



- 1) Open the **Printer Properties** window for the corresponding OS.
- 2) In the **General** tab, click **Preferences** or **Printing Preferences**.
- 3) Click the **Other Settings** tab.

#### 5-3-1 Graphic Printing

Depending on graphic printing option, printer driver sends raw image data or compressed image data using RLE (Run-length encoding) to the printer.

Select **Direct Print - compressed** if you want to print faster.

#### 5-3-2 Bluetooth Stack for Windows

This option affects the print speed if Bluetooth® is used for communication. If you have installed a Bluetooth stack driver provided by Toshiba®, IVT®, Broadcom® or other company, select a provider. The default is Microsoft. Select Microsoft if you do not know exactly which stack driver you are using.

## 6. Windows Driver Specifications

### 6-1 Fonts

The Windows Driver of the printer supports the fonts listed below.

Printing is done at faster speed when using the fonts below as opposed to the Windows fonts of the OS.

Printer Fonts				Size (Dot / Point)
FontA1x1	FontA1x1[Ext.]	FontA1x1[255]	FontA1x1[Latin9]	12x24 / 8.5
FontA1x2	FontA1x2[Ext.]	FontA1x2[255]	FontA1x2[Latin9]	12x48 / 17
FontA2x1	FontA2x1[Ext.]	FontA2x1[255]	FontA2x1[Latin9]	24x24 / 8.5
FontA2x2	FontA2x2[Ext.]	FontA2x2[255]	FontA2x2[Latin9]	24x48 / 17
FontA2x4	FontA2x4[Ext.]	FontA2x4[255]	FontA2x4[Latin9]	24x96 / 34
FontA4x2	FontA4x2[Ext.]	FontA4x2[255]	FontA4x2[Latin9]	48x48 / 17
FontA4x4	FontA4x4[Ext.]	FontA4x4[255]	FontA4x4[Latin9]	48x96 / 34
FontA4x8	FontA4x8[Ext.]	FontA4x8[255]	FontA4x8[Latin9]	48x192 / 68
FontA8x4	FontA8x4[Ext.]	FontA8x4[255]	FontA8x4[Latin9]	96x96 / 34
FontA8x8	FontA8x8[Ext.]	FontA8x8[255]	FontA8x8[Latin9]	96x192 / 68
FontB1x1	FontB1x1[Ext.]	FontB1x1[255]	FontB1x1[Latin9]	9x17 / 6
FontB1x2	FontB1x2[Ext.]	FontB1x2[255]	FontB1x2[Latin9]	9x34 / 12
FontB2x1	FontB2x1[Ext.]	FontB2x1[255]	FontB2x1[Latin9]	18x17 / 6
FontB2x2	FontB2x2[Ext.]	FontB2x2[255]	FontB2x2[Latin9]	18x34 / 12
FontB2x4	FontB2x4[Ext.]	FontB2x4[255]	FontB2x4[Latin9]	18x68 / 24
FontB4x2	FontB4x2[Ext.]	FontB4x2[255]	FontB4x2[Latin9]	36x34 / 12
FontB4x4	FontB4x4[Ext.]	FontB4x4[255]	FontB4x4[Latin9]	36x68 / 24
FontB4x8	FontB4x8[Ext.]	FontB4x8[255]	FontB4x8[Latin9]	36x136 / 48.5
FontB8x4	FontB8x4[Ext.]	FontB8x4[255]	FontB8x4[Latin9]	72x68 / 24
FontB8x8	FontB8x8[Ext.]	FontB8x8[255]	FontB8x8[Latin9]	72x136 / 48.5
FontC1x1	FontC1x1[Ext.]	FontC1x1[255]	FontC1x1[Latin9]	9x24 / 8.5
FontC1x2	FontC1x2[Ext.]	FontC1x2[255]	FontC1x2[Latin9]	9x48 / 17
FontC2x1	FontC2x1[Ext.]	FontC2x1[255]	FontC2x1[Latin9]	18x24 / 8.5
FontC2x2	FontC2x2[Ext.]	FontC2x2[255]	FontC2x2[Latin9]	18x48 / 17
FontC2x4	FontC2x4[Ext.]	FontC2x4[255]	FontC2x4[Latin9]	18x96 / 34
FontC4x2	FontC4x2[Ext.]	FontC4x2[255]	FontC4x2[Latin9]	36x48 / 17
FontC4x4	FontC4x4[Ext.]	FontC4x4[255]	FontC4x4[Latin9]	36x96 / 34
FontC4x8	FontC4x8[Ext.]	FontC4x8[255]	FontC4x8[Latin9]	36x192 / 68
FontC8x4	FontC8x4[Ext.]	FontC8x4[255]	FontC8x4[Latin9]	72x96 / 34
FontC8x8	FontC8x8[Ext.]	FontC8x8[255]	FontC8x8[Latin9]	72x192 / 68

Printer Fonts are defined as follows.

- 1) FontA1x2
  - ANSI Character code support (Code Page 1252)
  - Character size (dot): 12 x 24 (double height)
  - Sizes (point): 17
  
- 2) FontA1x2[Latin9]
  - ANSI Character code support (ISO 8859-15 Latin-9)
  - Character size (dot): 12 x 24 (double height)
  - Sizes (point): 17
  
- 3) FontA1x2[Ext.]
  - IBM expansion Character code support (Code Page 437)
  - Character size (dot): 12 x 24 (double height)
  - Sizes (point): 17
  
- 4) FontA1x2[255]
  - Buyer exclusive code support (User Code page)
  - Character size (dot): 12 x 24 (double height)
  - Sizes (point): 17

## 6-2 Special Functions

This Windows driver supports the special functions as shown in the following table. Select the **FontControl** font first and use the characters in the table to use the special functions. Take care as this function is not for printing general texts.

This function is not an ordinary character printing function. Take special care.

Character	Special Function
5	Prints HT (0 x 09)
6	Prints LF (0 x 0A)
7	Prints CR (0 x 0D)
i	Prints double-sized color image saved in the 00 address
j	Prints double-sized color image saved in the 01 address
k	Prints double-sized color image saved in the 02 address
l	Prints double-sized color image saved in the 03 address
m	Prints double-sized color image saved in the 04 address
p	Does not add HRI characters to the barcode
q	Adds HRI characters in FontA above the barcode
r	Adds HRI characters in FontA below the barcode
s	Adds HRI characters in FontB above the barcode
t	Adds HRI characters in FontB below the barcode
w	Aligns text to the left
x	Aligns text to the center
y	Aligns text to the right
R	Prints the color image saved in the 00 address
S	Prints the color image saved in the 01 address
T	Prints the color image saved in the 02 address
U	Prints the color image saved in the 03 address
V	Prints the color image saved in the 04 address

### 1) Sample Use

If the **FontControl** font is selected and 6 is entered, the LF (Line Feeding) operation is activated. (This does not entail the printing of the character “6”.)

### 2) FontControl Font Function

Printer Font for Special Function	Function	Size (point/dot)
FontControl	Justification (Left/Center/Right) Output HT, Output LF, Output CR Barcode Printing Print NV Graphic Data	(8.5 / 12x24)

### 6-3 Barcodes

The Windows Driver supports the barcodes indicated below.  
This function is available when entering barcode data after selecting **Printer Font Name**.  
In addition, the FontControl font can be used to add HRI characters.

Printer Font Name	Size (Point)	Supported Characters
Codabar	18/35.5/53/71	Numeric: 0~9 Symbols: \$, +, -, ., /, : Letters: A~D
Code39	18/35.5/53/71	Numeric: 0~9 Symbols: \$, +, -, ., / Letters: A~Z
JAN13 (EAN)	18/35.5/53/71	Numeric: 0~9
JAN8 (EAN)	18/35.5/53/71	Numeric: 0~9
ITF	18/35.5/53/71	Numeric: 0~9
UPC-A	18/35.5/53/71	Numeric: 0~9
UPC-E	18/35.5/53/71	Numeric: 0~9
Code93	18/35.5/53/71	ASCII CODE: 0~127
Code128	18/35.5/53/71	ASCII CODE: 0~127

#### 1) Sample Use

Select **Code39** and Size **18**, and then enter "1234".  
The barcode corresponding to "1234" is printed.

#### 2) When Using Code128

Select **Code128** and Size **18**, and then enter "{B1234".  
The barcode corresponding to "1234" is printed.

When using Code128, characters, such as "{A", "{B", "{C", should be included before the input data.

## **6-4 Two-Dimensional Barcodes**

The Windows Driver supports the following two-dimensional barcodes.

- PDF417
- QR Code
- Data Matrix Code
- Aztec
- GS1 Databar
- GS1 Databar Omnidirect
- GS1 Databar Truncated
- GS1 Databar Stacked
- GS1 Databar Stacked Omnidirect
- GS1 Databar UPC-A
- GS1 Databar UPC-E
- GS1 Databar EAN-13
- GS1 Databar EAN-8
- GS1 Databar UCC/EAN-128&CC-A/B
- GS1 Databar UCC/EAN-128&CC-C
- 

Usage is identical to that for barcodes.

## **7. Use of Windows Driver**

### **7-1 Use of Visual Basic**

This section contains example codes to control the printer using Windows driver with Visual Basic. Sample codes contained in the CD.

#### **7-1-1 Windows Driver Selection**

The following code is an example of the selection of the Zebra ZQ110 Windows Driver.

```
For Each prnPrinter In Printers
If prnPrinter.DeviceName = "Zebra ZQ110" Then
Set Printer = prnPrinter
Exit For
End If
Next
```



### 7-1-2 Test Printing

The following code is an example of the printing of Arial Test via the Windows font, and FontA1x1Test via the printer font.

```
'Print in Windows font
Printer.FontSize = 9
Printer.FontName = "Arial"
Printer.Print "Arial Test"

'Print in printer font
Printer.FontSize = 8.5
Printer.FontName = "FontA1x1"
Printer.Print "FontA1x1Test"

Printer.EndDoc
```

### 7-1-3 Barcode Printing

The following code is an example of the printing of the JAN8 (EAN) barcode.

```
'Print Bar Code.
Printer.FontSize = 18

Printer.FontName = "JAN8 (EAN)"
Printer.Print "1234567"

Printer.EndDoc
```

### 7-1-4 Two-Dimensional Barcode Printing

The following code is an example of the printing of the PDF417 two-dimensional barcode.

```
'Print Two-dimensional Codes.
Printer.FontSize = 8.5

Printer.FontName = "PDF417"
Printer.Print "Print Test PDF417"

Printer.EndDoc
```

## **7-2 Use of WordPad**

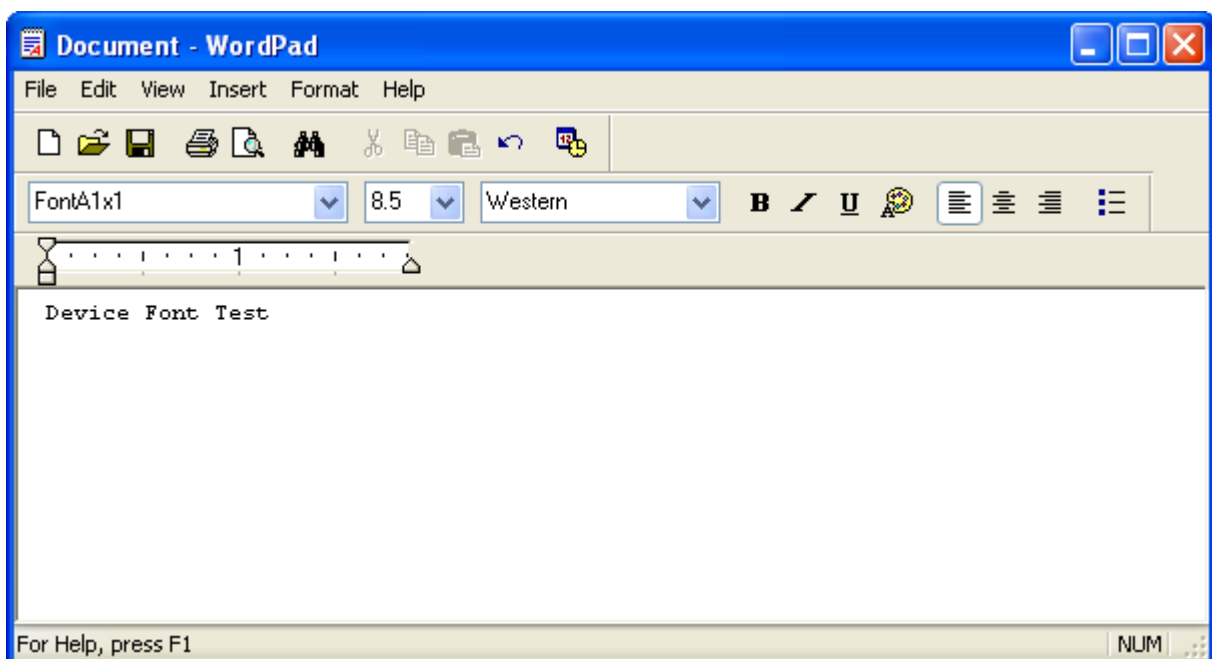
### **7-2-1 WordPad Environment Settings**

After running WordPad and setting the following conditions, conduct a test.

- Select Printer  
After selecting “Print” from the “File” tab, select the printer (Zebra ZQ110).
  
- Select Paper Size, Orientation, and Margins  
After selecting “Page Settings” from the “File” tab, select the paper size, orientation, and margins.

### **7-2-2 Text Printing**

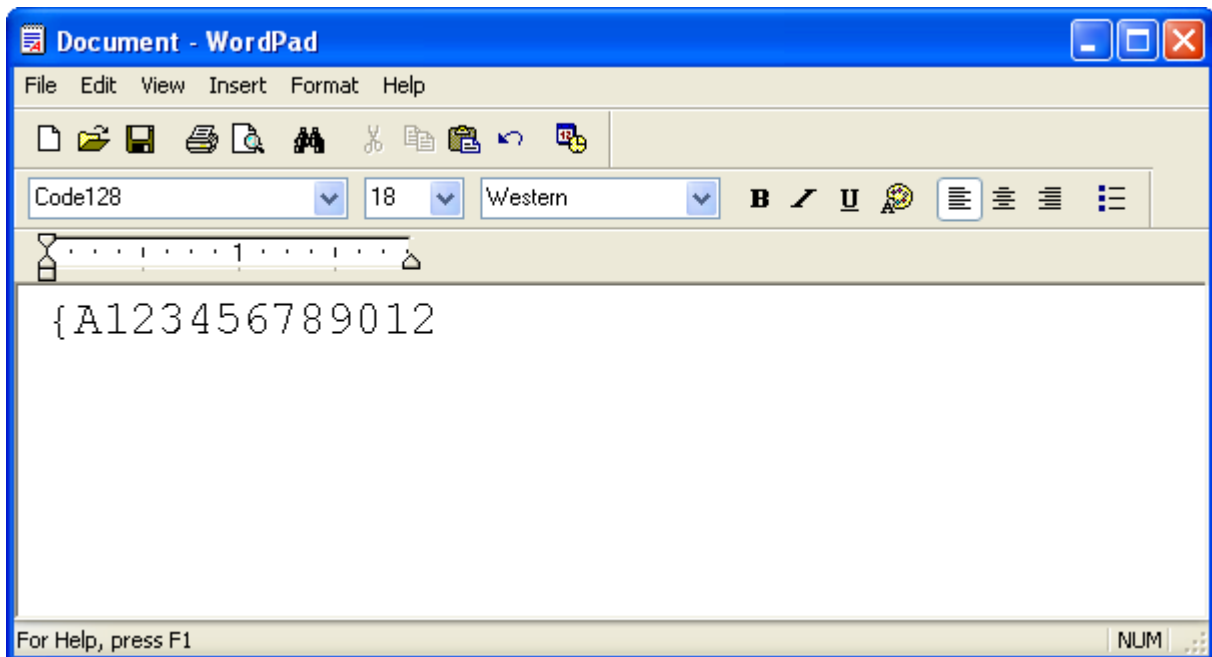
Use the Windows Driver of the printer to run a test.



- 1) Select the desired font from the Font menu (FontA 1x1).
- 2) Select the desired font size (8.5).
- 3) Enter the text to be printed in WordPad.
- 4) Click the **Print** button in the toolbar to print.

### 7-2-3 Barcode Printing

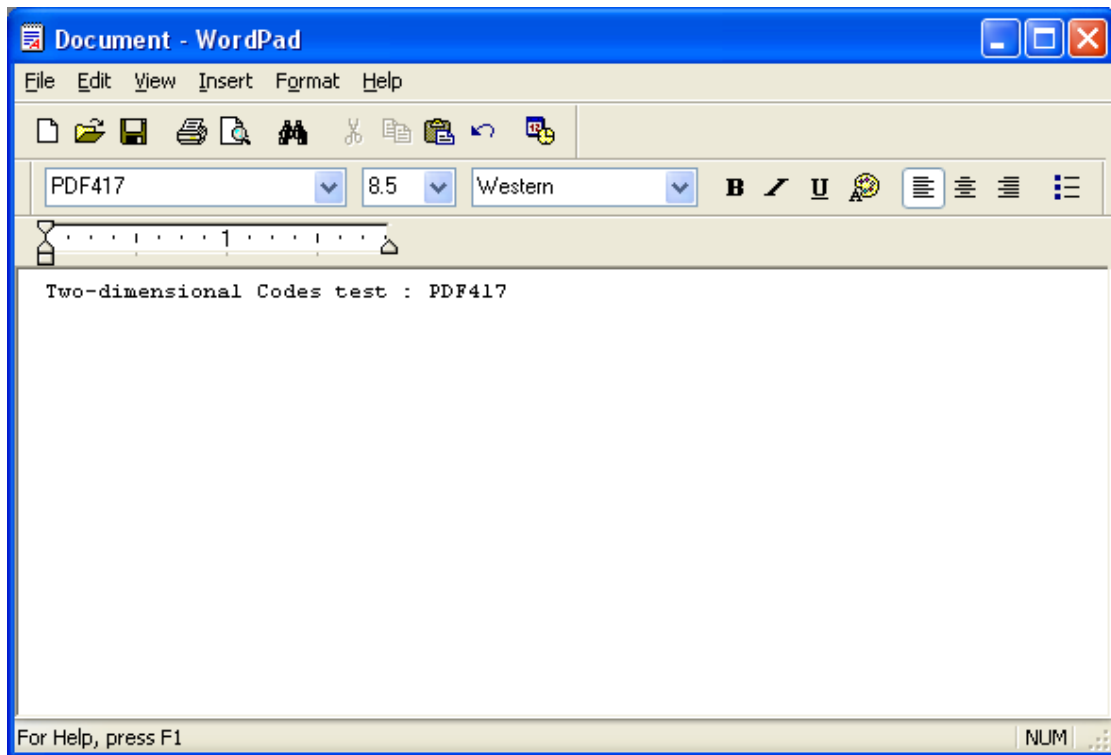
Use the Windows Driver of the printer to print the barcode.



- 1) Select the desired barcode from the Font menu (Code128).
- 2) Select the desired font size (18).
- 3) Enter "{A123456789012}" in WordPad.
- 4) Click the **Print** button in the toolbar to print.

## 7-2-4 Two-Dimensional Barcode Printing

Use the Windows Driver of the printer to print the two-dimensional barcode.



- 1) Select the desired two-dimensional barcode from the Font menu (PDF417).
- 2) Select the desired font size (8.5).
- 3) Enter "Two-dimensional Codes Test: PDF417" in WordPad.
- 4) Click the **Print** button in the toolbar to print.



[www.zebra.com](http://www.zebra.com)

---

**Zebra Technologies International, LLC**

475 Half Day Road  
Suite 500, Lincolnshire  
Illinois 60069 USA  
Phone: +1.847.634.6700  
Toll-Free: +1.800.230.9494  
Fax: +1.847.913.8766

**Zebra Technologies Europe Limited**

Dukes Meadow  
Millboard Road  
Bourne End  
Buckinghamshire, SL8 5XF, UK  
Phone: +44 (0)1628 556000  
Fax: +44 (0)1628 556001