

# ZXP Series 7™

## Card Printer



## Linux Installation Guide



**ZEBRA**

## Copyright

© 2017 ZIH Corp. and/or its affiliates. All rights reserved. ZEBRA and the stylized Zebra head are trademarks of ZIH Corp., registered in many jurisdictions worldwide. All other trademarks are the property of their respective owners.

**COPYRIGHTS & TRADEMARKS:** For complete copyright and trademark information, go to: [www.zebra.com/copyright](http://www.zebra.com/copyright)

**WARRANTY:** For complete warranty information, go to: [www.zebra.com/warranty](http://www.zebra.com/warranty)

**END USER LICENSE AGREEMENT:** For complete EULA information, go to: [www.zebra.com/eula](http://www.zebra.com/eula)

## Terms of Use

**Proprietary Statement** This manual contains proprietary information of Zebra Technologies Corporation and its subsidiaries (“Zebra Technologies”). It is intended solely for the information and use of parties operating and maintaining the equipment described herein. Such proprietary information may not be used, reproduced, or disclosed to any other parties for any other purpose without the express, written permission of Zebra Technologies.

**Product Improvements** Continuous improvement of products is a policy of Zebra Technologies. All specifications and designs are subject to change without notice.

**Liability Disclaimer** Zebra Technologies takes steps to ensure that its published Engineering specifications and manuals are correct; however, errors do occur. Zebra Technologies reserves the right to correct any such errors and disclaims liability resulting therefrom.

**Limitation of Liability** In no event shall Zebra Technologies or anyone else involved in the creation, production, or delivery of the accompanying product (including hardware and software) be liable for any damages whatsoever (including, without limitation, consequential damages including loss of business profits, business interruption, or loss of business information) arising out of the use of, the results of use of, or inability to use such product, even if Zebra Technologies has been advised of the possibility of such damages. Some jurisdictions do not allow the exclusion or limitation of incidental or consequential damages, so the above limitation or exclusion may not apply to you.

# Contents

<b>Introduction</b> .....	<b>1</b>
<b>Installing the Driver</b> .....	<b>3</b>
Installation Wizard.....	3
USB Printer Driver Installation.....	5
Ethernet Printer Driver Installation.....	8
Uninstall .....	10
Silent Installation from Terminal .....	12
Adding a USB Printer.....	13
Adding an Ethernet Printer via Terminal Command .....	13
Command.....	13
Example.....	13



# Introduction



**Important** • The driver cannot be manually installed as a standard CUPS printer Driver. The Zebra ZXP Series 7 Card Printer Linux driver has specific unique CUPS Printer back-end filters that must be installed using the driver Installer to operate correctly.

This manual describes installing the Linux printer driver on the following operating systems:

- Ubuntu 14.04.5 (64-bit)

This procedure supports the following Zebra card printers:

- ZXP Series 7

For support or product questions please contact your Zebra Reseller, Zebra Technical Support, or email [CardLinux@zebra.com](mailto:CardLinux@zebra.com).

To verify that you have a supported Ubuntu Linux OS installation, open a terminal prompt and type the following command:

```
cat /etc/lsb-release
```

To verify that you have a 64-bit Linux OS, open the terminal window and enter the following command:

```
uname -m
```

The following text string will be returned:

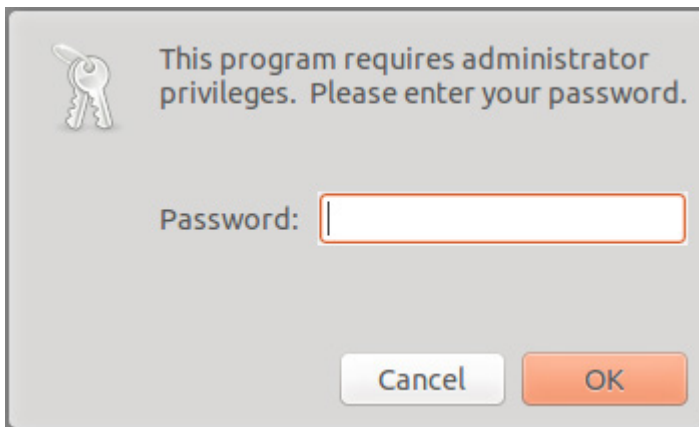
- For a 32-bit OS:  
**i386** or **i686**
- For a 64-bit OS:  
**X86\_64**



# Installing the Driver

## Installation Wizard

The installation can only be performed in Administrator mode. When prompted, enter the administrator password.

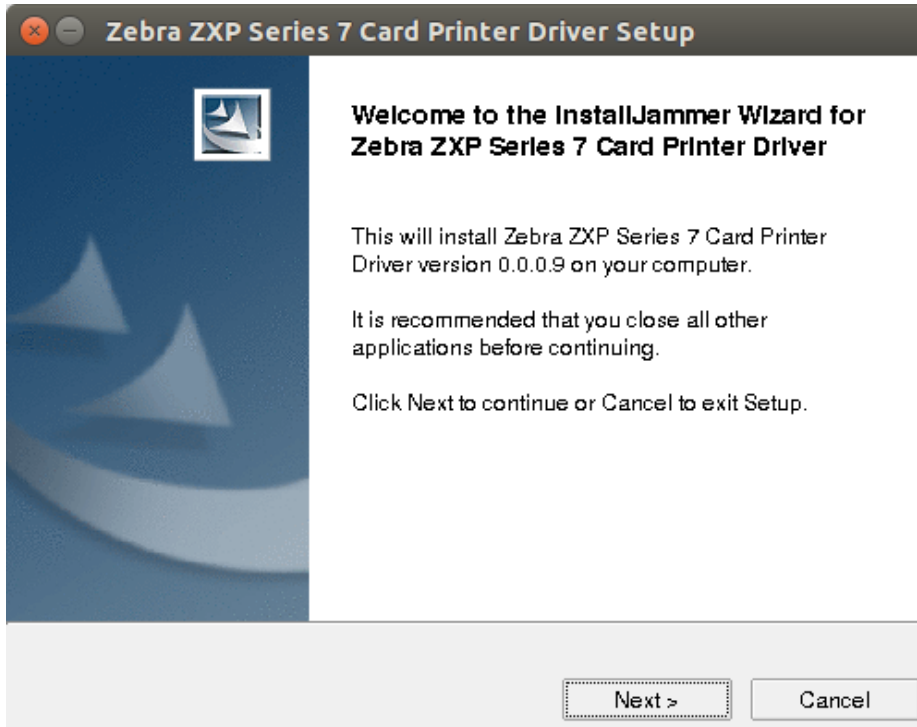


Double-click on the unzipped binary. Click **Yes** to begin the installation.

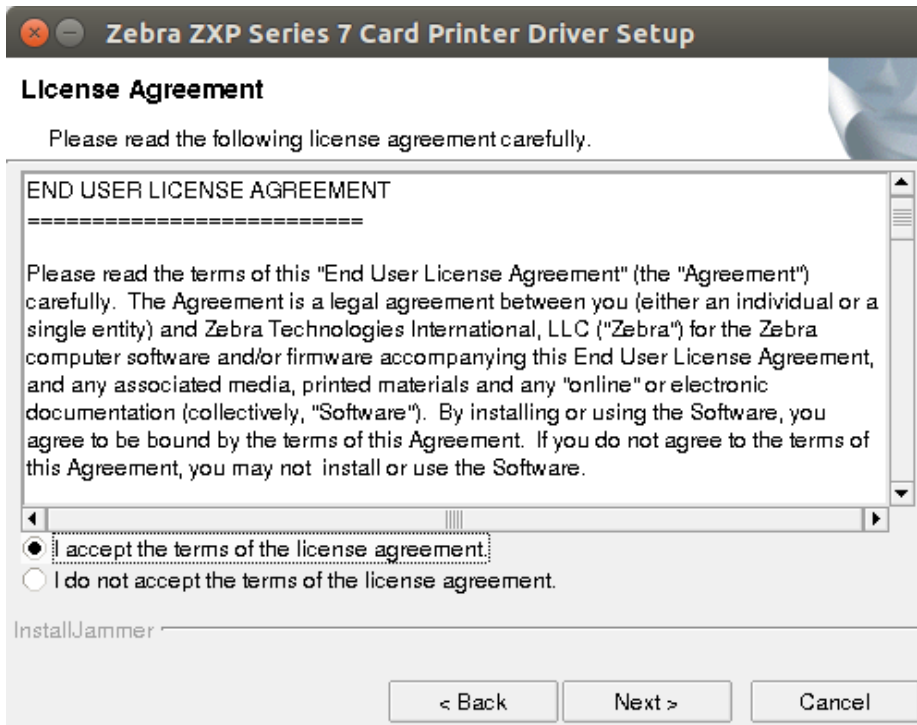


## Installing the Driver:

At the Introduction screen, click **Next** to continue the installation, or click **Cancel** to exit the setup.



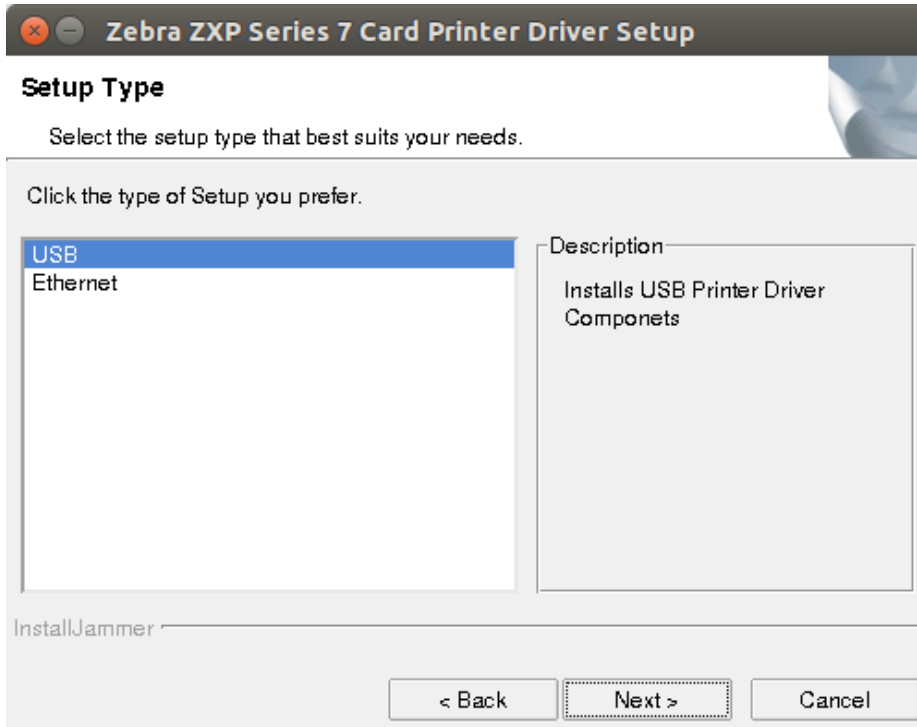
At the License Agreement Screen, read the **END USER LICENSE AGREEMENT** and select the radio button next to **I accept the term of the license agreement** to continue the installation. Selecting the radio button next to **I do not accept the terms of the license agreement** will exit the setup.





## Installing the Driver:

At the Setup Type screen, select either **USB** or **Ethernet** and click **Next** to continue with the chosen setup type.



### USB Printer Driver Installation

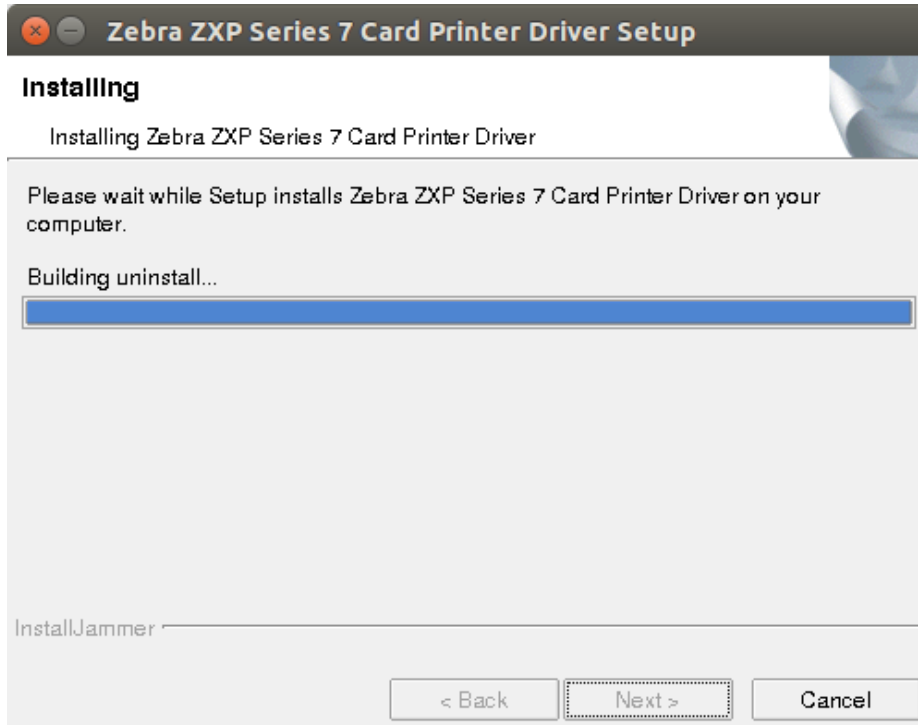
Upon selecting the USB setup type, the following note will appear:



The installer only supports Standard installation at this time. The driver installation will happen only on `/usr/local/ZebraZXP7Driver`.

## Installing the Driver:

At the Installing screen, the progress is shown. Upon completion of the installation, click **Next**.



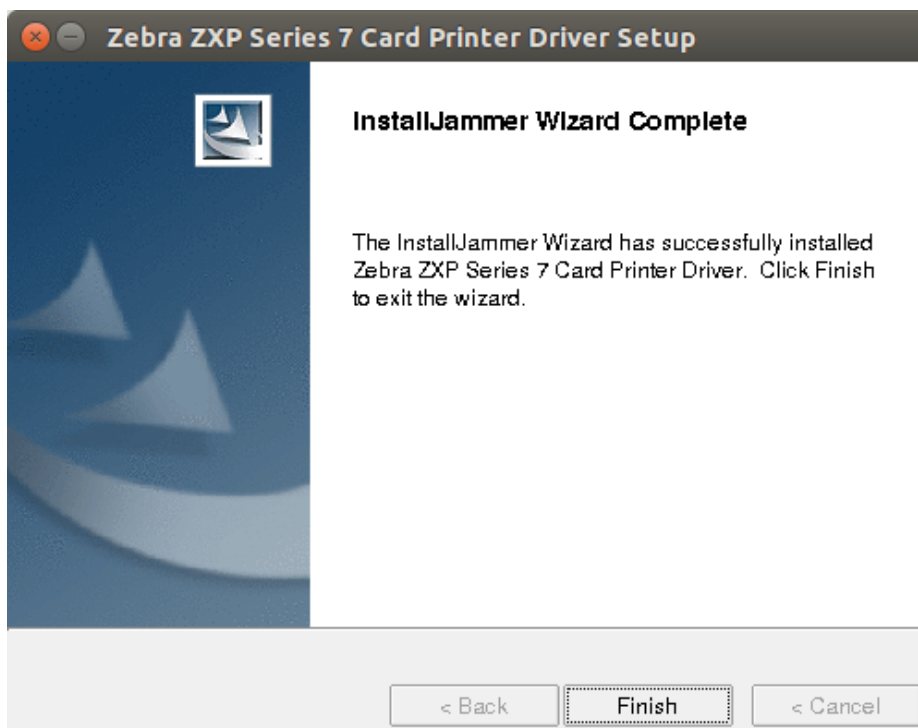
The following files will be copied onto the Linux System:

- /usr/local/ZebraZXP7Driver/10-ZebraZXPS7.rules
- /usr/local/ZebraZXP7Driver/com.ubuntu.pkexec.zebra.policy
- /usr/local/ZebraZXP7Driver/ErrorNotify.sh
- /usr/local/ZebraZXP7Driver/EthernetInstall.sh
- /usr/local/ZebraZXP7Driver/Install.sh
- /usr/local/ZebraZXP7Driver/jar/ParsePDF.jar
- /usr/local/ZebraZXP7Driver/jar/pdfbox-app-1.8.11.jar
- /usr/local/ZebraZXP7Driver/jar/RemoveAllPDFText.jar
- /usr/local/ZebraZXP7Driver/jre1.8.0\_111/
- /usr/local/ZebraZXP7Driver/jre1.8.0\_111.tar.gz
- /usr/local/ZebraZXP7Driver/KillPrinterNwDiscovery.sh
- /usr/local/ZebraZXP7Driver/launch.sh
- /usr/local/ZebraZXP7Driver/libtinyxml.so.6
- /usr/local/ZebraZXP7Driver/libudev\_64bit.so.1
- /usr/local/ZebraZXP7Driver/libzmxml.so
- /usr/local/ZebraZXP7Driver/pdftozxp7pdf
- /usr/local/ZebraZXP7Driver/rastertozxp7

## Installing the Driver:

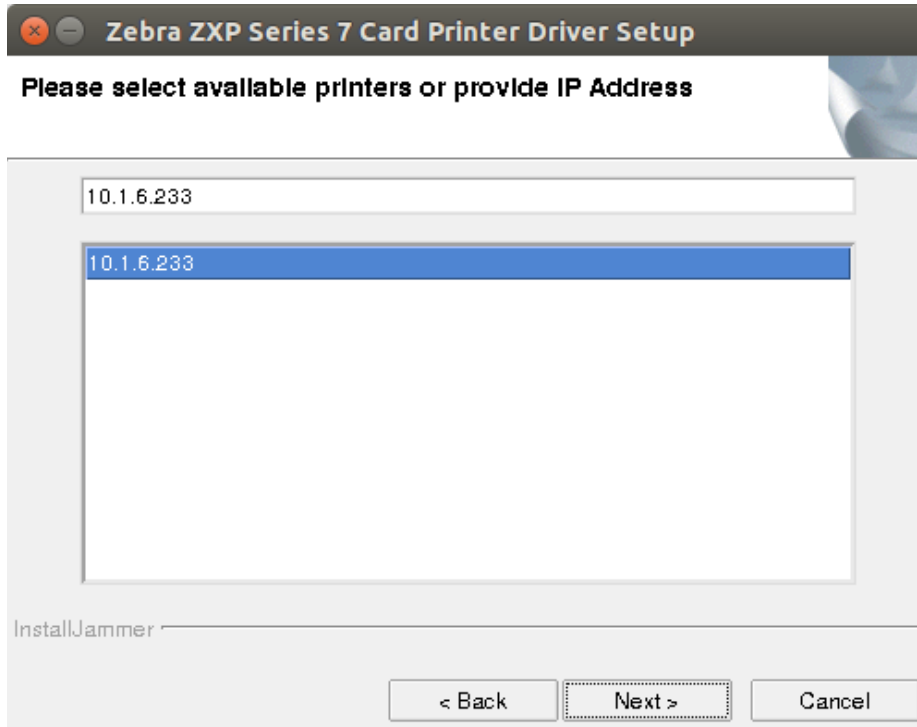
/usr/local/ZebraZXP7Driver/uninstall  
/usr/local/ZebraZXP7Driver/uninstall.ico  
/usr/local/ZebraZXP7Driver/zebralogo.png  
/usr/local/ZebraZXP7Driver/zebra-pkexec  
/usr/local/ZebraZXP7Driver/ZebraZXPS7Printer.ppd  
/usr/local/ZebraZXP7Driver/ZXP7DiscoverPrinter  
/usr/local/ZebraZXP7Driver/ZXP7ErrorNotify  
/usr/local/ZebraZXP7Driver/zxp7pnp  
/usr/local/ZebraZXP7Driver/ZXP7PPDConfig  
/usr/local/ZebraZXP7Driver/ZXP7PrinterProperties  
/usr/local/ZebraZXP7Driver/ZXP7RemovePrinter  
/usr/local/ZebraZXP7Driver/zxp7usb  
/usr/local/ZebraZXP7Driver/ZXPS7Config  
/usr/share/cups/model/ZebraZXPS7Printer.ppd

At the Complete screen, click **Finish** to exit the installer.



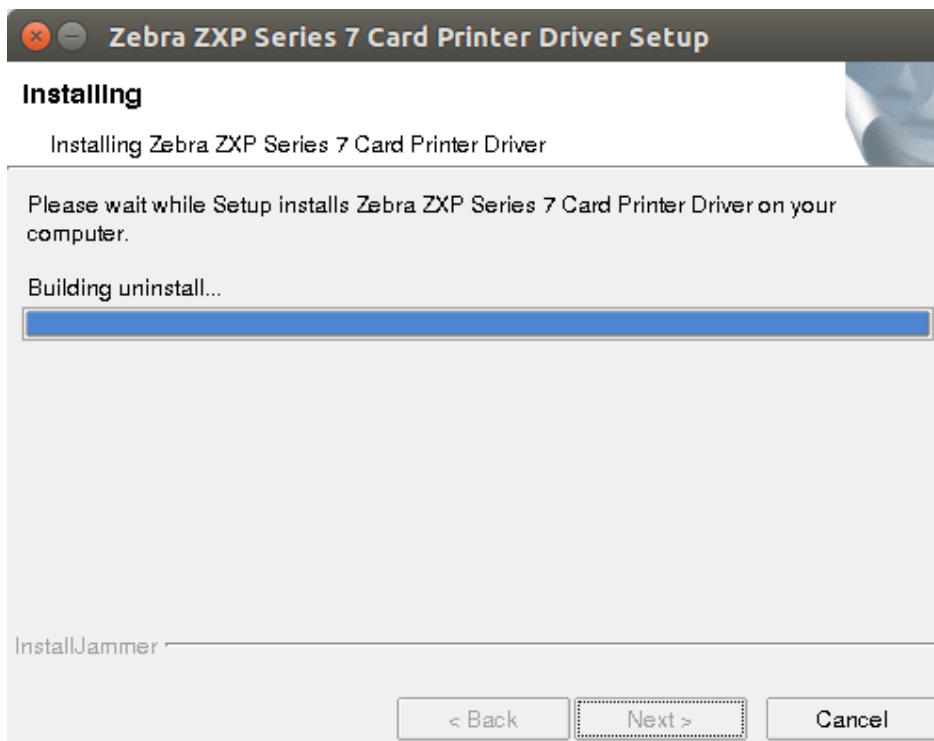
## Ethernet Printer Driver Installation

Upon selecting the Ethernet setup type, the Printer Select screen will appear:



The installer only supports Standard installation at this time. The driver installation will happen only on /usr/local/ZebraZXP7Driver.

Select the desired printer in the drop-down list, or enter the IP address of the printer in the **Enter Printer IP** field and select the printer by clicking the radio buttons. Click **Next** to continue the installation.



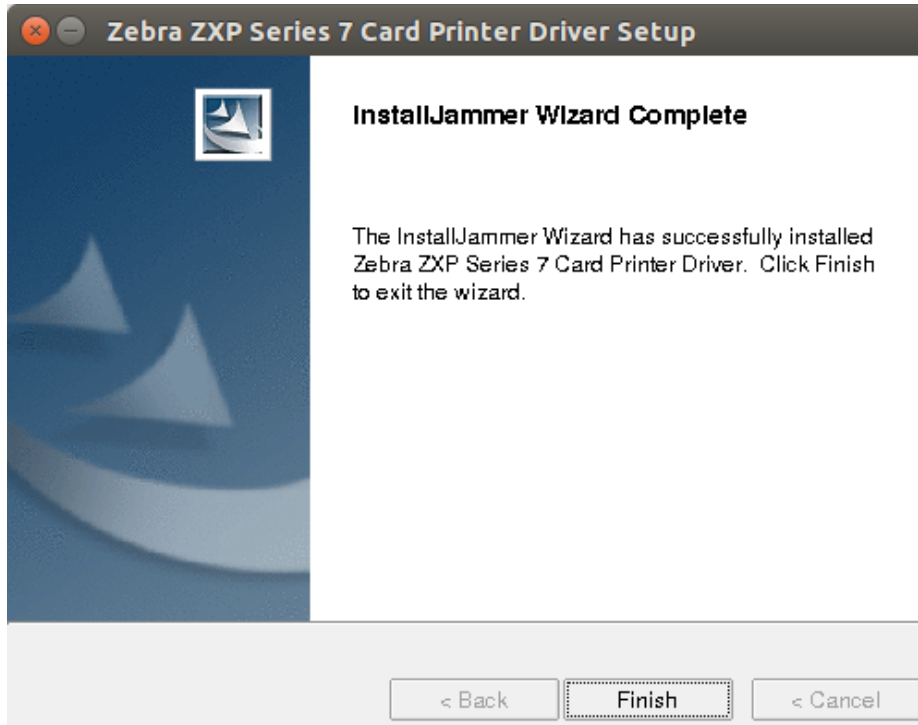
## Installing the Driver:

The following files will be copied onto the Linux System:

/usr/lib/cups/backend/zxp7usb

/usr/libexec/cups/filter/rastertoexp3

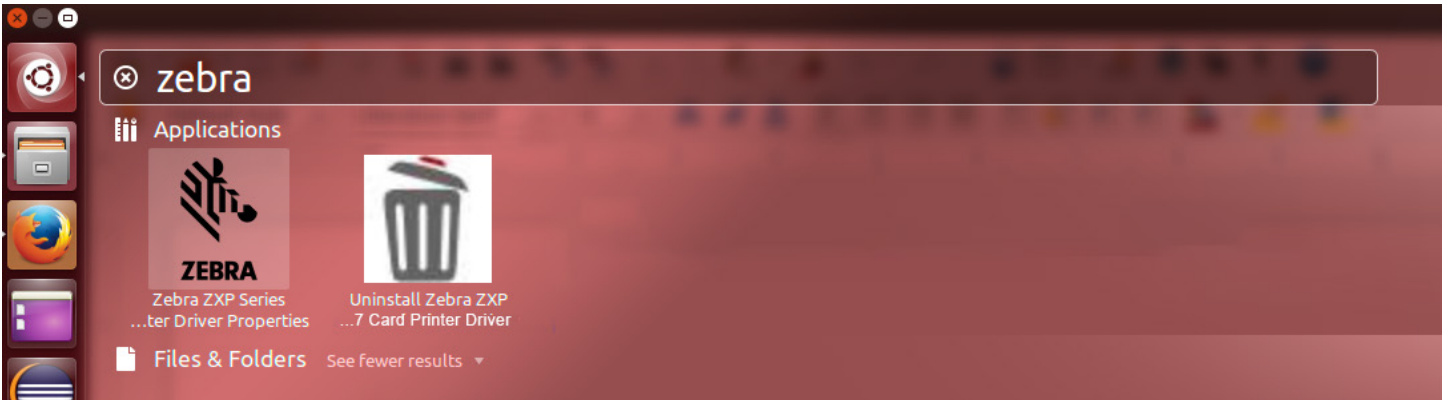
At the Complete screen, click **Finish** to exit the installer.



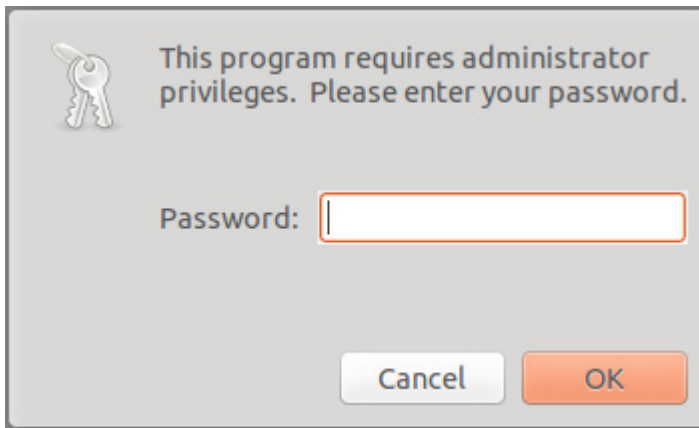
## Uninstall

Type “Zebra” in the Uninty Launcher (available in the top left corner of the screen by default or else use Window Key).

Or go to the application directory and double-click on **UninstallZebraZXP7CardPrinterDriverapplication**.



The uninstallation can only be performed in Administrator mode. When prompted, enter the administrator password.

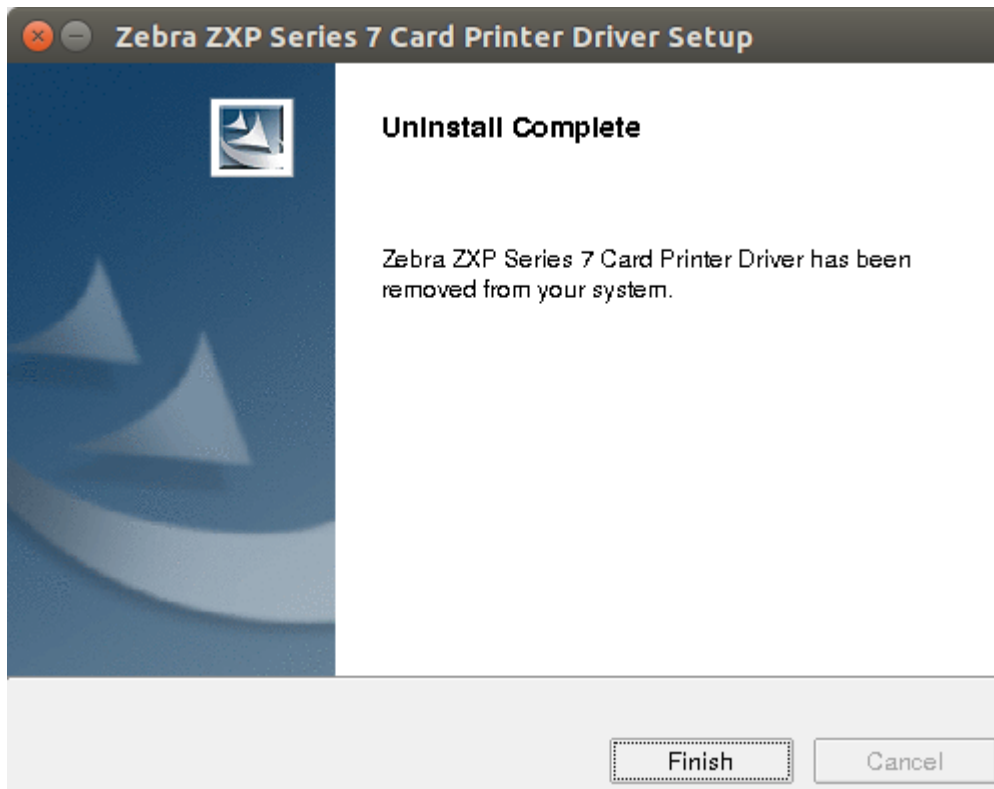


A confirmation dialog window will prompt you to continue the ununsatallation. Click Yes to continue, or click No to exit the uninstaller.



## Installing the Driver: Uninstall

At the Complete screen, click **Finish** to exit the uninstaller.



### Silent Installation from Terminal

Silent installation performs the USB printer setup by default. To install an Ethernet printer, use the Installation Wizard ([page 3](#)).

After extracting the files, follow the steps below to perform a silent installation:

**Step 1.** Open a Terminal window and change the directory to where the files were extracted.

**Step 2.** Type the following command:

```
sudo ./Unified_Zebra_ZXP7_Series_Card_Printer_Driver_x.x.x.x-Linux-x86_64-Install --mode silent
```

```
.0.17-Linux-x86_64-Install --mode siletn
[sudo] password for ganesh:
ganesh@ganesh-HP-Pro-3330-MT:~/Desktop/Zebra_WorkingCopy/ZXP57_Ubuntu/Installer/Source/output$ sudo ./Zebra_ZXP7_Series_Card_Printer_D
.0.17-Linux-x86_64-Install --mode silent
[sudo] password for ganesh:
Ubuntu System
This is Ubuntu System
installing files
'/usr/local/ZebraZXP7Driver/pdftozxp7pdf' -> '/usr/lib/cups/filter/pdftozxp7pdf'
'/usr/local/ZebraZXP7Driver/rastertoZxp7' -> '/usr/lib/cups/filter/rastertoZxp7'
'/usr/local/ZebraZXP7Driver/ZXPS7Config' -> '/etc/init.d/ZXPS7Config'
'/usr/local/ZebraZXP7Driver/zxp7usb' -> '/usr/lib/cups/backend/zxp7usb'
'/usr/local/ZebraZXP7Driver/10-ZebraZXPS7.rules' -> '/lib/udev/rules.d/10-ZebraZXPS7.rules'
'/usr/local/ZebraZXP7Driver/zxp7pnp' -> '/lib/udev/zxp7pnp'
'/usr/local/ZebraZXP7Driver/ZebraZXPS7Printer.ppd' -> '/usr/share/cups/model/ZebraZXPS7Printer.ppd'
jre1.8.0_111/lib/deplo/splash_11-lic.gif
jre1.8.0_111/lib/desktop/icons/HighContrast/16x16/apps/sun-jcontrol.png
jre1.8.0_111/lib/locale/zh_TW/LC_MESSAGES/
jre1.8.0_111/lib/desktop/icons/LowContrast/16x16/mimetypes/gnome-mime-application-x-java-jnlp-file.png
jre1.8.0_111/lib/security/blacklist
jre1.8.0_111/lib/desktop/icons/hicolor/16x16/apps/
jre1.8.0_111/lib/desktop/icons/hicolor/16x16/apps/sun-jcontrol.png
```



### Adding a USB Printer

At any time after the USB driver installation, any additional ZXP Series 7 printers will be added automatically.

### Adding an Ethernet Printer via Terminal Command

#### Command

```
# sudo lpadmin -p <printername> -E -v "socket://<printermode>/<printerIP>:9100" -P <ppdFilePathName>
```

#### Example

```
#sudo lpadmin -p "Zebra-ZXPS7-Ethernet-Printer-IP=10.3.9.140" -E -v  
socket://ZXPS32/10.3.9.140:9100 -P /usr/share/cups/model/ZebraZXPS7Printer.ppd
```





