

Mobile Parcel



ZEBRA

Installation Guide

ZEBRA and the stylized Zebra head are trademarks of Zebra Technologies Corporation, registered in many jurisdictions worldwide. All other trademarks are the property of their respective owners. ©2022 Zebra Technologies Corporation and/or its affiliates. All rights reserved.

Information in this document is subject to change without notice. The software described in this document is furnished under a license agreement or nondisclosure agreement. The software may be used or copied only in accordance with the terms of those agreements.

For further information regarding legal and proprietary statements, please go to:

SOFTWARE: zebra.com/linkoslegal.

COPYRIGHTS: zebra.com/copyright.

WARRANTY: zebra.com/warranty.

END USER LICENSE AGREEMENT: zebra.com/eula.

Terms of Use

Proprietary Statement

This manual contains proprietary information of Zebra Technologies Corporation and its subsidiaries ("Zebra Technologies"). It is intended solely for the information and use of parties operating and maintaining the equipment described herein. Such proprietary information may not be used, reproduced, or disclosed to any other parties for any other purpose without the express, written permission of Zebra Technologies.

Product Improvements

Continuous improvement of products is a policy of Zebra Technologies. All specifications and designs are subject to change without notice.

Liability Disclaimer

Zebra Technologies takes steps to ensure that its published Engineering specifications and manuals are correct; however, errors do occur. Zebra Technologies reserves the right to correct any such errors and disclaims liability resulting therefrom.

Limitation of Liability

In no event shall Zebra Technologies or anyone else involved in the creation, production, or delivery of the accompanying product (including hardware and software) be liable for any damages whatsoever (including, without limitation, consequential damages including loss of business profits, business interruption, or loss of business information) arising out of the use of, the results of use of, or inability to use such product, even if Zebra Technologies has been advised of the possibility of such damages. Some jurisdictions do not allow the exclusion or limitation of incidental or consequential damages, so the above limitation or exclusion may not apply to you.

Contents

About this Guide.....	4
Supported Configurations.....	4
Notational Conventions.....	5
Icon Conventions.....	5
Service Information.....	6
Installation.....	7
Updating Android.....	7
StageNow Installation.....	7
Installing via OS Update.....	7
Installing via Xpert Mode.....	12
EMM Installation.....	13
Generating an XML File.....	13
Installing via Airwatch.....	13
Installing via SOTI.....	15
Limitations.....	17

About this Guide

This guide describes how to install the Mobile Dimensioning (MD) Client onto a mobile device.

Supported Configurations

This section lists all supported device configurations and the associated installation files.

Certified Mobile Parcel Configurations

For Certified Mobile Parcel configurations, use the installation file for your region.

Table 1 Certified Mobile Parcel Configurations

Configuration	Region	Installation File
TC5301-0T1K6E200B-NA	United States	CMP_US_version_date.zip
TC58A1-3T1K6E201B-NA		
TC5301-0T1K6E200C-A6	European Union	CMP_EU_version_date.zip
TC58B1-3T1K6E208C-A6		
TC5301-0T1K6E200D-NA	Canada	CMP_CA_version_date.zip
TC58A1-3T1K6E208D-NA		
TC5301-0T1K6E200E-A6	Australia	CMP_AU_version_date.zip
TC58B1-3T1K6E208E-A6	New Zealand	
TC5301-0T1K6E200F-A6	UK and other regions	CMP_NN_version_date.zip
TC58B1-3T1K6E208F-A6		

Mobile Parcel Configurations

For all Mobile Parcel configurations (non-certified), use installation file:

`MP_non-certified_version_date.zip`

- TC5301-0T1K6E200A-A6
- TC5301-0T1K5E200A-NA
- TC5301-0T1K5E200A-A6

- TC5301-0T1K6E200A-NA
- TC58B1-3T1K5E2A8A-A6
- TC58A1-3T1K5E2A1A-NA
- TC58B1-3T1K6E2A8A-A6
- TC58A1-3T1K6E2A1A-NA

Notational Conventions

The following conventions are used in this document:

- **Bold** text is used to highlight the following:
 - Dialog box, window, and screen names
 - Drop-down list and list box names
 - Checkbox and radio button names
 - Icons on a screen
 - Key names on a keypad
 - Button names on a screen
- Bullets (•) indicate:
 - Action items
 - List of alternatives
 - Lists of required steps that are not necessarily sequential.
- Sequential lists (for example, those that describe step-by-step procedures) appear as numbered lists.

Icon Conventions

The documentation set is designed to give the reader more visual clues. The following visual indicators are used throughout the documentation set.



NOTE: The text here indicates information that is supplemental for the user to know and that is not required to complete a task.



IMPORTANT: The text here indicates information that is important for the user to know.



CAUTION: If the precaution is not heeded, the user could receive a minor or moderate injury.



WARNING: If danger is not avoided, the user CAN be seriously injured or killed.



DANGER: If danger is not avoided, the user WILL be seriously injured or killed.

Service Information

If you have a problem with your equipment, contact Zebra Global Customer Support for your region. Contact information is available at: zebra.com/support.

When contacting support, please have the following information available:

- Serial number of the unit
- Model number or product name
- Software type and version number

Zebra responds to calls by email, telephone, or fax within the time limits set forth in support agreements.

If your problem cannot be solved by Zebra Customer Support, you may need to return your equipment for servicing and will be given specific directions. Zebra is not responsible for any damages incurred during shipment if the approved shipping container is not used. Shipping the units improperly can possibly void the warranty.

If you purchased your Zebra business product from a Zebra business partner, contact that business partner for support.

Installation

Install the MD Client using StageNow or an EMM.

Updating Android

Before updating the Mobile Dimensioning client, make sure your device has the latest version of Android

- For detailed instructions, refer to the [Android 11 OS Update Instructions](#).

StageNow Installation

Install the MD Client via StageNow using the Xpert Mode or Perform OS Update wizards.

Installing via OS Update

The following instructions describe how to install the MD Client on a Zebra device using StageNow to perform an OS update. For more information on using StageNow, go to techdocs.zebra.com/stagenow.

Before you begin:

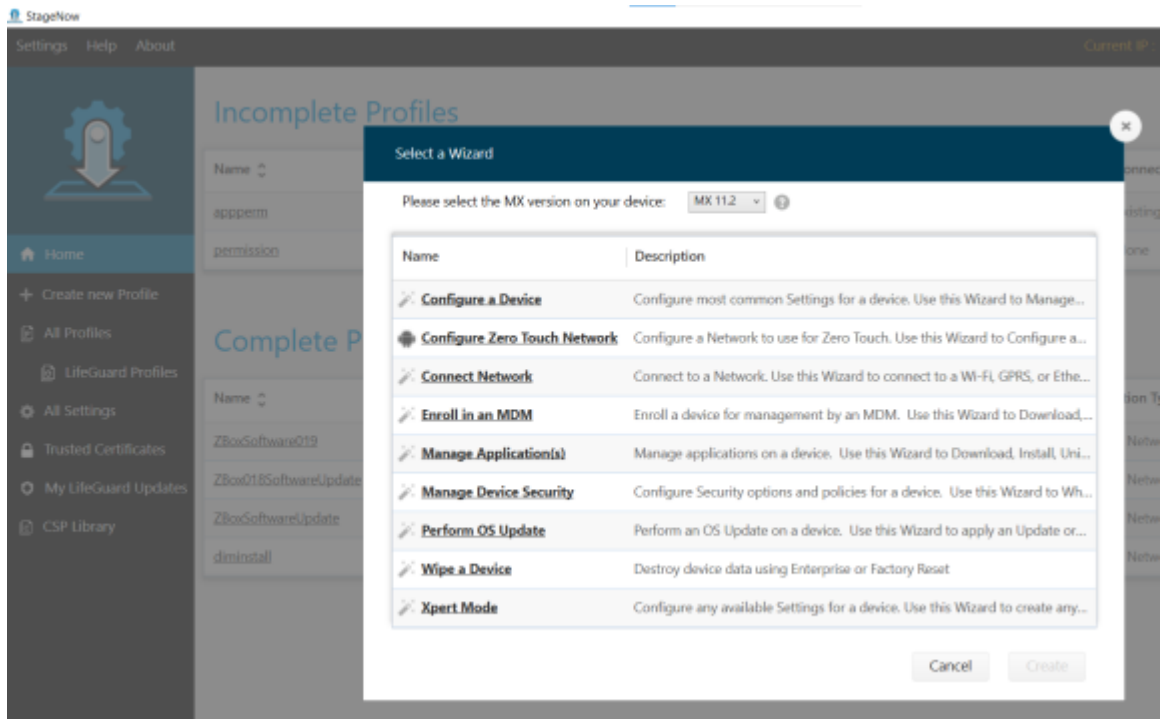
- Install StageNow version 5.5.0.1010 or later on your host computer. You can find the latest version at zebra.com/stagenow.
- Install the StageNow app on the target device.
- Make sure the host computer and target device are on the same Wi-Fi network.
- Download the appropriate installation file with the most recent version and date to your host computer. For a list of device configurations and the associated installation files, see [Supported Configurations](#) on page 4.



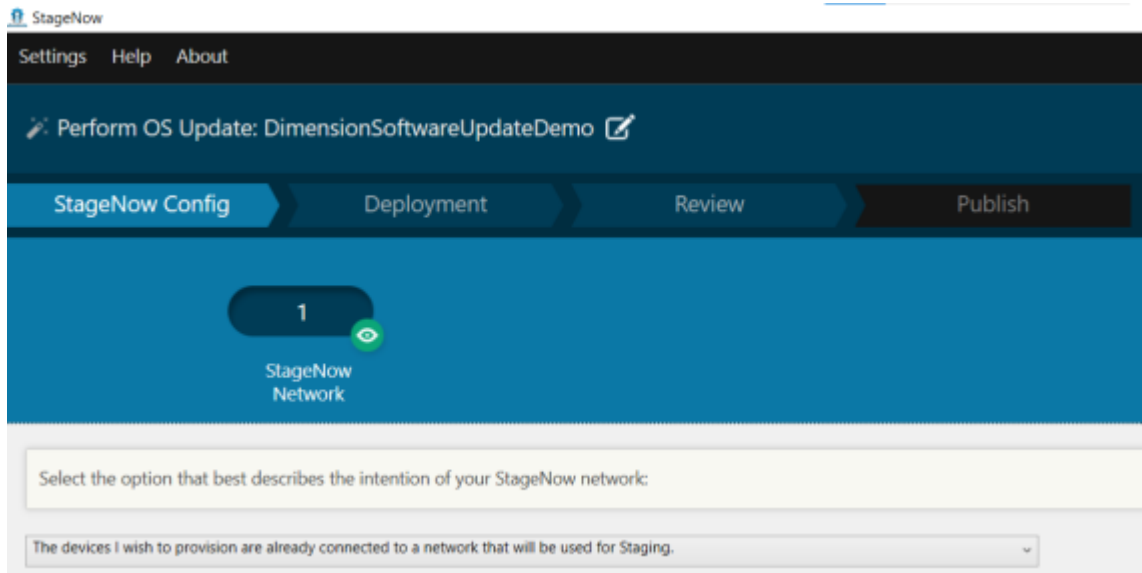
NOTE: Attempting to install the incorrect file causes the installation to fail.

1. On your host computer, open StageNow.
2. Select **Create New Profile**.
3. Select select the latest MX version.

4. Select **Perform OS Update > Create**.

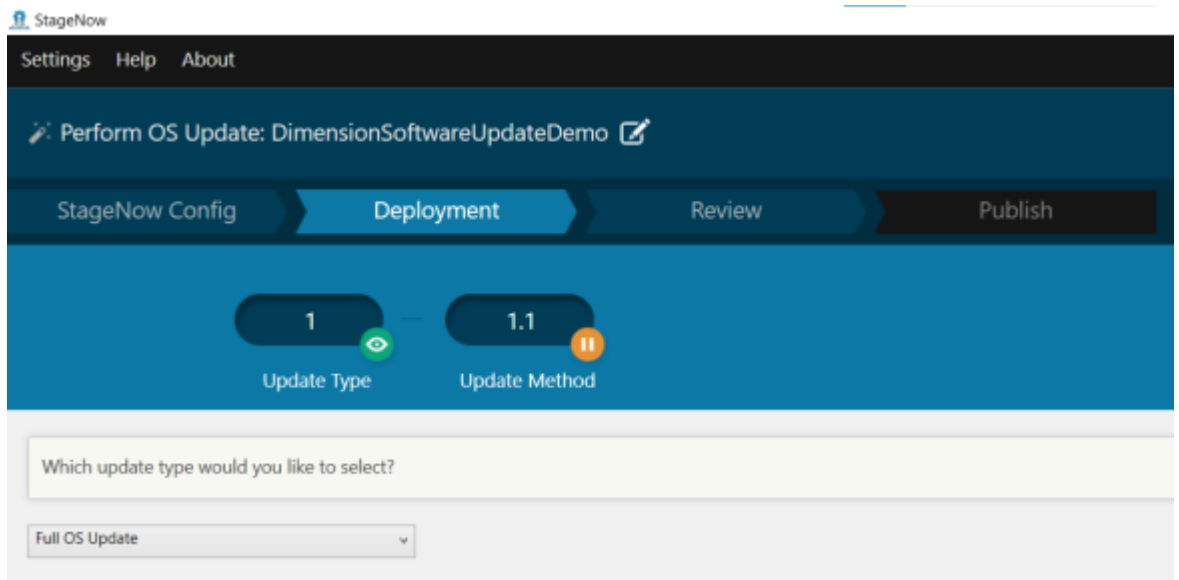


5. Enter the profile name **DimensionSoftwareUpdate**.
6. Select **Start**.
7. For **StageNow Network**, select **The devices I wish to provision are already connected to a network that will be used for Staging**.

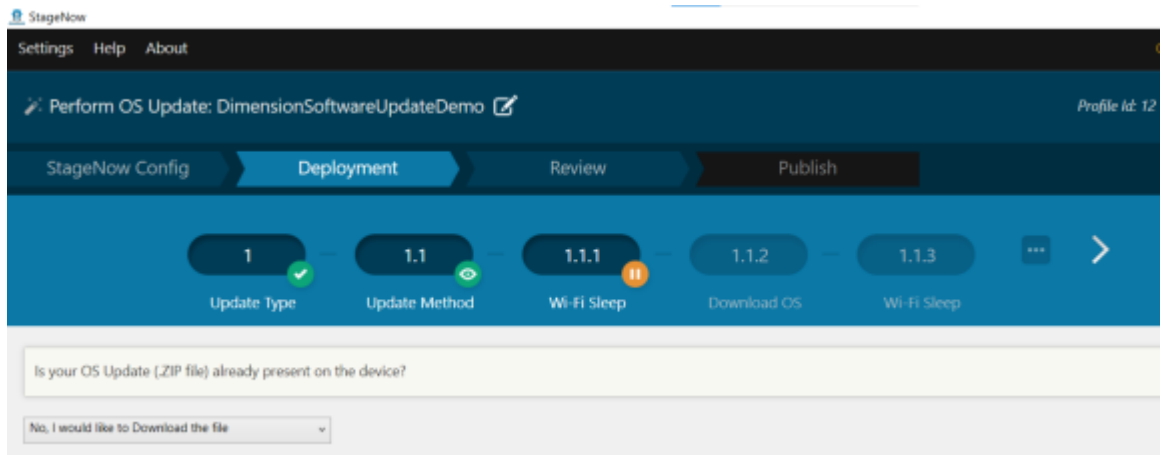


8. Select **Continue**.

- For **Update Type**, select **Full OS Update**.



- Select **Continue**.
- For **Update Method**, select **No, I would like to Download the file**.



- Select **Continue**.
- For **Wi-Fi Sleep**, select **yes**.
This prevents Wi-Fi from turning off while the file is downloading.

14. For **Download OS**, enter a target path and file name on the device.
This specifies where to save the installation file on the target device.
For example, to save the file to the device's SD card enter the following:

```
/sdcard/CMP_EU_0_18_0_0_20220406.zip
```

Create New Setting

Save Setting for Re-use ?

Target Path and File Name on Device ?

/sdcard/CMP_EU_0_18_0_0_20220406.zip

If the file is duplicate: ?

Replace the file in
the destination

Skip the file and
remove from the
source

Skip the file and
keep it at the
source

Source File Location ?

15. For **Source File Location**, select ... and choose the installation file.

Staging Server URI Selector

Staging Server:

Built In

Select a File

C:\Users\KGF684\Downloads\CMP_EU_0_18_0_0_202204

OK

Cancel

16. Select **OK** > **Continue**.
17. For **WIFI Sleep Policy after Downloading the OS Package**, select **No** > **Continue**.

18. Configure the settings on the **Apply Update** screen.
 - a) Uncheck **Save Setting for Re-use**.
 - b) Ensure **ZIP or URL File** has the correct path.
 - c) Set **Wake-Up Method** to **Do not change**.
 - d) Set **Wake-Up Action** to **Do not change**.

19. In the **Staging Profile** screen, select **Complete Profile**.

Type	Staging Client	Last Tested	Published	Latest Staged
PDF417 Recommended for 2D Scan Engines	<input checked="" type="checkbox"/> StageNow			
Linear Recommended for 1D Laser Scanner	<input type="checkbox"/> StageNow			
JS PDF417 Recommended for 2D Scan Engines	<input type="checkbox"/> StageNow			
JS Linear Recommended for 1D Laser Scanner	<input type="checkbox"/> StageNow			
Action	<input type="checkbox"/> Select	<input type="checkbox"/> Test <input type="button" value="Test"/>	<input type="checkbox"/> Publish <input type="button" value="Publish"/>	<input type="checkbox"/> Stage <input type="button" value="Stage"/>

20. In the **Staging Client** column, select the checkbox next to **PDF417**.

21. Select Test.

A barcode generates.

22. On the target device, open the StageNow app and scan the barcode.

The installation file is copied to the device and then the device restarts.

After the device restarts, wait about three minutes before using the the Mobile Parcel app while it updates.

Installing via Xpert Mode

The following instructions describe how to install the MD Client on a Zebra device using StageNow in Xpert mode. For more information on using StageNow, go to techdocs.zebra.com/stagenow.

Before you begin:

- Install StageNow version 5.5.0.1010 or later on your host computer. You can find the latest version at zebra.com/stagenow.
- Install the StageNow app on the target device.
- Make sure the host computer and target device are on the same Wi-Fi network.
- Download the appropriate installation file with the most recent version and date to your host computer. For a list of device configurations and the associated installation files, see [Supported Configurations](#) on page 4.



NOTE: Attempting to install the incorrect file causes the installation to fail.

1. On your host computer, open StageNow.
2. Select **Create New Profile**.
3. Select select the latest MX version.
4. Select **Xpert Mode > Create**.
5. Enter a profile name.
6. Select **Start**.
7. From the **Add/Edit** screen, select **PowerMgr**.
PowerMgr is added to the CONFIG tab.
8. Select **Add**.
9. For **OS Action**, select **OS Upgrade (Upgrade only, supported on Android Oreo and above)**.
10. In the **ZIP or UPL File** field, enter the path of the installation file on the device.

For example:

```
/sdcard/ CMP_US_0_21_0_0_20220602.zip
```

11. Select **Continue**.
12. On the **Review** screen, select **Complete Profiles**.
13. On the **Publish** screen, select **> PDF417 > Test**.

A test barcode is generated.

14. Using ADB, push the installation file to the SD card of the target device.

For example:

```
adb push CMP_US_0_21_0_0_20220602.zip /sdcard/
```

15. Use the target device to scan the Stage Now barcode.

EMM Installation

Using a configuration XML file generated in StageNow, you can install the MD Client via an EMM.

Generating an XML File

Before using an EMM to install MD Client, create an installation file using StageNow.

Before you begin, install StageNow version 5.5.0.1010 or later on your host computer. You can find the latest version at zebra.com/stagenow.

1. On your host computer, open StageNow.
2. Select **Create New Profile**.
3. Select the latest MX version.
4. Select **Xpert Mode > Create**.
5. Enter a profile name.
6. Select **start**.
7. From the **Add/Edit** screen, select **PowerMgr**.
PowerMgr is added to the CONFIG tab.
8. Select **Add**.
9. For **OS Action**, select **OS Upgrade (Upgrade only, supported on Android Oreo and above)**.
10. In the **ZIP or UPL File** field, enter the path of the installation file on the device.

For example:

```
/sdcard/CMP_US_0_21_0_0_20220602.zip
```

11. Select **Continue**.
12. On the **Review** screen, select **Complete Profiles**.
13. Select **Export for MDM** and save the generated XML file to the host computer.

Installing via Airwatch

The following steps describe how to install the MD Client using the Airwatch console.

Before you begin:

- Make sure the target device is enrolled with the Airwatch console.
- Create a configuration XML file in StageNow. See [Generating an XML File](#) on page 13.

- Download the appropriate installation file with the most recent version and date to your host computer. For a list of device configurations and the associated installation files, see [Supported Configurations](#) on page 4.



NOTE: Attempting to install the incorrect file causes the installation to fail.

1. Log in to the Airwatch console.
2. Select **Devices > Provisioning > Components > Files/Actions**.
3. Select **Add Files/Actions > Android**.
4. In the **General** tab, enter a descriptive name.
5. Select the **Files** tab.
6. Select **Add Files** and add the installation file.

For example:

```
CMP_US_0_21_0_0_20220602.zip
```

7. Select **Save** and add the download path.

For example:

```
/sdcard/CMP_US_0_21_0_0_20220602.zip
```

8. Select **Save**.
9. Select **Add Files** and add the XML configuration file generated in StageNow.
10. Select **Save** and add the download path.

For example:

```
/sdcard/DIMENSIONING_US_21.xml
```

11. Select the **Manifest** tab.
12. Select **Add Action**.
13. Select **Apply Custom Setting**.
14. Select **Choose File** and add the XML configuration file.
15. Select **Save**.
16. Select **Product List View > Add Product**.
17. Select the Android icon.
18. Enter a name.
19. Select the **Smart Group** field and add the group.
The device is pushed to the selected group.
20. Select **Manifest > Add**.
21. In the **Action(s) to Perform** field, select **File/Action - Install**.

22. In the **File/Actions** field, select the installation ZIP file.

For example:

```
CMP_US_0_21_0_0_20220602.zip
```

23. Select **Save**.
24. Select **Activate**.

Installing via SOTI

The following steps describe how to install the MD Client using SOTI MobiControl.

Before you begin:

- Create a configuration XML file in StageNow. See [Generating an XML File](#) on page 13.
- Download the appropriate installation file with the most recent version and date to your host computer. For a list of device configurations and the associated installation files, see [Supported Configurations](#) on page 4.



NOTE: Attempting to install the incorrect file causes the installation to fail.

1. Log in to the SOTI MobiControl console.
2. From the three line menu, choose **Packages > DOWNLOAD PACKAGE STUDIO**.
The Package Studio installation file is downloaded to the host computer.
3. On the host computer, launch the downloaded Package Studio file.
4. From Package Studio, select **Create New Package Project**.
The **New Package Wizard** displays.
5. In the **Project Name** field, enter a descriptive name.
6. In the **Platform** drop down menu, select **Android**.
7. Select **Next**.
8. Select **Add files** and choose the installation file.

For example:

```
CMP_US_0_21_0_0_20220602.zip
```

9. Select **OK**.
10. Select **Add Files** and add the XML configuration file generated in StageNow.
11. Select **Next > Finish**.
12. In the **Project** window, right click on the project name and select **Add Script**.
13. Select **OK**.

14. In the **Post-Install** window, delete all the text and replace it with the following command.

```
mxconfig /sdcard/CONFIG_FILE.xml
```

Where CONFIG_FILE is the name of the configuration file created in StageNow.

15. From the main menu, select **Project > Build package**.
16. From the **Output Window**, copy the path where the package is saved.
For example:

```
C:\Users\default\Documents\MobiControl Packages\ZBOX_US_18\built  
\DIMENSIONING_US_21.pcg
```

17. From the SOTI MobiControl console, select the three line menu and choose **Packages > New Package > Android Plus**.
18. Select **Browse file** and enter the path to the package file in the search field.
For example:

```
C:\Users\default\Documents\MobiControl Packages\ZBOX_US_18\built  
\DIMENSIONING_US_21.pcg
```

19. Select **UPLOAD**.
20. From the three line menu, select **Profiles > New Profile > Android > Work Managed**.
21. Enter a descriptive name.
22. Go to the **PACKAGES** tab and select +.
23. From the **SELECT PACKAGES** window, select the package.
For example, DIMENSIONING_US_21.
24. Select **ADD TO PROFILE > SAVE > SAVE > Assign**.

Limitations

It is not recommended to use Android split-screen mode while dimensioning.

