



ZebraDesigner™ Fonts and Graphics Downloader

User Guide



© 2009 ZIH Corp. The copyrights in this manual and the software and/or firmware in the printer described therein are owned by ZIH Corp. and Zebra's licensors. Unauthorized reproduction of this manual or the software and/or firmware in the printer may result in imprisonment of up to one year and fines of up to \$10,000 (17 U.S.C.506). Copyright violators may be subject to civil liability.

This product may contain ZPL[®], ZPL II[®], and ZebraLink[™] programs; Element Energy Equalizer[™] Circuit; E^{3™}; and Monotype Imaging fonts. Software © ZIH Corp. All rights reserved worldwide.

ZebraLink, Element Energy Equalizer, E³ and all product names and numbers are trademarks, and Zebra, the Zebra head graphic, ZPL and ZPL II are registered trademarks of ZIH Corp. All rights reserved worldwide.

All other brand names, product names, or trademarks belong to their respective holders. For additional trademark information, please see "Trademarks" on the product CD.

Proprietary Statement This manual contains proprietary information of Zebra Technologies Corporation and its subsidiaries ("Zebra Technologies"). It is intended solely for the information and use of parties operating and maintaining the equipment described herein. Such proprietary information may not be used, reproduced, or disclosed to any other parties for any other purpose without the express, written permission of Zebra Technologies Corporation.

Product Improvements Continuous improvement of products is a policy of Zebra Technologies Corporation. All specifications and designs are subject to change without notice.

Liability Disclaimer Zebra Technologies Corporation takes steps to ensure that its published Engineering specifications and manuals are correct; however, errors do occur. Zebra Technologies Corporation reserves the right to correct any such errors and disclaims liability resulting therefrom.

Limitation of Liability In no event shall Zebra Technologies Corporation or anyone else involved in the creation, production, or delivery of the accompanying product (including hardware and software) be liable for any damages whatsoever (including, without limitation, consequential damages including loss of business profits, business interruption, or loss of business information) arising out of the use of, the results of use of, or inability to use such product, even if Zebra Technologies Corporation has been advised of the possibility of such damages. Some jurisdictions do not allow the exclusion or limitation of incidental or consequential damages, so the above limitation or exclusion may not apply to you.

Contents



Contents	3
1 • Introduction	7
Introduction	8
2 • Setting Up the Zebra Fonts and Graphics Downloader	9
User Interface	10
Main Window	10
Menus	10
Font and Graphic List Box	10
Memory Card Slot Selection	11
Preview Area	11
Status Line	11
Customizing the Software	12
3 • Working with the Application	13
Creating Memory Card Configuration File	14
Adding Objects to the Memory Card	15
Adding Fonts to the Memory Card	15
Adding Pictures to the Memory Card	16
Downloading Objects to the Memory Card	17
Removing Objects from the Memory Card	18
Using Toolbox	19

4 • Interface Reference	21
Card Menu	23
New	23
Open	23
Save As	23
Close	23
Memory Card Information	24
Printer Selection	25
Format	25
Reload memory card	25
Download All	25
Status Print	25
Exit	26
Update Printer Settings and Return to the Server Application	26
View Menu	26
Toolbox	26
Fonts	26
Pictures	26
Fonts Menu	27
Add	27
Delete	27
Download	27
Remove	27
Edit	27
Test Print	27
Pictures Menu	28
Add	28
Delete	28
Download	28
Remove	28
Edit	28
Test Print	28
Tools Menu	29
Options	29
Help Menu	30
Contents	30
On the Web	30
About	30

- 5 • Technical Support 31**
 - Online Support 32
 - Contact Information 33
- Index 35**



Notes • _____



Introduction

Contents

Introduction 8

Introduction

The Zebra Fonts and Graphics Downloader is a software package dedicated to preparing and downloading TrueType fonts to the memory installed in printers. Fonts that are downloaded to the memory card are treated as internal printer objects. This enables much faster printing because there is no need to transfer text to the printer at print time.

Zebra Fonts and Graphics Downloader can:

- Add, edit, and view data prepared for download on memory.
- Check the available memory space before downloading.
- Share the information about the contents of the memory card with the ZebraDesigner Pro labeling software.

Print the downloaded data from the memory.



Setting Up the Zebra Fonts and Graphics Downloader

Contents

User Interface.	10
Main Window	10
Menus	10
Font and Graphic List Box	10
Memory Card Slot Selection	11
Preview Area	11
Status Line	11
Customizing the Software	12

User Interface

Main Window

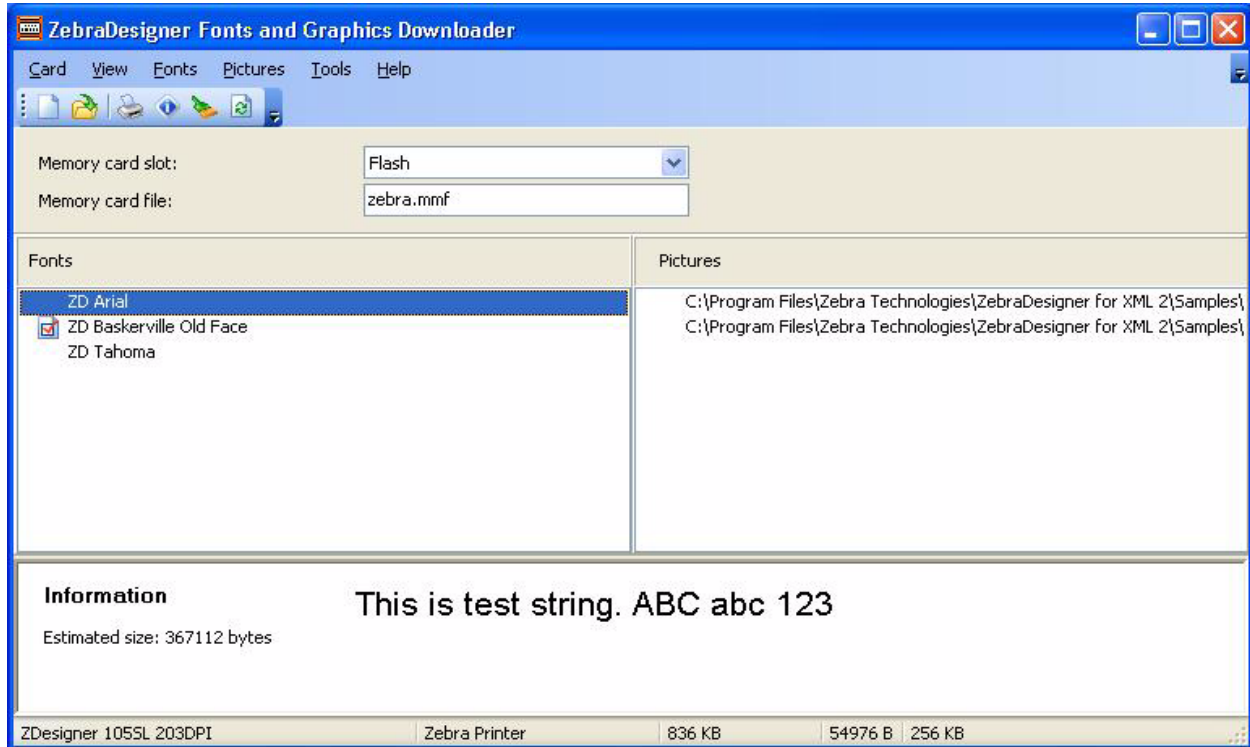



Figure 1 • Fonts and Graphics Downloader window

Menus

All actions can be done by using pull-down menus.

Font and Graphic List Box

All currently selected fonts and graphics are shown in these two list boxes. You can access pop up menu by pressing right mouse button. Popup menu contains the same commands as corresponding main menu (Fonts or Graphics).

If there is an  icon displayed in front of a font name, that font is already downloaded to the memory card.

Memory Card Slot Selection

Here you can select to which memory location in the printer you want to store fonts and pictures.

Note • Different printers have different memory card slots.

Preview Area

In the preview area you can review the selected font or graphic files. On the left side you can see basic dimensions and memory size of selected objects (fonts or graphics).

Status Line

In the status line, you can see the currently selected printer.

The fields contain the information about the size of selected and downloaded objects, and the memory card size.

Customizing the Software

To change the preferences of the application, do the following:

1. From the **Tools** menu, select **Options**.
The *Options* dialog box opens.
2. You can change the options regarding the default folders and test string.

To customize the menus and toolbars, do the following:

3. From the **Tools** menu, select **Customize**.
The *Customize* dialog box opens.
4. Make modifications to the settings.
5. Click the **OK** button.

You can also change the positions of the toolbars onscreen. Drag them to the new position.



Working with the Application



Contents

Creating Memory Card Configuration File	14
Adding Objects to the Memory Card	15
Adding Fonts to the Memory Card	15
Adding Pictures to the Memory Card	16
Downloading Objects to the Memory Card	17
Removing Objects from the Memory Card	18
Using Toolbox	19

Creating Memory Card Configuration File

The memory card configuration files store the information about the objects currently on the memory card. Each configuration file is linked to a thermal printer. When you are designing a label in ZebraDesigner Pro or ZebraDesigner, the memory card configuration file provides the information about downloaded objects. ZebraDesigner Pro and ZebraDesigner then knows which objects can be recalled from the memory card.

To create new memory card configuration file, do the following:

1. From the **Card** menu, select **Printer Selection**.
The *Select Printer* dialog box opens.
Note • You can also click the  button in the toolbox.
2. Select the printer from the list. Make sure to select the ZebraDesigner printer driver.
3. From the list, select the **Memory card slot** type.
Note • The available card slot types change accordingly to the selected printer.
4. From the **Card** menu, select **New**.
The *New card* dialog box opens.
Note • You can also click the  button in the toolbox.
5. Type the name of the new memory card configuration file and click the **Save** button.
The *Card Setup* dialog box opens.
6. Enter the description of the memory card (optional) and select the proper card size.
7. Click the **OK** button.

You have created an empty memory card configuration file.

You can start selecting the fonts to be downloaded to the memory card.

Adding Objects to the Memory Card

Adding Fonts to the Memory Card

To add fonts to the memory card, do the following:

1. Create your memory card configuration file.
2. From the **Fonts** menu, select **Add**.
The *Download Mode* dialog box opens.
3. Select the font download mode.
4. If you have selected **Download All Characters**, then select the font you want to download.
5. If you choose **Download Selected Characters**:
 - a. Select the font you want to use.
 - b. Click **OK**.
 - c. Click the **Characters** button to select specific characters.
 - d. Select the characters you want to download.
 - e. Click **OK** twice.
6. Repeat step 2 through 5 to select additional fonts.
7. Make sure the printer is connected to the computer.
8. When the *Confirm* dialog box appears, click **Yes** to download the fonts to the printer.
9. Review the License Agreement.
10. When the fonts are downloaded to the printer and stored to the memory card, they can then be used on label designs.

Adding Pictures to the Memory Card


To add pictures to the memory card, do the following:

1. Create you memory card configuration file.
2. Select the command **Add** in the Pictures menu.
The *Open* dialog box opens.
3. Select the picture from the hard drive you want to download.
You can preview the selected picture in the preview area.
4. Repeat the steps from step 2 and 3 to select additional pictures.
5. Make sure the printer is connected to the computer.
6. Select the command **Download All** from the **Card** menu.
The pictures are downloaded to the printer and stored to the memory card. You can use them on your label.


Downloading Objects to the Memory Card

The defined objects can be downloaded one at a time, or all at the same time. It depends on the selected printer.

To download all objects to the memory card, do the following:

1. From the **Card** menu, select **Open**.
Note • You can also click the  button in the toolbox.
2. Select the memory card file that contains the objects you want to download to the memory card and click on the **Open** button.
3. Make sure the printer is connected to the computer.
4. From the **Card** menu, select **Download All**.

To selectively download objects to the memory card, do the following:



1. From the **Card** menu, select **Open**.
Note • You can also click the  button in the toolbox.
2. Select the memory card file that contains the objects you want to download to the memory card and click on the **Open** button.
3. Make sure the printer is connected to the computer.
4. Select the object you want to download to the memory card.
5. If you picked a font, select **Download** from the **Fonts** menu.
The object is downloaded to the memory card.
6. If you picked a picture, select **Download** from the **Picture** menu.
The object is downloaded to the memory card.
7. Repeat [step 1](#) through [step 6](#) for the other objects you want to download.

Removing Objects from the Memory Card


Once the objects have been downloaded to the memory card, you cannot selectively remove them on all printers.

If the printer does not support selective object removal, the only method is to format the memory card and download again, all the objects that you still need.

Do the following:

1. From the **Card** menu, select **Open**.
Note • You can also click the  button in the toolbox.
2. Select the memory card file that contains the objects you want to remove from the memory card and click on the **Open** button.
3. Make sure the printer is connected to the computer.
4. From the **Card** menu, select **Format**.
The contents of the memory card will be erased.
Note • You can also click the  button in the toolbox.

If the printer does support the selected object removal, do the following:

1. Select the **Open** command in the **Card** menu.
Note • You can also click the  button in the toolbox.
2. Select the memory card file that contains the objects you want to remove from the memory card and click the **Open** button.
3. Select the object you want to remove from the memory card.
4. If you picked a font, select **Delete** from the **Fonts** menu.
The object is removed from the list.
5. If you picked a picture, select **Delete** from the **Picture** menu.
The object is removed from the list.
6. Repeat [step 1](#) through [step 6](#) for the other objects you want to delete.







Using Toolbox

Use the toolbox to have quick access to shortcuts for the commands

If you do not see the toolbox, from the **View** menu, select **Toolbox**. The toolbox will display under the menus.

Note • You can change the position of the toolbox and dock to any other position.

These are the buttons in the toolbox:

	Create new memory card.
	Open existing memory card.
	Select printer where you want to download objects.
	Display the information about the memory card.
	Format the memory card in the selected memory slot.
	Reload the contents of the memory card. Send all objects to the memory card.



Notes • _____



Interface Reference

Contents

Card Menu	23
New	23
Open	23
Save As	23
Close	23
Memory Card Information	24
Printer Selection	25
Format	25
Reload memory card	25
Download All	25
Status Print	25
Exit	26
Update Printer Settings and Return to the Server Application	26
View Menu	26
Toolbox	26
Fonts	26
Fonts Menu	27
Add	27
Delete	27
Download	27
Remove	27
Edit	27
Test Print	27

Contents (Continued)

Pictures Menu 28
 Add. 28
 Delete. 28
 Download. 28
 Remove 28
 Edit. 28
 Test Print 28
Tools Menu. 29
 Options. 29
Help Menu 30
 Contents. 30
 On the Web 30
 About 30

Card Menu

New

Creates a new memory card file.

The memory card file you create will be connected to the currently selected memory slot. For every memory slot in the printer, a different memory card file can exist.

Note • Make sure that you have the correct printer and memory slot defined before you select this command. If the printer doesn't support memory cards, this command will be disabled.

Open

Opens the existing memory card file and connects it to the currently active memory slot.

Save As

Saves current memory card file in the new file name.

Note • This command is used only to make a copy of an existing memory card file. When you create the memory file, all the changes that you make are automatically saved.

Close

Closes the current memory card file.

Memory Card Information

In this dialog, change the settings of the memory card in the currently selected memory slot.

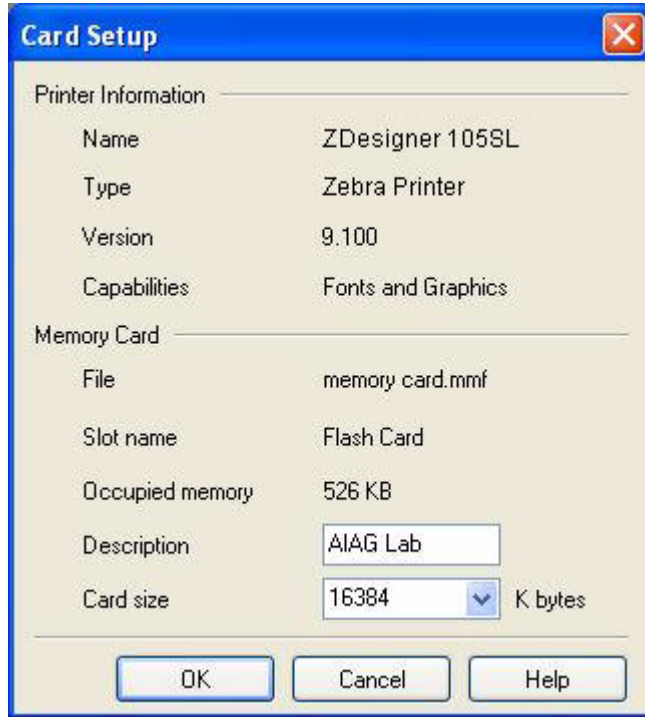


Figure 2 • MemMaster Card Setup dialog box

Printer information: In this section, you can find more information about the currently selected printer. You can see the major properties of the printer driver.

Memory Card: In this section, you find out more information about the currently selected memory slot.

- **Description:** Enter the description of the memory card.
- **Card size:** Select the size of your memory card (in kilobytes).

Printer Selection

This command displays a printer selection dialog box where you can select your printer. The objects will be downloaded to this printer.

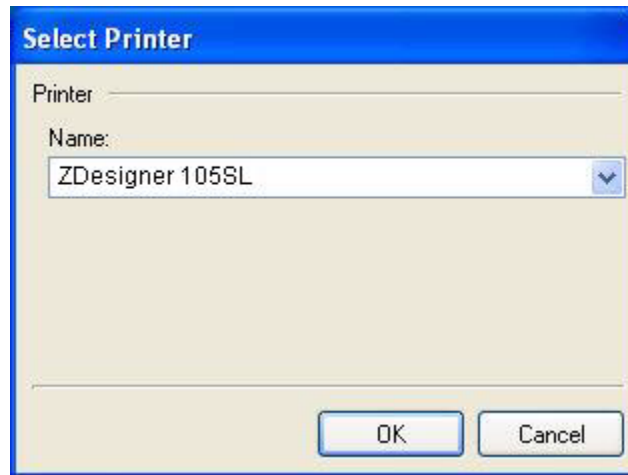


Figure 3 • Printer Selection dialog box

Format

Important • Formatting erases all the data on the memory card.

This command will format the memory card so that it is prepared to download data to the memory card.

Reload memory card

When this command is executed, the program formats the memory card, and then reloads all already downloaded data to the selected memory card.

Note • You can use this option to make duplicates of the memory cards.

Download All

This command downloads all the fonts and pictures in the current configuration file to the memory card.

Status Print

Prints a test label with basic information about the downloaded objects.

Exit

This command will close the program.

Note • When you will exit the program, the Windows operating system does not know about the changes you have made to the memory card. Before using the downloaded graphics or fonts, you will have to notify the appropriate printer driver about the changes. If this is not done, you will not be able to select downloaded pictures or graphics. Once this is done, the printer driver automatically updates the changes on the memory card.

You should also be aware that the labeling application saves printer settings in each .LBL file. The printer settings have to be updated in all .LBL files, connected to the selected printer, if you want to use graphics and fonts on the memory card. For more information, refer to the documentation of labeling application and printer drivers.

Update Printer Settings and Return to the Server Application

Select this command to apply all changes you have made and return back to label design environment.

View Menu

Toolbox

Enable or disable toolbox.

Fonts

Enable or disable the font box in the main area.

Pictures

Enable or disable the pictures in the main area.

Fonts Menu

Add


Adds Windows fonts to the configuration file.

How the fonts are downloaded depends on your printer. Some printers can accept the whole font file (.TTF). In this case, the font on the label can be used in any point size. For other printers, the selected characters are converted into pictures and downloaded as pictures into the printer.

Delete

This command deletes the selected font from the memory in the printer and also removes it from the configuration file.

Download

The highlighted fonts are downloaded to the memory card. Once the font is downloaded the  icon appears in front of the font name.

Note • To download all selected fonts and pictures, select the command Download All from the **Card** menu.

Remove

This command deletes the selected font from the memory in the printer. The font still remains listed in the configuration file.

Note • The font must already be downloaded to the printer memory for this command to be accessible.

Edit

Edits the selected font. You can change which characters from the selected font will be downloaded to the memory card.

Test Print

Prints the selected font on the printer.

Note • The selected object must already be downloaded in the memory card or this option is not available.

Pictures Menu

Add


This command adds a new graphic to configuration file. The file must already exist on your disk and must be in one of the supported graphics formats.

Add pictures from your hard disk to the configuration file.

Delete

This command deletes the selected picture from the memory in the printer and also removes it from the configuration file.

Download

The highlighted pictures are downloaded to the memory card. Once the picture is downloaded the  icon appears in front of its name.

Note • To download all selected fonts and pictures, select the command Download All from the **Card** menu.

Remove

This command deletes the selected picture from the memory in the printer.

Note • The picture must already be downloaded to the printer memory for this command to be accessible.

Edit

With this command you can choose other graphic instead of selected one.

Test Print

Prints the selected picture on the printer.

Note • The selected object must already be downloaded in the memory card or this option is not available.

Tools Menu

Options



Figure 4 • Properties dialog box

Folder: Define default folders for file storage. The application will first check these folders when looking for Pictures or memory card configuration files.

Test String: Type in the string you want to use with Test Print.

Help Menu

Contents

The Choose Contents command opens the help file. The online help provides a comprehensive screen that summarizes the contents of the Help system.

Each of the headings on the contents screen is an expanding list. When you click the highlighted underlined text, it displays additional help topics about the topic.

On the Web

Opens the Zebra web site (<http://www.zebra.com>).

About

The Choose About command displays the About Font Downloader dialog box showing version, serial number, and copyright information.



Technical Support

Contents

Online Support 32
Contact Information 33

Online Support

You can find the latest builds, updates, work-arounds for problems, and Frequently Asked Questions (FAQ) under the Support section on the Zebra Web site.

Contact Information

Technical Support via the Internet is available 24 hours per day, 365 days per year.

Web Site: www.zebra.com

E-mail Back Technical Library:

E-mail address: emb@zebra.com

Subject line: Emaillist

Self Service Knowledge Base: www.zebra.com/knowledgebase

Online Case Registration: www.zebra.com/techrequest

Which Department Do You Need?	The Americas	Europe, Middle East, and Africa	Asia Pacific and India
Regional Headquarters	Zebra Technologies Corporation 475 Half Day Road, Suite 500 Lincolnshire, IL 60069 USA T: +1 847 634 6700 Toll-free +1 866 230 9494 F: +1 847 913 8766	Zebra Technologies Europe Limited Dukes Meadow Millboard Road Bourne End Buckinghamshire, SL8 5XF United Kingdom T: +44 (0) 1628 556000 F: +44 (0) 1628 556001	Zebra Technologies Asia Pacific Pte. Ltd. 120 Robinson Road #06-01 Parakou Building Singapore 068913 T: + 65 6858 0722 F: +65 6885 0838
Technical Support For questions on the operation of Zebra equipment and software, please call your distributor. For additional assistance, contact us. <i>Please have your model and serial numbers available.</i>	T: +1 877 ASK ZEBRA (275 9327) F: +1 847 913 2578 Hardware: ts1@zebra.com Software: ts3@zebra.com <i>Kiosk printers:</i> T: +1 866 322 5202 E: kiosksupport@zebra.com	T: +44 (0) 1628 556039 F: +44 (0) 1628 556003 E: Tseurope@zebra.com	T: +65 6858 0722 F: +65 6885 0838 E: China: tschina@zebra.com <i>All other areas:</i> tsasiapacific@zebra.com
Repair Service Department For back-to-base service and repair.	T: +1 877 ASK ZEBRA (275 9327) F: +1 847 821 1797 E: repair@zebra.com To request a repair in the U.S., go to www.zebra.com/repair .	T: +44 (0) 1772 693069 F: +44 (0) 1772 693046 New requests: ukrma@zebra.com Status updates: repairupdate@zebra.com	T: +65 6858 0722 F: +65 6885 0838 E: China: tschina@zebra.com <i>All other areas:</i> tsasiapacific@zebra.com
Technical Training Department For Zebra product training courses.	T: +1 847 793 6868 T: +1 847 793 6864 F: +1 847 913 2578 E: ttamerica@zebra.com	T: +44 (0) 1628 556000 F: +44 (0) 1628 556001 E: Eurtraining@zebra.com	T: + 65 6858 0722 F: +65 6885 0838 E: China: tschina@zebra.com <i>All other areas:</i> tsasiapacific@zebra.com
Inquiry Department For product literature and distributor and dealer information.	T: +1 877 ASK ZEBRA (275 9327) E: inquiry4@zebra.com	T: +44 (0) 1628 556037 F: +44 (0) 1628 556005 E: mseurope@zebra.com	E: China: GCmarketing@zebra.com <i>All other areas:</i> APACchannelmarketing@zebra.com
Customer Service Department (US) Internal Sales Department (UK) For printers, parts, media, and ribbon, please call your distributor or contact us.	T: +1 877 ASK ZEBRA (275 9327) E: clientcare@zebra.com	T: +44 (0) 1628 556032 F: +44 (0) 1628 556001 E: cseurope@zebra.com	T: +65 6858 0722 F: +65 6885 0836 E: China: order-csr@zebra.com <i>All other areas:</i> csasiapacific@zebra.com
Key:	T: Telephone F: Facsimile E: E-mail		



Notes • _____

Index



A

- About 30
- About Font Downloader dialog 30
 - displays 30
- Add 15, 27, 28
 - Fonts 15
 - Pictures 15
- Adds Windows 27

C

- Card menu 14, 17, 18
- Card Setup dialog 14
- Choose About 30
- Choose Contents 30
- Close 23
 - Font Data dialog 15
- Contact Information 33
- Contents 30
- Creating 14
 - Memory Card Configuration File 14
- Customize 12
 - Software 12
- Customize dialog 12

D

- Delete 27, 28
- Displays 30
 - About Font Downloader dialog 30
- Download 8, 17, 27, 28
 - Objects 17
 - TrueType 8
- Download All 15, 17, 25, 27

E

- Edit 27, 28
- Exit 26

F

- FAQ 32
- File menu 14, 15, 16, 17, 27, 28
- Font Data dialog 15
- Font Downloader 8
- Font Downloader window 10
- Font List Box 10
- Fonts 15, 26
 - Adding 15
- Fonts menu 15, 17, 18
- Format 18, 25
- Frequently Asked Questions 32

H

- Help 30

I

- Introduction 8

L

- LBL file 26
- liability 2
- Looking 29
 - Pictures 29

M

- Main Window 10
- MemMaster Card Setup dialog 24
- Memory 14
 - select 14
- Memory Card 15, 17, 18, 24
- Memory Card Configuration File 14
 - Creating 14
- Memory Card Information 24
- Memory Card Slot Selection 11
- Menus 10

N

- New 14, 23

O

- Objects 17, 18
 - Downloading 17
 - Removing 18
- OK button 12, 14, 15
- Online 30
- Online Support 32
- Open 17, 18, 23, 30
 - Select 18
 - Zebra 30
- Open button 17, 18
- Open dialog 15
- Options 12, 29
- Options dialog 12

P

- Pictures 15, 29
 - Adding 15
 - looking 29
- Pictures menu 15
- Popup 10
- Preview Area 11
- Printer Selection 14, 25
- Printer Selection dialog 25

R

- Related Topics button 14, 15
- Reload memory card 25
- Remove 18, 27, 28
 - Objects 18

S

- Save As 23
- Save button 14
- Select 14, 18
 - Memory 14
 - Open 18
 - ZebraDesigner 14
- Select Printer dialog 14
- Software 12
 - Customizing 12
- Status Line 11
- Status Print 25
- Support 32

T

- Test Print 27, 28, 29
- Test String 29
- Toolbars 12
- Toolbars onscreen 12
- Toolbox 19, 26
- Tools menu 12
- TrueType 8
 - downloading 8
- TTF 27

U

- Using Toolbox 19

V

- View menu 19

W

- Web 30
- Work-arounds 32

Z

- Zebra 30
 - Opens 30
- Zebra Web site 32
- ZebraDesigner 14
 - select 14
- ZebraDesigner Font Downloader 8
- ZebraDesigner Pro 8, 14



Zebra Technologies Corporation

Zebra Technologies Corporation
475 Half Day Road, Suite 500
Lincolnshire, IL 60069 USA
T: +1 847 634 6700
Toll-free +1 866 230 9494
F: +1 847 913 8766

Zebra Technologies Europe Limited

Dukes Meadow
Millboard Road
Bourne End
Buckinghamshire, SL8 5XF, UK
T: +44 (0)1628 556000
F: +44 (0)1628 556001

Zebra Technologies Asia Pacific, LLC

120 Robinson Road
#06-01 Parakou Building
Singapore 068913
T: +65 6858 0722
F: +65 6885 0838

<http://www.zebra.com>