

Chevy Tahoe Installation Instructions

1) Carefully remove the trim panel as shown using trim panel removal tools to avoid damage.



2) There are many retaining clips so work slowly all around the edges to release .



For more information, contact your local Motion Reseller or Motion Representative.



Chevy Tahoe Installation Instructions

3) Remove the upper right radio retaining screw as shown.



4) Remove the upper left radio retaining screw as shown.



For more information, contact your local Motion Reseller or Motion Representative.

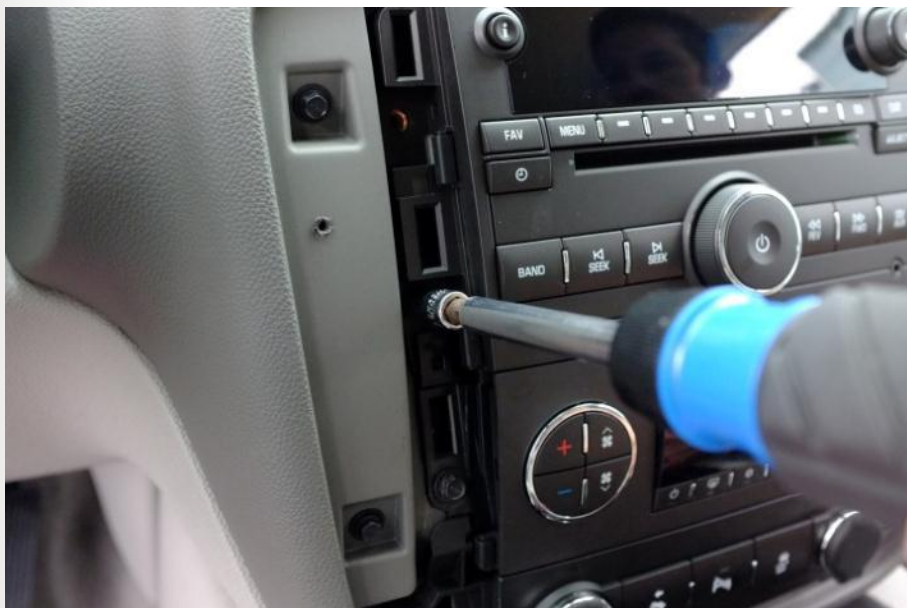


Chevy Tahoe Installation Instructions

5) Remove the lower right radio retaining screw as shown.



6) Remove the lower left radio retaining screw as shown.



For more information, contact your local Motion Reseller or Motion Representative.

Chevy Tahoe Installation Instructions

7) Remove both heater control retaining screws. Only right hand screw is pictured.



8) Remove both switch panel retaining screws. Only left hand screw is pictured.



For more information, contact your local Motion Reseller or Motion Representative.



Chevy Tahoe Installation Instructions

9) Remove the left hand fascia retaining screw as shown.



10) Remove the right hand fascia retaining screw as shown.



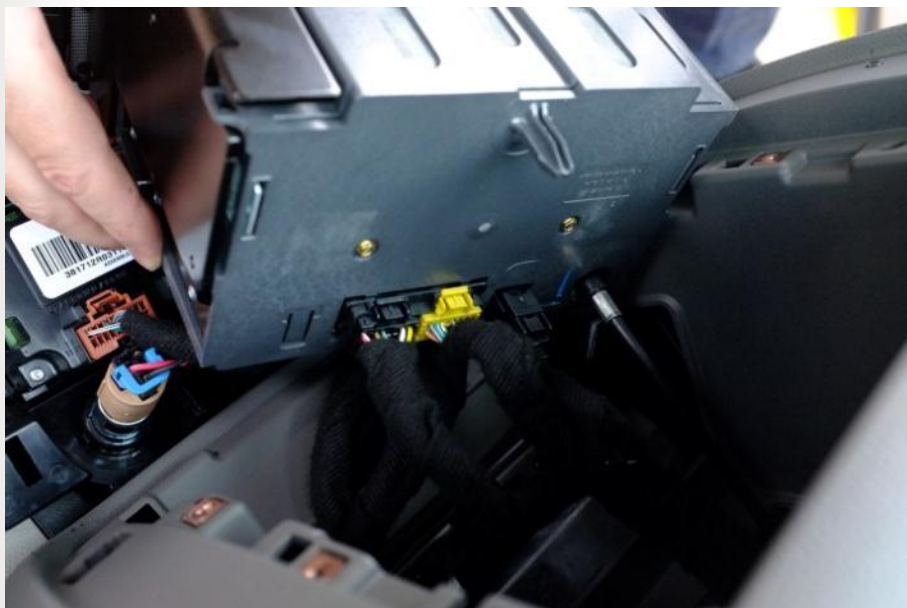
For more information, contact your local Motion Reseller or Motion Representative.

Chevy Tahoe Installation Instructions

11) Remove the heater and switch panel units as shown.



12) Remove the radio head unit disconnecting all of the wiring looms shown.



For more information, contact your local Motion Reseller or Motion Representative.

Chevy Tahoe Installation Instructions

13) Remove the right hand chassis retaining bolt as shown.



14) Remove the left hand chassis retaining bolt as shown.



For more information, contact your local Motion Reseller or Motion Representative.

Chevy Tahoe Installation Instructions

15) Fit the Left Hand Side Bracket 032-02-0301 as shown. Temporarily secure in place using two screws removed in steps 4 and 6.



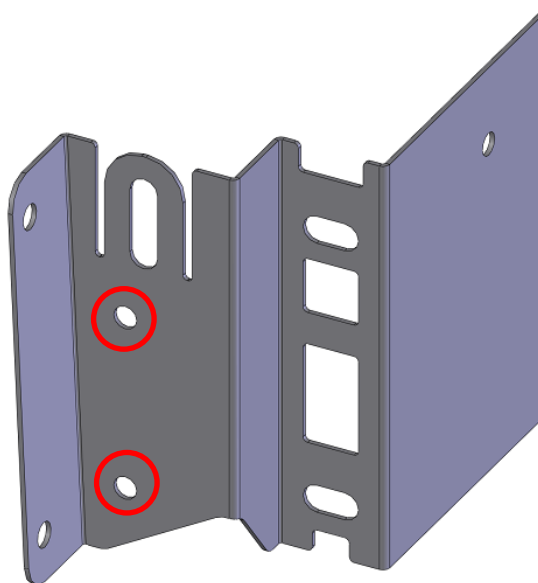
16) Ensure that the bracket is pushed firmly in the direction of the arrow as you tighten the screws.



For more information, contact your local Motion Reseller or Motion Representative.

Chevy Tahoe Installation Instructions

17) Fit two self tapping screws 039-02-0423 in the positions indicated in red below. Note that the picture below only shows one screw.



For more information, contact your local Motion Reseller or Motion Representative.



Chevy Tahoe Installation Instructions

18) Fit the fascia retaining screw removed in step 9 as shown. Note that the metal of the bracket is designed to bend and will be pulled in by the screw. Ensure that it is fully tightened.



For more information, contact your local Motion Reseller or Motion Representative.

Chevy Tahoe Installation Instructions

19) Fit one self tapping screws 039-02-0423 into the side as shown.



20) Fit one self tapping screws 039-02-0423 into the side as shown.



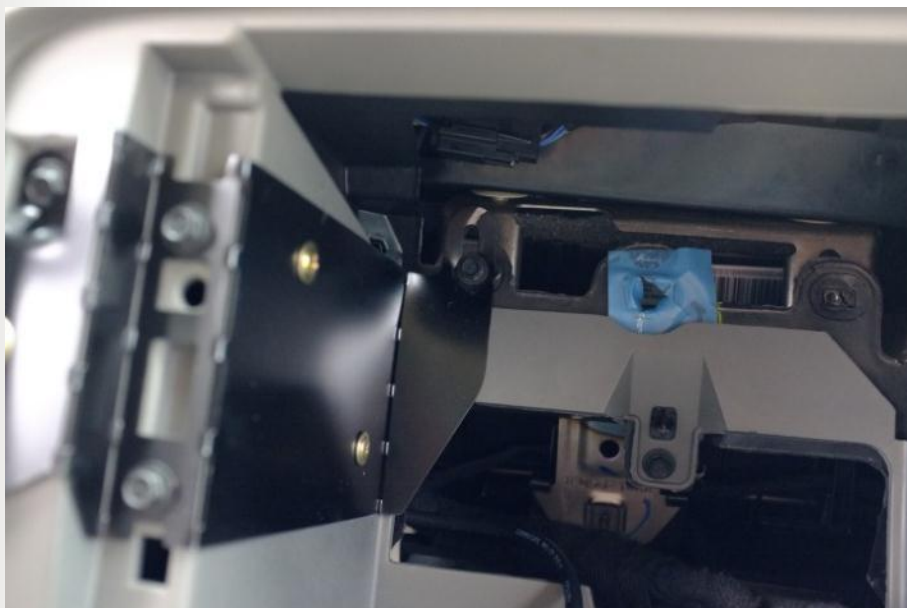
For more information, contact your local Motion Reseller or Motion Representative.

Chevy Tahoe Installation Instructions

21) Refit the chassis retaining bolt removed in step 14 as shown.



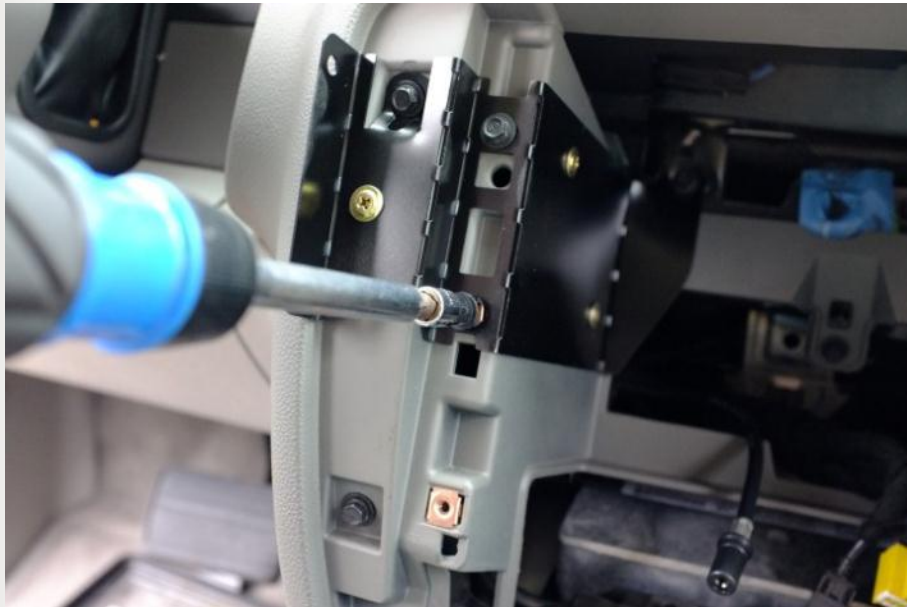
22) Note that the metal of the bracket is designed to bend and will be pulled in by the screw. Ensure that it is fully tightened.



For more information, contact your local Motion Reseller or Motion Representative.

Chevy Tahoe Installation Instructions

23) Remove the lower screw which was temporarily fitted in step 15.



24) Remove the upper screw which was temporarily fitted in step 15.

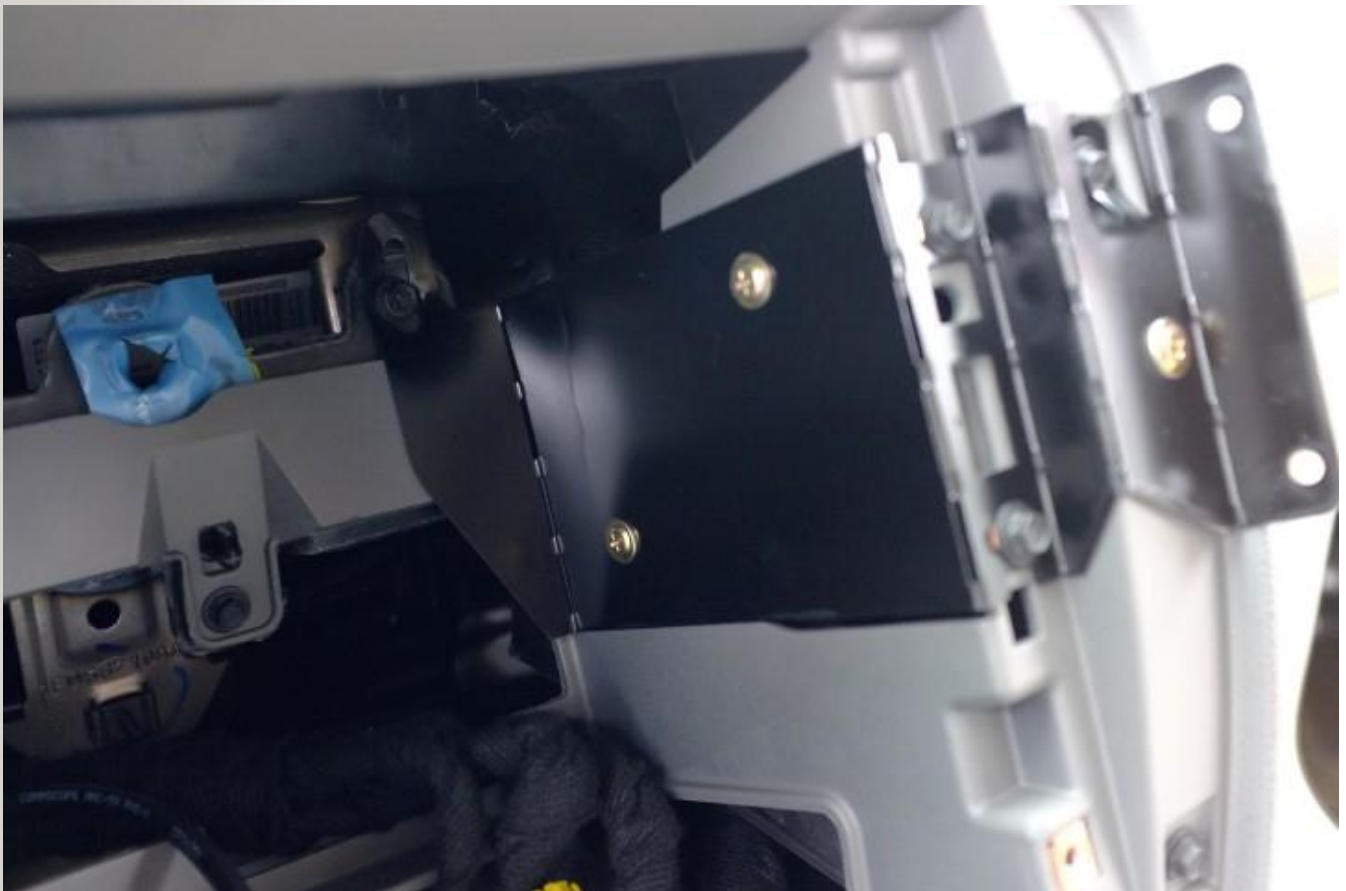


For more information, contact your local Motion Reseller or Motion Representative.



Chevy Tahoe Installation Instructions

25) Repeat steps 15 to 24 for the Right Side Bracket 032-02-0300 pictured below.



For more information, contact your local Motion Reseller or Motion Representative.



Chevy Tahoe Installation Instructions

26) Replace the cable looms removed in step 12 and refit the radio head unit.



27) Refit the four radio retaining screws as shown.



For more information, contact your local Motion Reseller or Motion Representative.

Chevy Tahoe Installation Instructions

28) Refit the heater control unit and secure with the left hand retaining screw as shown.



29) Refit the right hand retaining screw to the heater control unit as shown.



For more information, contact your local Motion Reseller or Motion Representative.

Chevy Tahoe Installation Instructions

30) Refit the switch panel unit and secure with the left hand retaining screw as shown.



31) Refit the right hand retaining screw to the switch panel unit as shown.



For more information, contact your local Motion Reseller or Motion Representative.

Chevy Tahoe Installation Instructions

32) The vehicle should now look like the below photograph and is ready to have the trim panel refitted.

Note that it may be necessary to bend out the two metal tabs indicated slightly to make fitting of the trim panel easier.



For more information, contact your local Motion Reseller or Motion Representative.

Chevy Tahoe Installation Instructions

33) Once the trim panel is securely back in place, fit the Front Bracket 032-02-0299 as shown.

Use four screws TD503712 and four lock washers TD503481 in the positions shown and tighten securely.



For more information, contact your local Motion Reseller or Motion Representative.

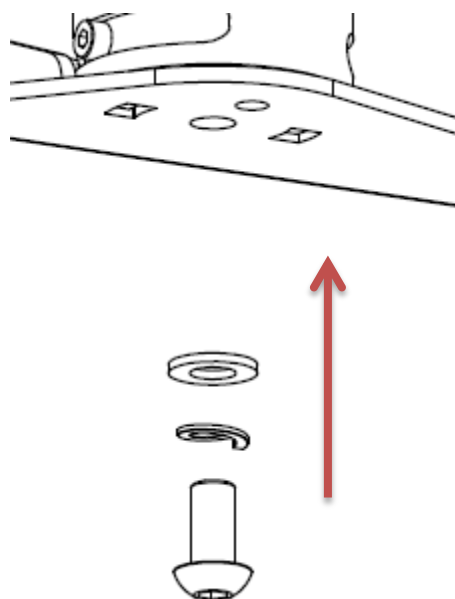
Chevy Tahoe Installation Instructions



34) Fit the Docking Station / Tilt & Rotate Assembly to the front bracket as shown using the provided M8 fasteners.

NOTE:- It may be necessary to temporarily remove the rubber edge strip to allow for correct fitment.

Ensure that the location lugs are correctly engaged before final tightening to prevent unwanted rotation.



For more information, contact your local Motion Reseller or Motion Representative.

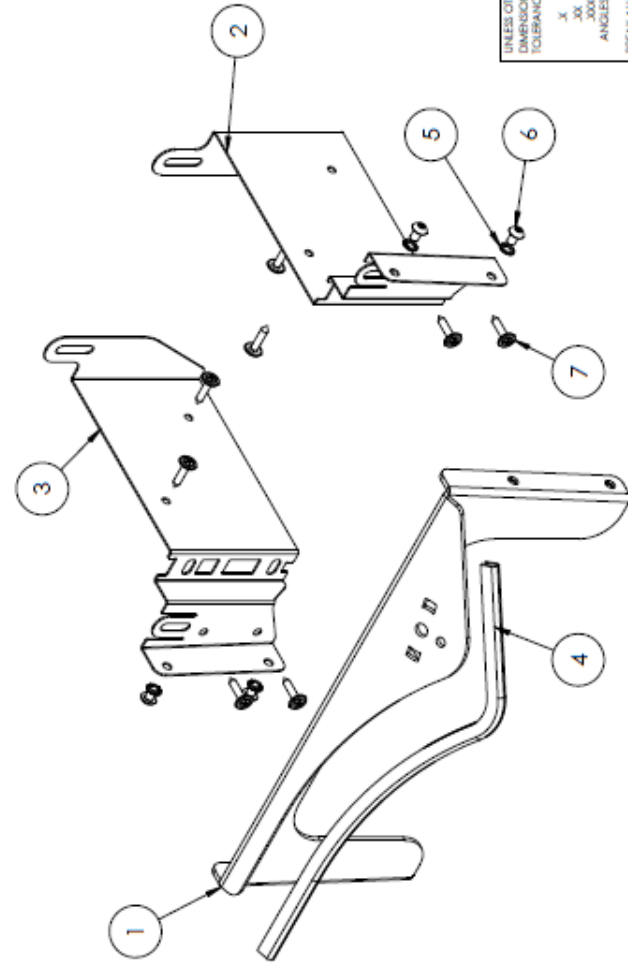
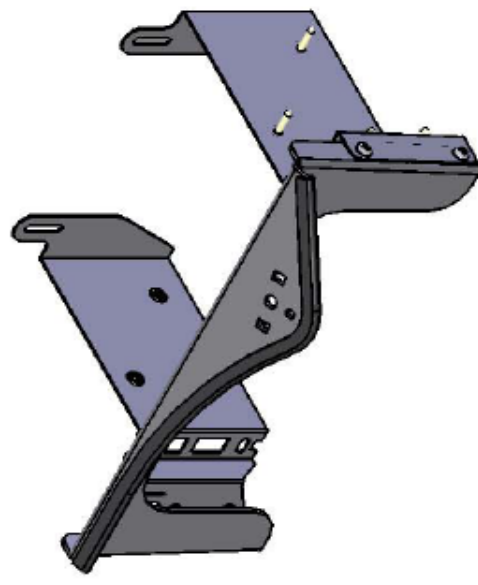
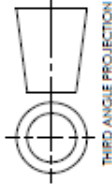
1

2

3

4

ITEM NO.	PART NUMBER	DESCRIPTION	QTY.
1	032-02-0299	Chevy Tahoe Front Bracket	1
2	032-02-0300	Chevy Tahoe Right Side Bracket	1
3	032-02-0301	Chevy Tahoe Left Side Bracket	1
4	TD500152 x Tahoe	Edging Strip x 340mm Long RS 619-1506	1
5	TD503481	DIN6797 M5 EXTERNAL TOOTHLOCK WASHER	4
6	TD503712	M5 X 8 SOCKET BUTTON HEAD SCREW B7P	4
7	039-02-0423	Sharp Point Lath Truss Screw #8 x 3/4in	8



REVISIONS			
ECN	REV.	DESCRIPTION	DATE
			APPROVED

<p>THIS DOCUMENT CONTAINS INFORMATION PROPRIETARY TO MOTION COMPUTING AND SHALL NOT BE USED FOR ENGINEERING DESIGN, PROCUREMENT OR MANUFACTURE IN WHOLE OR IN PART WITHOUT THE CONSENT OF MOTION COMPUTING.</p>		<p>8601 RR 2222 #2 AUSTIN, TX 78730 512.637.1100</p>	
<p>STYLES OTHERWISE SPECIFIED: DIMENSIONS ARE IN MILLIMETERS TOLERANCES ARE: .X ± 0.2 .XX ± 0.05 XXX ± 0.02 ANGLES ± 0.5 Deg BREAK ALL SHARP EDGES AND CORNERS REMOVE BURRS. MATERIAL: Mild steel and specified. FINISH:</p>		<p>APPROVALS: DATE: 7/06/2013</p>	
<p>DRAWN: RAA</p>		<p>TITLE: Chevy Tahoe Bracket</p>	
<p>CHECKED:</p>		<p>SIZE: B</p>	
<p>DESIGN ENGINEER:</p>		<p>DWG. NO.: 601.829.01</p>	
<p>REV: A00</p>		<p>SCALE: 1:3</p>	
<p>DO NOT SCALE DRAWING</p>		<p>SHEET 1 OF 1</p>	

1

2

3

4