

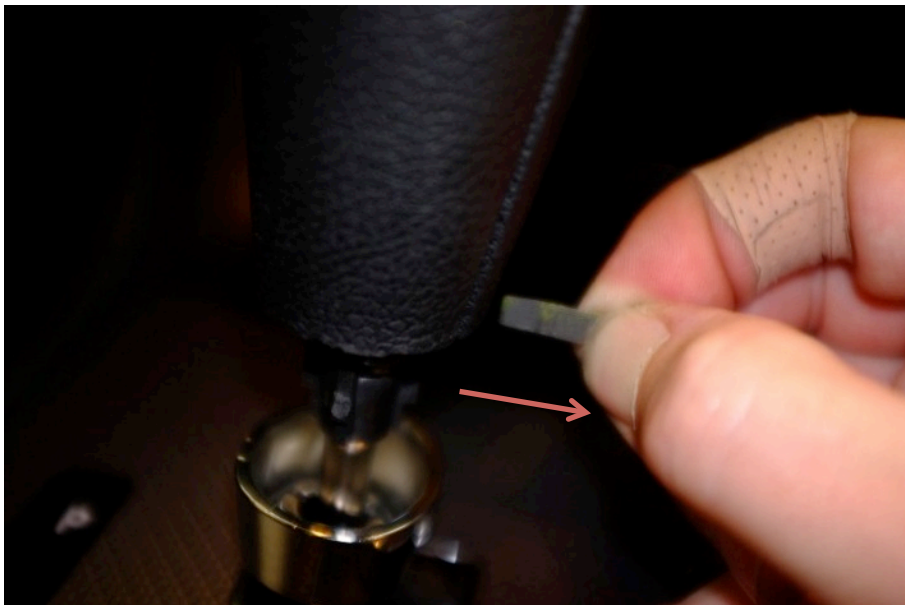


Dodge Charger Installation Instructions

1) Lower the trim collar from the gear shift as shown.



2) Remove the small clip retaining the gear shift knob as shown.



For more information, contact your local Motion Reseller or Motion Representative.

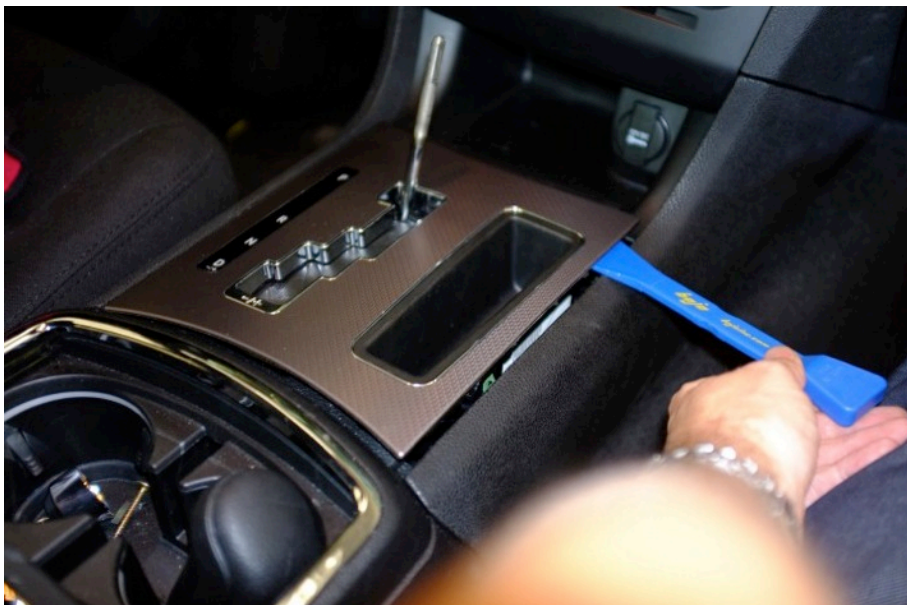


Dodge Charger Installation Instructions

3) Remove the gear shift knob as shown.



4) Release clips retaining the trim panel shown. Use of plastic trim panel removal tools will avoid damage.



For more information, contact your local Motion Reseller or Motion Representative.



Dodge Charger Installation Instructions

5) Release clips retaining the other side of the trim panel as shown.



6) Remove the trim panel completely.



For more information, contact your local Motion Reseller or Motion Representative.



Dodge Charger Installation Instructions

7) Remove the two lower retaining screws as shown.



For more information, contact your local Motion Reseller or Motion Representative.



Dodge Charger Installation Instructions

8) Remove the storage compartment as shown.



9) Remove the heater control panel as shown. Pulling firmly will release the retaining clips.



For more information, contact your local Motion Reseller or Motion Representative.



Dodge Charger Installation Instructions

10) Remove the four screws indicated.



For more information, contact your local Motion Reseller or Motion Representative.



Dodge Charger Installation Instructions

11) Place Left Hand Side Bracket 039-02-0304 as shown.



12) Refit using two of the screws removed in step 10.



For more information, contact your local Motion Reseller or Motion Representative.



Dodge Charger Installation Instructions

13) Fit one self tapping screw 039-02-0423 as shown.

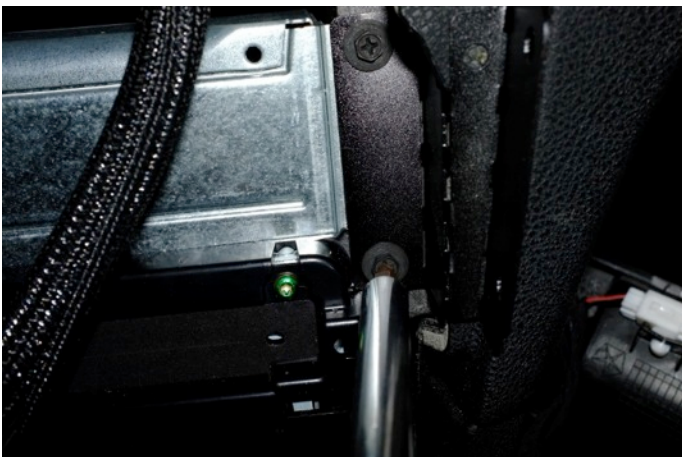


For more information, contact your local Motion Reseller or Motion Representative.



Dodge Charger Installation Instructions

14) Repeat steps 11, 12 and 13 for the Right Hand Bracket 032-02-0303 as shown.



For more information, contact your local Motion Reseller or Motion Representative.



Dodge Charger Installation Instructions

15) Refit the heater control panel as shown.



For more information, contact your local Motion Reseller or Motion Representative.



Dodge Charger Installation Instructions

16) Fit the Front Bracket 032-02-0302 as shown using four screws TD503712 and four Lock Washers TD503481.



For more information, contact your local Motion Reseller or Motion Representative.



Dodge Charger Installation Instructions

17) Refit the storage compartment removed in stage 8 along with its retaining screws as shown.



For more information, contact your local Motion Reseller or Motion Representative.



Dodge Charger Installation Instructions

18) Refit the gear shift trim panel as shown.



19) Slide the gear shift collar back on as shown.



For more information, contact your local Motion Reseller or Motion Representative.



Dodge Charger Installation Instructions

20) Replace the gear knob as shown.



21) Refit the gear knob retaining clip and collar as shown.



For more information, contact your local Motion Reseller or Motion Representative.



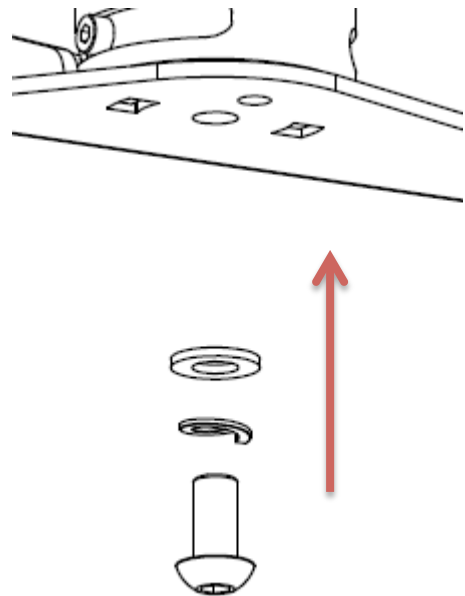
Dodge Charger Installation Instructions



22) Fit the Docking Station / Tilt & Rotate Assembly to the front bracket as shown using the provided M8 fasteners.

NOTE:- It may be necessary to temporarily remove the rubber edge strip to allow for correct fitment. Ensure that the location lugs are correctly engaged before final tightening to prevent unwanted rotation.

23) When installing the docking station to the VESA mount, ensure that the view the driver has through the windshield is not restricted in any way. If it is then select a lower set of holes on the VESA mount.

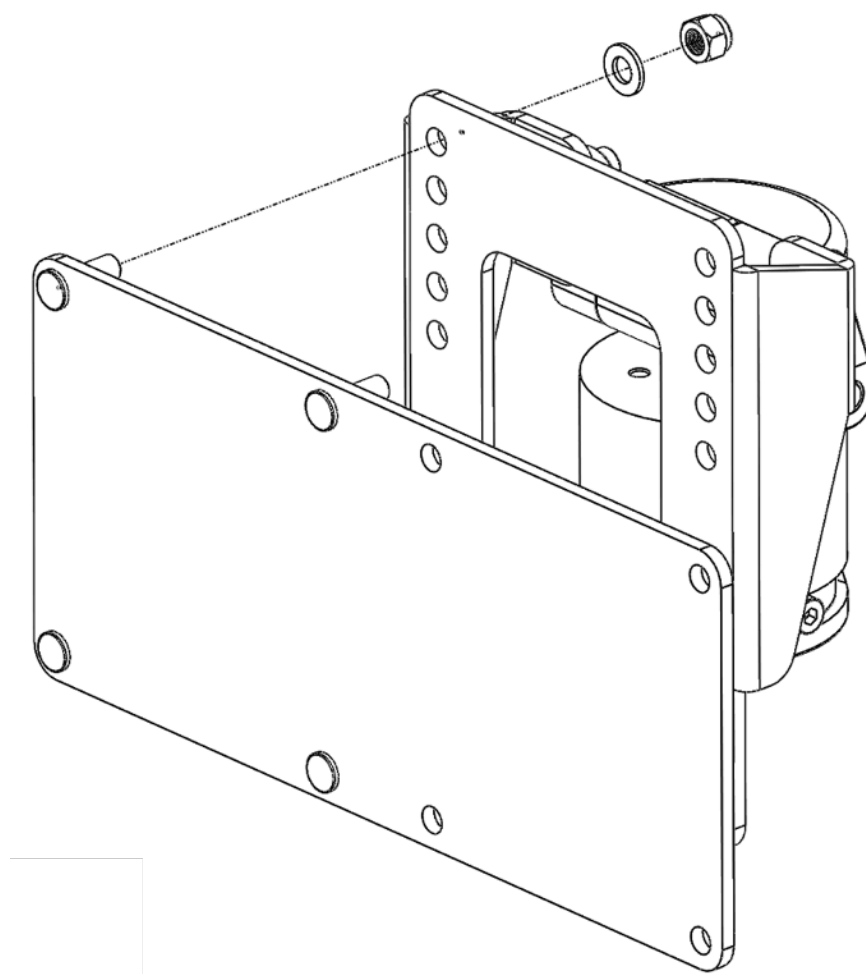


For more information, contact your local Motion Reseller or Motion Representative.



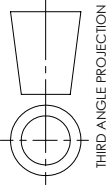
Dodge Charger Installation Instructions

24) Some vehicle variants may be fitted with a column shift. In these vehicles the supplied Stepout Plate 032-02-0396 should be fitted to the Tilt & Rotate Mount using 4 Washers 032-02-0398 and 4 Nylon Insert Nuts 032-02-0539 as shown to give extra clearance between the docking station and the gear shift.

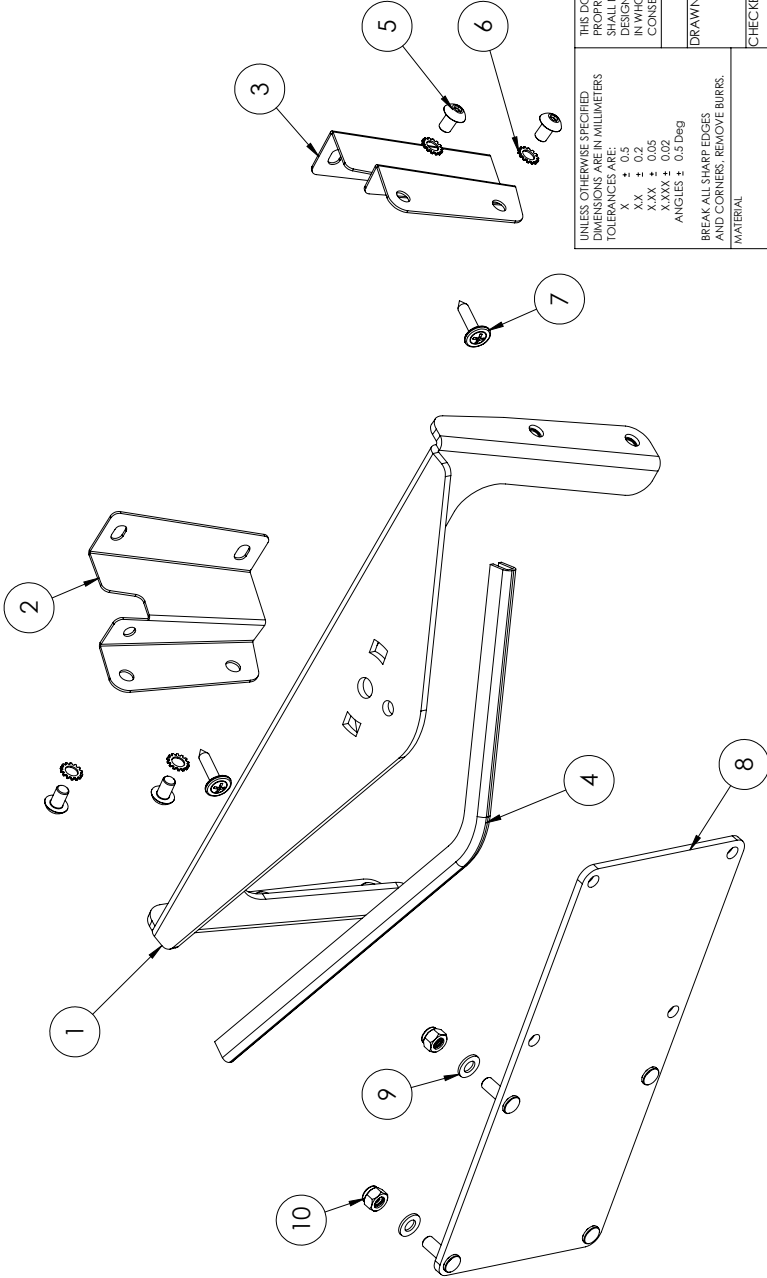
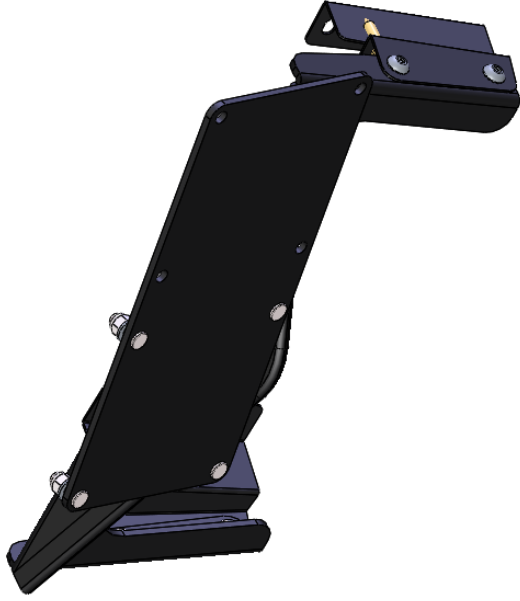


For more information, contact your local Motion Reseller or Motion Representative.

ITEM NO.	PART NUMBER	DESCRIPTION	QTY.
1	032-02-0302	Dodge Charger Front Bracket	1
2	032-02-0304	Dodge Charger Left Side Bracket	1
3	032-02-0303	Dodge Charger Right Side Bracket	1
4	TD500152 x Charger	Edging Strip x 260mm Long RS 619-1506	1
5	TD503712	M5 X 8 SOCKET BUTTON HEAD SCREW HT, Bright Zinc Plate	4
6	TD503481	M5 EXTERNAL TOOTHLOCK WASHER, Bright Zinc Plate	4
7	039-02-0423	Sharp Point Lath Truss Screw #8 x 3/4in	2
8	032-02-0396	Stepout Plate	1
9	039-02-0398	M5 WASHER, Bright Zinc Plate	4
10	039-02-0539	M5 NYLON INSERT NUT	4



REVISIONS			
ECN	REV.	DESCRIPTION	DATE
			APPROVED



MotionComputing 8601 RR 2222 #2
AUSTIN, TX 78730
512.637.1100

APPROVALS		DATE	TITLE	
DRAWN	RAA	6/17/2013	Dodge Charger Bracket Kit	
CHECKED			SIZE	DWG. NO.
DESIGN ENGINEER			B	601.830.01
FINISH			SCALE: 1:2	DO NOT SCALE DRAWING
See Notes				SHEET 1 OF 1

IMPORTANT:
All materials must be compliant with Directive 2011/65/EU of the European Parliament and of the Council of 8 June 2011 ("RoHS Recast").
No SVHC per REACH 1907/2006 and its amendments greater than 0.1% by weight allowed.