

Ford Ranger 2011+ Installation Instructions

1) Remove center console fascia by releasing the clips at the top first.



2) Then release the clips at the bottom.



For more information, contact your local Motion Reseller or Motion Representative.

Ford Ranger 2011+ Installation Instructions

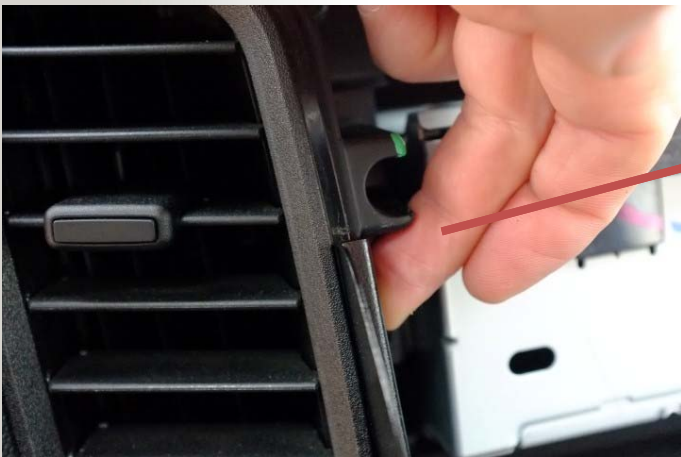
3) Remove the three plugs attaching cable looms to the console.



For more information, contact your local Motion Reseller or Motion Representative.

Ford Ranger 2011+ Installation Instructions

4) Offer up the left hand side bracket (032-02-0298) and scribe lines top and bottom as shown on the air vent lip. This material will be removed in stage 7 to allow clearance for the brackets.



For more information, contact your local Motion Reseller or Motion Representative.



Ford Ranger 2011+ Installation Instructions

5) Repeat the process outlined in stage 4 for the right hand side bracket (032-02-0297).



For more information, contact your local Motion Reseller or Motion Representative.



Ford Ranger 2011+ Installation Instructions

6) Remove the left and right hand air vents as shown.



For more information, contact your local Motion Reseller or Motion Representative.



Ford Ranger 2011+ Installation Instructions

7) Carefully remove the material between the scribed lines as shown below on both air vents.

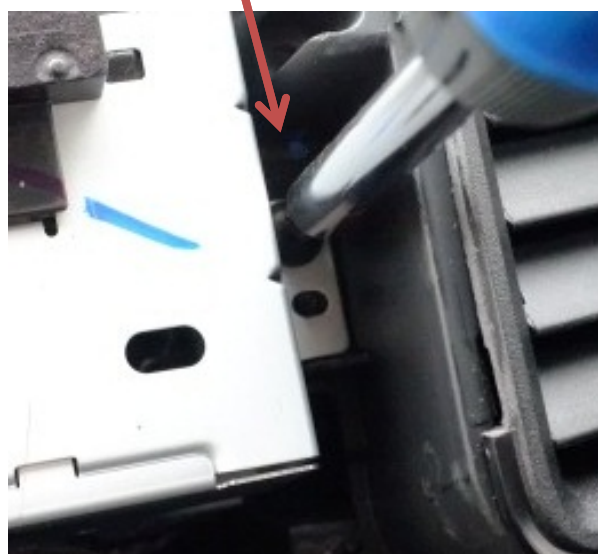
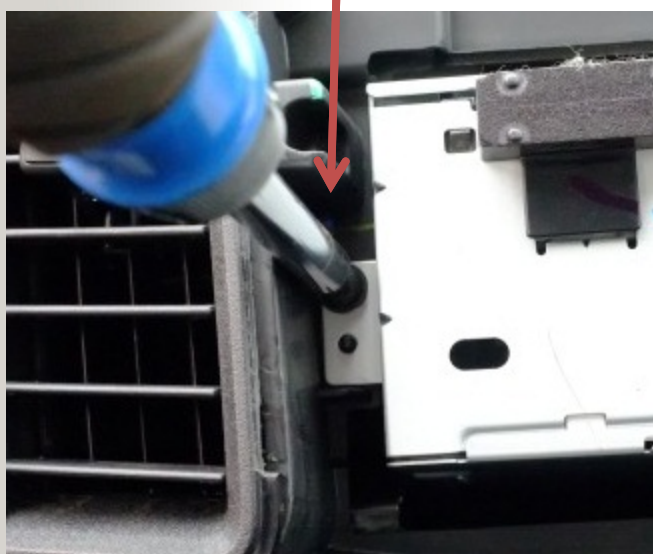


For more information, contact your local Motion Reseller or Motion Representative.



Ford Ranger 2011+ Installation Instructions

8) Replace the air vents and remove the two screws retaining the CD changer pictured below.



For more information, contact your local Motion Reseller or Motion Representative.

Ford Ranger 2011+ Installation Instructions

9) Fit the left hand side bracket (032-02-0298) as shown using one of the screws removed in stage 8.



10) Fit the right hand side bracket (032-02-0297) as shown using the remaining screw removed in stage 8.



For more information, contact your local Motion Reseller or Motion Representative.

Ford Ranger 2011+ Installation Instructions



11) Drill two 2mm diameter pilot holes as shown and fit two self tapping screws as shown.



For more information, contact your local Motion Reseller or Motion Representative.

Ford Ranger 2011+ Installation Instructions

12) Repeat the process outlined in stage 11 for the left hand side bracket as shown.



13) Reattach the three cable loom plugs to the center console as shown.



For more information, contact your local Motion Reseller or Motion Representative.

Ford Ranger 2011+ Installation Instructions

14) Carefully replace the center console as shown.

NOTE:- bending the left and right hand side brackets out slightly will assist during this stage. They can be bent back inwards once the center console is fully in place



For more information, contact your local Motion Reseller or Motion Representative.

Ford Ranger 2011+ Installation Instructions

15) Fit the front bracket (032-02-0296) as shown using four shake-proof washers (TD503481) and four socket button head screws (TD503712).



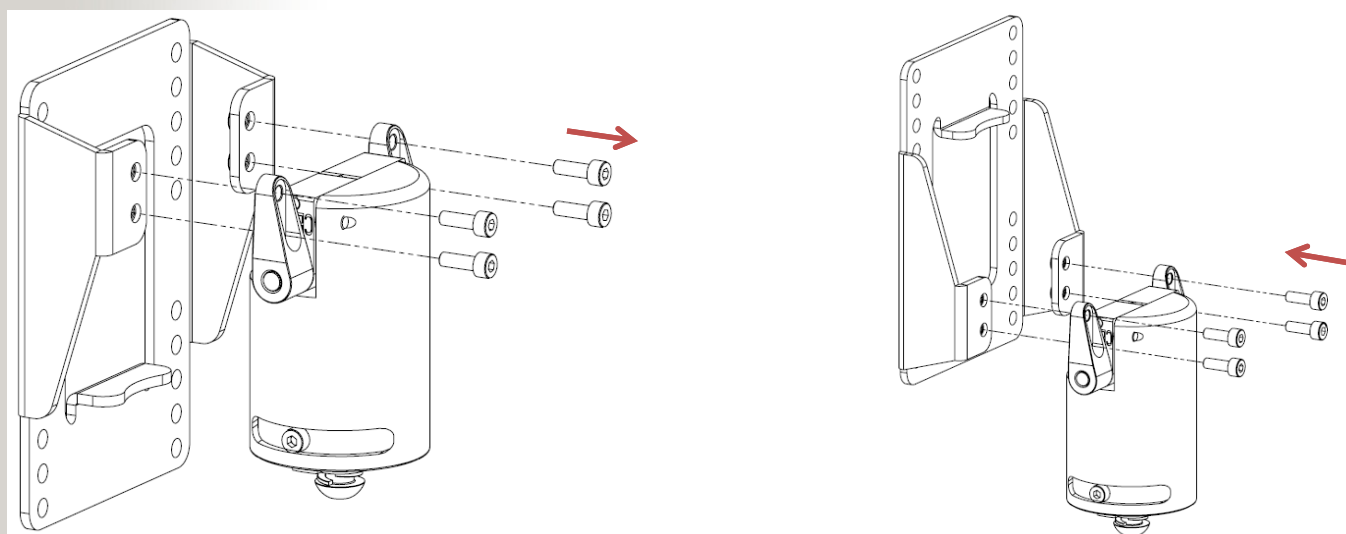
For more information, contact your local Motion Reseller or Motion Representative.



Ford Ranger 2011+ Installation Instructions

16) Rotate the VESA plate on the Tilt & Rotate Assembly by 180 degrees as shown.

Remove the four socket head cap screws, rotate the VESA plate by 180 degrees and re-fit the four socket head cap screws.

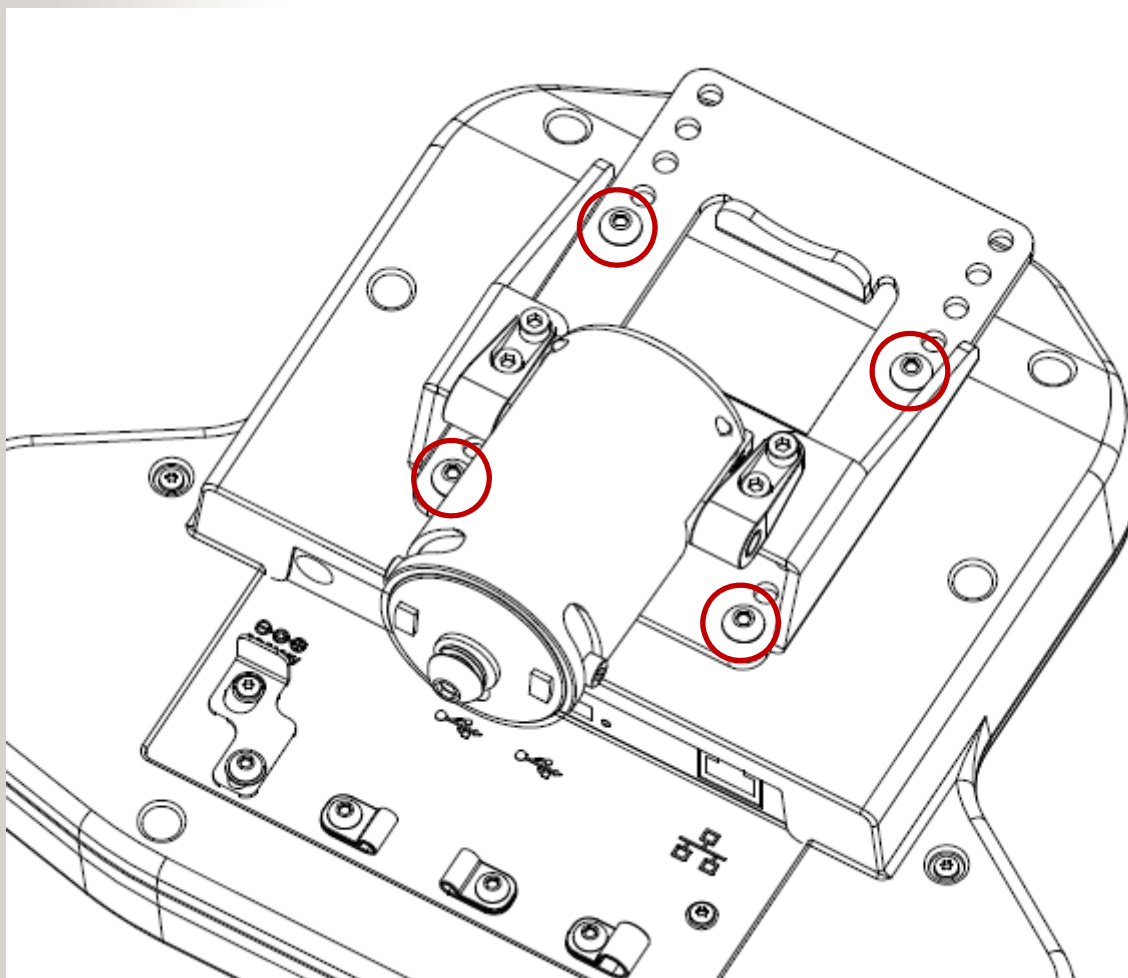


For more information, contact your local Motion Reseller or Motion Representative.

Ford Ranger 2011+ Installation Instructions

17) Fit the docking station to the VESA plate as shown.

NOTE:- ensure the lowest set of holes are used to obtain the correct height.



For more information, contact your local Motion Reseller or Motion Representative.

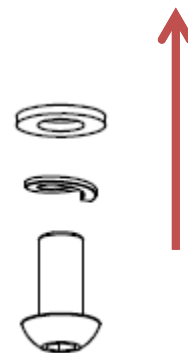
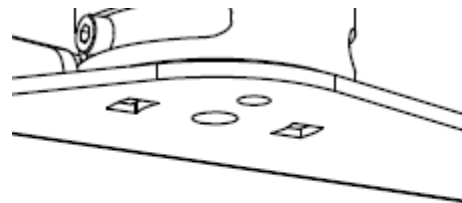
Ford Ranger 2011+ Installation Instructions



18) Fit the Docking Station / Tilt & Rotate Assembly to the front bracket as shown using the provided M8 fasteners.

NOTE:- It may be necessary to temporarily remove the rubber edge strip to allow for correct fitment.

Ensure that the location lugs are correctly engaged before final tightening to prevent unwanted rotation.



For more information, contact your local Motion Reseller or Motion Representative.

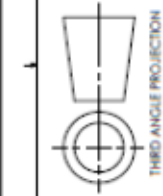


Ford Ranger 2011+ Installation Instructions

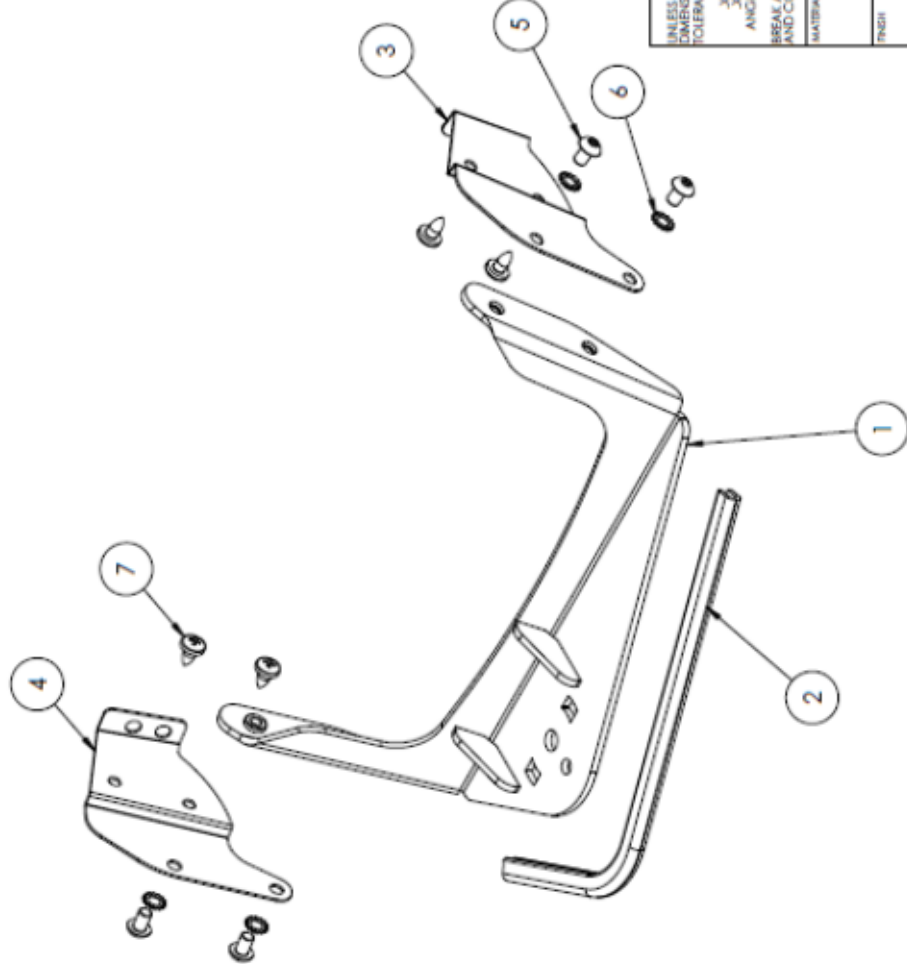
Photograph of finished installation



For more information, contact your local Motion Reseller or Motion Representative.



ITEM NO.	PART NUMBER	DESCRIPTION	QTY.
1	032-02-0296	Ford Ranger 2011+ Front Plate	1
2	TD500152 x Ranger 2011	EDGING STRIP x 240mm Long RS 619-1506	1
3	032-02-0297	Ford Ranger 2011+ Right Side Plate	1
4	032-02-0298	Ford Ranger 2011+ Left Side Plate	1
5	TD503712	M5 X 8 SOCKET BUTTON HEAD SCREW BZP	4
6	TD503481	DIN6797 M5 EXTERNAL TOOTHLOCK WASHER	4
7	039-02-0417	#10 x 0.375 Pozzi Drive Pan Head Self Tapping Screw, Pointed, Black	4



THE DOCUMENT CONTAINS INFORMATION PROPRIETARY TO MOTION COMPUTING AND SHALL NOT BE USED FOR ENGINEERING, DESIGN, PROCUREMENT OR MANUFACTURE IN WHOLE OR IN PART WITHOUT THE CONSENT OF MOTION COMPUTING

UNLESS OTHERWISE SPECIFIED, DIMENSIONS ARE IN MILLIMETERS. TOLERANCES ARE:
XXX ± 0.05
XXX ± 0.02
ANGLES ± 0.5 DEG
BREAK ALL SHARP EDGES AND CORNERS, REMOVE BURRS.
MATERIAL
FINISH

APPROVALS
DATE
15/04/2013
BAA
CHECKED
DESIGN ENGINEER

TITLE
Ford Ranger 2011+ PSM Kit

8601 RR 2222 #2
Motion Computing
AUSTIN, TX 78730
\$12,637.1100

SIZE
B

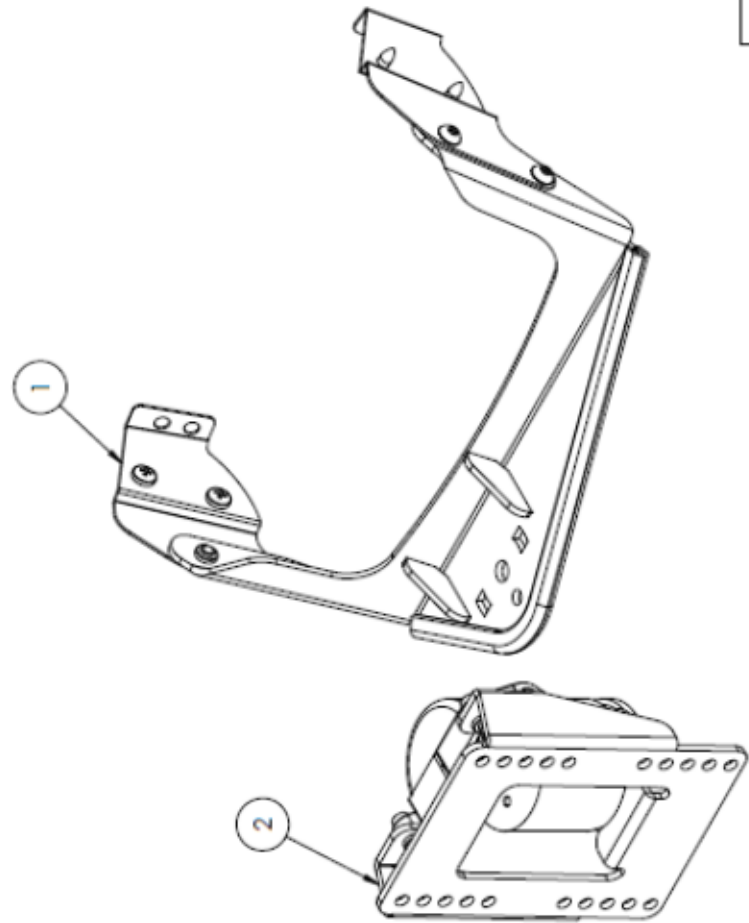
DWG. NO.
601.828.01

REV
A00

SCALE: 1:2
DO NOT SCALE DRAWING

SHEET 1 OF 1

ITEM NO.	PART NUMBER	DESCRIPTION	QTY.
1	601.828.01	Ford Ranger 2011+ PSM Kit	1
2	TA1027	Tilt & Rotate	1



UNLESS OTHERWISE SPECIFIED, DIMENSIONS ARE IN MILLIMETERS. TOLERANCES ARE:		THE DOCUMENT CONTAINS INFORMATION PROPRIETARY TO MOTION COMPUTING AND SHALL NOT BE USED FOR ENGINEERING DESIGN, PROCUREMENT OR MANUFACTURE IN WHOLE OR IN PART WITHOUT THE CONSENT OF MOTION COMPUTING.	
XX ± 0.05	XX ± 0.05	APPROVALS	DATE
XX ± 0.05	XX ± 0.05	DRAWN	15/04/2013
ANGLES ± 2.0 Deg		CHECKED	
BREAK ALL SHARP EDGES AND CORNERS, REMOVE BURRS.		DESIGN ENGINEER	
MATERIAL			
FINISH			
TBA			

MotionComputing		8601 RR 2222 #2 AUSTIN, TX 78730 512.637.1100	
TITLE			
Ford Ranger 2011+ Installation Kit			
SIZE	DWG. NO.	REV	
B	601.828.11	A00	
SCALE: 1:2	DO NOT SCALE DRAWING	SHEET 1 OF 1	