

# Motion™ LE1700 Tablet PC Series

## Quick Reference Guide for Windows XP

This quick reference guides provides information for using the LE1700 and LE1700 WriteTouch™ system.

**NOTE:** For additional reference information, see the Quick Setup included with your Tablet PC.

### Logging on

After turning on your Tablet PC, perform the following steps:

1. When prompted, press the **Ctrl+Alt+Del** button located on the front of your Tablet PC (labeled with a key icon).
2. Using the pen and the on-screen keyboard, tap in your password.



Windows Security button

### Getting started

Familiarize yourself with the following reference materials:

1. Complete the interactive *Get Going with Tablet PC* tutorial. (Start > All Programs > Tablet PC > Get Going with Tablet PC)
2. Complete the other useful *Tablet PC Tutorials*. (Start > All Programs > Tablet PC > Tablet PC Tutorials)
3. Open and review the Motion Dashboard. (Start > All Programs > Motion Resources > Motion Dashboard or see "Using the Tablet PC Buttons" below)
4. Refer to the *Motion User Guide* if you have any questions. (Start > All Programs > Motion Resources > Motion User Guide)

### Using the pen and the touch screen

Using the Tablet PC pen or your fingertip on the touch screen is similar to using a mouse to make selections and open files.

The following table explains the similarities between a Tablet PC pen or fingertip and a mouse.

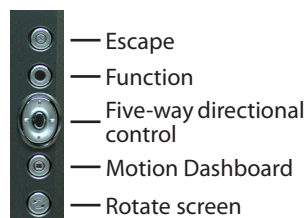
Function	Mouse action	Touch and pen action
Select	Point and click	Point and tap the display
Open a file or application	Double-click	Double-tap or double-touch on the display
Select and drag	Click and drag	Tap or touch and drag on the display
Display properties or edit functions (cut, copy, paste)	Right-click and hold	Hold the pen or your fingertip on the display until the mouse icon appears, and then remove the pen tip or fingertip from the display

### Helpful pen tips

- Hold the pen like a regular pen.
- You can rest your hand on the screen.
- You can change from right- to left-handed usage.
  1. Open Motion Dashboard (see *Getting started*).
  2. On the Pen & Digitizer panel, select Pen & Button Options, and then select Tablet and Pen Settings.
  3. In the Settings tab, choose left-handed.
- Calibrate the digitizer and pen for better pointer alignment.
  1. Open Motion Dashboard (see *Getting started*).
  2. On the Pen & Digitizer panel, select Calibrate Digitizer, and then follow the instructions.
- For more information about using the pen, see the *Motion User Guide*.



### Using the Tablet PC buttons



#### Helpful tip:

Use the Function button to activate the secondary functions of the Directional Control, Motion Dashboard, and Rotate buttons. For more information, see the *Motion User Guide* on your Tablet PC desktop.



Wireless button

To activate or deactivate the wireless adapters, press and hold the wireless button on the left side of the Tablet PC, above the power switch. For more information about button functions, see the *Motion User Guide* on your Tablet PC desktop.

### Optimizing battery life

- Use AC power when available. When the Tablet PC is connected to AC power, the battery will continue to charge while using the Tablet PC.
- In the Display panel of the Motion Dashboard, adjust the brightness to the dimmest comfortable brightness level.
- In the Motion Dashboard, set the power button to Stand By or Hibernate to conserve battery power, to quickly power on and off, or when not using the Tablet PC.
- When not in use, turn off wireless adapters in Motion Dashboard.
- For advanced tips about extending the battery life, go to [www.motioncomputing.com/tips](http://www.motioncomputing.com/tips).

## Using the Motion™ Dashboard to adjust Tablet PC settings

Open the **Motion Dashboard** by pressing this button on the front of the Tablet PC.

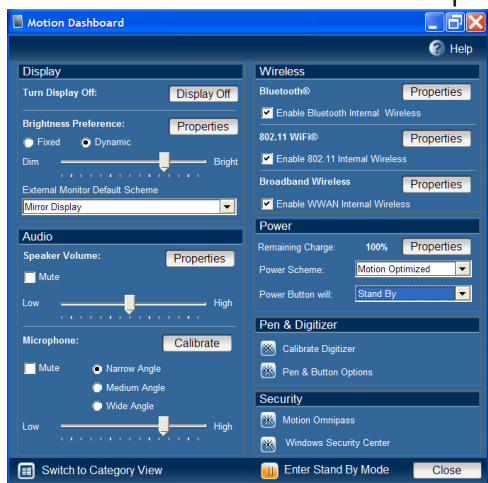


Set display to Off —  
Adjust brightness —  
Select the default display scheme for the external monitor

Control audio playback —

Configure microphones and Speak Anywhere® —

Click here to change views —



Classic View

Access information for using the Motion Dashboard

— Set Bluetooth® on or off

— Set 802.11 on or off

— Set Broadband Wireless on or off

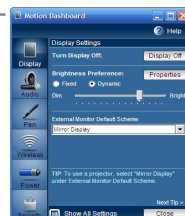
— Adjust power settings

— Configure power button for off, Hibernate, or Stand By mode

— Calibrate and customize the pen and buttons

— Configure security settings

Set to Stand By Mode



Category View

## Entering text and data

1. To open the Tablet PC Input Panel, tap inside a text field, and then tap the floating Input Panel icon.



Or, tap the Input Panel icon to the right of the Start button to open the Input Panel.



2. Select one of the three Input Panel input modes, then enter your data. See illustrations to the right.

### Helpful hints

- To move the floating Input Panel, grab the move bar on the right side of the Input Panel, and move the window.

- To dock the Input Panel at the top or bottom of the screen, tap the Tools and Options icon.

- To access Input Panel settings, tap the Tools and Options icon, and select Options.

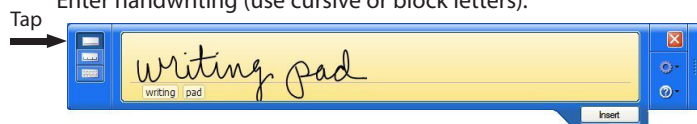
- To learn how to use ink in Microsoft® Office applications, go to [www.motioncomputing.com/tips](http://www.motioncomputing.com/tips).



Tools and Options icon

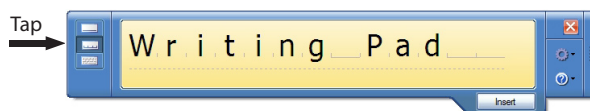
### Mode 1: Handwriting input

Enter handwriting (use cursive or block letters).



### Mode 2: Character input

Enter characters one at a time.



### Mode 3: Keyboard input

Tap the on-screen keyboard.



**IMPORTANT:** The *Motion User Guide*, located on your Tablet PC desktop, contains information about the following topics.

## Setting wireless devices

- To set up and use your Bluetooth wireless devices, see "Using Bluetooth" in the *Motion User Guide*.
- To set up the built-in Wi-Fi adapter, see "Using Wi-Fi (802.11)" in the *Motion User Guide*.
- To set up and use wireless broadband services, see "Using Wireless Broadband" in the *Motion User Guide*.

## Using the ports and card slots

For information about the locations and uses for the ports and card slots, see "Features" in the *Motion User Guide*.

## Setting up the Fingerprint Reader

You can use the Fingerprint Reader for user authentication, password replacement, and scrolling in applications like a touchpad.

To set up the Fingerprint Reader, see "Using Motion OmniPass™ and Fingerprint Reader" in the *Motion User Guide*.

## Using speech recognition

1. For information about configuring speech recognition, see "Using Speech Recognition" in the *Motion User Guide*.

2. Complete the *Using Speech Recognition* tutorial.

(Start > All Programs > Tablet PC > Tablet PC Tutorials > Speech)